



Tyers Stream Group

Tyers Stream Dam Heritage Structure

Line of significance to Māori



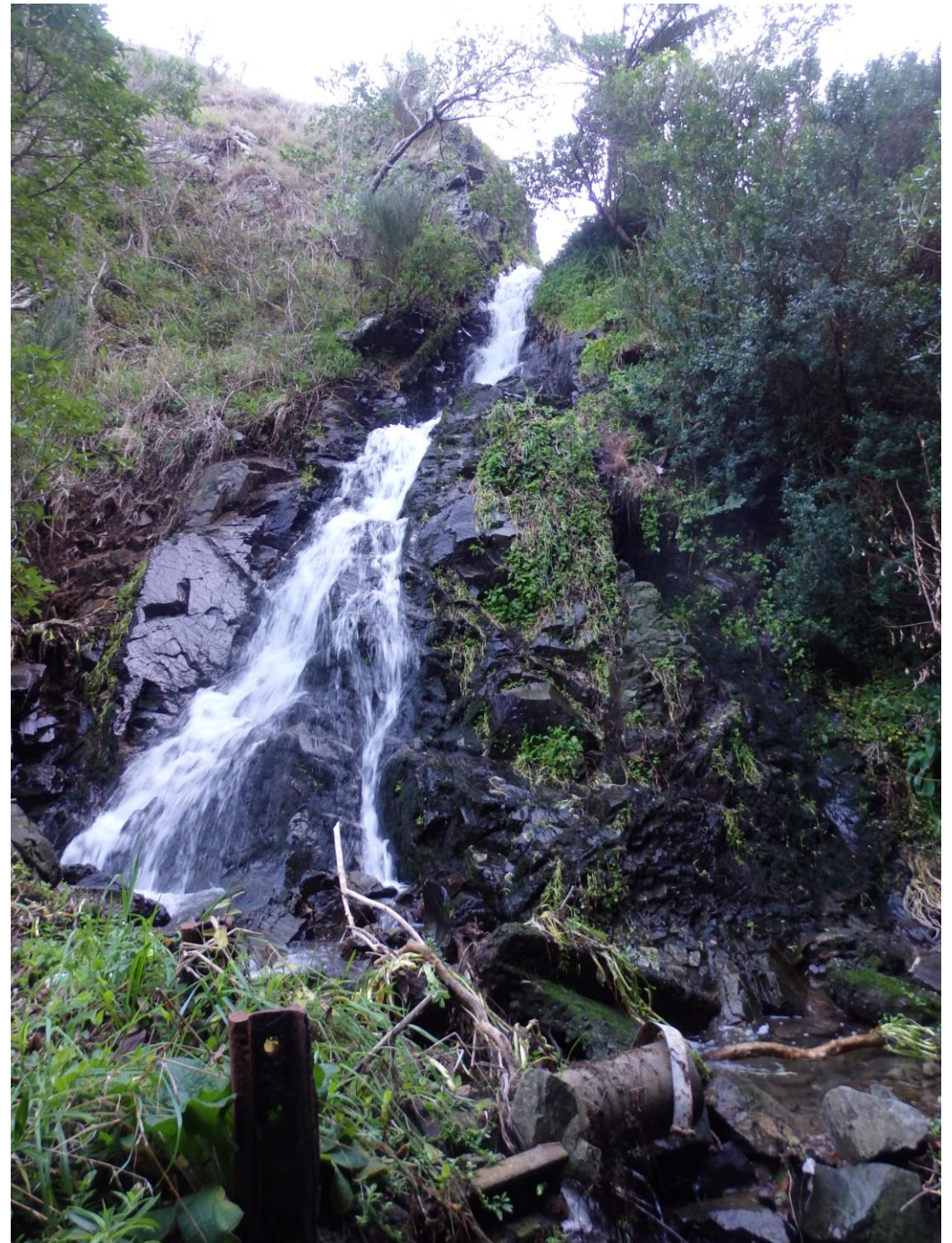
Tyers Stream Dam >

Te Whanganui-ā-Tara

Ngā Ūranga Pā

Tyers Stream Dam







Line of Significance to Māori

We understand and support the purpose of the inclusions of the lines and sites of significance to Māori which is to recognise the significance of these sites and to protect them, (using the District Plan Process), from inappropriate use, subdivision and development and to enable the exercise of kaitiakitanga by Mana Whenua.

Line of significance to Māori



Line of significance to Māori & Stream Corridor



The following photos show existing land and water management issues on Tyers Stream for which the City Council is responsible that may need addressing in the District Plan rules to appropriately acknowledge, “*A Line of significance to Māori*”.

All photos are on or beside Tyers Stream and were taken by Tyers Stream members or friends.

Kim Street: stormwater damage from recent development





Poor stormwater management: erosion of Waste Water pipe in Tyers Stream Reserve



Poor stormwater management: Waste water pipe overtopped



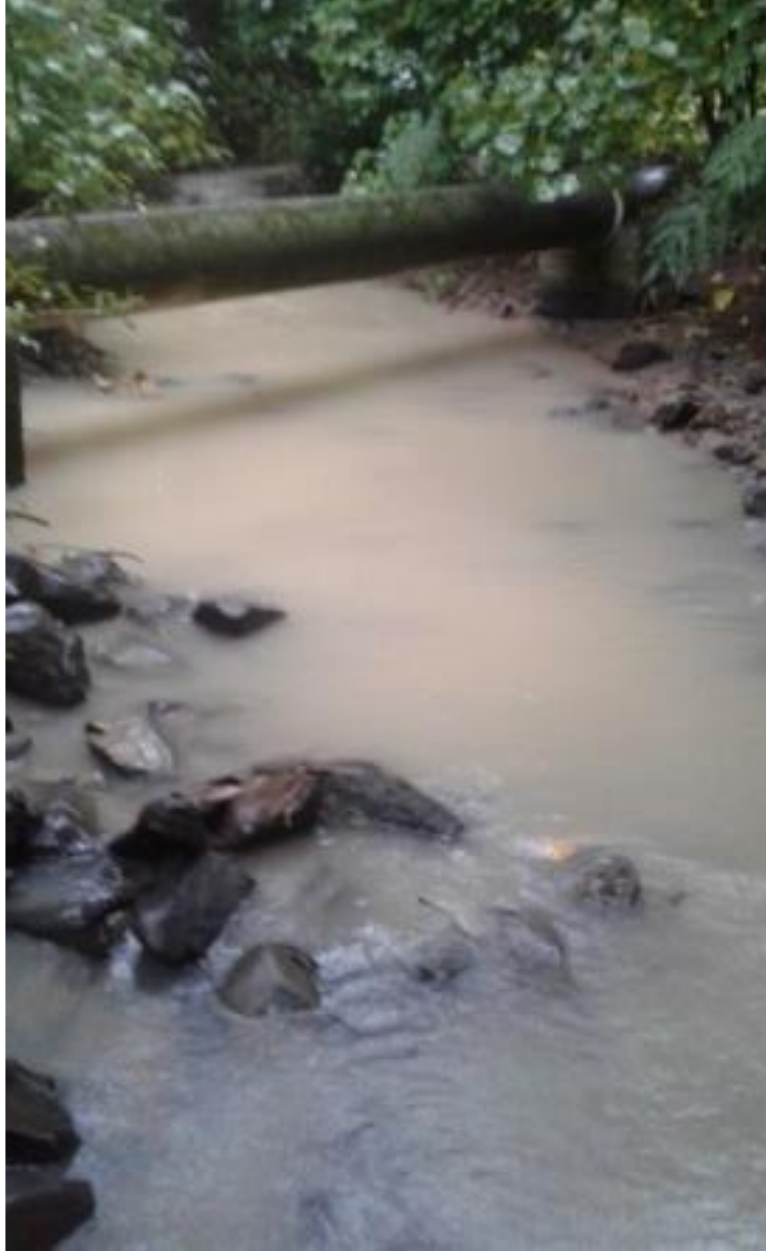
Waste Water pipe catching eroded material.



Low water levels due to decreased rainwater permeability.



Pollution due to burst water main



Waste water leaking directly into Tyers Stream



Sewage fungi due to significant waste water (sewage) leaks into Tyers Stream. Current pipe is beyond capacity.



Removal of vegetation from proposed SNA beside Tyers Stream



Building extension less than 5m from Tyers Stream without consent, 2021

