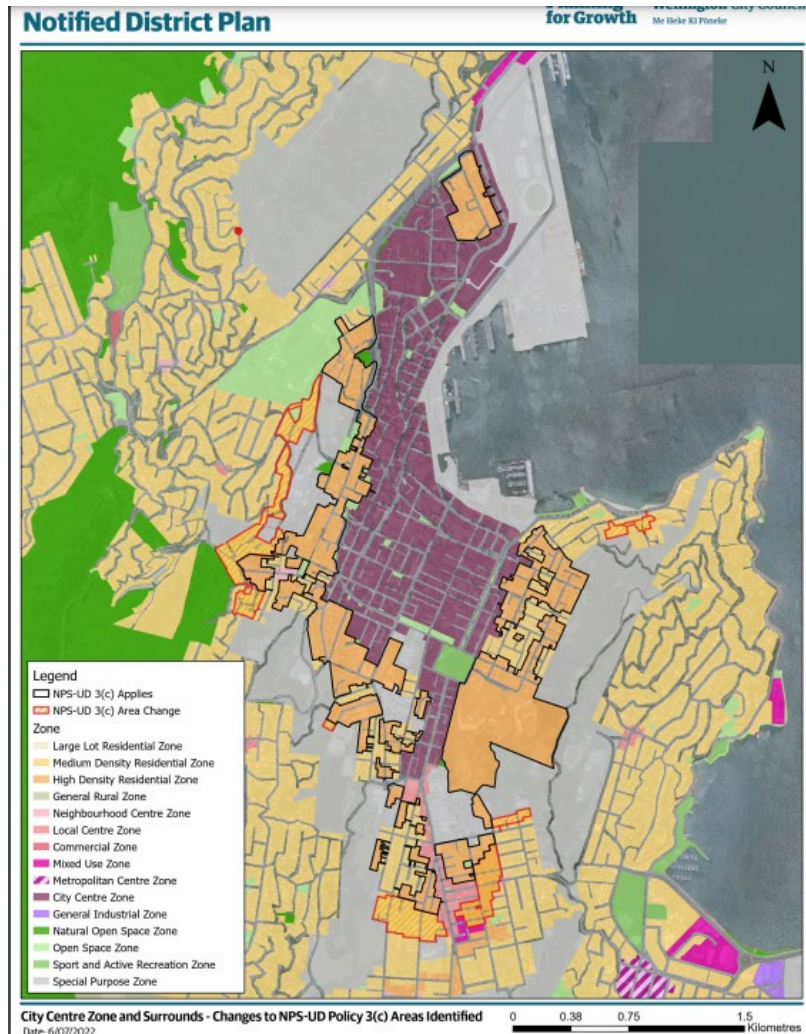


Submission on Proposed District Plan Hearing Stream 2

To accompany oral submission by Pukepuke Pari Residents Incorporated

Hearing date: 30 March 11am

Changes between 15-minute and 10-minute walkable catchment



<https://wellington.govt.nz/-/media/your-council/plans-policies-and-bylaws/district-plan/proposed-district-plan/reports/supplementary-documents/map-identifying-changes-between-15-minute-and-10-minute-walkable-catchment-adopted-of-the-city-centr.pdf?la=en&hash=A43773866C2DDA80520723559AB8734FDF4CD376>

Oriental Bay Height Precinct

Absolutely Positively
Wellington City Council
Mo Hēke Ki Pōwhiri

Oriental Bay Height precinct - Draft District Plan (DDP)



Summary

Oriental Bay Height precinct boundary for the Draft District Plan for Wellington City Council.

[View Full Details](#)

[Download](#)

Details

 **Dataset**
Feature Layer

 **November 4, 2021**
Info Updated

 **November 4, 2021**
Data Updated

 **October 12, 2021**
Published Date



Oriental Bay Height Precinct (portion)



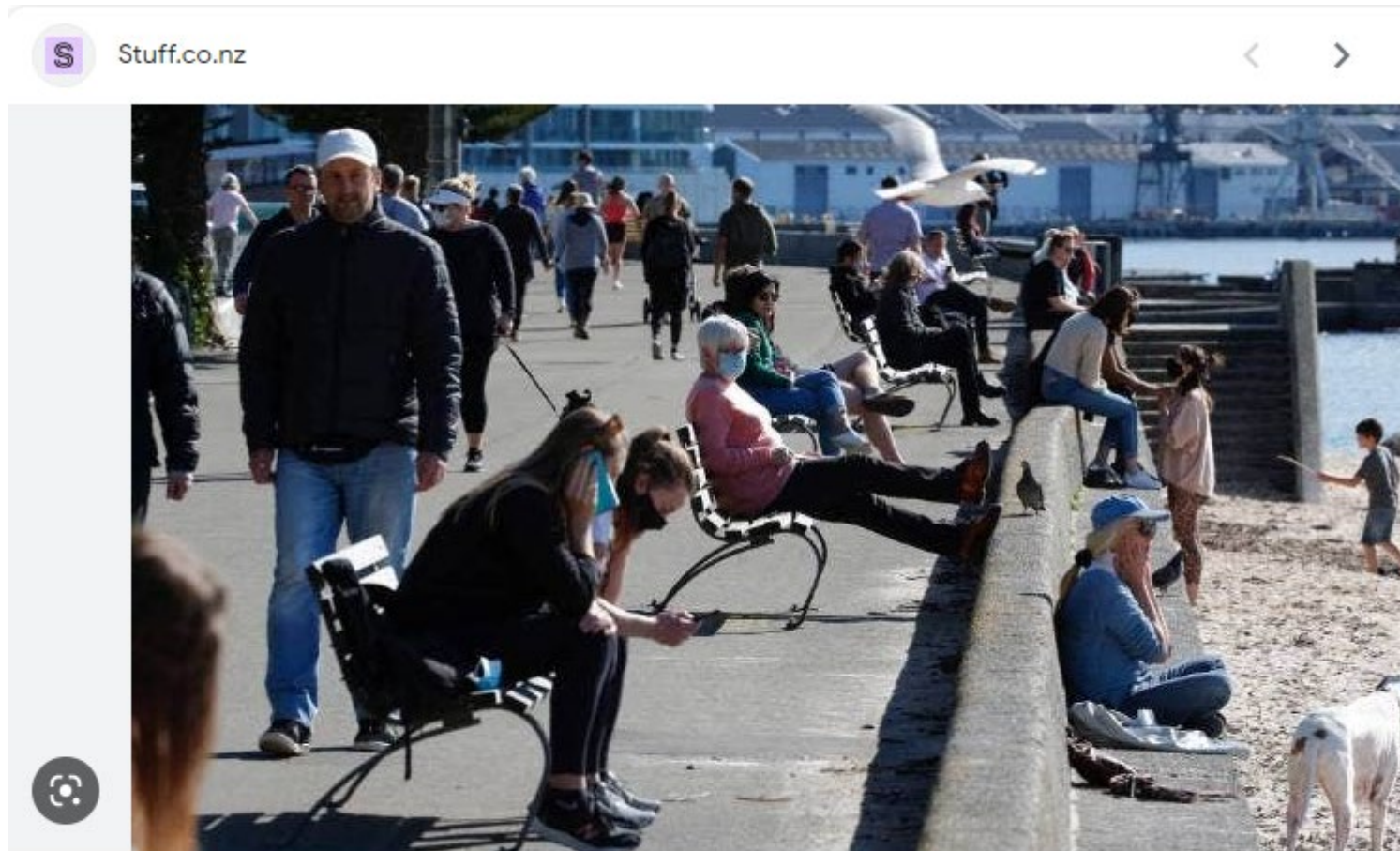
Oriental Bay



Oriental Bay Beach



Oriental Parade Promenade



Covid-19: Wellingtonians flock to Oriental Bay, despite lockdown | Stuff.co.nz

Iconic Views Towards the Green Belt



Table 1: Estimated density per hectare and estimated uptake rate per housing density typology.

Housing density typology	Density per ha	Uptake
Type 2 (2 to 3 storeys)	55	29%
Type 3 (3 to 4 storeys)	100	14%
Types 4a (up to 6 storeys) & 4b (enable at least 6 storeys)	100	14%
Type 5 (up to 8 storeys)	300	8%

Our City Tomorrow Spatial Plan for Wellington City

Updated City-wide Estimated Growth Distribution Figures

September 2021

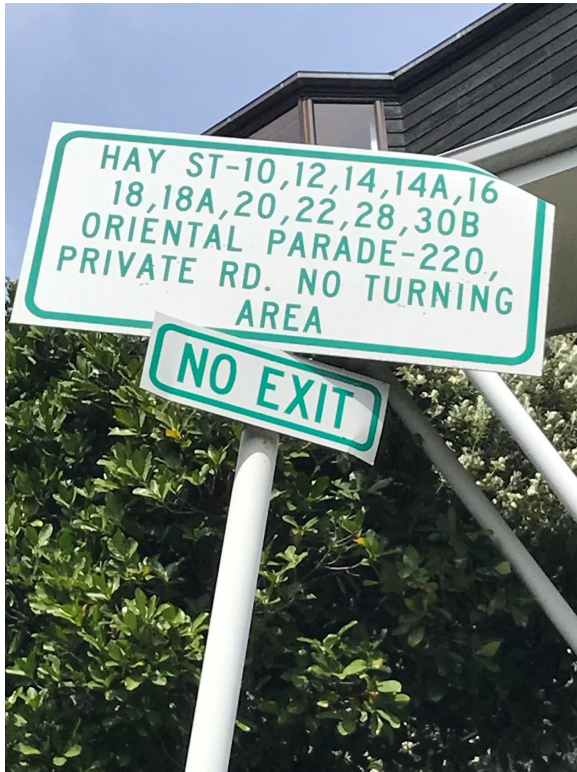
Table 6: Comparison of Adopted Spatial Plan and Officer Recommended Spatial Plan estimated growth distribution figures for the inner suburbs

Suburb	Officer Recommended Spatial Plan		Adopted Spatial Plan (with Councillor decisions applied)		Estimated dwelling and population increase/decrease	
	Estimated Dwellings	Estimated People	Estimated Dwellings	Estimated People	Estimated Dwellings	Estimated People
Aro Valley*	95 to 215	240 to 540	180 to 270	445 to 675	+50 to +80	+130 to +210
Berhampore	120 to 275	285 to 650	175 to 300	410 to 705	+25 to +55	+55 to +120
Kelburn	305 to 550	760 to 1,380	370 to 605	920 to 1,510	+55 to +65	+30 to +160
Mount Cook*	110 to 200	270 to 505	120 to 220	300 to 545	+10 to +20	+25 to +40
Mount Victoria*	120 to 200	290 to 475	150 to 250	360 to 600	+30 to +50	+75 to +120
Newtown	340 to 650	900 to 1,725	460 to 750	1,215 to 1,945	+80 to +120	+220 to +315
Oriental Bay**	20	45 to 50	25 to 30	55 to 70	+5 to +10	+10 to +20
Thorndon*	95 to 290	200 to 440	40 to 130	80 to 265	-85 to -60	-125 to -175
Inner suburbs total	1,200 to 2,300	3,000 to 5,800	1,500 to 2,500	3,800 to 6300	+200 to +300	+500 to +800
* Does not include Central City Area dwellings						
** Does not include Central City Area dwellings or Oriental Bay Height Area						

Fire Engine Stuck on Hay Street March 2023



'Hay Street Extension'



With no turning, vehicles often reverse down this private roadway