

# Submission on Proposed District Plan Hearing Stream 1

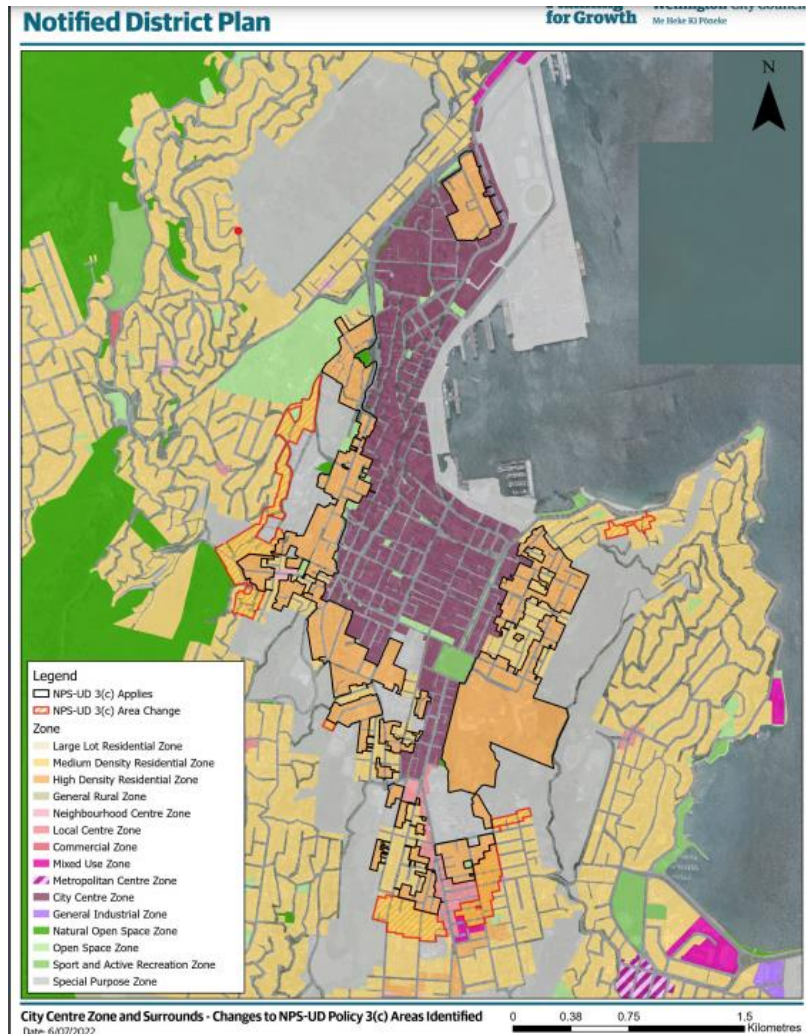
To accompany oral submission by Pukepuke Pari Residents Incorporated

Hearing date: 22 February

# The following slides

- Proposed walkable catchment increase (in Council's 42A report)
- Issues relevant to walkability of Hay Street, Oriental Bay
  - Steep slopes
  - Extreme winds
  - Safety

# Changes between 15-minute and 10-minute walkable catchment



<https://wellington.govt.nz/-/media/your-council/plans-policies-and-bylaws/district-plan/proposed-district-plan/reports/supplementary-documents/map-identifying-changes-between-15-minute-and-10-minute-walkable-catchment-adopted-of-the-city-centr.pdf?la=en&hash=A43773866C2DDA80520723559AB8734FDF4CD376>

# Oriental Bay Portion (part of previous slide)





# Hay Street

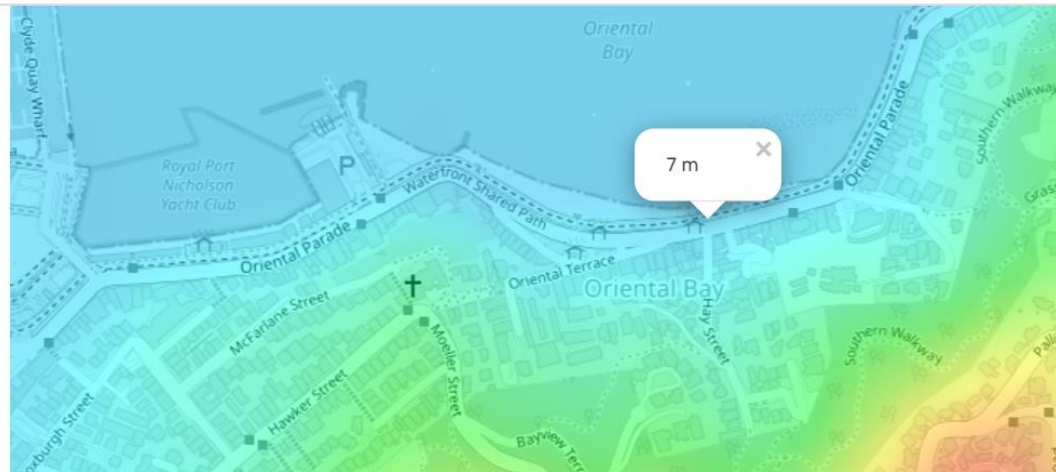




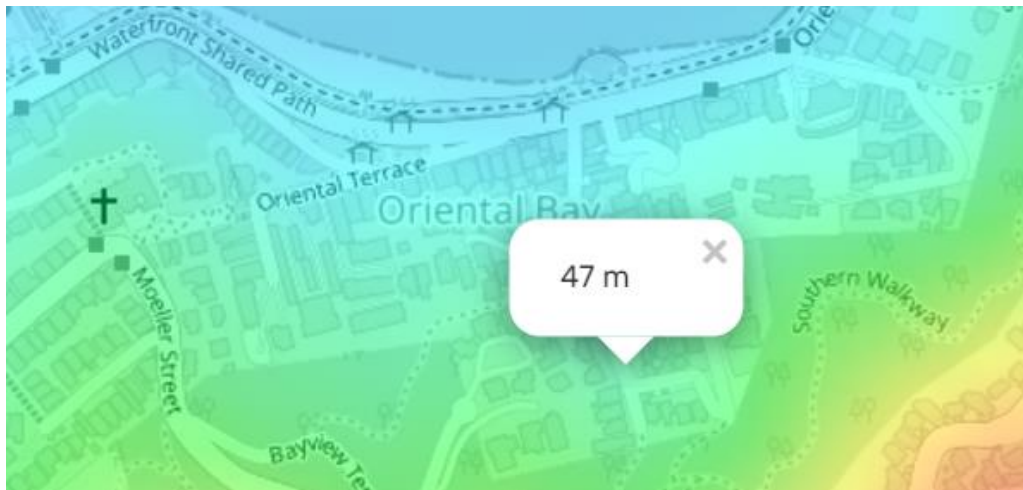
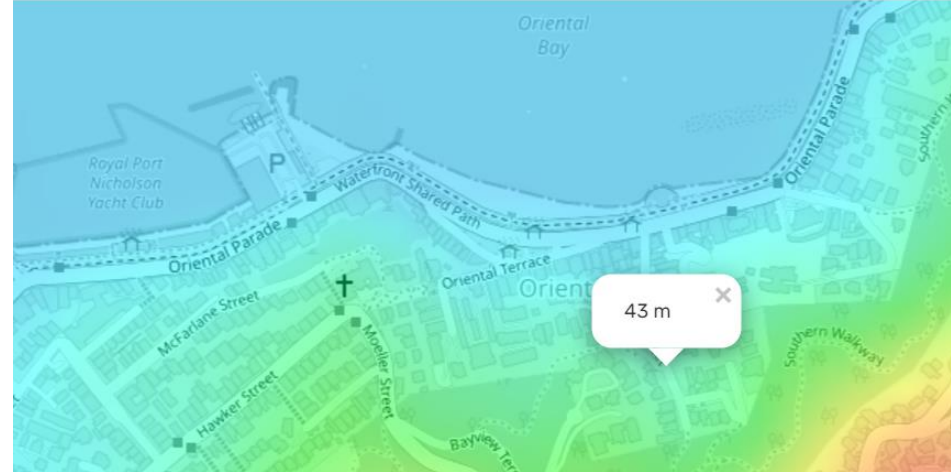
# Elevation for Hay Street, Oriental Bay

Vertical rise is equivalent to around 13 flights of steps

en-nz.topographic-map.com/map-gnx57/Wellington/?center=-41.29051%2C174.79781&zo



en-nz.topographic-map.com/map-gnx57/Wellington/?center=-41.29051%2C174.7978



Google

how many metres is a flight of steps?

All Images Shopping News Maps More

About 27,000,000 results (0.52 seconds)

"A flight of stairs is counted as approximately 10 feet (**3 Meters**) of elevation gain (approximately 16 steps). 22/02/2018

# Days with Strong Wind in New Zealand Cities

Table 4. Mean number of days per year with gusts exceeding 61 km/hr (33 knots) and 94 km/hr (50 knots). Note 34-40 knot winds are defined as gale force on the Beaufort Scale, and 48-55 knot winds are defined as storm force.

	Days with gusts >61 km/hr	Days with gusts >94 km/hr
Whangarei Aero Aws	27	0.9
Auckland Aero	55	3
Tauranga Aero Aws	30	0.4
Hamilton Aws	21	0.4
Taupo Aws	30	0.3
Gisborne Aws	32	0.8
Napier Aero Aws	52	2
New Plymouth Aws	74	3
Palmerston North Aws	62	2
Wellington, Kelburn Aws	198	52
Nelson Aws	40	0.4
Blenheim Aero Aws	42	0.5
Greymouth Aero Ews	44	0.9
Christchurch Aero	51	1
Lake Tekapo Ews	72	5
Alexandra Aws	52	1
Dunedin, Musselburgh Ews	94	4
Milford Sound Aws	47	7
Invercargill Aero Aws	109	14



[https://niwa.co.nz/static/web/NZ\\_Climate-NIWA.pdf](https://niwa.co.nz/static/web/NZ_Climate-NIWA.pdf)

# WCC Wind Zone 3 (in light grey)



## Wind Codes and Wind Zones:

- 1 Low Wind (L).
- 2 Medium Wind (M).
- 3 High Wind (H).
- 4 Very High Wind (VH).
- 5 Specific Design (zone outside the scope of NZS3604:2011) (SEG).
- 6 Extra High (EH). 1000 Unknown.

Absolutely Positively  
**Wellington City Council**  
Me Heke Ki Pōneke

### WindZones

WCC WCC  
Wellington City Council

[View Full Details](#)

[Download](#)

#### Details

- Dataset**  
Feature Layer
- September 15, 2020**  
Info Updated
- September 15, 2020**  
Data Updated
- January 3, 2020**  
Published Date
- 118 Records**  
[View data table](#)

118 records

Wind Zone	
OBJECTID	43
wind_zone	H
wind_code	3
Shape	undefined
Shape_Length	8,438.231
Shape_Area	1,294,459.841

Wind code: 1,000



# WCC Wind Zone 6 (in light grey)

## Wind Codes and Wind Zones:

- 1 Low Wind (L).
- 2 Medium Wind (M).
- 3 High Wind (H).
- 4 Very High Wind (VH).
- 5 Specific Design (zone outside the scope of NZS3604:2011) (SEG).
- 6 Extra High (EH). 1000 Unknown.



Absolutely Positively  
**Wellington City Council**  
Me Heke Ki Pōneke

### WindZones

WCC WCC  
Wellington City Council

[View Full Details](#)

[Download](#)

#### Details

**Dataset**  
Feature Layer

**September 15, 2020**  
Info Updated

**September 15, 2020**  
Data Updated

**January 3, 2020**  
Published Date

**118 Records**  
[View data table](#)

[I want to use this](#)

Wind Zone	
OBJECTID	33
wind_zone	EH
wind_code	6
Shape	undefined
Shape_Length	16,239.236
Shape_Area	1,352,421.647

Zoom to

# 'Hay Street Extension'



'Hay Street  
Extension'

# 'Hay Street Extension'



With no turning, vehicles often reverse down this private roadway