

# Creswick Valley Residents Association

Presentation to Wellington City Council  
Draft Town Belt Management Plan



James Stellin (Snr) 1881 – 1964  
Soldiers Lawn, Taita Cemetery. RIP

# Creswick Valley Residents Association

- Based in Northland
- Formed in 2012
- Creswick Valley stretches from Zealandia to Wilton and includes Albemarle Stream (Reserve?) to Stellin Memorial Park and Tinakori Hill

# Extract from Scots College Old Boys Association Submission

The gift of Stellin Park to the city by James Stellin ( Snr) in memory of his son was a most significant gesture which to date has not been as well recognised as would be appropriate. Accordingly the Scots College Old Boys' Association requests that –

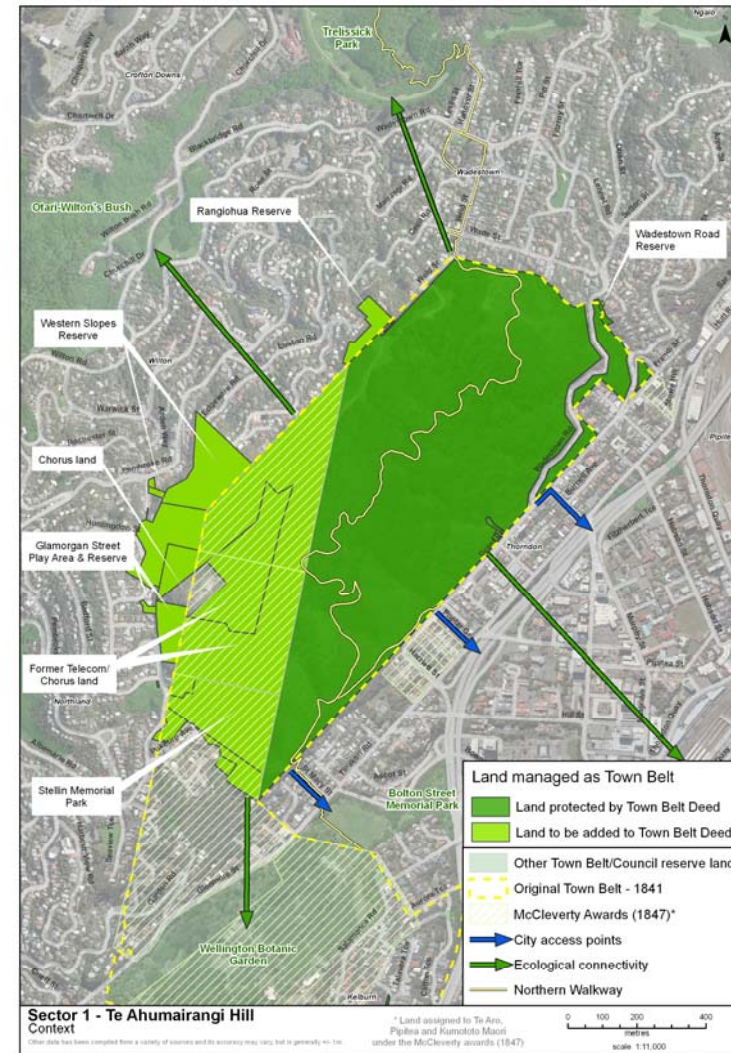
# Stellin Memorial Park

- James Stellin (1881 -1964)
- Bookmaker , Anzac
- Local land developer (Wgtn Region)
- Orangi Kaupapa lands 1912
- 1964 Bequest to WCC upon Trust
- Motorway, American Embassy, Act of Parliament etc
- Memorial to his son, Lookout
- RSA, St Maclou La Briere



# Submission Focus - Access & Heritage

- Tinakori Hill
- Stellin Memorial Park
- + some McCleverty Settlement land
- + miscellaneous James Stellin Estate



# Te Ahumairangi sector additional land



## Reasons for including this additional land

- Visual and physical continuity
- Significant landscape values
- Ecological connectivity
- Linkage to Botanic Garden
- Part of original Town Belt

# Decisions sought

- Statement of Intent to create a pedestrian link from SMP to Botanic Garden
- Retain Stellin Name but include in TownBelt.
- Boundary markers denoting bequest
- History Project (budget \$100)





# Stellin Memorials



James Stellin (Snr) 1881 – 1964  
Soldiers Lawn, Taita Cemetery. RIP



Place Stellin  
St Maclou La Briere  
2006

# Thank You



Mayor Prendergast visit to St Maclou La Briere  
April 2009