

---

ORDINARY MEETING  
OF  
TAWA COMMUNITY BOARD  
AGENDA

Time: 7.00pm  
Date: Tuesday, 8 March 2022  
Venue: Virtual meeting

---

**MEMBERSHIP**

Councillor Condie  
Councillor Day  
Janryll Fernandez  
Graeme Hansen  
Richard Herbert  
Jackson Lacy (Deputy Chair)  
Robyn Parkinson (Chair)  
Anna Scott

**Have your say!**

*You can make a short presentation to the Board members at this meeting. Please let us know by noon the working day before the meeting. You can do this either by phoning 04-803-8334, emailing [public.participation@wcc.govt.nz](mailto:public.participation@wcc.govt.nz) or writing to Democracy Services, Wellington City Council, PO Box 2199, Wellington, giving your name, phone number, and the issue you would like to talk about. All Council and committee meetings are livestreamed on our YouTube page. This includes any public participation at the meeting.*

---



---

**TABLE OF CONTENTS**  
**8 MARCH 2022**

---

<b>Business</b>	<b>Page No.</b>
<b>1. Meeting Conduct</b>	<b>5</b>
<b>1.1 Karakia</b>	<b>5</b>
<b>1.2 Apologies</b>	<b>5</b>
<b>1.3 Conflict of Interest Declarations</b>	<b>5</b>
<b>1.4 Confirmation of Minutes</b>	<b>5</b>
<b>1.5 Tawa Community Board Service Award</b>	<b>5</b>
<b>1.6 Public Participation</b>	<b>5</b>
<b>1.7 Items not on the Agenda</b>	<b>5</b>
<b>2. Oral Reports</b>	<b>7</b>
<b>2.1 Oral Updates</b>	<b>7</b>
<b>3. Reports</b>	<b>13</b>
<b>3.1 Strategic Bike Network - Recommended changes for Tawa</b>	<b>13</b>
<b>3.2 Resource consents applications and approvals for 1 February 2022 to 27 February 2022</b>	<b>19</b>
<b>3.3 Tawa Community Board Discretionary Fund - Monthly Allocations 2021/2022</b>	<b>21</b>
<b>3.4 Current and Upcoming Consultations and Engagements</b>	<b>25</b>
<b>3.5 Forward Programme</b>	<b>31</b>



---

## 1. Meeting Conduct

---

### 1.1 Karakia

The Chairperson will open the meeting with a karakia.

<b>Kia hora te marino</b>	May peace be widespread.
<b>Kia whakapapa pounamu te moana</b>	May the sea be like greenstone;
<b>Hei huarahi mā tatou i te rangi nei</b>	a pathway for all of us this day.
<b>Aroha atu, aroha mai</b>	Let us show respect for each other,
<b>Tātou i a tātou katoa.</b>	love for one another.

At the appropriate time, the following karakia will be read to close the meeting.

<b>Kia whakairia te tapu</b>	Restrictions are moved aside,
<b>Kia wātea ai te ara</b>	so the pathway is clear to return to
<b>Kia turuki whakataha ai</b>	everyday activities.
<b>Kia turuki whakataha ai</b>	Let us be united.
<b>Haumi e. Hui e. Tāiki e!</b>	

### 1.2 Apologies

The Chairperson invites notice from members of apologies, including apologies for lateness and early departure from the meeting, where leave of absence has not previously been granted.

### 1.3 Conflict of Interest Declarations

Members are reminded of the need to be vigilant to stand aside from decision making when a conflict arises between their role as a member and any private or other external interest they might have.

### 1.4 Confirmation of Minutes

The minutes of the meeting held on 8 February 2022 will be put to the Tawa Community Board for confirmation.

### 1.5 Tawa Community Board Service Award

A Tawa Community Board Service Award may be presented.

### 1.6 Public Participation

A maximum of 60 minutes is set aside for public participation at the commencement of any meeting of the Council or committee that is open to the public. Under Standing Order 3.23.3 a written, oral or electronic application to address the meeting setting forth the subject, is required to be lodged with the Chief Executive by 12.00 noon of the working day prior to the meeting concerned, and subsequently approved by the Chairperson.

### 1.7 Items not on the Agenda

Any item not on the agenda may only be discussed if a motion to discuss the item is passed by a unanimous resolution of the meeting; and:

1. The item is a minor item relating to the general business of the local authority; and

- 
2. The Chairperson explains at the beginning of the meeting, at a time when it is open to the public, that the item will be discussed at the meeting but no resolution, decision or recommendation may be made in respect of that item except to refer that item to a subsequent meeting for further discussion; and
  3. The Chairperson explains to the meeting why the item is not on the agenda and the reason why discussion of the item cannot be delayed.

---

2. Oral Reports

---

---

## ORAL UPDATES

---

### Kōrero taunaki Summary of considerations

#### Purpose

1. This report to Tawa Community Board provides an opportunity to Council officers, external organisations and Tawa Community Board members to share progress on relevant issues.

#### Strategic alignment with community wellbeing outcomes and priority areas

Aligns with the following strategies and priority areas:

- |  |  |
|--|--|
| <input checked="" type="checkbox"/> Sustainable, natural eco city                      | <input checked="" type="checkbox"/> People friendly, compact, safe and accessible capital city         |
| <input type="checkbox"/> Innovative, inclusive and creative city                       | <input type="checkbox"/> Dynamic and sustainable economy   |
| <b>Strategic alignment with priority objective areas from Long-term Plan 2021–2031</b> | <input checked="" type="checkbox"/> Functioning, resilient and reliable three waters infrastructure    |
|  | <input type="checkbox"/> Affordable, resilient and safe place to live                                  |
|  | <input checked="" type="checkbox"/> Safe, resilient and reliable core transport infrastructure network |
|  | <input type="checkbox"/> Fit-for-purpose community, creative and cultural spaces                       |
|  | <input checked="" type="checkbox"/> Accelerating zero-carbon and waste-free transition                 |
|  | <input type="checkbox"/> Strong partnerships with mana whenua  |

#### Relevant Previous decisions

Speakers at this month's meeting were agreed at the previous Tawa Community Board meeting.

#### Financial considerations

- |   |  |   |
|---|--|---|
| <input checked="" type="checkbox"/> Nil | <input type="checkbox"/> Budgetary provision in Annual Plan / Long-term Plan | <input type="checkbox"/> Unbudgeted \$X |
|---|--|---|

2. There are no financial considerations associated with this report.

#### Risk

- |   |                                 |                               |                                  |
|---|---------------------------------|-------------------------------|----------------------------------|
| <input checked="" type="checkbox"/> Low | <input type="checkbox"/> Medium | <input type="checkbox"/> High | <input type="checkbox"/> Extreme |
|---|---------------------------------|-------------------------------|----------------------------------|

Author	Alisi Puloka, Democracy Advisor
Authoriser	Sean Johnson, Democracy Team Leader

### Taunakitanga

### **Officers' Recommendations**

Officers recommend the following motion

That the Tawa Community Board:

1. Receive the information.

### **Kōrerorero**

### **Discussion**

4. The following oral updates are scheduled to be delivered at this meeting:
  - a. Greater Wellington Regional Council, Transport update – Scott Gallagher
  - b. Fire Update – Dean Tutton
  - c. WREMO update
  - d. Spicer landfill issues – Porirua City Council
  - e. Tawa Community Board members' updates

### **Attachments**

Attachment 1. Members' update



# TAWA COMMUNITY BOARD

FOR MARCH 2022

## MEMBERS' UPDATE

### Purpose

1. To provide an update on Board activities and priorities actioned by its members, and note public feedback.

### Update to 1 March 2022

#### Planning

- Board received information on WCC/PCC boundary issues around Kenepuru Road, following feature in *Our Wellington*.

#### Roading, Transport

- Liaised with NZTA, Police and constituent in respect of Takapu Road/SH1 intersection.
- Main Road slip and road closure: responded to queries from Fyvie Ave residents (and others), liaised with WCC officer and kept community informed through social media.
- Several members engaged with Metlink/GWRC officers re on-demand transport trial, including through briefings at Tawa Residents' Association meeting and Tawa Liaison Meeting.
- Received invitation to participate in user testing for Metlink On Demand trial.
- Deputy Chair expressed Board's support for Ara Paiwhenua street naming during public participation time at WCC Pūroro Hātepe | Regulatory Processes Committee.
- Communication with WCC officer regarding no right turn sign at Redwood park n ride querying further support for road markings, comms for social media etc
- Chair attended Bike Network Plan workshop for Councillors
- Metlink advised delay of on demand bus trial due to pandemic pressures on staff

#### Youth Development

- Deputy Chair engaged with VSCT staff on Linden art therapy programme, and committed Board support in principle for promoting through social media etc.

#### Community Development

- Responded to a resident's inquiry regarding responsibility for care of berms.
- Deputy Chair attended meeting with community leaders regarding potential event in Wall Park.

# **TAWA COMMUNITY BOARD**

FOR MARCH 2022

## **MEMBERS' UPDATE**

- Several members attended Tawa Residents' Association meeting and Tawa Liaison Meeting.

### **Waste Management / carbon reduction**

- Queried lack of out of hours access to battery recycling at Tawa Community Centre

### **Economic Development**

- 

### **Public Spaces**

- 

### **Water / Resilience**

- Received further communication from resident regarding Bartlett Grove lighting - referred to WCC officers for further update.
- Received communication from Chorus regarding removal of copper wiring in Taylor Tce, Oriel Ave, Redwood Ave, Ngatitua St, and Woodman Dr.
- WREMO resilience survey completed
- Received information on waterways responsibilities in Tawa as requested

### **Governance**

- Chair joined weekly meeting with ward Councillors, local MP, Tawa Business Group to monitor / share information on community needs relating to pandemic
- Deputy Chair met (in personal capacity) with Trustees of Tawa Borough Scholarship Award Trust to discuss the Trust's operations and future direction.
- Potential new trustee for Tawa Borough Scholarship approached and confirmed their willingness
- 

### **Feedback, requests, complaints received:**

# **TAWA COMMUNITY BOARD**

**FOR MARCH 2022**

## **MEMBERS' UPDATE**

- Complaint re water leaks in Victory Cres and outside Tawa Community Centre - referred to officers.
- Query regarding format and timing of Tawa civic awards
- Concern from resident about roundabouts being blocked around Hinau/McClellan st - advised report to police.
- Resident requested cycleway to Johnsonville
- Resident queried ETA to completion of Linden Railway Station upgrade



3. Reports

## STRATEGIC BIKE NETWORK - RECOMENDED CHANGES FOR TAWA

### Kōrero taunaki | Summary of considerations

#### Purpose

1. This report to Tawa Community Board brings a list of the changes in Tawa to the strategic bike network that will be considered by the Pūroro Āmua | Planning and Environment Committee at its meeting of 10 March 2022.

#### Strategic alignment with community wellbeing outcomes and priority areas

Aligns with the following strategies and priority areas:

#### Strategic alignment with priority objective areas from Long-term Plan 2021–2031

- Sustainable, natural eco city
- People friendly, compact, safe and accessible capital city
- Innovative, inclusive and creative city
- Dynamic and sustainable economy
- Functioning, resilient and reliable three waters infrastructure
- Affordable, resilient and safe place to live
- Safe, resilient and reliable core transport infrastructure network
- Fit-for-purpose community, creative and cultural spaces
- Accelerating zero-carbon and waste-free transition
- Strong partnerships with mana whenua

#### Relevant Previous decisions

Through the development of the Long-term Plan 2021-2031, the Council decided to provide \$226 million over 10-years for the accelerated development of a connected bike network and requested a refresh of the Cycleways Masterplan 2015.

The Pūroro Āmua | Planning and Environment Committee, at its meeting on 23 September 2021, approved the release of a draft Bike Network Plan (refreshed Cycleways Masterplan) for consultation.

#### Financial considerations

- Nil       Budgetary provision in Annual Plan / Long-term Plan       Unbudgeted \$X

2. The long-term plan has provided \$226 million CAPEX funding to deliver a connected network of bike lanes across the city over the next 10-years.

#### Risk

- Low       Medium       High       Extreme

3. Adopting the network plan is a decision of high significance under the Council's significance and engagement policy, and therefore has been consulted on. Consultation on Paneke Pōneke ran for 6 weeks (concurrently with the draft District Plan and LGWM MRT options) in November and December 2021.
4. The high-level traffic resolution that comes with the adoption of Paneke Pōneke reflects the strategic bike network defined in the plan. Subsequent processes including trials and statutory decisions will implement rule changes for discrete sections of road, considering these higher-level decisions.
5. Delivery risks are inherent with a complex programme of this nature. Street space reallocation projects that prioritise walking, cycling and public transport are difficult, creating conflict with on street parking for both residents and businesses. There is also uncertainty in the actual scope, cost, and timeframes for delivery of the individual projects. Risks are reduced as these matters are clarified as the projects progress and community engagement and consultation occurs, complimented with scoping, detailed design and construction phases.
6. As reported to the Pūroro Āmua | Planning and Environment Committee on 14 October 2021, the construction market has entered a period of likely sustained labour shortages and supply chain interruptions. Constrained internal resources and professional services have the potential to delay the planning stages of projects. Together these factors are already resulting in price escalations and constraints on the market's ability to deliver.

Authors	Paul Barker, Transport Planning Manager Vida Christeller, Manager City Design & Place Planning
Authoriser	Liam Hodgetts, Chief Planning Officer

## **Taunakitanga | Officers' Recommendations**

Officers recommend the following motion

That the Tawa Community Board:

1. Receive the information.
2. Note that the Pūroro Āmua | Planning and Environment Committee will be asked to make the following changes to the draft strategic bike network as they pertain to Tawa:
  - a. Changing primary route to follow Duncan Street from Tawa College to McLellan Street. The existing path near Grasslees Park changes from primary to secondary.
  - b. Adding Oxford Street and Cambridge Street to the secondary network, connecting Tawa pool to Tawa centre.
  - c. Adding a secondary connection from Takapu Station to Jamacia Drive to connect the Grenada North development area.

## **Whakarāpopoto | Executive Summary**

8. The Tawa Community Board is asked to note the report being presented to the Pūroro Āmua | Planning and Environment Committee on the adoption of the Bike Network Plan as it makes recommendations following public consultation in late 2021 to the network in Tawa.

## **Takenga mai | Background**

9. The Council's Long-term Plan 2021-2031 has provided \$226 million over the next 10-years to accelerate delivery a connected bike network. This is in addition to substantial investments expected by the Let's Get Wellington Moving programme which will provide walking, cycling and bus priority improvements on routes to and through the city centre, and projects addressing mass rapid transport, travel demand management and state highway improvements.
10. The Annual Plan/Long-term Plan Committee on 27 May 2021 made the following decisions:
  - 10A. *Agree to adopt option 4 rather than option 3 for the delivery of future cycling infrastructure, including:*
    - (i) *Instruct officers to refresh the Cycleways masterplan from 2015 and reprioritise the priority order and cost of delivery of projects.*
    - (ii) *Bring forward \$52M capex to years 1-3.*
    - (iii) *Instruct officers to report back on options for accelerated delivery.*
    - (iv) *Instruct officers to work with Greater Wellington to ensure that the Public Transport Network works with accelerated delivery.*
11. The draft Bike Network Plan addresses decisions 10A (i) to (iii). The draft plan is a refresh of the 2015 Cycleways Masterplan. It includes an explanation of a rapid rollout programme, now called the transitional programme; and contains an explanation of the build back better approach. The plan, and a strategic network traffic resolution were approved for consultation by the Committee on 23 September 2021.

12. Consultation was undertaken between 1 November and 15 December 2021 alongside coordinated consultations on the draft District Plan and Let's Get Wellington Moving. In total, we had 1140 individuals and organisations provide feedback directly on the plan, with cycling related feedback also coming through the District Plan and Mass Transit options. A copy of the submissions is published alongside the agenda on the Council's website.

### **Kōrerorero | Discussion**

13. Many submitters wanted to amend or add more connections to the strategic bike network. Officers have considered the feedback and are recommending a number of changes be made to the final strategic bike network.
14. For the Tawa area officers have recommended three changes to the network as consulted on these are:
  - a. Changing primary route to follow Duncan Street from Tawa College to McLellan Street. The existing path near Grasslees Park changes from primary to secondary.
  - b. Adding Oxford Street and Cambridge Street to the secondary network, connecting Tawa pool to Tawa centre.
  - c. Adding a secondary connection from Takapu Station to Jamacia Drive to connect the Grenada North development area.

### **Ngā mahinga e whai ake nei | Next actions**

15. Adoption of the strategic bike network that will be considered by the Pūroro Āmua | Planning and Environment Committee at its meeting of 10 March 2022.
16. The planning and delivery of the strategic bike network will be part of an overall Programme Management Plan. Once complete this plan will outline when individual sections will be scheduled for planning, design and delivery.
17. Planning aspects of the individual network sections or routes will be undertaken with the community including formal consultation as part of completing the business case. Project approval will be sought from the Pūroro Āmua | Planning and Environment Committee.
18. Scheduling delivery will be done to ensure other planned infrastructure works are taken into consideration.

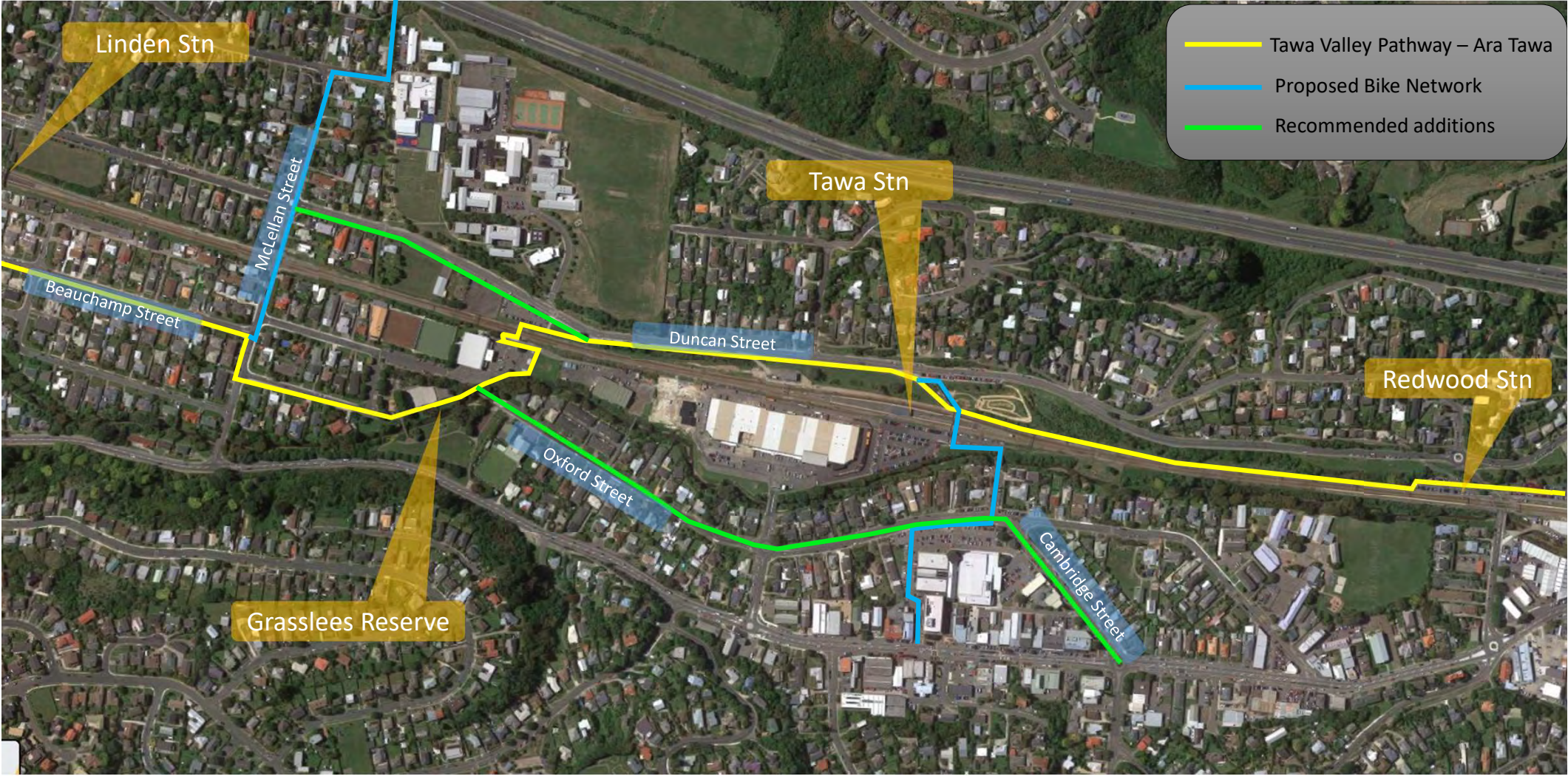
### **Attachments**

Attachment 1. Bike Network Plan - Tawa



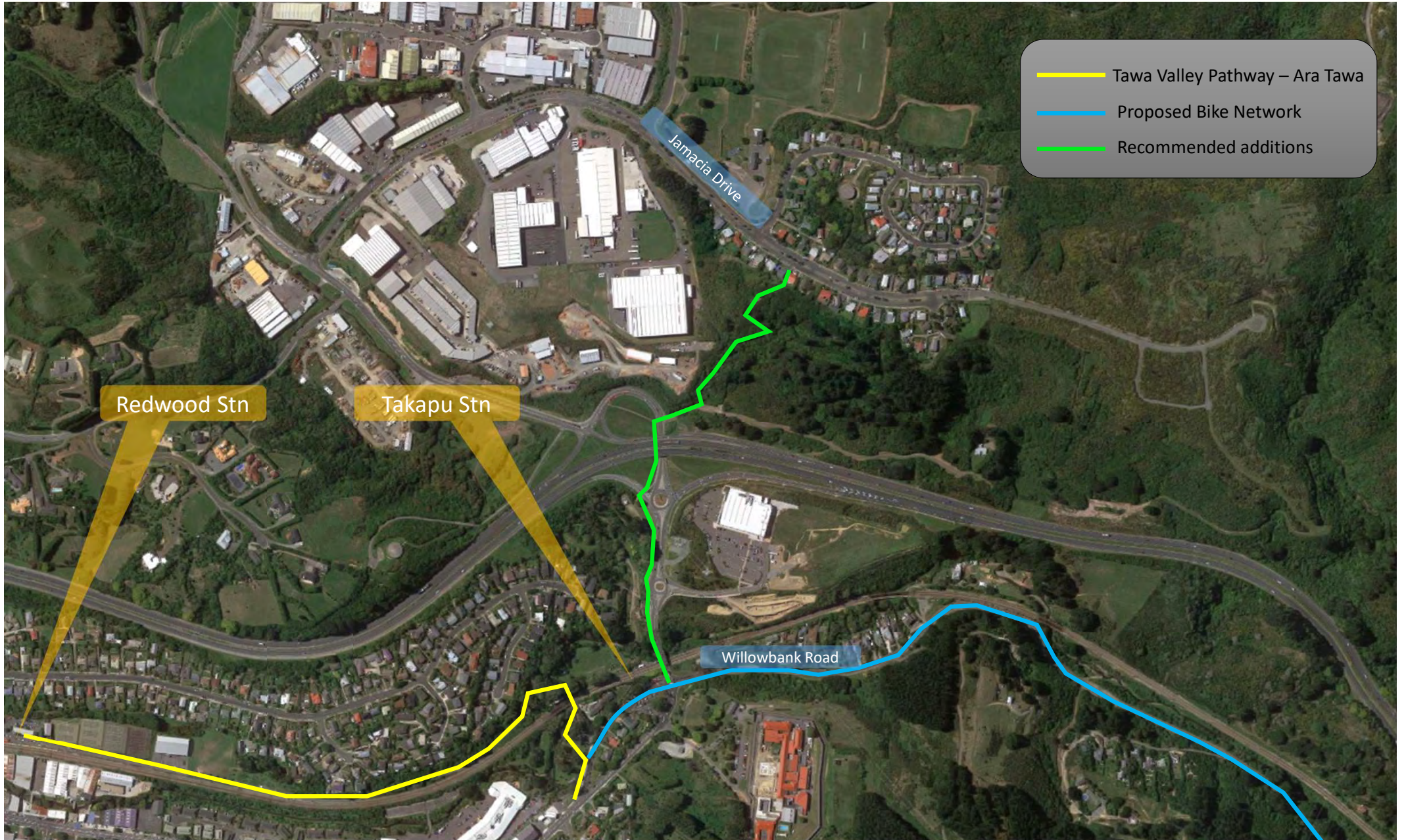
# Bike Network Plan

## Tawa



# Bike Network Plan

## Tawa



---

## **RESOURCE CONSENTS APPLICATIONS AND APPROVALS FOR 1 FEBRUARY 2022 TO 27 FEBRUARY 2022**

---

### **Kōrero taunaki**

### **Summary of considerations**

#### **Purpose**

1. This report to Tawa Community Board is to advise the Board of all resource consents lodged, along with decisions made by Officers acting under Delegated Authority, on Land Use and Subdivision resource consent applications, in accordance with an agreement reached with the Tawa Community Board.

#### **Strategic alignment with community wellbeing outcomes and priority areas**

Aligns with the following strategies and priority areas:

- |  |   |
|--|---|
| <b>Strategic alignment with priority objective areas from Long-term Plan 2021–2031</b> | <input type="checkbox"/> Sustainable, natural eco city                                      |
|  | <input type="checkbox"/> People friendly, compact, safe and accessible capital city         |
|  | <input type="checkbox"/> Innovative, inclusive and creative city                            |
|  | <input type="checkbox"/> Dynamic and sustainable economy                                    |
|  | <input type="checkbox"/> Functioning, resilient and reliable three waters infrastructure    |
|  | <input type="checkbox"/> Affordable, resilient and safe place to live                       |
|  | <input type="checkbox"/> Safe, resilient and reliable core transport infrastructure network |
|  | <input type="checkbox"/> Fit-for-purpose community, creative and cultural spaces            |
|  | <input type="checkbox"/> Accelerating zero-carbon and waste-free transition                 |
|  | <input type="checkbox"/> Strong partnerships with mana whenua                               |

#### **Financial considerations**

- |   |  |   |
|---|--|---|
| <input checked="" type="checkbox"/> Nil | <input type="checkbox"/> Budgetary provision in Annual Plan / Long-term Plan | <input type="checkbox"/> Unbudgeted \$X |
|---|--|---|

#### **Risk**

- |   |                                 |                               |                                  |
|---|---------------------------------|-------------------------------|----------------------------------|
| <input checked="" type="checkbox"/> Low | <input type="checkbox"/> Medium | <input type="checkbox"/> High | <input type="checkbox"/> Extreme |
|---|---------------------------------|-------------------------------|----------------------------------|

Author	Nicole Tydda, Manager Customer Service and Business Support
Authoriser	Bill Stevens, Resource Consents Team Leader Liam Hodgetts, Chief Planning Officer

#### **Taunakitanga**

#### **Officers' Recommendations**

Officers recommend the following motion

That the Tawa Community Board:

1. Receive the information.

#### **Whakarāpopoto**

### Executive Summary

4. This report advises the Community Board of resource consents lodged and decisions made during the period 1 February 2022 to 27 February 2022.

### Discussion

5. For the period from 1 February 2022 to 27 February 2022 there were four applications received by the Council.

<b><i>Service Request</i></b>	<b><i>Address</i></b>	<b><i>Applicant</i></b>
<b>509914</b>	<b>104 Woodburn Drive, Takapu Valley</b>	<b>Sam Catsburgh</b>
Land use and subdivision consent for two new dwellings and a three-lot fee simple subdivision.		
<b>508715</b>	<b>290 Main Road, Tawa</b>	<b>Progressive Homes Ltd</b>
Land use and subdivision consent for earthworks, a ten unit multi-unit development and an 18-lot fee simple subdivision.		
<b>508722</b>	<b>237 Main Road, Tawa</b>	<b>Douglas Muir</b>
Land use and subdivision consent for earthworks, a new dwelling and a two-lot fee simple subdivision.		
<b>508865</b>	<b>12 Nathan Street, Tawa</b>	<b>Stephen Henderson</b>
Subdivision consent for a two-lot fee simple subdivision		

6. For the period from 1 February 2022 to 27 February 2022, there was one application approved under delegated authority.

<b><i>Service Request</i></b>	<b><i>Address</i></b>	<b><i>Applicant</i></b>
<b>505696</b>	<b>11 Rangatira Road, Tawa</b>	<b>Stantec New Zealand</b>
Outline Plan for a Linden to Tawa third lane merge and shoulder within the existing designation.		

### Ngā mahinga e whai ake nei

### Next actions

### Attachments

Nil

---

## **TAWA COMMUNITY BOARD DISCRETIONARY FUND - MONTHLY ALLOCATIONS 2021/2022**

---

### **Kōrero taunaki Summary of considerations**

#### **Purpose**

1. This report asks Tawa Community Board to approve by resolution the spending of the Tawa Community Board Discretionary Fund.

#### **Strategic alignment with community wellbeing outcomes and priority areas**

Aligns with the following strategies and priority areas:

- Sustainable, natural eco city
- People friendly, compact, safe and accessible capital city
- Innovative, inclusive and creative city
- Dynamic and sustainable economy
  
- Functioning, resilient and reliable three waters infrastructure
- Affordable, resilient and safe place to live
- Safe, resilient and reliable core transport infrastructure network
- Fit-for-purpose community, creative and cultural spaces
- Accelerating zero-carbon and waste-free transition
- Strong partnerships with mana whenua

#### **Strategic alignment with priority objective areas from Long-term Plan 2021–2031**

#### **Relevant Previous decisions**

Outline relevant previous decisions that pertain to the material being considered in this paper.

#### **Financial considerations**

- Nil       Budgetary provision in Annual Plan / Long-term Plan       Unbudgeted \$X

#### **Risk**

- Low       Medium       High       Extreme

Author	Alisi Puloka, Democracy Advisor
Authoriser	Sean Johnson, Democracy Team Leader

## **Taunakitanga**

### **Officers' Recommendations**

Officers recommend the following motion

That the Tawa Community Board:

1. Receive the information.

## **Takenga mai**

### **Background**

3. The Tawa Community Board's Discretionary Fund is administered by Wellington City Council and for the 2021/2022 financial year the fund totals \$15,330.54 exclusive of GST.
4. At every Board meeting, the Board decides whether to make any payments from its Discretionary Fund for projects that directly benefit residents or organisations in Tawa. The payments are authorised by passing a resolution stating the amount of the payment/s, what the payment/s is to be used for and who it is they are going to.
5. The Board does not invite applications to the discretionary fund.
6. In February 2020 the Board clarified that they would not consider requests by families or individuals for memorials, including those of former Board members. The discretionary fund is seen as being primarily to meet local community needs.
7. As the fund is discretionary, there is no commitment by the Board to repeat funding to any group in future from this pool, even if regular payments have been made in the past.
8. The Board agreed that it may retrospectively approve funds of up to \$500 for one-off activities to cater for immediate needs via reimbursement. The retrospective vote will take place at the next Board meeting.
9. Accruals are for the cost of work completed by 30 June but not yet paid for. These must be for specific items or organisations.
10. Funds cannot be spent other than for the purpose(s) specified in the Board's resolution.
11. Members, who require reimbursement from the fund for approved expenditure, are to supply receipts and details of the expenditure on the reimbursement form.
12. Reimbursements will be paid on a monthly basis. Details and receipts need to be provided, preferably within two months of expenditure.
13. The Council officer will track Board resolutions which approve expenditure from the fund, and any accountability requested by the Board.
14. Motions requiring direct payment to an organisation or business will be actioned by the officer and in conjunction with the Chair, shall ensure an appropriate level of detail is kept on record.
15. Funds given to groups or organisations will require an appropriate level of accountability, with proof of expenditure and accompanying details of use reported back to the Board within six months.
16. Groups or organisations who have not previously received funds from the Board will be asked to provide evidence of good financial practice, or oversight from another established and trusted organisation.

## **Kōrerorero**

### **Discussion**

17. The Finance Team, in discussion with Democracy Services, have advised the following:
  - a. Once the General Ledger is closed off for the year ending 30 June, it is not possible to allocate transactions to the previous year's Discretionary Fund. In real terms, this means that any manual payment forms (reimbursements, donations et cetera) received after 22 June or invoices received after 24 June will be paid out of the next year's Discretionary Fund.
  - b. Unspent Tawa Community Board Discretionary Funds are not able to be carried over to a future financial year.
18. The remaining balance of the 2021/2022 Discretionary Fund at 01 March 2022 is \$7,833.18.
19. Attachment One is the annual breakdown of spending for the financial period of 2021/2022.

### **Attachments**

Attachment 1. March - TCB Discretionary Fund





## CURRENT AND UPCOMING CONSULTATIONS AND ENGAGEMENTS

### Kōrero taunaki Summary of considerations

#### Purpose

1. This report to Tawa Community Board provides an update on the current items Council is seeking public feedback on and to advise the Board on upcoming consultations or surveys the Council is undertaking.

#### Strategic alignment with community wellbeing outcomes and priority areas

Aligns with the following strategies and priority areas:

- Sustainable, natural eco city
  - People friendly, compact, safe and accessible capital city
  - Innovative, inclusive and creative city
  - Dynamic and sustainable economy
- Strategic alignment with priority objective areas from Long-term Plan 2021–2031**
- Functioning, resilient and reliable three waters infrastructure
  - Affordable, resilient and safe place to live
  - Safe, resilient and reliable core transport infrastructure network
  - Fit-for-purpose community, creative and cultural spaces
  - Accelerating zero-carbon and waste-free transition
  - Strong partnerships with mana whenua

#### Relevant Previous decisions

Outline relevant previous decisions that pertain to the material being considered in this paper.

#### Financial considerations

- Nil       Budgetary provision in Annual Plan / Long-term Plan       Unbudgeted \$X

2. There are no financial considerations for this report.

#### Risk

- Low       Medium       High       Extreme

Author	Alisi Puloka, Democracy Advisor
Authoriser	Sean Johnson, Democracy Team Leader

### Taunakitanga

#### Officers' Recommendations

Officers recommend the following motion

That the Tawa Community Board:

3. Receive the information.

---

## Whakarāpopoto

### Executive Summary

4. The upcoming consultations and engagements are as follows:

- **Traffic Resolutions:**

**TR24-22**

**Court Road, Tawa - No Stopping At All Times**

Consultation for this project closes **5pm Sunday 13 March 2022**.

Further information on the consultation can be found at this link:

<https://www.letstalk.wellington.govt.nz/traffic-resolutions-april22>

- Consultation on the 2022-23 Annual Plan and Long-term Plan Amendment is on the agenda for approval at the 29 March 2022 Pūroro Māherehere | Annual Plan and Long-term Plan Committee meeting. Consultation is likely to open in early April 2022.

## Ngā mahinga e whai ake nei

### Next actions

5. Should the Board wish to participate in the consultations, there is no requirement for the Board to formally ratify this.
6. The Board has agreed that submissions can be noted in the members' update, as well as any opposition to the submissions. A copy of submission is to be attached to the member's update.

### Attachments

Attachment 1. TR24-22

# We are proposing a change in your area

Kia ora,

This leaflet is to let you know about a change we are proposing to make in your neighbourhood.

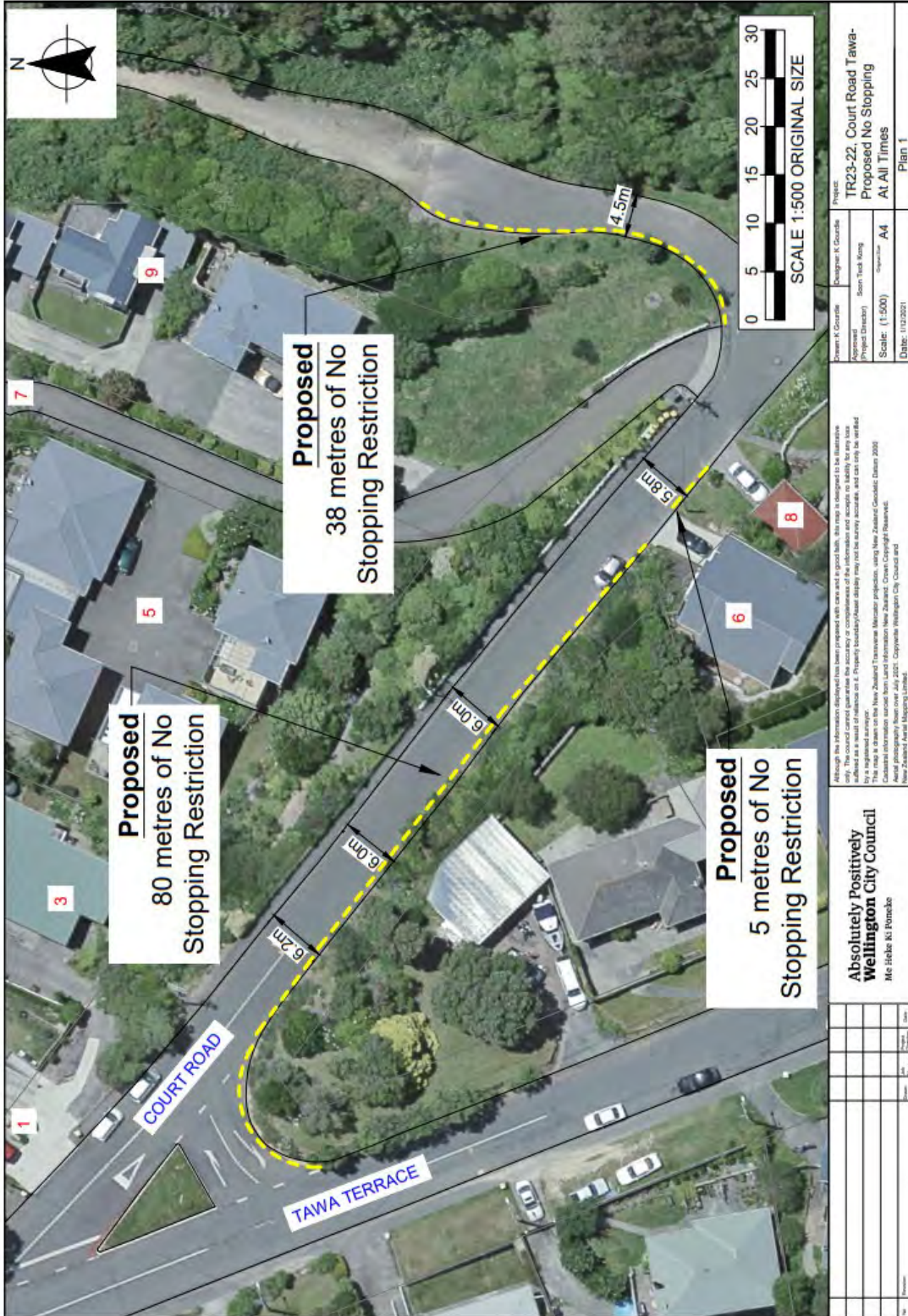
## Proposal:

<b>Reference</b>	TR24-22 Court Road, Tawa - No Stopping At All Times
<b>What we'd like to do</b>	<ul style="list-style-type: none"><li>• Install 38 metres of broken yellow lines on the southern end of Court Road and 85 metres of broken yellow lines on the north western side of Court Road.</li></ul>
<b>Why we are proposing the change</b>	<ul style="list-style-type: none"><li>• We have received safety and accessibility concerns from local residents about vehicles parking on both sides of the road blocking traffic and local access to their properties at the end of Court Road.</li><li>• The road width measures approximately 6.2 metres at the widest section, which is insufficient for moving vehicles to pass when vehicles are parked on both sides of the road.</li><li>• To ensure there is adequate space for a vehicle to safely travel through the road and provide unhindered access for emergency service vehicles and large vehicles such as rubbish/recycling trucks, we propose the broken yellow lines along these sections of Court Road.</li></ul>
<b>Location – where we propose to make the change</b>	Court Road, Tawa – between no.3 to no.12
<b>Impact</b>	<ul style="list-style-type: none"><li>• Improves safety and accessibility for vehicles travelling along Court Road.</li><li>• Net parking impact - removal of up to 24 unrestricted parking spaces.</li></ul>
<b>How this relates to the parking policy</b>	<ul style="list-style-type: none"><li>• Support safe movement – facilitate the safe and efficient movement of people and goods by focusing on people moving along transport corridors rather than people parking or storing stationary vehicles.</li></ul>
<b>Additional Information</b>	<ul style="list-style-type: none"><li>• To view the legal description for this Traffic Resolution, an electronic copy of the report will be available on the Council's website from 9.00am Monday 28 February 2022 at <a href="https://www.letstalk.wellington.govt.nz/">https://www.letstalk.wellington.govt.nz/</a> or you can call (04) 499 4444 and we will send one out to you.</li></ul>

# We are proposing a change in your area

<b>Feedback</b>	<ul style="list-style-type: none"><li>• If you would like to provide us with specific feedback, which will be added to the Traffic Resolution following consultation and made public in full, you can do so by filling out an online submission form, downloading a printable submission form on <a href="https://www.letstalk.wellington.govt.nz/">https://www.letstalk.wellington.govt.nz/</a> or emailing us at <a href="mailto:trfeedback@wcc.govt.nz">trfeedback@wcc.govt.nz</a>. <b>Please note if you are giving feedback the consultation period opens at 9.00 am Monday 28 February 2022 and finishes at 5.00 pm Sunday 13 March 2022.</b></li><li>• What we do with your personal information: All submissions (<b>including your name</b>, but not contact details) are provided <b>in their entirety</b> to elected members and made available to the public on our website and at our office. Personal information (including contact details) will also be used for the administration of the consultation process including informing you of the outcome of the consultation. All information collected will be held by Wellington City Council, 113 The Terrace, Wellington, with submitters having the right to access and correct personal information.</li></ul>
<b>Next Steps</b>	<ol style="list-style-type: none"><li>1. Feedback collated by Monday 14 March 2022.</li><li>2. The proposal will go to the Regulatory Processes Committee on Wednesday 13 April 2022.</li><li>3. If approved, the proposal will be installed within the following three months.</li></ol>

## Traffic Resolution Plan: TR24-22 Court Road, Tawa – No Stopping At All Times



# We are proposing a change in your area

## Legal Description:

### Add to Schedule D (No Stopping) of the Traffic Restrictions Schedule

Column One	Column Two	Column Three
<b>Court Road</b>	<i>No Stopping At All Times</i>	<i>South side, commencing at its intersection with Tawa Terrace (Grid coordinates X=1,753,389.39m Y=5,440,524.28m) and extending in an easterly direction following the southern kerb line for 80 metres.</i>
<b>Court Road</b>	<i>No Stopping At All Times</i>	<i>South side, commencing 84 metres from its intersection with Tawa Terrace (Grid coordinates X=1,753,389.39m Y=5,440,524.28m) and extending in an easterly direction following the southern kerb line for 5 metres.</i>
<b>Court Road</b>	<i>No Stopping At All Times</i>	<i>North western side, commencing 133 metres from its intersection with Tawa Terrace (Grid coordinates X=1,753,374.02m Y=5,440,565.08m) and extending in an northerly direction following the western kerb line for 38 metres.</i>

**Prepared By:** Kate Gourdie **(Transport Engineer Assistant)**

**Approved By:** Zackary Moodie **(Team Leader Transport Engineering)**

**Date:** 17/02/2022

---

## FORWARD PROGRAMME

---

### Kōrero taunaki Summary of considerations

#### Purpose

1. This report to Tawa Community Board with a draft work programme for its amendment and approval.

#### Strategic alignment with community wellbeing outcomes and priority areas

Aligns with the following strategies and priority areas:

- |  |  |
|--|--|
| <b>Strategic alignment with priority objective areas from Long-term Plan 2021–2031</b> | <input type="checkbox"/> Sustainable, natural eco city   |
|  | <input checked="" type="checkbox"/> People friendly, compact, safe and accessible capital city |
|  | <input type="checkbox"/> Innovative, inclusive and creative city                               |
|  | <input type="checkbox"/> Dynamic and sustainable economy                                       |
|  | <input type="checkbox"/> Functioning, resilient and reliable three waters infrastructure       |
|  | <input type="checkbox"/> Affordable, resilient and safe place to live                          |
|  | <input type="checkbox"/> Safe, resilient and reliable core transport infrastructure network    |
|  | <input checked="" type="checkbox"/> Fit-for-purpose community, creative and cultural spaces    |
|  | <input type="checkbox"/> Accelerating zero-carbon and waste-free transition                    |
|  | <input type="checkbox"/> Strong partnerships with mana whenua                                  |

#### Relevant Previous decisions

Outline relevant previous decisions that pertain to the material being considered in this paper.

#### Financial considerations

- |   |  |   |
|---|--|---|
| <input checked="" type="checkbox"/> Nil | <input type="checkbox"/> Budgetary provision in Annual Plan / Long-term Plan | <input type="checkbox"/> Unbudgeted \$X |
|---|--|---|

#### Risk

- |   |                                 |                               |                                  |
|---|---------------------------------|-------------------------------|----------------------------------|
| <input checked="" type="checkbox"/> Low | <input type="checkbox"/> Medium | <input type="checkbox"/> High | <input type="checkbox"/> Extreme |
|---|---------------------------------|-------------------------------|----------------------------------|

Author	Alisi Puloka, Democracy Advisor
Authoriser	Sean Johnson, Democracy Team Leader

## Taunakitanga Officers' Recommendations

Officers recommend the following motion

That the Tawa Community Board:

1. Receive the information.
2. Approve its current draft work programme subject to any alterations, additions or deletions deemed necessary.

## Whakarāpopoto

### Executive Summary

April 2022
<p><b>Oral Reports:</b></p> <ul style="list-style-type: none"><li>• Police Update (tbc)</li><li>• Friends of Tawa Bush Reserve (tbc)</li><li>• Linden Community Development</li><li>• Kahui Ako (tbc)</li><li>• Lux mapping update (tbc)</li><li>• Tawa Members Update (standing item)</li></ul> <p><b>Written Reports:</b></p> <ul style="list-style-type: none"><li>• Parks, Sport and Recreation Report (quarterly)</li><li>• Resource Consent Applications and Approvals Report (standing item)</li><li>• Upcoming Areas of Consultation, Engagement or Surveys (if any) (standing item)</li><li>• Tawa Community Board Discretionary Fund Update (standing item)</li></ul>
May 2022
<p><b>Oral Reports:</b></p> <ul style="list-style-type: none"><li>• Fire Update (tbc)</li><li>• Update from the CE</li><li>• Update from the Mayor</li><li>• Tawa Members Update (standing item)</li></ul> <p><b>Written Reports:</b></p> <ul style="list-style-type: none"><li>• Resource Consent Applications and Approvals Report (standing item)</li><li>• Upcoming Areas of Consultation, Engagement or Surveys (if any) (standing item)</li><li>• Tawa Community Board Discretionary Fund Update (standing item)</li><li>• Forward Programme (standing item)</li></ul>
June 2022
<p><b>Oral Reports:</b></p> <ul style="list-style-type: none"><li>• Fire Update (tbc)</li><li>• Tawa Residents Association (tbc)</li><li>• Youth Council (tbc)</li><li>• Tawa Members Update (standing item)</li></ul>



**Written Reports:**

- Libraries Report (quarterly)
- Resource Consent Applications and Approvals Report (standing item)
- Upcoming Areas of Consultation, Engagement or Surveys (if any) (standing item)
- Tawa Community Board Discretionary Fund Update (standing item)
- Forward Programme (standing item)

**Attachments**

Nil