
ORDINARY MEETING

OF

TAWA COMMUNITY BOARD

MINUTE ITEM ATTACHMENTS

Time: 7.00pm
Date: Thursday, 8 September 2016
Venue: Tawa Community Centre
5 Cambridge Street
Tawa
Wellington

Business

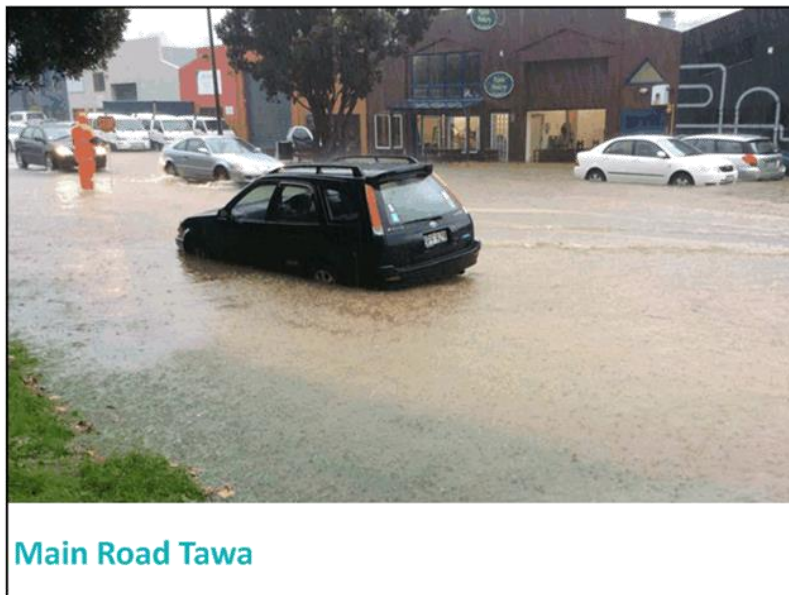
Page No.

3.1 Tawa Flood Modelling

1. Attachment A - Presentation by Wellington Water

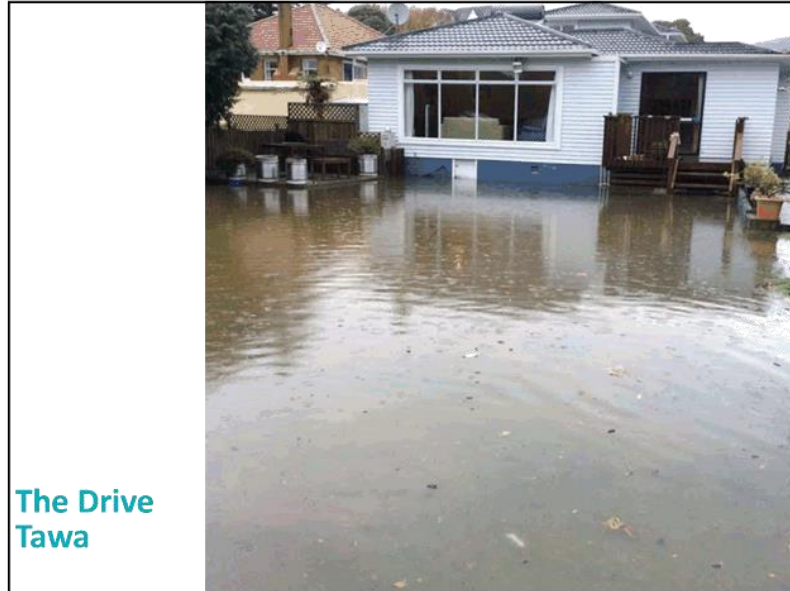
2

Item 3.1 Attachment 1



9/19/2016

Item 3.1 Attachment 1

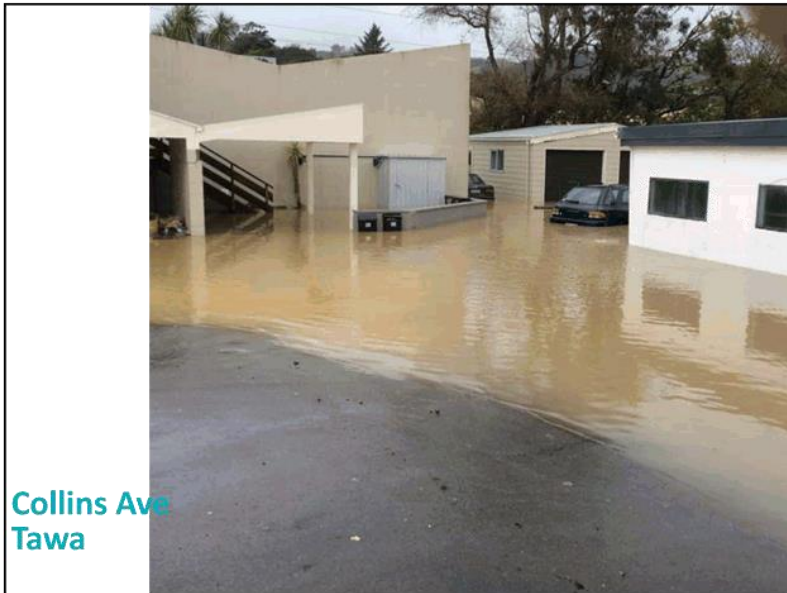


9/19/2016

Item 3.1 Attachment 1



Tawa School



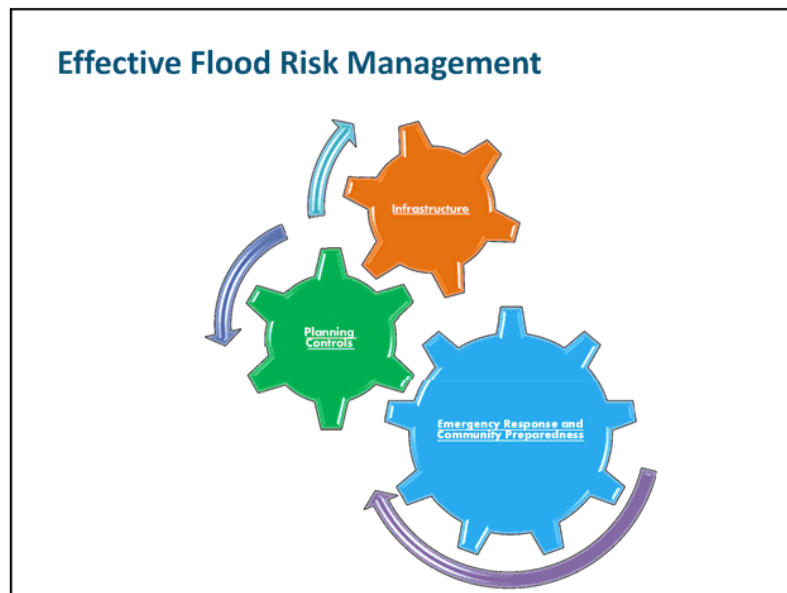
Collins Ave
Tawa

9/19/2016

3 Waters Service Goals

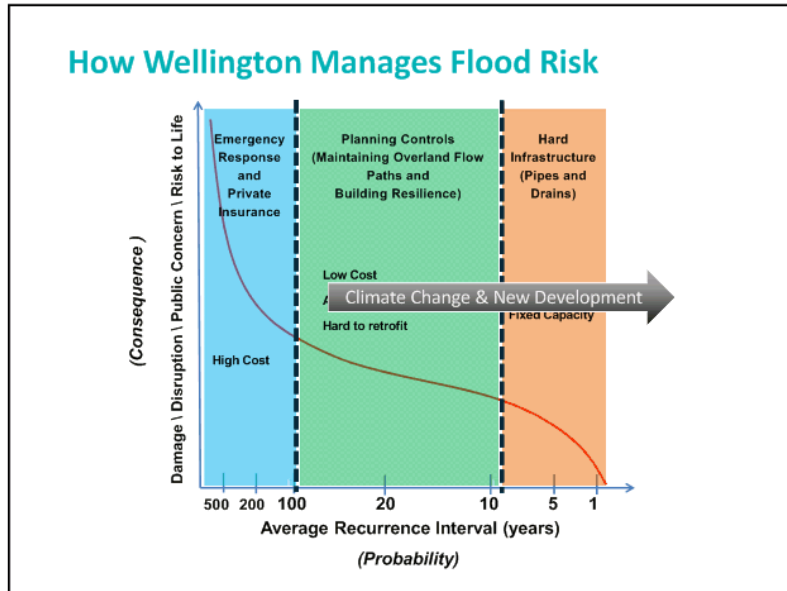


Safe and healthy water	Respectful of the environment	Resilient networks support the economy
<ul style="list-style-type: none"> We provide safe and healthy drinking water 	<ul style="list-style-type: none"> We manage the use of resources in a sustainable way 	<ul style="list-style-type: none"> We minimise the impact of flooding on people's lives and proactively plan for the impacts of climate change
<ul style="list-style-type: none"> We operate and manage assets that are safe for our suppliers, people and customers 	<ul style="list-style-type: none"> We will enhance the health of our waterways and the ocean 	<ul style="list-style-type: none"> We provide three water networks that are resilient to shocks and stresses
<ul style="list-style-type: none"> We provide an appropriate region-wide fire-fighting water supply to maintain public safety 	<ul style="list-style-type: none"> We influence people's behaviour so they are respectful of the environment 	<ul style="list-style-type: none"> We plan for sustainable water sources and future demand
<ul style="list-style-type: none"> We minimise public health risks associated with wastewater and stormwater 	<ul style="list-style-type: none"> We enhance the impact on the natural and built environment of water services 	<ul style="list-style-type: none"> We provide reliable services to customers




9/19/2016

Item 3.1 Attachment 1



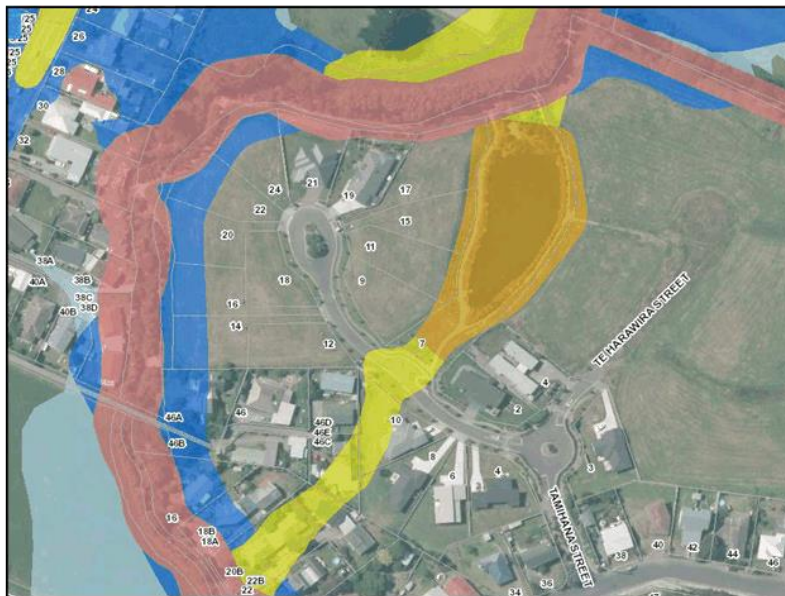
Maps



- Public Information and Emergency Response
- Options selection and Design
- Planning Controls

Our water, our future.

9/19/2016



Engagement Objectives



- Tap into the wider communities knowledge which can help refine the models to better represent the catchment
- Build trust in the science underpinning the models
- Empower the community to prepare for flooding

Our water, our future.