
ORDINARY MEETING

OF

TRANSPORT AND URBAN DEVELOPMENT COMMITTEE

MINUTE ITEM ATTACHMENTS

Time: 9:15 am
Date: Wednesday, 9 December 2015
Venue: Committee Room 1
Ground Floor, Council Offices
101 Wakefield Street
Wellington

Business

Page No.

2.4 Parking Sensors Update - Oral Briefing

1. Attachment A - Parking Sensors Presentation

2

14/12/2015

Wellington City Council
Transport and Urban Development
Parking Sensor update

9 December 2015

Author: Philip Simpson

Absolutely Positively
Wellington City Council
Me Heke Ki Pōneke

Parking Sensor Background

- Approved funding in 2014/15 for trial of Parking Sensors
- LTP Funding included in 2015/16 of \$1.4 M (no further decisions required by Council)

Absolutely Positively
Wellington City Council
Me Heke Ki Pōneke

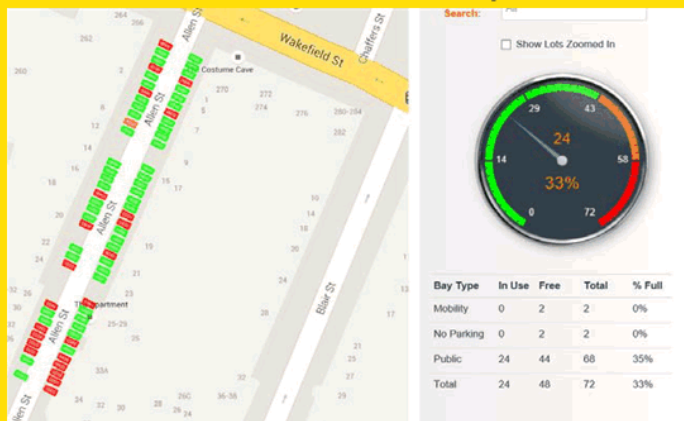
14/12/2015

Parking Sensor Trial

- Two types of sensor installed to Blair and Allen
- Customers do adapt to entering the 'space number' first.
- Can 'keep walking' as they do not have to return to car to display ticket
- Trial has established the feasibility of the technology – connectivity, system settings etc.
- Main customer issue: re-use of pay & display ticket

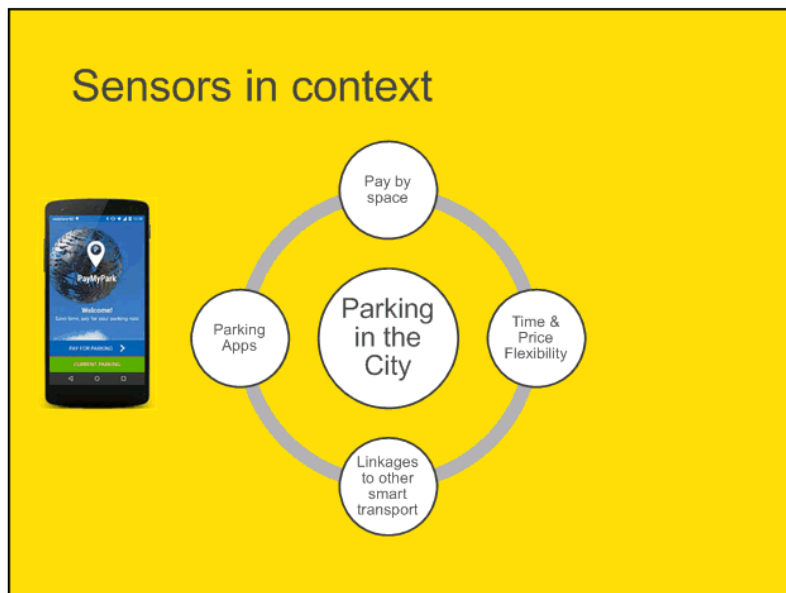
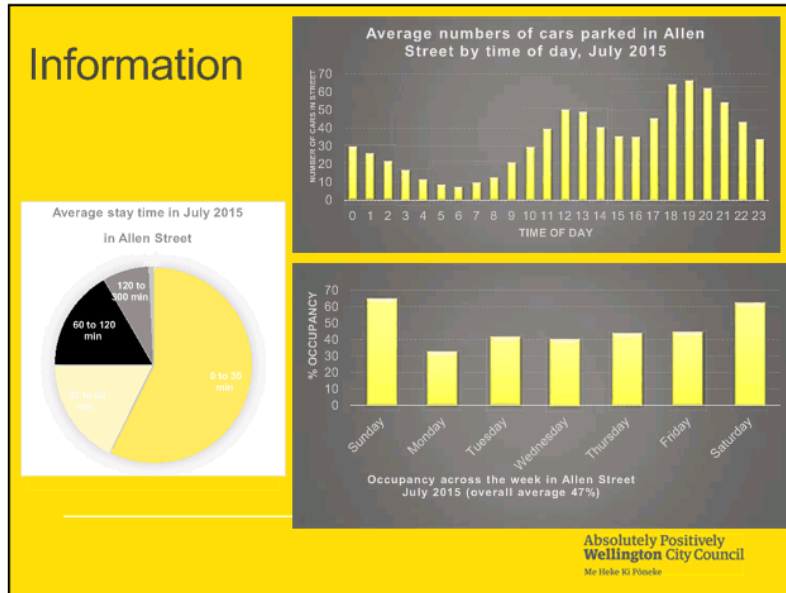
Absolutely Positively
Wellington City Council
Me Heke Ki Pōneke

Instant Information for Operations



Absolutely Positively
Wellington City Council
Me Heke Ki Pōneke

14/12/2015



14/12/2015

Desired Outcomes

Customer	Transport	Compliance	Enforcement
<ul style="list-style-type: none"> • Find parks • Pay and walk • Top-up and control • Mobility parking assurance 	<ul style="list-style-type: none"> • Less congestion • Less CO₂ • Improved asset management • Informed policy 	<ul style="list-style-type: none"> • More payment • Fewer pay machines • Lower printing, cash costs • Streamline channels (trade coupons etc.) 	<ul style="list-style-type: none"> • More effective • No chalk • Improved management of clearways and illegal parking

Absolutely Positively
Wellington City Council
 Me Heke Ki Pōneke

Toolsets

Parking App	Sensors	Policy	Channel Alignment
<ul style="list-style-type: none"> • Find a park • Payment & top-up • Reduced transaction costs 	<ul style="list-style-type: none"> • Provide information • Support pay and walk and parking app • Enable effective enforcement 	<ul style="list-style-type: none"> • Customer benefit from better parking policies • Better allocation of parking to support customer and transport objectives 	<ul style="list-style-type: none"> • Parking App reduces cash management • Alternative for coupon and trade products

Absolutely Positively
Wellington City Council
 Me Heke Ki Pōneke

14/12/2015

Item 2.4 Attachment 1

Indicative timeframe

- Promotion of App-based payment from February 2016
- Physical roll-out from March 2016
- 'Switch-on' of pay-by-space from June 2016

Absolutely Positively
Wellington City Council
Me Heke Ki Pōneke