



Presentation to Wellington City Council

June 20 2013

The Voice of
Hospitality



WELLINGTON LAP



Wellington Hospitality



- Wellington Hospitality – an industry proud to be a major contributor to the city and its vibrancy
- Police, Council, Health all agree - bars in Wellington are well run and well managed
- Medical Officer of Health agrees – the problem is pre-loading
- Bars do not create problems – vast majority of on-licensees are professional and experienced with exemplary records
- Hospitality & WCC have been successful in creating a vibrant event and entertainment city.
- Liquor sales - 75% off-premise 25% on-premise.
- 55% of on-licensed premises in Wellington = restaurants or cafes

*The Voice of
Hospitality*



If Council goes ahead with Draft LAP in existing form:

- *Minimum* \$41,000,000.00 revenue lost to the city
- \$11,500,000.00 wages lost to city
- 400 jobs lost
- Businesses will close

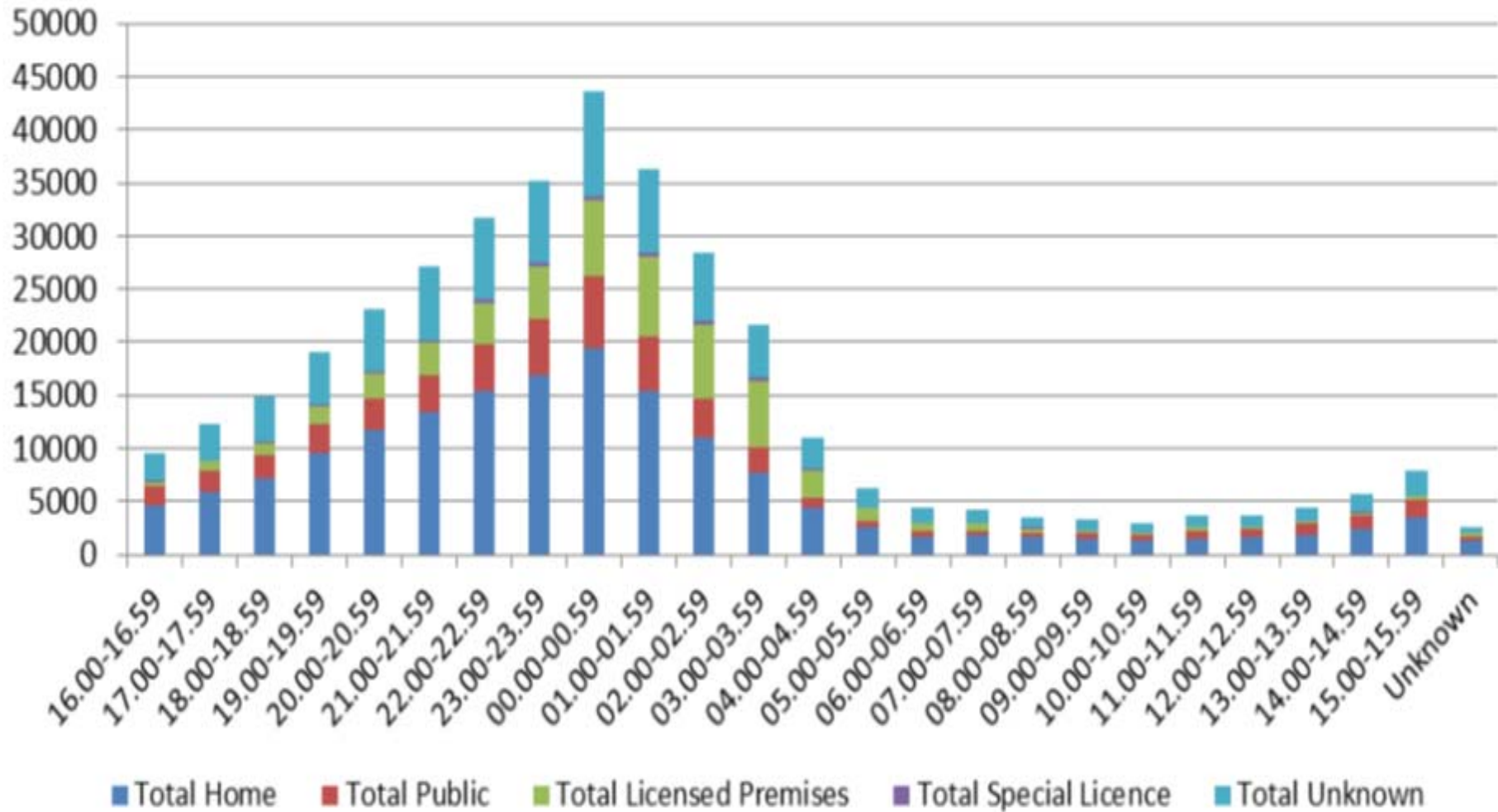
The Voice of
Hospitality



- Police statistics? Where is the data for Wellington? We do not know when or where the issues are
- If there have been major issues in Wellington why not alerted before now?
- Per Appendix 5 Police information shows
- Ministry of Justice figures show 45% of alcohol related offending is related to home drinking ...15% to bars
- Changing hours operation will not change amount of alcohol drunk – will move it elsewhere



Time Profile of all alcohol related offences (2009 – 2012)



City

- Why have 2am / 3am split for city bars? Bureaucratic with no rationale.
- Hutt is proposing 3am.

Precincts

- arbitrary - random lines drawn
- a city should be dynamic and grow and develop organically
- will affect development and investment
- Te Aro Park black hole - safety

*The Voice of
Hospitality*



- Bars are well run – no disagreement. Operators are professionals who know what they are doing
- Why have extraordinary onerous list of random discretionary and compulsory conditions over and above existing? eg
 - Limit the number of drinks sold in a transaction - number set by Council
 - Minimum numbers of security - set by Council
 - Compulsory Observation Zone - set by Council
 - Compulsory High Viz vests
 - Compulsory Wind Down hour
 - Lights turned up - compulsory at x time set by Council
 - One way doors
 - Compulsory incident register - ready to be inspected any time
 - Dedicated queue managers



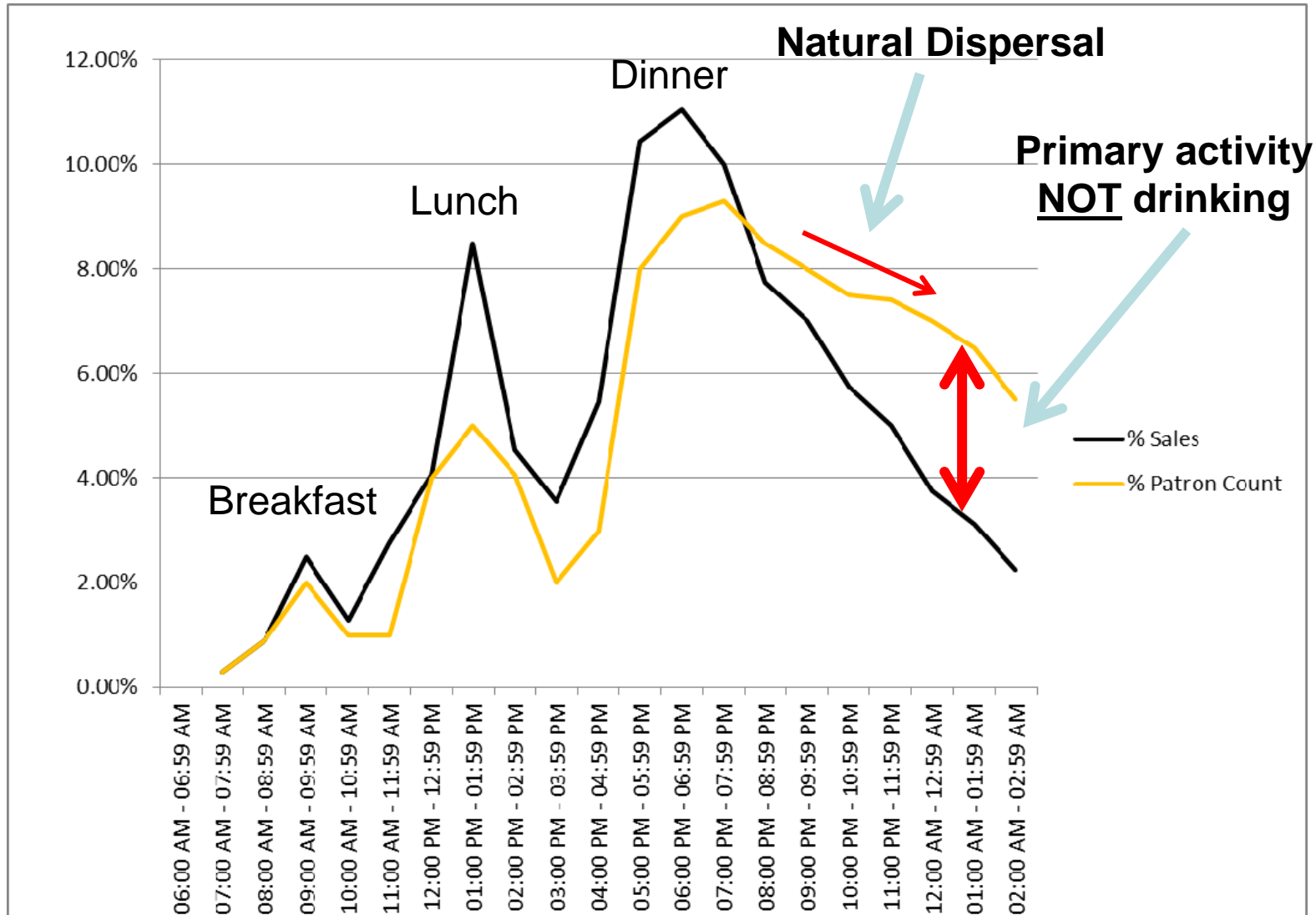
- Already greater restrictions under the SASAA 2012
- Wind down hour = default earlier closing
 - our graphs show natural wind down exists already
 - drink up time exists already
- Missing the point about Entertainment – it *is* provided currently
Bar club owners pay for it - not patrons



3 AM -CBD Premises Average Sales vs. Patron Percentages (FUNCTIONS & EVENTS ONLY)

30th/40th Birthdays, Weddings/Engagement Parties, Corporate functions,
(Note: Similar for Major Sports. AFL, All Blacks, Sevens, Concerts etc)

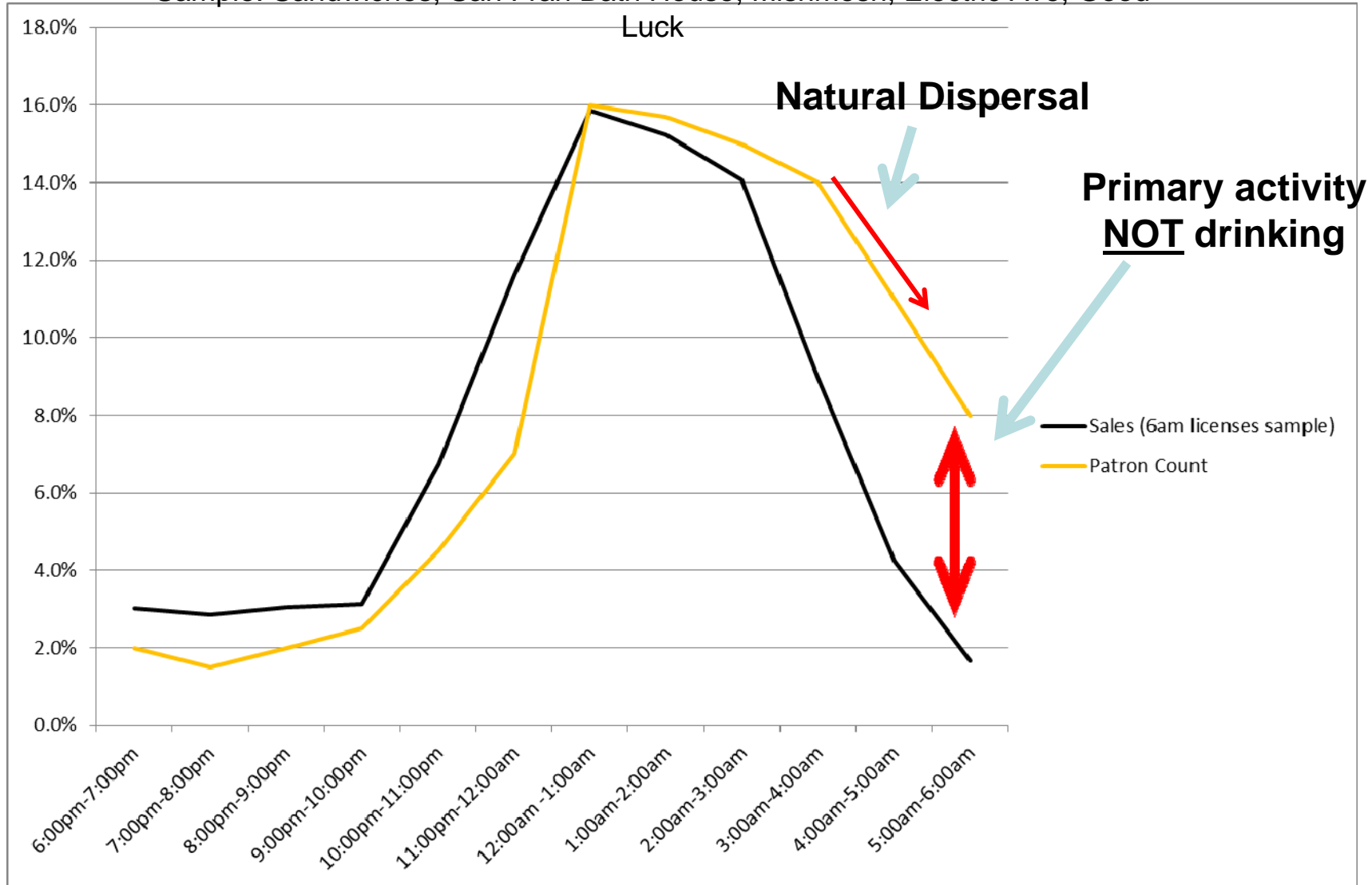
Sample: Cambridge Hotel, Green Man, Old Bailey, Concrete, The Pub,



6AM Premises – Average Sales vs. Patron Count Percentages

Normal Friday/Saturday

Sample: Sandwiches, San Fran Bath House, Mishmosh, Electric Ave, Good



Alternatives

- Capital Host working with Council and Police to create a better and safer city
- Transport, lighting, road closures
- Innovative Strategies - Mellow Yellow, Operation Bolt
- 200 security staff in entertainment precinct Friday and Saturday nights
- Police enforcement of liquor bans

*The Voice of
Hospitality*

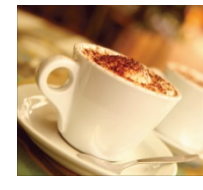
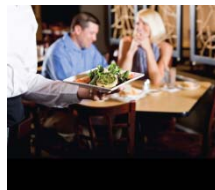


Courtenay place 3am-6am



**We are part of the
solution
Not the problem**

*The Voice of
Hospitality*



Sources

- Research New Zealand Survey - 1189 participants
- Research Fact v Fiction Document – SenateSHJ
- Graphs and data
- Thousands of years of combined experience from operators in the city

ARE WE BEING LISTENED TO?

*The Voice of
Hospitality*

