
PROPOSED TEMPORARY ROAD CLOSURE – IMPACT REPORT

NEWTOWN FAIR SUNDAY 3 MARCH 2013

1. Description of Event

The annual festival and fair is a successful community event attracting very large crowds. The event in 2013 will see the fair celebrating its seventeenth year.

The proposed road closures, to vehicular traffic only, are for Sunday 3 March 2013, from 6am to 8pm on the following roads;

- **Riddiford Street** (between Mein Street and a point just south of Donald McLean Street)
- **Rintoul Street** (between Riddiford Street and Colombo Street)
- **Constable Street** (between Riddiford Street and Daniell Street)
- **Emmett Street** (all of Emmett Street closed)
- **Green Street** (all of Green Street closed)
- **Wilson Street** (closed for approximately 80 metres east off Riddiford Street and the public carpark – note: the Wilson Street closure extends to 9.30pm to facilitate the removal of fair infrastructure)
- **Newtown Avenue** (closed for approximately 80m east off Riddiford Street)
- **Normanby Street** (closed for approximately 80m east off Riddiford Street)
- **Donald McLean Street** (closed for approximately 80m east off Riddiford Street).

As part of the contingency for wet weather, the community space in the following street will be used for performances and other fair activities. It will require an additional closure to safely manage the increase flow of pedestrians in this area.

- **Colombo Street** (closed for approximately 30 metres west from its intersection with Rintoul Street)

Parking restrictions are proposed on the above and some surrounding streets. A one-way system for eastern and some southern bus services will operate on Daniell Street and Owen Street via Mein Street, which remains two-way at all times. Buses to and from Island Bay will be diverted to the number 4 route which runs via Adelaide Road. The traffic diversion, emergency procedures and the fair footprint is an established protocol that Council officers, the local community, emergency services and the Traffic Management Company have collectively reviewed and improved each year.

Road closure notification signs will be in place at least one week prior to the event, as well as electronic variable message boards on the event day. Residents and local businesses will receive a letter drop advising them of the event, the road closures and the parking restrictions. The event is also extensively advertised by posters in local shops, a variety of other media and an advertisement in Our Wellington Page of the Dominion Post in the week preceding the fair. The event is to be traffic managed by a qualified traffic management company and emergency services will have immediate access to the area if required. Public transport operators have been notified and consulted with concerning the road

closures. It is proposed that the pre-determined temporary bus stops and detour routes can be in place.

2. Events (Business Development) Support

The Newtown Festival is a long running community event and is regarded as the most successful festival of its type in the city. Wellington City Council provides support for the event through a community Festivals Grant and additional funding from the Events Business Unit.

3. Proposal Notice and Consultation

The public notice that the Council is proposing to consider this closure was published in the following newspaper:

- Dominion Post Saturday 6 October 2012

The New Zealand Police and the Ministry of Transport have also been consulted with.

4. Objections

There have been NO objections to this closure request.

5. Traffic Impact Assessment

Prior Closures

None of the proposed closures for this event will result in a road being closed for an aggregate of more than 31 days in any year.

Traffic Impact

In the opinion of Soon Teck Kong, Manager Transport Network, acting as the Council's Traffic Engineer, the proposed closure, if implemented according to the plans provided, will impede traffic flows on several major routes. The proposed conditions below will mitigate some of the expected traffic congestion during the road closures. The expected congestion during the road closures is part of facilitating a public event and ensuring safety for the general public. However, the Council reserves the right to modify this opinion at any time. If, in the opinion of the Council, the closure may or does impede traffic unreasonably, any approval granted by the Regulatory Processes Committee may be revoked and the event organiser may be required to open the road at the direction of a suitably qualified Council officer in charge of traffic.

Conditions:

- The event organiser is to publicly notify the event via letter drop, newspaper advertisement, advanced signage and media releases.

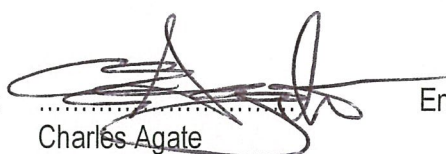
- The event organiser is to ensure that the emergency services (Police, Fire and Ambulance Services) have been consulted with and that the Traffic Management Plan includes all of their specific requirements.
- The event organiser is to ensure that the affected property owners and businesses along the road closures are consulted with and access options are arranged for affected parties.
- The event organiser is to provide marshals at all road closure ends to ensure that public safety (interaction of traffic and spectators) is not compromised (in particular the road closures at the ends of Riddiford Street, Constable Street and Rintoul Street).
- Detour routes are to be provided and clearly signed during the road closure period.
- The event organiser is to work with the public transport operators to provide alternative public transport routes and bus stops.
- The event organiser is to provide further details of the Traffic Management Plan to Council for approval prior to the event, including details of detour routes.
- The event organiser is to provide Variable Message Signs at major routes to advise drivers of the road closures, in particular routes between the CBD and the Airport and the Regional Hospital.

Signed 

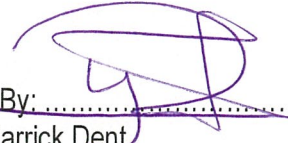
Soon Teck Kong
Manager - Transport Network

6. Attachments

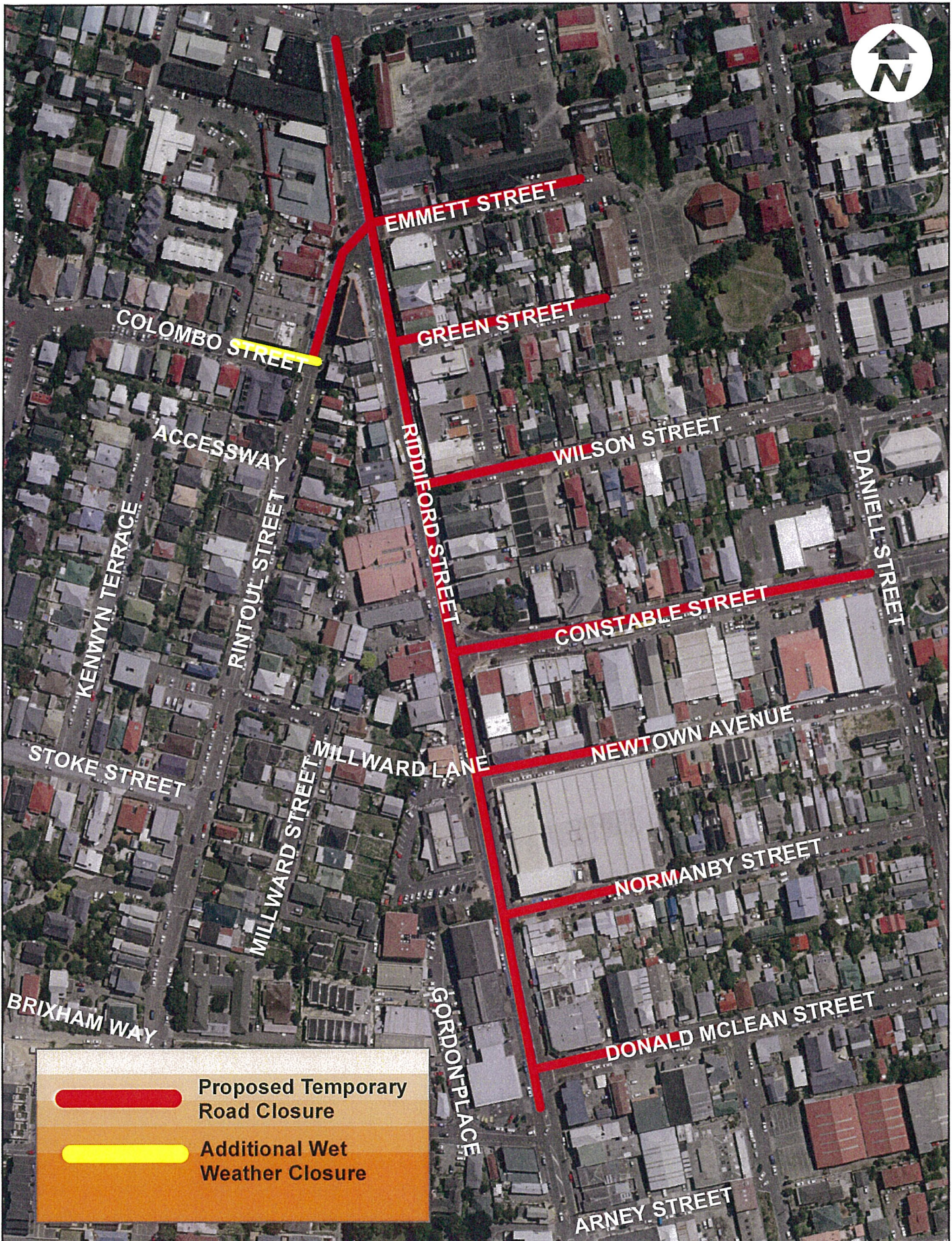
- Map of proposed closure
- Copy of proposal notice from the newspaper


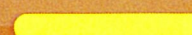
Prepared By: 

Charles Agate
Street Activities Coordinator

Endorsed By: 

Warrick Dent
Manager City Events



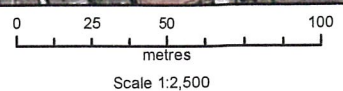
	Proposed Temporary Road Closure
	Additional Wet Weather Closure

Newtown Fair
 Road Closures - 6am to 8pm
 Sunday 3 March 2013

Property boundaries, 20m Contours, road names, rail line, address & title points sourced from Land Information NZ. Crown Copyright reserved. Property boundaries accuracy +/-1m in urban areas, +/-30m in rural areas. Census data sourced from Statistics NZ. Postcodes sourced from NZ Post. Assets, contours, water and drainage information shown is approximate and must not be used for detailed engineering design. Other data has been compiled from a variety of sources and its accuracy may vary, but is generally +/- 1m.

MAP PRODUCED BY:
 Wellington City Council
 101 Wakefield Street
 WELLINGTON, NZ

ORIGINAL MAP SIZE: A4
 AUTHOR: agate2c
 DATE: 5/11/2012
 REFERENCE:



PUBLIC NOTICES PUBLIC NOTICES PUBLIC NOTICES PUBLIC NOTICES PUBLIC NOTICES PUBLIC NOTICES PUBLIC NOTICES PUBLIC NOTICES



CAPITAL & COAST DISTRICT HEALTH BOARD MEETING

Notice is given that the following meeting of the Capital and Coast District Health Board will meet as follows:

Friday 12 October 2012
Capital & Coast District Health Board 9.00am

VENUE

Unless indicated otherwise the Board meeting will be held at:

Board Room, Level 11, Grace Neill Block, Capital & Coast District Health Board

PUBLIC HAVE YOUR SAY

Public participation is invited on any agenda item at the start of the Board meeting. Guidelines on speaking, public board papers, and a full schedule of meeting dates and venues are available at www.ccdhb.org.nz

PROPOSED MARITIME RULES

Comments are invited on the proposed Maritime Rule Part 82: Commercial Jet Boat Operations - River Amendment 2012 - Alcohol and other Drugs Requirements developed under the Maritime Transport Act 1994.

The draft rules can be found at www.maritimenz.govt.nz/consultation

Submissions - email, and by post - must be made by **19 October 2012**. Postal submissions must be addressed to the Rules Coordinator.

The draft rules are available free of charge from the following sources:

- on the Maritime New Zealand website: www.maritimenz.govt.nz/consultation
- contact the Rules Coordinator at rules.coordinator@maritimenz.govt.nz phone (04) 494 1273, fax (04) 494 8901
- by writing to PO Box 27006, Wellington 6141
- in person at Level 10, 1 Grey Street, Wellington.



WANTED - REKORANGI (Papers only)
Missions but take of Upper Hill, Retired, died 11/09/12

O'RILEY, Keith, Francis, late of Lower Hill, Retired, Employed, died 1/09/12

ROWLING, Helene, formerly of "Heddon", late of Napier, Widow, died 10/09/12

THOMPSON, Barbara, Grace, late of Upper Hill, Retired, died 14/07/12

TURNER, John David, late of Upper Hill, Retired School Teacher, died 08/09/12

WILLIAMS, Philippe, Ellen, formerly of Taharua Bay, but late of Johnsonville, Married - Woman, died 03/09/12

Wed 24 October Fri 19 Oct 12 noon
Classified Display Advertising

Mon 22 October Thur 18 Oct 12 noon
Tue 23 October Thur 18 Oct 2pm
Recruitment
Wed 24 October Thur 18 Oct 2pm

Non-Display Advertising

Mon 22 October Fri 19 Oct 2 pm
Tue 23 October Fri 19 Oct 2 pm
Recruitment
Wed 23 October Fri 19 Oct 2pm

*CCN publication deadlines come forward 24 hours

ADVERTISING TERMS & CONDITIONS

These conditions apply to all advertising in this publication unless we have agreed other terms in writing with the advertiser ('you').

- In accepting an advertisement for publication and in publishing it we are doing so in consideration of and relying on your express warranty, the truth of which is essential.
- That the advertisement does not contain anything that: (i) is misleading or deceptive or likely to mislead or deceive or which otherwise breaches the Fair Trading Act 1986; (ii) is defamatory or libellous or which otherwise offends against generally accepted community standards; (iii) infringes a copyright or trademark or otherwise infringes any intellectual or industrial property rights; (iv) breaches any provision of any statute, regulation by-law or other rule of law; and
- That the advertisement complies in every way with the Advertising Codes of Practice issued by the Advertising Standards Authority Inc (ASAA) and with every other code or industry standard relating to advertising in New Zealand; and
- Publication of the advertisement will not give rise to any liability on our part or in a claim being made against us.
- You agree to indemnify us against all losses or costs arising directly or indirectly from any breach of the warranties above and from any costs incurred in our making corrections or amendments in accordance with the terms that follow.
- By supplying or placing an advertisement for publication you grant us a perpetual, royalty free license to reproduce the advertisement in any print or electronic advertising media we or our advertisers now or in the future.
- Where you utilise any aspect of our creative services in the design or production of an advertisement (including photographic or design work) you acknowledge that you own the copyright in such work and that such work is not work for which a commissioning payment has been made or agreed.
- We may refuse to publish, or withdraw an advertisement from publication without having to give a reason.
- We may publish the advertisement on the next available day if there is an error, or delay in publication of the advertising, as booked.
- We may correct or amend advertising to conform to style or for other persuasive reason as long as we do so using reasonable care.
- All DVDs, Blu-ray disks and videos; and
- any other restricted publications advertised for sale must include its Classification as determined by the NZ Classification Office and may be advertised only in accordance with the conditions imposed by the Classification Office. We may require written evidence of New Zealand Classification ratings and Classification Office conditions for each DVD, video or any publication.
- We may take orders for advertising in specific spaces (space orders). The space may be used only for advertising of the advertiser's usual business and may not be transferred by you to another person.
- The guarantees contained in the Consumer Guarantees Act 1993 are excluded where you acquire goods and services from us for the purpose of a business.
- You must file us as soon as possible if there is an error or omission in any advertisement the advertiser has placed. We will not be liable for any indirect or consequential loss (which includes lost revenue or profit) from an error or omission or failure to publish and if we are found to have any direct liability for any circumstance that liability is limited to the cost of the space of the advertisement.
- To cancel an advertisement a cancellation number must be obtained from us at least three days prior to publication. Cancellations which occur inside of the three-day working period, may incur a 100% penalty.
- The charge for an advertisement will be in accordance with the published ratecard applying at the time for the publication, unless we agree otherwise in writing. Rates for space orders apply for the whole space and are not reduced if the whole space is not used. Rates confirmed in advertising volume agreements will be honoured over the period of that agreement if all other conditions of the agreement have been met by you.
- Advertising placed by advertisers who are not New Zealand residents will be zero-rated for GST purposes. GST will be applied at the standard rate to advertising placed by non-resident agents acting for New Zealand resident principals.
- If payment on a commercial account is not made by due date (which is the 20th of the month following invoice, unless we specify otherwise) you will be liable for interest at market rates and all costs of recovery, commissions and collection fees.
- All casual advertising must be prepaid prior to publication. Payment by credit card for casual advertising is accepted.
- We may provide packages to be received where you include internet addresses in advertisements.



PROPOSED ROAD CLOSURES

A meeting of the Regulatory Processes Committee is scheduled for 9.15am, Wednesday 14 November in the Te Mahanga Room (Committee Room 1), ground floor Council offices, 101 Wakefield Street to consider the following proposed temporary road closures for events in 2013:

- Island Bay Festival**
Street Parade - 12 noon - 3pm, Saturday 9 February
Avon Street between Clyde Street and The Parade - parade assembly only - no through traffic - resident access only
- Day in the Bay Festival - 6am - 6pm, Sunday 10 February**
Reef Street between The Esplanade and The Parade
The Esplanade between Derwent Street and Brighton Street
- Ribble Street Races - 9am - 4:30pm, Saturday 16 February**
All of Ribble Street closed

AMI Round the Bays Fun Run - Sunday 17 February

- Customhouse Quay southbound lanes from Whitmore to Jervois Quay from 6:30 - 11am
- Jervois Quay southbound lanes from Customhouse Quay to Cable Street from 6:30 - 11am
- Cable Street between Jervois Quay and Oriental Parade - right-hand lane open from Chaffers Street to Kent Terrace from 7 - 11am
- Oriental Parade from 7.45 - 11am
- Evans Bay Parade between Oriental Parade and Cobham Drive from 7.45am - 12 noon
- Evans Bay Parade between Cobham Drive and Kibimie Crescent from 8am - 1pm
- Wellington Road one way east between Crawford Road and Ruahine Street from 8 - 11:30am
- Shelly Bay Road from 8am - 12 noon
- Massey Road between Shelly Bay Road and approximately Point Gordon from 8am - 12 noon

Newtown Fair - 6am - 8pm, Sunday 3 March

- Riddiford Street between Main Street and a point south of Donald McLean Street
- Rintoul Street between Riddiford Street and Colombo Street
- Constable Street between Riddiford Street and Daniell Street
- Emmett Street
- Green Street
- Wilson Street for approximately 80 metres east off Riddiford Street - this closure extends to 9:30pm
- Newtown Avenue for approximately 80m east off Riddiford Street
- Normanby Street for approximately 80m east off Riddiford Street
- Donald McLean Street for approximately 50m east off Riddiford Street

In case of wet weather, the following street will be closed to ease pedestrian access to event spaces:

- Colombo Street for approximately 30 metres west from its intersection with Rintoul Street

Any person objecting to a proposed road closure must contact Wellington City Council in writing before 5pm Friday 19 October 2012.

Please send correspondence to Charles Agate at the mailing address below, by email to charles.agate@wcc.govt.nz or by fax to 801 3009.

Wellington City Council, 101 Wakefield Street, PO Box 2199, Wellington 6140 | Wellington.govt.nz