
PROPOSED TEMPORARY ROAD CLOSURE – IMPACT REPORT

ISLAND BAY FESTIVAL SATURDAY 9 & 16 AND SUNDAY 10 FEBRUARY 2013

1. Description of Event

The Island Bay Enhancement Trust has successfully produced festival events in Island Bay for over 26 years. The festival programme is planned to span seven days, with the three major events in the programme being the Festival Parade, the 'Day in the Bay' street festival and the Ribble Street Races.

The proposed road closures, to vehicles only, are as follows;

- **Street Parade** - Saturday 9 February 2013, from 12noon to 3pm
Avon Street (between Clyde Street and The Parade – parade assembly only – no through traffic – resident access only)
This will be carried out on an open road under a temporary traffic management plan which will be administered by a qualified traffic management company.
- **Day in the Bay Festival** - Sunday 10 February 2013, from 6am to 6pm
Reef Street (between The Esplanade and The Parade)
The Esplanade (between Derwent Street and Brighton Street)
This event centres activities on Island Bay beach and it is planned to hold concerts and other events in the adjacent Shorland Park. It is also planned to have family friendly activities and food and craft stalls on the proposed closed roads.
- **Ribble Street Races** - Saturday 16 February 2013, from 9.00am to 4.30pm
Ribble Street (all of Ribble Street)
This is a trolley derby involving a series of races based on age groups, gender, and types of trolleys, hill and flat races. This event is an iconic Island Bay event that has been successfully run in previous years, with great community support and participation. The organisers will provide a detailed safety and site plan, there will be no parking in the street and participants will be supervised at all times.

The Trust will engage a qualified traffic management company to safely manage the road closures. Road closure notification signs will be placed at each end of the closures, at least one week prior to the events. Residents and local businesses will receive a letter drop advising them of the events and the proposed road closures. The event is also to be advertised by a website, business premise posters, school and church networks and an advertisement in Our Wellington Page of the Dominion Post in the week preceding the derby, parade and festival.

Pedestrian access will not be restricted and emergency services will have immediate access to the area if required. Public transport operators have been notified of the proposal.

2. Events (Business Development) Support

The Events Business Unit has no connection with, and no objection to, this event.

3. Proposal Notice and Consultation

The public notice that the Council is proposing to consider this closure was published in the following newspaper:

- Dominion Post Saturday 6 October 2012

The New Zealand Police and the Ministry of Transport have also been consulted with.

4. Objections

There have been NO objections to this closure request.

5. Traffic Impact Assessment

Prior Closures

None of the proposed closures for this event will result in a road being closed for an aggregate of more than 31 days in any year.

Traffic Impact

In the opinion of Soon Teck Kong, Manager Transport Network, acting as the Council's Traffic Engineer, the proposed closure, if implemented according to the plans provided, is not likely to impede traffic unreasonably subject to the conditions below. However, the Council reserves the right to modify this opinion at any time. If, in the opinion of the Council, the closure may or does impede traffic unreasonably, any approval granted by the Regulatory Processes Committee may be revoked and the event organiser may be required to open the road at the direction of a suitably qualified Council officer in charge of traffic.

Conditions:

- The event organiser is to publicly notify the event via letter drop, local newspaper advertisement, advanced signage and media releases.
- The event organiser is to ensure that the emergency services (Police, Fire and Ambulance Services) have been consulted with and that the Traffic Management Plan includes all of their specific requirements.
- The event organiser is to ensure that the affected property owners along the road closures are consulted with (in particular Ribble Street, Reef Street and The Esplanade).

- The event organiser is to provide marshals at the road closure ends to ensure that public safety (interaction of traffic and spectators) is not compromised.
- A detour route is to be provided and clearly signed during the road closures – in particular The Esplanade.
- The event organiser is to provide further details of the Traffic Management Plan to Council for approval prior to the event.

Signed 

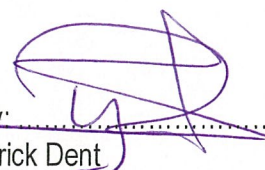
Soon Teck Kong
Manager - Transport Network

6. Attachments

- Map of proposed closure
- Copy of proposal notice from the newspaper


Prepared By: 

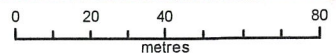
Charles Agate
Street Activities Coordinator

Endorsed By: 

Warrick Dent
Manager City Events



 **Proposed Temporary Road Closure**



Scale 1:2,000

Island Bay Festival - 'Day in the Bay'

Road Closures - 6am to 6pm

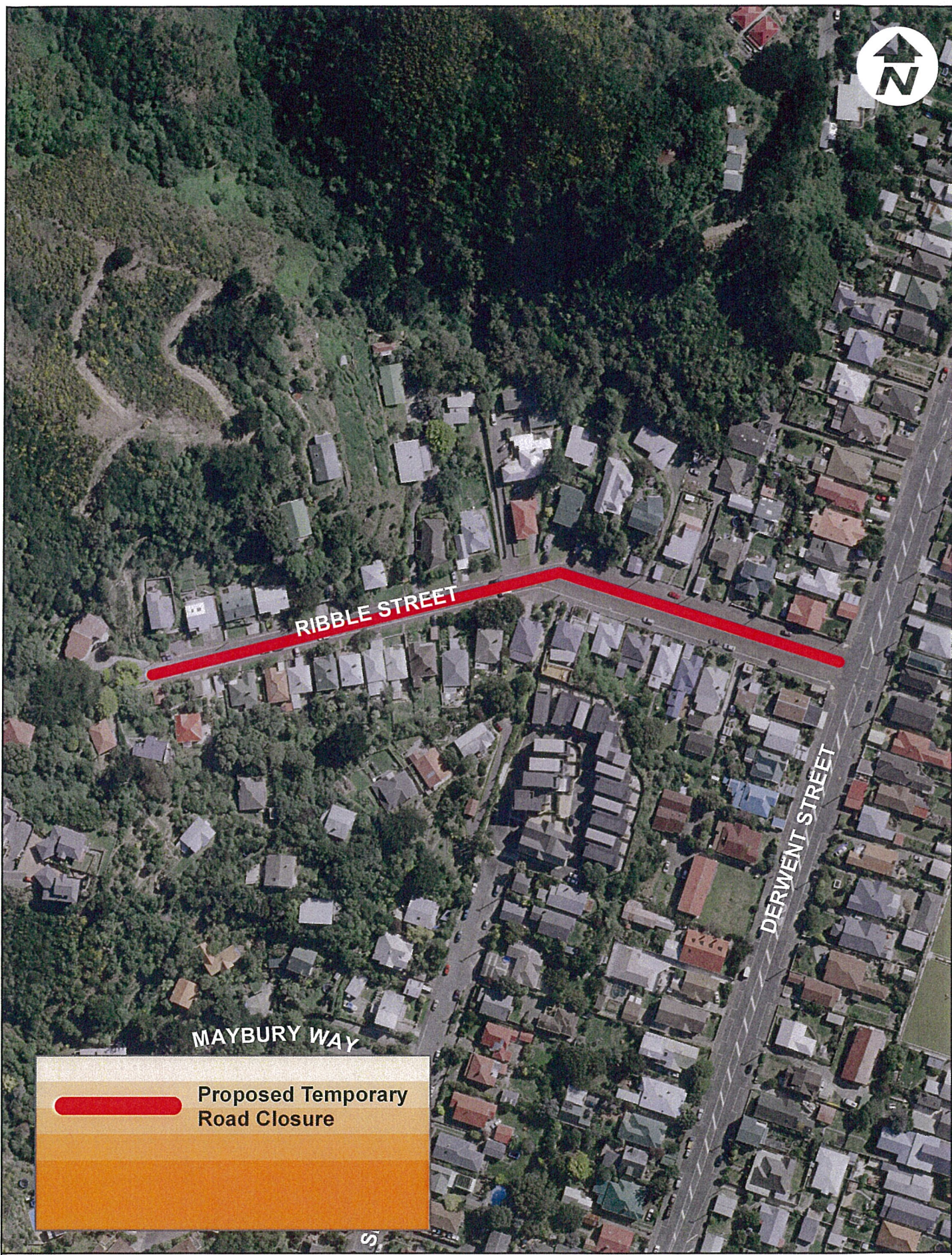
Sunday 10 February 2013

Property boundaries, 20m Contours, road names, rail line, address & title points sourced from Land Information NZ. Crown Copyright reserved. Property boundaries accuracy +/-1m in urban areas, +/-30m in rural areas. Census data sourced from Statistics NZ. Postcodes sourced from NZ Post. Assets, contours, water and drainage information shown is approximate and must not be used for detailed engineering design. Other data has been compiled from a variety of sources and its accuracy may vary, but is generally +/- 1m.

MAP PRODUCED BY:
Wellington City Council
101 Wakefield Street
WELLINGTON, NZ

ORIGINAL MAP SIZE: A4
AUTHOR: agate2c
DATE: 5/11/2012
REFERENCE:



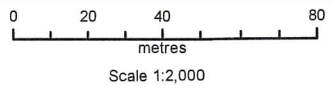


Filepath: \\Road And Traffic Management\5-Services\673 Temporary Road Closures\2013 Events\673-TTC-201302 Island Bay Festival\5-73-TTC-201302A Ribble Street Races\Road Closure Aerial.mxd

Proposed Temporary Road Closure

Island Bay Festival - Ribble Street Races
 Road Closures - 9am to 4.30pm
 Saturday 16 February 2013

Property boundaries, 20m Contours, road names, rail line, address & title points sourced from Land Information NZ. Crown Copyright reserved. Property boundaries accuracy +/-1m in urban areas, +/-30m in rural areas. Census data sourced from Statistics NZ. Postcodes sourced from NZ Post. Assets, contours, water and drainage information shown is approximate and must not be used for detailed engineering design. Other data has been compiled from a variety of sources and its accuracy may vary, but is generally +/- 1m.



MAP PRODUCED BY:
 Wellington City Council
 101 Wakefield Street
 WELLINGTON, NZ

ORIGINAL MAP SIZE: A4
 AUTHOR: agate2c
 DATE: 5/11/2012
 REFERENCE:



PUBLIC NOTICES

PUBLIC NOTICES

PUBLIC NOTICES

PUBLIC NOTICES

PUBLIC NOTICES

PUBLIC NOTICES

PUBLIC NOTICES

PUBLIC NOTICES

Capital & Coast District Health Board
 Waiapu, Hawke Bay

CAPITAL & COAST DISTRICT HEALTH BOARD MEETING

Notice is given that the following meeting of the Capital and Coast District Health Board will meet as follows:

Friday 12 October 2012
 Capital & Coast District Health Board 9.00am

VENUE

Unless indicated otherwise the Board meeting will be held at:
Board Room, Level 11, Grace Neill Block, Capital & Coast District Health Board

PUBLIC HAVE YOUR SAY

Public participation is invited on any agenda item at the start of the Board meeting. Guidelines on speaking, public board papers and a full schedule of meeting dates and venues are available at www.ccdhb.org.nz

PROPOSED MARITIME RULES

Comments are invited on the proposed Maritime Rule Part 82: Commercial Jet Boat Operations – River Amendment 2012 – Alcohol and other Drugs. Requirements developed under the Maritime Transport Act 1994.

The draft rules can be found at www.maritimenz.govt.nz/consultation

Submissions – email, and by post – must be made by 19 October 2012. Postal submissions must be addressed to the Rules Coordinator.

- The draft rules are available free of charge from the following sources:
- on the Maritime New Zealand website www.maritimenz.govt.nz/consultation
 - contact the Rules Coordinator at rules_coordinator@maritimenz.govt.nz phone (04) 494 1273, fax (04) 494 8901
 - by writing to PO Box 27006, Wellington 6141
 - in person at Level 10, 1 Grey Street, Wellington



WANTED: REKORANGI (Police) - Missing: M41 case of Upper Hutia Road, died 11/05/12

ORLEY Kelly, Frank, late of Lower Hutia, Self Employed, died 14/09/12

ROWLING Helen, formerly of Hastings, but late of Napier, Widow, died 10/09/12

THOMPSON Barbara Grace, late of Upper Hutia, Retired, died 14/07/12

TURNER John David, late of Upper Hutia, Retired School Teacher, died 05/09/12

WILLIAMS Philippa Ellen, formerly of Titahi Bay, but late of Johnsons Bay, Married, Widow, died 03/09/98

Classified Display Advertising

Mon 22 October Thur 18 Oct 12 noon
 Tue 23 October Thur 18 Oct 2pm

Recruitment:
 Wed 24 October Thur 18 Oct 2pm

Non Display Advertising

Mon 22 October Fri 19 Oct 2 pm
 Tue 23 October Fri 19 Oct 2 pm

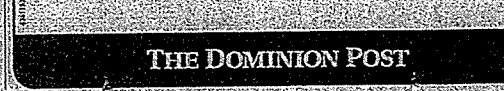
Recruitment:
 Wed 23 October Fri 19 Oct 2pm

***CCN publication deadlines come forward 24 hours**

ADVERTISING TERMS & CONDITIONS

These conditions apply to all advertising in this publication unless we have agreed other terms in writing with the advertiser ("you").

- In accepting an advertisement for publication and in publishing it we are doing so in consideration of and relying on your express warranty, the truth of which is essential.
 - That the advertisement does not contain anything that: (i) is misleading or deceptive or likely to mislead or deceive or which otherwise breaches the Fair Trading Act 1986; (ii) is defamatory or infringes or which otherwise offends against generally accepted community standards; (iii) infringes a copyright or trademark or breaches any intellectual or industrial property rights; (iv) breaches any provision of any statute, regulation, by-law or other rule of law; and
 - That the advertisement complies in every way with the Advertising Codes of Practice issued by the Advertising Standards Authority Inc. (ASA) and with every other code or industry standard relating to advertising in New Zealand; and
 - Publication of the advertisement will not give rise to any liability on our part or in a claim being made against us.
- You agree to indemnify us against all losses or costs arising directly or indirectly from any breach of the warranties above and from any costs incurred to our making corrections or amendments in accordance with the terms that follow.
- By supplying or placing an advertisement for publication you grant us a perpetual, royalty free license to reproduce the advertisement in any print or electronic advertising media we offer advertisers now or in the future.
- Where you utilise any aspect of our creative services in the design or production of an advertisement (including photographs or design work) you acknowledges that we own the copyright in such work and that such work is not work for which a commissioning payment has been made or agreed.
- We may refuse to publish or withdraw an advertisement from publication without having to give a reason.
- We may publish the advertisement on the next available day if there is an error or delay in publication of the advertising as booked.
- We may correct or amend advertising to conform to style or for other technical reasons or so long as we do so using reasonable care.
- All DVDs, Blu-ray disks and videos, and any other restricted publications advertised for sale must comply for Classification determined by the NZ Classification Office and may be advertised only in accordance with the conditions imposed by the Classification Office. We may require written evidence of New Zealand Classification ratings and Classification Office conditions for each DVD, video or any publication.
- We may take orders for advertising in specific spaces (space orders). The space may be used only by you for advertising of the advertiser's usual business and may not be transferred by you to another person.
- The guarantees contained in The Consumer Guarantees Act 1993 are excluded where you acquire goods and services from us for the purpose of a business.
- You must tell us as soon as possible if there is an error or omission in any advertisement the advertiser has placed. We will not be liable for any indirect or consequential loss (which includes loss of revenue or profit) from an error or omission or failure to publish and if we are found to have any direct liability for any circumstances that liability is limited to the cost of the space of the advertisement.
- To cancel an advertisement a cancellation number must be obtained from us at least three days prior to publication. Cancellations, which occur inside of the three-day working period, may incur a 100% penalty.
- The charges for an advertisement will be in accordance with the published ratecard applying at the time for the publication, unless we agree otherwise in writing. Rates for space orders apply for the whole space and are not reduced if the whole space is not used. Rates confirmed in advertising volume agreements will be honored over the period of that agreement if all other conditions of the agreement have been met by you.
- Advertising placed by advertisers who are not New Zealand residents will be zero-rated for GST purposes. GST will be applied at the standard rate to advertising placed by non-resident agents acting for New Zealand resident principals.
- If payment on a commercial account is not made by due date (which is the 20th of the month following invoice, unless we specify otherwise) you will be liable for interest at market rates and all costs of recovery, commission and collection fees.
- All casual advertising must be prepaid prior to publication. Payment by credit card for casual advertising is accepted.
- We may provide guidelines to be followed where you include internet addresses in advertising.



PROPOSED ROAD CLOSURES

A meeting of the Regulatory Processes Committee is scheduled for 9:15am Wednesday 14 November in the Te Mahanga Room (Committee Room 1) ground floor, Council offices, 101 Wakefield Street to consider the following proposed temporary road closures for events in 2013:

- Island Bay Festival**
- Street Parade – 12 noon – 3pm, Saturday 9 February
 Avon Street between Clyde Street and The Parade – parade assembly only – no through traffic – resident access only
- Day in the Bay Festival – 6am – 6pm, Sunday 10 February
 Reef Street between The Esplanade and The Parade
 The Esplanade between Derwent Street and Brighton Street
- Ribble Street Races – 9am – 4:30pm, Saturday 16 February
 All of Ribble Street closed

AMI Round the Bays Fun Run – Sunday 17 February

- Customhouse Quay southbound lanes from Whitmore to Jervois Quay from 6:30 – 11am
 Jervois Quay southbound lanes from Customhouse Quay to Cable Street from 6:30 – 11am
 Cable Street between Jervois Quay and Oriental Parade – right-hand lane open from Chaffers Street to Kent Terrace from 7 – 11am
 Oriental Parade from 7:45 – 11am
 Evans Bay Parade between Oriental Parade and Cobham Drive from 7:45am – 12 noon
 Evans Bay Parade between Cobham Drive and Kilmorie Crescent from 8am – 1pm
 Wellington Road, one way east between Crawford Road and Ruahine Street from 8 – 11:30am
 Shelly Bay Road from 8am – 12 noon
 Massey Road between Shelly Bay Road and approximately Point Gordon from 8am – 12 noon

Newtown Fair – 6am – 8pm, Sunday 3 March

- Riddiford Street between Main Street and a point south of Donald McLean Street
 Rintoul Street between Riddiford Street and Colombo Street
 Constable Street between Riddiford Street and Daniell Street
 Emmett Street
 Green Street
 Wilson Street for approximately 80 metres east off Riddiford Street – this closure extends to 9:30pm
 Newtown Avenue for approximately 80m east off Riddiford Street
 Normanby Street for approximately 80m east off Riddiford Street
 Donald McLean Street for approximately 50m east off Riddiford Street

In case of wet weather, the following street will be closed to ease pedestrian access to event spaces:

Colombo Street for approximately 30 metres west from its intersection with Rintoul Street

Any person objecting to a proposed road closure must contact Wellington City Council in writing before 5pm Friday 19 October 2012.

Please send correspondence to Charles Agate at the mailing address below, by email to charles.agate@wcc.govt.nz or by fax to 801 3009

Wellington City Council, 101 Wakefield Street, PO Box 2199, Wellington 6140 | Wellington.govt.nz