

## **PROPOSED TEMPORARY ROAD CLOSURE IMPACT REPORT:**

### **RUGBY SEVENS STREET PARADE AND ASSEMBLY – THURSDAY 2 FEBRUARY 2012**

---

#### **1. Description of Event**

The street parade is now a major part of celebrations for the annual Wellington leg of the International Rugby Sevens competition. Organised by the Wellington City Council Events Team, the organisers require a closure for the parade itself (to lessen the impact on traffic movements across the city) and for a safe assembly area for the performers, vehicles, teams and floats – the same footprint that was successfully run in 2011. Timings of the parade assembly closure have been adjusted to a 7am starting time and the parade route closure has been extended to a 1.55pm opening time. These times reflect 2011 set-up issues and the possible slow running of the parade. The proposed new timings will be well communicated to stakeholders.

It is therefore proposed to close the following roads to vehicle traffic: **Stout Street** (between Lambton Quay and Ballance Street - access to Creative N.Z. dock-way maintained); **Ballance Street** (between Lambton Quay and Stout Street - access for all Court vehicles maintained) from 7am to 1.30pm for the parade assembly and **Lambton Quay** (between Whitmore Street and Willis Street); **Willis Street** (between Lambton Quay/Willeston Street intersection and Manners Street); **Mercer Street** (between Willis Street and Victoria Street); **Victoria Street** (between Harris Street and Mercer Street, includes Mercer Street/Wakefield Street intersection drop off area) and **Wakefield Street** (northern side between Victoria Street and Cuba Street), from 12.40pm to 1.55pm for the parade. Pedestrian access will not be affected.

The proposed parade starts at 12.45pm from the corner of Ballance Street and Lambton Quay and proceeds via Lambton Quay, Willis Street and Mercer Street into Civic Square.

Local businesses and residents will receive a letter drop advising them of the road closures. Information signage will be erected at least 7 days before the event and there will be extensive public notification via the various media outlets. The closure is also to be advertised in the Our Wellington Page of the Dominion Post in the week preceding the event.

The road closures for the parade assembly, and the parade itself, will be traffic managed by a professional traffic management company. Emergency services will have immediate access to the area if required.

## **2. City Events Directorate Support**

The International Rugby Sevens has become a significant fixture on the city's Events Calendar. The proposed closure is supported by the City Events Directorate.

## **3. Proposal Notice and Consultation**

The public notice that the Council was proposing to consider this closure was published in the following newspaper:

- Dominion Post Saturday 12 November 2011

The New Zealand Police and the Ministry of Transport have also been consulted with.

Consultation with the local stakeholders within the assembly area has also been conducted in relation to the extended timing compared to the 2011 event.

## **4. Objections**

No objections were received in response to the proposal notice.

## **5. Traffic Impact Assessment**

### **Prior Closures**

None of the proposed closures for this event will result in a road being closed for an aggregate of more than 31 days in any year.

### **Traffic Impact**

In the opinion of Soon Teck Kong, Manager Transport Network, acting as the Council's Traffic Engineer, the proposed closure, if implemented according to the plans provided, is not likely to impede traffic unreasonably subject to the conditions listed below. However, the Council reserves the right to modify this opinion at any time. If, in the opinion of the Council, the closure may or does impede traffic unreasonably, any approval granted by the Regulatory Processes Committee may be revoked and the event organiser may be required to open the road at the direction of a suitably qualified Council officer in charge of traffic.

Conditions:

- The event organiser is to notify the public via newspaper advertisement, letter drop to affected parties, advanced signage and media releases.
- The event organiser is to ensure that the emergency services (Police, Fire and Ambulance Services) have been consulted with and that the Traffic Management Plan includes all of their specific requirements.

- The event organiser is to obtain Council approval on the details of the traffic management plan prior to the event.
- The event organiser is responsible for safety (pedestrian and traffic) within the closed area.
- The event organiser is to provide marshals at all road closures ends to ensure that public safety (interaction of traffic and spectators) is not compromised.
- The event organiser is to provide access to all properties affected by the road closures for the parade assembly.

Signed:  .....

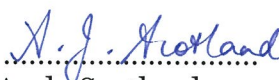
Soon Teck Kong  
Manager Transport Network

## ATTACHMENTS

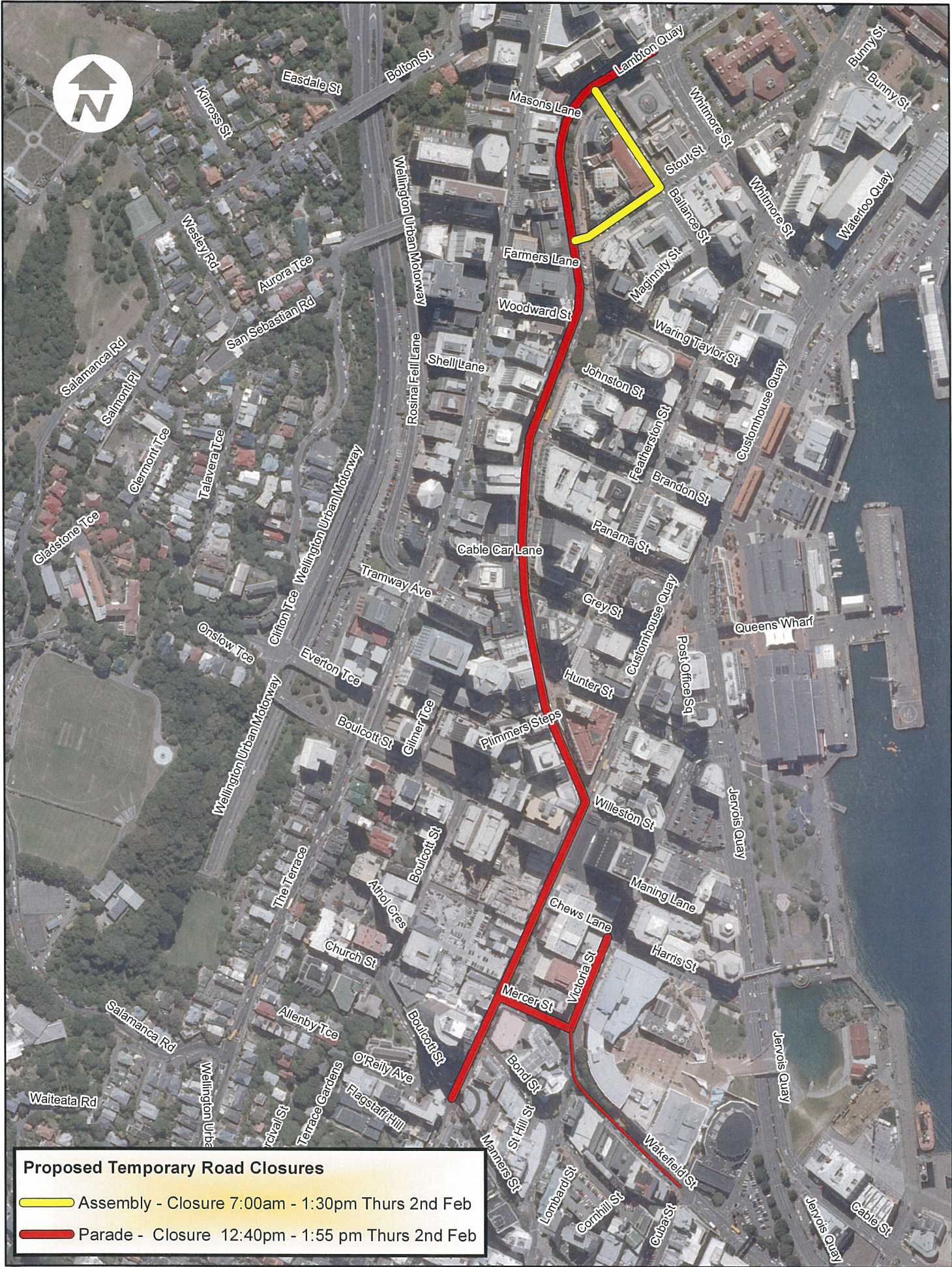
- Copy of proposal notice from the newspaper
- Map of proposed closure

Prepared By:  .....

Gail Reeves  
Street Activities Coordinator

Endorsed By:  .....

Andy Scotland  
GM Strategic Events



**Proposed Temporary Road Closures**

— Assembly - Closure 7:00am - 1:30pm Thurs 2nd Feb

— Parade - Closure 12:40pm - 1:55 pm Thurs 2nd Feb

**DATA STATEMENT**

Property boundaries  
Land Information NZ  
Licence: W1625547/2  
Crown Copyright reserved  
Accuracy in urban areas +/-1m  
Accuracy in rural areas +/-30m

Other data has been  
compiled from a  
variety of sources and  
its accuracy may vary

Topographic data  
Wellington City Council  
WCC copyright reserved  
Accuracy +/-30cm

Any contours displayed  
are only approximate  
and must not be used for  
detailed engineering design

Colour Orthophotography 1 500  
Town Mar 2005 owned by  
Wellington City Council

**Rugby Sevens Street Parade and Assembly  
Thurs 2nd February 2012**

**Absolutely  
POSITIVELY  
WELLINGTON CITY COUNCIL Wellington**

1:5,000