

---

**PROPOSED TEMPORARY ROAD CLOSURE  
IMPACT REPORT:**

**INTERNATIONAL RUGBY MATCH NEW ZEALAND V  
SOUTH AFRICA, SATURDAY 30 JULY 2011**

---

**1. Description of Event**

At the request of the New Zealand Police, and as part of test preparations for the Rugby World Cup 2011 (RWC) matches in Wellington 2011, road closures have been identified to enhance pedestrian safety and to better manage taxi vehicle behaviour in and around the Westpac Stadium. During the Rugby World Cup the capacity of the stadium will increase to approximately 40,000 for each game. Greater numbers of pedestrians walking to the stadium are expected for these matches - with many unfamiliar with Wellington roads and its traffic. The proposed road closures (and some parking restrictions) will affect roads and traffic in the area surrounding the Westpac Stadium on the evening of the Test Match New Zealand v South Africa – Saturday 30 July 2011. The proposed closures seek to provide a safer environment for pedestrians and a more effective way of managing taxis. The proposed closures are designed to cause as little disruption as possible to public transport and vehicle traffic while allowing access for businesses in the area.

The proposed closures are a test of the plans being prepared for the RWC matches. The Organisers, Traffic Engineers, Emergency Services and the New Zealand Police will have a chance to further refine and develop safety and traffic management plans based on the outcomes of these proposed closures.

Permission is sought to close **Bunny Street** (at its intersection with Featherston Street), from 5.30pm to 10.30pm and **Mulgrave Street** (between Aitken Street and the intersection of Featherston Street and Thorndon Quay); **Kate Sheppard Place** (at its intersection with Mulgrave Street); **Thorndon Quay** (between Davis Street and Featherston Street - local access only); **Featherston Street** (between Thorndon Quay and Whitmore Street – local access only) and **Stout Street** (between Whitmore Street and Bunny Street – local access only), from 8.30pm to 10.30pm on Saturday 30 July 2011.

Public notification signs will be placed at strategic points around the closures and detour routes will be well sign posted. The closures and the proposed traffic management system will also be advertised in the Our Wellington Page of the Dominion Post in the week preceding the event. Other notifications are also planned – these may include letter drops, extra signage, direct communication with stakeholders (especially Licensed Taxi Operators) and other public advertisements.

A traffic management plan approved by Council Officers will be necessary for the above proposal. The closures will be managed by a professional traffic management company, with the assistance of the New Zealand Police at certain points. Emergency services will have immediate access to all areas if required.

## **2. Rugby World Cup and Events Directorate Support**

Wellington, as one of the 23 Host Regions, plays a significant role in delivering the Rugby World Cup 2011. Wellington City Council, in association with the Match Venue provider Wellington Regional Stadium Trust, plays host to 6 pool and 2 quarter final matches at the Wellington Regional Stadium.

The Council has set itself critical success factors by which it will measure successful delivery. Performance of the traffic management plan (TMP) assists on delivering some of these factors, in particular:

- Positive visitor and residents experiences are achieved and provide enduring memories
- Rugby World Cup legacy outcomes are recognised by the community as a positive achievement for the city
- Key milestones are achieved and a state of readiness is demonstrated and reported throughout the Rugby World Cup programme of work.

Rugby New Zealand 2011 also has Key Strategic Goals which are embedded within our Host Region Agreement of which the following is most pertinent:

- Delivering an operationally excellent tournament.

Notwithstanding Rugby World Cup, Wellington City Council has a responsibility and duty of care to improve safety where opportunity exists. Taking this, the critical success factors and RNZ2011 Key Strategic Goals into account, improvements in pedestrian safety and taxi behaviour directly contribute and/or deliver upon these requirements.

To achieve these expectations for match days, it is essential to test the Traffic Management Plan and any proposed modifications. The proposed road closures (and some parking restrictions) deliver upon this need.

Officers from the Council's RWC and Events Directorate will also contribute support to The Organisers, Traffic Engineers, Emergency Services, the New Zealand Police and other stakeholders by assisting with coordination and provision of information as required and post event assessment and review of any further proposed amendment prior to RWC.

This event does not detrimentally impact upon any other Council event and is complimentary to the Event's calendar.

### **3. Proposal Notice and Consultation**

The public notice that the Council was proposing to consider this closure was published in the following newspaper:

- Dominion Post Saturday 14 May 2011

The New Zealand Police, Fire Services, Wellington Free Ambulance and the Ministry of Transport have also been consulted with.

Council discussed options with the taxi industry during the Taxi Forum held on the 25<sup>th</sup> of March 2011. Concerns raised have been incorporated in the proposed road closures and Traffic Management Plan. Licensed taxi operators were also given an opportunity to discuss their ideas on ways to improve operation by attending a forum on the 28<sup>th</sup> of April. However with only 2 of the 17 organisations confirming they would like to attend, the forum was cancelled. Subsequently those taxi companies expressing an interest to share their ideas have been met with Council officers on a one on one basis.

### **4. Objections**

No objections were received in response to the proposal notice.

### **5. Traffic Impact Assessment**

#### **Prior Closures**

None of the proposed closures for this event will result in a road being closed for an aggregate of more than 31 days in any year.

#### **Traffic Impact**

In the opinion of Soon Teck Kong, Manager Transport Network, acting as the Council's Traffic Engineer, the proposed closures subject to the conditions below, if implemented according to the plans provided, will minimise the duration of the traffic impacts, mitigate issues of local access, address public safety concerns and assess the effectiveness of the Temporary Traffic Management. However, the Council reserves the right to modify this opinion at any time. If, in the opinion of the Council, the closure may or does impede traffic unreasonably, any approval granted by the Regulatory Processes Committee may be revoked and the event organiser may be required to open the road at the direction of a suitably qualified Council officer in charge of traffic.

The key features of the Temporary Road Closures will include a dedicated area for drop off and pick up in Bunny Street before and after Stadium event. The two-hour duration for the road closures along parts of Thorndon Quay and Featherston Street will also allow the safe egress of Stadium Patrons after the event and minimise the disruption to traffic flows and local access.

Conditions:

- The event organiser is to publicly notify the event via letter drop, local newspaper advertisement, advanced signage and media releases.


- The event organiser is to ensure that the emergency services (Police, Fire and Ambulance Services) have been consulted with and that the Traffic Management Plan includes all of their specific requirements.
- The event organiser is to ensure that the event is approved by the emergency services (Police, Fire and Ambulance Services) and subject to their conditions of approval.
- The event organiser is to ensure that the affected property owners and businesses along the road closure are consulted with.
- The event organiser is to provide marshals at all road closure ends to ensure that public safety (interaction of traffic and spectators) is not compromised.
- Detour routes are to be provided and clearly signed during the road closure period.
- The event organiser is to work with the public transport operators to provide access for public transport services.
- The event organiser is to provide further details of the Traffic Management Plan to Council for approval prior to the event.
- The event organiser is to provide Variable Message Signs at major routes to advise drivers of these road closures in, particular routes from the North along the Motorway and Aotea Quay.
- The after event road closures are not to be closed prior to 8.30pm Saturday 30 July 2011 to retain transport network accessibility and minimise public inconvenience.

Signed:  .....


Soon Teck Kong  
Manager Transport Network

## ATTACHMENTS

- Copy of proposal notice from the newspaper
- Map of proposed closure

Prepared By:  .....

Gail Reeves  
Street Activities Coordinator

Endorsed By:  .....

Derek Fry  
Director,  
Rugby World Cup

Absolutely

POSITIVELY

ME HEKE KI PŌNEKE  
WELLINGTON CITY COUNCIL Wellington

## Proposed road closures for rugby events

A meeting of the Regulatory Processes Committee has been scheduled for 1pm on Wednesday 8 June in Te Mahanga Room (Committee Room 1), ground floor, Council offices, 101 Wakefield Street, Wellington to consider the following proposed temporary road closures for events:

### International rugby match New Zealand vs South Africa – Saturday 30 July

- Bunny Street at its intersection with Featherston Street from 5.30pm to 10.30pm
- Mulgrave Street between Aitken Street and the intersection of Featherston Street and Thorndon Quay from 8.30pm to 10.30pm
- Kate Sheppard Place at its intersection with Mulgrave Street from 8.30pm to 10.30pm
- Thorndon Quay between Davis Street and Featherston Street from 8.30pm to 10.30pm – local access only
- Featherston Street between Thorndon Quay and Whitmore Street from 8.30pm to 10.30pm – local access only
- Stout Street between Whitmore Street and Bunny Street from 8.30pm to 10.30pm – local access only.

#### Note:

- 'local access' refers to residents, businesses and taxis
- these closures are planned for pedestrian safety reasons
- post-match closures will last for approximately one hour after the conclusion of the match
- regular bus services will have marshalled access within the road closures – no alternative routes required
- Wellington Railway Station can be accessed via the intersection of Bunny Street and Waterloo Quay for dropping off and picking up passengers
- taxi ranks will be operational
- the following roads may be managed for traffic and pedestrian safety by using lane closures, marshalled access and/or parking restrictions:
  - Stout Street (access from Whitmore Street)
  - Murphy Street at its intersection with Aitken Street
- detour route(s) will be signposted
- emergency services will have immediate access at all times.

### Rugby World Cup 2011 (RWC 2011) stadium area closures – for the eight games beginning Sunday 11 September up to and including Sunday 9 October

#### Sunday 11 September, Friday 23 September and Sunday 25 September:

- Bunny Street at its intersection with Featherston Street from 6.30pm to 11.30pm
- Mulgrave Street between Aitken Street and the intersection of Featherston Street and Thorndon Quay from 9.30pm to 11.30pm
- Kate Sheppard Place at its intersection with Mulgrave Street from 9.30pm to 11.30pm
- Thorndon Quay between Davis Street and Featherston Street from 9.30pm to 11.30pm – local access only
- Featherston Street between Thorndon Quay and Whitmore Street from 9.30pm to 11.30pm – local access only
- Stout Street between Whitmore Street and Bunny Street from 9.30pm to 11.30pm – local access only.

#### Saturday 17 September, Saturday 1 October, Saturday 8 October and Sunday 9 October:

- Bunny Street at its intersection with Featherston Street from 4pm to 9pm
- Mulgrave Street between Aitken Street and the intersection of Featherston Street and Thorndon Quay from 7pm to 9pm
- Kate Sheppard Place at its intersection with Mulgrave Street from 7pm to 9pm
- Thorndon Quay between Davis Street and Featherston Street from 7pm to 9pm – local access only
- Featherston Street between Thorndon Quay and Whitmore Street from 7pm to 9pm – local access only
- Stout Street between Whitmore Street and Bunny Street from 7pm to 9pm – local access only.

#### Sunday 2 October:

- Bunny Street at its intersection with Featherston Street from 1.30pm to 6.30pm
- Mulgrave Street between Aitken Street and the intersection of Featherston Street and Thorndon Quay from 4.30pm to 6.30pm
- Kate Sheppard Place at its intersection with Mulgrave Street from 4.30pm to 6.30pm
- Thorndon Quay between Davis Street and Featherston Street from 4.30pm to 6.30pm – local access only
- Featherston Street between Thorndon Quay and Whitmore Street from 4.30pm to 6.30pm – local access only
- Stout Street between Whitmore Street and Bunny Street from 4.30pm to 6.30pm – local access only.

#### Note:

- 'local access' refers to residents, businesses and taxis
- these closures are planned for pedestrian safety reasons
- post-match closures will last for approximately one hour after the conclusion of the matches
- there will be no public parking at Wellington Regional Stadium for any RWC 2011 matches
- there will be no public vehicle access into the Wellington Regional Stadium for any RWC 2011 matches for dropping off and picking up passengers, unless the vehicle displays an approved Mobility Parking Permit
- regular bus services will have marshalled access within the road closures, except on 8 and 9 October where they will bypass Courtenay Place via Cable and Wakefield streets
- Wellington Railway Station can be accessed via the intersection of Bunny Street and Waterloo Quay for dropping off and picking up passengers
- taxi ranks will be operational
- the following roads may be managed for traffic and pedestrian safety by using lane closures, marshalled access and/or parking restrictions:
  - Stout Street (access from Whitmore Street)
  - Murphy Street at its intersection with Aitken Street
- detour route(s) will be signposted
- emergency services will have immediate access at all times.

### Rugby World Cup 2011 Courtenay live site – from 4am Saturday 8 October to 6am Monday 10 October

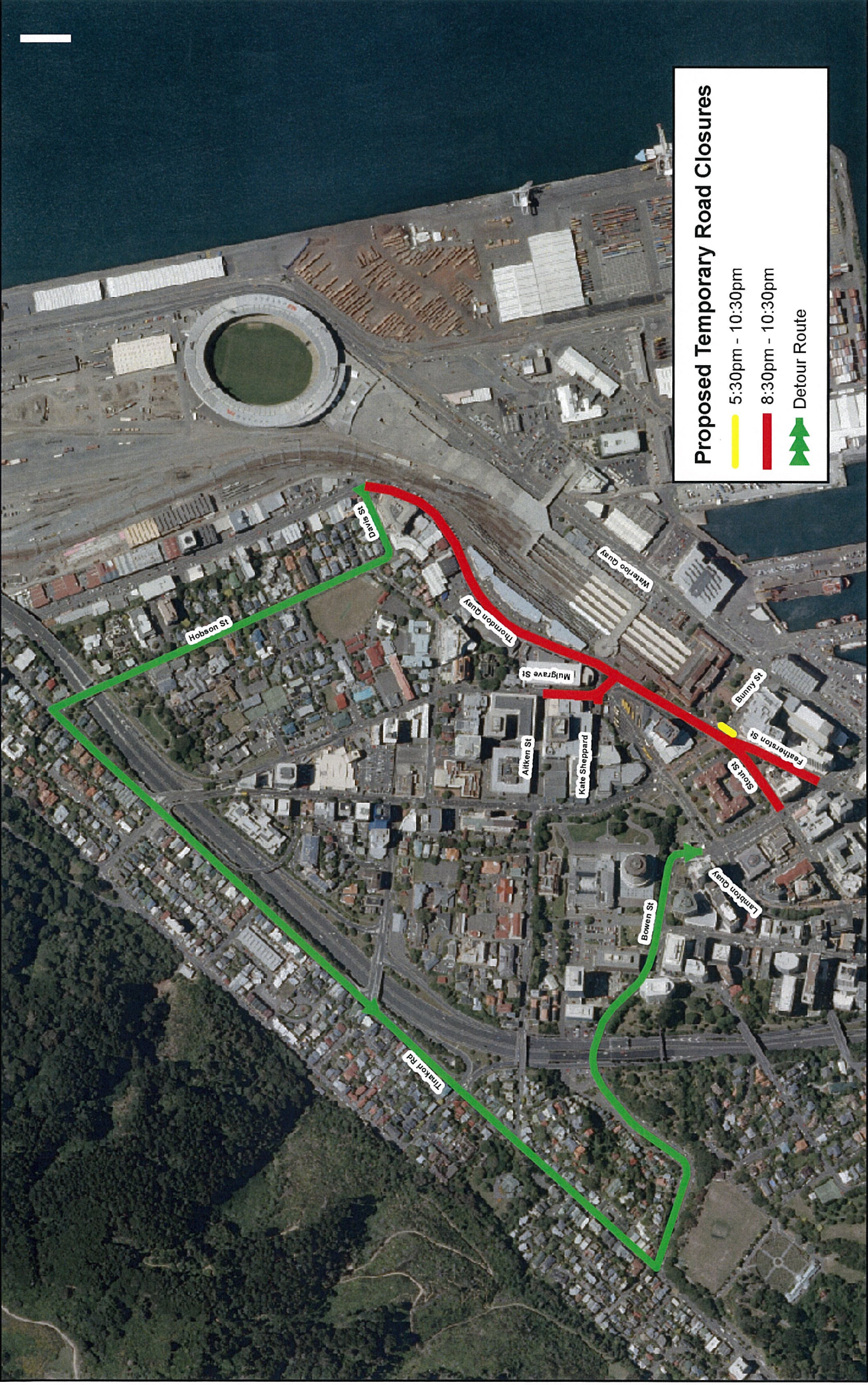
- Courtenay Place – completely closed
- Blair Street – completely closed
- Allen Street – completely closed
- Tory Street between Wakefield Street and Tennyson Street, including Holland Street and Forrester's Lane
- Taranaki Street between Ghuznee Street and Wakefield Street, including York Street and Lukes and Halleys lanes
- Inglewood Place – completely closed
- Dixon Street between Taranaki Street and Victoria Street, including Christeson Lane
- Manners Street between Taranaki Street and Victoria Street
- Cuba Street between Manners Street and Wakefield Street.

#### Note:

- local access will be provided each morning, including resident, business, service and delivery vehicles
- emergency services will have immediate access at all times.

**Any person objecting to a proposed road closure must contact Wellington City Council in writing before 4pm Friday, 27 May 2011. Please send correspondence to Gail Reeves at the mailing address below, by email to [gail.reeves@wcc.govt.nz](mailto:gail.reeves@wcc.govt.nz) or by fax to 801 3009.**

**Wellington City Council, 101 Wakefield Street,  
PO Box 2199, Wellington 6140 • [Wellington.govt.nz](http://Wellington.govt.nz)**



**Proposed Temporary Road Closures**

5:30pm - 10:30pm

8:30pm - 10:30pm

Detour Route

**International Rugby Match  
New Zealand vs South Africa  
Saturday 30 July 2011**

**Absolutely  
POSITIVELY  
Wellington**  
We're here to make Wellington City Council

**DATA STATEMENT**  
Other data has been  
Property boundaries  
Licence W1000347/2  
Data Copyright reserved  
Accuracy in rural areas +/- 50m  
Topographic data  
Wellington City Council  
Accuracy +/- 30m  
Any contours displayed  
are only approximate  
and are not for  
engineered design  
Colour Orthorectification 1:500  
Resolution 0.5m  
Wellington City Council