
PROPOSED TEMPORARY ROAD CLOSURE IMPACT REPORT:

BOLLYWOOD FILMING PROJECT – SUNDAY 16 TO MONDAY 31 JANUARY 2011

1. Description of Event

Players Film Limited, an Indian based production company, has applied for permission to film at a variety of locations in and around Wellington City and the wider Wellington region. The film production “Players” is a Bollywood version of the popular car chase movie “The Italian Job” and will centre on a car chase scenario involving several mini cars.

Some of the proposed filming locations involve road closures for public safety and to set up the correct shots. It is therefore proposed to close the following roads for three days – Sunday 16, Sunday 23 and Monday 24 January (5.30am-9.30pm): **Featherston Street** (between Waring Taylor Street and Panama Street); **Brandon Street** (between Customhouse Quay and Lambton Quay - with limited resident access). It is also proposed to close **Johnston Street** (between Lambton Quay and Customhouse Quay – with limited resident access) on Sunday 16 and Sunday 23 January (not Monday 24 January). These three streets are the proposed location of major city scenes in the film. It is also proposed to close the following roads for other important scenes: **Woodward Street** (between The Terrace and Lambton Quay), on Saturday 22 January (6.30am-10am); **The Terrace pedestrian access-way/under-pass** (Clifton Terrace to Woodward Street, on Saturday 22 January (6.30am-7pm) and **Massey Road** (from a point midway in Kau Bay to a point several hundred metres south of Point Halswell), on Monday 31 January (5.30am-9.30pm).

Film Wellington is working with Council officers and the film-makers to support and facilitate this permission process. Film Wellington is a programme of the region’s economic development agency, Grow Wellington. It aims to attract and facilitate film production and liaises between the film makers and government agencies, local industry, property owners and businesses, media, the public and local authorities to enable the best solution for each filming request.

This filming will contribute to the Wellington economy by providing jobs for Wellington residents and income for a variety of Wellington businesses. As these Bollywood stars are very high profile, and Wellington will be portrayed as itself (as opposed to doubling as another city), the main economic benefits are expected to be longer term tourism ones. Tourism New Zealand is currently interested in the potential to leverage exposure from this project – given their recent success with a similar project in Queenstown. The production also will

also have connections to the wider Wellington Indian community. They are planning to host a number of the cast and crew and to hold cultural events around the filming timetable.

Film Wellington and the production company have completed a preliminary notification letter drop and have had personal communication with residents and businesses affected by the closure - indicating the proposal and requesting feedback. The road closures proposed take into account the feedback received in this first phase of consultation. If permission is received to close the roads, a comprehensive communication plan will be developed - with a second letter drop to be undertaken to affected parties, notification signs to be erected on the streets affected and notification to be advertised on Our Wellington Page of the Dominion Post.

Traffic management plans will be in place and managed by a professional traffic management company with understanding of filming events. These plans will address traffic management and parking issues, resident and business access, directional signage, applicable detour signage and suitable pedestrian control measures.

Pedestrian and emergency access will be maintained, although there may be some brief periods when pedestrians may be asked to wait while an activity is filmed.

2. Rugby World Cup and Events Directorate Support

The Events Directorate has no objection to this event.

3. Proposal Notice and Consultation

The public notice that the Council was proposing to consider this closure was published in the following newspaper:

- Dominion Post Saturday 20 November 2010

The New Zealand Police and the Ministry of Transport have also been consulted with.

4. Objections

No objections were received in response to the proposal notice.

5. Traffic Impact Assessment

Prior Closures

None of the proposed closures for this event will result in a road being closed for an aggregate of more than 31 days in any year.

Traffic Impact

In the opinion of Soon Teck Kong, acting as the Council's Traffic Engineer, the proposed closure, if implemented according to the plans provided, is not likely to impede traffic unreasonably. However, the Council reserves the right to modify this opinion at any time. If, in the opinion of the Council, the closure may or does impede traffic unreasonably, any approval granted by the Regulatory Processes Committee may be revoked and the event organiser may be required to open the road at the direction of a suitably qualified Council officer in charge of traffic.

Conditions:

- The organiser is to publicly notify the event via letter drop, local newspaper advertisement, advanced signage and radio releases.
- The organiser is to ensure that emergency services (Police, Fire and Ambulance Services) are consulted with and their concerns accommodated in the Traffic Management Plan.
- The event organiser is to ensure that the affected property owners and businesses along the road closures are consulted with to address and arrange their access requirements and to provide marshalled assistance.
- The organiser is to provide foot access to affected businesses operating during the road closure periods.
- The organiser is to provide marshals at all closure ends to ensure that public safety (interaction of traffic and spectators) is not compromised.
- The organiser is to work with the public transport operators to provide an alternative public transport route and bus stops if required.
- The organiser is to provide further details of the Traffic Management Plan to Council for approval prior to the road closures.

Signed:.....

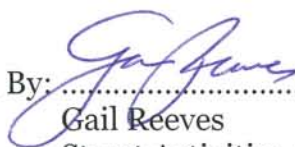


Soon Teck Kong
Manager Transport Network

ATTACHMENTS

- Copy of proposal notice from the newspaper
- Map of proposed closure

Prepared By:.....



Gail Reeves
Street Activities Coordinator

Endorsed By:.....



Andy Scotland
GM Strategic Events



DATA STATEMENT
 Property boundaries
 Land information NZ
 Crown Wellington
 Accuracy in urban areas +/- 1m
 Accuracy in rural areas +/- 30m

Other data has been
 compiled from a range of
 sources and
 its accuracy may vary

Any contours displayed
 are only approximate
 and should not be used for
 detailed engineering design

Colour Orthophotography 1:500
 is not a true representation of
 the ground surface and
 Wellington City Council

**Bollywood Film Project
 Road Closure, from 5:30am-9:30pm
 Monday 31st January**

**Absolutely
 POSITIVELY
 WELLINGTON**
 HE HEKE KI PŌHĒAKE
 WELLINGTON CITY COUNCIL

1:5,000



Proposed Temporary Road Closures

- █ Closures 5:30am-9:30pm Sun 16th, Sun 23rd & Mon 24th Jan
- █ Closures 5:30am-9:30pm Sun 16th & Sun 23rd Jan
- █ Closure 6:30am-10:00am Sat 22nd Jan
- █ Closure 6:30am-7:00pm Sat 22nd Jan

Absolutely POSITIVELY
 ME HEKE KI PŌHĀRE
 WELLINGTON CITY COUNCIL

**Bollywood Film Project
 Temporary Road Closures**

DATA STATEMENT
 Property boundaries
 Land Use
 Land Use
 Crown Copyright reserved
 Accuracy in urban areas +1.5m
 Accuracy in rural areas +1.50m
 Topographic data
 Wellington City Council
 Accuracy +1.50m

Other data has been
 derived from a range of
 sources and
 its accuracy may vary

Any content displayed
 on this map is for
 information only
 and must not be used for
 detailed engineering design

Colour Orthophotography 1:500
 from Mar 2008, owned by
 Wellington City Council

**PROPOSED TEMPORARY ROAD CLOSURE
IMPACT REPORT:**

**RUGBY SEVENS STREET PARADE
THURSDAY 3 FEBRUARY 2011**

1. Description of Event

The street parade is now a major part of celebrations for the annual Wellington leg of the International Rugby Sevens competition. Organised by the Wellington City Council Events Team, the organisers require a closure for the parade itself this year and for a safe assembly area for the performers, vehicles, teams and floats - as in previous years. The assembly area is also proposed to be relocated to a different location in 2011 - to lessen the impact on traffic movements across the city.

It is therefore proposed to close the following roads to vehicle traffic: **Stout Street** (between Lambton Quay and Ballance Street - access to Creative N.Z. dock-way maintained); **Ballance Street** (between Lambton Quay and Stout Street - access for Court vehicles maintained) from 9am to 1.30pm for the parade assembly and **Lambton Quay** (between Whitmore Street and Willis Street); **Willis Street** (between Lambton Quay/Willeston Street intersection and Manners Street); **Mercer Street** (between Willis Street and Victoria Street); **Victoria Street** (between Harris Street and Mercer Street, includes Mercer Street/Wakefield Street intersection drop off area) and **Wakefield Street** (northern side between Victoria Street and Cuba Street), from 12.40pm to 1.40pm for the parade. Pedestrian access will not be affected.

The proposed parade starts at 12.45pm from the corner of Ballance Street and Lambton Quay and proceeds via Lambton Quay, Willis Street and Mercer Street into Civic Square.

Local businesses and residents will receive a letter drop advising them of the road closures. Information signage will be erected at least 7 days before the event and there will be extensive public notification via the various media outlets. The closure is also to be advertised in the Our Wellington Page of the Dominion Post in the week preceding the event.

The road closures for the parade assembly, and the parade itself, will be traffic managed by a professional traffic management company. Emergency services will have immediate access to the area if required.

2. Rugby World Cup and Events Directorate Support

The International Rugby Sevens has become a significant fixture on the city's Events Calendar. The proposed closure is supported by the Events Directorate.

3. Proposal Notice and Consultation

The public notice that the Council was proposing to consider this closure was published in the following newspaper:

- Dominion Post Saturday 20 November 2010

The New Zealand Police and the Ministry of Transport have also been consulted with.

Consultation with the local stakeholders within the new assembly area was conducted in October in preparation for this proposal.

4. Objections

No objections were received in response to the proposal notice.

5. Traffic Impact Assessment

Prior Closures

None of the proposed closures for this event will result in a road being closed for an aggregate of more than 31 days in any year.

Traffic Impact

In the opinion of Soon Teck Kong, Manager Transport Network, acting as the Council's Traffic Engineer, the proposed closure, if implemented according to the plans provided, is not likely to impede traffic unreasonably subject to the conditions listed below. However, the Council reserves the right to modify this opinion at any time. If, in the opinion of the Council, the closure may or does impede traffic unreasonably, any approval granted by the Temporary Road Closures Subcommittee may be revoked and the event organiser may be required to open the road at the direction of a suitably qualified Council officer in charge of traffic.

Conditions:

- The event organiser is to notify the public via newspaper advertisement, letter drop to affected parties, advanced signage and media releases.
- The event organiser is to obtain Council approval on the details of the traffic management plan prior to the event.
- The event organiser is responsible for safety (pedestrian and traffic) within the closed area.

- The event organiser is to provide marshals at all road closures ends to ensure that public safety (interaction of traffic and spectators) is not compromised.
- The event organiser is to provide access to all properties affected by the road closures for the parade assembly.

Signed: 

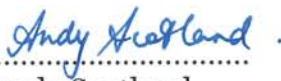
Soon Teck Kong
Manager Transport Network

ATTACHMENTS

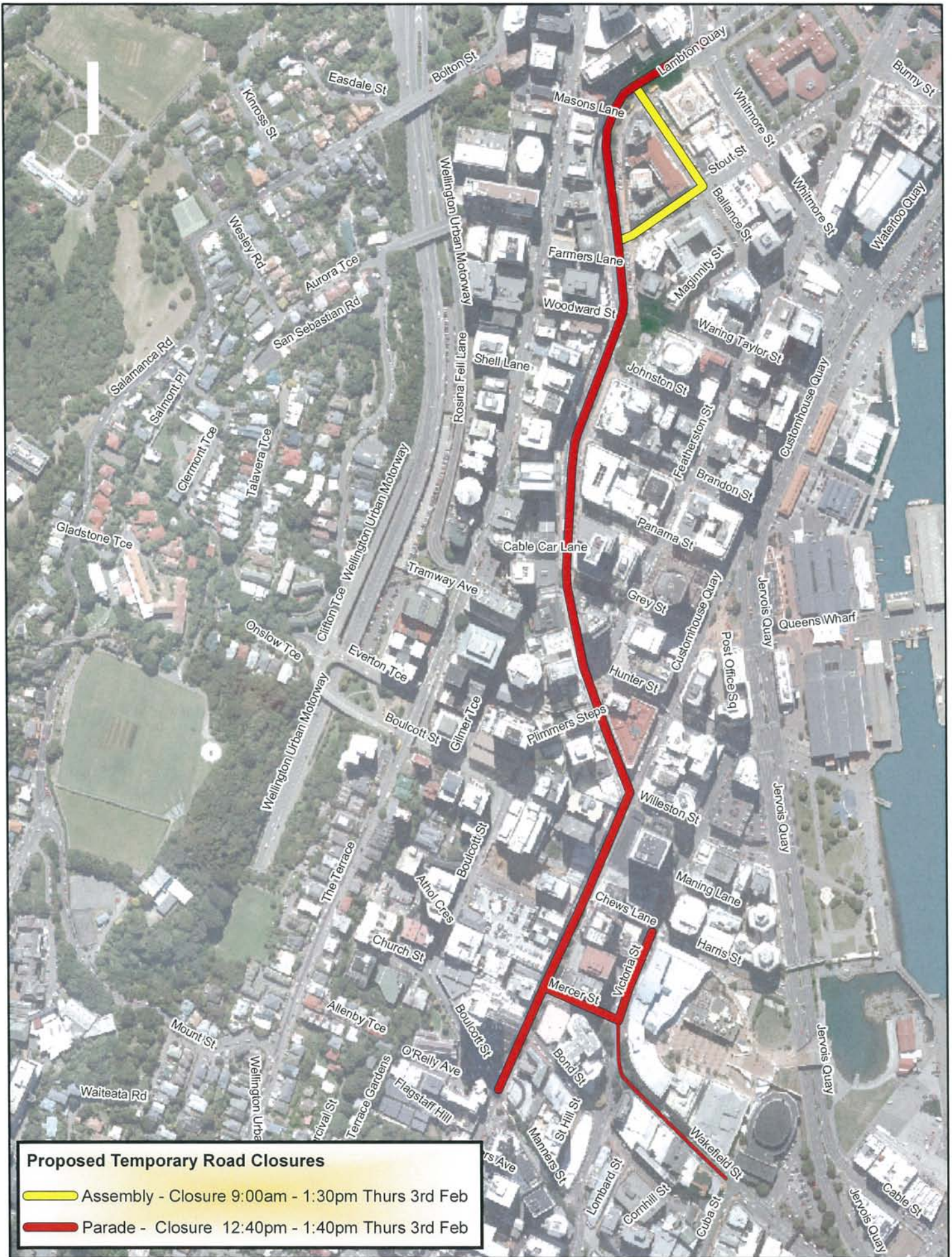
- Copy of proposal notice from the newspaper
- Map of proposed closure

Prepared By: 

Gail Reeves
Street Activities Coordinator

Endorsed By: 

Andy Scotland
GM Strategic Events



Proposed Temporary Road Closures

- Assembly - Closure 9:00am - 1:30pm Thurs 3rd Feb
- Parade - Closure 12:40pm - 1:40pm Thurs 3rd Feb

DATA STATEMENT

Property boundaries
Land Information NZ
Licence W010235472
© Crown Copyright reserved
Accuracy in urban areas: +/- 1m
Accuracy in rural areas: +/- 30m

Other data has been
compiled from a
variety of sources and
its accuracy may vary

Any contours displayed
are only approximate
and must not be used for
detailed engineering design

Colour Orthophotography 1:500
from Mar 2006 owned by
Wellington City Council

**Rugby Sevens Street Parade and Assembly
Thurs 3rd February 2011**

**Absolutely
POSITIVELY
Wellington**
We Make It **POWERS**
WELLINGTON CITY COUNCIL

1:5,000

PROPOSED TEMPORARY ROAD CLOSURE IMPACT REPORT:

RUGBY SEVENS STREET PARTY 5 – 6 FEBRUARY 2011

1. Description of Event

Following discussions with the Police, the Rugby World Cup and Events Directorate of the City Council have proposed road closures, for reasons of public health and safety, for areas surrounding the 2011 Rugby Sevens Street Party. It is therefore proposed to close **Courtenay Place** (Cambridge Terrace to Taranaki Street); **Blair Street** (limited resident access); **Allen Street** (limited resident access); **Tory Street** (Wakefield Street to Forresters Lane – limited resident access), from 5pm Saturday 5 February until 6am Sunday 6 February 2011. It is also proposed to close additional areas later the same evening - again for pedestrian safety reasons when numbers usually swell. It is therefore proposed to close **Taranaki Street** (Ghuznee Street to Wakefield Street – limited resident access, including York Street, Lukes and Halleys Lane); **Inglewood Place** (limited resident access to the parking building maintained); **Dixon Street** (Courtenay Place to Egmont Street); **Manners Street** (Courtenay Place to Lukes Lane), from 9pm Saturday 5 February to 6am Sunday 6 February 2011.

The closures will enable the positioning of a mobile screen and stage, for the use of bands and performers, and to enable safe pedestrian flows on the Saturday evening of the Rugby Sevens Tournament. Pedestrian traffic only will be allowed within the closed area. In addition to the entertainment available, extra toilet and rubbish facilities will be provided. The liquor ban that covers public places in the CBD will stay in force over the Sevens weekend.

Local businesses and residents will receive a letter drop advising them of the event and the road closure. Road closure notification boards will be placed at each end of the closures at least a week before the event. The closure is also to be advertised in the Our Wellington Page of the Dominion Post in the week preceding the event and by media releases.

The event is to be traffic managed by a professional traffic management company and emergency services will have immediate access to the area if required. Public transport operators have been consulted with concerning the proposed closures and temporary bus stops and detour routes can be in place.

2. Rugby World Cup and Events Directorate Support

The International Rugby Sevens has become a significant fixture on the city's Events Calendar. Closing Courtenay Place and associated roads on the Saturday night will ease pedestrian traffic congestion and provide a safer environment in the area. The inclusion of entertainment and a big screen will add additional value to the Sevens event for visitors and locals.

The proposed closure is supported by the Police and the Events Directorate.

In addition, this event and the proposed road closures are seen to be an ideal opportunity to trial the road closure footprint and procedures for the Rugby World Cup (RWC) Quarter-finals weekend. It is a chance to test proposed changes to the pedestrian movement into the area - in line with what will be required for the RWC. It is also an opportunity to trial emergency service procedures, security and as many infrastructural elements as possible.

3. Proposal Notice and Consultation

The public notice that the Council was proposing to consider this closure was published in the following newspaper:

- Dominion Post Saturday 20 November 2010

The New Zealand Police and the Ministry of Transport have also been consulted with.

4. Objections

No objections were received in response to the proposal notice.

5. Traffic Impact Assessment

Prior Closures

None of the proposed closures for this event will result in a road being closed for an aggregate of more than 31 days in any year.

Traffic Impact

In the opinion of Soon Teck Kong, Manager Transport Network, acting as the Council's Traffic Engineer, the proposed closure, if implemented according to the plans provided, is likely to impede traffic flows on several major routes. The proposed conditions below will mitigate some of the expected traffic congestion during the road closures. The expected congestion during the road closures is part of facilitating a public event and ensuring safety for the general public. However, the Council reserves the right to modify this opinion at any time. If, in the opinion of the Council, the closure may or does impede traffic unreasonably, any approval granted by the Regulatory Processes Committee may be revoked and the event organiser may be required to open the road at the direction of a suitably qualified Council officer in charge of traffic.

Conditions:

- The event organiser is to publicly notify the event via letter drop, newspaper advertisement, advanced signage and media releases.
- The event organiser is to ensure that the emergency services (Police, Fire and Ambulance Services) have been consulted with and that the Traffic Management Plan includes all of their specific requirements.
- The event organiser is to ensure that the affected property owners and businesses along the road closure are consulted with.
- The event organiser is to provide marshals at all road closure ends to ensure that public safety (interaction of traffic and spectators) is not compromised and property access options are arranged for affected parties.
- Detour routes are to be provided and clearly signed during the road closure period.
- The event organiser is to work with the public transport operators to provide alternative public transport route and bus stops for both stages of road closures.
- The event organiser is to provide further details of the Traffic Management Plan to Council for approval prior to the event.

Signed:.....



Soon Teck Kong
Manager Transport Network

ATTACHMENTS

- Copy of proposal notice from the newspaper
- Map of proposed closure

Prepared By:.....

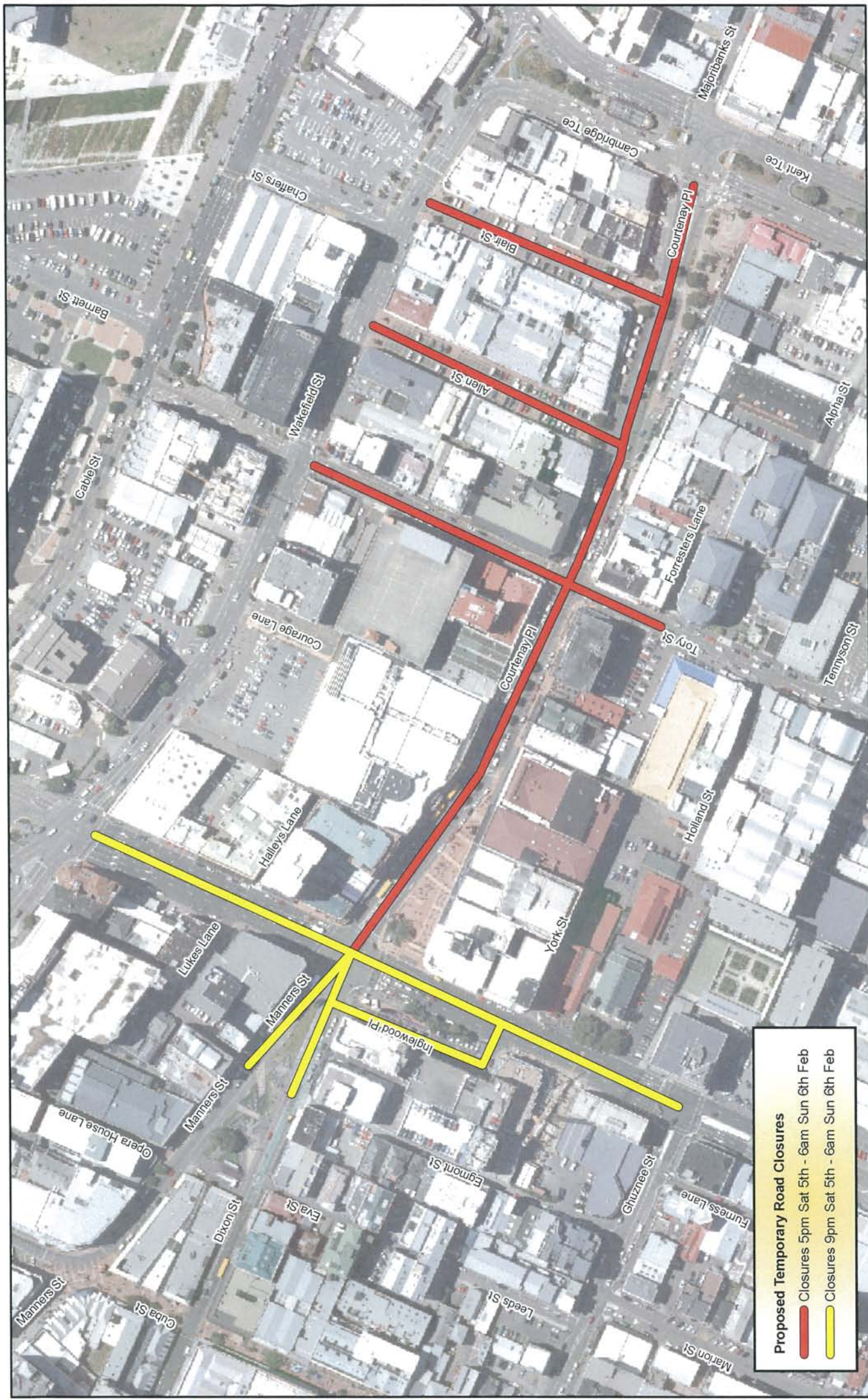


Gail Reeves
Street Activities Coordinator

Endorsed By:.....



Andy Scotland
GM Strategic Events



Proposed Temporary Road Closures

- Closures 5pm Sat 5th - 6am Sun 6th Feb
- Closures 9pm Sat 5th - 6am Sun 6th Feb

Absolutely POSITIVELY
 ME HERE ME PŌHĀKE
 WELLINGTON CITY COUNCIL

Sevens Street Party Temporary Road Closures Sat 5th - Sun 6th February 2011

DATA STATEMENT
 Other data has been compiled from a variety of sources and its accuracy may vary.
 Any contours displayed are only approximate and must not be used for detailed engineering design.
 Topographic data Wellington City Council WCC copyright reserved Accuracy: +/- 30m
 Colour Orthorectification 1:500 from Mar 2010 compiled by Wellington City Council

PROPOSED TEMPORARY ROAD CLOSURE IMPACT REPORT:

ISLAND BAY FESTIVAL EVENTS – SATURDAY 12 & SUNDAY 13 FEBRUARY 2011

1. Description of Event

The Island Bay Enhancement Trust has successfully produced festival events in Island Bay for the past 25 years. The festival programme is planned to span seven days, with the three major events in the programme being the Ribble Street Races, the Festival Parade and the “Day in the Bay” street festival.

The proposed road closures, to vehicles only, are of **Ribble Street**, from 8am to 4.30pm, on Saturday 12 February 2011 (postponement date Sunday 13 February 2011) for the **Ribble St Races** event. This is a trolley derby involving a series of races based on age groups, gender, and types of trolleys, hill and flat races. This event is an iconic Island Bay event that has been successfully run in previous years, with great community support and participation. The organisers will provide a detailed safety and site plan, there will be no parking in the street and participants will be supervised at all times. It is also proposed to close **The Esplanade** (Derwent Street to Brighton Street) and **Reef Street** (The Esplanade to The Parade – with limited resident access), from 6am until 6pm, on Sunday 13 February 2011 for the “**Day in the Bay**” street festival. This event centres activities on Island Bay beach and it’s planned to hold concerts and other events in the adjacent Shorland Park. It is also planned to have family friendly activities and food and craft stalls on the proposed closed roads.

The **Festival Parade** is on Saturday 12 February 2011 and will be carried out on an open road under a temporary traffic management plan. This will be administered by professional traffic management company.

The Trust will also engage a professional traffic management company to safely manage the road closures. Amendments to the Traffic Management Plan will be made following difficulties with car parking in previous years. Road closure notification signs will be placed at each end of the closures, at least one week prior to the events. Residents and local businesses will receive a letter drop advising them of the events and the proposed road closures. The event is also to be advertised by a website, shop posters, school and church networks and by an advertisement in the Our Wellington Page of the Dominion Post in the week preceding the derby, parade and festival.

Pedestrian access will not be restricted and emergency services will have immediate access to the area if required. Public transport operators have been notified of the proposal.

2. Rugby World Cup and Events Directorate Support

The Events Directorate has no objection to this event.

3. Proposal Notice and Consultation

The public notice that the Council was proposing to consider this closure was published in the following newspaper:

- Dominion Post Saturday 20 November 2010

The New Zealand Police and the Ministry of Transport have also been consulted with.

4. Objections

No objections were received in response to the proposal notice.

5. Traffic Impact Assessment

Prior Closures

None of the proposed closures for this event will result in a road being closed for an aggregate of more than 31 days in any year.

Traffic Impact

In the opinion of Soon Teck Kong, Manager Transport Network, acting as the Council's Traffic Engineer, the proposed closure, if implemented according to the plans provided, is not likely to impede traffic unreasonably subject to the conditions below. However, the Council reserves the right to modify this opinion at any time. If, in the opinion of the Council, the closure may or does impede traffic unreasonably, any approval granted by the Regulatory Processes Committee may be revoked and the event organiser may be required to open the road at the direction of a suitably qualified Council officer in charge of traffic.

Conditions:

- The event organiser is to publicly notify the event via letter drop, local newspaper advertisement, advanced signage and media releases.
- The event organiser is to ensure that the emergency services (Police, Fire and Ambulance Services) have been consulted with and that the Traffic Management Plan includes all of their specific requirements.
- The event organiser is to ensure that the affected property owners along the road closures are consulted with (in particular Ribble Street, Reef Street and The Esplanade).


- The event organiser is to provide marshals at the road closure ends to ensure that public safety (interaction of traffic and spectators) is not compromised.
- A detour route is to be provided and clearly signed during the road closures – in particular The Esplanade.
- The event organiser is to provide further details of the Traffic Management Plan to Council for approval prior to the event.

Signed:.....
Soon Teck Kong
Manager Transport Network

ATTACHMENTS

- Copy of proposal notice from the newspaper
- Map of proposed closure

Prepared By: 
Gail Reeves
Street Activities Coordinator

Endorsed By: 
Andy Scotland
GM Strategic Events



DATA STATEMENT
 Property boundaries
 Land Information NZ
 Licence W/10/0354702
 Crown Copyright reserved
 Accuracy in urban areas: +/- 30m

Orthorectified satellite
 composite from
 various commercial
 satellite imagery
 Accuracy in rural areas: +/- 30m

Topographic data
 Wellington City Council
 NZCC copyright reserved
 Accuracy: +/- 30m

Island Bay Festival: Ribble Street Races
Road Closures - From 8am - 4.30pm
Saturday 12th February 2011

1:2,000

Absolutely POSITIVELY
 MY HEART IS POWER
 WELLINGTON CITY COUNCIL **Wellington**



 Proposed Temporary Road Closures

DATA STATEMENT
 Property boundaries
 Land Information NZ
 License: WAI0365470
 Crown Copyright reserved
 Accuracy in urban areas: +/- 30m
 Accuracy in rural areas: +/- 30m

Other data has been
 compiled from
 various sources and
 is not necessarily
 accurate

Topographic data
 Wellington City Council
 WCC copyright reserved
 Accuracy: +/- 30m

Copyright © 2011
 Wellington City Council
 All rights reserved

Island Bay Festival: Day at the Bay
Road Closures - From 6am - 6pm
Sunday 13th February 2011

1:2,000

Absolutely
POSITIVELY
 HE HEKE AT PŌKEKE
 WELLINGTON CITY COUNCIL **Wellington**

**PROPOSED TEMPORARY ROAD CLOSURE
IMPACT REPORT:**

**WELLINGTON CHINESE NEW YEAR STREET PARADE
SUNDAY 13 FEBRUARY 2011**

1. Description of Event

The annual Chinese New Year Festival began in 2002 and now runs over eight days and has six main events, with an estimated audience of over 20,000 people. The parade is a major part of the celebrations and begins at Courtenay Place and culminates at Frank Kitts Park. Organised by the Asian Events Trust, the organisers do not require a closure for the parade itself, but do require a safe assembly area for the performers. It is therefore proposed to close **Tennyson Street** (between Tory Street and Cambridge Terrace), to vehicle traffic, from 9am to 2.30pm on Sunday 13 February 2011. The parade starts at 2pm via Tennyson Street, Cambridge Terrace, Courtenay Place, Taranaki Street and on to the Taranaki Street wharf. The parade is to be carried out on an open road under a temporary traffic management plan - the details of which will be approved by a suitably qualified Council officer in charge of traffic.

Road closure notification signs will be placed at each end of the closure at least one week prior to the event. Residents and local businesses will receive a letter drop advising them of the road closure and the parking restrictions. The closure is also to be advertised in the Our Wellington Page of the Dominion Post in the week preceding the parade. The event is to be traffic managed by a professional traffic management company and emergency services will have immediate access to the area if required.

2. Rugby World Cup and Events Directorate Support

The Chinese New Year celebrations are a significant cultural festival in the city and the parade is now an annual event. This event is supported by the Events Directorate.

3. Proposal Notice and Consultation

The public notice that the Council was proposing to consider this closure was published in the following newspaper:

- Dominion Post Saturday 20 November 2010

The New Zealand Police and the Ministry of Transport have also been consulted with.

4. Objections

No objections were received in response to the proposal notice.

5. Traffic Impact Assessment

Prior Closures

None of the proposed closures for this event will result in a road being closed for an aggregate of more than 31 days in any year.

Traffic Impact

In the opinion of Soon Teck Kong, Manager Transport Network, acting as the Council's Traffic Engineer, the proposed closure, if implemented according to the plans provided, is not likely to impede traffic unreasonably subject to the conditions listed below. However, the Council reserves the right to modify this opinion at any time. If, in the opinion of the Council, the closure may or does impede traffic unreasonably, any approval granted by the Regulatory Processes Committee may be revoked and the event organiser may be required to open the road at the direction of a suitably qualified Council officer in charge of traffic.

Conditions:

- The event organiser is to notify the public via newspaper advertisement, letter drop, advanced signage and media releases.
- The event organiser is to obtain Council approval on the details of the traffic management plan prior to the event (in particular the Tennyson Street closure).
- The event organiser is responsible for safety (pedestrian and traffic) within the closed area.
- The event organiser is to provide marshals at all road closures ends to ensure that public safety (interaction of traffic and spectators) is not compromised.


Signed:.....

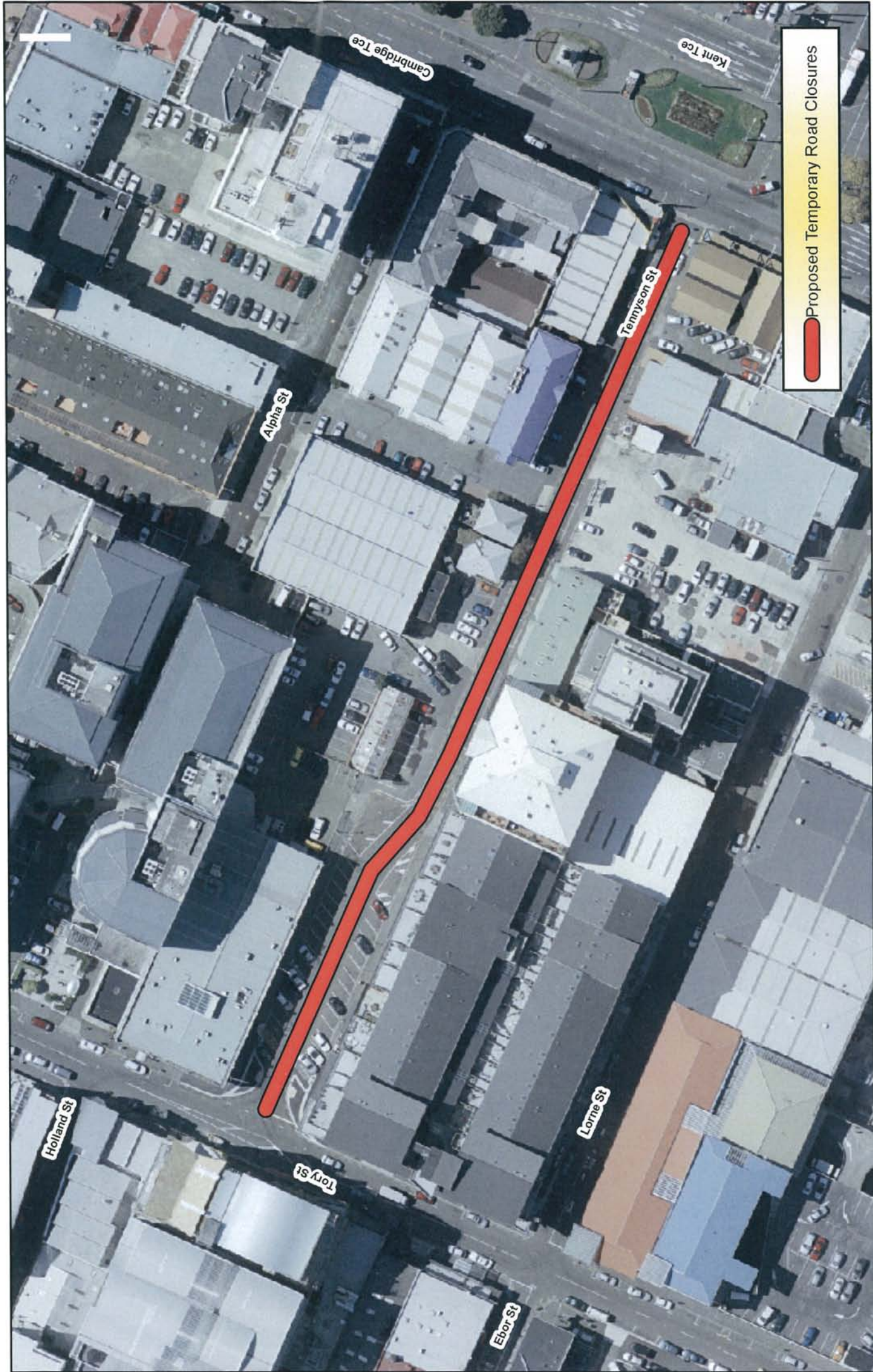

Soon Teck Kong
Manager Transport Network

ATTACHMENTS

- Copy of proposal notice from the newspaper
- Map of proposed closure

Prepared By: 
Gail Reeves
Street Activities Coordinator

Endorsed By: 
Andy Scotland
GM Strategic Events



The Wellington Chinese New Year Street Parade
Road Closures - Sunday 13th February 2011.
From 9am to 2:30pm. (Parade assembly only)

Absolutely
POSITIVELY
 Wellington
 Business (The Council)

© Crown Copyright 2011
 All rights reserved
 Licensed under the Creative Commons Attribution-NonCommercial-ShareAlike license
 Accuracy not guaranteed - © 2011
 Prepared by: [unreadable]
 Checked by: [unreadable]
 Approved by: [unreadable]
 Date: [unreadable]
 Version: [unreadable]
 Any other use is prohibited
 Wellington City Council
 Wellington, New Zealand
 Accuracy: ± 20m

**PROPOSED TEMPORARY ROAD CLOSURE
IMPACT REPORT:**

**WILD WELLINGTON MOUNTAIN BIKE RELAY EVENT
SATURDAY 19 FEBRUARY 2011**

1. Description of Event

It is proposed to hold, for the fourth time, the Wild Wellington Mountain Bike Relay event. This is a Wellington City Council Events Directorate sponsored event that includes single track and down-hill mountain bike relays around Mt Victoria. It is therefore proposed to close **Alexandra Road**, to vehicle traffic, from Constable Street to a point just before the access road to the Mt Victoria Lookout, on Saturday 19 February 2011, from 8am to 10pm.

The road will be closed at both ends with barriers and suitable signage and marshals in accordance with a Council approved Traffic Management Plan. Pedestrian and walker access will be controlled via marshalled crossing points - also as detailed in the Traffic Management Plan. Emergency vehicles will be given immediate access if required.

Affected residents and businesses will be notified by letter drop at least two weeks prior to the event and, if necessary, actions taken to assist them. The Bus and Coach Association and known tour companies will be informed of the proposal and it's affect on Alexandra Road. Road closure notification boards will be placed at each end of the closure at least one week prior to the event and the road closures will be advertised in the Our Wellington Page of the Dominion Post the Tuesday before the event.

2. Rugby World Cup and Events Directorate Support

Wild Wellington is once again supported by the City Events Business Unit in 2011. The Events Directorate have granted event funding to a total of \$5,000.00. On top of this funding City Events will coordinate and pay for the road closure signage and have dedicated a staff member to work with the event organisers to ensure a smooth and successful event. Wild Wellington continues to actively promote the Mt Victoria area as a challenging location for mountain biking events and helps to raise the profile of the city as a destination for participation events.

3. Proposal Notice and Consultation

The public notice that the Council was proposing to consider this closure was published in the following newspaper:

- Dominion Post Saturday 20 November 2010

The New Zealand Police and the Ministry of Transport have also been consulted with.

4. Objections

No objections were received in response to the proposal notice.

5. Traffic Impact Assessment

Prior Closures

None of the proposed closures for this event will result in a road being closed for an aggregate of more than 31 days in any year.

Traffic Impact

In the opinion of Soon Teck Kong, Manager Transport Network, the proposed closure, if implemented according to the plans provided, is not likely to impede traffic unreasonably. However, the Council reserves the right to modify this opinion at any time. If, in the opinion of the Council, the closure may or does impede traffic unreasonably, any approval granted by the Regulatory Processes Committee may be revoked and the event organiser may be required to open the road at the direction of a suitably qualified Council officer in charge of traffic.

Conditions:

- The event organiser is to ensure that the event is publicised via media releases and notification signs to inform the public of the road closures.
- The event organiser is to consult and gain approval from the emergency services on the road closure and provide access for emergency vehicles.
- The locations prior to the road closure ends are to be kept clear for safe and adequate turning facilities for traffic.
- Additional signage at Constable Street and information to advise motorists to use an alternate route to the Lookout via Hawker Street.

Signed:.....



Soon Teck Kong
Manager Transport Network

ATTACHMENTS

- Copy of proposal notice from the newspaper
- Map of proposed closure

Prepared By:


Gail Reeves
Street Activities Coordinator

Endorsed By:


Andy Scotland
GM Strategic Events



 Proposed Temporary Road Closure

DATA STATEMENT
 Property boundaries
 Land Information NZ
 Licence WMO035472
 Crown Copyright reserved
 Accuracy in urban areas +/-1m
 Accuracy in rural areas +/-30m

Other data has been
 compiled from a
 variety of sources and
 its accuracy may vary

Any contours displayed
 are only approximate
 and must not be used for
 detailed engineering design

Wild Wellington Mountain Bike Relay: Proposed Temporary Road Closure Sat 19 Feb 11

**Absolutely
 POSITIVELY
 WELLINGTON**
 WE HERE BY POWER
 WELLINGTON CITY COUNCIL

**PROPOSED TEMPORARY ROAD CLOSURE
IMPACT REPORT:**

**ST ANTHONY'S SCHOOL & PARISH BAZAAR –
SATURDAY 19 FEBRUARY 2011**

1. Description of Event

The Co-ordinators of the biennial St Anthony's School and Parish Bazaar have applied for a road closure to enable them to hold their event. The school has very small grounds and wants to use the extra space in Ludlam Street for entertainment stalls and activities. The organisers have successfully run seven previous bazaars. The proposed closure, to vehicle traffic, is of **Ludlam Street** (between Ferry Street to Falkirk Avenue), on Saturday 19 February 2011, from 10am to 4pm.

Road closure notification boards will be placed at each end of the closure at least one week prior to the event. Residents will receive a letter drop advising them of the event and the road closure. The event is also to be advertised by an Our Wellington Page advertisement in the Dominion Post in the week preceding the bazaar.

The event is to be traffic managed according to a Council approved Traffic Management Plan. Emergency services will have immediate access to the area if required.

2. Rugby World Cup and Events Directorate Support

The Events Directorate has no connection with and no objection to this event.

3. Proposal Notice and Consultation

The public notice that the Council was proposing to consider this closure was published in the following newspaper:

- Dominion Post Saturday 20 November 2010

The New Zealand Police and the Ministry of Transport have also been consulted with.

4. Objections

No objections were received in response to the proposal notice.

5. Traffic Impact Assessment

Prior Closures

None of the proposed closures for this event will result in a road being closed for an aggregate of more than 31 days in any year.

Traffic Impact

In the opinion of Soon Teck Kong, Manager Transport Network, acting as the Council's Traffic Engineer, the proposed closure, if implemented according to the plans provided, is not likely to impede traffic unreasonably subject to the conditions below. However, the Council reserves the right to modify this opinion at any time. If, in the opinion of the Council, the closure may or does impede traffic unreasonably, any approval granted by the Regulatory Processes Committee may be revoked and the event organiser may be required to open the road at the direction of a suitably qualified Council officer in charge of traffic.

Conditions:

- The event organiser is to provide a detailed Traffic Management Plan approved by Council prior to the event.
- A detour route is to be provided due to the road closure.
- The event organiser is to publicly notify the event via letter drop, local newspaper advertisement, advanced signage and media releases.
- The event organiser is to ensure that the emergency services (Police, Fire and Ambulance Services) have been consulted with and that the Traffic Management Plan includes all of their specific requirements.
- The event organiser is to ensure that the affected residents along the road closure are consulted with.
- The event organiser is responsible for safety (pedestrian and traffic) within the closed road area and at the road closure ends.

Signed:.....



Soon Teck Kong
Manager Transport Network

ATTACHMENTS

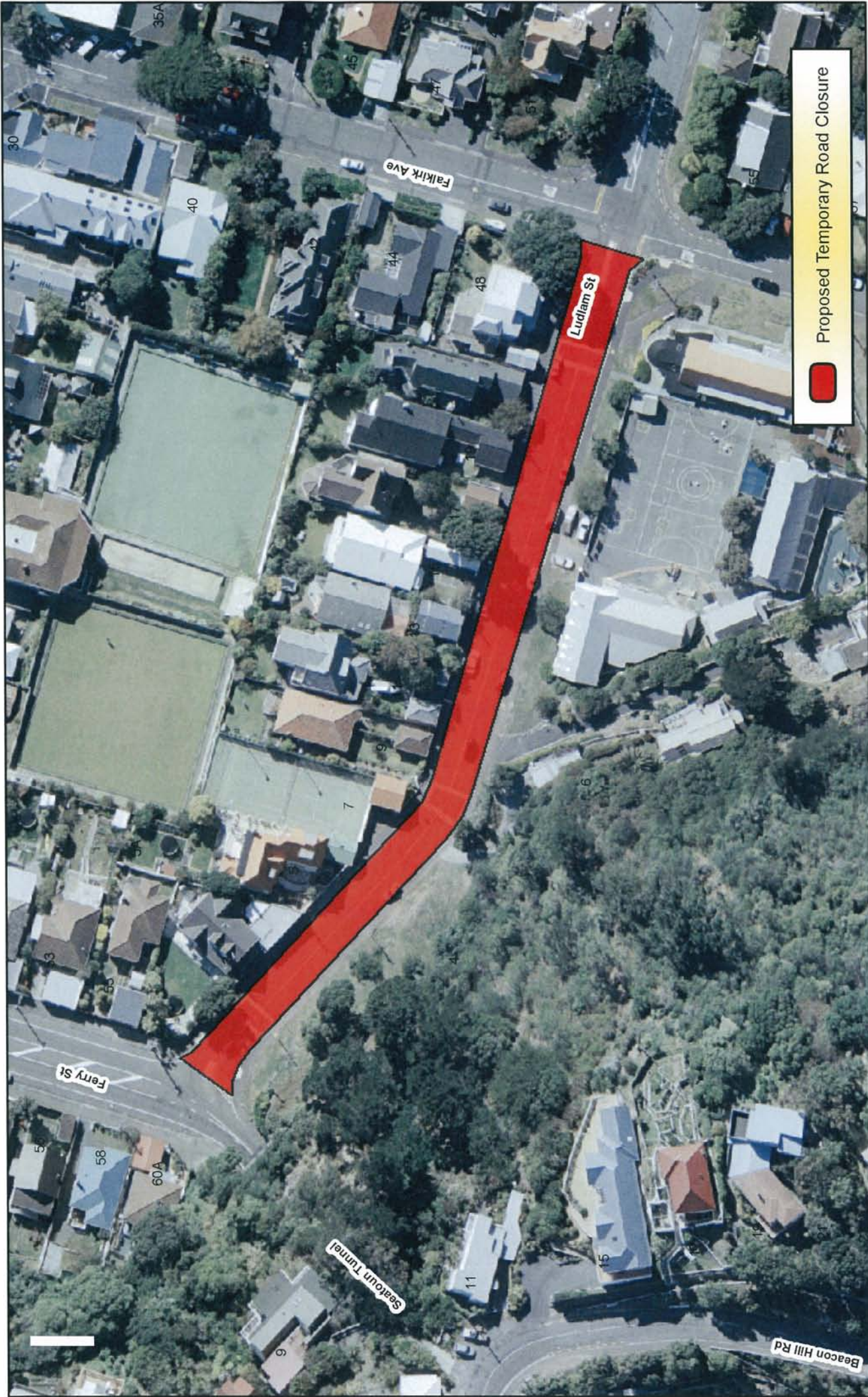
- Copy of proposal notice from the newspaper
- Map of proposed closure

Prepared By:


Gail Reeves
Street Activities Coordinator

Endorsed By:


Andy Scotland
GM Strategic Events



St Anthony's School & Parish Bazaar Temporary Road Closure Sat 19th Feb 11

**Absolutely
POSITIVELY
Wellington**
ME HERE KI PŌHERE
WELLINGTON CITY COUNCIL

DATA STATEMENT
Property boundaries
are shown for information only.
Licence W100555272
Crown Copyright reserved
Accuracy in urban areas ±1.1m
Accuracy in rural areas ±1.50m

Topographic data
Wellington City Council
Licence W100555272
Accuracy ±1.30m

Other data has been
supplied for information only.
variety of sources and
its accuracy may vary

Any contours displayed
are only approximate
for information only.
detailed engineering design

Colby Orthoretopography 1:500
Licence W100555272
Wellington City Council

PROPOSED TEMPORARY ROAD CLOSURE IMPACT REPORT:

ROUND THE BAYS FUN RUN – SUNDAY 20 FEBRUARY 2011

1. Description of Event

Sport Wellington has applied to hold the annual Round the Bays Fun Run – now called the “AMI Round the Bays and New Balance Half Marathon” in 2011. The proposed event is similar to the 2010 event - starting at Frank Kitts Park and finishing at Kilbirnie Park. It also includes, for the third time, a half-marathon event to Scorching Bay, which then returns to the Kilbirnie Park finish. The whole event is strongly supported by an average of 10,000 people each year, with a broad cross section of the community running and walking the course.

The proposed road closures, to vehicle traffic, are for Sunday 20 February 2011 of **Customhouse Quay** (all southbound lanes from Whitmore Street to Jervois Quay), from 7am to 11am; **Jervois Quay** (all southbound lanes from Customhouse Quay to Cable Street), from 7am to 11am; **Cable Street** (Jervois Quay to Oriental Parade, 7am to 11am, right hand lane open from Chaffers Street to Kent Terrace); **Oriental Parade** (all of Oriental Pde), from 8.20am to 11am; **Evans Bay Parade** (all of Evans Bay Parade), from 8.20am to 11:30am; **Wellington Road** (one-way between Crawford Rd and Ruahine Street), 8.30 to 11.30am; **Shelly Bay Road** (all of Shelly Bay Road), 8.45am to 12noon; **Massey Road** (Shelly Bay Road to Point Gordon), 8.45am to 12noon. In addition, State Highway 1 Cobham Drive from the Wellington Road/Hamilton Road intersection to Troy Street roundabout will be closed from 8.30am to 11.30am. Arterial roads adjoining Oriental Parade and Evans Bay Parade will be affected by the closures, as will intersections adjoining the State Highway at Taurima Street, Goa Street, Moxham Avenue and Ruahine Street. Alternative entry routes to Hataitai will be provided at the Hamilton Road/Wellington Road intersection and via Roseneath/Mt Victoria. As some of these closures affect the State Highway, they require a separate approval from NZTA. As in previous years, the closures will remain in place for the minimum period, with the roads being opened at the earliest, safe time.

There will be areas designated as “No Stopping” to assist with the finish set-up and the diverted traffic flow around Kilbirnie Park and the general Kilbirnie area. Notification signs will be placed at points along the proposed closures at least one week prior to the event advising of the road closures and the parking restrictions. Residents and local businesses will also receive a letter drop advising them of the road closures and parking restrictions. The closures will be

advertised in the Our Wellington Page of the Dominion Post in the week preceding the event. The event is to be traffic managed by professional traffic management companies and emergency services will have immediate access to the area if required.

2. Rugby World Cup and Events Directorate Support

This is an annual event organised by Sport Wellington and is supported by the Events Directorate.

3. Proposal Notice and Consultation

The public notice that the Council was proposing to consider this closure was published in the following newspaper:

- Dominion Post Saturday 20 November 2010

The New Zealand Police and the Ministry of Transport have also been consulted with.

4. Objections

No objections were received in response to the proposal notice.

5. Traffic Impact Assessment

Prior Closures

None of the proposed closures for this event will result in a road being closed for an aggregate of more than 31 days in any year.

Traffic Impact

In the opinion of Soon Teck Kong, Manager Transport Network, acting as the Council's Traffic Engineer, the proposed closure, if implemented according to the plans provided, is likely to impede traffic flows on several major routes. The proposed conditions below will mitigate some of the expected traffic congestion during the road closures. The expected congestion during the road closures is part of facilitating a public event and ensuring safety for the general public. However, the Council reserves the right to modify this opinion at any time. If, in the opinion of the Council, the closure may or does impede traffic unreasonably, any approval granted by the Regulatory Processes Committee may be revoked and the event organiser may be required to open the road at the direction of a suitably qualified Council officer in charge of traffic.

Conditions:

- The event organiser is to publicly notify the event via letter drop, newspaper advertisement, advanced signage and media releases.

- The event organiser is to ensure that the emergency services (Police, Fire and Ambulance Services) have been consulted with and that the Traffic Management Plan includes all of their specific requirements.
- The event organiser is to ensure that the affected property owners and businesses along the road closure are consulted with.
- The event organiser is to provide marshals at all road closure ends to ensure that public safety (interaction of traffic and spectators) is not compromised.
- The event organiser is to work with the public transport operators to provide alternative public transport route and bus stops.
- Detour routes are to be provided with adequate signage during the road closure period.
- The event organiser is to provide the Wellington City Council with a separate detailed Traffic Management Plan for the diverted State Highway traffic onto City Council streets in particular Kilbirnie Crescent, Rongotai Road and Troy Street. The management of the diverted traffic onto City Council streets will remain solely in the control of the Wellington City Council instead of the New Zealand Transport Agency.
- The event organiser is to ensure safe and reasonable access for affected parties and have regular updates and contact with on-site marshals and City Council representatives.
- The event organiser is to provide further details of the Traffic Management Plan to Council for approval prior to the event.

Signed: 


Soon Teck Kong
Manager Transport Network

ATTACHMENTS

- Copy of proposal notice from the newspaper
- Map of proposed closure

Prepared By: 

Gail Reeves
Street Activities Coordinator

Endorsed By: 

Andy Scotland
GM Strategic Events



Proposed Temporary Road Closures

Proposed Road Closure Times

Customhouse Quay (all south bound Lanes) from 7am to 11am.
 Jervois Quay (all south bound lanes) from 7am to 11am.
 Cable Street (with right hand lane open from Chaffers St) from 7am to 11am.
 Oriental Parade from 8.20am to 11am.
 Evans Bay Parade from 8.20am to 11.30am.
 Wellington Road (Between Crawford Rd & Ruahine St) from 8.30 to 11.30am.
 Shelly Bay Road from 8.45am to 12noon.
 Massey Road (between Shelly Bay Rd and Point Gordon) from 8.45am to 12noon.

Absolutely
POSITIVELY
 Wellington
the heart of the project
 Wellington City Council

2011 Wellington Round the Bays Fun Run

Sunday 20 Feb 2011

© Crown Copyright 2011
 Produced by the Wellington City Council
 All rights reserved
 Wellington City Council
 Wellington, New Zealand
 04-499-0900
 www.wcc.govt.nz

PROPOSED TEMPORARY ROAD CLOSURE IMPACT REPORT:

MT VICTORIA INNER CITY FESTIVAL – SATURDAY 26 FEBRUARY 2011

1. Description of Event

The New Crossways Community Trust, following two years at this location, is now planning the 2011 Mt Victoria Inner City Festival. The Trust state that “this is a festival for residents of Mt Victoria, surrounding suburbs and the CBD to build and develop community relationships by providing a community event for people to get to know their neighbours through learning about sustainable and organic ways to live, and to promote the community facility on Roxburgh Street. The festival headquarters will be at the centre, with the festival theme centred on sustainability. Workshops, entertainment and stallholders will be organised to promote and celebrate this”.

The proposed road closures, to vehicle traffic only, are of **Roxburgh Street** (Majoribanks Street to number 27 Roxburgh Street) and **Caroline Street** (the whole of Caroline Street), on Saturday 26 February 2011, from 8am to 5pm (postponement date Sunday 27 February 2011). Vehicle traffic accessing the Bay Plaza Hotel car-park will not be affected. Alternative car parking arrangements for other affected residents will be arranged by the organisers at pre-arranged close-by locations. The Trust plan to only use the entire closure area if needed and if, following registrations, they need less space then they plan to reduce the area and notify residents.

Road closure notification signs will be placed at each end of the closures at least one week prior to the event. The event will also be advertised in the Our Wellington Page of the Dominion Post on the Tuesday before the event. The event is to be traffic managed by a professional traffic management company and emergency services will have immediate access to the area if required.

2. Rugby World Cup and Events Directorate Support

The Events Directorate has no connection with and no objection to this event.

3. Proposal Notice and Consultation

The public notice that the Council was proposing to consider this closure was published in the following newspaper:

- Dominion Post Saturday 20 November 2010

The New Zealand Police and the Ministry of Transport have also been consulted with.

The Community Trust has entered into consultation with affected local residents and is planning the following notifications: Two flyer drops to residents and businesses within the affected area; the Mt Victoria Residents Association has confirmed support; a notice will be placed in the December Mt Victoria Newsletter and a Public Meeting, to discuss residential concerns, has been called for 7.30pm on Thursday 9 December 2010.

4. Objections

No objections were received in response to the proposal notice.

5. Traffic Impact Assessment

Prior Closures

None of the proposed closures for this event will result in a road being closed for an aggregate of more than 31 days in any year.

Traffic Impact

In the opinion of Soon Teck Kong, Manager Transport Network, acting as the Council's Traffic Engineer, the proposed closure, if implemented according to the plans provided, is not likely to impede traffic unreasonably subject to the conditions below. However, the Council reserves the right to modify this opinion at any time. If, in the opinion of the Council, the closure may or does impede traffic unreasonably, any approval granted by the Regulatory Processes Committee may be revoked and the event organiser may be required to open the road at the direction of a suitably qualified Council officer in charge of traffic.

Conditions:

- The event organiser is to provide a Traffic Management Plan approved by Council prior to the event
- The event organiser is to publicly notify the event via letter drop, newspaper advertisement, advanced signage and media releases.
- The event organiser is to ensure that the emergency services (Police, Fire and Ambulance Services) have been consulted with and that the Traffic Management Plan includes all of their specific requirements.
- Residents affected by the road closures (in particular on Roxburgh Street, Prince Street and McFarlane Street) are consulted with and advised to

use the alternate access route via Hawker Street. This is to be adequately signed as part of the Traffic Management Plan.

- Alternative car-parking, for affected parties, are to be arranged as part of the Traffic Management Plan.

Signed: 


Soon Teck Kong
Manager Transport Network

ATTACHMENTS

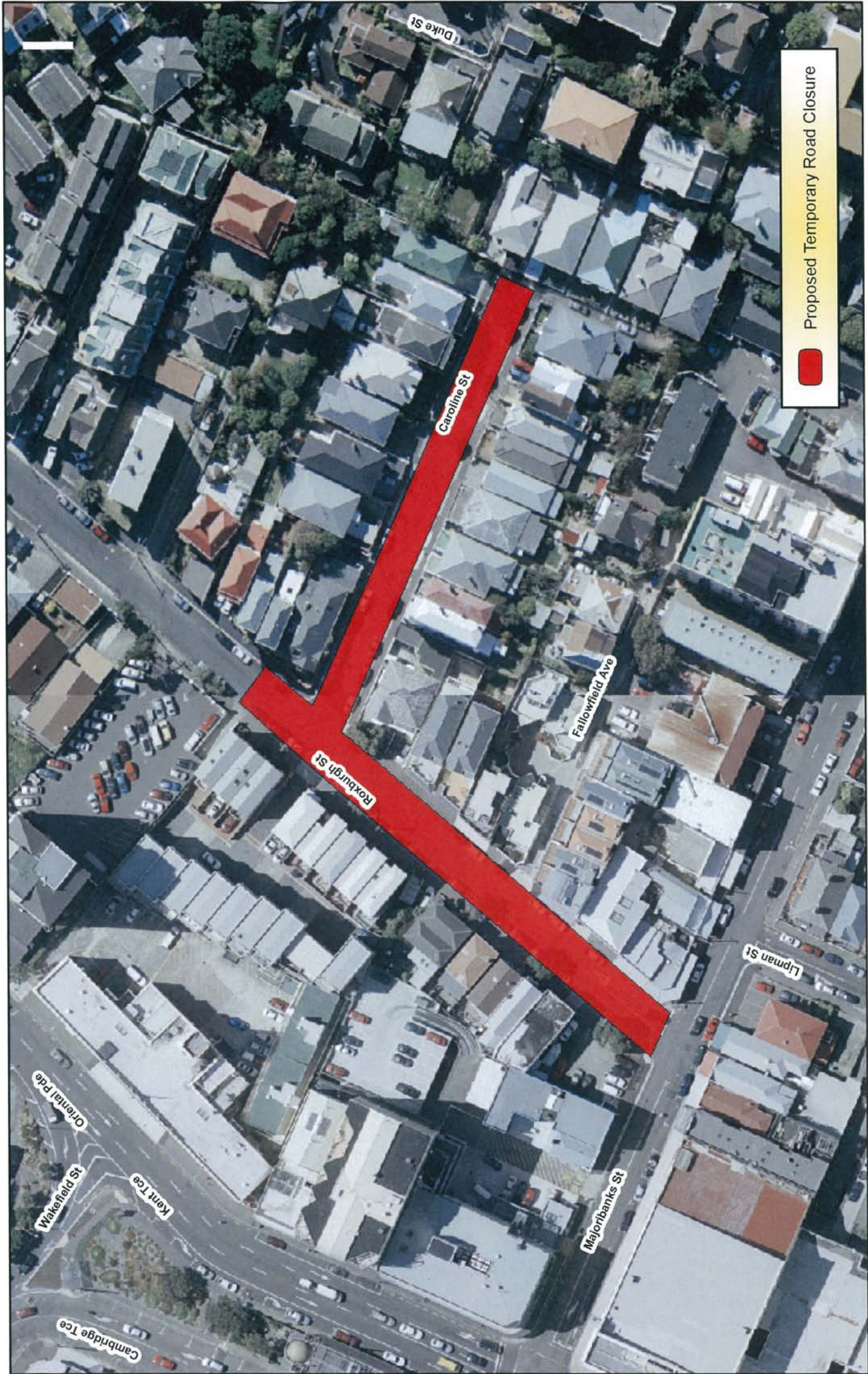
- Copy of proposal notice from the newspaper
- Map of proposed closure

Prepared By: 

Gail Reeves
Street Activities Coordinator

Endorsed By: 

Andy Scotland
GM Strategic Events



Proposed Temporary Road Closure



Absolutely
Positively
Wellington
By Heart & Home
Wellington City Council

Mt Victoria Inner City Festival
Saturday 26th February, from 8am to 5pm
(Sunday 27th February if postponed for bad weather)

© Crown Copyright 2018
All rights reserved
This information is provided for general information only and is not intended to be used for any other purpose.
Accuracy in urban areas: +/- 3m
Accuracy in rural areas: +/- 5m

© Crown Copyright 2018
All rights reserved
This information is provided for general information only and is not intended to be used for any other purpose.
Accuracy in urban areas: +/- 3m
Accuracy in rural areas: +/- 5m

PROPOSED TEMPORARY ROAD CLOSURE IMPACT REPORT:

NEWTOWN FESTIVAL FAIR DAY – SUNDAY 6 MARCH 2011

1. Description of Event

The annual festival and fair is a successful community event attracting very large crowds. The event in 2011 will see the fair celebrating its fifteenth year. The proposed road closures, to vehicle traffic only, are for Sunday 6 March 2011, from 6am to 8pm on **Riddiford Street** (Mein Street to a point just south of Donald McLean Street); **Rintoul Street** (Riddiford Street to Colombo Street); **Constable Street** (Riddiford Street to Daniell Street); **Emmett Street** (all); **Green Street** (all); **Wilson Street** (for approximately 80 metres east off Riddiford Street – closure extended to 9.30pm for late entertainment and stage breakdown); **Newtown Avenue** (for approximately 80 metres east off Riddiford Street); **Normanby Street** (for approximately 80 metres east off Riddiford Street); **Donald McLean Street** (for approximately 5 metres east off Riddiford Street). Parking restrictions are proposed on the above and some surrounding streets. A one-way system for eastern and some southern bus services will operate on Daniell Street and Owen Street via Mein Street, which remains two-way at all times. Buses to and from Island Bay will be diverted to the number 4 route which runs via Adelaide Road.

Road closure notification signs will be in place at least one week prior to the event, as well as electronic variable message boards on the day. Residents and local businesses will receive a letter drop advising them of the event, the road closures and the parking restrictions. The event is also extensively advertised by posters in local shops, a variety of other media and by an advertisement in the Our Wellington Page of the Dominion Post in the week preceding the fair. The event is to be traffic managed by a professional traffic management company and emergency services will have immediate access to the area if required. Public transport operators have been notified and consulted with concerning the road closures. It is proposed that the familiar temporary bus stops and detour routes can be in place.

2. Rugby World Cup and Events Directorate Support

The Newtown Festival is a long running community event and is regarded as the most successful festival of its type in the city. Wellington City Council provides support for the event through a community Festivals Grant and additional funding from the Events Directorate.

3. Proposal Notice and Consultation

The public notice that the Council was proposing to consider this closure was published in the following newspaper:

- Dominion Post Saturday 20 November 2010

The New Zealand Police and the Ministry of Transport have also been consulted with.

4. Objections

No objections were received in response to the proposal notice.

5. Traffic Impact Assessment

Prior Closures

None of the proposed closures for this event will result in a road being closed for an aggregate of more than 31 days in any year.

Traffic Impact

In the opinion of Soon Teck Kong, Manager Transport Network, acting as the Council's Traffic Engineer, the proposed closure, if implemented according to the plans provided, is likely to impede traffic flows on several major routes. The proposed conditions below will mitigate some of the expected traffic congestion during the road closures. The expected congestion during the road closures is part of facilitating a public event and ensuring safety for the general public. However, the Council reserves the right to modify this opinion at any time. If, in the opinion of the Council, the closure may or does impede traffic unreasonably, any approval granted by the Regulatory Processes Committee may be revoked and the event organiser may be required to open the road at the direction of a suitably qualified Council officer in charge of traffic.

Conditions:

- The event organiser is to publicly notify the event via letter drop, newspaper advertisement, advanced signage and media releases.
- The event organiser is to ensure that the emergency services (Police, Fire and Ambulance Services) have been consulted with and that the Traffic Management Plan includes all of their specific requirements.
- The event organiser is to ensure that the affected property owners and businesses along the road closure are consulted with and access options are arranged for affected parties.
- The event organiser is to provide marshals at all road closure ends to ensure that public safety (interaction of traffic and spectators) is not compromised (in particular the road closures at the ends of Riddiford Street, Constable Street and Rintoul Street).
- Detour routes are to be provided and clearly signed during the road closure period.

- The event organiser is to work with the public transport operators to provide alternative public transport routes and bus stops.
- The event organiser is to provide further details of the Traffic Management Plan to Council for approval prior to the event.
- The event organiser is to provide Variable Message Signs at major routes to advise drivers of the road closures, in particular routes between the CBD and the Airport and the Regional Hospital.

Signed: 


Soon Teck Kong
Manager Transport Network

ATTACHMENTS

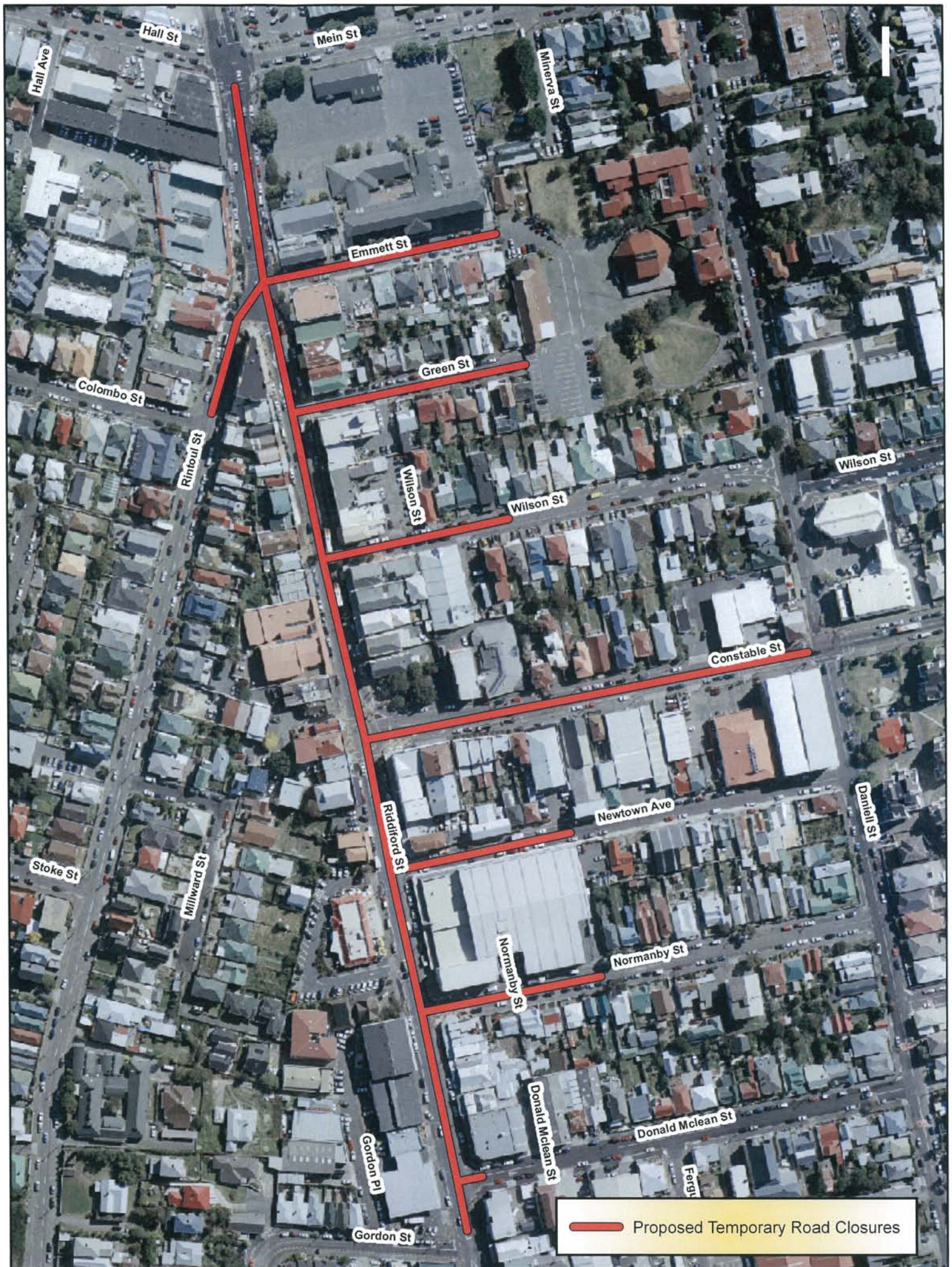
- Copy of proposal notice from the newspaper
- Map of proposed closure

Prepared By: 

Gail Reeves
Street Activities Coordinator

Endorsed By: 

Andy Scotland
GM Strategic Events



 Proposed Temporary Road Closures

DATA STATEMENT
 Property boundaries
 Land Information NZ
 License: M100035410
 Crown Copyright reserved
 Accuracy in urban areas: +/- 3m
 Accuracy in rural areas: +/- 30m

Other data has been
 compiled from
 various sources
 (e.g. aerial imagery)

Copyright © 2011
 Wellington City Council
 WCC copyright reserved
 Accuracy: +/- 30m

All content is the
 property of
 Wellington City Council
 and is not to be
 reproduced or
 distributed in any
 form without the
 express written
 permission of
 Wellington City Council

Copyright © 2011
 Wellington City Council
 WCC copyright reserved
 Accuracy: +/- 30m

Newtown Festival Fair Day

Road Closures - 6am to 8pm

Sunday 6th March 2011

Absolutely POSITIVELY
 THE HEART & SOUL OF WELLINGTON CITY COUNCIL **Wellington**

PROPOSED TEMPORARY ROAD CLOSURE IMPACT REPORT:

KILBIRNIE FESTIVAL FAIR DAY – SUNDAY 13 MARCH 2011

1. Description of Event

Martin Wilson, on behalf of the Kilbirnie Festival Committee, has requested the closure of **Bay Road**, between Coutts Street and Rongotai Road, to vehicle traffic only, for the purpose of the annual Festival Fair Day on Sunday 13 March 2011, from 6am to 6pm. The Kilbirnie Festival is a community based event that raises funds for the Kilbirnie/Lyall Bay Community Centre.

Road closure notification boards will be placed at each end of the closure at least one week prior to the event. Residents and local businesses will receive a letter drop advising them of the event and the road closure. The event is also to be advertised in the Our Wellington Page of the Dominion Post in the week preceding the festival.

The event is to be traffic managed by the same professional traffic management company as previous years. Emergency services will have immediate access to the area if required.

2. Rugby World Cup and Events Directorate Support

The Events Directorate has no objection to this event.

3. Proposal Notice and Consultation

The public notice that the Council was proposing to consider this closure was published in the following newspaper:

- Dominion Post Saturday 20 November 2010

The New Zealand Police and the Ministry of Transport have also been consulted with.

4. Objections

No objections were received in response to the proposal notice.

5. Traffic Impact Assessment

Prior Closures

None of the proposed closures for this event will result in a road being closed for an aggregate of more than 31 days in any year.

Traffic Impact

In the opinion of Soon Teck Kong, Manager Transport Network, acting as the Council's Traffic Engineer, the proposed closure, if implemented according to the plans provided, is not likely to impede traffic unreasonably subject to the conditions listed below. However, the Council reserves the right to modify this opinion at any time. If, in the opinion of the Council, the closure may or does impede traffic unreasonably, any approval granted by the Regulatory Processes Committee may be revoked and the event organiser may be required to open the road at the direction of a suitably qualified Council officer in charge of traffic.

Conditions:

- The event organiser is to notify the public via newspaper advertisement, letter drop, advanced signage and media releases.
- The event organiser is to provide a detour route between Rongotai Road and Coutts Street with adequate signage.
- The event organiser is responsible for safety (in particular pedestrian and traffic interactions) within the closed road area.
- Pedestrian movements at the intersections of Bay Road/Coutts Street and Bay Road/Rongotai Road are to be safely managed and controlled.

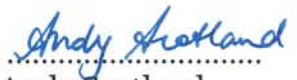
Signed:.....

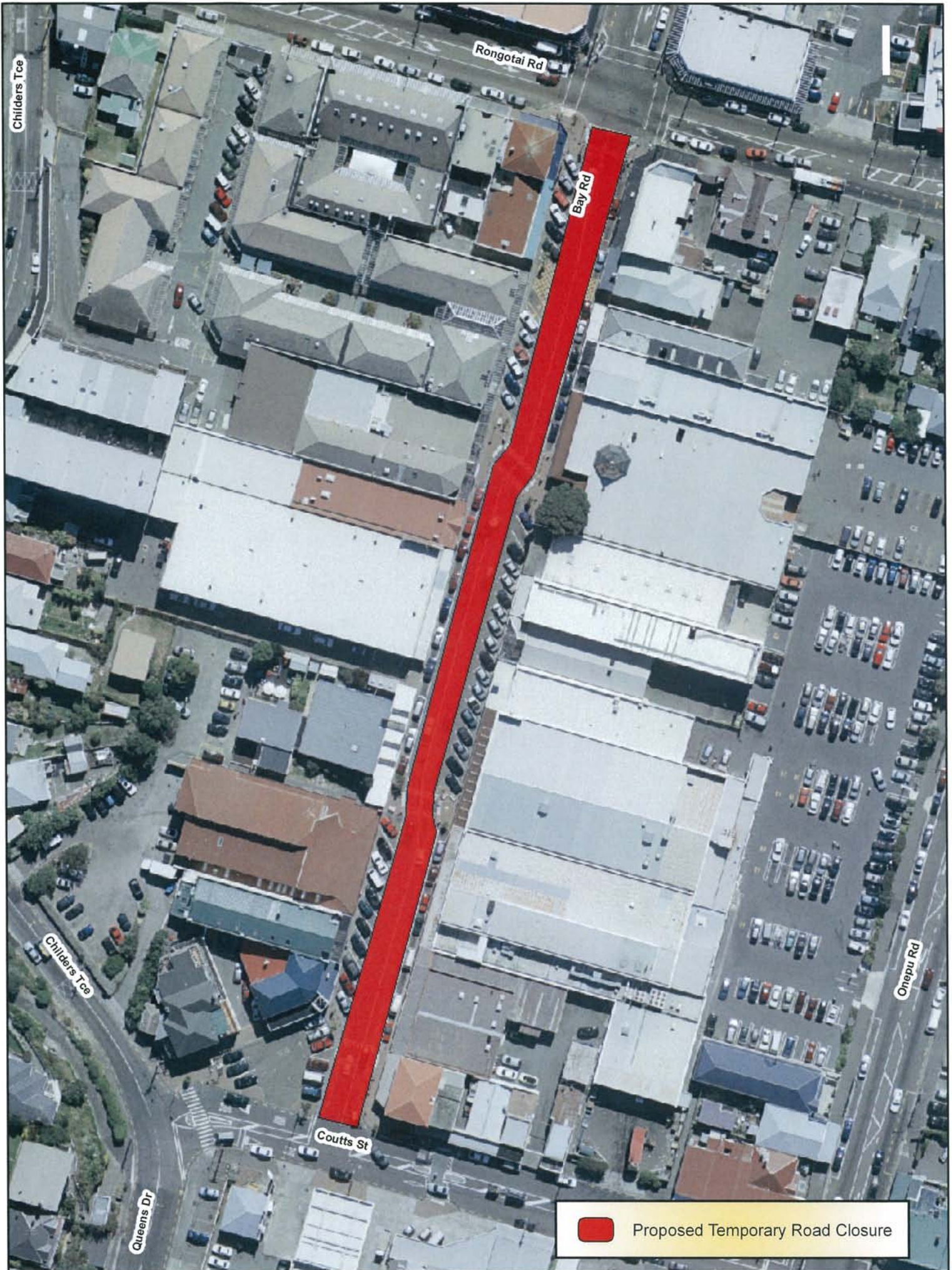
Soon Teck Kong
Manager Transport Network

ATTACHMENTS

- Copy of proposal notice from the newspaper
- Map of proposed closure

Prepared By: 
Gail Reeves
Street Activities Coordinator

Endorsed By: 
Andy Scotland
GM Strategic Events



DATA STATEMENT
 Property boundaries
 Land Information NZ
 License W100000000
 Crown Copyright reserved
 Accuracy in urban areas: +/- 30m

Other data has been
 compiled from
 various sources and
 is not guaranteed
 to be accurate

Topographic data
 Wellington City Council
 NZC Copyright reserved
 Accuracy +/- 30m

Kilbirnie Festival Fair Day

Road Closures - 6am to 6pm

Sunday 13th March 2011

Absolutely POSITIVELY
 WE BELIEVE IN POWER Wellington
 WELLINGTON CITY COUNCIL

**PROPOSED TEMPORARY ROAD CLOSURE
IMPACT REPORT:**

**WELLINGTON CAR CLUB ALEXANDRA ROAD
HILLCLIMB – SUNDAY 20 MARCH 2011**

1. Description of Event

The Wellington Car Club (Inc) has once again applied to run this annual event. The event is sanctioned by Motorsport New Zealand and run under their approval by way of an Event Organisers Permit. The event has been carried out on this section of road, as advised by the Club, since the 1960's. It is proposed to close **Alexandra Road** (between Constable Street and the Lookout Road), to vehicle traffic – with closure points being as in the past at the intersections of Constable Street, Upoko Road and Lookout Road, on Sunday 20 March 2011, from 7am to 6pm. Pedestrian and walker access will be controlled via marshalled crossing points, as detailed in the Traffic Management Plan.

Road closure notification boards will be placed at each end of the closure at least one week prior to the event. Residents and local sports clubs will receive a letter drop advising them of the event and the road closures. The Bus and Coach Association and known tour companies will be informed of the proposal and it's affect on Alexandra Road. The event is also to be advertised in the Our Wellington Page of the Dominion Post in the week preceding the event.

The event is to be traffic managed by the Club's approved traffic management plan. Emergency services will have immediate access to the area if required.

2. Rugby World Cup and Events Directorate Support

The Events Directorate has no connection with or objection to this event.

3. Proposal Notice and Consultation

The public notice that the Council was proposing to consider this closure was published in the following newspaper:

- Dominion Post Saturday 20 November 2010

The N.Z. Bus and Coach Association and local tour bus companies have had this proposal communicated directly to them.

The New Zealand Police and the Ministry of Transport have also been consulted with.

4. Objections

No objections were received in response to the proposal notice.

5. Traffic Impact Assessment

Prior Closures

None of the proposed closures for this event will result in a road being closed for an aggregate of more than 31 days in any year.

Traffic Impact

In the opinion of Soon Teck Kong, Manager Transport Network acting as the Council's Traffic Engineer, the proposed closure, if implemented according to the plans provided, is not likely to impede traffic unreasonably subject to the conditions below. However, the Council reserves the right to modify this opinion at any time. If, in the opinion of the Council, the closure may or does impede traffic unreasonably, any approval granted by the Regulatory Processes Committee may be revoked and the event organiser may be required to open the road at the direction of a suitably qualified Council officer in charge of traffic.

Conditions:

- The event organiser is to publicly notify the event via letter drop, local newspaper advertisement, advanced signage and media releases.
- The event organiser is to ensure that the emergency services (Police, Fire and Ambulance Services) have been consulted with and that the Traffic Management Plan includes all of their specific requirements.
- Additional signage at Constable St and information to advise motorists to use an alternate route via Hawker St to the Lookout.
- Safe vehicle turning areas are to be provided for motorists where the roads and intersections are closed to public access.

Signed:



Soon Teck Kong
Manager Transport Network

ATTACHMENTS

- Copy of proposal notice from the newspaper
- Map of proposed closure

Prepared By: 

Gail Reeves
Street Activities Coordinator

Endorsed By: 

Andy Scotland
GM Strategic Events



Wellington Car Club Alexandra Road Hillclimb

Sunday 20th March 2011

Property boundaries Land Information NZ Licence WN0853547/2 CROWN COPYRIGHT RESERVED
 Accuracy in urban areas: +/-1m. Accuracy in rural areas: +/-30m. Topographic data: Wellington City Council WCC copyright reserved Accuracy +/- 30cm. Any contours displayed are only approximate and must not be used for detailed engineering design. Colour Orthophotography 1:500 flown March 2006 or Feb 2008 owned by Wellington City Council. Other data has been compiled from a variety of sources and its accuracy may vary.

MAP PRODUCED BY:
 Wellington City Council
 101 Wakefield Street
 WELLINGTON, NZ

ORIGINAL MAP SIZE: A4
 AUTHOR: Llew Lusty
 DATE: 29/01/2010

Absolutely
POSITIVELY
 Wellington



Proposed road closures

A meeting of the Regulatory Processes Committee has been scheduled for 3pm, Wednesday 15 December 2010 in the Korimako Room (Committee Room 2), ground floor, Council Offices, 101 Wakefield Street, to consider the following proposed temporary road closures for a number of events.

They are:

Bollywood film project

The following road closures are proposed for three days: Sunday 16, Sunday 23 and Monday 24 January 2011, from 5.30am–9.30pm.

Featherston Street – between Waring Taylor Street and Panama Street.

Brandon Street – between Customhouse Quay and Lambton Quay. There will be limited residents' access.

Johnston Street – between Lambton Quay and Customhouse Quay.

Johnston Street will be closed to traffic on Sunday 16 and Sunday 23 January only (not Monday 24 January), and will have limited residents' access.

Saturday 22 January

Woodward Street – between The Terrace and Lambton Quay from 6.30–10am.

The Terrace pedestrian access-way/under-pass – from the Clifton Terrace car park to Woodward Street from 6.30am–7pm.

Monday 31 January

Massey Road – at the peninsula (from a point midway in Kau Bay to a point several hundred metres south of Point Halswell) on from 5.30am–9.30pm.

Rugby Sevens Street Parade Assembly

Thursday 3 February, from 9am–1.30pm

Stout Street – between Lambton Quay and Ballance Street. Access to Creative New Zealand dockway will be maintained.

Ballance Street – between Lambton Quay and Stout Street. Access for court vehicles will be maintained.

Rugby Sevens Street Parade

Thursday 3 February from 12.40–1.40pm

Lambton Quay – between Whitmore Street and Willis Street.

Willis Street – between the Lambton Quay/Willeston Street intersection and Manners Street.

Mercer Street – between Willis Street and Victoria Street.

Victoria Street – between Harris Street and Mercer Street, including the Mercer Street/Wakefield Street intersection drop-off area.

Wakefield Street – northern side between Victoria Street and Cuba Street.

Rugby Sevens Street Party

From 5pm Saturday 5 to 6am Sunday 6 February

Courtenay Place – between Cambridge Terrace and Taranaki Street.

Blair Street – limited residents' access.

Allen Street – limited residents' access.

Tory Street – between Wakefield Street and Forresters Lane – limited resident access.

From 9pm Saturday 5 to 6am Sunday 6 February

Taranaki Street – between Ghuznee Street and Wakefield Street, including York Street, Lukes and Halleys Lane – limited residents' access.

Inglewood Place – limited residents' access to the parking building.

Dixon Street – between Courtenay Place and Egmont Street.

Manners Street – between Courtenay Place and Lukes Lane.

Island Bay Festival events

Ribble Street Races

Saturday 12 February from 8am–4.30pm (postponement date Sunday 13 February)

Ribble Street – all of Ribble Street closed.

Day at the Bay

Sunday 13 February from 6am–6pm

Reef Street – between The Esplanade and The Parade.

The Esplanade – between Derwent Street and Brighton Street.

Wellington Chinese New Year Parade

Sunday 13 February from 9am–2.30pm

Tennyson Street – between Tory Street and Cambridge Terrace – parade assembly only.

Wild Wellington Mountain Bike Relay

Saturday 19 February from 8am–10pm

Alexandra Road – from Constable Street to a point just before the access road to the Mt Victoria Lookout.

St Anthony's Bazaar

Saturday 19 February from 10am–4pm

Ludlam Street – between Ferry Street and Falkirk Avenue.

Wellington Round the Bays Fun Run

Sunday 20 February 2011 7–11am

Customhouse Quay – southbound lanes closed between Whitmore Street and Jervois Quay.

Jervois Quay – southbound lanes between Customhouse Quay and Cable Street.

Cable Street – between Jervois Quay and Oriental Parade, right-hand lane open from Chaffers Street to Kent Terrace.

8.20–11am

Oriental Parade – all of Oriental Parade closed.

Evans Bay Parade – all of Evans Bay Parade closed.

8.30–11.30am

Wellington Road – one-way between Crawford Road and Ruahine Street.

8.45am–12 noon

Shelly Bay Road – all of Shelly Bay Road closed.

Massey Road – between Shelly Bay Road and approximately Point Gordon.

Mt Victoria Inner City Festival

Saturday 26 February, from 8am–5pm (postponement date Sunday 27 February)

Roxburgh Street – between Majoribanks Street and number 27 Roxburgh Street.

Caroline Street – all of Caroline Street closed.

Newtown Fair

Sunday 6 March from 6am–8pm

Riddiford Street – between Mein Street and a point just south of Donald McLean Street.

Rintoul Street – between Riddiford Street and Colombo Street.

Constable Street – between Riddiford Street and Daniell Street.

Emmett Street – all of Emmett Street closed.

Green Street – all of Green Street closed.

Wilson Street – closed for approximately 80 metres east off Riddiford Street. This closure extends to 9.30pm.

Newtown Avenue – closed for approximately 80m east off Riddiford Street.

Normanby Street – closed for approximately 80m east off Riddiford Street.

Donald McLean Street – closed for approximately 5m east off Riddiford Street.

Kilbirnie Festival

Sunday 13 March from 6am–6pm

Bay Road – between Rongotai Road and Coutts Street.

Wellington Car Club Alexandra Road Sealed Hillclimb

Sunday 20 March from 7am–6pm

Alexandra Road – between Constable Street and the Lookout Road.

Any person objecting to a proposed road closure must contact Wellington City Council in writing before 4pm, Monday 6 December 2010. Please send correspondence to Gail Reeves at the mailing address below, by email gail.reeves@wcc.govt.nz or by fax to 801 3009.

Wellington City Council, 101 Wakefield Street,
PO Box 2199, Wellington 6140 • Wellington.govt.nz