

a t h f i e l d
a r c h i t e c t s
l i m i t e d
a t h f i e l d
a r c h i t e c t s
l i m i t e d
a t h f i e l d

**WILLIS
BOND**

16.10 110 Jervois Quay
Resource Consent
Architectural Drawings
12 August 2022



athfieldarchitects.co.nz

105 Amritsar Street
Wellington 6035
PO Box 3364
Wellington 6140
New Zealand
Tel 64 4 499 1727

MFC PRECINCT DRAWING LIST

Design Drawings

0.0 Existing

RC_0.01	Location Plan
RC_0.02	Existing Site Plan

Scale @ A3

1:2000
1:1000

Appendices

Appendix 1	Existing and Proposed Townscape Views
------------	---------------------------------------

1.0 Proposed Plans

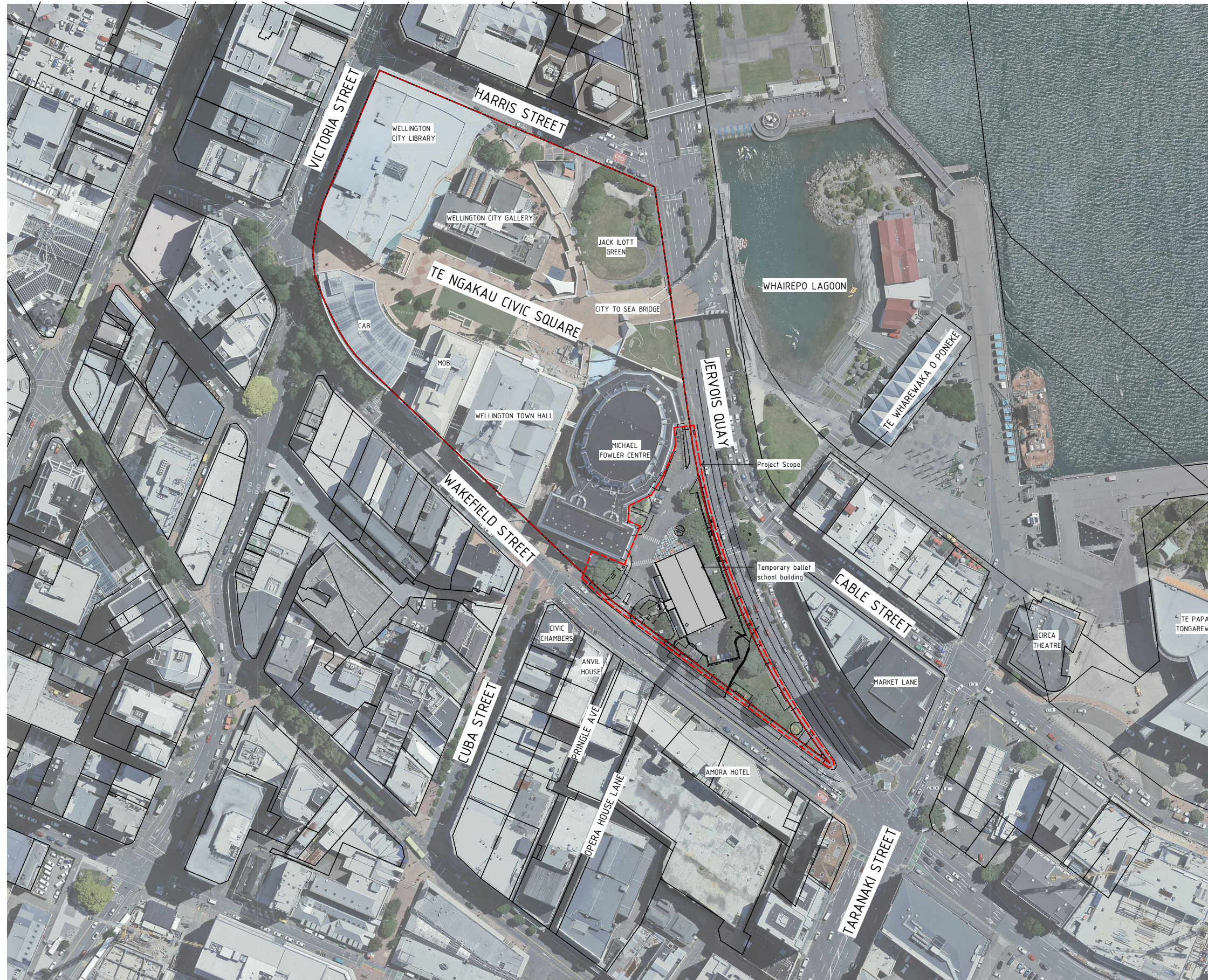
RC_1.00	Site Plan	1:1000
RC_1.01	Ground Floor Plan	1:500
RC_1.02	Level 1 Plan	1:500
RC_1.03	Level 2 Plan	1:500
RC_1.04	Level 3 Plan	1:500
RC_1.05	Level 4 Plan	1:500
RC_1.06	Level 5 Plan	1:500
RC_1.07	Level 6 Plan	1:500
RC_1.08	Level 7 Plan	1:500
RC_1.09	Level 8 Plan	1:500
RC_1.10	Roof Plan	1:500

2.0 Proposed Elevations

RC_2.00	Wakefield Street Context Elevation	1:1000
RC_2.01	Jervois Quay Context Elevation	1:1000
RC_2.02	South Elevation	1:500
RC_2.02A	South Elevation	1:500
RC_2.03	North East Elevation	1:500
RC_2.03A	North East Elevation	1:500
RC_2.04	East Elevation	1:500
RC_2.04A	East Elevation	1:500
RC_2.05	West Elevation	1:500
RC_2.05A	West Elevation	1:500

3.0 Proposed Sections

RC_3.00	Section 1	1:500
RC_3.01	Section A	1:500
RC_3.02	Section B	1:500



RC Location Plan
 1: 1000 @ A1 ; 1: 2000 @ A3

CLIENT: Willis Bond
 STRUCTURAL ENGINEER: Dunning Thornton Consultants
 SERVICES ENGINEER: Aurecon
 FIRE ENGINEER: Holmes Fire & Safety

KEY:

No.	Description	Date
1	Resource Consent	26.02.2022
2	Resource Consent Update	12.08.2022

105 AMRITSAR STREET
 WELLINGTON 6035
 PO BOX 3364
 WELLINGTON 6140
 NEW ZEALAND
 TEL 64 4 499 1727
 FAX 64 4 499 1960

a t h f i e l d
a r c h i t e c t s
l i m i t e d

110 Jervois Quay

Location Plan

1: 1000 @ A1 ; 1: 2000 @ A3

16-10

RC_0.01-



RC Existing Site Plan
 1: 500 @ A1; 1: 1000 @ A3

CLIENT: Willis Bond
 STRUCTURAL ENGINEER: Dunning Thornton Consultants
 SERVICES ENGINEER: Aurecon
 FIRE ENGINEER: Holmes Fire & Safety

KEY:



No.	Description	Date
1	Resource Consent	26.02.2022
2	Resource Consent Update	12.08.2022

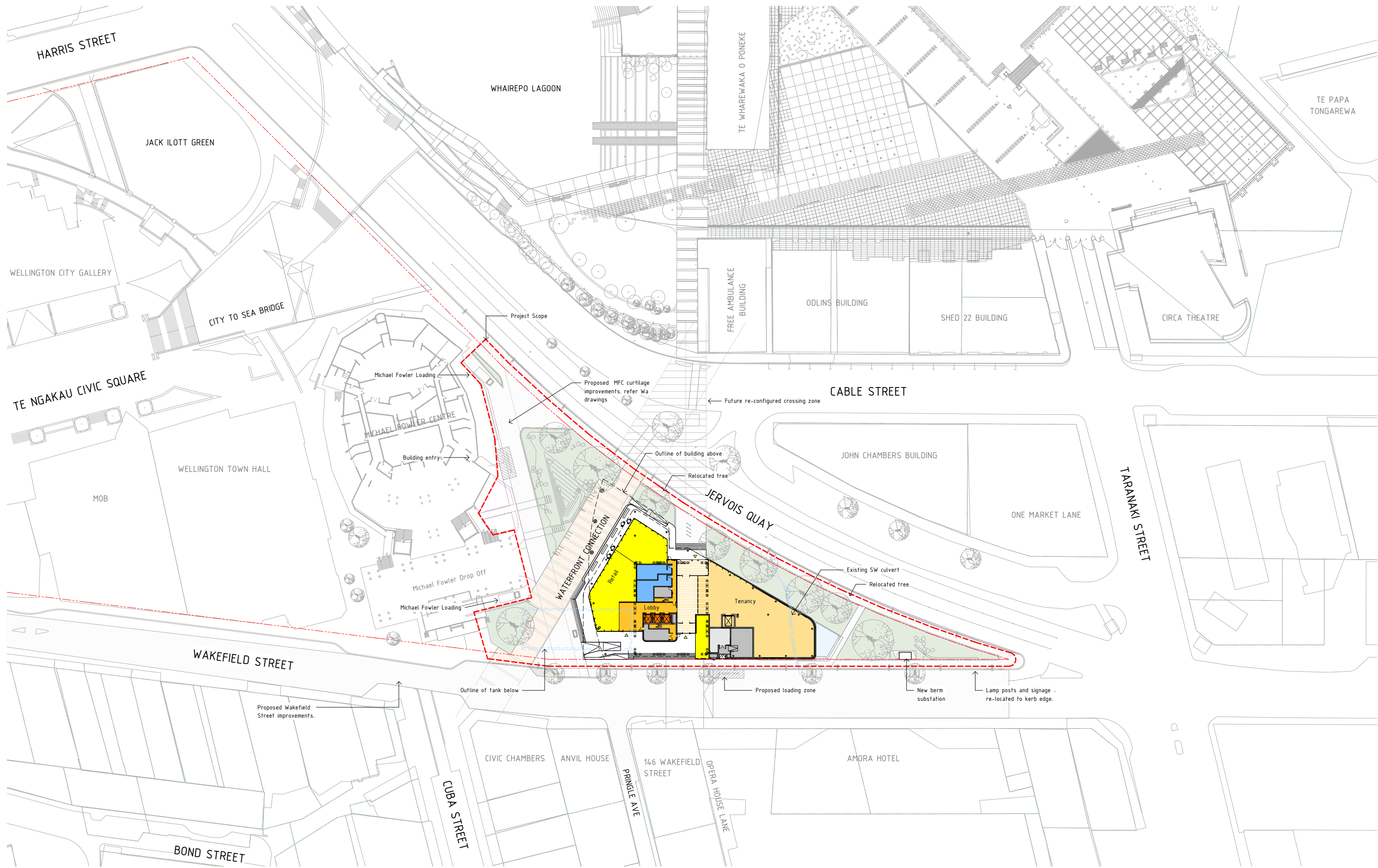
105 AMRITSAR STREET
 WELLINGTON 6035
 PO BOX 3364
 WELLINGTON 6140
 NEW ZEALAND
 TEL 64 4 499 1727
 FAX 64 4 499 1960

a t h f i e l d
a r c h i t e c t s
l i m i t e d

110 Jervis Quay
 Existing Site Plan
 1: 500 @ A1; 1: 1000 @ A3

16-10

RC_0.02-



CLIENT: Willis Bond
 STRUCTURAL ENGINEER: Dunning Thornton Consultants
 SERVICES ENGINEER: Aurecon
 FIRE ENGINEER: Holmes Fire & Safety

KEY:



No.	Description	Date
1	Resource Consent	26.02.2022
2	Resource Consent Update	12.08.2022

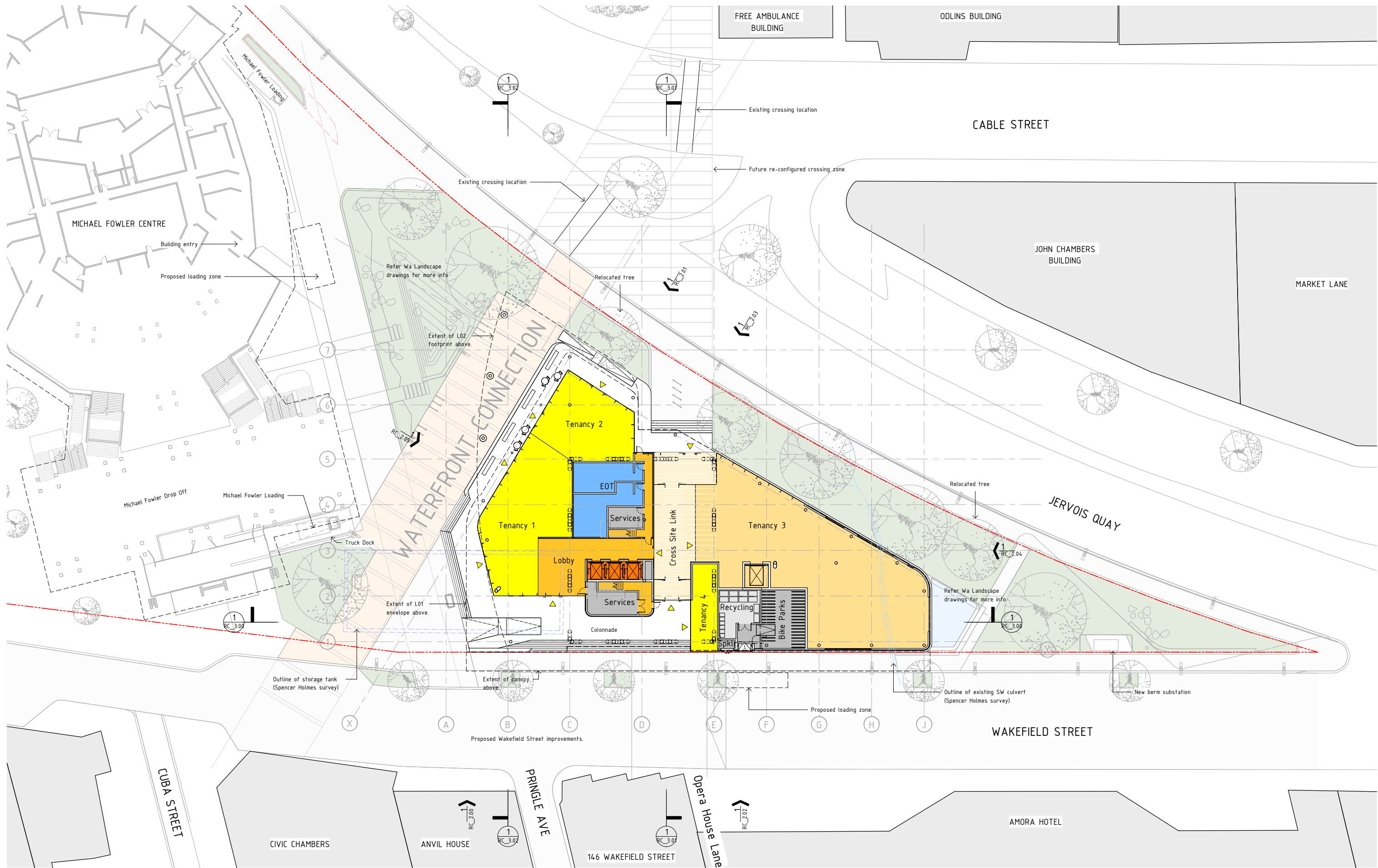
105 AMRITSAR STREET
 WELLINGTON 6035
 PO BOX 3364
 WELLINGTON 6140
 NEW ZEALAND
 TEL 64 4 499 1727
 FAX 64 4 499 1960

a t h f i e l d
a r c h i t e c t s
l i m i t e d

110 Jervis Quay
 Site Plan
 1 : 500 @ A1 ; 1 : 1000 @ A3

16-10

RC_1.00-



Ground Floor
1: 250 A1; 1: 500 @ A3

CLIENT: Willis Bond
 STRUCTURAL ENGINEER: Dunning Thornton Consultants
 SERVICES ENGINEER: Aurecon
 FIRE ENGINEER: Holmes Fire & Safety

KEY:

- Core
- Lobby
- Service Loading
- Egress
- Retail
- Tenancy
- End of Trip
- Service



No.	Description	Date
1	Resource Consent	26.02.2022
2	Resource Consent Update	12.08.2022

105 AMRITSAR STREET
 WELLINGTON 6035
 PO BOX 3364
 WELLINGTON 6140
 NEW ZEALAND
 TEL 64 4 499 1727
 FAX 64 4 499 1960

a t h f i e l d
a r c h i t e c t s
l i m i t e d

110 Jervois Quay
 Ground Floor Plan
 1: 250 A1; 1: 500 @ A3



Level 1 Plan
1: 250 A1; 1: 500 @ A3

CLIENT: Willis Bond
 STRUCTURAL ENGINEER: Dunning Thornton Consultants
 SERVICES ENGINEER: Aurecon
 FIRE ENGINEER: Holmes Fire & Safety

KEY:

- Core
- Egress
- Office



No.	Description	Date
1	Resource Consent	26.02.2022
2	Resource Consent Update	12.08.2022

105 AMRITSAR STREET
 WELLINGTON 6035
 PO BOX 3364
 WELLINGTON 6140
 NEW ZEALAND
 TEL 64 4 499 1727
 FAX 64 4 499 1960

a t h f i e l d
a r c h i t e c t s
l i m i t e d

110 Jervois Quay
 Level 1 Plan
 1: 250 A1; 1: 500 @ A3



Level 2 Plan
1: 250 A1; 1: 500 @ A3

CLIENT: Willis Bond
 STRUCTURAL ENGINEER: Dunning Thornton Consultants
 SERVICES ENGINEER: Aurecon
 FIRE ENGINEER: Holmes Fire & Safety

KEY:

- Core
- Egress
- Office



No.	Description	Date
1	Resource Consent	26.02.2022
2	Resource Consent Update	12.08.2022

105 AMRITSAR STREET
 WELLINGTON 6035
 PO BOX 3364
 WELLINGTON 6140
 NEW ZEALAND
 TEL 64 4 499 1727
 FAX 64 4 499 1960

a t h f i e l d
a r c h i t e c t s
l i m i t e d

110 Jervois Quay
 Level 2 Plan
 1: 250 A1; 1: 500 @ A3

16-10
 RC_1.03-



Level 3 Plan
 1: 250 A1; 1: 500 @ A3

CLIENT: Willis Bond
 STRUCTURAL ENGINEER: Dunning Thornton Consultants
 SERVICES ENGINEER: Aurecon
 FIRE ENGINEER: Holmes Fire & Safety

KEY:

- Core
- Egress
- Office



No.	Description	Date
1	Resource Consent	26.02.2022
2	Resource Consent Update	12.08.2022

105 AMRITSAR STREET
 WELLINGTON 6035
 PO BOX 3364
 WELLINGTON 6140
 NEW ZEALAND
 TEL 64 4 499 1727
 FAX 64 4 499 1960

a t h f i e l d
a r c h i t e c t s
l i m i t e d

110 Jervois Quay
 Level 3 Plan
 1: 250 A1; 1: 500 @ A3

16-10
 RC_1.04-



Level 4 Plan
1: 250 A1; 1: 500 @ A3

CLIENT: Willis Bond
 STRUCTURAL ENGINEER: Dunning Thornton Consultants
 SERVICES ENGINEER: Aurecon
 FIRE ENGINEER: Holmes Fire & Safety

KEY:

- Core
- Egress
- Office



No.	Description	Date
1	Resource Consent	26.02.2022
2	Resource Consent Update	12.08.2022

105 AMRITSAR STREET
 WELLINGTON 6035
 PO BOX 3364
 WELLINGTON 6140
 NEW ZEALAND
 TEL 64 4 499 1727
 FAX 64 4 499 1960

a t h f i e l d
a r c h i t e c t s
l i m i t e d

110 Jervois Quay
 Level 4 Plan
 1: 250 A1; 1: 500 @ A3



Level 5 Plan
1: 250 A1; 1: 500 @ A3

CLIENT: Willis Bond
 STRUCTURAL ENGINEER: Dunning Thornton Consultants
 SERVICES ENGINEER: Aurecon
 FIRE ENGINEER: Holmes Fire & Safety

KEY:

- Core
- Egress
- Office



No.	Description	Date
1	Resource Consent	26.02.2022
2	Resource Consent Update	12.08.2022

105 AMRITSAR STREET
 WELLINGTON 6035
 PO BOX 3364
 WELLINGTON 6140
 NEW ZEALAND
 TEL 64 4 499 1727
 FAX 64 4 499 1960

a t h f i e l d
a r c h i t e c t s
l i m i t e d

110 Jervois Quay
 Level 5 Plan
 1: 250 A1; 1: 500 @ A3

16-10
 RC_1.06-



Level 6 Plan
1: 250 A1; 1: 500 @ A3

CLIENT: Willis Bond
 STRUCTURAL ENGINEER: Dunning Thornton Consultants
 SERVICES ENGINEER: Aurecon
 FIRE ENGINEER: Holmes Fire & Safety

KEY:

- Core
- Egress
- Office



No.	Description	Date
1	Resource Consent	26.02.2022
2	Resource Consent Update	12.08.2022

105 AMRITSAR STREET
 WELLINGTON 6035
 PO BOX 3364
 WELLINGTON 6140
 NEW ZEALAND
 TEL 64 4 499 1727
 FAX 64 4 499 1960

a t h f i e l d
a r c h i t e c t s
l i m i t e d

110 Jervois Quay
 Level 6 Plan
 1: 250 A1; 1: 500 @ A3



Level 7 Plan
 1: 250 A1; 1: 500 @ A3

CLIENT: Willis Bond
 STRUCTURAL ENGINEER: Dunning Thornton Consultants
 SERVICES ENGINEER: Aurecon
 FIRE ENGINEER: Holmes Fire & Safety

KEY:

- Core
- Egress
- Office



No.	Description	Date
1	Resource Consent	26.02.2022
2	Resource Consent Update	12.08.2022

105 AMRITSAR STREET
 WELLINGTON 6035
 PO BOX 3364
 WELLINGTON 6140
 NEW ZEALAND
 TEL 64 4 499 1727
 FAX 64 4 499 1960

a t h f i e l d
a r c h i t e c t s
l i m i t e d

110 Jervois Quay
 Level 7 Plan
 1: 250 A1; 1: 500 @ A3



Level 8 Plan
 1: 250 A1; 1: 500 @ A3

CLIENT: Willis Bond
 STRUCTURAL ENGINEER: Dunning Thornton Consultants
 SERVICES ENGINEER: Aurecon
 FIRE ENGINEER: Holmes Fire & Safety

KEY:

- Core
- Egress
- Office
- Service



No.	Description	Date
1	Resource Consent	26.02.2022
2	Resource Consent Update	12.08.2022

105 AMRITSAR STREET
 WELLINGTON 6035
 PO BOX 3364
 WELLINGTON 6140
 NEW ZEALAND
 TEL 64 4 499 1727
 FAX 64 4 499 1960

a t h f i e l d
a r c h i t e c t s
l i m i t e d

110 Jervois Quay
 Level 8 Plan
 1: 250 A1; 1: 500 @ A3



Roof Plan
1: 250 A1; 1: 500 @ A3

CLIENT: Willis Bond
 STRUCTURAL ENGINEER: Dunning Thornton Consultants
 SERVICES ENGINEER: Aurecon
 FIRE ENGINEER: Holmes Fire & Safety

KEY:



No.	Description	Date
1	Resource Consent	26.02.2022
2	Resource Consent Update	12.08.2022

105 AMRITSAR STREET
 WELLINGTON 6035
 PO BOX 3364
 WELLINGTON 6140
 NEW ZEALAND
 TEL 64 4 499 1727
 FAX 64 4 499 1960

a t h f i e l d
a r c h i t e c t s
l i m i t e d

110 Jervois Quay
 Roof Plan
 1: 250 A1; 1: 500 @ A3

16-10
 RC_1.10-



Wakefield St Context Elevation
 1:500 @ A1 ; 1:1000 @ A3

CLIENT: Willis Bond
 STRUCTURAL ENGINEER: Dunning Thornton Consultants
 SERVICES ENGINEER: Aurecon
 FIRE ENGINEER: Holmes Fire & Safety

KEY:

No.	Description	Date
1	Resource Consent	26.02.2022
2	Resource Consent Update	12.08.2022

105 AMRITSAR STREET
 WELLINGTON 6035
 PO BOX 3364
 WELLINGTON 6140
 NEW ZEALAND
 TEL 64 4 499 1727
 FAX 64 4 499 1960

a t h f i e l d
 a r c h i t e c t s
 l i m i t e d

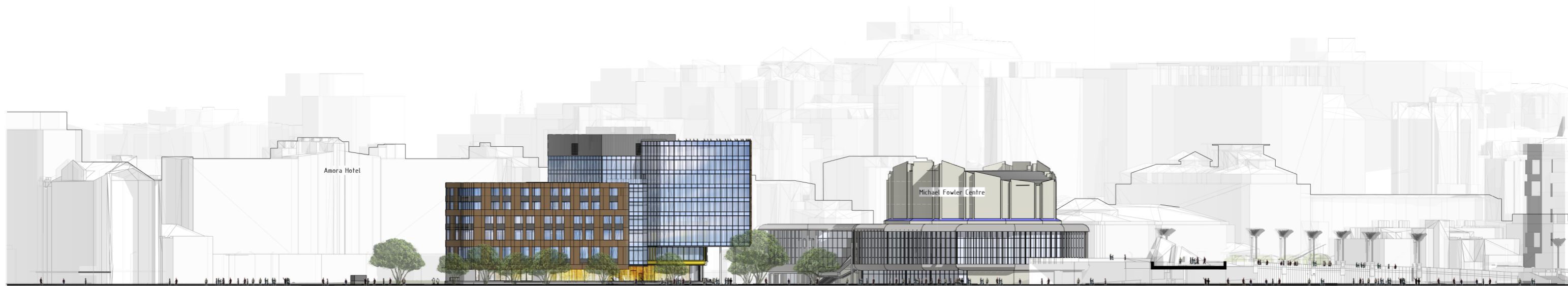
110 Jervois Quay

16-10

Wakefield Street Context Elevation

1:500 @ A1 ; 1:1000 @ A3

RC_2.00-



Jervois Quay Context Elevation
 1:500 @ A1; 1:1000 @ A3

PH
 PO BOX
 EMAIL

PH
 PO BOX
 EMAIL



PO BOX 3724
 CHRISTCHURCH 8140
 NEW ZEALAND
 TEL 64 3 377 2007
 FAX 64 3 377 2009

PO BOX 3364
 WELLINGTON 6140
 NEW ZEALAND
 TEL 64 4 499 1727
 FAX 64 4 499 1960

architects
 limited

CLIENT: Willis Bond
 STRUCTURAL ENGINEER: Dunning Thornton Consultants
 SERVICES ENGINEER: Aurecon
 FIRE ENGINEER: Holmes Fire & Safety

KEY:

No.	Description	Date
1	Resource Consent	26.02.2022
2	Resource Consent Update	12.08.2022

105 AMRITSAR STREET
 WELLINGTON 6035
 PO BOX 3364
 WELLINGTON 6140
 NEW ZEALAND
 TEL 64 4 499 1727
 FAX 64 4 499 1960

athfield
 architects
 limited

110 Jervois Quay

16-10

Jervois Quay Context Elevation

1:500 @ A1; 1:1000 @ A3

RC_2.01-



RC - South Elevation
1: 250 A1; 1: 500 @ A3

- A East Wing**
 Profiled terracotta cladding with glazed finished, or large format porcelain panels.
 Punched windows with prefinished aluminium spandrel panels and reveals.
Additional infill to selected areas subject to tenant requirements and optimum environmental performance.
- B West Wedge**
 Unitised curtain wall system with folded metal infill panels and vertical fins.

- C Exterior Fins**
 Prefinished vertical metal louvres supported off unitised curtain wall system.
- D Plantroom**
 Vertical profile metal cladding with integrated banks of louvres.

- E Exposed Structure**
 Folded metal cladding to West Wedge support structure.
- F The Lantern**
 Unitised curtain wall system with insulated backpan spandrels.

- G Shopfront**
 Flush glazed aluminium shopfront with integrated louvres for tenancy fresh air supply.
 Glazed pivot and sliding doors.
- H Solid Facade**
 Profiled precast concrete panels or masonry wall with expressed plinth condition.

- J Wakefield Street Colonnade**
 Glazed or textured tile.
- K Green Wall**
 Stainless steel support rods for climbing plants.

CLIENT: Willis Bond
 STRUCTURAL ENGINEER: Dunning Thornton Consultants
 SERVICES ENGINEER: Aurecon
 FIRE ENGINEER: Holmes Fire & Safety

KEY:

No.	Description	Date
1	Resource Consent	16.02.2022
2	Resource Consent Update	12.08.2022

105 AMRITSAR STREET
 WELLINGTON 6035
 PO BOX 3364
 WELLINGTON 6140
 NEW ZEALAND
 TEL 64 4 499 1727
 FAX 64 4 499 1960

a t h f i e l d
 a r c h i t e c t s
 l i m i t e d

110 Jervois Quay
 South Elevation
 1: 250 A1; 1: 500 @ A3



RC – North-East Elevation
1 : 250 A1 ; 1 : 500 @ A3

- A East Wing**
 Profiled terracotta cladding with glazed finished, or large format porcelain panels.
 Punched windows with prefinished aluminium spandrel panels and reveals.
Additional infill to selected areas subject to tenant requirements and optimum environmental performance.
- B West Wedge**
 Unitised curtain wall system with folded metal infill panels and vertical fins.

- C Exterior Fins**
 Prefinished vertical metal louvres supported off unitised curtain wall system.
- D Plantroom**
 Vertical profile metal cladding with integrated banks of louvres.

- E Exposed Structure**
 Folded metal cladding to West Wedge support structure.
- F The Lantern**
 Unitised curtain wall system with insulated backpan spandrels.

- G Shopfront**
 Flush glazed aluminium shopfront with integrated louvres for tenancy fresh air supply.
 Glazed pivot and sliding doors.
- H Solid Facade**
 Profiled precast concrete panels or masonry wall with expressed plinth condition.

- J Wakefield Street Colonnade**
 Glazed or textured tile.
- K Green Wall**
 Stainless steel support rods for climbing plants.

CLIENT: Willis Bond
 STRUCTURAL ENGINEER: Dunning Thornton Consultants
 SERVICES ENGINEER: Aurecon
 FIRE ENGINEER: Holmes Fire & Safety

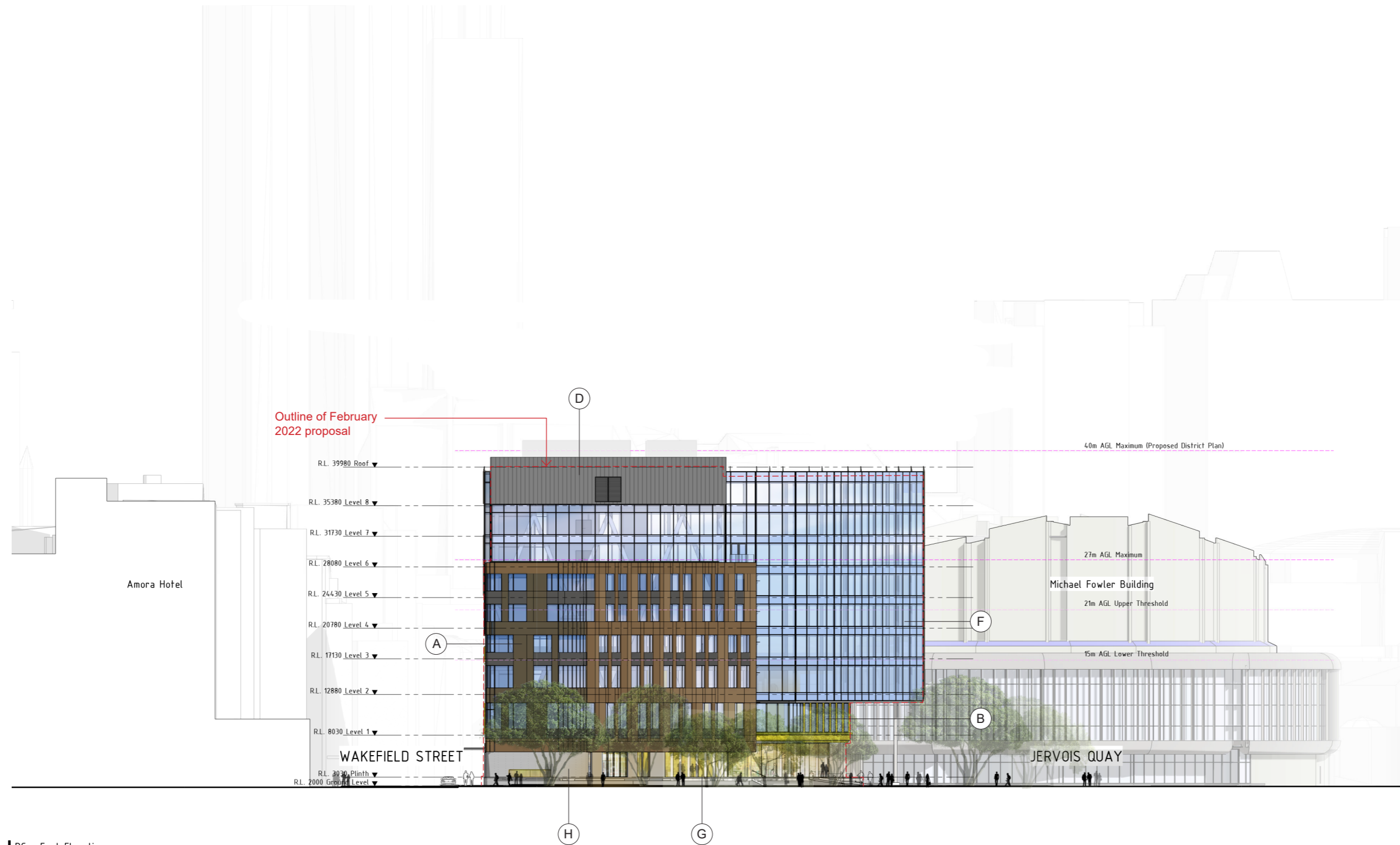
KEY:

No.	Description	Date
1	Resource Consent	26.02.2022
2	Resource Consent Update	12.08.2022

105 AMRITSAR STREET
 WELLINGTON 6035
 PO BOX 3364
 WELLINGTON 6140
 NEW ZEALAND
 TEL 64 4 499 1727
 FAX 64 4 499 1960

a t h f i e l d
 a r c h i t e c t s
 l i m i t e d

110 Jervois Quay
 North East Elevation
 1 : 250 A1 ; 1 : 500 @ A3



RC - East Elevation
1: 250 A1; 1: 500 @ A3

- A East Wing**
 Profiled terracotta cladding with glazed finished, or large format porcelain panels.
 Punched windows with prefinished aluminium spandrel panels and reveals.
Additional infill to selected areas subject to tenant requirements and optimum environmental performance.
- B West Wedge**
 Unitised curtain wall system with folded metal infill panels and vertical fins.

- C Exterior Fins**
 Prefinished vertical metal louvres supported off unitised curtain wall system.
- D Plantroom**
 Vertical profile metal cladding with integrated banks of louvres.

- E Exposed Structure**
 Folded metal cladding to West Wedge support structure.
- F The Lantern**
 Unitised curtain wall system with insulated backpan spandrels.

- G Shopfront**
 Flush glazed aluminium shopfront with integrated louvres for tenancy fresh air supply.
 Glazed pivot and sliding doors.
- H Solid Facade**
 Profiled precast concrete panels or masonry wall with expressed plinth condition.

- J Wakefield Street Colonnade**
 Glazed or textured tile.
- K Green Wall**
 Stainless steel support rods for climbing plants.

CLIENT: Willis Bond
 STRUCTURAL ENGINEER: Dunning Thornton Consultants
 SERVICES ENGINEER: Aurecon
 FIRE ENGINEER: Holmes Fire & Safety

KEY:

No.	Description	Date
1	Resource Consent	26.02.2022
2	Resource Consent Update	12.08.2022

105 AMRITSAR STREET
 WELLINGTON 6035
 PO BOX 3364
 WELLINGTON 6140
 NEW ZEALAND
 TEL 64 4 499 1727
 FAX 64 4 499 1960

a t h f i e l d
 a r c h i t e c t s
 l i m i t e d

110 Jervis Quay
 East Elevation
 1: 250 A1; 1: 500 @ A3



RC - West Elevation / Waterfront Link
1: 250 A1; 1: 500 @ A3

- A East Wing**
 Profiled terracotta cladding with glazed finished, or large format porcelain panels.
 Punched windows with prefinished aluminium spandrel panels and reveals.
Additional infill to selected areas subject to tenant requirements and optimum environmental performance.
- B West Wedge**
 Unitised curtain wall system with folded metal infill panels and vertical fins.

- C Exterior Fins**
 Prefinished vertical metal louvres supported off unitised curtain wall system.
- D Plantroom**
 Vertical profile metal cladding with integrated banks of louvres.

- E Exposed Structure**
 Folded metal cladding to West Wedge support structure.
- F The Lantern**
 Unitised curtain wall system with insulated backpan spandrels.

- G Shopfront**
 Flush glazed aluminium shopfront with integrated louvres for tenancy fresh air supply.
 Glazed pivot and sliding doors.
- H Solid Facade**
 Profiled precast concrete panels or masonry wall with expressed plinth condition.

- J Wakefield Street Colonnade**
 Glazed or textured tile.
- K Green Wall**
 Stainless steel support rods for climbing plants.

CLIENT: Willis Bond
 STRUCTURAL ENGINEER: Dunning Thornton Consultants
 SERVICES ENGINEER: Aurecon
 FIRE ENGINEER: Holmes Fire & Safety

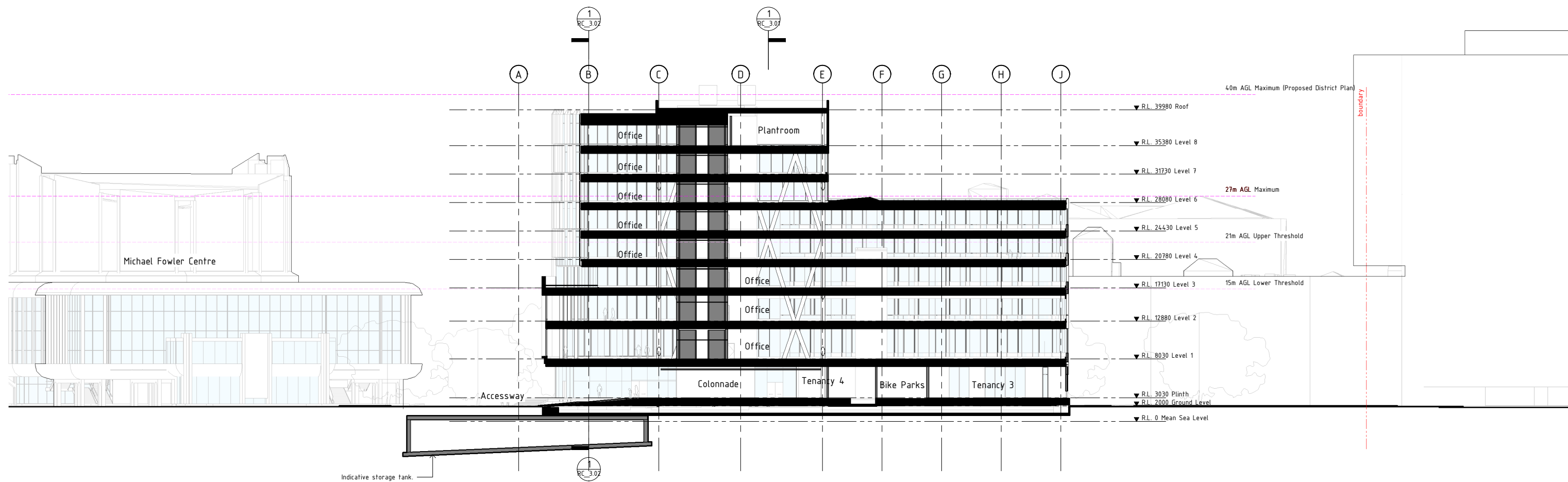
KEY:

No.	Description	Date
1	Resource Consent	26.02.2022
2	Resource Consent Update	12.08.2022

105 AMRITSAR STREET
 WELLINGTON 6035
 PO BOX 3364
 WELLINGTON 6140
 NEW ZEALAND
 TEL 64 4 499 1727
 FAX 64 4 499 1960

a t h f i e l d
 a r c h i t e c t s
 l i m i t e d

110 Jervois Quay
 West Elevation
 1: 250 A1; 1: 500 @ A3



Section 1
1: 250 A1; 1: 500 @ A3

CLIENT: Willis Bond
 STRUCTURAL ENGINEER: Dunning Thornton Consultants
 SERVICES ENGINEER: Aurecon
 FIRE ENGINEER: Holmes Fire & Safety

KEY:

No.	Description	Date
1	Resource Consent	26.02.2022
2	Resource Consent Update	12.08.2022

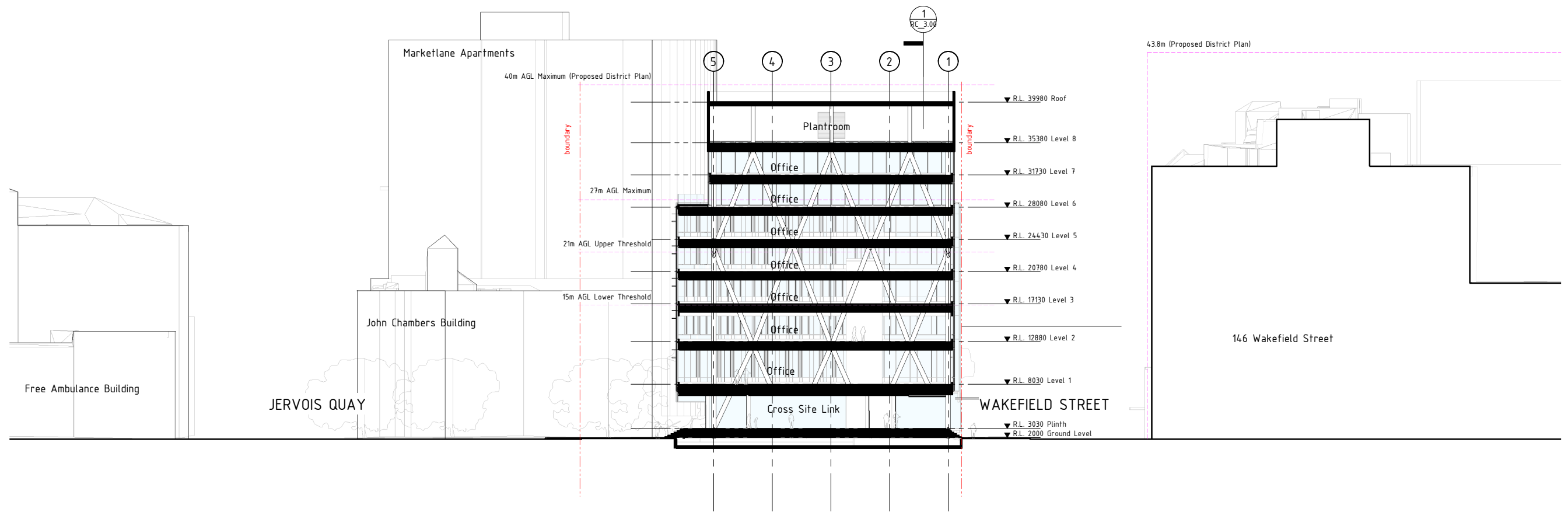
105 AMRITSAR STREET
 WELLINGTON 6035
 PO BOX 3364
 WELLINGTON 6140
 NEW ZEALAND
 TEL 64 4 499 1727
 FAX 64 4 499 1960

a t h f i e l d
 a r c h i t e c t s
 l i m i t e d

110 Jervois Quay
 Section 1
 1: 250 A1; 1: 500 @ A3

16-10

RC_3.00-



Section A
1 : 250 A1 ; 1 : 500 @ A3

CLIENT: Willis Bond
 STRUCTURAL ENGINEER: Dunning Thornton Consultants
 SERVICES ENGINEER: Aurecon
 FIRE ENGINEER: Holmes Fire & Safety

KEY:

No.	Description	Date
1	Resource Consent	26.02.2022
2	Resource Consent Update	12.08.2022

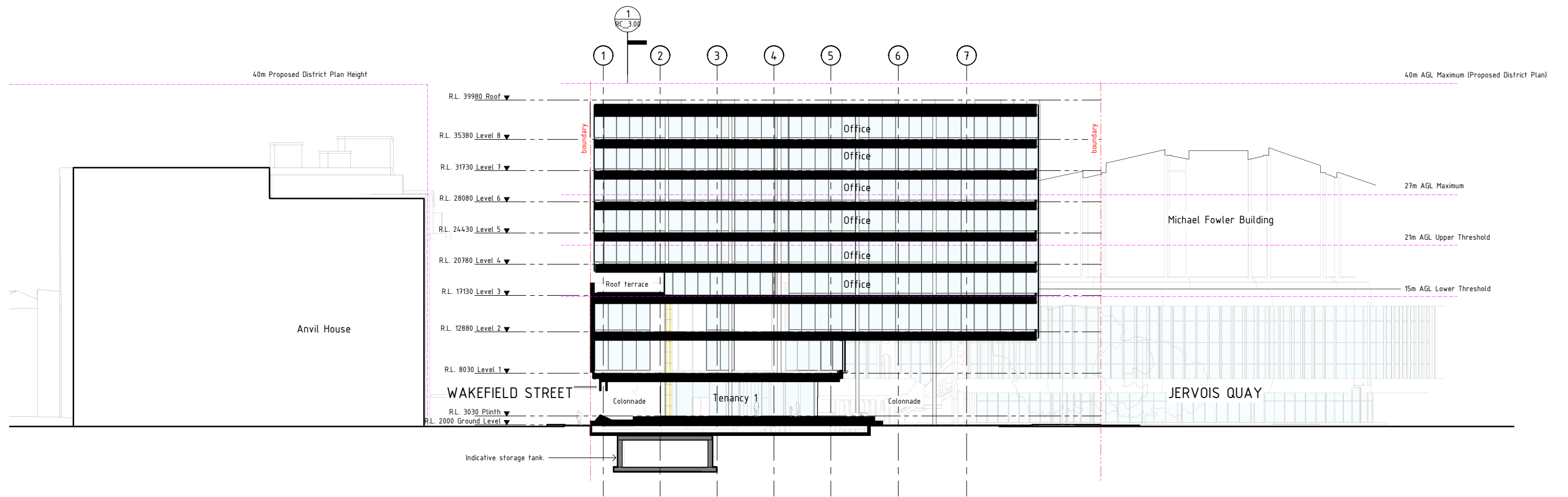
105 AMRITSAR STREET
 WELLINGTON 6035
 PO BOX 3364
 WELLINGTON 6140
 NEW ZEALAND
 TEL 64 4 499 1727
 FAX 64 4 499 1960

a t h f i e l d
 a r c h i t e c t s
 l i m i t e d

110 Jervois Quay
 Section A
 1 : 250 A1 ; 1 : 500 @ A3

16-10

RC_3.01-



Section B
1 : 250 A1 ; 1 : 500 @ A3

CLIENT: Willis Bond
 STRUCTURAL ENGINEER: Dunning Thornton Consultants
 SERVICES ENGINEER: Aurecon
 FIRE ENGINEER: Holmes Fire & Safety

KEY:

No.	Description	Date
1	Resource Consent	26.02.2022
2	Resource Consent Update	12.08.2022

105 AMRITSAR STREET
 WELLINGTON 6035
 PO BOX 3364
 WELLINGTON 6140
 NEW ZEALAND
 TEL 64 4 499 1727
 FAX 64 4 499 1960

a t h f i e l d
 a r c h i t e c t s
 l i m i t e d

110 Jervois Quay
 Section B
 1 : 250 A1 ; 1 : 500 @ A3

16-10

RC_3.02-