

- LEGEND**
- 01 existing carpark
 - 02 storage / service
 - 03 carpark vehicle access
 - 04 carpark pedestrian access
 - 05 dragonboat store
 - 06 public toilets
 - 07 retail unit
 - 08 cafe
 - 09 lowered slab over
 - 10 carpark ventilation duct

consultant team:

engineer – structural:
dunning thornton consultants limited

engineer – civil, services + environmental:
aurecon

engineer – lighting:
sinclair knight merz

quantity surveyor
rider levett bucknell

landscape architect:
wraight + associates limited

architect:
athfield architects limited

garden consultant:
duncan campbell

65 CAMBRIDGE TERRACE
CHRISTCHURCH 8013
PO BOX 3724
CHRISTCHURCH 8140
NEW ZEALAND
TEL 64 3 377 2007
FAX 64 3 377 2009

105 AMRITSAR STREET
WELLINGTON 6035
PO BOX 3364
WELLINGTON 6140
NEW ZEALAND
TEL 64 4 499 1727
FAX 64 4 499 1960

**athfield
architects
limited**

drawn by:	issue	amendment	by	ch.	date
	A	RC CLIENT REVIEW	JC		04.02.16
	B	RESOURCE CONSENT	JC		11.04.16



drawing title:
**Level 0 Plan
carpark and promenade**

project name:
Frank Kitts Park

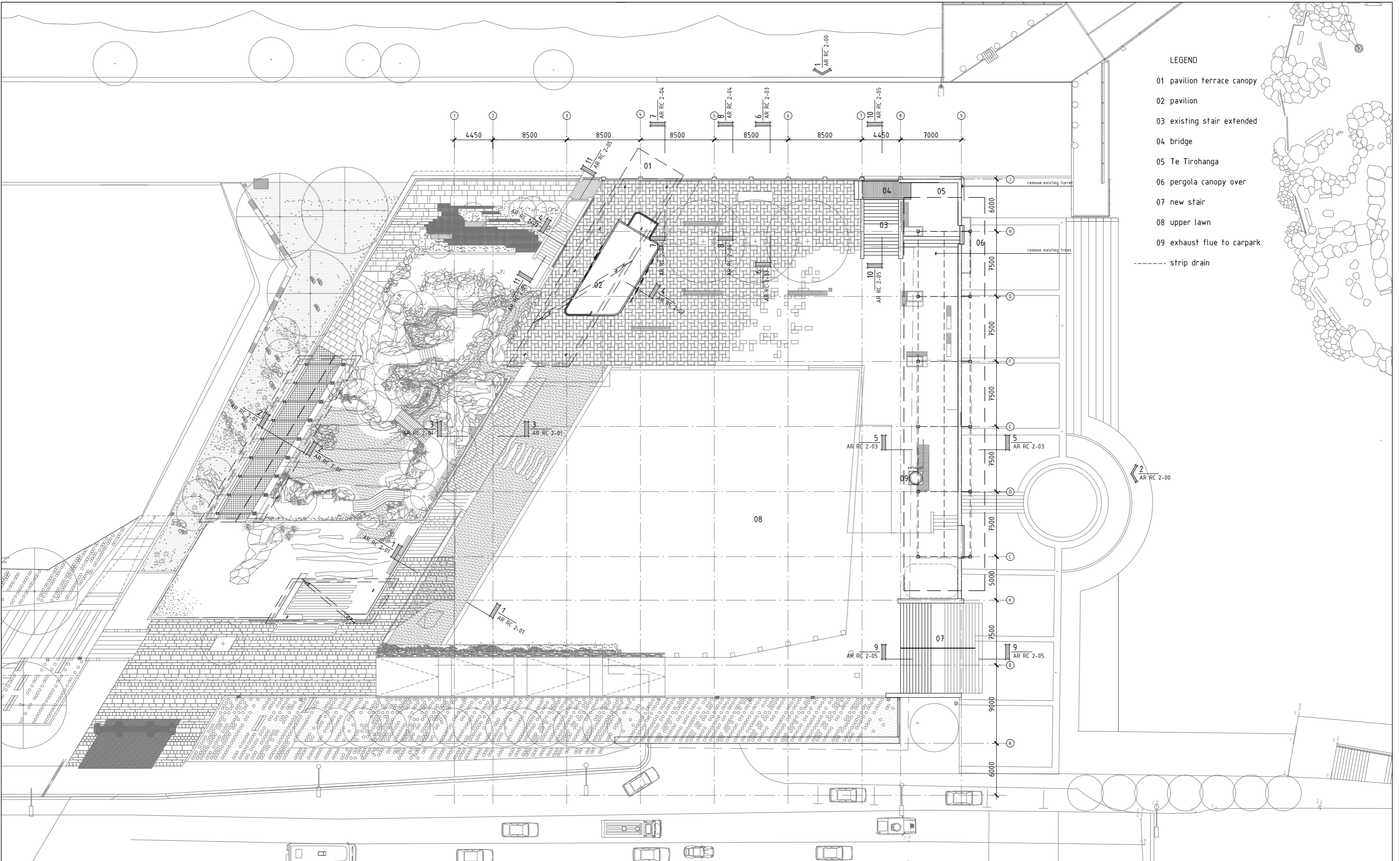
client:
Wellington Waterfront Limited+
Wellington Chinese Garden Society

north + scale:
1:200@A1 1:400@A3

drawing no.
AR RC 1-00

POSITIVELY
Wellington Waterfront Ltd
WATERFRONT

惠靈頓林園協會
Wellington Chinese Garden Society Inc.



- LEGEND
- 01 pavilion terrace canopy
 - 02 pavilion
 - 03 existing stair extended
 - 04 bridge
 - 05 Te Tirohanga
 - 06 pergola canopy over
 - 07 new stair
 - 08 upper lawn
 - 09 exhaust flue to carpark
 - strip drain

consultant team:

engineer – structural:
dunning thornton consultants limited

engineer – civil, services + environmental:
aurecon

engineer – lighting:
sinclair knight merz

quantity surveyor
rider levett bucknell

landscape architect:
wright + associates limited

architect:
athfield architects limited

garden consultant:
duncan campbell

65 CAMBRIDGE TERRACE
CHRISTCHURCH 8013
PO BOX 3724
CHRISTCHURCH 8140
NEW ZEALAND
TEL 64 3 377 2007
FAX 64 3 377 2009

105 AMRITSAR STREET
WELLINGTON 6035
PO BOX 3364
WELLINGTON 6140
NEW ZEALAND
TEL 64 4 499 1727
FAX 64 4 499 1960

**athfield
architects
limited**

drawn by:	issue	amendment	by	ch.	date
	A	RC CLIENT REVIEW	JC		04.02.16
	B	RESOURCE CONSENT	JC		11.04.16



drawing title:
**Level 1 Plan
upper/city lawn**

north + scale:
1:200@A1 1:400@A3

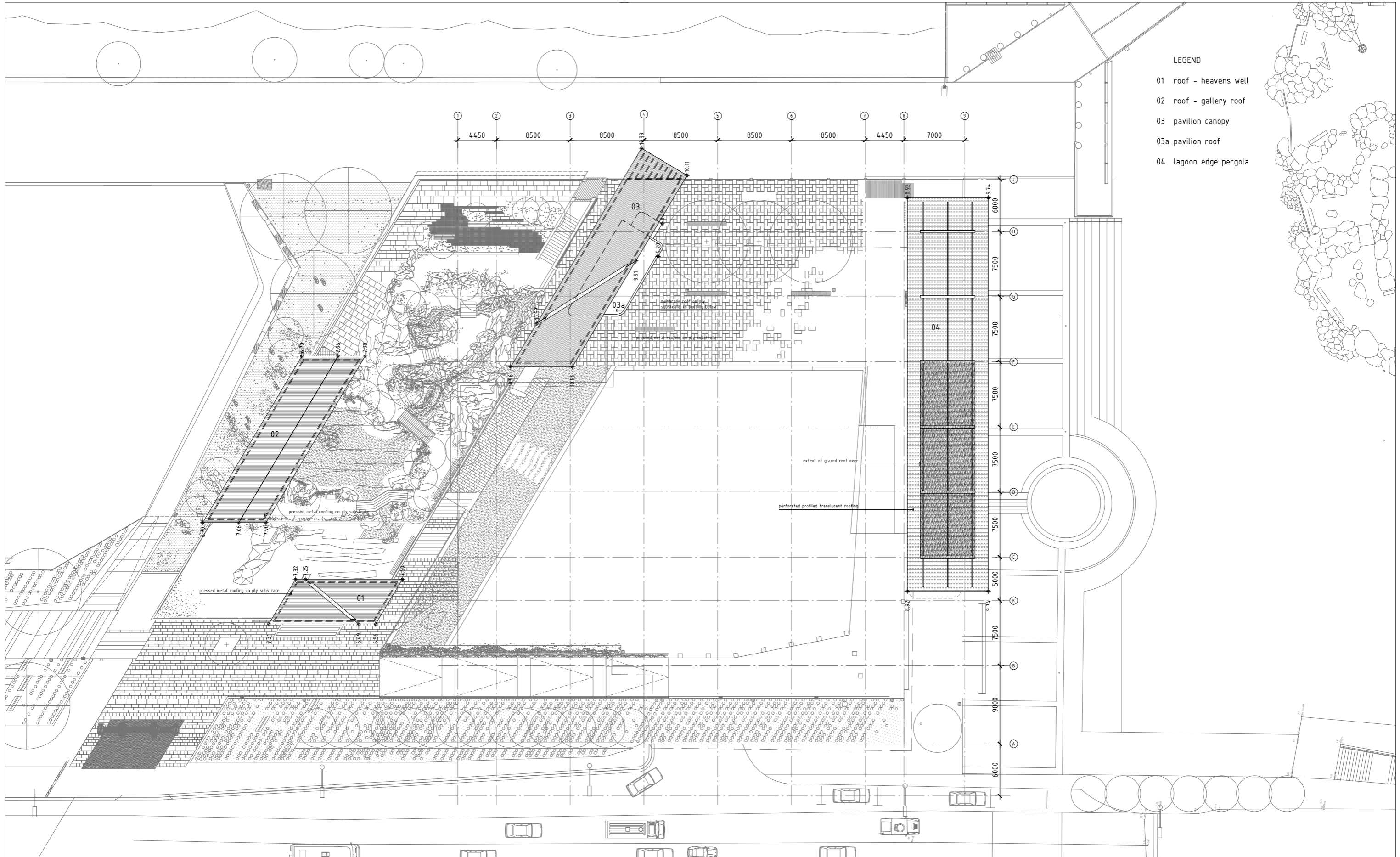
drawing no.
AR RC 1-01

project name:
Frank Kitts Park

client:
Wellington Waterfront Limited+
Wellington Chinese Garden Society

POSITIVELY Wellington WATERFRONT

惠靈頓林園協會
Wellington Chinese Garden Society Inc.



- LEGEND**
- 01 roof - heavens well
 - 02 roof - gallery roof
 - 03 pavilion canopy
 - 03a pavilion roof
 - 04 lagoon edge pergola

consultant team:

engineer - structural:
dunning thornton consultants limited

engineer - civil, services + environmental:
aurecon

engineer - lighting:
sinclair knight merz

quantity surveyor
rider levett bucknell

landscape architect:
wraight + associates limited

architect:
athfield architects limited

garden consultant:
duncan campbell

65 CAMBRIDGE TERRACE
CHRISTCHURCH 8013
PO BOX 3724
CHRISTCHURCH 8140
NEW ZEALAND
TEL 64 3 377 2007
FAX 64 3 377 2009

105 AMRITSAR STREET
WELLINGTON 6035
PO BOX 3364
WELLINGTON 6140
NEW ZEALAND
TEL 64 4 499 1727
FAX 64 4 499 1960

**athfield
architects
limited**

drawn by:	issue	amendment	by	ch.	date
	A	RC CLIENT REVIEW	JC		04.02.16
	B	RESOURCE CONSENT	JC		11.04.16



drawing title:
Roof Plan

project name:
Frank Kitts Park

north + scale:
1:200@A1 1:400@A3

client:
Wellington Waterfront Limited+
Wellington Chinese Garden Society

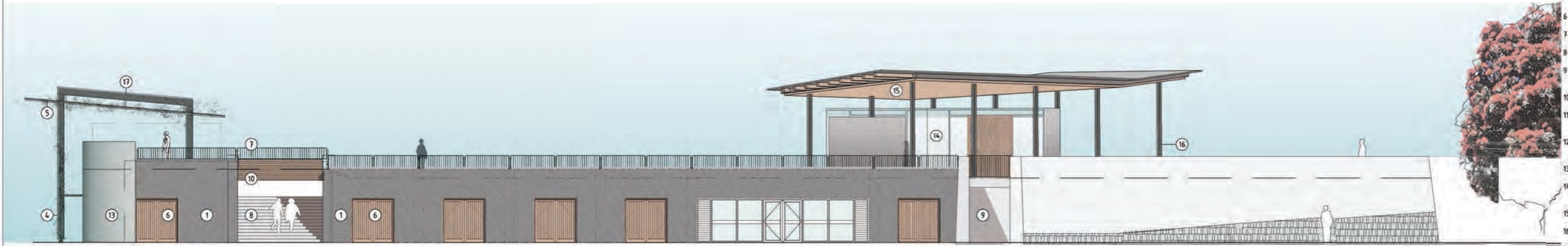
drawing no.
AR RC 1-02

POSITIVELY Wellington WATERFRONT

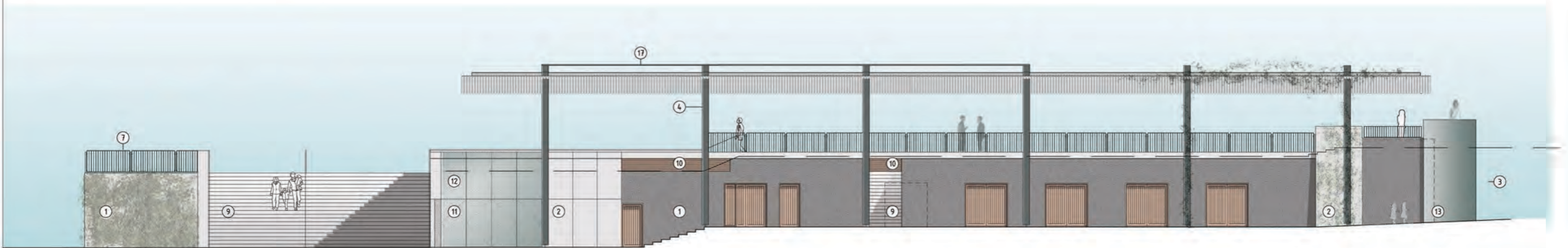
惠靈頓林園協會
Wellington Chinese Garden Society Inc.

LEGEND

- 1 existing exposed aggregate concrete panel
- 2 new precast concrete panel cladding with etched surface finish - refer sections for rapping detail
- 3 outline of existing concrete features removed
- 4 hardwood timber pergola frame - refer sections
- 5 perforated translucent profiled roof - refer sections
- 6 timber doors with steel flat jamb detail
- 7 zinc sprayed flat bar balustrade panel
- 8 existing stair with new stone treads
- 9 new precast concrete stair with stone treads
- 10 horizontal T&G hardwood panel cladding
- 11 zinc sprayed metal shutter panel with etched surface pattern
- 12 fixed zinc sprayed metal panel with etched surface pattern (refer sections for profile)
- 13 'rolled' zinc sprayed steel corner panel
- 14 extent of tea pavilion in elevation shown dotted
- 15 pavilion roof see AR RC 2-02
- 16 steel structure to folded roof
- 17 glazed roof over steel structure



1 east elevation



2 south elevation

consultant team:

engineer - structural:
dunning thornton consultants limited

engineer - civil, services + environmental:
aurecon

engineer - lighting:
sinclair knight merz

quantity surveyor
rider levett bucknell

landscape architect:
wright + associates limited

architect:
athfield architects limited

garden consultant:
duncan campbell

65 CAMBRIDGE TERRACE
CHRISTCHURCH 8013
PO BOX 3724
CHRISTCHURCH 8140
NEW ZEALAND
TEL 64 3 377 2007
FAX 64 3 377 2009

105 AMRITSAR STREET
WELLINGTON 6055
PO BOX 3364
WELLINGTON 6140
NEW ZEALAND
TEL 64 4 499 1727
FAX 64 4 499 1960

athfield
architects
limited

drawn by:	issue	amendment	by	ch.	date
	A	RC CLIENT REVIEW	JC		04.02.16
	B	RESOURCE CONSENT	JC		11.04.16

drawing title:
Car park elevations
east and south

north + scale:
1:100@A1 1:200@A3

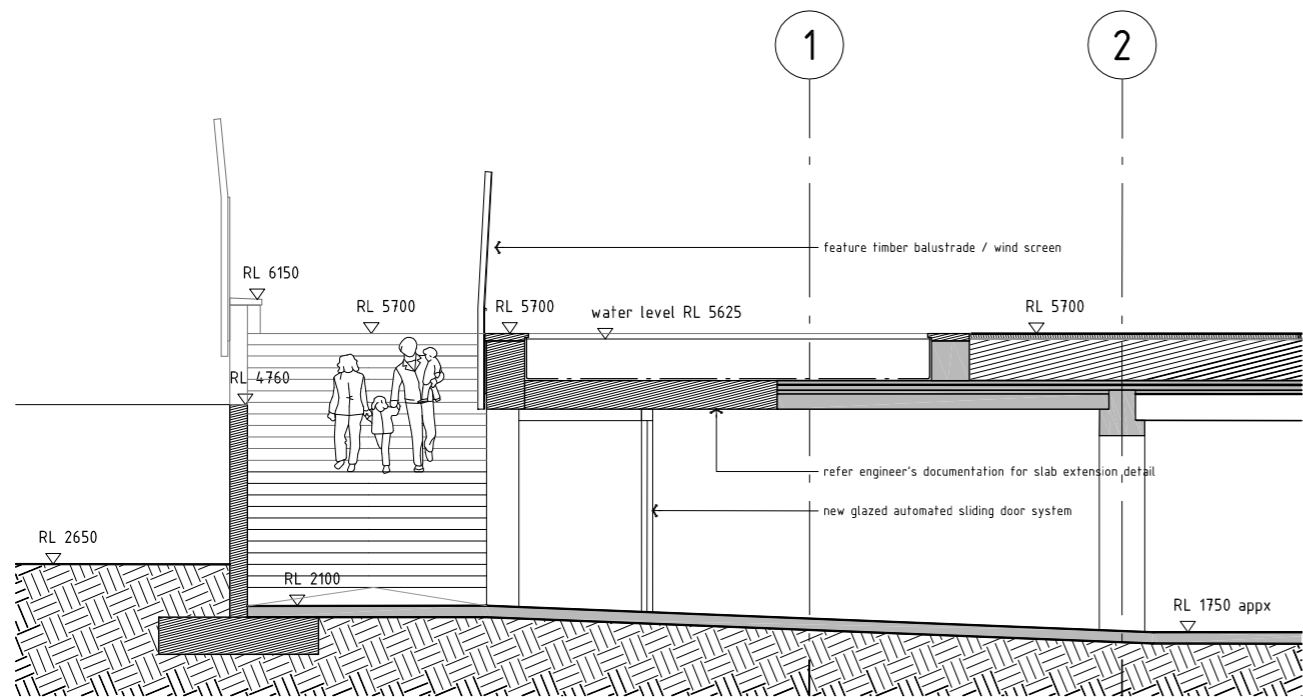
drawing no.
AR RC 2-00

project name:
Frank Kitts Park

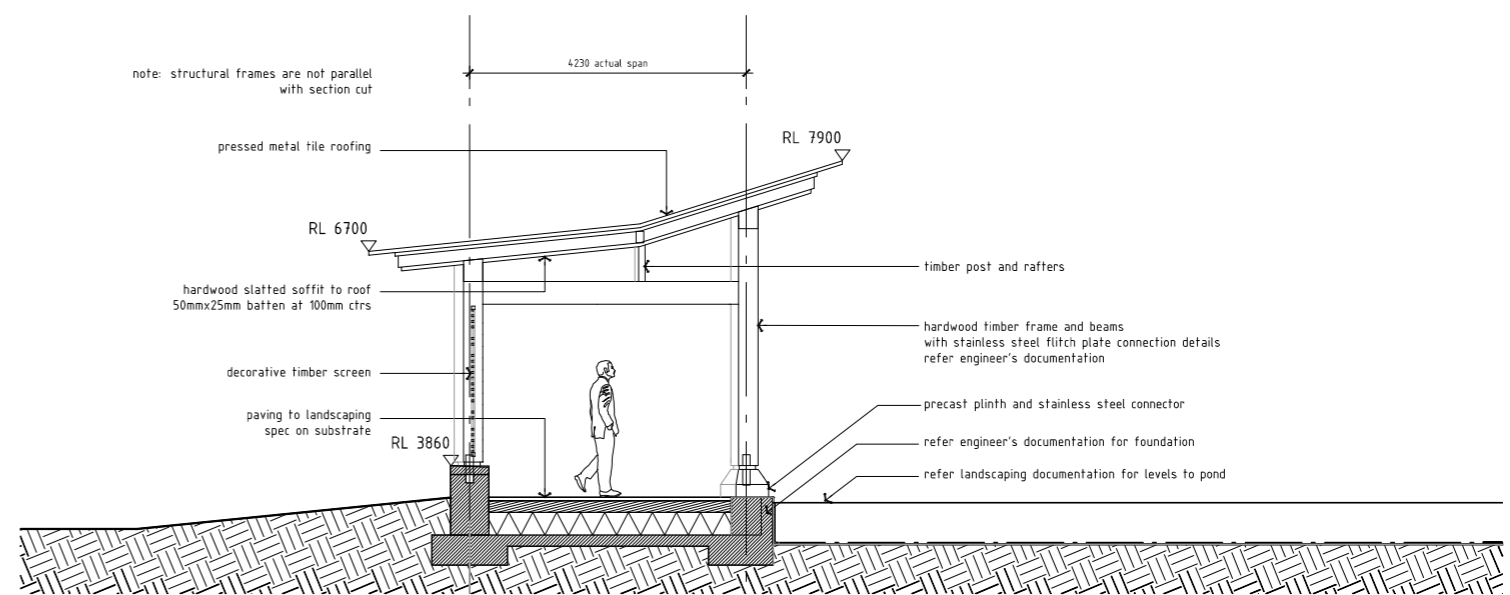
client:
Wellington Waterfront Limited+
Wellington Chinese Garden Society

POSITIVELY
Wellington
WATERFRONT

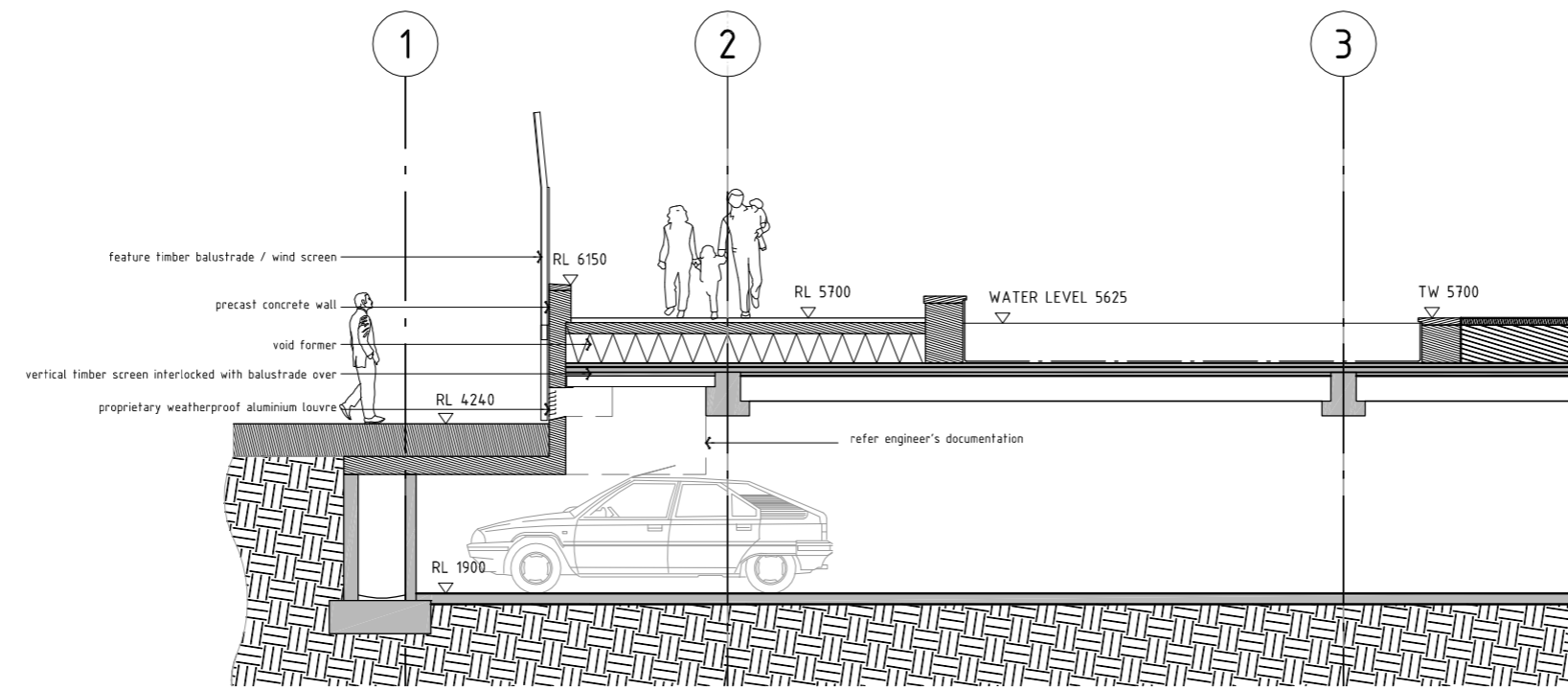
惠靈頓林園協會
Wellington Chinese Garden Society Inc.



1 section 1 car park entry



2 section 2 at gallery



3 section 3 at carpark vent/garden

consultant team:

engineer - structural:
dunning thornton consultants limited

engineer - civil, services + environmental:
aurecon

engineer - lighting:
sinclair knight merz

quantity surveyor
rider levett bucknell

landscape architect:
wraight + associates limited

architect:
athfield architects limited

garden consultant:
duncan campbell

65 CAMBRIDGE TERRACE
CHRISTCHURCH 8013
PO BOX 3724
CHRISTCHURCH 8140
NEW ZEALAND
TEL 64 3 377 2007
FAX 64 3 377 2009

105 AMRITSAR STREET
WELLINGTON 6035
PO BOX 3364
WELLINGTON 6140
NEW ZEALAND
TEL 64 4 499 1727
FAX 64 4 499 1960

athfield
architects
limited

drawn by:	issue	amendment	by	ch.	date
	A	RC CLIENT REVIEW	JC		04.02.16

drawing title: Car park edge sections 1-3

project name: Frank Kitts Park

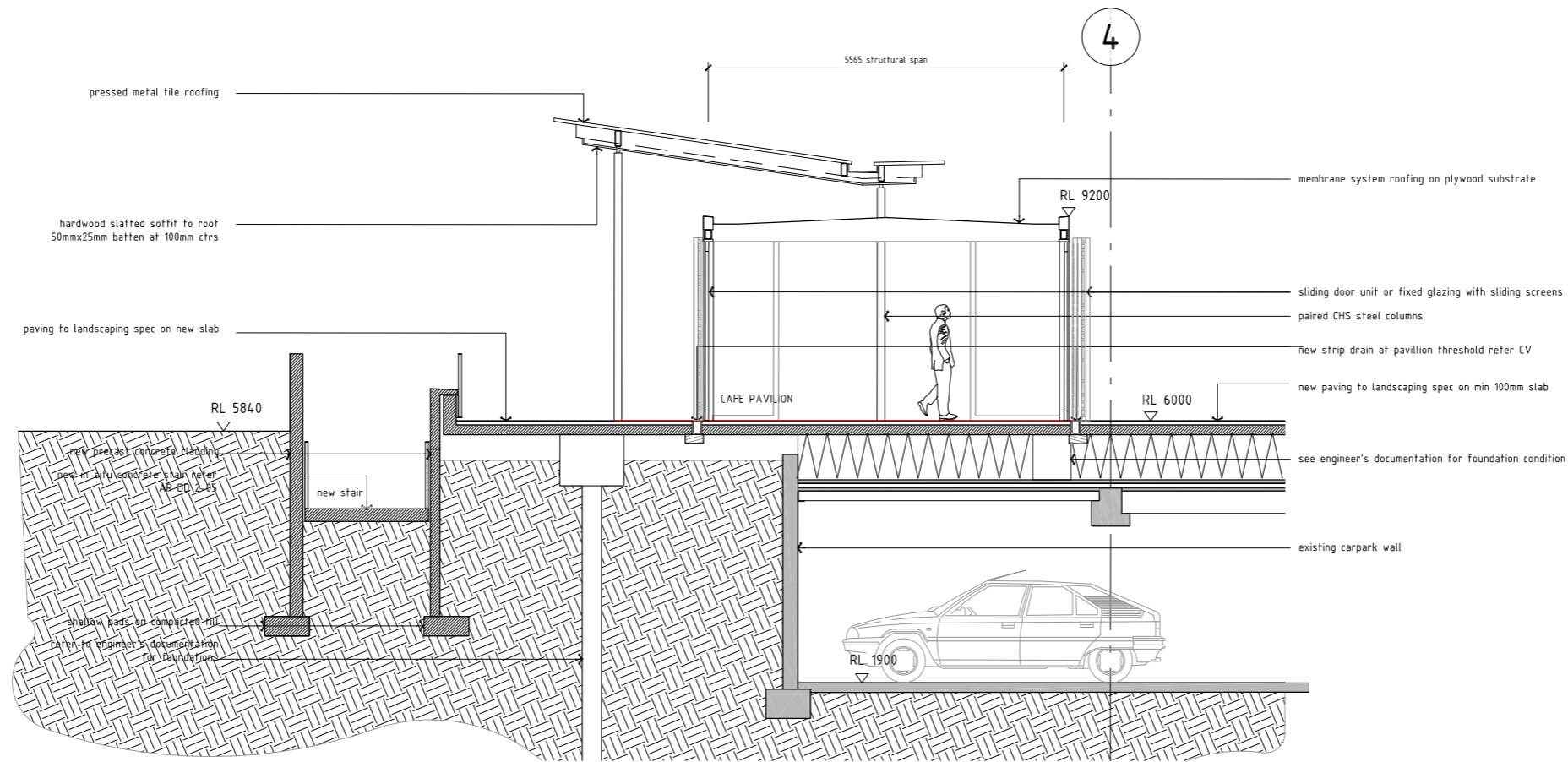
client: Wellington Waterfront Limited+ Wellington Chinese Garden Society

north + scale: 1:50@A1 1:100@A3

drawing no. AR RC 2-01

POSITIVELY Wellington WATERFRONT

惠靈頓林園協會 Wellington Chinese Garden Society Inc.



4 section 4 at new stair + cafe pavilion

consultant team:

engineer – structural:
dunning thornton consultants limited

engineer – civil, services + environmental:
aurecon

engineer – lighting:
sinclair knight merz

quantity surveyor
rider levett bucknell

landscape architect:
wraight + associates limited

architect:
athfield architects limited

garden consultant:
duncan campbell

65 CAMBRIDGE TERRACE
CHRISTCHURCH 8013
PO BOX 3724
CHRISTCHURCH 8140
NEW ZEALAND
TEL 64 3 377 2007
FAX 64 3 377 2009

105 AMRITSAR STREET
WELLINGTON 6035
PO BOX 3364
WELLINGTON 6140
NEW ZEALAND
TEL 64 4 499 1727
FAX 64 4 499 1960

athfield
architects
limited

drawn by:	issue	amendment	by	ch.	date
	A	RC CLIENT REVIEW	JC		04.02.16
	B	RESOURCE CONSENT	JC		11.04.16

drawing title:
Car park edge section 4

project name:
Frank Kitts Park

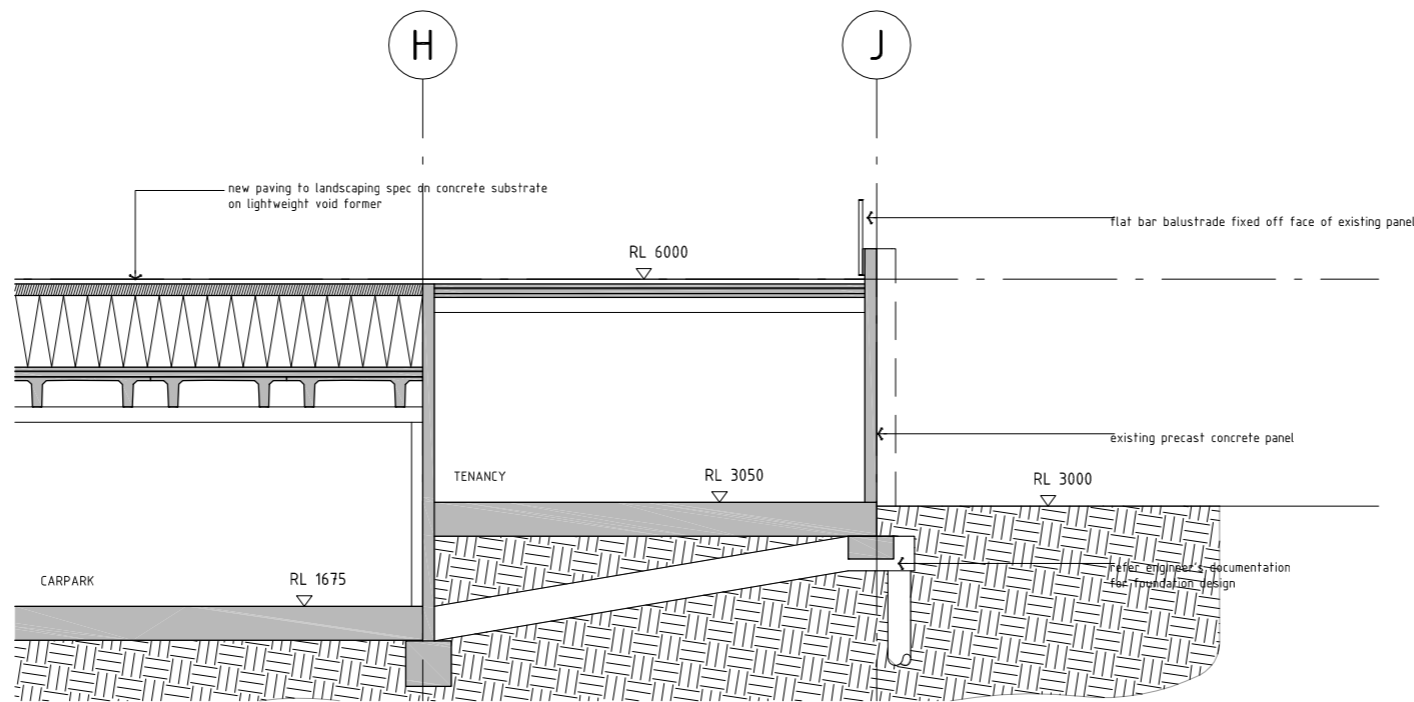
client:
Wellington Waterfront Limited+
Wellington Chinese Garden Society

north + scale:
1:50@A1 1:100@A3

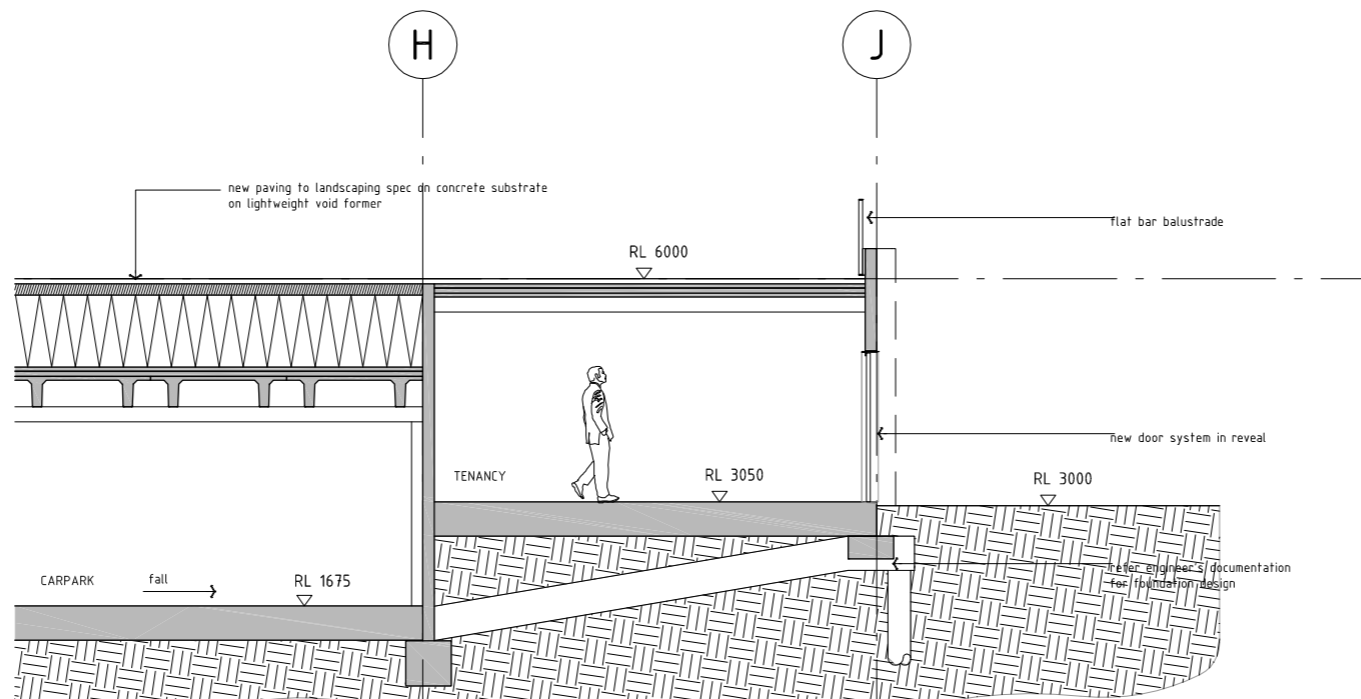
drawing no.
AR RC 2-02

POSITIVELY Wellington WATERFRONT

惠靈頓林園協會
Wellington Chinese Garden Society Inc.



7 section 7 at panel - promenade edge



8 section 8 at door - promenade edge

consultant team:

engineer - structural:
dunning thornton consultants limited

engineer - civil, services + environmental:
aurecon

engineer - lighting:
sinclair knight merz

quantity surveyor:
rider levett bucknell

landscape architect:
wright + associates limited

architect:
athfield architects limited

garden consultant:
duncan campbell

65 CAMBRIDGE TERRACE
CHRISTCHURCH 8015
PO BOX 3724
CHRISTCHURCH 8140
NEW ZEALAND
TEL 64 3 377 2007
FAX 64 3 377 2009

105 AMRITSAR STREET
WELLINGTON 6035
PO BOX 3364
WELLINGTON 6140
NEW ZEALAND
TEL 64 4 499 1727
FAX 64 4 499 1960

athfield
architects
limited

drawn by:	issue	amendment	by	ch.	date
	A	RC CLIENT REVIEW	JC		04.02.16
	B	RESOURCE CONSENT	JC		11.04.16

drawing title:
Car park edge section 7 + 8

project name:
Frank Kitts Park

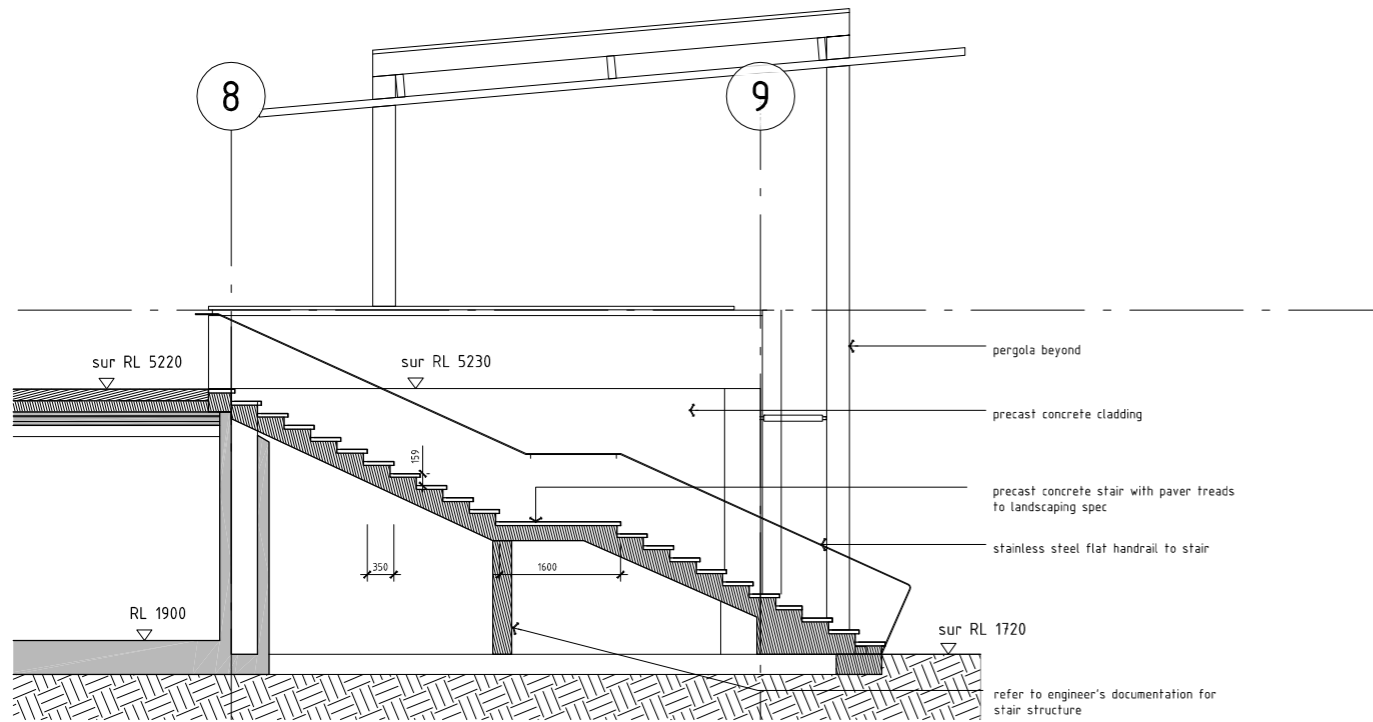
client:
Wellington Waterfront Limited+
Wellington Chinese Garden Society

north + scale:
150@A1 1:100@A3

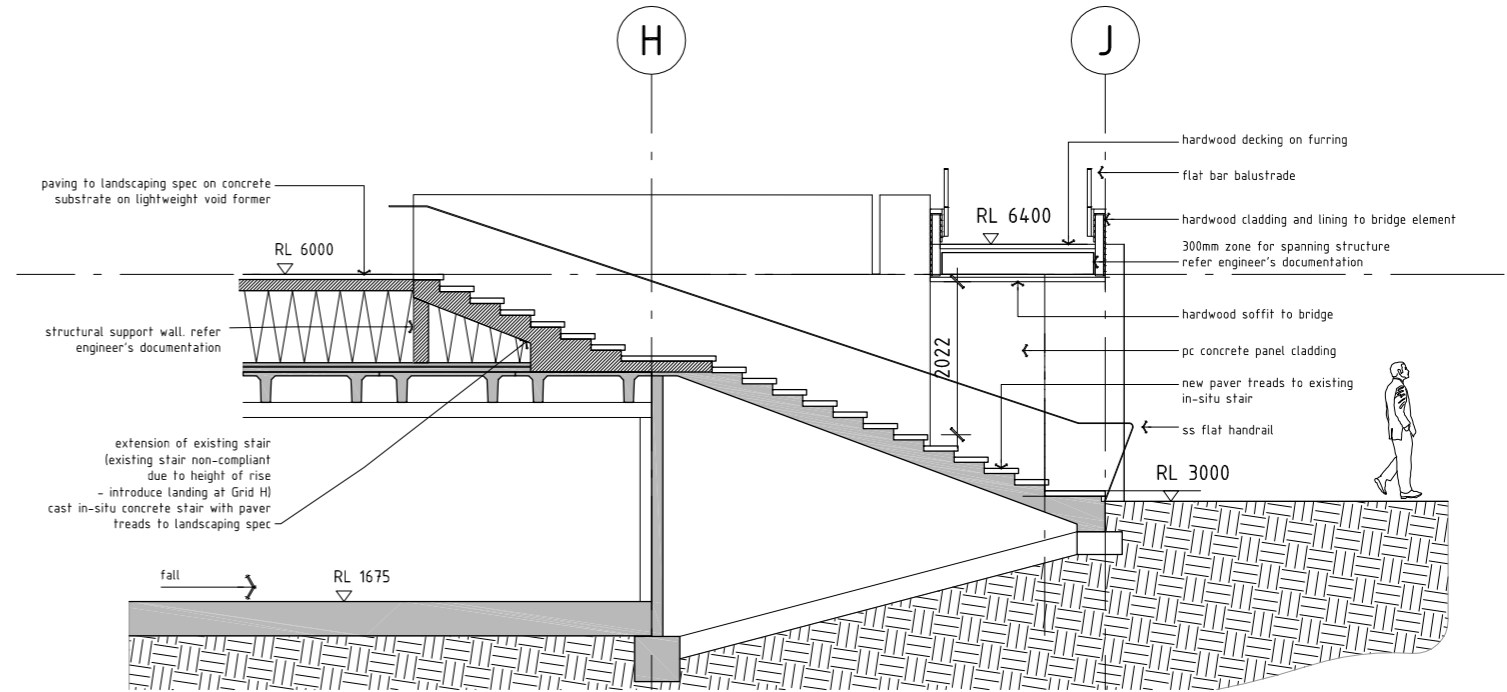
drawing no.
AR RC 2-04

POSITIVELY Wellington WATERFRONT

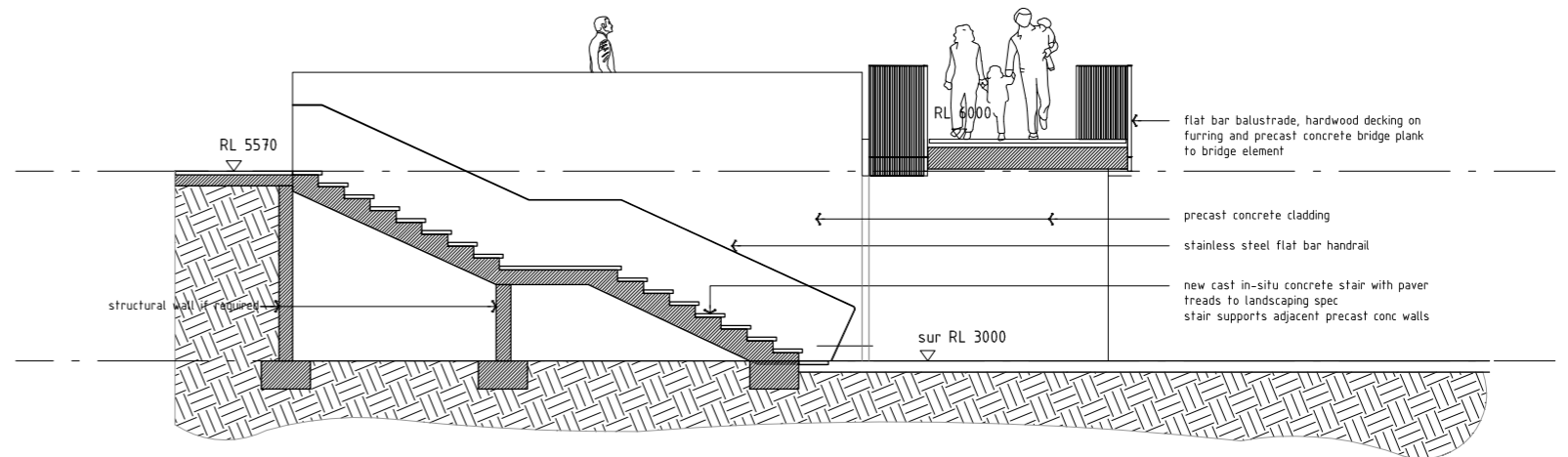
惠靈頓林園協會
Wellington Chinese Garden Society Inc.



9 section 9 at lagoon pergola - stair 1



10 section 10 at promenade edge - stair 3



11 section 11 at promenade edge - stair 4

consultant team:

engineer - structural:
dunning thornton consultants limited

landscape architect:
wraight + associates limited

engineer - civil, services + environmental:
aurecon

architect:
athfield architects limited

engineer - lighting:
sinclair knight merz

garden consultant:
duncan campbell

quantity surveyor
rider levett bucknell

65 CAMBRIDGE TERRACE
CHRISTCHURCH 8013
PO BOX 3724
CHRISTCHURCH 8140
NEW ZEALAND
TEL 64 3 377 2007
FAX 64 3 377 2009

105 AMRITSAR STREET
WELLINGTON 6035
PO BOX 3364
WELLINGTON 6140
NEW ZEALAND
TEL 64 4 499 1727
FAX 64 4 499 1960

athfield
architects
limited

drawn by:	issue	amendment	by	ch.	date
	A	RC CLIENT REVIEW	JC		04.02.16
	B	RESOURCE CONSENT	JC		11.04.16

drawing title:
Stair sections 9-12

project name:
Frank Kitts Park

north + scale:
1:50@A1 1:100@A3

client:
Wellington Waterfront Limited+
Wellington Chinese Garden Society

drawing no.
AR RC 2-05

POSITIVELY Wellington WATERFRONT
惠靈頓林園協會
Wellington Chinese Garden Society Inc.