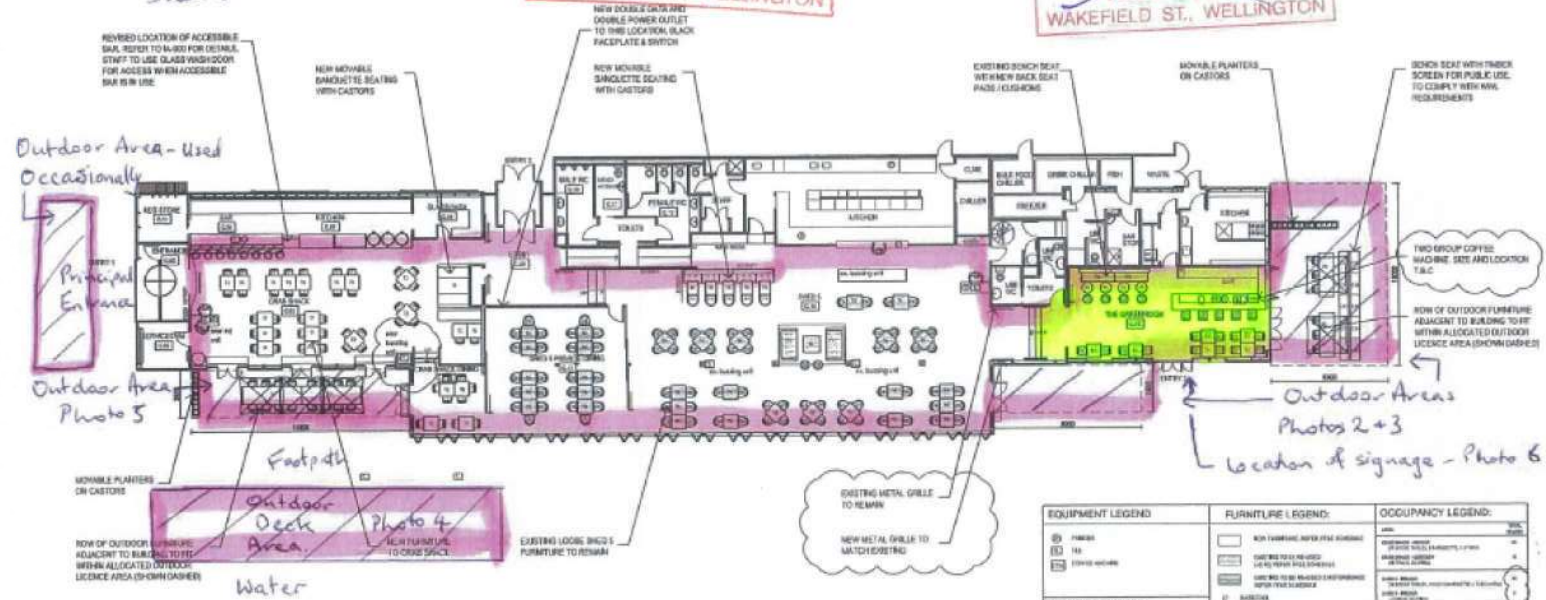


Appendix II  
Licensed and Outdoor Areas  
Shed 5

WELLINGTON CITY COUNCIL  
PUBLIC HEALTH  
16 DEC 2016  
RECEIVED  
WAKEFIELD ST., WELLINGTON

WELLINGTON CITY COUNCIL  
PUBLIC HEALTH  
~~30 JUN 2014~~  
~~RECEIVED~~  
WAKEFIELD ST., WELLINGTON



EQUIPMENT LEGEND	FURNITURE LEGEND	OCCUPANCY LEGEND
<ul style="list-style-type: none"> <li>1. FURNACE</li> <li>2. TV</li> <li>3. STOVE</li> </ul>	<ul style="list-style-type: none"> <li>1. NEW FURNITURE AFTER YEAR 1/2020</li> <li>2. EXISTING FURNITURE TO REMAIN</li> <li>3. EXISTING FURNITURE TO BE REPLACED</li> <li>4. EXISTING FURNITURE TO BE REPLACED AFTER YEAR 1/2020</li> </ul>	<ul style="list-style-type: none"> <li>1. PUBLIC</li> <li>2. PRIVATE</li> <li>3. RESTAURANT</li> <li>4. BAR</li> <li>5. OFFICE</li> <li>6. STORAGE</li> <li>7. WORKSHOP</li> <li>8. OTHER</li> </ul>
<p><b>FURNITURE NOTES:</b></p> <ol style="list-style-type: none"> <li>1. ALL NEW FURNITURE MUST BE COMPLIANT WITH THE REQUIREMENTS OF THE FIRE LABELLING ACT 2002.</li> <li>2. ALL NEW FURNITURE MUST BE COMPLIANT WITH THE REQUIREMENTS OF THE FIRE LABELLING ACT 2002.</li> <li>3. ALL NEW FURNITURE MUST BE COMPLIANT WITH THE REQUIREMENTS OF THE FIRE LABELLING ACT 2002.</li> <li>4. ALL NEW FURNITURE MUST BE COMPLIANT WITH THE REQUIREMENTS OF THE FIRE LABELLING ACT 2002.</li> <li>5. ALL NEW FURNITURE MUST BE COMPLIANT WITH THE REQUIREMENTS OF THE FIRE LABELLING ACT 2002.</li> <li>6. ALL NEW FURNITURE MUST BE COMPLIANT WITH THE REQUIREMENTS OF THE FIRE LABELLING ACT 2002.</li> <li>7. ALL NEW FURNITURE MUST BE COMPLIANT WITH THE REQUIREMENTS OF THE FIRE LABELLING ACT 2002.</li> <li>8. ALL NEW FURNITURE MUST BE COMPLIANT WITH THE REQUIREMENTS OF THE FIRE LABELLING ACT 2002.</li> <li>9. ALL NEW FURNITURE MUST BE COMPLIANT WITH THE REQUIREMENTS OF THE FIRE LABELLING ACT 2002.</li> <li>10. ALL NEW FURNITURE MUST BE COMPLIANT WITH THE REQUIREMENTS OF THE FIRE LABELLING ACT 2002.</li> </ol>		

Item No.	Description	QTY	Unit	Brand	Value	Notes
1	FOR BUILDING CONCRETE	1	m <sup>2</sup>			
2	FOR BUILDING CONCRETE	1	m <sup>2</sup>			
3	FOR BUILDING CONCRETE	1	m <sup>2</sup>			
4	FOR BUILDING CONCRETE	1	m <sup>2</sup>			
5	FOR BUILDING CONCRETE	1	m <sup>2</sup>			
6	FOR BUILDING CONCRETE	1	m <sup>2</sup>			

**CONFIRMED Licensed Area**  
 Cathy Scott Shed 5 &  
 Authorised Agent for Crab Shack  
 Licensee: Shed 5 Restaurant & Bar Ltd  
 Date: 23/01/2020

