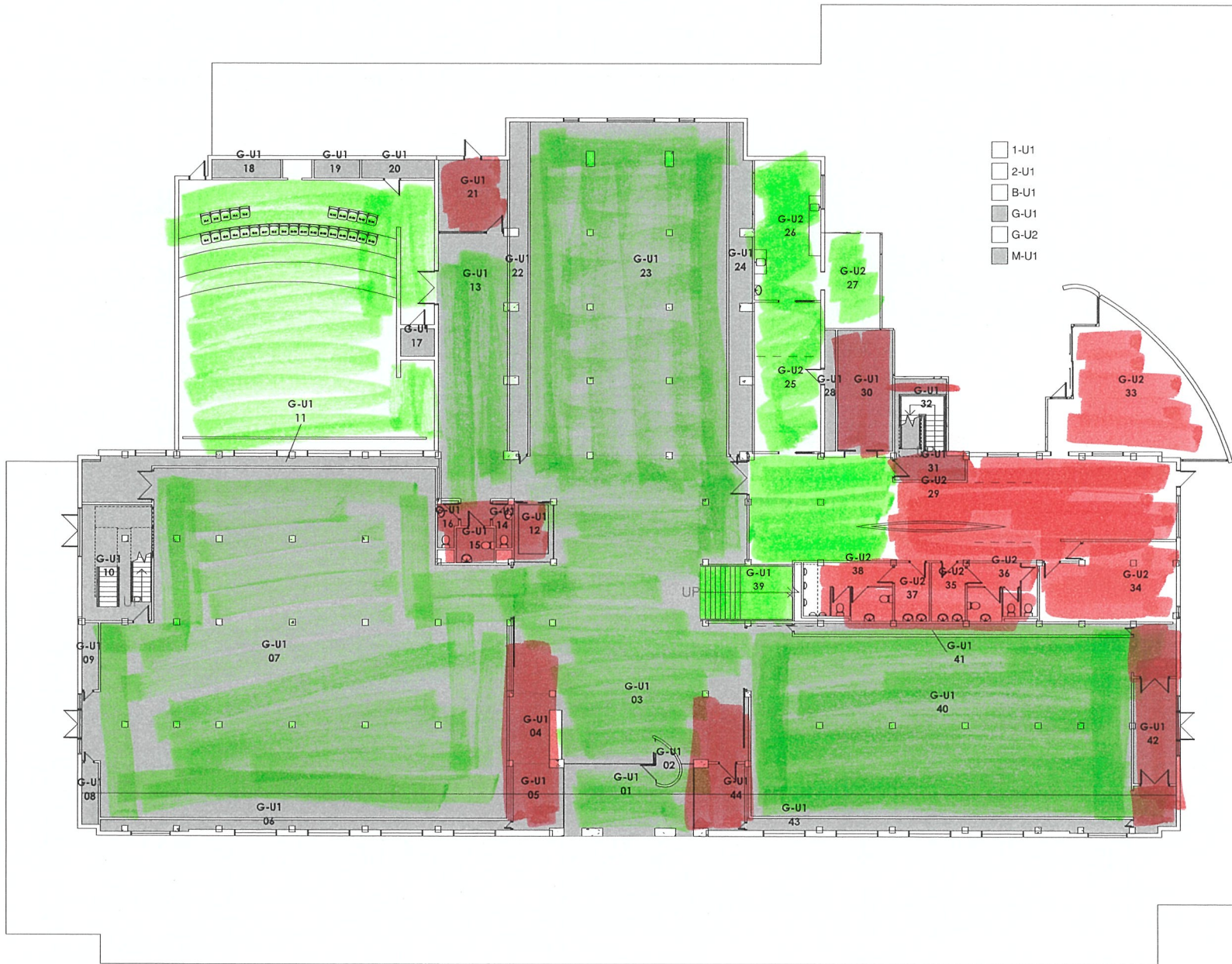


Ground Floorplan

6-12-2022

All green areas = Alcohol Zone.

1019-0408-G-City Gallery



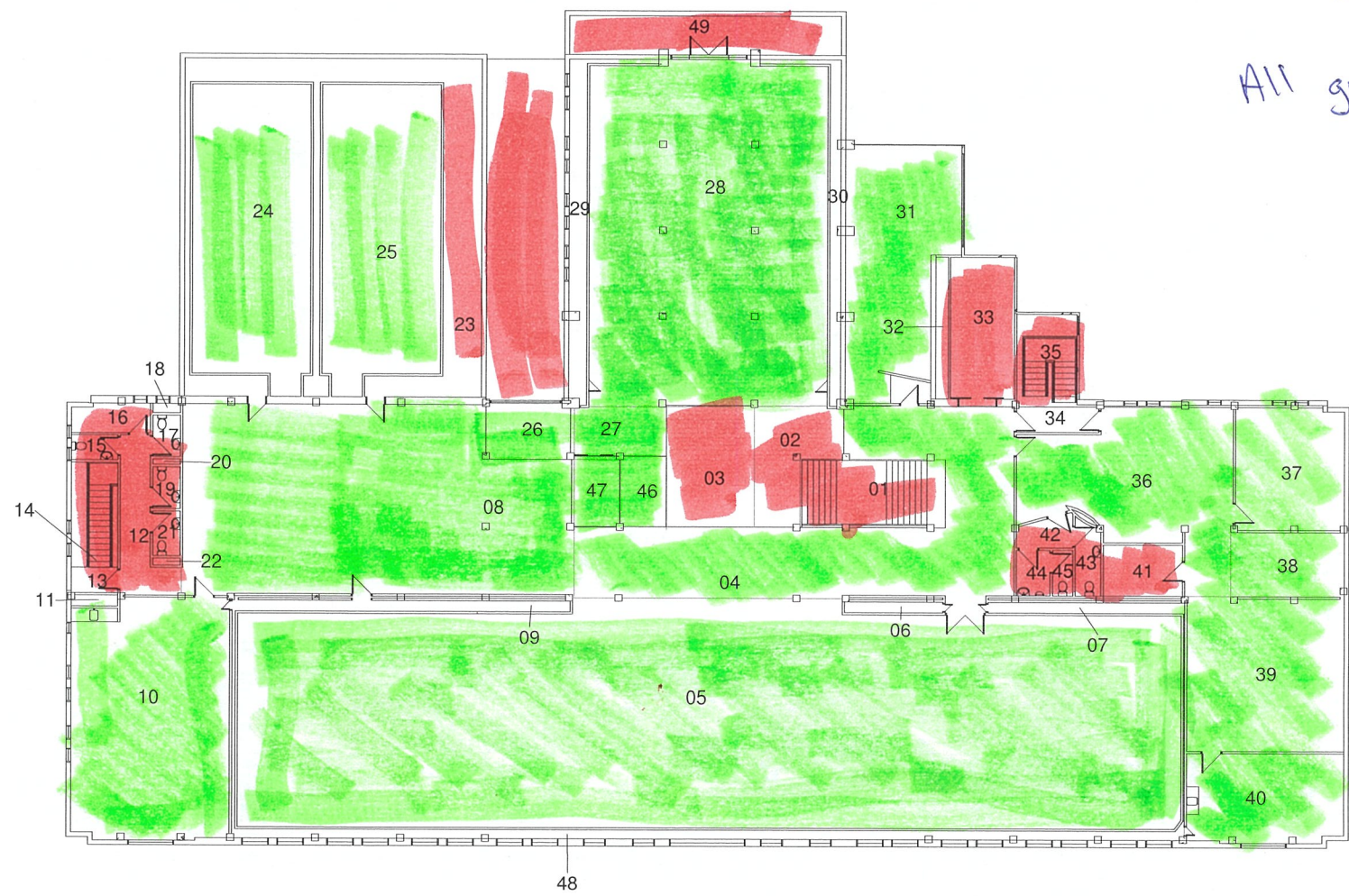
City Gallery Room Areas Ground level			
Tenancy	Number	Name	Area
G-U1	01	Entry	21.07 m <sup>2</sup>
G-U1	02	Windlock	2.03 m <sup>2</sup>
G-U1	03	Hall	158.06 m <sup>2</sup>
G-U1	04	Reception	8.92 m <sup>2</sup>
G-U1	05	Store	8.19 m <sup>2</sup>
G-U1	06	Gallery Cavity	10.09 m <sup>2</sup>
G-U1	07	West Gallery	321.7 m <sup>2</sup>
G-U1	08	Ramp	2.56 m <sup>2</sup>
G-U1	09	Ramp	2.79 m <sup>2</sup>
G-U1	10	Stairs	20.41 m <sup>2</sup>
G-U1	11	Gallery Cavity & Store	14.69 m <sup>2</sup>
G-U1	12	Lift Shaft	5.97 m <sup>2</sup>
G-U1	13	Auditorium Lobby	47.69 m <sup>2</sup>
G-U1	14	WC	2.11 m <sup>2</sup>
G-U1	15	Acc WC	3.36 m <sup>2</sup>
G-U1	16	WC	2.27 m <sup>2</sup>
G-U1	17	Lift Shaft	2.37 m <sup>2</sup>
G-U1	18	Riser	3.16 m <sup>2</sup>
G-U1	19	Riser	2.1 m <sup>2</sup>
G-U1	20	Store	3.34 m <sup>2</sup>
G-U1	21	Porch	12.45 m <sup>2</sup>
G-U1	22	Gallery Cavity	14.99 m <sup>2</sup>
G-U1	23	Hancock Gallery	163.21 m <sup>2</sup>
G-U1	24	Gallery Cavity	17.95 m <sup>2</sup>
G-U1	28	Shaft	3.33 m <sup>2</sup>
G-U1	30	Goods Lift	16.68 m <sup>2</sup>
G-U1	31	Landing	3.99 m <sup>2</sup>
G-U1	32	Stair	10.21 m <sup>2</sup>
G-U1	39	Stair	12.92 m <sup>2</sup>
G-U1	40	East Gallery	184.85 m <sup>2</sup>
G-U1	41	Gallery Cavity	9.27 m <sup>2</sup>
G-U1	42	Exit Lobby	11.51 m <sup>2</sup>
G-U1	43	Gallery Cavity	11.57 m <sup>2</sup>
G-U1	44	Store	8.23 m <sup>2</sup>
G-U2	25	Plating Kitchen	24.92 m <sup>2</sup>
G-U2	26	Kitchen	23.4 m <sup>2</sup>
G-U2	27	Kitchen	13.16 m <sup>2</sup>
G-U2	29	Hall	99.58 m <sup>2</sup>
G-U2	33	Seating	42.88 m <sup>2</sup>
G-U2	34	Kitchen	25.15 m <sup>2</sup>
G-U2	35	Femal WC Lobby	5.02 m <sup>2</sup>
G-U2	36	Female WC	9.88 m <sup>2</sup>
G-U2	37	Male WC Lobby	5.16 m <sup>2</sup>
G-U2	38	Male WC	12.57 m <sup>2</sup>
Grand total: 44			1385.76 m <sup>2</sup>

Wellington City Council Received:  
9/12/2022

1st Floor. 6.12.2022.  
Floorplan.

All green areas =  
Alcohol zone

1019-0408-L1-City Gallery



City Gallery Room Areas level One		
Number	Name	Area
01	Stair	18.34 m <sup>2</sup>
02	Lower Landing	14.53 m <sup>2</sup>
03	Void	19.68 m <sup>2</sup>
04	Landing	83.66 m <sup>2</sup>
05	South Gallery	382.48 m <sup>2</sup>
06	Gallery Cavity	1.95 m <sup>2</sup>
07	Gallery Cavity	3.89 m <sup>2</sup>
08	Reading	128.24 m <sup>2</sup>
09	Gallery Cavity	6.73 m <sup>2</sup>
10	Classroom	69.7 m <sup>2</sup>
11	Void	0.93 m <sup>2</sup>
12	Corridor	10.53 m <sup>2</sup>
13	Landing	2.21 m <sup>2</sup>
14	Stair	9.05 m <sup>2</sup>
15	WC	2.2 m <sup>2</sup>
16	Store	4.12 m <sup>2</sup>
17	WC	2.16 m <sup>2</sup>
18	Void	0.48 m <sup>2</sup>
19	WC	2.17 m <sup>2</sup>
20	Void	0.28 m <sup>2</sup>
21	WC	2.27 m <sup>2</sup>
22	Void	0.36 m <sup>2</sup>
23	Gallery Cavity	50.03 m <sup>2</sup>
24	Deane Gallery	64.48 m <sup>2</sup>
25	Michael Hirschfeld Gallery	64.48 m <sup>2</sup>
26	Ramp	9.01 m <sup>2</sup>
27	Lift Lobby	8.55 m <sup>2</sup>
28	North Gallery	150.31 m <sup>2</sup>
29	Gallery Cavity	11.71 m <sup>2</sup>
30	Gallery Cavity	7.31 m <sup>2</sup>
31	BoardRoom	46.62 m <sup>2</sup>
32	Void	3.33 m <sup>2</sup>
33	Goods Lift	16.68 m <sup>2</sup>
34	Stair Lobby	3.99 m <sup>2</sup>
35	Stair	10.21 m <sup>2</sup>
36	F68	50.88 m <sup>2</sup>
37	F75	25.03 m <sup>2</sup>
38	F76	13.42 m <sup>2</sup>
39	F77	44.86 m <sup>2</sup>
40	F78	25.49 m <sup>2</sup>
41	F74	7.51 m <sup>2</sup>
42	Toilet Lobby	2.95 m <sup>2</sup>
43	WC Female	3.4 m <sup>2</sup>
44	Toilet Male	2.87 m <sup>2</sup>
45	WC Male	1.73 m <sup>2</sup>
46	Ramp	6.06 m <sup>2</sup>
47	Lift	5.7 m <sup>2</sup>
48	Gallery Cavity	15.73 m <sup>2</sup>
49	Balcony	19.62 m <sup>2</sup>

Grand total: 49 1437.91 m<sup>2</sup>

Wellington City Council Received:  
9/12/2022

0 1 200 2 4 8 10m

City Gallery  
Harris Street, Wellington Central

Scale: 1 : 200 Plotted 29/04/2016 11:03:16 a.m.

Property: **Absolutely POSITIVELY** Wellington

Sheet Size: A3 Source of Plans: Archival Plans Issue Date: 27-04-2016

Property Code - Building Code - Level - Tenancy - Department: 1019-0408-L1 View Ref: Rev