
ORDINARY MEETING

OF

**OUTER GREEN BELT MANAGEMENT PLAN HEARING
SUBCOMMITTEE**

MINUTE ITEM ATTACHMENTS

Time: 1:30pm
Date: Tuesday, 16 April 2019
Venue: Ngake (16.09)
Level 16, Tahiwī
113 The Terrace
Wellington

Business

Page No.

2.2 Outer Green Belt Management Plan Oral Forum 16 April 2019

- | | | |
|----|------------------------------------|----|
| 1. | Gordon Somerville tabled documents | 2 |
| 2. | Jon Devine tabled documents | 12 |

From Gordon Somerville.



From Gordon Somerville
wet



Progress Hill - Track Damage - 16/04/19

From Gordon Somerville.
D/S

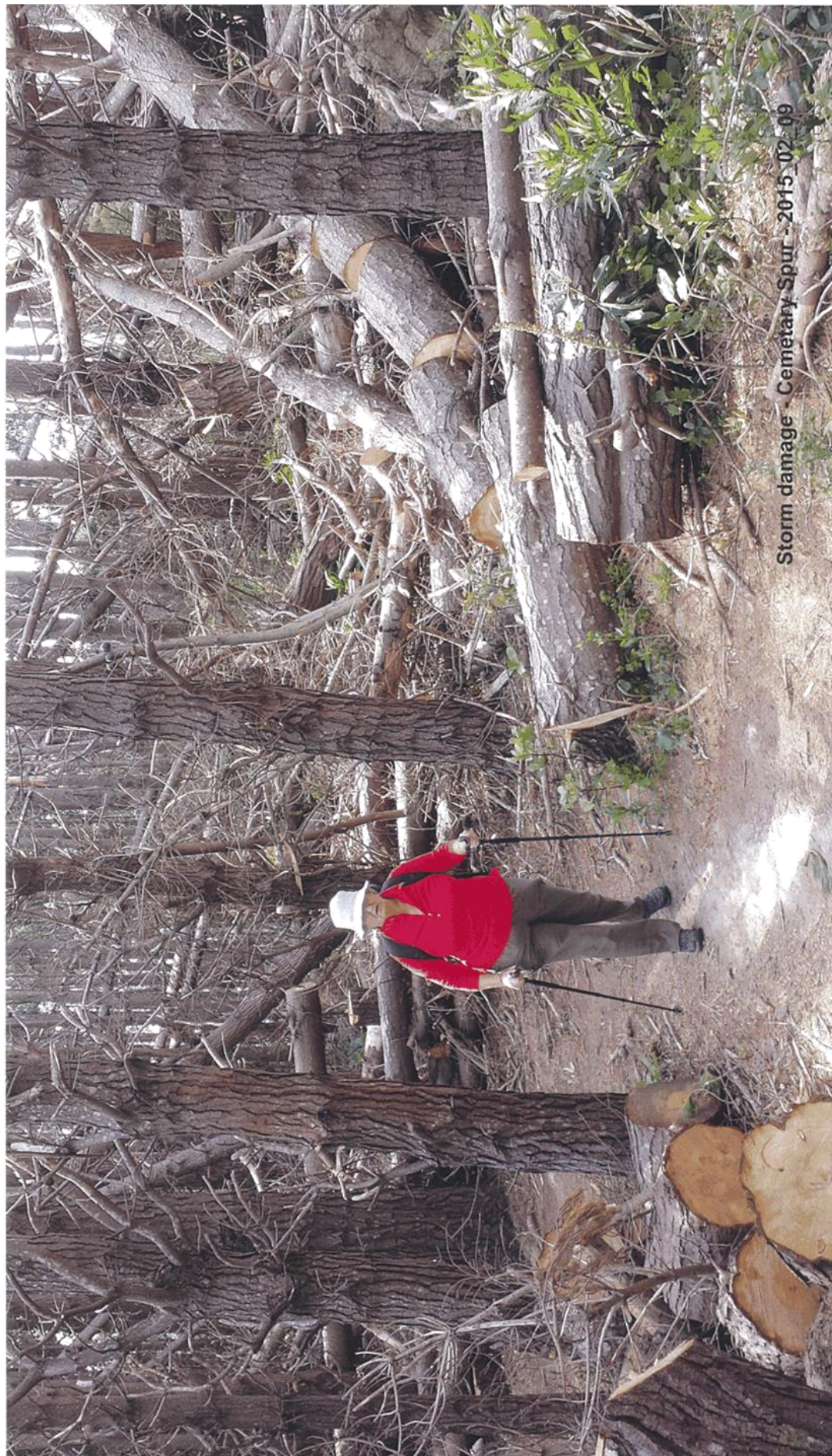


Johnston Hill Downhill Mountain Bike track damage - 201

From Gordon Somerville.
Above cemetery (now, several years later) — pest plants the prob.



From border Somerville
Above Cemetery. (soon after)



From Gordon Somerville.
unsanctioned track in S-Hill pine forest, 3m wide, 15 spacing.



John and Gill pine forest - 3m wide Bike track - 2019_04_1

From Gorda Somerville.
From Chertwell Drive



From Gordon Somerville,
Kilmister Heights



Kilmister Heights Bike track and farm road - 2019_02_16

From Gode Somerville
From Chertwell Drive



Chertwell transmission road - after track maintenance - 2019_04_14

From Gordon Somerville - reger area in WMBT area.



Tabled. John Davine

Outer Green Belt Management Plan 2019

Submission specific to the inclusion of the Mountain Bike Tracks on Johnston Hill.

I would like to make the following points;

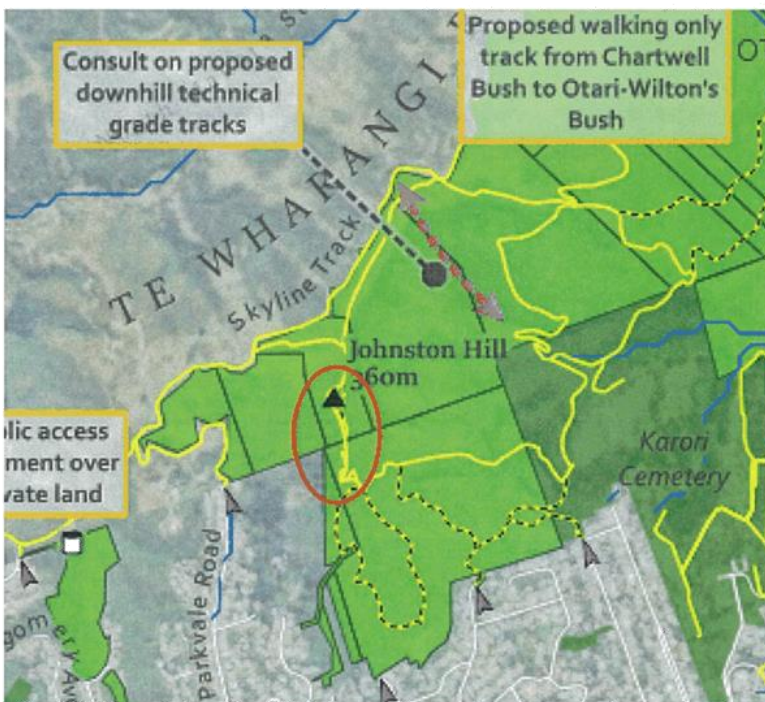
Walking tracks

On Page 140 of the Plan it correctly states; "Tracks in Ōtari Wilton's Bush and on Johnston Hill have been designated walking-only under the Open Space Access Plan 2016 as being unsuitable for biking."

The Sector 4 Map on page 146 incorrectly notes the upper part of the Penlington Track on the ridgeline has been denoted as a "Shared Use Track". This has previously never been the case as Johnston Hill signage has always had a "No Cycling" sign included. The upper part of this track on the ridge is primarily stairs and is unsuited for cycling.

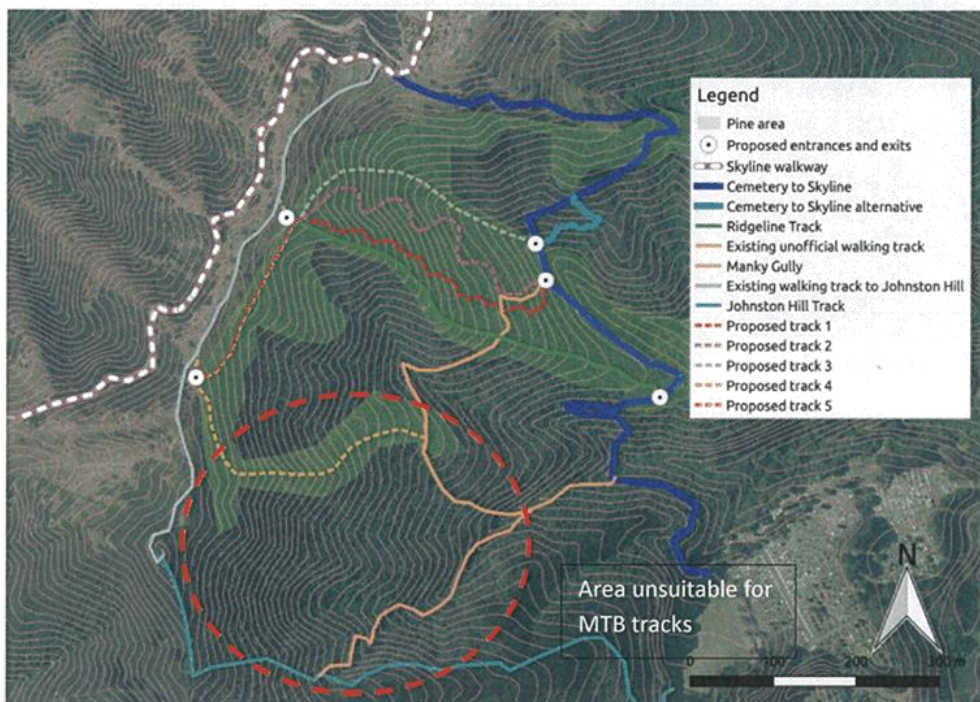
The erosion of walking tracks in Wellington is of significant concern to the community. This track is frequented by the public extensively, and is one of the most used walking tracks in these hills.

There is a significant safety issue in having dual use tracks, as the most successful mountain bike tracks are specific use tracks.



As such, I submit that the use of the Johnston Hill track for uphill cycling, and tracks 4 and 5 as located are unsuitable for mountain bike tracks they will affect the ecology and potential for bush regeneration.

Should the consideration for a mountain bike area be included in the Management Plan, I would submit that it should be qualified with an appropriate area rather than a general description open to interpretation.



Jon Devine
Karori, Wellington



Track 4 area



Track 4 area