

Quarterly Review – Wellington Zoo Trust

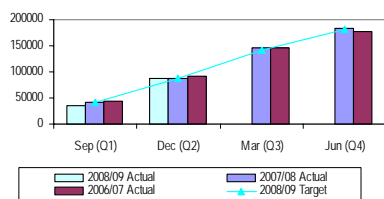
Wellington Zoo Trust has presented its report for the quarter ended 31 December 2008 for review. A summary of key findings is presented below and the report is attached.

Highlights: achievements

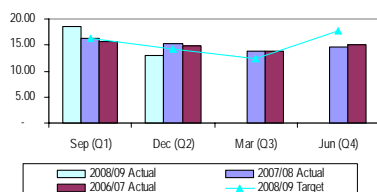
- In October, the Zoo hosted renowned primatologist Dr Jane Goodall at a sold-out Wild Theatre, with significant additional media coverage through Newstalk ZB and Campbell Live
- Visitors numbers for the quarter were 51,565 which was 4,666 (10%) ahead of budget
- In November, the Zoo's Bush Builders Project was awarded a DOC award in conservation, education and advocacy

Performance

Wellington Zoo visitor numbers
(cumulative)



Council subsidy per Wellington Zoo visitor
(cumulative)



Macro Key Performance Indicators

The following KPI's have been agreed as part of the Statement of Intent as required by the Local Government Act 2002

Measure	Annual Target	Quarter Target	Quarter Actual
Number of visitors per year	180,560	46,899	51,565
Number of school visits (YTD)	> 14,700	n/a	9,192
Conservation Programme managed species	> 38%	n/a	42%
School learning outcomes - effectiveness	> 97%	n/a	100%
Average WCC subsidy per visitor	\$14.88	\$14.33	\$13.03
Average retail income per retail visitor (YTD)	> \$8.60	n/a	\$8.99
Average income per visitor (excluding Council grant)	> \$11.71	n/a	\$13.82
Ratio of Trust generated income as % of WCC grant	79%	n/a	90%

- The subsidy / customer is based upon the operating grant from WCC
- The retail income per visitor relates to actual purchases

Activities during the quarter

- Construction of the Nest continued, the first phase of the Africa Unity project was completed, planning for the Catering & Function Facilities project began, the Power project was completed and assembly of the Meet the Locals design team began
- During the quarter, two purebred dingo pups, a Morepork and three spider monkeys arrived, and births included 13 Australian Shelducks, 2 North Island Kaka, two keas and five Red rumped agouti
- Recognition of the calibre of Zoo staff continued with the CEO being accepted into Stanford University's Executive Program for Non Profit Leaders and the Manager Commercial Development being accepted into the 2009 New Zealand Leadership Programme

Financial Commentary

- Operating surplus for the quarter was \$248k, due to operating income being 13% ahead of budget as a result of the good visitation and an increase in admission prices on October 1
- The Zoo has received \$413k external sponsorship funding in the 2008/09 year to date against an annual target of \$569k.

Statement of Financial Performance

For the quarter ended 31 December 2008

\$'000	Q2		YTD Actual	YTD Budget	FY Budget
	Actual	Budget			
Income	1,490	1,245	2,958	2,387	5,371
Expenditure	1,360	1,185	2,487	2,398	5,371
Total Surplus	130	60	471	(11)	-
Operating Surplus	248	60	268	(11)	-
Operating Margin	17%	5%	9%	0%	-

Statement of Financial Position

As at 31 December 2008

\$'000	08/09 YTD		07/08 Y/E		FY Budget
	Actual	Budget	Actual	Budget	
Current assets	1,582	1,721	1,721	1,083	1,083
Non-current assets	465	129	129	8	8
Current liabilities	569	861	861	1,120	1,120
Non-current liabilities	57	39	39	57	57
Equity	1,421	950	950	(86)	(86)
Current ratio	2.8 : 1		2 : 1		1 : 1
Equity ratio	69%		51%		8%

Statement of Cash Flows

For the quarter ended 31 December 2008

\$'000	08/09 YTD		07/08 Y/E		FY Budget
	Actual	Budget	Actual	Budget	
Operating	30	-	76	(96)	(96)
Investing	-	-	(71)	-	-
Financing	-	-	-	-	-
Net	30	-	5	(96)	(96)
Closing balance	1,449	1,419	1,419	958	958

Note: FY Budgets are as approved in the Business Plan.

Contact officer:

Ian Clements

Profile – Wellington Zoo Trust

WELLINGTON



History of Wellington Zoo

100 years old - the oldest zoo in New Zealand

Wellington Zoo was founded in April 1906 when a young lion was presented to Wellington City by the Bostok and Wombwell Circus. The lion, named 'King Dick', after Prime Minister Richard Seddon, who had died that year, was initially housed at Wellington's Botanic Gardens along with a small collection of animals. In 1907 the City Council developed a part of Newtown Park into New Zealand's first zoo. The Zoo grew rapidly, and by 1912 around 500 animals were housed in cages, aviaries and a huge sea lion pool.

Wellington Zoological Society

This society was largely responsible for the early growth and development of the Zoo through its donations of large numbers of animals and plants. The Second World War slowed down the Zoo's development until the 1950s, when the Zoo's role was to entertain the public with elephant rides, performing goats and chimpanzee tea parties.

Modern approach

In line with changing attitudes, modern zoos around the world now provide more natural environments for their animals. Wellington Zoo has extensively redeveloped the tiger, monkey, lion, chimpanzee and baboon enclosures over the past 20 years. On the Tropical River Trail visitors are surrounded by a rainforest habitat, separated only by a moat from three species of primates.

Wellington Zoo is committed to a future in conservation and education. It is actively involved in international captive breeding programmes for both native and exotic endangered species. The aim is to maintain sufficient genetic diversity to sustain viable breeding populations. Equally important is the Zoo's role in raising visitors' awareness of the importance of the conservation of its resident species through keeper talks, signage and other activities.

Entity Data

Established	2003	
Board	Lee Parkinson Denise Church (Chair) Ross Martin Frances Russell Phillip Meyer Cllr Celia Wade-Brown	<i>Term expires:</i> 30 June 2009 31 Dec 09 31 Dec 09 31 Dec 10 31 Dec 09 Oct 10
CEO	Karen Fifield	
Balance date	30 June	
Number of FTE staff	56.5	
Website	www.zoo.wellingtonzoo.com	
Type of entity	Council-settled Trust	
LGA designation	CCO	
By reason of	Board control: all trustees appointed by Council	
Council interest	\$3,511 million (\$2,687 million direct grant)	
Type of interest	Ownership of land & buildings	