
MINUTES

WEDNESDAY 25 MAY 2011

5.31PM – 7.29PM

**Council Chamber
First Floor, Town Hall
Wakefield Street
Wellington**

PRESENT:

Mayor Wade-Brown (5.31pm – 6.21pm and 6.55pm – 7.29pm)
Councillor Ahipene-Mercer (5.31pm – 7.29pm)
Councillor Best (5.31pm – 7.29pm)
Councillor Cook (5.31pm – 6.55pm)
Councillor Coughlan (5.31pm – 6.21pm and 6.55pm – 7.29pm)
Councillor Eagle (5.31pm – 7.29pm)
Councillor Foster (6.19pm – 7.29pm)
Councillor Gill (5.31pm – 7.29pm)
Councillor Lester (5.31pm – 7.29pm)
Councillor McKinnon (5.31pm – 5.43pm and 6.21pm – 7.06pm)
Councillor Marsh (5.31pm – 7.29pm)
Councillor Morrison (5.31pm – 7.29pm)
Councillor Pannett (5.31pm – 7.29pm)
Councillor Pepperell (5.31pm – 7.29pm)
Councillor Ritchie (5.31pm – 7.21 pm and 7.23pm – 7.29pm)

DEMOCRATIC SERVICES OFFICERS IN ATTENDANCE:

Svea Cunliffe-Steel – City Secretary
Maleik Edwards – Committee Adviser
Laura Pilgrim – Committee Adviser

047/11C **APOLOGIES**
(1215/11/IM)

Moved Mayor Wade-Brown, seconded Councillor Ahipene-Mercer, the motion that apologies from Councillor Foster for lateness and from Councillor McKinnon for early departure from the meeting.

The motion was put.

Voting for: Mayor Wade-Brown, Councillors Ahipene-Mercer, Best, Cook, Coughlan, Eagle, Gill, Lester, McKinnon, Marsh, Morrison, Pannett, Pepperell and Ritchie.

Voting against: Nil.

Majority Vote: 14:0

The motion was declared CARRIED.

RESOLVED:

THAT Council:

1. *Accept apologies for lateness from Councillor Foster and for an early departure by Councillor McKinnon.*

048/11C **CONFIRMATION OF MINUTES**
(1215/11/IM)

Moved Mayor Wade-Brown, seconded Councillor Marsh, the motion that the Council approve the minutes of the Extraordinary Council meeting and the Ordinary Council meeting held on Wednesday 20 April 2011, which having been circulated, be taken as read and confirmed as an accurate record of those meetings.

The motion was put.

Voting for: Mayor Wade-Brown, Councillors Ahipene-Mercer, Best, Cook, Coughlan, Eagle, Gill, Lester, McKinnon, Marsh, Morrison, Pannett, Pepperell and Ritchie.

Voting against: Nil.

Majority Vote: 14:0

The motion was declared CARRIED.

RESOLVED:

THAT Council:

- 1. Approve the minutes of the Extraordinary Council meeting and the Ordinary Council meeting held on Wednesday 20 April 2011, which having been circulated, be taken as read and confirmed as an accurate record of those meetings.*

049/11C **PRESENTATION OF APW AWARD**
(1215/11/IM)

NOTED:

Mayor Wade-Brown presented the APW Award to Jim Moriarty and gave the following speech:

E nga manuhiri tuarangi, Haere mai, haere mai.

Haere mai ra kite whakanui, I te karanga o tenei ra.

No reira, nau mai, haere mai

(To our distinguished visitors, welcome. Welcome to this special occasion in which we gather today. Welcome to you all who have arrived today.)

Jim Moriarty is a legend in Wellington, so it is most appropriate that we recognise his achievements and contribution of many years with this citizens' award.

He has explored every aspect of theatre and film, as an actor, writer, director and producer.

From Close to Home to the Edinburgh Festival, he has trod the boards, sweltered under the lights and agonised over the programme. He's toured this country and many others with high-quality professional productions, always doing the hard yards and making things work against all odds.

Whatever he has been involved with his motivation is clear – “emancipation of people – freedom.” Whether it's from the shackles of the past, the guilt of colonialism, the power of religion, the greed for money, the pressures of change, or the lack of love – in individuals, families, communities, the nation – Jim's message is one of a search for maturity, compassion and freedom.

The way Jim lives his life is testimony to this, in particular his and his partner Helen's role with the Trust, Te Rakau Hua O Te Wao, which they set up to work with young people.

They have created memorable theatre, for both participants and audiences, working with universal themes and making them particular to New Zealand, and to Wellington.

Jim and Helen and their team have made an enormous difference to the lives of many young people as they have taken high-energy and deeply searching theatre productions around the country - to marae, schools, churches, prisons - and given many young people the taste of creativity, discipline, self-worth and achievement that will stand them ready for life.

Jim, it is a great privilege for me to present you with this award as you are an Absolutely Positive Wellingtonian and a true Rangatira.

050/11C **PUBLIC PARTICIPATION**
(1215/11/IM)

NOTED:

There was no public participation.

051/11C **DEPUTATIONS**
(1215/11/IM)

NOTED:

Mr Stan Andis, President of the Strathmore Park Progressive and Beautifying Association made a representation to the Council on traffic Speeds in Strathmore Park. A number of measures had been introduced in the area to reduce drivers' speed however these had not resulted in slower driving. Mr Andis requested that any future changes to the speed limit should be enforced.

052/11C **ANNOUNCEMENTS BY THE MAYOR**
(1215/11/IM)

NOTED:

The Council was advised that Councillor Lester was to replace Councillor Cook as the Council's representative on the Fairtrade Steering Group.

The Council was advised that the Mayor proposed to add an item to the agenda on the 'Wellywood Sign' in accordance with Standing Order 8. The Mayor explained that the reason that the item was not included on the agenda was that the issue had come to light after the distribution of the agenda. The reason why the proposed item could not be considered at the next meeting of the Council was that the Council was required to express an opinion on the matter prior to the implementation of the sign which was before the next meeting. The Mayor proposed to consider the matter as the first item on the agenda.

Moved Mayor Wade-Brown, seconded Councillor Eagle, the motion that Council considers an additional item on the 'Wellywood' sign.

The motion was put:

Voting for: Mayor Wade-Brown, Councillors Best, Cook, Coughlan, Eagle, Gill, Lester, Pannett, Pepperell and Ritchie.

Voting against: Councillors Ahipene-Mercer, McKinnon, Marsh and Morrison.

Majority Vote: 10:4

The motion was declared CARRIED.

RESOLVED:

THAT Council:

1. *Considers an additional item on the 'Wellywood' sign.*

053/11C **PETITIONS**
(1215/11/IM)

NOTED:

There were no petitions.

054/11C **CONFLICT OF INTEREST DECLARATIONS**
(1215/11/IM)

NOTED:

1. Councillor McKinnon declared a conflict of interest in relation to the item 'Wellywood Sign'.

2. Mayor Wade-Brown and Councillor Coughlan declared a conflict of interest in relation to the item 'Mayoral Visit – China and Japan July 2011'.

GENERAL BUSINESS

(Councillor McKinnon left the meeting at 5.43pm.)

055/11C **WELLYWOOD SIGN**
(1215/11/IM)

(5.43PM – 6.21PM)

Moved Mayor Wade-Brown, seconded Councillor Eagle, the substantive motion that Council agree to request that Wellington International Airport Limited reconsider the decision to erect the Wellywood sign.

(Councillor Foster joined the meeting at 6.19pm.)

The substantive motion was put:

Voting for: Mayor Wade-Brown, Councillors Best, Cook, Eagle, Foster, Gill, Lester, Pannett, Pepperell and Ritchie.

Voting against: Councillors Ahipene-Mercer, Coughlan, Marsh and Morrison.

Majority Vote: 10:4

The substantive motion was declared CARRIED.

RESOLVED:

THAT Council:

1. *Agree to request that Wellington International Airport Limited reconsider the decision to erect the Wellywood sign.*

(Mayor Wade-Brown left the meeting at 6.21pm.)

(Councillor Coughlan left the meeting at 6.21pm.)

(Councillor McKinnon rejoined the meeting at 6.21pm.)

(Councillor McKinnon assumed the Chair.)

056/11C **MAYORAL VISIT – CHINA AND JAPAN JULY 2011 (6.21PM – 6.54PM)**
 Report of Teena Pennington– Director, Strategy, Planning and Urban
 Design
 (1215/11/IM) (REPORT 1)

Moved Councillor McKinnon, seconded Councillor Ahipene-Mercer, the substantive motion.

Moved Councillor Foster, seconded Councillor Lester, the procedural motion that the motion be put.

The procedural motion was put:

Voting for: Councillors Foster, Lester and McKinnon.

Voting against: Councillors Ahipene-Mercer, Best, Cook, Eagle, Gill, Marsh, Morrison, Pannett, Ritchie and Pepperell.

Majority Vote: 3:10

The procedural motion was declared LOST.

The substantive motion was put:

Voting for: Councillors Ahipene-Mercer, Best, Cook, Coughlan, Eagle, Foster, Gill, Lester, McKinnon, Marsh, Morrison and Ritchie.

Voting against: Councillors Pannett and Pepperell.

Majority Vote: 11:2

The substantive motion was declared CARRIED.

RESOLVED:

THAT Council:

1. *Receive the information.*
2. *Note that invitations have been extended to the Mayor from the Mayor of Beijing, from the Mayor of Xiamen and also from China Southern Airlines Group inviting her to visit Guangzhou.*
3. *Note that the 2010 Mayoral business delegation successfully established business relationships for Wellington businesses with China.*

The substantive motion was put:

Voting for: Mayor Wade-Brown, Councillors Ahipene-Mercer, Best, Coughlan, Eagle, Foster, Gill, Lester, McKinnon, Marsh, Morrison and Pannett.

Voting against: Councillors Pepperell and Ritchie.

Majority Vote: 12:2

The substantive motion was declared CARRIED.**RESOLVED:**

THAT Council:

1. *Agrees in principle that Council participate in the New Zealand Local Government Funding Agency Limited as an establishment shareholder.*
2. *Agrees to the Statement of Proposal (attached as Appendix 1 of the minutes) to commence the special consultative procedure on the proposal.*
3. *Agree that the Chief Executive acting together with the Portfolio Leader Finance and Portfolio Leader Community Engagement be authorised to:*
 - (a) *Make any editorial amendments to the Statement of Proposal or to reflect any changes required by the Auditor,*
 - (b) *Approve the Summary of Information and its distribution.*

2. **CLASSIFICATION OF LAND UNDER THE RESERVES ACT 1977** (7.06PM – 7.08PM)
(1215/52/IM) (REPORT 4)

(Councillor McKinnon left the meeting at 7.06pm.)

Moved Councillor Ritchie, seconded Councillor Foster the substantive motion.

The substantive motion was put:

Voting for: Mayor Wade-Brown, Councillors Ahipene-Mercer, Best, Coughlan, Eagle, Foster, Gill, Lester, Marsh, Morrison, Pannett, Pepperell and Ritchie.

Voting against: Nil

Majority Vote: 13:0

The substantive motion was declared CARRIED.

RESOLVED:

THAT Council:

1. *Agrees to the following changes:*

(a) *under Section 14 of the Reserves Act 1977, the Council resolves to declare the parcels of land described in Schedule One classified as reserve land according to each parcel's primary purpose as outlined in the recommended classification in Schedule One of the officers report.*

(b) *under Section 24 of the Reserves Act 1977, the Council resolves that it considers that the parcels of land described in Schedule Two, currently held as reserve, should be reclassified to better reflect each parcel's primary purpose as outlined in the recommended classification in Schedule Two of the officers report.*

(c) *under Section 16 (1) (a) and (b) of the Reserves Act 1977, the Council resolves that it considers that the parcels of land described in Schedule Three, currently held as reserve, should be classified according to each parcel's primary purpose as outlined in the recommended classification in Schedule Three of the officers report.*

058/11C **STRATEGY AND POLICY COMMITTEE** (7.08PM – 7.29PM)
Meeting of Thursday 12 MAY 2011
 (1215/11/IM) (REPORT 4)

1. **PROPOSED SPEED LIMIT REDUCTION:** (7.08PM – 7.29PM)
MIRAMAR PENINSULA AND ORIENTAL BAY
 (1215/52/IM) (REPORT 4)

Moved Councillor Pepperell, seconded Councillor Foster, the substantive motion.

Moved Councillor Gill, seconded Councillor Marsh, the following amendment to the substantive motion:

THAT Council:

1. Makes a resolution under Part 6 of the Wellington City Consolidated Bylaw to set the speed limit as stated in the table below on the following sections of road.

Table 1: Proposed speed limit for suburban shopping centres

Street	Legal description	Speed limit	Distance
Miramar Avenue	From its intersection with Tauhinu Road to a point 35 metres east of its intersection with Hobart Street	30km/h	360 metres
Tauhinu Road	From its intersection with Miramar Avenue to a point 45 metres north of its intersection with Miramar Avenue	30km/h	45 metres
Portsmouth Road	For its entire length	30km/h	Entire length
Park Road	From its intersection with Miramar Avenue to a point 75 metres north of its intersection with Byron Street	30km/h	312 metres
Hobart Street	From its intersection with Miramar Avenue to a point 55 metres south of its intersection with Miramar Avenue	30km/h	55 metres

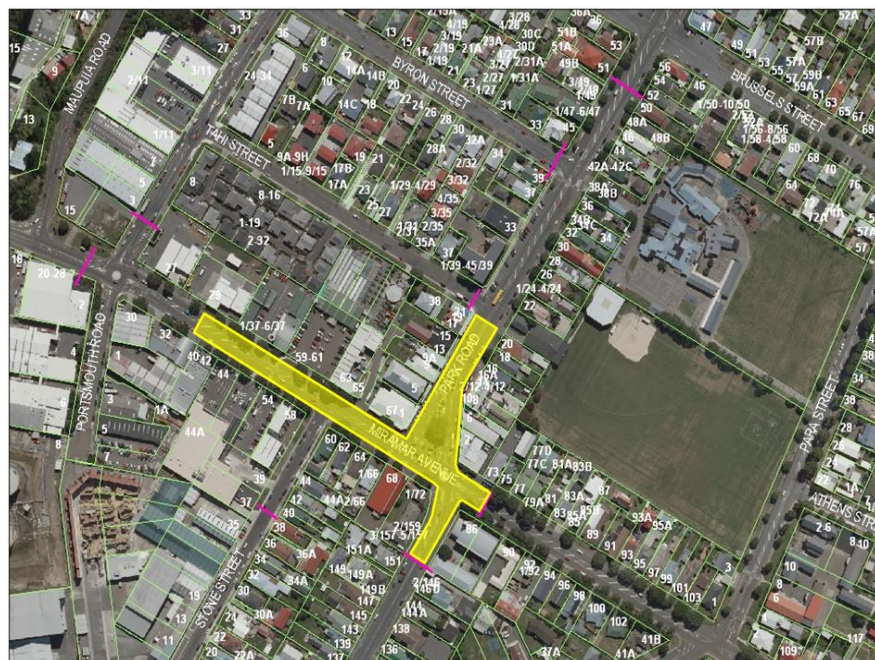
Stone Street	From its intersection with Miramar Avenue to a point 85 metres south of its intersection with Miramar Avenue	30km/h	85 metres
Miramar Avenue	From a point 74m east of its intersection with Tauhinu Road to a point 35 metres east of its intersection with Hobart Street	30km/h	264 metres
Park Road	From its intersection with Miramar Avenue to its intersection with Tahiti Street	30km/h	115 metres
Broadway	From a point 35 metres west of its intersection with Wilberforce Street to a point 65 metres west of its intersection with Strathmore Avenue	30km/h	192 metres
Ira Street	From its intersection with Broadway to a point 45 metres north of its intersection with Broadway	30km/h	45 metres
Strathmore Avenue	From its intersection with Broadway to a point 85 metres south of its intersection with Broadway	30km/h	85 metres

Dundas Street	From its intersection with Ventnor Street to a point 65 metres east of its intersection with Falkirk Avenue	30km/h	175 metres
Falkirk Avenue	From its intersection with Forres Street to a point 45 metres south of its intersection with Dundas Street.	30km/h	160 metres

Table 2: Proposed speed limit for safer walking and cycling

Street	Legal description	Speed limit	Distance
Shelly Bay Road	From a point 60 metres north of its intersection with Miramar Avenue to the point where it joins Massey Road	40km/h	2.8km
Massey Road	For its entire length	40km/h	3.5km
Karaka Bay Road	From where it joins Massey Road to a point 45 metres north of its intersection with Awa Road	40km/h	1.8km
Oriental Parade	From its intersection with Cable Street to a point 60 metres west of its intersection with Carlton Gore Road	40km/h	1.4 km
Herd Street	For its entire length	40km/h	Entire length
Oriental Terrace	For its entire length	40km/h	Entire length

Hay Street	For its entire length	40km/h	Entire length
Baring Street	For its entire length	40km/h	Entire length
Grass Street	For its entire length	40km/h	Entire length
Telford Terrace	For its entire length	40km/h	Entire length
Wilkinson Street	For its entire length	40km/h	Entire length



Miramar Shopping Centre

The amendment was put.

Voting for: Mayor Wade-Brown, Councillors Best, Coughlan, Eagle, Foster, Gill, Lester, Marsh, Morrison and Ritchie.

Voting against: Councillors Ahipene-Mercer, Pannett and Pepprell.

Majority Vote: 10:3

The amendment was declared CARRIED.

(Councillor Ritchie left the meeting at 7.21pm.)

(Councillor Ritchie rejoined the meeting at 7.23pm.)

The substantive motion as amended was put.

Voting for: Mayor Wade-Brown, Councillors Best, Eagle, Foster, Gill, Lester, Pannett, Pepperell and Ritchie.

Voting against: Councillors Ahipene-Mercer, Coughlan, Marsh and Morrison.

Majority Vote: 9:4

The substantive motion as amended was declared CARRIED.**RESOLVED:**

THAT Council:

1. *Resolves under Part 6 of the Wellington City Consolidated Bylaw to set the speed limit as stated in the table below on the following sections of road.*

Table 1: Proposed speed limit for suburban shopping centres

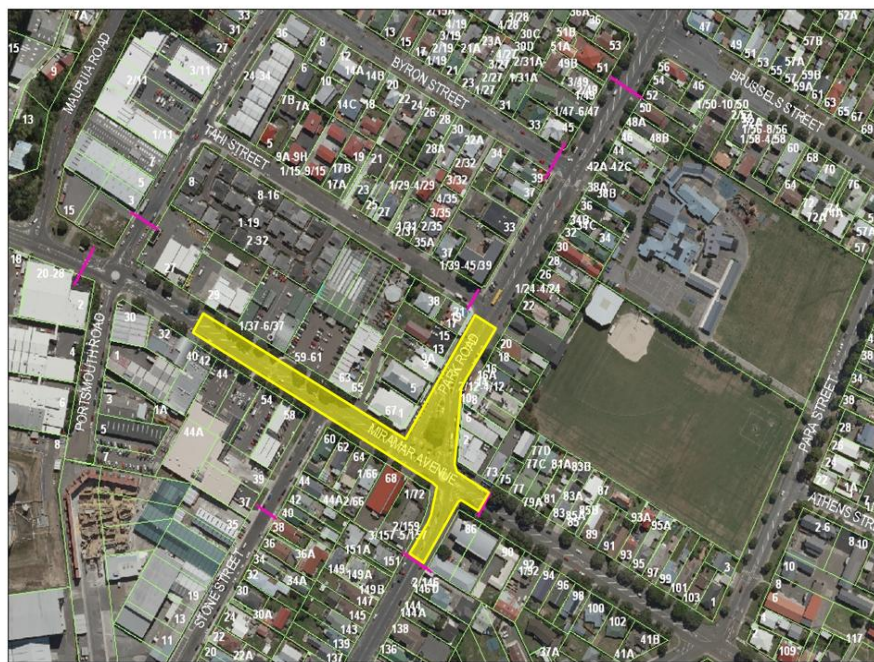
<i>Street</i>	<i>Legal description</i>	<i>Speed limit</i>	<i>Distance</i>
<i>Miramar Avenue</i>	<i>From a point 74m east of its intersection with Tauhinu Road to a point 35 metres east of its intersection with Hobart Street</i>	<i>30km/h</i>	<i>264 metres</i>
<i>Park Road</i>	<i>From its intersection with Miramar Avenue to its intersection with Tahi Street</i>	<i>30km/h</i>	<i>115 metres</i>
<i>Hobart Street</i>	<i>From its intersection with Miramar Avenue to a point 55 metres south of its intersection with Miramar Avenue</i>	<i>30km/h</i>	<i>55 metres</i>
<i>Broadway</i>	<i>From a point 35 metres west of its intersection with Wilberforce Street to a point 65 metres west of its intersection with Strathmore Avenue</i>	<i>30km/h</i>	<i>192 metres</i>

<i>Ira Street</i>	<i>From its intersection with Broadway to a point 45 metres north of its intersection with Broadway</i>	<i>30km/h</i>	<i>45 metres</i>
<i>Strathmore Avenue</i>	<i>From its intersection with Broadway to a point 85 metres south of its intersection with Broadway</i>	<i>30km/h</i>	<i>85 metres</i>
<i>Dundas Street</i>	<i>From its intersection with Ventnor Street to a point 65 metres east of its intersection with Falkirk Avenue</i>	<i>30km/h</i>	<i>175 metres</i>
<i>Falkirk Avenue</i>	<i>From its intersection with Forres Street to a point 45 metres south of its intersection with Dundas Street</i>	<i>30km/h</i>	<i>160 metres</i>

Table 2: Proposed speed limit for safer walking and cycling

<i>Street</i>	<i>Legal description</i>	<i>Speed limit</i>	<i>Distance</i>
<i>Shelly Bay Road</i>	<i>From a point 60 metres north of it intersection with Miramar Avenue to the point where it joins Massey Road</i>	<i>40km/h</i>	<i>2.8km</i>
<i>Massey Road</i>	<i>For its entire length</i>	<i>40km/h</i>	<i>3.5km</i>
<i>Karaka Bay Road</i>	<i>From where it joins Massey Road to a point 45 metres north of its intersection with Awa Road</i>	<i>40km/h</i>	<i>1.8km</i>
<i>Oriental Parade</i>	<i>From its intersection with Cable Street to a point 60 metres west of its intersection with Carlton Gore Road</i>	<i>40km/h</i>	<i>1.4km</i>
<i>Herd Street</i>	<i>For its entire length</i>	<i>40km/h</i>	<i>Entire length</i>
<i>Oriental Terrace</i>	<i>For its entire length</i>	<i>40km/h</i>	<i>Entire length</i>

<i>Hay Street</i>	<i>For its entire length</i>	<i>40km/h</i>	<i>Entire length</i>
<i>Baring Street</i>	<i>For its entire length</i>	<i>40km/h</i>	<i>Entire length</i>
<i>Grass Street</i>	<i>For its entire length</i>	<i>40km/h</i>	<i>Entire length</i>
<i>Telford Terrace</i>	<i>For its entire length</i>	<i>40km/h</i>	<i>Entire length</i>
<i>Wilkinson Street</i>	<i>For its entire length</i>	<i>40km/h</i>	<i>Entire length</i>



Miramar Shopping Centre

NOTED:

The amendments to the motion are shown in bold.

059/11C **QUESTIONS**
(1215/11/IM)

NOTED:

There were no questions.

The meeting concluded at 7.29pm.

Confirmed: _____
Chair
/ /

Have your say on Council plans to be part of a new funding agency

Summary of information

Proposal to amend the Investment and Liability Management policies contained in the Wellington City Council's Long Term Council Community Plan 2009–19 and to invest in the Local Government Funding Agency.

Wellington City Council is proposing to join with the Government and other local authorities to establish a new funding body – the New Zealand Local Government Funding Agency Limited (LGFA). This is your opportunity to have a say.

The LGFA is being set up so local authorities can borrow money more cheaply. Legislation setting out how the agency will work is currently before Parliament.

~~The benefits for Wellington City Council in participating in the LGFA are expected lower borrowing costs estimated between \$37,000 and \$75,000 in 2013 rising to between \$369,000 and \$739,000 in 2019.~~ By participating in the LGFA, the Council expects to benefit from lower borrowing costs – resulting in estimated annual savings rising to between \$370,000 and \$740,000 by 2019. The Council also expects to benefit from having access to another source of debt funding.

The Council is proposing to join the LGFA as an establishment shareholder, along with the Government and eight other local authorities. To do so, we will be required to make an initial capital contribution. This is expected to be between \$1.4 and \$2.3 million.

The Council will be required to guarantee its obligations and the obligations of other councils under the LGFA. ~~A call on this guarantee will only occur if the numerous safeguards put in place to prevent an LGFA default fail.~~ A guarantee will only be called if the numerous safeguards put in place to prevent a default fail. This is highly unlikely to happen.

To participate in the LGFA the Council is required to amend the Investment and Liability Management policies set out in its Long Term Council Community Plan 2009–19.

The Council has agreed in principle to participate in the LGFA. We want to hear your views before we make a final decision.

Where to go for more information

A full statement of proposal, ~~(which sets out among other things, an analysis of the costs and benefits of participating in the LGFA)~~ including an analysis of the costs and benefits of participating in the LGFA, is available from:

- the Council Service Centre, 101 Wakefield Street
- Wellington City libraries
- Wellington.govt.nz (select the Have Your Say link, and go to Public Input).

You can also phone us on 499 4444 or email lgfa@wcc.govt.nz for more information.

How to make a submission

You can make a written submission online at Wellington.govt.nz. Alternatively, Freepost submission forms are available from our website, the Council Service Centre, Wellington City libraries, or by calling the Council on 499 4444.

Submissions can be posted, emailed, faxed or delivered to the addresses listed on the submission form.

Please let us know if you would like to make an oral submission by ticking the box on your submission form.

The closing date for submissions is 5pm, 22 July 2011.