

The WCC LAP

Dr. Paul Quigley
MBCChB FACEM

Department of Emergency Medicine
Wellington Hospital

Myself

- **NOT a Wowser.**
- **Enjoy a good beer, will certainly be at Beervana along with most of colleagues**
- **Do not have alcohol at home and always have a minimum of 4 days per alcohol free**
- **Zero tolerance with drinking and driving**

It cannot be said enough times.

- **REDUCE ALCOHOL HARM BY...**

- **Increasing the price**

- DENIED BY CENTRAL GOVERNMENT

- **Increasing the purchase age**

- DENIED BY CENTRAL GOVERNMENT

- **Reducing the blood alcohol driving limit**

- DENIED BY CENTRAL GOVERNMENT

- **Reducing advertising and marketing**

- TO BE EXPLORED IN THE FUTURE

- **Yet the PUBLIC actually wants CHANGE..**

- **Reducing availability**

- AVAILABLE TO LOCAL AUTHORITIES

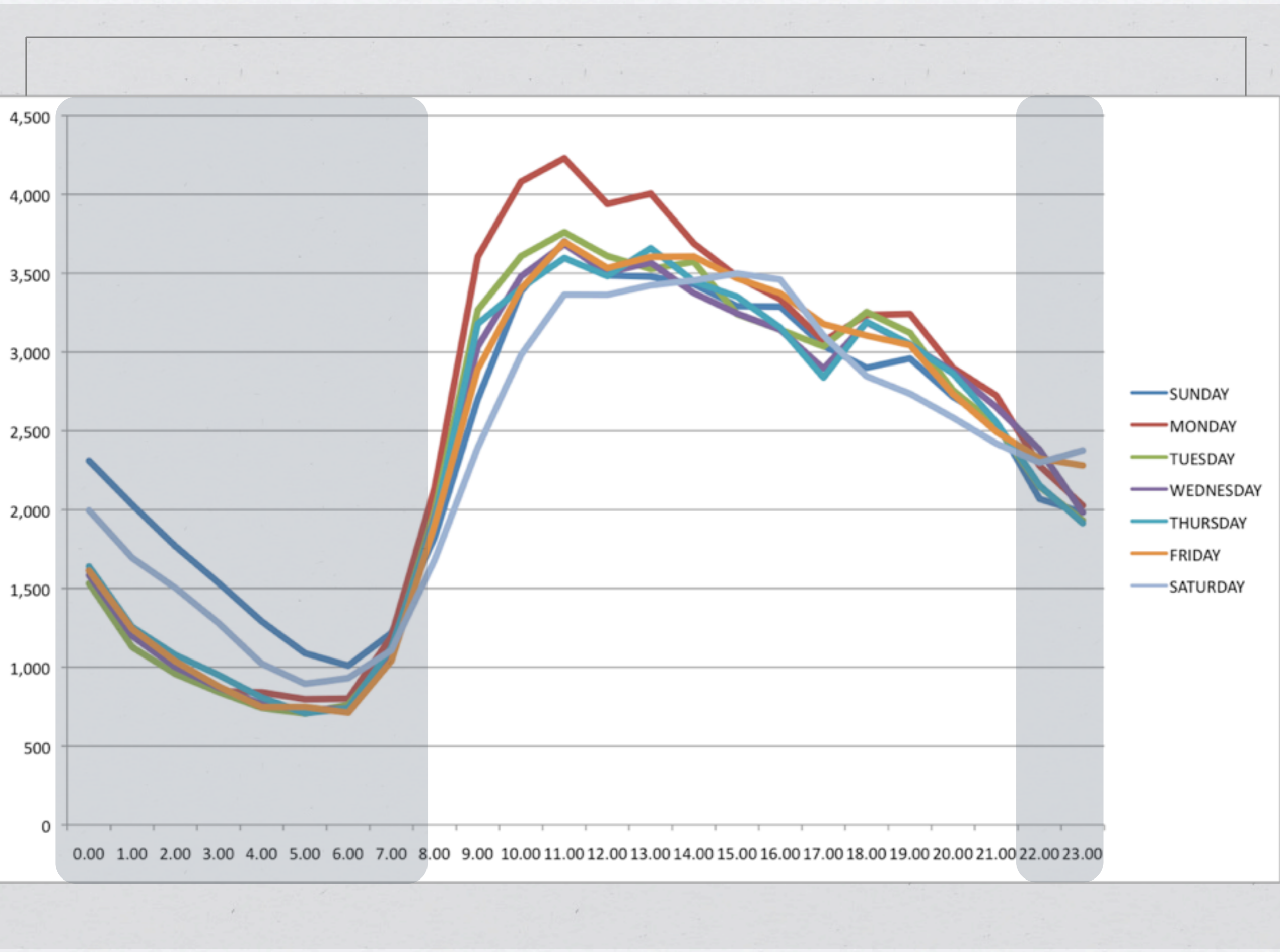
ED Health Points

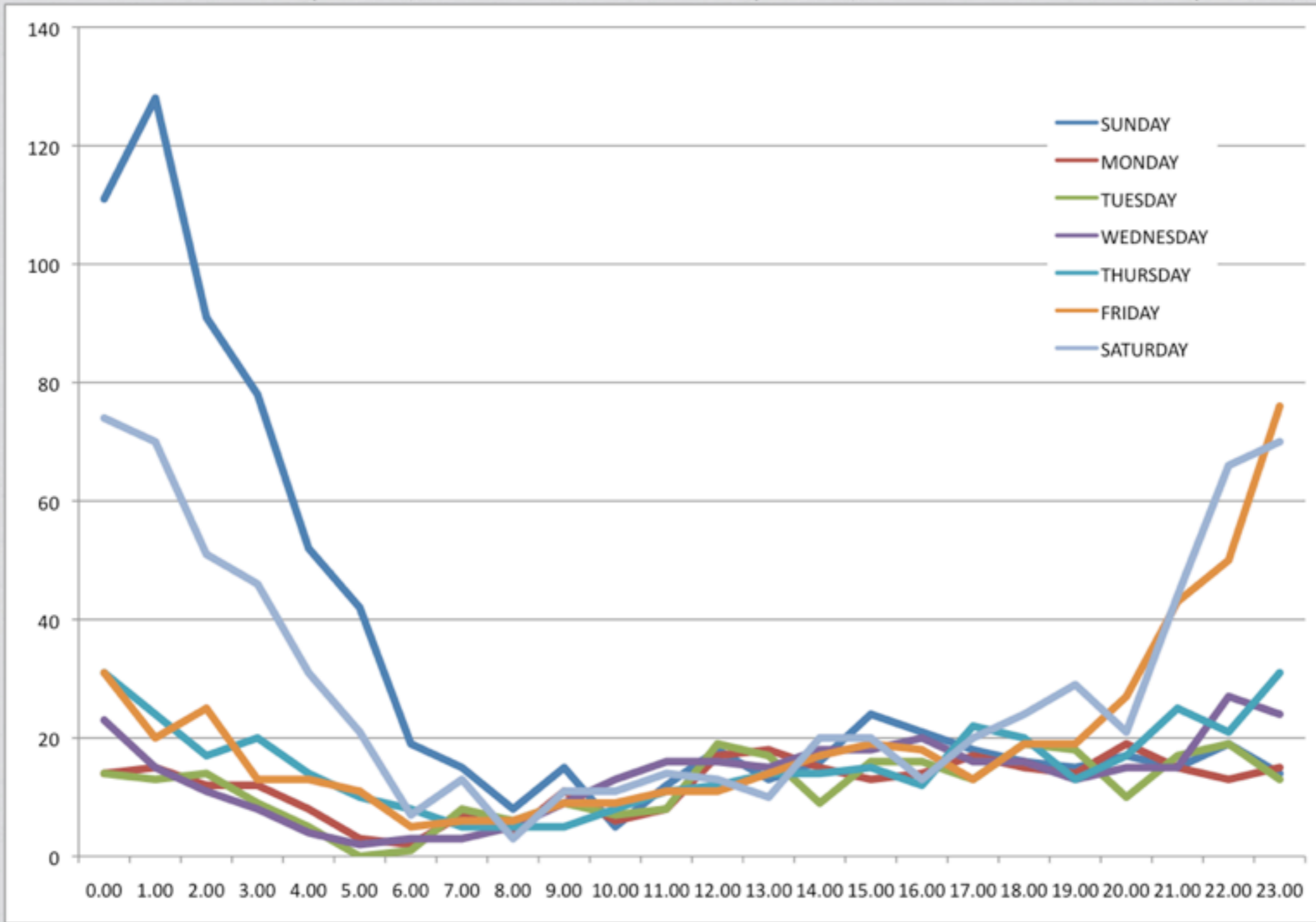
- **Alcohol harm is a PREVENTABLE form of illness and injury.**
- **We see harm to ALL levels of New Zealand society**
- **Youth are a public target of harms of alcohol but...**
- **Adults conduct there abuse and harms in private.. we see the consequences.**
- **Hypocrisy reigns in NZ society over the acceptance & ignorance of alcohol related harms.**

AGE	SEX	DIAG	DATE	DATE	LOS	NOTES
37	M	UNSPECIFIED KNEE SPRAIN / STRAIN	10 April, 2010	22:12:00	06:23:00	
37	M	ANTIDEPRESSANTS POISONING	10 April, 2010	22:19:00	07:28:00	4 Bottles of wine then OD
53	M	VASOVAGAL ATTACK	10 April, 2010	22:29:00	02:44:00	Bottle of wine and cannabis
28	M	TOE WOUND	10 April, 2010	22:35:00	05:01:00	Stood on broken glass
28	M	DID NOT WAIT	10 April, 2010	23:11:00	03:42:00	
62	F	CHEST PAIN	10 April, 2010	23:25:00	02:12:00	
90	M	PERFORATED VISCUS, ATRAUMATIC NOT PEPTIC	10 April, 2010	23:29:00	07:35:00	
70	F	ATRIAL FIBRILLATION	10 April, 2010	23:40:00	04:29:00	
39	F	PARACETAMOL OD	11 April, 2010	0:00:00	11:47:00	2 Bottles of Wine
40	F	DID NOT WAIT	11 April, 2010	0:06:00	02:35:00	
50	F	VOMITING, NOT BLOOD	11 April, 2010	0:20:00	06:44:00	
20	F	OTHER POISONING	11 April, 2010	0:32:00	09:37:00	Alcohol and Drugs
15	F	ALCOHOL INTOXICATION	11 April, 2010	0:34:00	08:11:00	
25	F	DID NOT WAIT	11 April, 2010	0:38:00	03:52:00	
7	F	ASTHMA, ACUTE	11 April, 2010	0:52:00	04:08:00	
22	F	LACERATION EYEBROW	11 April, 2010	0:55:00	03:35:00	Assaulted, Drunk
89	F	CELLULITIS, LEG EXCEPT FOOT	11 April, 2010	1:05:00	12:23:00	
68	M	CHEST PAIN	11 April, 2010	1:23:00	03:51:00	
17	F	DID NOT WAIT	11 April, 2010	1:24:00	02:51:00	
15	F	FEVER	11 April, 2010	1:41:00	04:16:00	
19	M	ETHYL ALCOHOL POISONING	11 April, 2010	1:46:00	06:10:00	
51	F	VOMITING FOOD POISONING	11 April, 2010	1:48:00	02:14:00	
19	F	FOOT TRAUMA	11 April, 2010	1:51:00	02:09:00	Stood on in night club, drunk
41	M	ATRIAL FIBRILLATION	11 April, 2010	2:13:00	10:11:00	
2	M	ASTHMA, ACUTE	11 April, 2010	2:54:00	02:17:00	
35	M	Fracture of mandible, multiple sites	11 April, 2010	2:56:00	07:53:00	Assaulted, Drunk
25	F	INTOXICATED	11 April, 2010	3:20:00	01:18:00	
23	M	SCALP ABRASION NOT INFECTED	11 April, 2010	3:39:00	04:38:00	Passenger in MVA, Drunk
19	F	ABDOMINAL PAIN BRUISING	11 April, 2010	3:46:00	04:52:00	Passenger in MVA, Drunk
0	M	CLOSED CLAVICAL FRACTURE	11 April, 2010	4:19:00	02:01:00	
4	F	LARYNGITIS	11 April, 2010	4:26:00	03:35:00	
18	F	DID NOT WAIT	11 April, 2010	5:18:00	00:49:00	
50	F	PULMONARY EMBOLISM	11 April, 2010	5:24:00	06:01:00	
22	M	OPEN WOUND (EXCL. EYE [13]) - FACE (EXCLUDES EYE [22])	11 April, 2010	5:57:00	04:07:00	Assaulted, Drunk
19	M	DID NOT WAIT	11 April, 2010	6:01:00	01:19:00	Assaulted, Drunk
46	M	OTHER URINARY CATHETER DEVICE COMPLICATIONS	11 April, 2010	7:19:00	03:40:00	
34	M	SPRAIN/STRAIN LATERAL COLLATERAL LIGAMENT	11 April, 2010	7:23:00	03:35:00	
42	F	Acute pancreatitis, unspecified	11 April, 2010	7:55:00	06:45:00	Alcohol induced pancreatitis

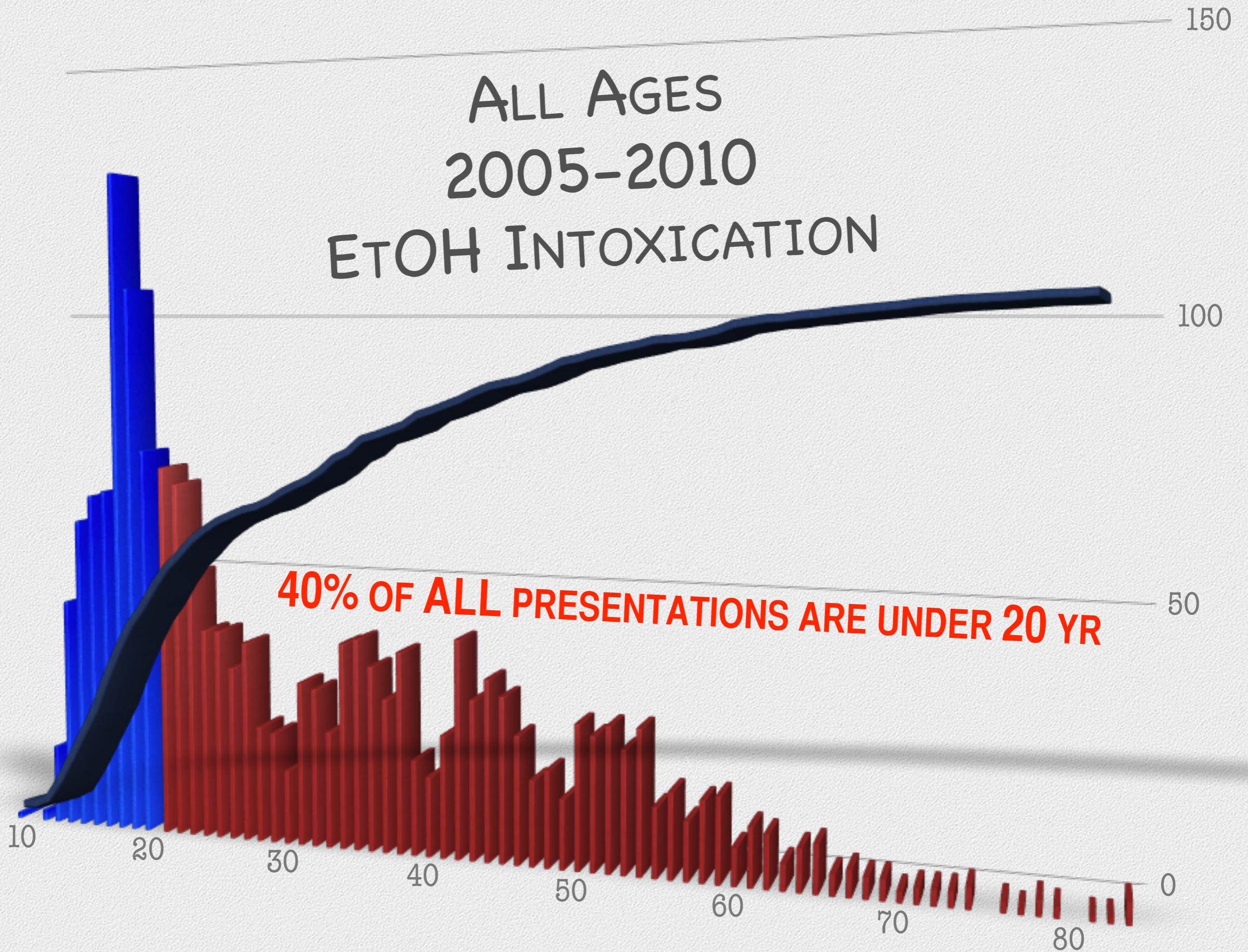
Hospital Presentations

- **We tend to see three patterns of acute alcohol harm**
 - **Acute Intoxication “Just plain pissed”**
 - 1000 - 0200
 - **Acute violence and injury; facial, head and hands**
 - Later presentations similar to Police data 0200 - 0600
 - **The Day After**
 - Saturday, Sunday and even Monday mornings
 - Ankle, knee, facial injuries
- **Chronic presentations**
 - **No particular pattern in day or time**
 - **They are able to access alcohol easily**





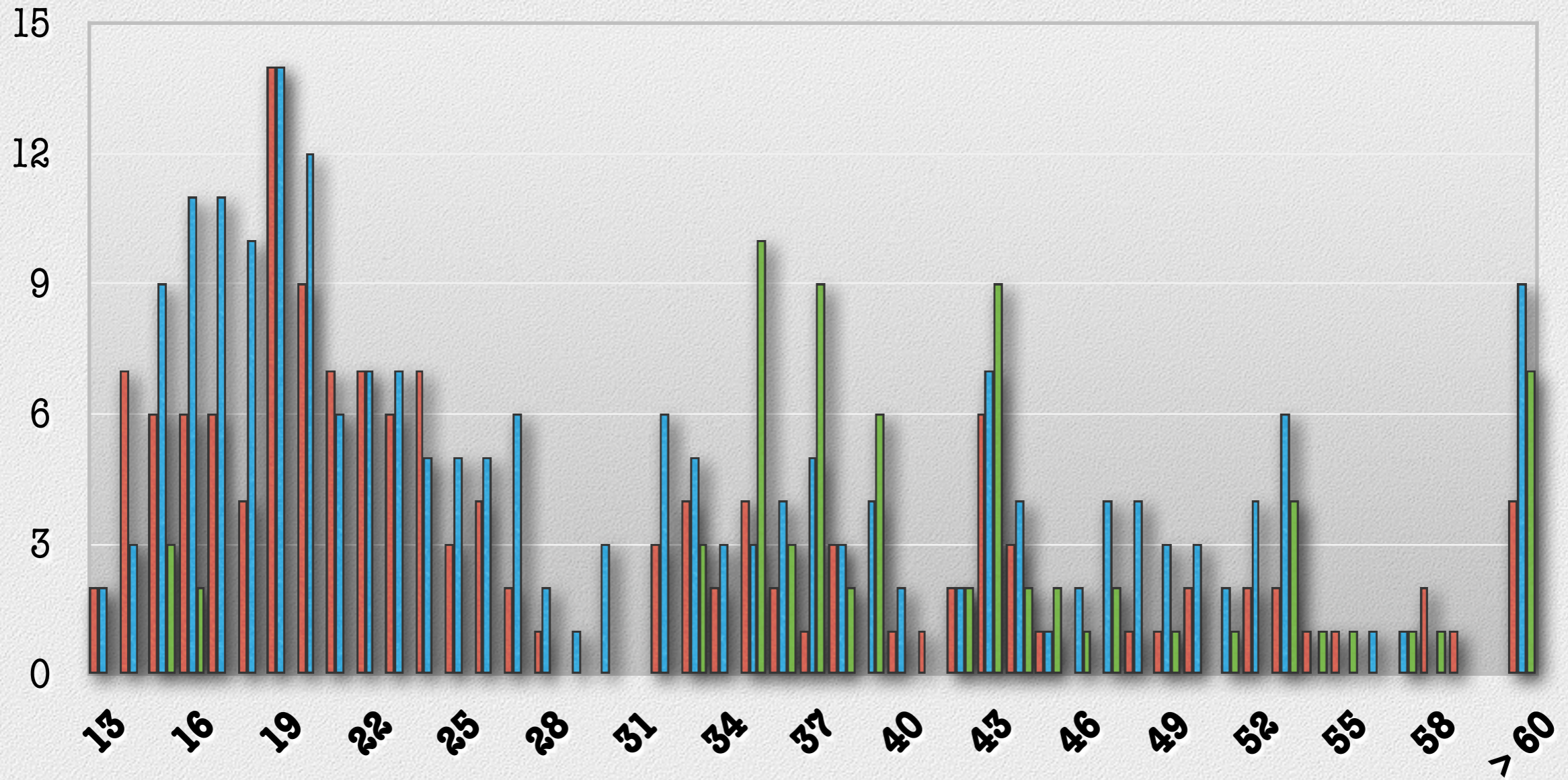
ALL AGES 2005-2010 ETOH INTOXICATION



2006 Intoxicated presentations

All Ages

FEMALE **MALE** **MULTI**



Myths

- **All the harm comes from Courtney Place.**
 - **WRONG, the majority of Ambulance delivered cases come from the community.**
 - **The Community get alcohol from Off-licences**
- **Youth are the problem**
 - **NO, while 40% of presentations are under the age of 20y**
 - **That means 60% are all the other ages.**
 - **With peaks occurring in the 30's and 40's**

Beware of Numbers. A Rebuttal

- **ACC Costs and Injury**
- Alcohol was involved in **15%** of all injuries treated at Wellington Hospital ED from 15 Jan – 31st March 2010, that resulted in an identifiable claim to ACC.
 - Note how similar this is Progressive Foods figure of TOTAL alcohol sales.
 - We have a-lot of non-alcohol injuries at non critical times too.
- This figure was **56%** of all injuries treated between midnight and 6am.
- And **71%** of all injuries treated between 10pm and 6am on Saturday night/Sunday mornings.
 - Have they provided the figures for these critical times as a % of sales...

The Wellington ED

- **SUPPORTS**

- **REDUCTION in SUPPLY**

- Reducing the hours of OFF-LICENCE vendors is a positive method of reducing supply to the community

- **THERE IS NO DIFFERENCE IN OFF-LICENCE SUPPLIERS**

- Supermarkets and Grocery are OFF-LICENCES
 - In survey of ED staff, they would NOT be inconvenienced by an early reduction in sales of alcohol from supermarkets. They believe the benefits in reducing alcohol supply outweigh any personal inconvenience.

- **SAFE SUPPLY**

- We support the idea of “best practice providers” and can see value in having an organised entertainment zone to provide additional security and health care.
- The benefits of this have been seen in the efforts put into the 7’s

- **REDUCTION in SUPPLY [ON-LICENCE]**
 - **We support the Police based upon the patient mix we see in the Emergency Department.**
 - **Increased violence and injury related harms present in the early hours of the morning**
 - **We can see no harm reduction occurring by allowing extensions to 0500**
- **WE RECOMMEND CLOSURE AT 0300**

Thank You