

Reference: TR100 – 17

Location: Salamanca Road - Kelburn
(Kelburn Park)

Proposal: Convert P120 park to a mobility park, P120 Monday to Friday 8am-6pm

Information: The Kelburn Park Pavilion Renewal project is nearing completion. In support of a Building Consent application, it was required to review the access and facilities for persons with disabilities to and within the building.

Currently, Kelburn Park has a total of 13 off street parks provided on site with no accessible car parks.

As part of the proposed works, at least one mobility car park must be provided to comply with the requirements for this Building Consent.

It is proposed to convert one of the existing P120 time limited parks into a P120 mobility park during weekdays only.

Net parking loss: 0 – conversion from P120 to a P120 mobility park.

Key Dates:

- 1) Advertisement in the Dominion Post Newspaper 25 July 2017
- 2) Feedback period closes. 11 August 2017
- 3) If no objections received report sent to City Strategy Committee for approval. 14 September 2017
- 4) If objections are received, further consultation, amendment/s, or proceed with explanation as appropriate.

Legal Description:

Remove from Schedule A (Time Limited Parking) of the Traffic Restrictions Schedule

Column One

***Salamanca Road
(Kelburn Park)***

Column Two

*P120, Monday to
Friday, 8:00am –
6:00pm*

Column Three

Kelburn Park, commencing 128 metres north of its intersection with Kelburn Parade, (Grid Coordinates X= 748147.4m, Y= 5427901.2m) and extending in a northerly direction for 50 metres (14 angled parking spaces).

Add to Schedule A (Time Limited Parking) of the Traffic Restrictions Schedule

Column One

***Salamanca Road
(Kelburn Park
carpark)***

Column Two

*P120, Monday to
Friday, 8:00am –
6:00pm*

Column Three

Kelburn Park carpark, commencing at a point 13 metres from the northern intersection point with Salamanca Road at the park driveway entrance, (Grid Coordinates X= 1,748,161.1881 m, Y= 5,428,032.6451 m) and extending in a northerly direction for 45 metres (13 angled parking spaces).

Add to Schedule B (Class Restricted Parking) of the Traffic Restrictions Schedule

Column One

***Salamanca Road
(Kelburn Park
carpark)***

Column Two

No stopping except for vehicles displaying an operation mobility card, P120, Monday to Friday, 8:00am-6:00pm

Column Three

Kelburn Park carpark, commencing at a point 13 metres from the northern intersection point with Salamanca Road at the park driveway entrance, (Grid Coordinates X= 1,748,161.1881 m, Y= 5,428,032.6451 m) and extending in a northerly direction for 3 metres (1 mobility angled parking space).

PROPOSED TRAFFIC RESOLUTION

Absolutely Positively
Wellington City Council

Me Heke Ki Pōneke

Prepared By: Orencio Gueco

(Area Traffic Engineer)

Approved By: Steve Spence

(Chief Transport Advisor)

Date: 14 July 2017

WCC Contact:

Orencio Gueco

Area Traffic Engineer

Networks - Transport and Waste
Operations

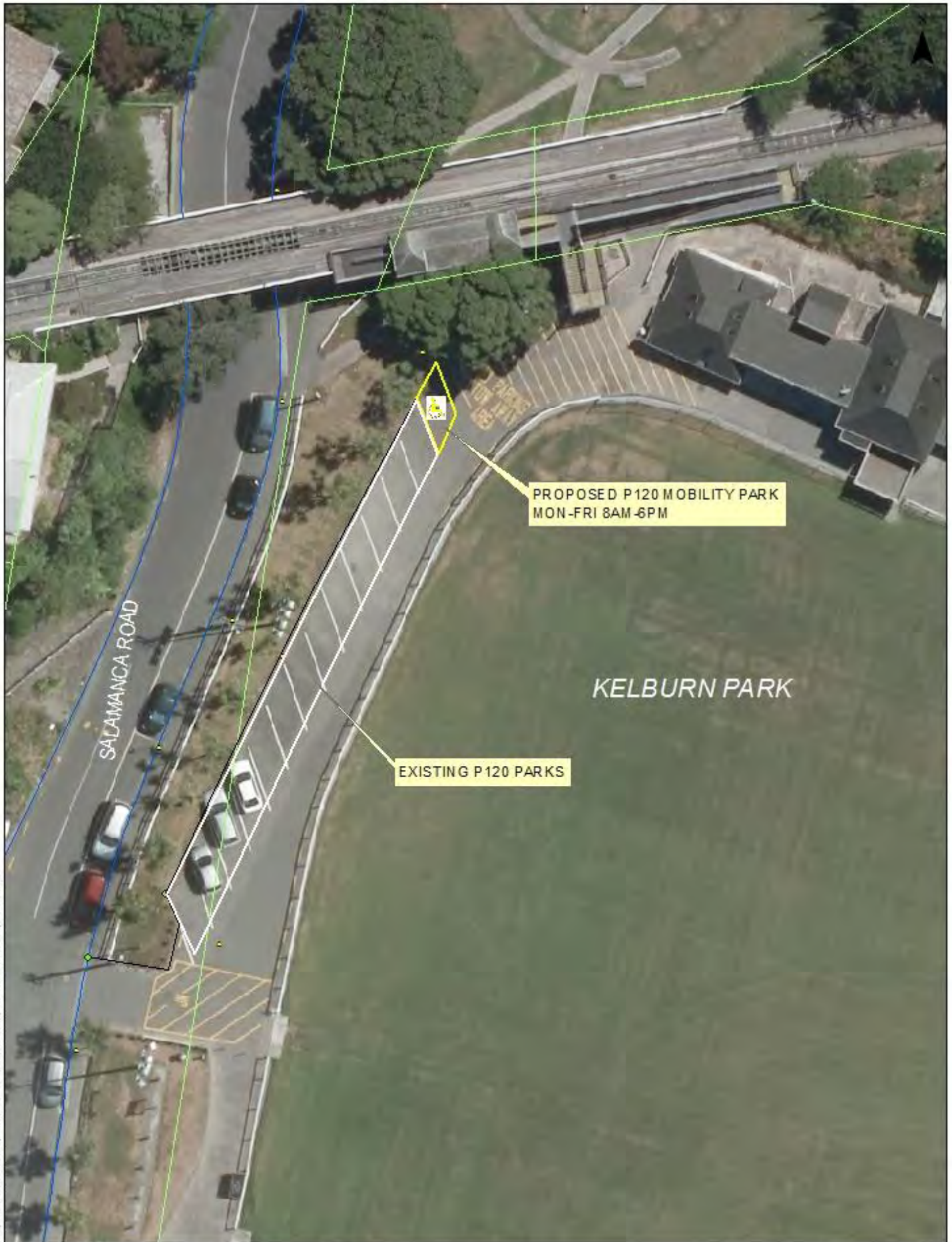
Wellington City Council

101 Wakefield Street / PO Box 2199,
Wellington

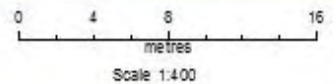
Phone: +64 4 803 8287

Fax: +64 4 801 3009

Email: orencio.queco@wcc.govt.nz



Kelburn Park, Salamanca Road TR100-17
 Proposed P120 mobility park



Property boundaries, 20m. Contours, road names, rail line, address & site points sourced from Land Information NZ. Crown Copyright reserved. Property boundaries accuracy: 4-1m in urban areas, 4-20m in rural areas. Census data sourced from Statistics NZ. Postcodes sourced from NZPost. Assets, contours, water and drainage information shown is approximate and must not be used for detailed engineering design. Other data has been compiled from a variety of sources and its accuracy may vary, but is generally 4-1m.

MAP PRODUCED BY:
 Wellington City Council
 101 Wakefield Street
 WELLINGTON, NZ

ORIGINAL MAP SIZE: A4
 AUTHOR: gue0020
 DATE: 28/06/2017
 REFERENCE:

Absolutely Positively
Wellington City Council
 No Place Like Home

Report: J:\HOME\IC\SCAL\TR100-17\Kelburn Park Mobility Park TR100-17\Map\TR100-17.mxd