

# We are proposing a change in your area

Kia ora,

This leaflet is to let you know about a change we are proposing to make in your neighbourhood.

## Proposal:

<b>Reference</b>	<ul style="list-style-type: none"> <li>• TR05-21 Holloway Road - No Stopping At All Times</li> </ul>
<b>What we'd like to do</b>	<ul style="list-style-type: none"> <li>• Install 10 metres of broken yellow lines along the northern side opposite no.15-19 Holloway Road.</li> <li>• Install 22 metres of broken yellow lines along the southern side outside no.31-33 Holloway Road.</li> <li>• Install 50 metres of broken yellow lines along the northern side outside no.56-60 Holloway Road.</li> <li>• Install 42 metres of broken yellow lines along the northern side opposite no.71-77 Holloway Road.</li> <li>• Install 18 metres of broken yellow lines along the northern side outside no.80-90 Holloway Road.</li> <li>• Install 53 metres of broken yellow lines along the southern side opposite no.94-106 Holloway Road.</li> <li>• Install 15 metres of broken yellow lines along the southern side outside no.113 Holloway Road.</li> <li>• Install 33 metres of broken yellow lines along the northern side outside no.116-118 Holloway Road.</li> </ul>
<b>Why we are proposing the change</b>	<ul style="list-style-type: none"> <li>• We have received safety and accessibility concerns from residents about vehicles (particularly emergency services vehicles) traveling through Holloway Road.</li> <li>• High parking demand and unorganised parking arrangement on this street has created accessibility issues at a time of an emergency (see page 3 for additional information)</li> <li>• The proposed restrictions align with Council's newly adopted Parking Policy (adopted August 2020), <i>4.1 Parking Policy Objectives Support safe movement – facilitate the safe and efficient movement of people and goods by focusing on people moving along transport corridors rather than people parking or storing stationary vehicles.</i></li> <li>• The road width varies along Holloway Road measuring approximately between 4.3 metres to 9 meters. The current parking arrangement allows vehicles to park on both sides or staggered along the road. This can commonly leave insufficient width for larger service/emergency vehicles to manoeuvre through and access to all properties.</li> <li>• Officers propose installing broken yellow lines as per the attached plans to ensure accessibility and safety through these residential areas.</li> </ul>

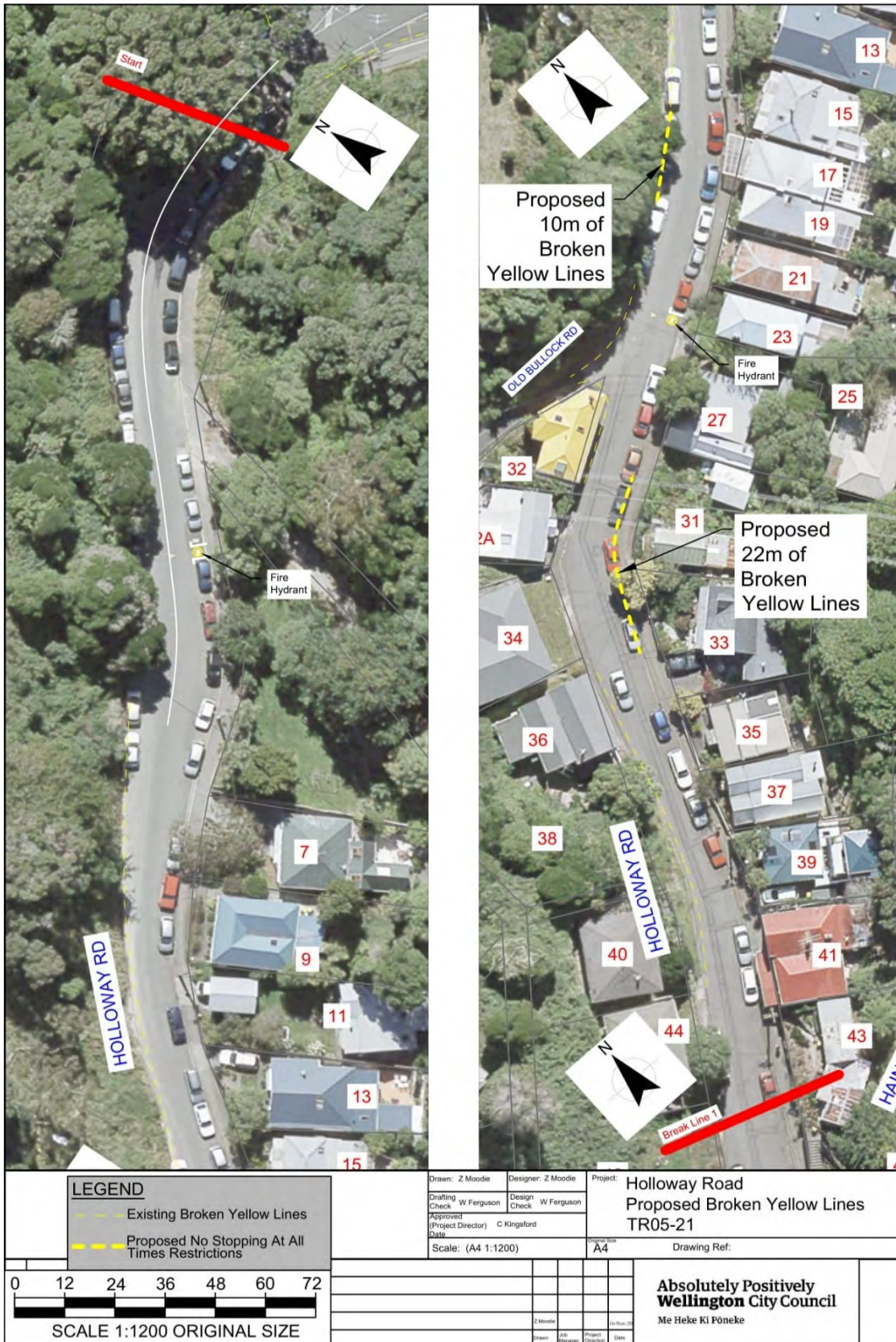
	<p>Extra background</p> <ul style="list-style-type: none"> <li>• Impeding the safe passage of emergency and large utility vehicles caused by cars parked on both sides of the road is a major health and safety issue,</li> <li>• Residents reported that on two occasions, in recent years, fire engines have been unable to get up the street to attend events of fires, a house recently burnt down in one of these incidents, cars had to be towed out of the way before the fire engine could pass. On another occasion an ambulance was delayed attending to a medical emergency at the end of the street, having to navigate a tight passage between parked cars.</li> <li>• On several occasions, refuse trucks have failed to pick up rubbish due to the accessibility problems up the street.</li> <li>• We have discussed with Council structure engineers on the options to cut back the bank and provide recessed parking bays. There was little benefit as the extra width is not sufficient for additional parking.</li> <li>• We have met on site with emergency services on the 12<sup>th</sup> November 2020 to address key locations on the street.</li> </ul>  <ul style="list-style-type: none"> <li>• We understand the challenges residents are facing and would like to work with them to come up with a new resident's parking scheme. We will be in touch to discuss the potential future residents parking scheme as part of the parking policy.</li> </ul>
<p><b>Location – where we propose to make the change</b></p>	<ul style="list-style-type: none"> <li>• Holloway Road, Aro Valley</li> </ul>
<p><b>Impact</b></p>	<ul style="list-style-type: none"> <li>• Improves safety and accessibility for vehicles travelling on Holloway Road.</li> <li>• Pedestrian impact – This will result in an improvement for pedestrians as there will be improved visibility between driver and pedestrians to make it safer and easier for pedestrians to cross the road.</li> </ul>

# We are proposing a change in your area

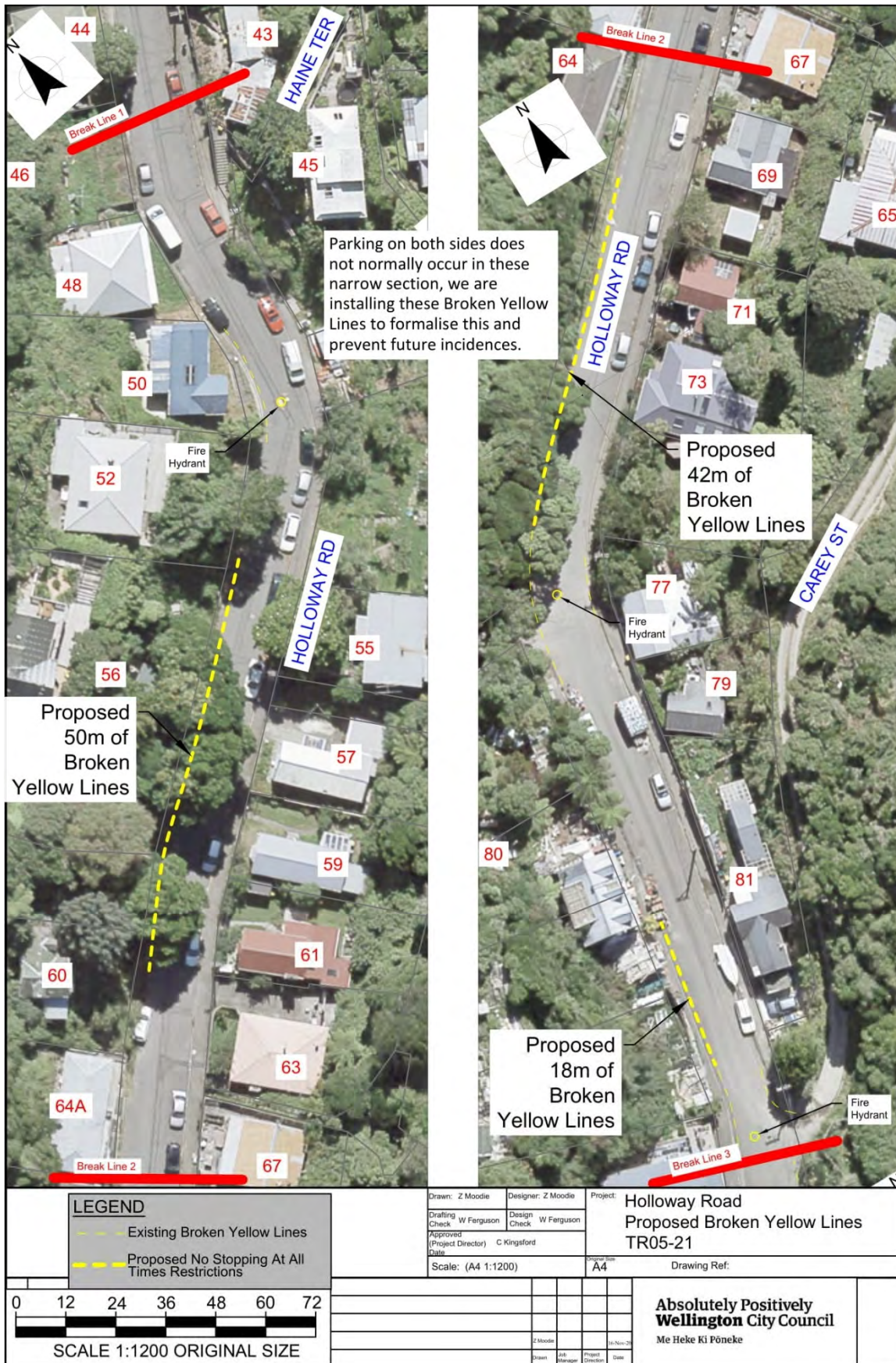
	<ul style="list-style-type: none"> <li>• Net parking impact – a parking survey was carried out to determine the location of public parking along Holloway Road. The survey showed only 2 vehicles would be impacted by the proposed broken yellow lines as public generally know not to park in areas that would restrict/block access for large service/emergency vehicles, this proposal is to formalise this transport corridor as an access route for local residents .</li> </ul>
<p><b>Additional Information</b></p>	<ul style="list-style-type: none"> <li>• Average daily traffic count – 534.</li> <li>• A review of the NZ Transport Agency Crash Analysis System has revealed 6 reported crashes on Holloway Road between 2015 and 2020. Five of the reported crashes involved parked cars.</li> <li>• We have carried out two vehicle parking surveys (one during the day and another in the evening) to better understand parking behaviour and arrangement along the street.</li> <li>• A morning survey showed 119 vehicles parked on Holloway Road, 38 registered to local residents.</li> <li>• Holloway Road leads to the Waimapihi Reserve. Mountain bikers using the surrounding tracks were noted to park their vehicles in this location in the evenings.</li> <li>• The survey showed 71% occupancy of unrestricted parking spaces during the morning and 82% during the evening.</li> <li>• To view the legal description for this Traffic Resolution, an electronic copy of the report will be available on the Council’s website from 9.00am Tuesday 24 November 2020 at <a href="http://www.wellington.govt.nz/haveyoursay">www.wellington.govt.nz/haveyoursay</a> or you can call (04) 499 4444 and we will send one out to you.</li> </ul>
<p><b>Feedback</b></p>	<p>If you would like to provide us with specific feedback, you can do so by filling out an online submission form, downloading a printable submission form on <a href="http://www.wellington.govt.nz/haveyoursay">www.wellington.govt.nz/haveyoursay</a> or emailing us at <a href="mailto:trfeedback@wcc.govt.nz">trfeedback@wcc.govt.nz</a> .</p> <p><b>Please note if you are giving feedback the consultation period opens 9.00am Tuesday 24 November and finishes 5.00pm Tuesday 8 December 2020.</b></p>
<p><b>Next Steps</b></p>	<ol style="list-style-type: none"> <li>1. Feedback collated by Wednesday 9 December 2020.</li> <li>2. The proposal will go to the Regulatory Processes Committee on Wednesday 3 February 2021.</li> <li>3. If approved, the proposal will be installed within the following 3 months</li> </ol>

# We are proposing a change in your area

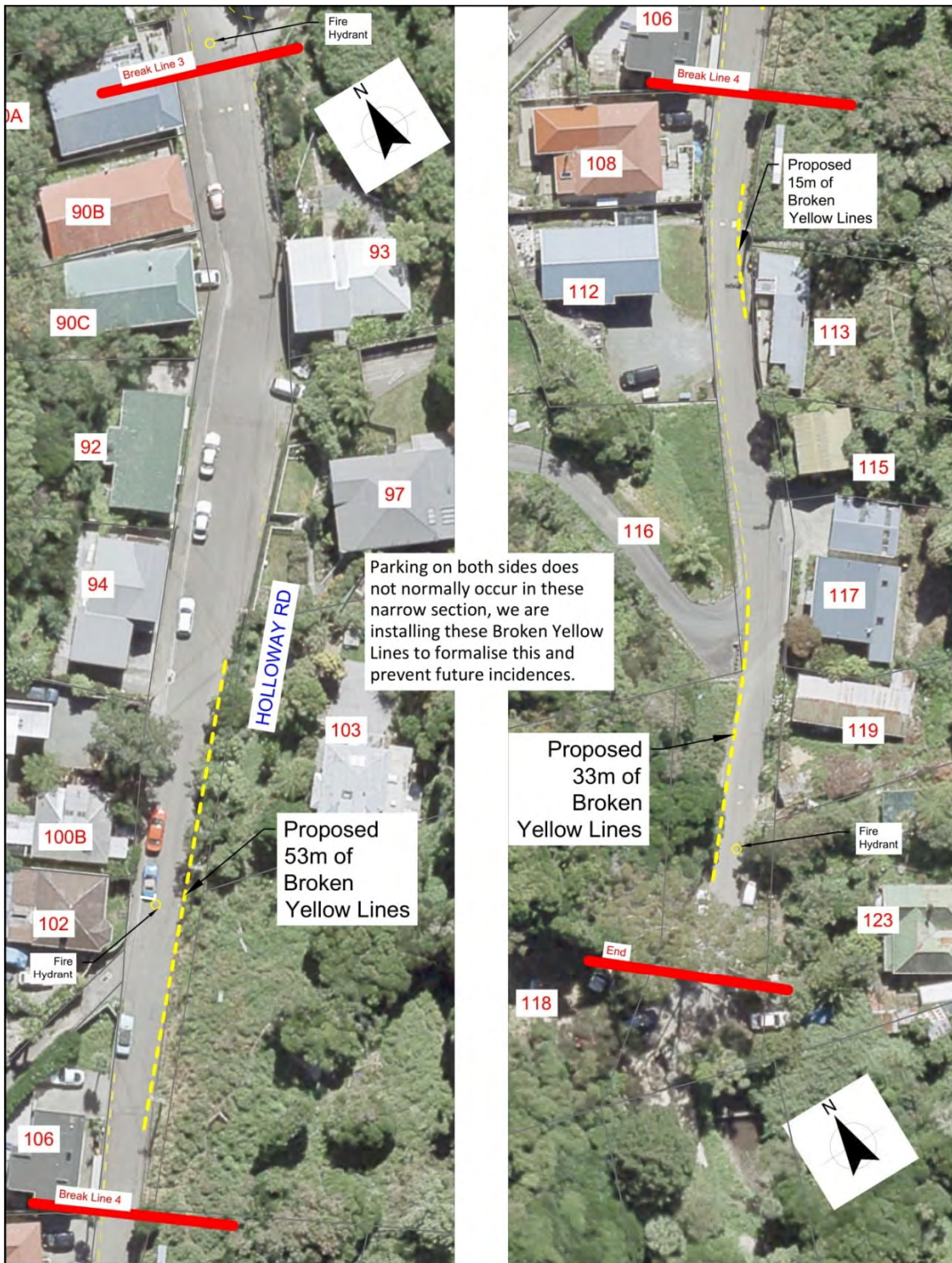
## Traffic Resolution Plan: TR05-21 Holloway Road, Aro Velley– No Stopping At All Times



# We are proposing a change in your area



# We are proposing a change in your area



**LEGEND**

- Existing Broken Yellow Lines
- Proposed No Stopping At All Times Restrictions

0 12 24 36 48 60 72

SCALE 1:1200 ORIGINAL SIZE

Drawn: Z Moodie	Designer: Z Moodie	Project: Holloway Road Proposed Broken Yellow Lines TR05-21						
Drafting Check: W Ferguson	Design Check: W Ferguson							
Approved (Project Director): C Kingsford	Date:							
Scale: (A4 1:1200)	A4	Drawing Ref:						
<table border="1"> <tr> <td>Z Moodie</td> <td>16-Nov-21</td> </tr> <tr> <td>Drawn</td> <td>Project Director</td> </tr> <tr> <td>App Manager</td> <td>Date</td> </tr> </table>		Z Moodie	16-Nov-21	Drawn	Project Director	App Manager	Date	<p><b>Absolutely Positively</b> <b>Wellington City Council</b> Me Heke Ki Pōneke</p>
Z Moodie	16-Nov-21							
Drawn	Project Director							
App Manager	Date							

# We are proposing a change in your area

## Legal Description:

### Add to Schedule D (No Stopping) of the Traffic Resolutions Schedule

Column One	Column Two	Column Three
<b>Holloway Road</b>	<i>No Stopping, At All Times</i>	<i>North side, commencing 20 metres east of its intersection with Old Bullock Road (Grid coordinates X=1,747,285.2m Y=5,427,083.1) and extending in an easterly direction following the northern kerb line for 10 metres.</i>
<b>Holloway Road</b>	<i>No Stopping, At All Times</i>	<i>South side, commencing 12 metres west of its intersection with Old Bullock Road (Grid coordinates X=1,747,285.2m Y=5,427,083.1) and extending in a westerly direction following the southern kerb line for 22 metres.</i>
<b>Holloway Road</b>	<i>No Stopping, At All Times</i>	<i>North side, commencing 153 metres south-west of its intersection with Old Bullock Road (Grid coordinates X=1,747,285.2m Y=5,427,083.1) and extending in a westerly direction following the northern kerb line for 50 metres.</i>
<b>Holloway Road</b>	<i>No Stopping, At All Times</i>	<i>North side, commencing 245 metres south-west of its intersection with Old Bullock Road (Grid coordinates X=1,747,285.2m Y=5,427,083.1) and extending in a westerly direction following the northern kerb line for 42 metres.</i>
<b>Holloway Road</b>	<i>No Stopping, At All Times</i>	<i>West side, commencing 38 metres south of its intersection with Brosnahan Terrace (Grid coordinates X=1,747,101.9m Y=5,426,859.0) and extending in a southerly direction following the west kerb line for 18 metres.</i>
<b>Holloway Road</b>	<i>No Stopping, At All Times</i>	<i>South-east side, commencing 135 metres south of its intersection with Brosnahan Terrace (Grid coordinates X=1,747,101.9m Y=5,426,859.0) and extending in a southerly direction following the eastern kerb line for 53 metres.</i>

# We are proposing a change in your area

<b>Holloway Road</b>	<i>No Stopping, At All Times</i>	<i>South-east side, commencing 209 metres south of its intersection with Brosnahan Terrace (Grid coordinates X=1,747,101.9m Y=5,426,859.0) and extending in a southerly direction following the eastern kerb line for 15 metres.</i>
<b>Holloway Road</b>	<i>No Stopping, At All Times</i>	<i>West side, commencing 255 metres south of its intersection with Brosnahan Terrace (Grid coordinates X=1,747,101.9m Y=5,426,859.0) and extending in a southerly direction following the west kerb line for 33 metres.</i>

**Prepared By:** Zackary Moodie (Intermediate Transport Engineer)

**Approved By:** Soon Teck Kong (Transport Engineering & Operations Manager)

**Date:** 16/11/2020