

JUNE 2024



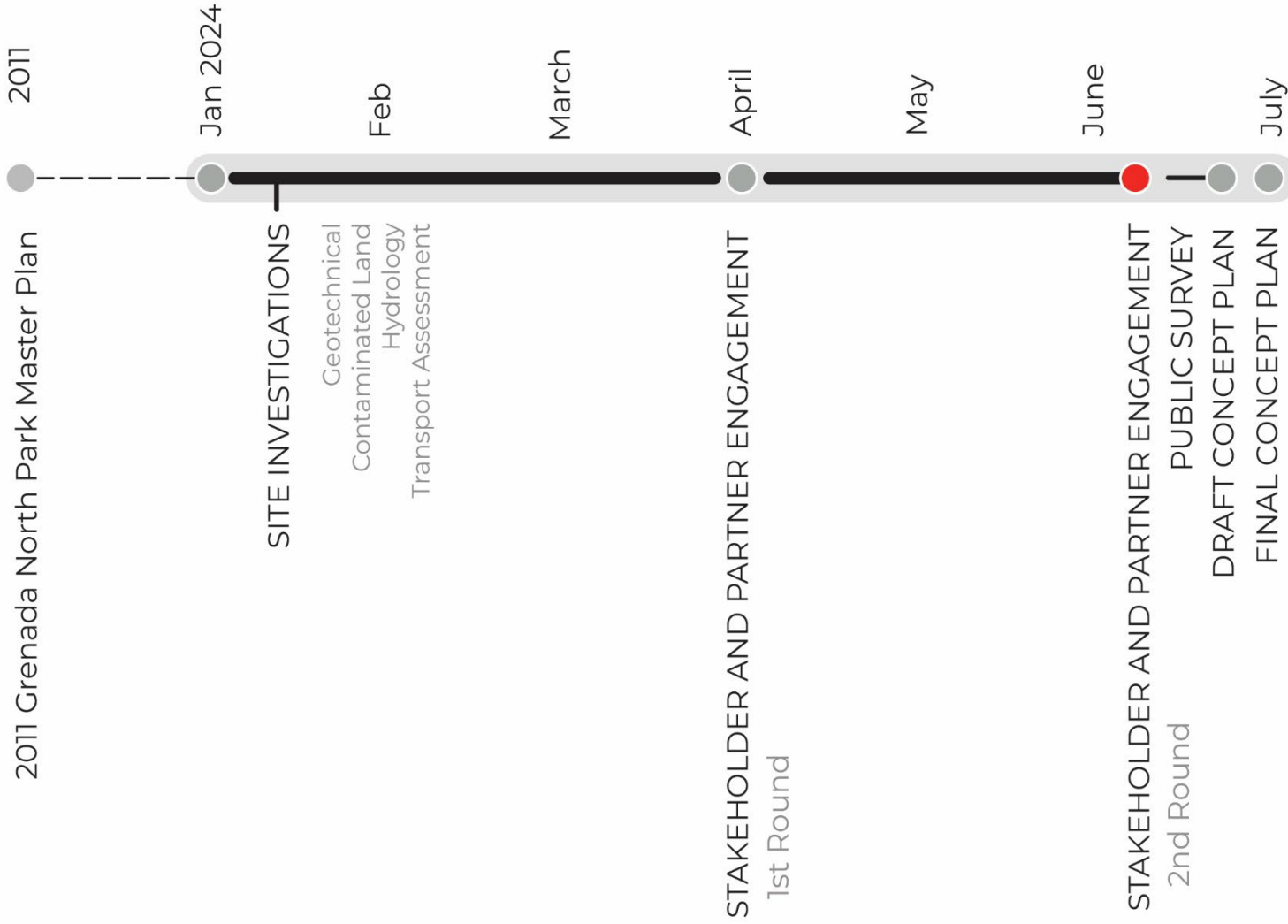
# GRENADA NORTH PARK

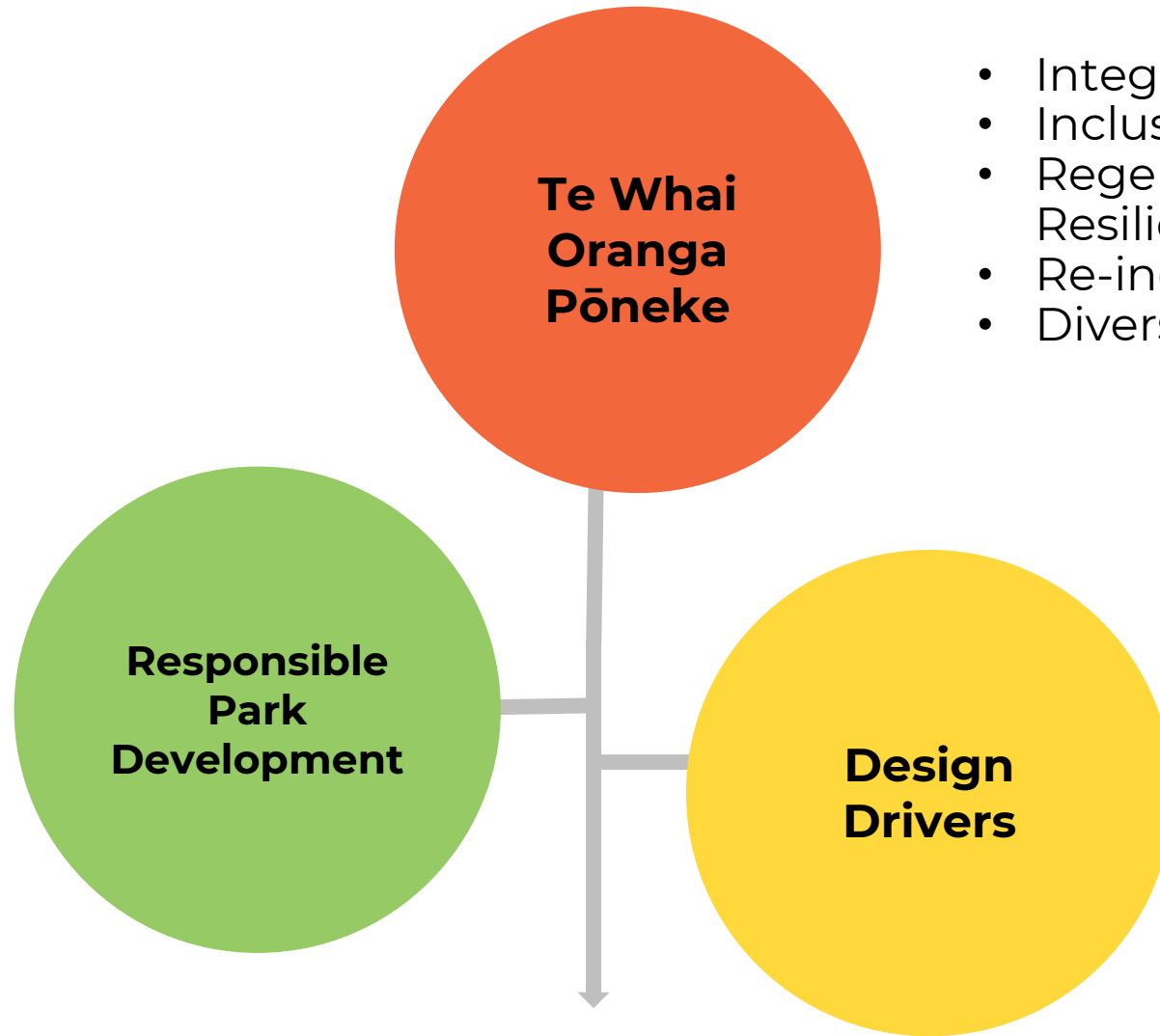




# GRENADA NORTH PARK PLAN

## PROJECT SCHEDULE





- Cost
- Carbon
- Energy Use
- Water
- Materials

- Integrated
- Inclusive
- Regenerating and Resilient
- Re-indigenizing
- Diverse

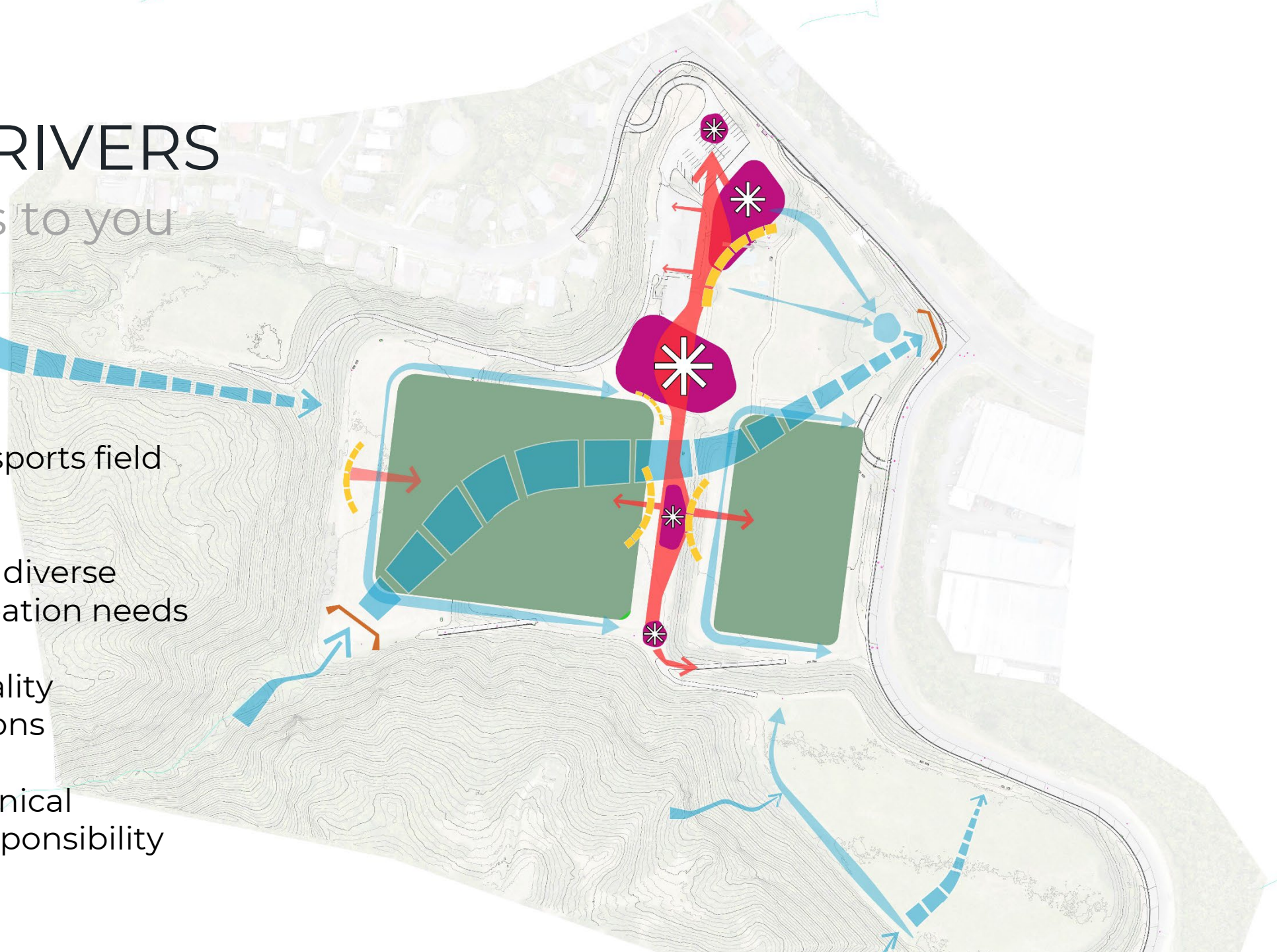
- Flexible sports configuration
- Diverse recreational needs and options
- Improve field quality throughout seasons
- Geotechnical resiliency and responsibility

# GRENADA NORTH MASTER PLAN

# DESIGN DRIVERS

What matters to you

- Create a flexible sports field “skeleton”
- Organize around diverse community recreation needs
- Improve field quality throughout seasons
- Develop geotechnical resiliency and responsibility





# GRENADA NORTH PARK PLAN



### FORMAL SPORT ZONES

- Natural Turf Field
- Artificial Field
- Courts

- Indicative facilities and toilets location

### INFORMAL RECREATION ZONES

- Playground & Nature Play
  - Informal Recreation Area
  - Play nodes
  - Stabilized Soft surface
- } Circuit paths

### COMMUNITY ZONES

- Central Promenade
- Plaza / Gathering
- Spectating space
- Parking

### LOCATIONS

- CENTRAL ZONE**
- ① Main entrance car and coach park
- ② Courts
- ③ Formal play zone
- ④ Central plaza and gathering
- ⑤ Informal recreation area
- ⑥ Stormwater wetland
- CORE FIELD ZONE**
- ⑦ Upper natural turf fields
- ⑧ Play node
- ⑨ Central promenade
- ⑩ Lower artificial turf fields
- ⑪ Practice area
- ⑫ Spectating seat walls and steps
- ⑬ Bush circuit trail
- ⑭ Trailhead



# FLEXIBLE SPORTS FIELD SKELETON

*What we heard*

*How the plan accomplishes this*

As development increases and changes around the park, make the field configuration flexible to a variety of sports (junior to adult to senior).

Fit appropriate field sizes for high quality play.

# SPORT AND RECREATION



**Legend**

**FORMAL SPORT**

- Natural Turf Field
- Artificial Field
- Courts
- Indicative facilities and toilets location

**INFORMAL RECREATION**

- Playground & Nature Play
- Informal Recreation Area
- Play nodes
- Stabilized Soft surface

P Parking

Circuit paths

**NATURAL TURF FIELD (140 X 120 m - not including run-off space)**

SUMMER		
SPORT	SIZE	NUMBER
Cricket (nets not included)	50 m radius	1
Athletics Track	flexible	1
High Jump	20 m radius	1
Long Jump	40 m run	1
Softball		1
WINTER		
Rugby	68 x 120 m	2
Premier Football	68 x 100 m	2
Junior Football	60 x 40 m	4
Junior Football	50 x 30 m	6
Junior Football	30 x 20 m	8

**ARTIFICIAL TURF FIELD (120 X 68 m - not including run-off space or practice space)**

SUMMER		
SPORT	SIZE	NUMBER
Premier Football	68 x 100 m	1
Junior Football	60 x 40 m	2
Junior Football	50 x 30 m	3
Junior Football	30 x 20 m	4
WINTER		
Rugby	68 x 120 m	1
Premier Football	68 x 100 m	1
Junior Football	60 x 40 m	2
Junior Football	50 x 30 m	3
Junior Football	30 x 20 m	4

# DIVERSE COMMUNITY RECREATION NEEDS

## *What we heard*

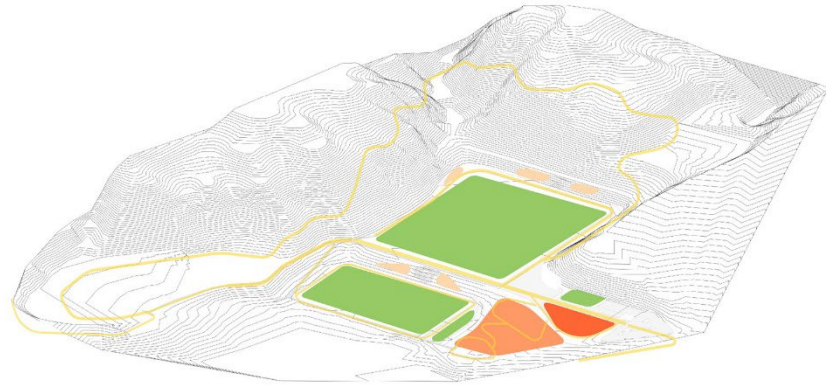
*How the plan accomplishes this*

*Create passive recreation opportunities (walking, informal play)*

*Have opportunities for multi-age and multi-generational families*



**wsp** **GRENADA NORTH PARK PLAN**



**FORMAL SPORT ZONES**

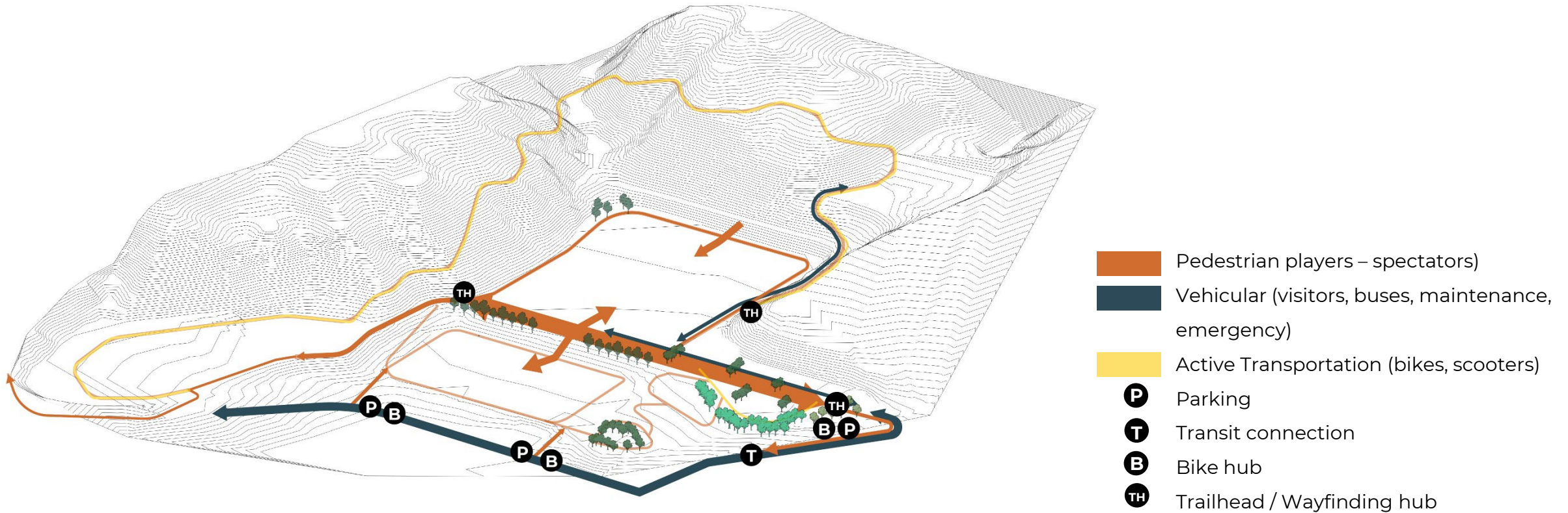


**INFORMAL RECREATION ZONES**



# DIVERSE COMMUNITY RECREATION NEEDS

*What we heard*  
*How the plan accomplishes this*



# IMPROVE FIELD QUALITY

## *What we heard*

*How the plan accomplishes this*

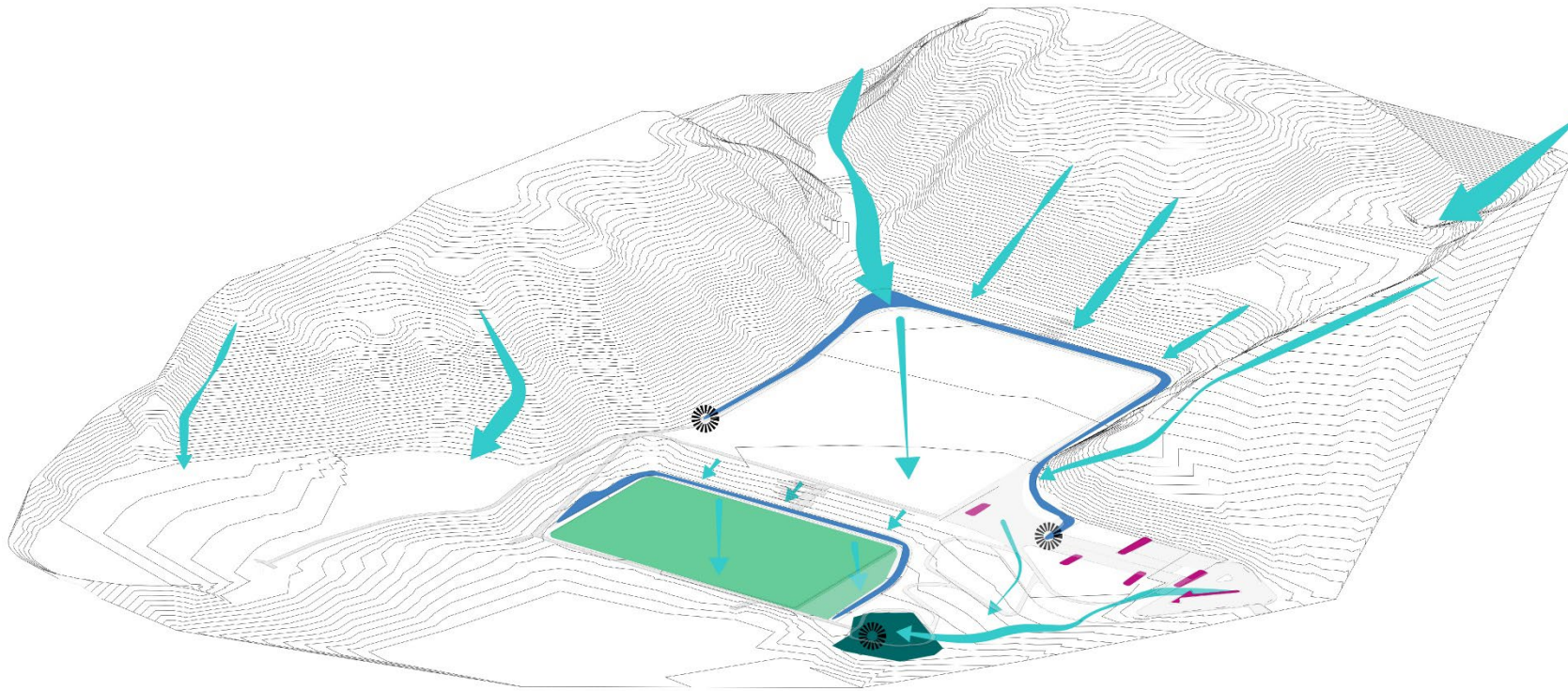
*Improve drainage issues to make the quality of play better; over longer periods of time.*

*Integrate an artificial field surface.*

# IMPROVE FIELD QUALITY

*What we heard*

*How the plan accomplishes this*



## CONVEYANCE SWALES

6m wide swales situated at the bottom of slopes and surrounding fields. They collect and move water infiltrating along the path. Filled with native grasses and plants, they naturalize the edge of paths and fields.



## STORMWATER WETLAND


A constructed depression that is often perennially wet and filled with native vegetation. It connects into the stormwater network during peak periods of rainfall.



## RAIN GARDEN

Small scale facilities planted with native plants and infiltrate stormwater. As they don't connect into the stormwater network, rain gardens do not factor into the stormwater calculations.




 Conveyance and infiltration swales

 Stormwater wetland

 Rain gardens

 Artificial turf field

 Connection point into stormwater system

# GEOTECHNICAL RESILIENCY

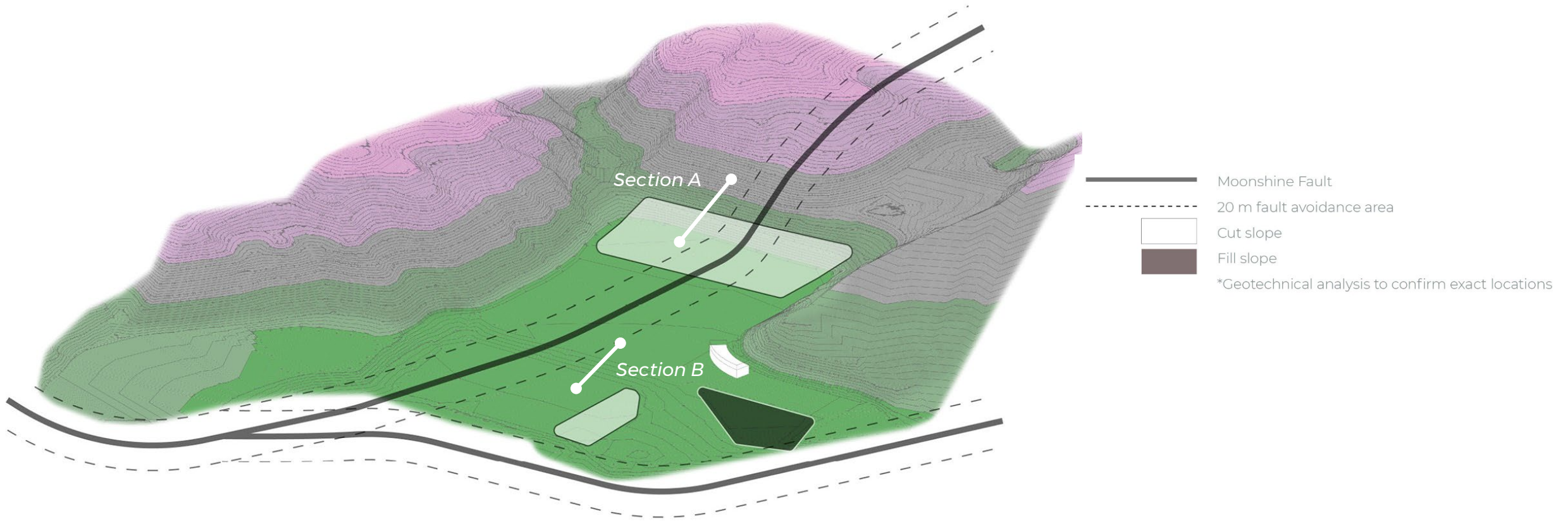
*What we heard*  
*How the plan accomplishes this*

*Find the solution that is as “light” on the landscape as possible while achieving sporting goals*

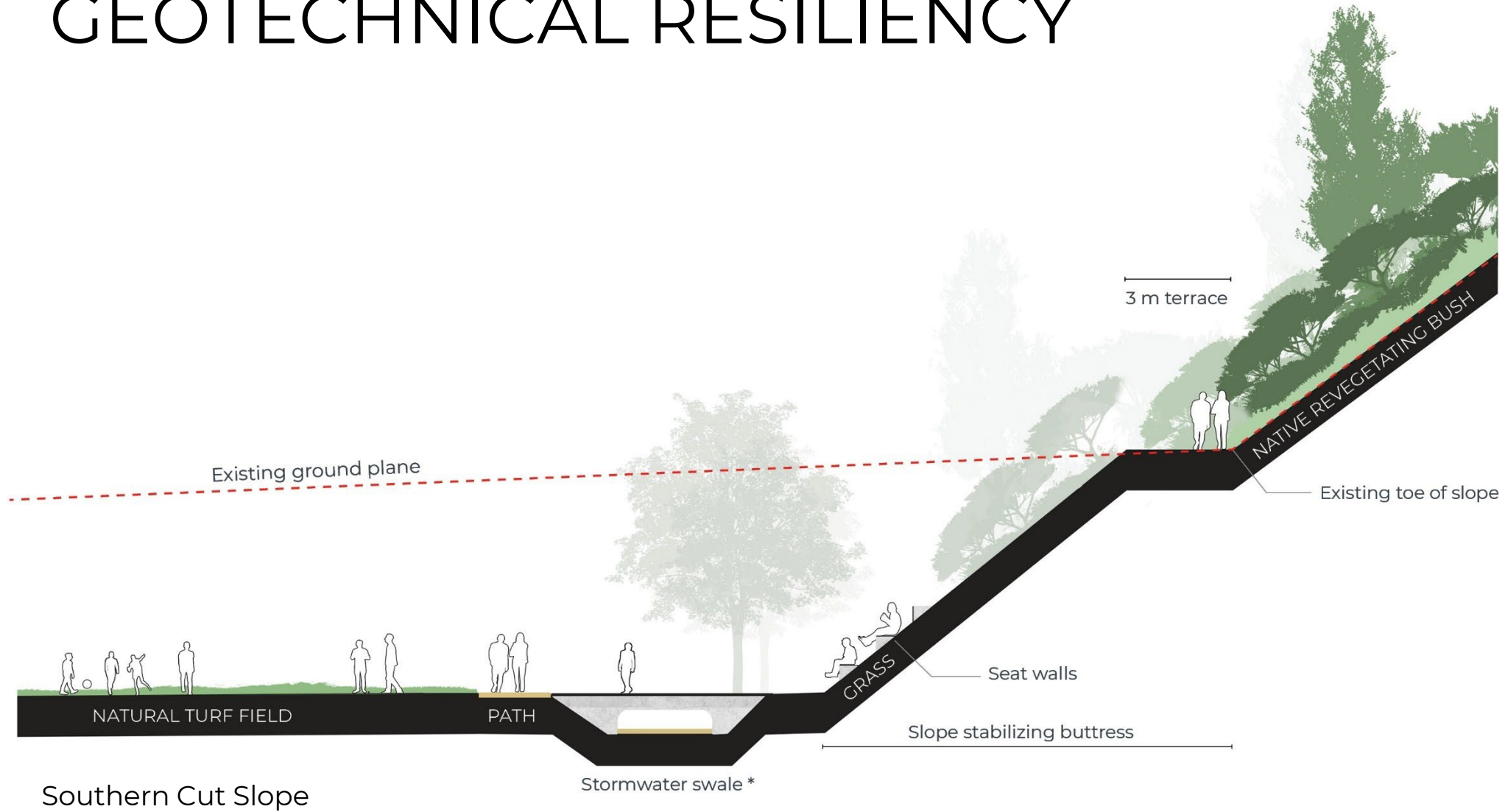
*Respect seismic concerns in building and infrastructure*

*Create a park that can withstand seismic events as much as possible; with less impactful potential damage; and lower cost remediation in the case of an event.*

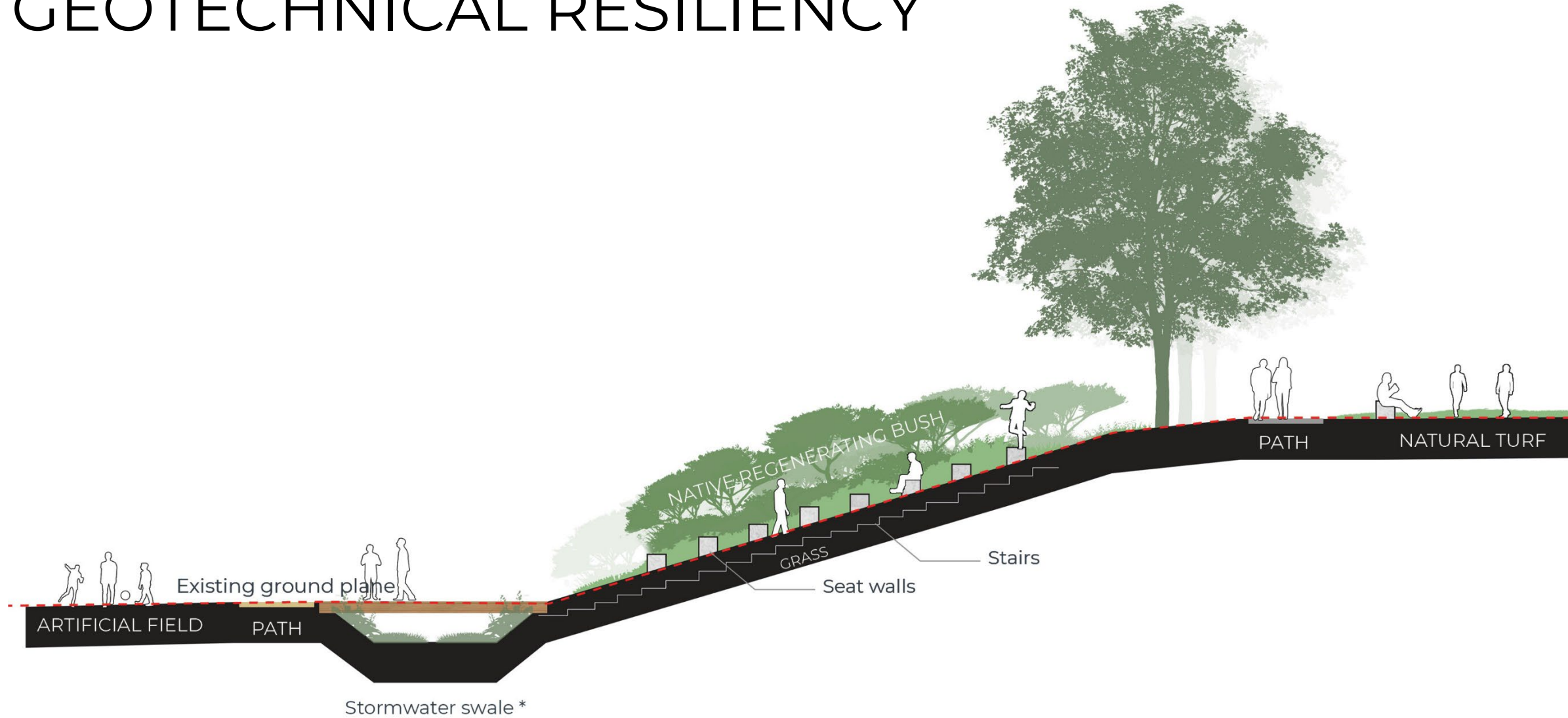
# GEOTECHNICAL RESILIENCY



# GEOTECHNICAL RESILIENCY



# GEOTECHNICAL RESILIENCY







[wsp.com/nz](https://wsp.com/nz)

