

## 3 MANAGEMENT SECTOR PLANS

### 3.1 SECTOR 1

#### **Khandallah, Broadmeadows, Ngaio, Crofton Downs, Kaiwharawhara, Ngauranga Gorge**

A unique feature of this sector is the harbour escarpment and the steep gullies off Onslow Road and Homebush Road. Where topography permits, the bush reserves have been developed to include tracks, with play areas, kick-about space or informal recreation space sometimes also provided.

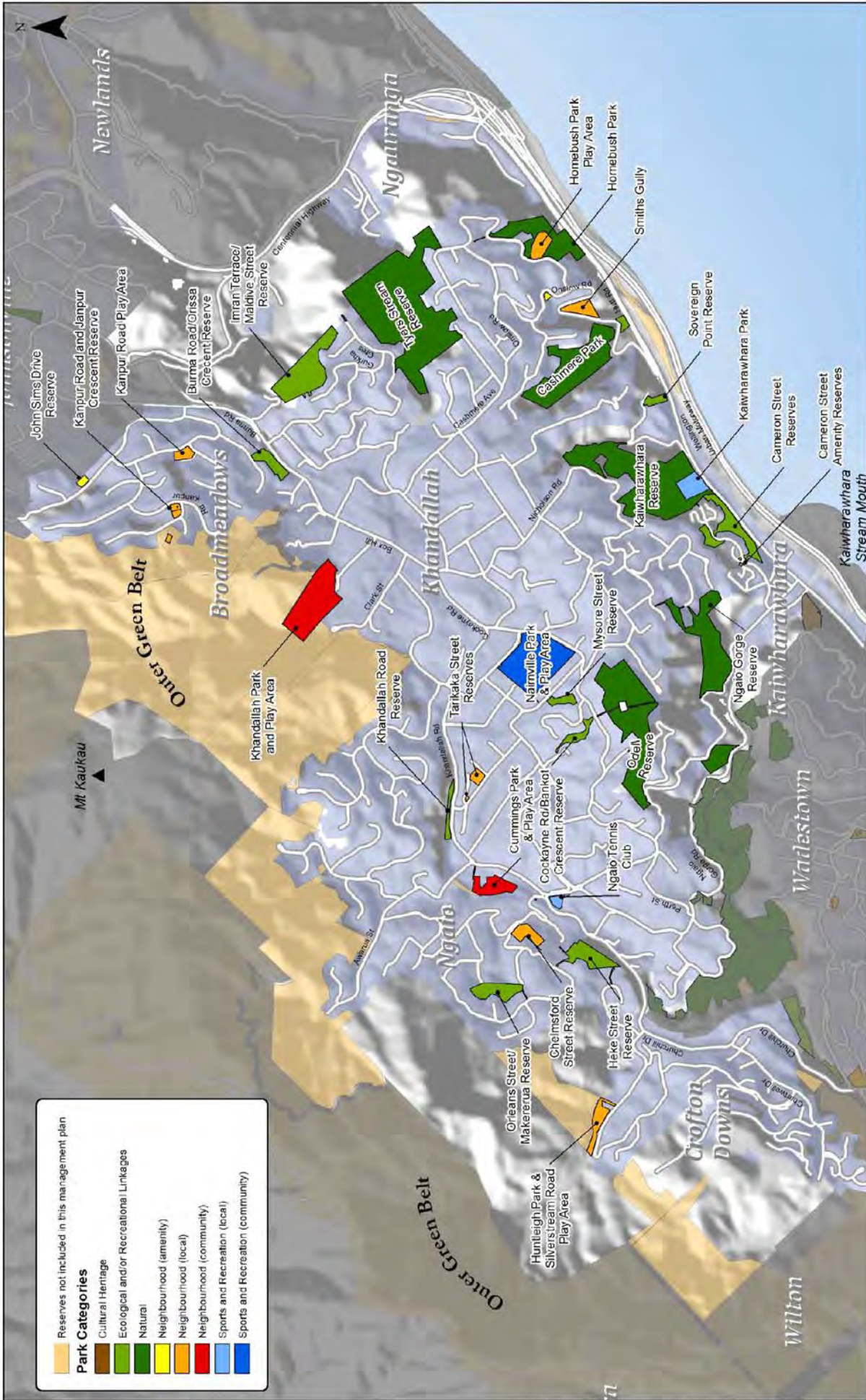
The Outer Green Belt (OGB) extends right down into Broadmeadows, Crofton Downs, Ngaio, and Khandallah and provides a prominent natural setting for residential housing in this area and access to the extensive track system.

The suburban reserves enhance ecological connectivity between the OGB and the harbour via the large natural gully reserves and smaller pockets of open space.

The Sector 1 boundary is based on the suburb boundaries. Parts of the OGB fall inside this boundary but is managed under the Outer Green Belt Management Plan, with the exception of the Silverstream Road Play Area and the Khandallah Play Area. These two areas are included for completeness in assessing neighbourhood park and play space. This sector does not include Trelissick Park.

The open space network is made up of the following.

- One Sport and Recreation (community) category park – Nairville Park, which has a 3/4 size artificial field, three winter fields, two summer cricket blocks, a skateboard ramp, and a community playground. Nairville Recreation Centre is located on the park and provides a range of indoor recreation activities and programmes, changing rooms, and public toilets during its hours of operation.
- Kaiwharawhara Park on Hutt Road has one winter field and changing rooms.
- Ngaio Tennis Club leases a recreation reserve on the corner of Crofton Road and Waikowhai Street.
- 12 neighbourhood parks, including Khandallah Park and Play Area and Silverstream Road Play Area.
- Several large bush reserves. Kaiwharawhara Reserve, Cashmere Park, and Homebush Park form part of the harbour escarpment. Tyers Stream Reserve is above Ngauranga Gorge and Odell Reserve is on the skyline above Ngaio Gorge.
- A number of smaller ecological and/or recreational link reserves (some unnamed) that provide amenity as pockets of “green” in the suburban landscape, and as ecological links between larger bush reserves. Two examples are the Cameron Street Reserves and Mysore Street Reserve.



Absolutely Positively  
Wellington City Council  
ME HEAR KI PONGE

0 250 500 1,000  
metres  
Scale 1:22,000

**Sector 1**  
Map 1 - Reserve Category & Context  
Suburban Reserves in Broadmeadows, Khandallah, Ngaio, Crofton Downs, and Kaiwharawhara.

Figure 2: Urban reserves and recreation linkages. Open Space Planning/Urban Reserves/Recreation/Map 1: Urban Reserves



### 3.1.1 ASSESSMENT OF THE NETWORK

Sector 1 Map 1 shows all of the parks (by category) in the context of the built environment and other open space such as the Outer Green Belt.

Sector 1 Map 2 shows specific use, including playgrounds, leases on reserves, dog exercise areas, and the track network. Schools are also shown to help complete the picture of outdoor recreation opportunities. Ecological sites of significance and heritage trees are not mapped but have been assessed in determining the range of values each park holds<sup>16</sup>.

Sector 1 has a good variety of open space and recreation opportunities. There is a large, well-developed Sport and Recreation (community) category park at Nairnville Park, and a variety of neighbourhood parks that vary in size and character. Most of the parks have multiple values, which strengthens both the individual park value and the network value.

For example, Cummings Park has ecological value associated with protection and enhancement of indigenous vegetation and the stream; amenity value for the village and neighbouring properties; cultural value associated with a heritage tree; and a variety of recreation opportunities from walking, formal and informal play, picnicking and dog exercise. It also complements other adjacent community facilities such as the library and has a long history with early European settlement land use and local resident association links.

Analysis of a 10-minute or 600 metre walking distance on the street network shows gaps in formal play area provision in central and northern Khandallah, Crofton Downs, and the north western area of Ngaio above Fox Street.

The area north of Fox Street is surrounded by the Outer Green Belt but, like Tyers Stream Reserve, access off the street network is constrained by very steep topography. There is a small parcel of land at Vasanta Avenue that could function as a neighbourhood park but due to the fragmented street network would only serve a small area and still leave a gap in the Satara Crescent area.

The Khandallah Village playground is not an ideal space but there is no land to the north that would be more suitable. The areas north of the Khandallah Village and to the east and west of Tyers Stream Reserve are lacking but again, there is no land available that could be developed further for either formal play or outdoor recreation generally.

There is the potential to work with schools such as Crofton Downs School and Cashmere Ave School where the gaps have been identified. Crofton Downs School playing fields and open space is regularly used by the community and the school supports and encourages use of all its facilities by the community. Any public access to the Cashmere Avenue School grounds would be a significant benefit to the local community in terms of open space and play opportunities.

The Khandallah Tennis & Squash Club is a well-established and currently well-supported sports facility in this area. It is not on Council or public reserve land.

Investigating track development in Tyers Stream Reserve may provide northern Khandallah residents with walking and/or cycling opportunities, however, there are significant constraints given the steep topography of the reserve.

An area around Khandallah Village has been identified as being potentially suitable for a zone change to accommodate medium-density housing<sup>17</sup>. Should this happen, there will need to be an associated provision for land for outdoor recreation as there is already a gap in this area that may be exacerbated with increased population.

<sup>16</sup> Mapping of Sites of Ecological Significance can be found on the Wellington City Council website.

<sup>17</sup> Proposed in draft Wellington Urban Growth Plan

### 3.1.1.1 Actions – assessment of the network

- a) Address the gap in both play and open space recreation access in the north eastern corner of this sector.
- b) Work with local schools and sports clubs to investigate community use and access to open space and play opportunities.

### 3.1.2 PLAYGROUNDS

Play opportunities in this sector vary in their context from a village setting (Khandallah library) to a sports and recreation park or neighbourhood park type setting (Nairnville Park, Kanpur Park and Cummings Park) to a more remote, bush type setting (Homebush Park).

There is a gap in provision of playgrounds, as previously described.

### 3.1.3 DOG EXERCISE AREAS

There are seven off-leash dog exercise areas, one each located in Trelissick Park, Chelmsford Park, Cummings Park, Silverstream Road Reserve, Odell Reserve, Kaiwharawhara Park (restricted access), and Cashmere Park.

The sector is well served with dog exercise areas. In particular, some of the large reserves such as Odell Reserve and the adjacent Trelissick Park provide off-leash walks and links.

The Cummings Park dog exercise area is well used as it is central, easy to access and drive to, and is safe for dogs as its well away from roads. There have been issues raised by other park users around access through the area to other parts of the park and ensuring dogs are restricted to the current designated area. The issue of damage to the turf during the winter months due to intensive use has been mainly resolved.

Any changes to the status of dog exercise areas can only be considered during a review of the Council Dog Policy.

### 3.1.4 TRACK NETWORK

The area has a comprehensive network of tracks, particularly on the western edge within the Outer Green Belt and through Trelissick Park as part of the Sanctuary to Sea Walkway. There are ongoing community track building and planting projects in the Outer Green Belt between Downing Street, the Skyline Track and Silverstream Road (the "Silversky" track). A community group is establishing a dual-use track network (walking and mountain biking) throughout the area linking suburban areas with the Outer Green Belt in partnership with the Council.

There are tracks through the bush at Odell Reserve, Heke Street Reserve, and Makererua Street Reserve that provide more local opportunities for off-road walking in the neighbourhood and important links to the Outer Green Belt tracks. Linking Trelissick Park and Odell Reserve could provide a further walking opportunity; it is not a current priority, however, and it is likely that access through private property would be needed.

The Northern Walkway and national walkway Te Araroa pass through this sector.

#### 3.1.4.1 Actions – track network

- a) Develop track links between Downing Street, Silverstream Road and through Huntleigh Park to Huntleigh Park Way (connects the street network around Huntleigh Park and Silverstream Road Play Area).
- b) Investigate a link from Homebush Park around to Tyers Stream Reserve as part of future subdivision of land above Jarden Mile.

- c) Investigate a new track link into Chelmsford Park from Heke Street.
- d) Investigate a future track link between the Hutt Road and Khandallah via Cashmere Park.
- e) Investigate opportunities for tracks from Vasanta Avenue and Satara Crescent (northwest Ngaio) areas into the Outer Green Belt
- f) Investigate the need and feasibility of a track between the Kaiwharawhara Park sportsfield and the Bridle Track.

### 3.1.5 ECOLOGY AND INDIGENOUS BIODIVERSITY

The linear nature of the rail corridor in this sector provides opportunity for ecological links.

Tyers Stream reserve is a very large parcel of land with high ecological and indigenous biodiversity values. Among other indigenous plant species, it contains northern rata, puka and wharangi<sup>18</sup>. Access to the reserve is constrained by topography but the landscape and ecological values of the site are such that physical access is not a significant issue.

There are several parcels of private land in this sector adjacent to the Outer Green Belt with important landscape and ecological values. They are zoned open space under the District Plan. They have the potential to provide new track links to the Skyline Walkway and are a priority for protection and/or acquisition for their ecological significance and the restoration and track work already under way.

The Girl Guide Association of NZ allows access through its seven-hectare block of land between Silverstream Road and Huntleigh Park Reserve. The Council carries out possum control in the block and the community has started restoration of the stream between the site and Silverstream Road.

There are sites of ecological significance that are only partially contained within reserve land and extend onto adjacent private land. At Makererua Reserve there is a local community group working to restore indigenous vegetation and control weeds. The group's understanding of the values of their environment and their involvement is likely to lead to better ecological outcomes in their own properties. There is potential for a similar scenario with the residents at Amritsar Street where private property extends down the steep vegetated banks off the ridge to meet the boundary of reserve land. Both the private and reserve land is ecologically significant.

Odell Reserve, Nairnville Park and the small reserves at Mysore Street and Bankot Crescent play an important role in supporting ecological connectivity between the Outer Green Belt, Trelissick Park and the escarpment reserves. Large trees and significant indigenous bush cover should be retained and enhanced in the natural and ecological link reserves and, where it does not interfere with the primary purpose of the reserve, large trees should be planted at Nairnville Park to support this connectivity function.

#### 3.1.5.1 Actions – ecology and biodiversity

- a) Investigate the protection and/or acquisition of reserve land for landscape, ecological, and recreation purposes as part of any proposed subdivision of the land situated to the west of Silverstream Road.
- b) Investigate the protection and/or acquisition of the forest remnant north of Homebush Park as part of any future subdivision of this private land, and enable a track link between this park and Tyers Stream Reserve.

<sup>18</sup> *An inventory of the surviving traces of the primary forest of Wellington City*. Compiled for Wellington City Council by Geoff Park Landscape Ecology and History. February 1999.

- c) Work with the Girl Guide Association on the future management and protection of its land off Silverstream Road (also potential for recreational outcomes).
- d) Continue working with KiwiRail to develop the rail corridor as an important ecological link and scenic route.

### **3.1.6 COMMUNITY GROUPS AND PARTNERSHIPS**

There is a range of community groups working throughout the reserves in this sector, primarily focussed on ecological restoration work and track building.

Ngaio Crofton Downs Residents Association has a partnership with the Council to realise its long-term vision of Ngaio as a natural amphitheatre in which people and nature are nurtured. This is in line with the Council's objectives of establishing connective corridors and the enhancement of walkways, and recognises the role of indigenous ecosystems.

Volunteers help with maintenance in Odell, Makererua and Chelmsford reserves. Forest and Bird are working on a restoration plan for land at Chartwell Drive. The Bells Track Group and the Green Belters are two more groups doing work in this sector.

The Western Trail Builders group is establishing a track network throughout the western area linking suburban areas with the Outer Green Belt.

There are existing partnerships between schools and the Council in this sector working to improve play area provision and indigenous biodiversity values. Cashmere Ave School and Ngaio School are involved with indigenous planting in their school grounds. Cashmere Ave School is halfway between three key reserve sites with ecological significance so plays an important role in helping manage indigenous biodiversity values within their wider suburban environment.

There is one commercial lease on reserve land on Khandallah Road near the Ngaio Shopping Centre. Cavell Upholstery has a 15-year lease to run their upholstery business. Following the expiry of the lease it is planned to vacate and remove the building.

Wellington Free Kindergarten (Ngaio) is adjacent to Cummings Park on Ottawa Road.

Ngaio Lawn Tennis Club Inc has two artificial courts and a clubhouse on Waikowhai Road. Weed clearance and restoration work in the stream area would diversify the potential values of the reserve.

| Sector 1 Khandallah, Broadmeadows, Ngaio, Crofton Downs, and Kaiwharawhara |  |               |                   |              |  |                         |  |
|--|--|---------------|-------------------|--------------|--|-------------------------|--|
| Reserve  | Park Category                          | Land Area sqm | Legal Description | CT Reference | Reserve classification                 | Proposed classification | Actions  |
| Khandallah Park and Play Area  | Neighbourhood (community)              | n/a           | n/a               | n/a          | n/a                                    |                         | Falls under Outer Green Belt Management. Plays a key role, however, in suburban reserves network in Sector 1, in particular for play provision. Officers are continuing to work on the long-term future of the outdoor pool, which will be presented to the Council within the next three years.<br><br>This will inform a comprehensive redesign of the area. |
| Kanpur Road and Janpur Crescent Reserve                                    | Neighbourhood (local)                  | 527.00        | Lot 2 DP 82772    | 49C/101      | Local Purpose Reserve (Public Utility) |                         |  |
|  |  | 530.00        | Lot 175 DP 64066  | 33A/716      | Local Purpose Reserve (Utility)        |                         |  |
|  |  | 1,191.00      | Lot 2 DP 64066    | 49C/516      | Local Purpose Reserve (Public Utility) |                         |  |
| Kanpur Road Play Area  | Neighbourhood (local)                  | 481.00        | Lot 38 DP 32542   | 25D/481      | Recreation Reserve                     |                         |  |
|  |  | 559.00        | Lot 39 DP 32542   | 25D/482      | Recreation Reserve                     |                         |  |
|  |  | 627.00        | Lot 40 DP 32542   | 25D/483      | Recreation Reserve                     |                         |  |
|  |  | 1,961.00      | Lot 52 DP 41163   | 25D/484      | Recreation Reserve                     |                         |  |
| John Sims Drive Reserve  | Neighbourhood (amenity)                | 1,513.00      | Lot 2 DP 86024    | 53D/204      | Recreation Reserve                     |                         | Continue support of Onslow College work (Waipahihi Stream Project).  |
| Burma Road/Orissa Crescent Reserve   | Ecological and/or Recreational Linkage | 7,964.00      | Lot 34 DP 40238   | 25D/462      | Recreation Reserve                     | Scenic B Reserve        |  |



| Sector 1 Khandallah, Broadmeadows, Ngaio, Crofton Downs, and Kaiwharawhara                 |  |                      |  |                         |                             |                         |   |
|--|--|----------------------|--|-------------------------|-----------------------------|-------------------------|---|
| Reserve  | Park Category  | Land Area sqm        | Legal Description  | CT Reference            | Reserve classification      | Proposed classification | Actions   |
| Imran Terrace/<br>Maldiva Street<br>Reserve  | Ecological<br>and/or<br>Recreational<br>linkage        | 36,118.00            | Lot 18 DP 79675  | 46A/544                 | Recreation Reserve          | Scenic B Reserve        |   |
| Gurkha Crescent<br>accessway   | Ecological<br>and/or<br>Recreational<br>Linkage        | 198.00               | Lot 44 DP 62258  | 32D/192                 | Recreation Reserve          |                         |   |
| Tyers Stream<br><br>Homebush Park and<br>Play Area   | Natural<br><br>Natural and<br>Neighbourhood<br>(local) | 349.00               | Lot 6 DP 340944  | 168247                  | Fee Simple                  | Scenic A Reserve        | Continue restoration work within<br>Tyers Stream Reserve.<br><br>Continue to investigate opportunities<br>for pedestrian access into the<br>reserve.  |
|  |  | 814.00               | Lot 1 DP 13918   | 46C/677                 | Fee Simple                  | Scenic A Reserve        |   |
|  |  | 920.00               | Lot 3 DP 22019   | 924/2                   | Fee Simple                  | Scenic A Reserve        | Investigate a track link from<br>Homebush Park around to Tyers<br>Stream Reserve as part of future<br>subdivision of land above Jarden<br>Mile.<br><br>Potential to improve Homebush Play<br>Area by developing a second<br>walkway access off Homebush Road. |
|  |  | 147,500.00           | Lot 3 DP 90841   | 58C/631                 | Fee Simple                  | Scenic A Reserve        |   |
|  |  | 920.00               | Lot 2 DP 22019   | 924/1                   | Fee Simple                  | Scenic A Reserve        |   |
|  |  | 47,318.00            | Lot 1 DP 87936 &<br>Lot 2 DP 89053   | 58C/667                 | Fee Simple                  | Recreation Reserve      |   |
| 4,699.00   | Lot 3 DP 65651   | 10C/482<br>cancelled | Recreation Reserve   | Scenic A Reserve        |                             |                         |   |
| Cashmere Park and<br>Onslow Road<br>amenity reserve<br>(including Lohia<br>Street Reserve) | Natural and<br>Neighbourhood<br>(amenity)              | 2,080.00             | Lot 1 DP 368293  | 277464                  | Recreation Reserve          | Scenic B Reserve        | Review the use and role of the small<br>amenity reserve off Cashmere<br>Avenue.   |
|  |  | 43,093.00            | Pt Lot 1-2 DP<br>9871, also known<br>as Pt Land<br>Bordered Green<br>DP 9871 as<br>shown on the CT | 581/130 pt<br>cancelled | Fee Simple                  | Scenic B Reserve        |   |
|  |  | 1,187.00             | Pt Lot 1 DP 7494   | 51B/418                 | Fee Simple                  | Scenic B Reserve        |   |
|  |  | 11,756.00            | Lot 3 DP 50680 &<br>Lot 2 DP 50681   | 39A/510                 | Fee Simple for a<br>Reserve | Scenic B Reserve        |   |

| <b>Sector 1 Khandallah, Broadmeadows, Ngaio, Crofton Downs, and Kaiwharawhara</b> |  |                      |  |                     |                               |                                |  |
|---|--|----------------------|--|---------------------|-------------------------------|--------------------------------|--|
| <b>Reserve</b>  | <b>Park Category</b>                     | <b>Land Area sqm</b> | <b>Legal Description</b>   | <b>CT Reference</b> | <b>Reserve classification</b> | <b>Proposed classification</b> | <b>Actions</b>   |
| Hutt Road Reserves  | Ecological and/or linkage                | 2,062.00             | Lot 71 DP 8007   | 464/349             | Fee Simple                    | Scenic B Reserve               |  |
|   |  | 493.00               | Lot 2 DP 70907   | 44A/531             | Fee Simple                    | Scenic B Reserve               |  |
| Smith's Gully   | Neighbourhood (local)                    | 6,789.00             | Lot 67-69 DP 8007  | 643/46              | Recreation Reserve            |                                |  |
| Sovereign Point Reserve   | Ecological and/or Recreational linkage   | 3,350.00             | Lot 12 DP 90708  | 57D/830             | Recreation Reserve            |                                |  |
| Kaiwharawhara Park and Kaiwharawhara Reserve                                      | Sport and Recreation (local) and Natural | 39,587.00            | Pt Lot 24 DP 868   | 22D/674             | Scenic B Reserve              |                                | Investigate the need and feasibility of a track between the sportsfield and the Bridle Track.  |
|   |  | 4,323.00             | Pt Sec 4 Harbour District in Block XI Belmont & Block VII Port Nicholson |                     | Recreation Reserve            |                                |  |
| 12 Hervey Way – access to Kaiwharawhara Park                                      | Ecological and/or linkage                | 40.00                | Lot 4 DP 397952  | 391132              | Recreation Reserve            |                                | Construct and sign-post access.  |
| Cameron Street Amenity Reserves   | Neighbourhood (amenity)                  | 86.00                | Lot 114 DP 321404  | 85382               | Recreation Reserve            |                                |  |
|   |  | 80.00                | Lot 2 DP 342503  | 174565              | Recreation Reserve            |                                |  |
|   |  | 125.00               | Lot 3 DP 342503  | 174566              | Recreation Reserve            |                                |  |
| Cameron Street Scenic Reserves  | Ecological and/or linkage                | 3,981.00             | Lot 2 DP 397952  | 391130              | Recreation Reserve            | Scenic B Reserve               |  |
|   |  | 14,956.00            | Lot 3 DP 397952  | 391131              | Recreation Reserve            | Scenic B Reserve               |  |
| Ngaio Gorge Reserve   | Natural                                  | 5,939.00             | Lot 1 DP 47877   | 30B/648             | Recreation Reserve            | Scenic B Reserve               |  |
|   |  | 2,524.00             | Lot 6 DP 47412   | 30B/647             | Recreation Reserve            | Scenic B Reserve               |  |
|   |  | 37,620.00            | Sec 134 Harbour District   | 21C/720             | Recreation Reserve            | Scenic B Reserve               |  |
| Odell Reserve   | Natural                                  | 25,557.00            | Lot 24 DP 86224  | 53D/914             | Recreation Reserve            |                                | Consider disposal of part of Odell Reserve currently occupied by social housing units if they are no longer required for that purpose. |
|   |  | 50,441.00            | Lot 2 DP 15246 & Lot 1 DP 11829 & Pt Lot 2 DP 11829                      | 589/44              | Recreation Reserve            |                                |  |

| Sector 1 Khandallah, Broadmeadows, Ngaio, Crofton Downs, and Kaiwharawhara |                                  |               |   |                   |                                    |                         |  |
|--|----------------------------------|---------------|---|-------------------|------------------------------------|-------------------------|--|
| Reserve  | Park Category                    | Land Area sqm | Legal Description   | CT Reference      | Reserve classification             | Proposed classification | Actions  |
| Nairnville Park and Play Area  | Sport and Recreation (community) | 2,323.00      | Pt Lot 9 DP 7342  | 374/60            | Recreation Reserve                 |                         | Plant large tree species to support wider indigenous biodiversity values and suburban amenity.   |
|  |                                  | 91.00         | Lot 14 DP 19216   | 721/9             | Fee Simple                         | Recreation Reserve      |  |
|  |                                  | 47,894.00     | Pt Sec 4A Harbour District  | 48C/550           | Recreation Reserve                 |                         |  |
| Mysore Street Reserve  | Ecological and/or linkage        | 4,688.00      | Pt Lot 93 DP 16298  | 41C/610           | Fee Simple                         | Scenic B Reserve        | One of a number of small, centrally located reserves that provide ecological links between larger reserves.  |
| Tarikaka Street Reserve  | Neighbourhood (local)            | 3,153.00      | Lot 96-97 DP 63402  | 38A/216           | Recreation Reserve                 |                         | A good local reserve for informal use.   |
| Cockayne Road/Bankot Crescent Reserve                                      | Ecological and/or linkage        | 5,185.00      | Lot 66 DP 16298   | 946/55 cancelled  | Recreation Reserve                 | Scenic B Reserve        | One of a number of small, centrally located reserves that provide ecological links between larger reserves.  |
| Ngaio Tennis Club  | Sport and Recreation (local)     | 2,934.00      | Pt Lot 5 DP 404 & Lot 6 DP 1727                                   | 210/73 cancelled  | Recreation Reserve                 |                         |  |
| Heke Street Reserve  | Ecological and/or linkage        | 1,018.00      | Lot 39 DP 16539   | 972/12            | Fee Simple                         | Scenic B Reserve        | Investigate a new track link into Chelmsford Park from Heke Street.  |
|  |                                  | 317.00        | Lot 2 DP 64237  | 28B/239 cancelled | Local Purpose Reserve (Access way) |                         |  |
|  |                                  | 223.00        | Lot 2-3 DP 34041 & Lot 6 DP 28824                                 | 13B/303           | Scenic B Reserve                   |                         |  |
|  |                                  | 13,271.00     | Pt Lot 40 DP 16539  | A1/133            | Scenic B Reserve                   |                         |  |
| Huntleigh Park and Silverstream Road Play Area (part)                      | Neighbourhood (local)            | 82,437.00     | Lot 1-2 DP 17482, Lot 26 DP 21990 & Sec 42 Kaiwharawhara District | 24C/599           | Scenic Reserve                     |                         | Falls under Outer Green Belt Management. Plays a key role, however, in suburban reserves network in Sector 1, in particular for play provision. Potential to enhance |

| Sector 1 Khandallah, Broadmeadows, Ngaio, Crofton Downs, and Kaiwharawhara |  |               |   |              |                        |                         |   |
|--|--|---------------|---|--------------|------------------------|-------------------------|---|
| Reserve  | Park Category                          | Land Area sqm | Legal Description   | CT Reference | Reserve classification | Proposed classification | Actions   |
|  |  | 2,147.00      | Pt Sec 7 Kaiwharawhara District                                     | 13B/954      | Recreation Reserve     |                         | values with protection and/or acquisition of nearby private land.<br><br>Work with the Girl Guide Association on the future management and protection of its land off Silverstream Road (ecology/biodiversity and recreational outcomes)  |
| Makererua/Orleans Street Reserve   | Ecological and/or linkage              | 12,514.00     | Pt Lot 1 DP 41453   | 13A/1078     | Recreation Reserve     | Scenic B Reserve        |   |
| Chelmsford Street Reserve  | Neighbourhood (local)                  | 7,094.00      | Sec 17 Kaiwharawhara District                                       | 13A/557      | Recreation Reserve     |                         | Look at ways to improve use, particularly as a dog exercise area.   |
| Cummings Park and Play Area  | Neighbourhood (community)              | 2,727.00      | Pt Sec 7 Kaiwharawhara District                                     | 451/242      | Recreation Reserve     |                         | Retain dog exercise area. Any changes to the status of this dog exercise area can only be considered during a review of the Council Dog Policy.   |
|  |  | 422.00        | Lot 9 DP 26224  | None         | Recreation Reserve     |                         |   |
|  |  | 8,373.00      | Pt Sec 5 & 7 Kaiwharawhara District, Lot 1 DP 9103 & Lot 10 DP 6551 | 421/193      | Recreation Reserve     |                         | The Council will work with the local community to consider the best way to assess and protect if necessary possible remnants of an historic mill.<br><br>Consider how best to make information about the social history, ecological values (the stream and vegetation) and mill site available to the public. |
| Khandallah Road Reserve  | Ecological and/or recreational linkage | 3,928.00      | Lot 98 DP 63403   | 35B/653      | Recreation Reserve     |                         |   |