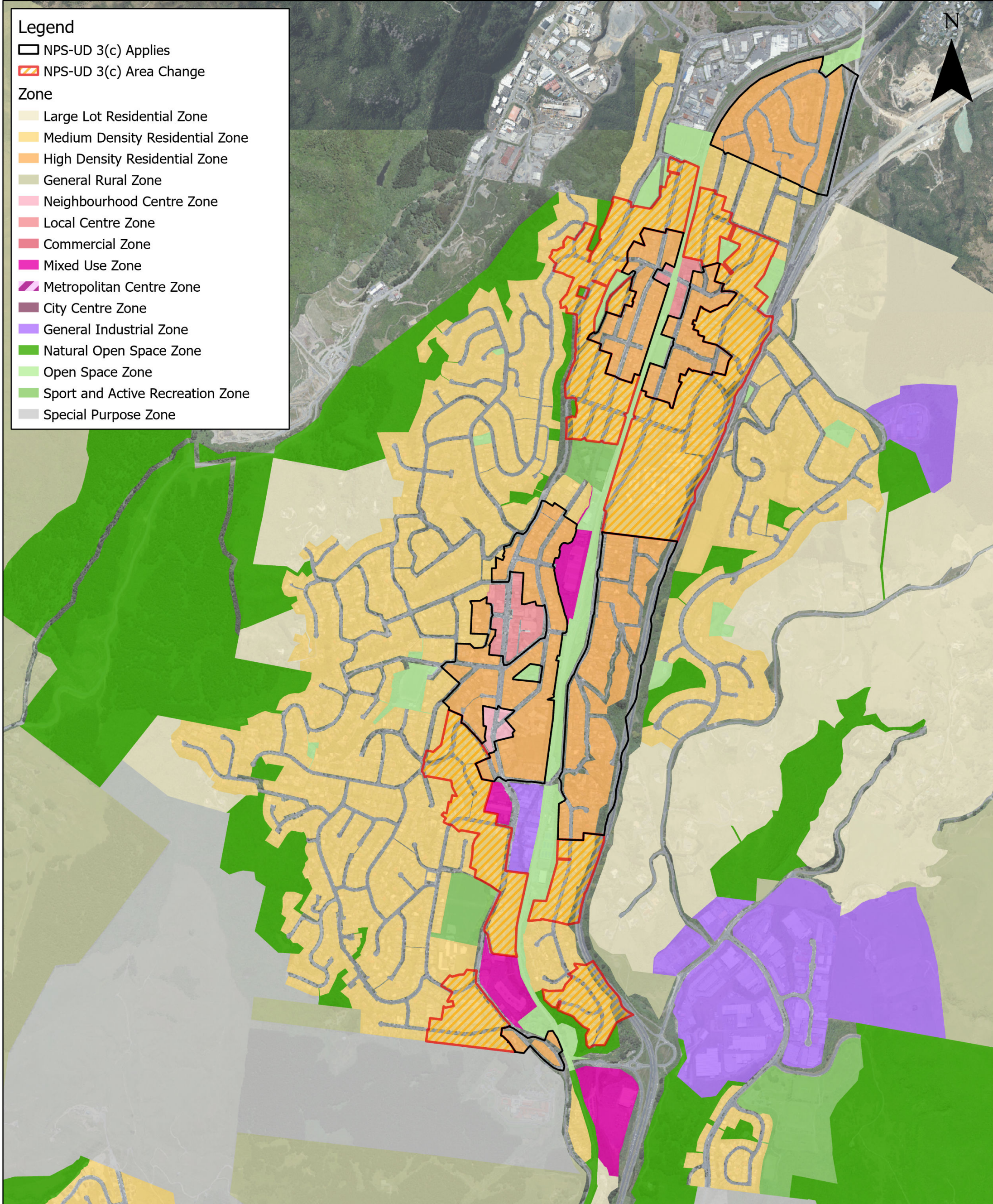


# Wellington City Notified District Plan



## Tawa, Linden, & Grenada North - Change to NPS-UD Policy 3(c) Areas

Date: 6/07/2022

Created by: District Plan Team, Strategic Planning

Contact: [planningforgrowth@wcc.govt.nz](mailto:planningforgrowth@wcc.govt.nz)

Website: [planningforgrowth.wellington.govt.nz](http://planningforgrowth.wellington.govt.nz)

Base map credits: Eagle Technology, Land Information New Zealand, GEBCO, Community maps contributors

