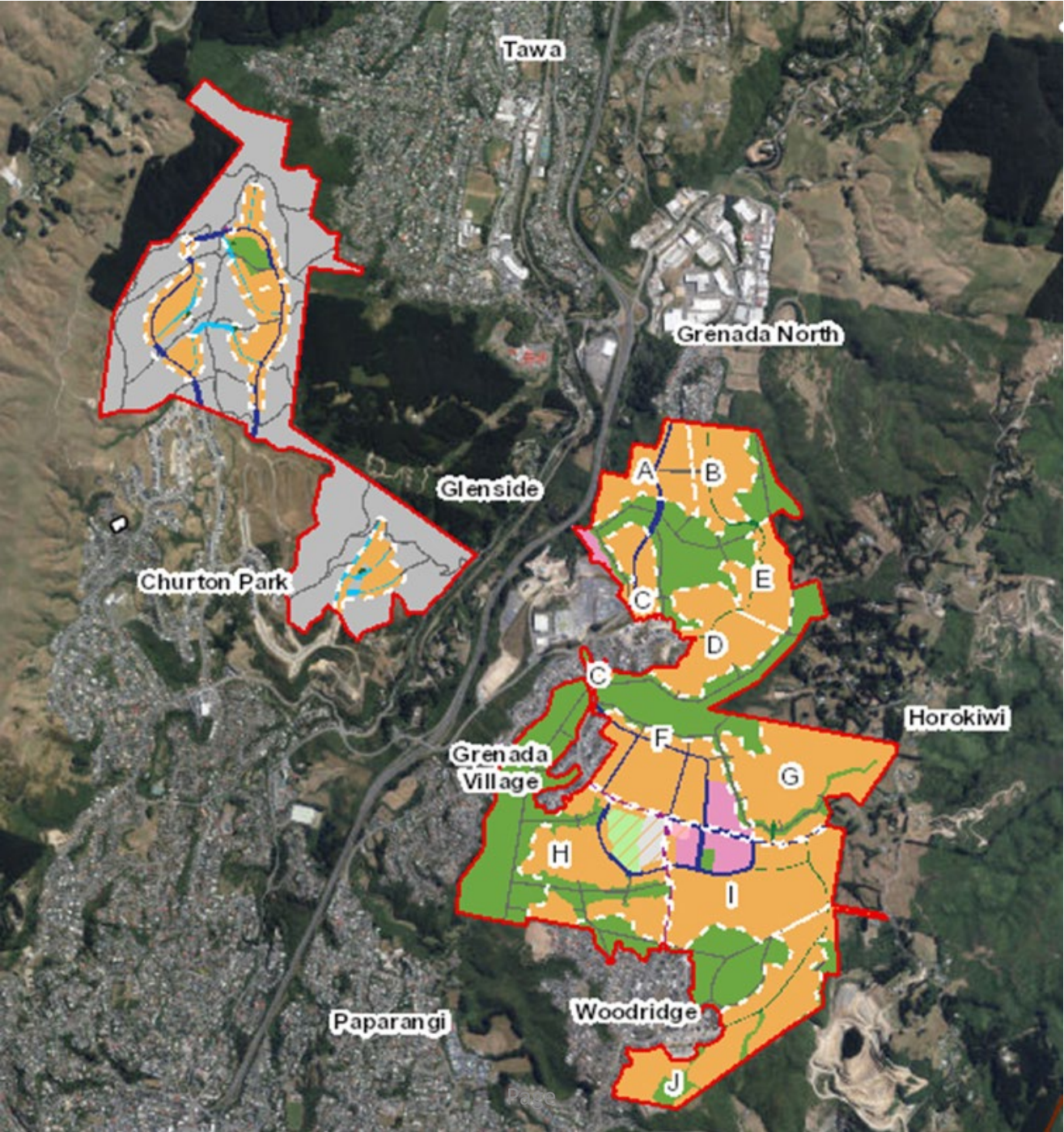


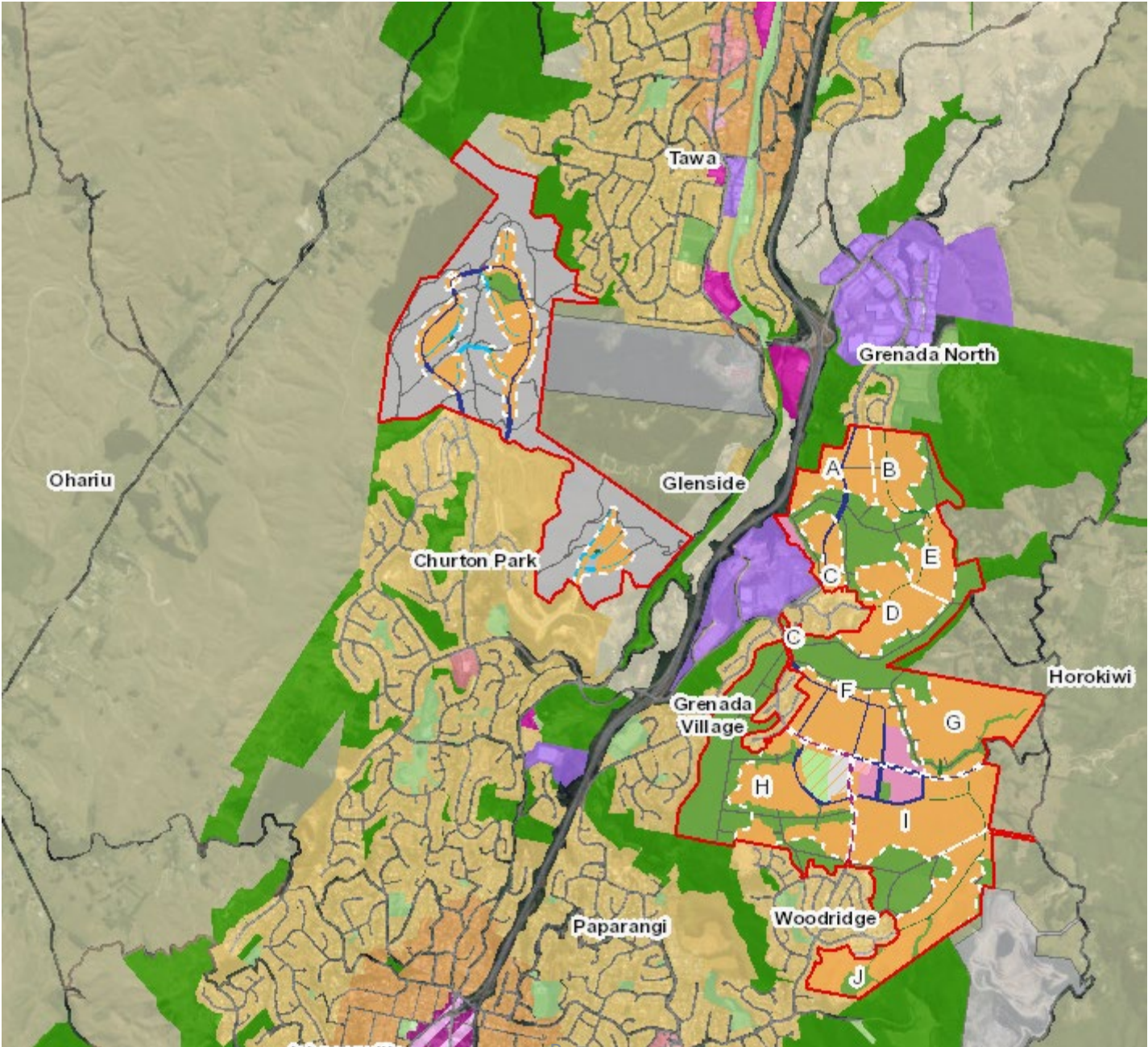
# Relevant chapters and abbreviations:

- **Future Urban Zone (FUZ)** - notified underlying zoning of Development Areas
- **Development Area 2 - Lincolnshire Farm (DEV2)**
  - Appendix 12 (APP12) – Lincolnshire Farm Development Area
    - Figure 8 – APP12: Concept plan of Local Centre
- **Development Area 3 - Upper Stebbings and Glenside West (DEV3)**
  - Appendix 13 (APP13) – Upper Stebbings Glenside West Development Area

Overview of the Future Urban Zone (red outline)



Overview of FUZ with  
Development Areas  
shown in red  
boundary and context  
of surrounding zones



# DEV2 Lincolnshire Farm Farm Development Area

## Lincolnshire Farm

- Development area boundary
- Neighbourhood park catchment
- Potential connection
- Walking track
- Medium density residential
- Clean fill
- Collector road
- Community sports and active recreation
- General industrial
- Key local road
- Natural open space
- Neighbourhood centre
- Neighbourhood park
- Principal road
- School and community hub



# DEV3 Upper Stebbings and Glenside West Development Area

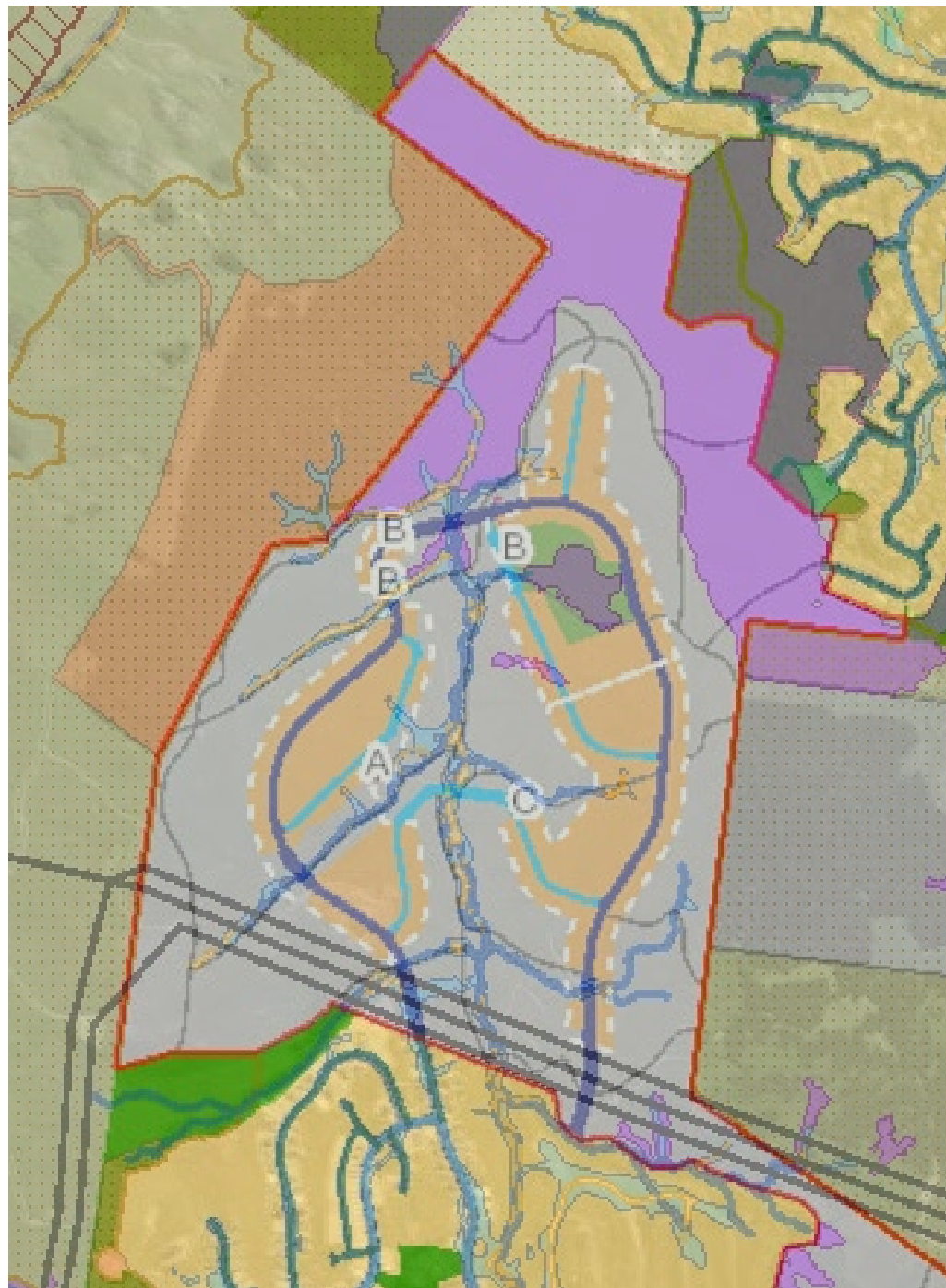
## Upper Stebbings & Glenside West

- Development area boundary
- Neighbourhood park catchment
- Walking track
- Medium density residential
- Bus stop
- Collector road
- Indicative local road
- Natural open space
- Neighbourhood park
- Unbuilt areas (open space, cut & fill batters)

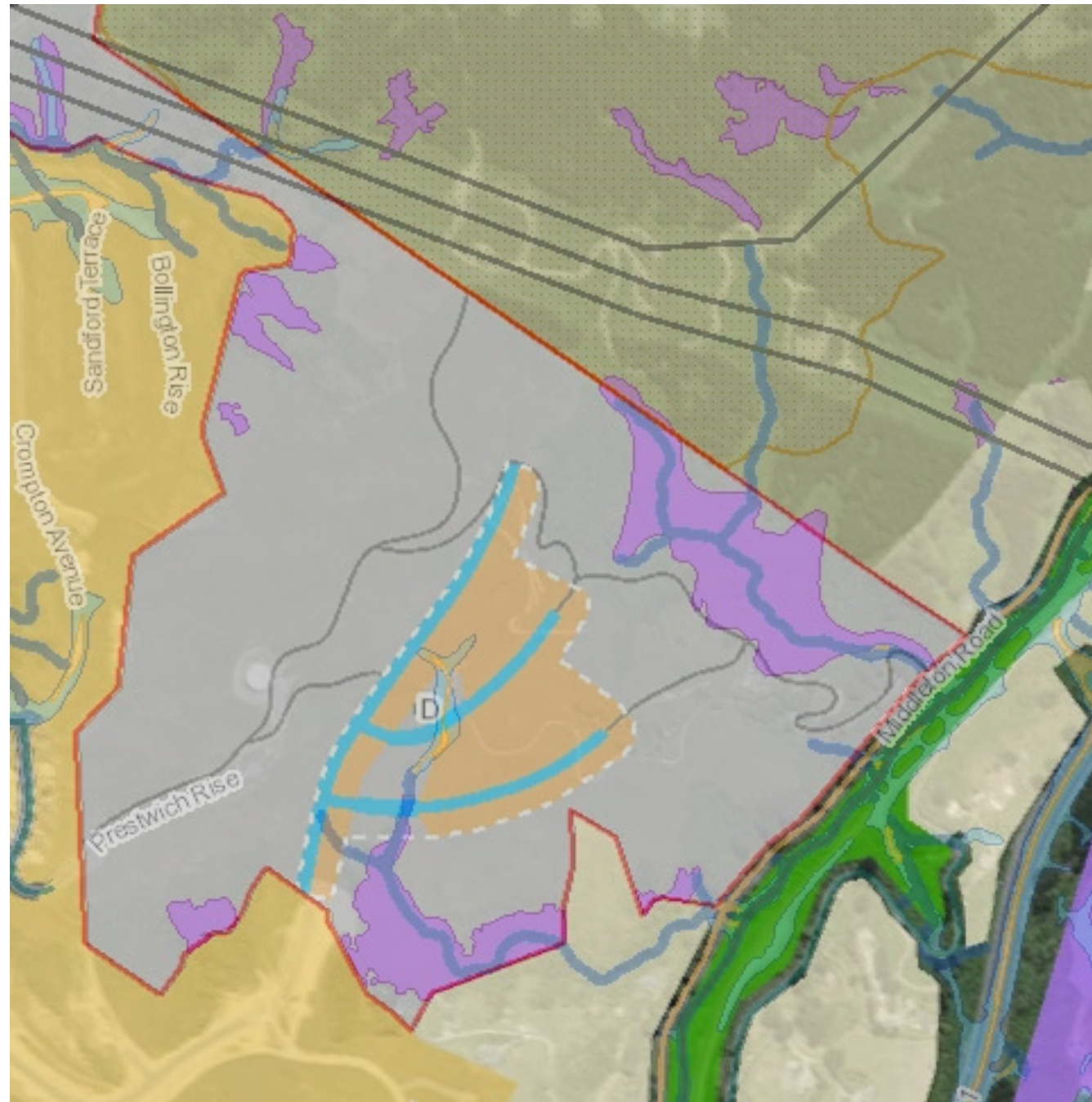


# DEV3 overview

# Upper Stebbings overlays



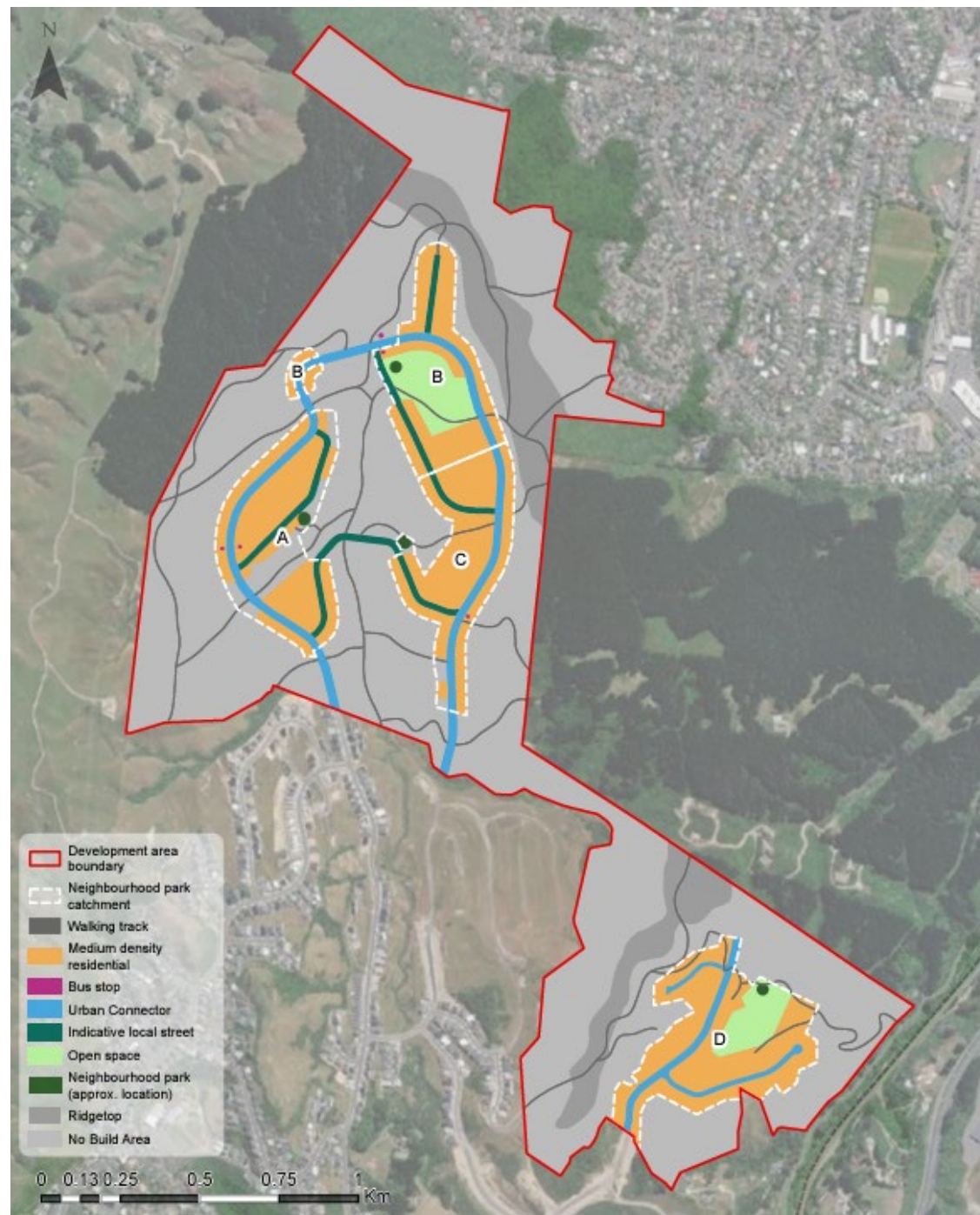
# Glenside West overlays



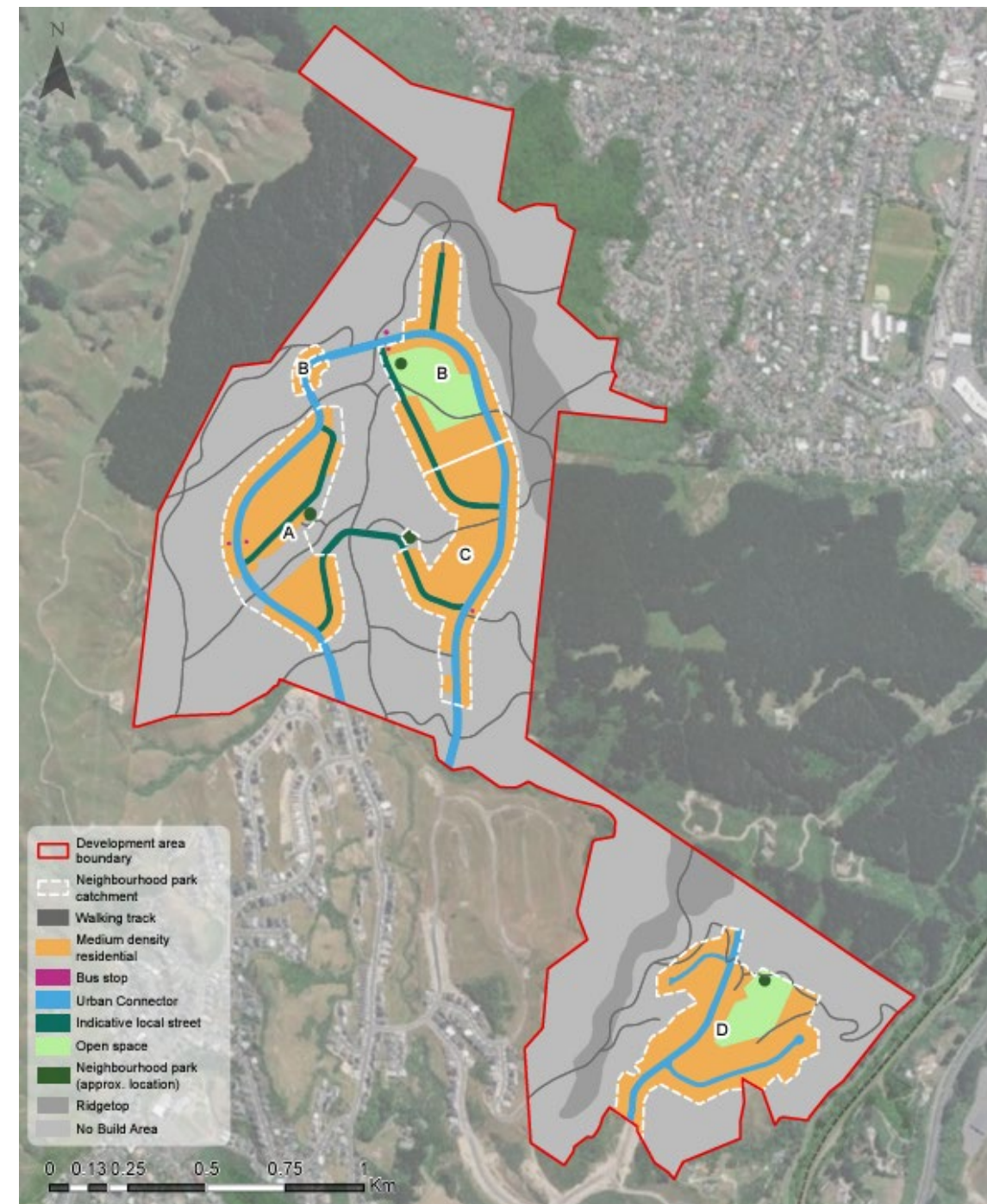
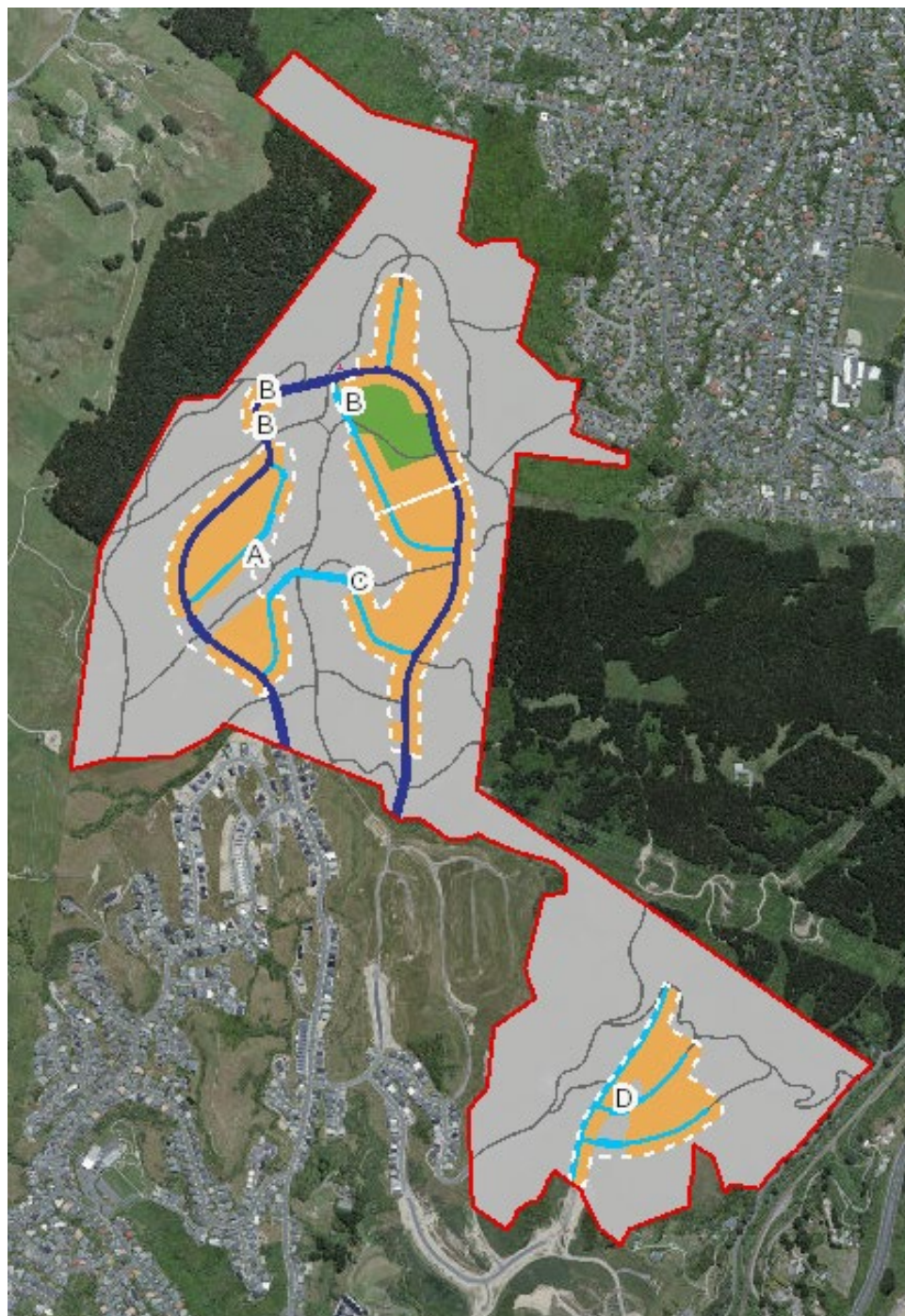


# DEV3 mapping amendments

# Appendix D Recommended amendments to DEV3

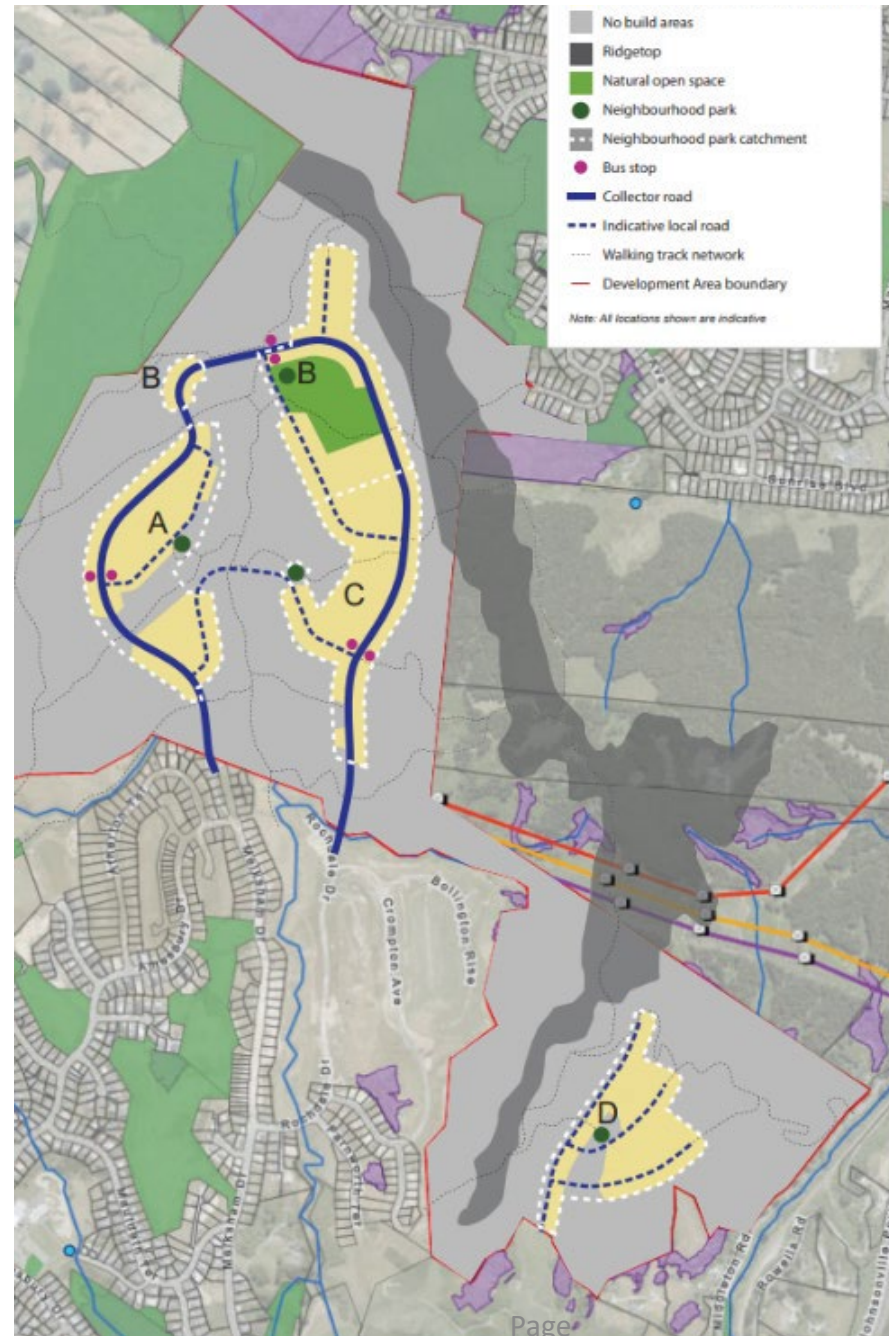


# Additional comparison

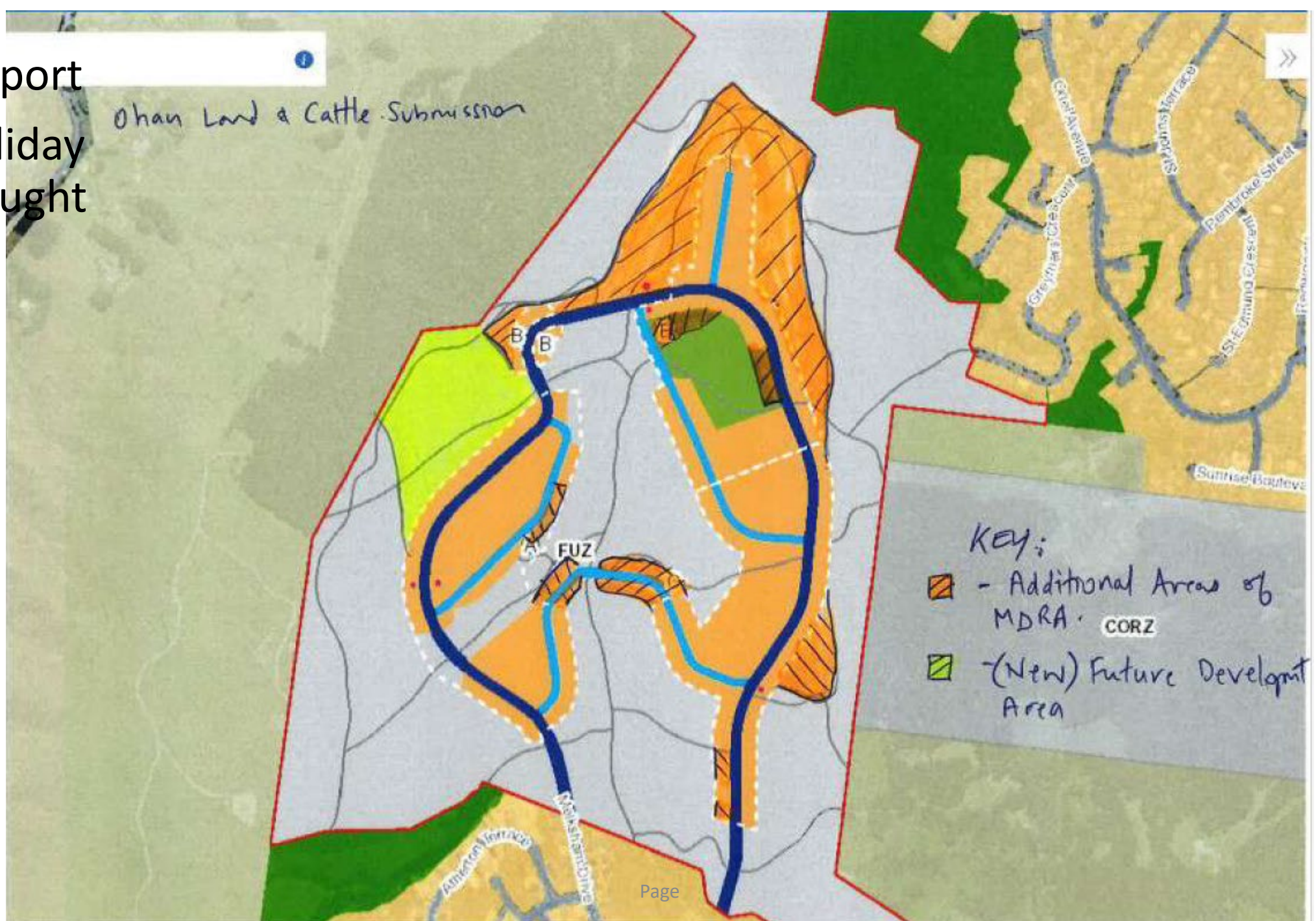


# s42A Report

## WCC relief sought



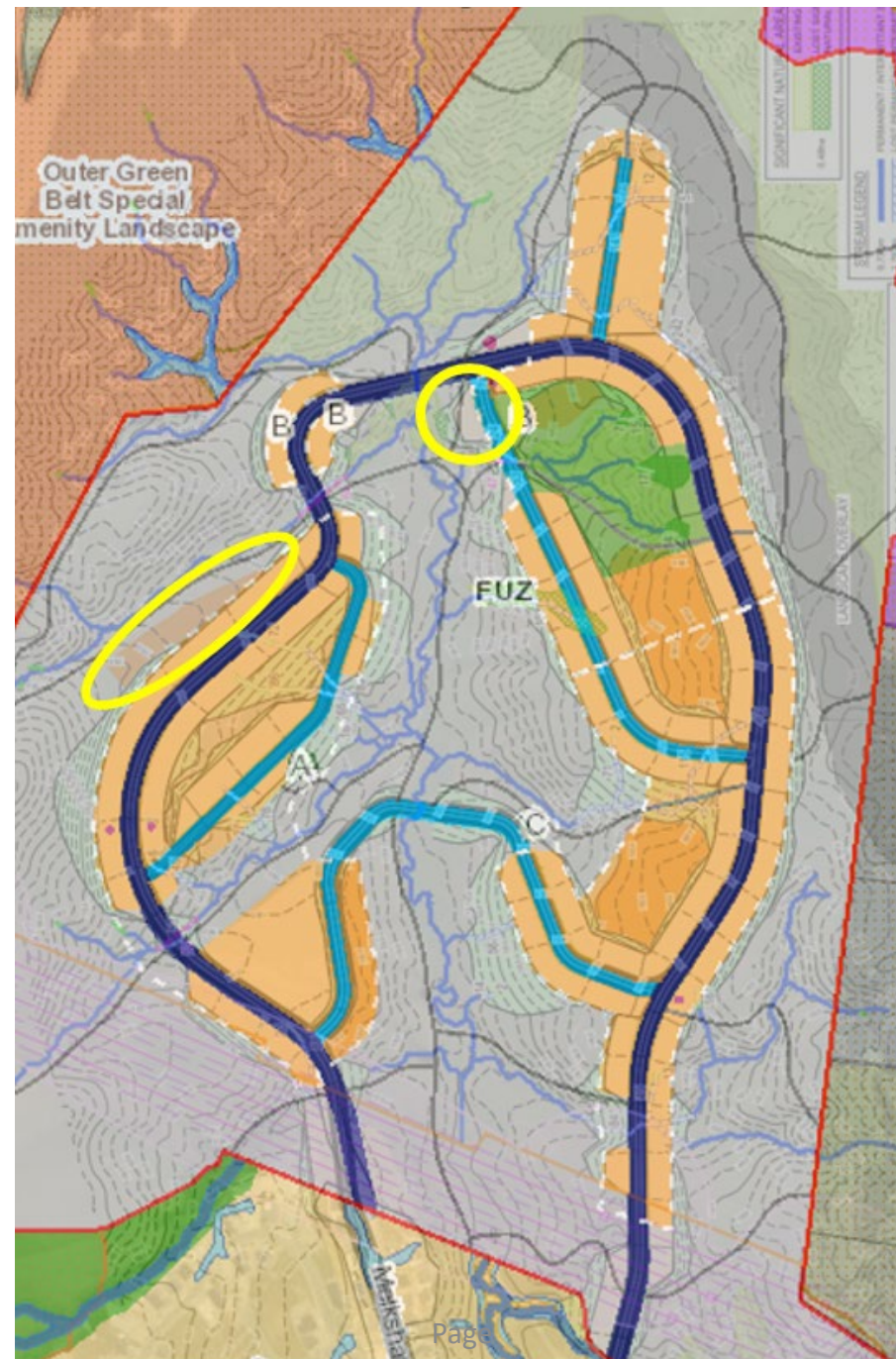
s42A Report  
Rod Halliday  
relief sought



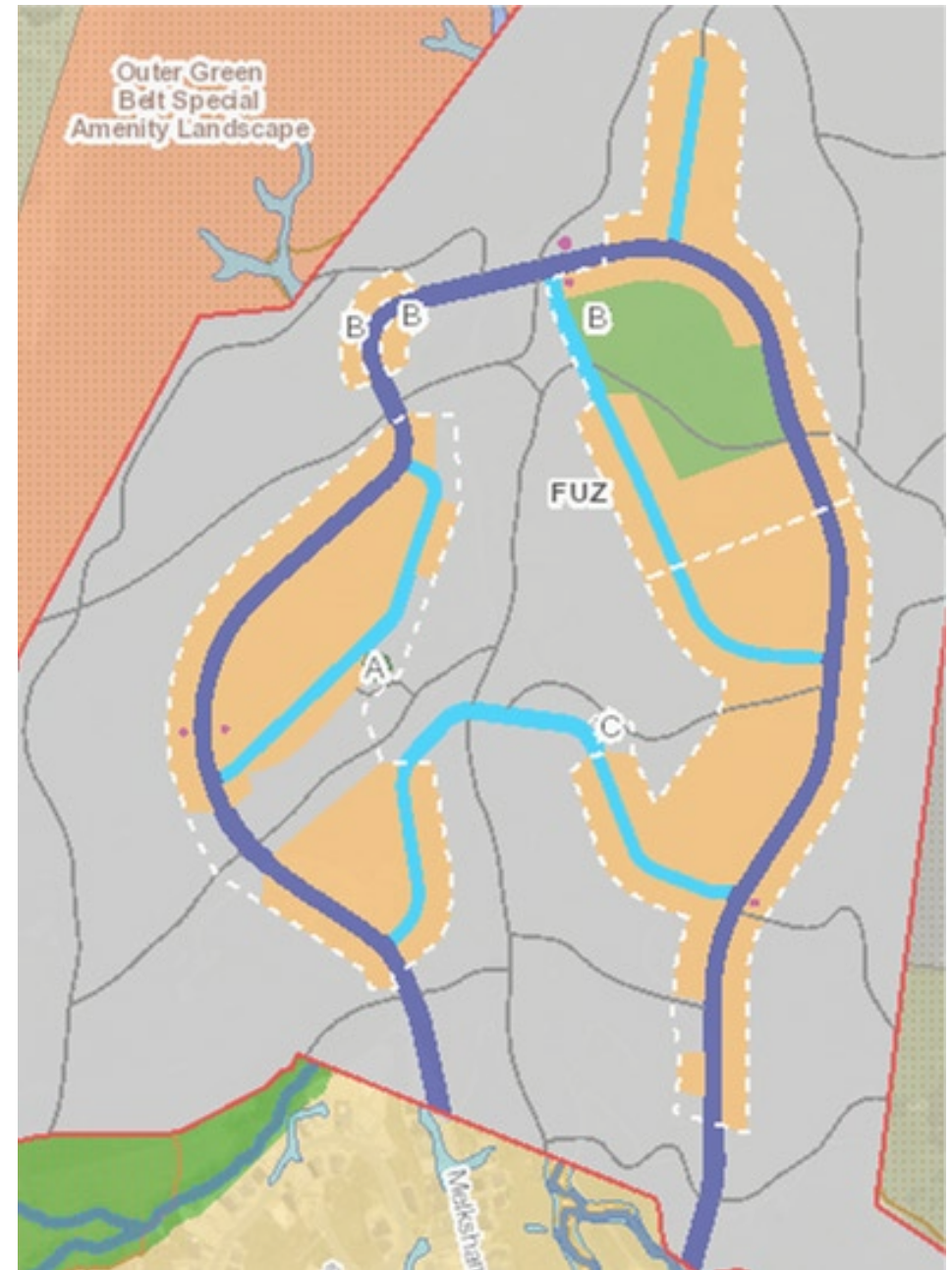
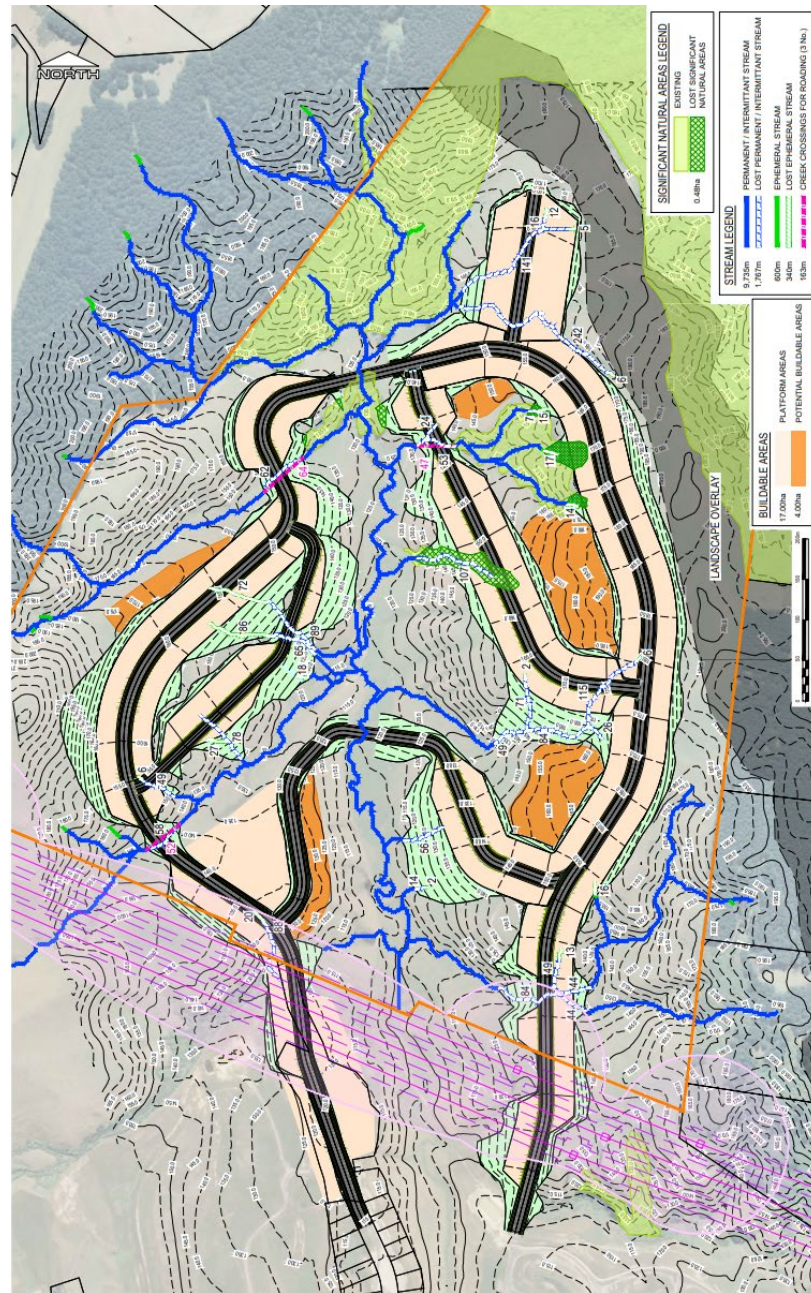
s42A Report  
My response



# Supplementary evidence



# Supplementary evidence

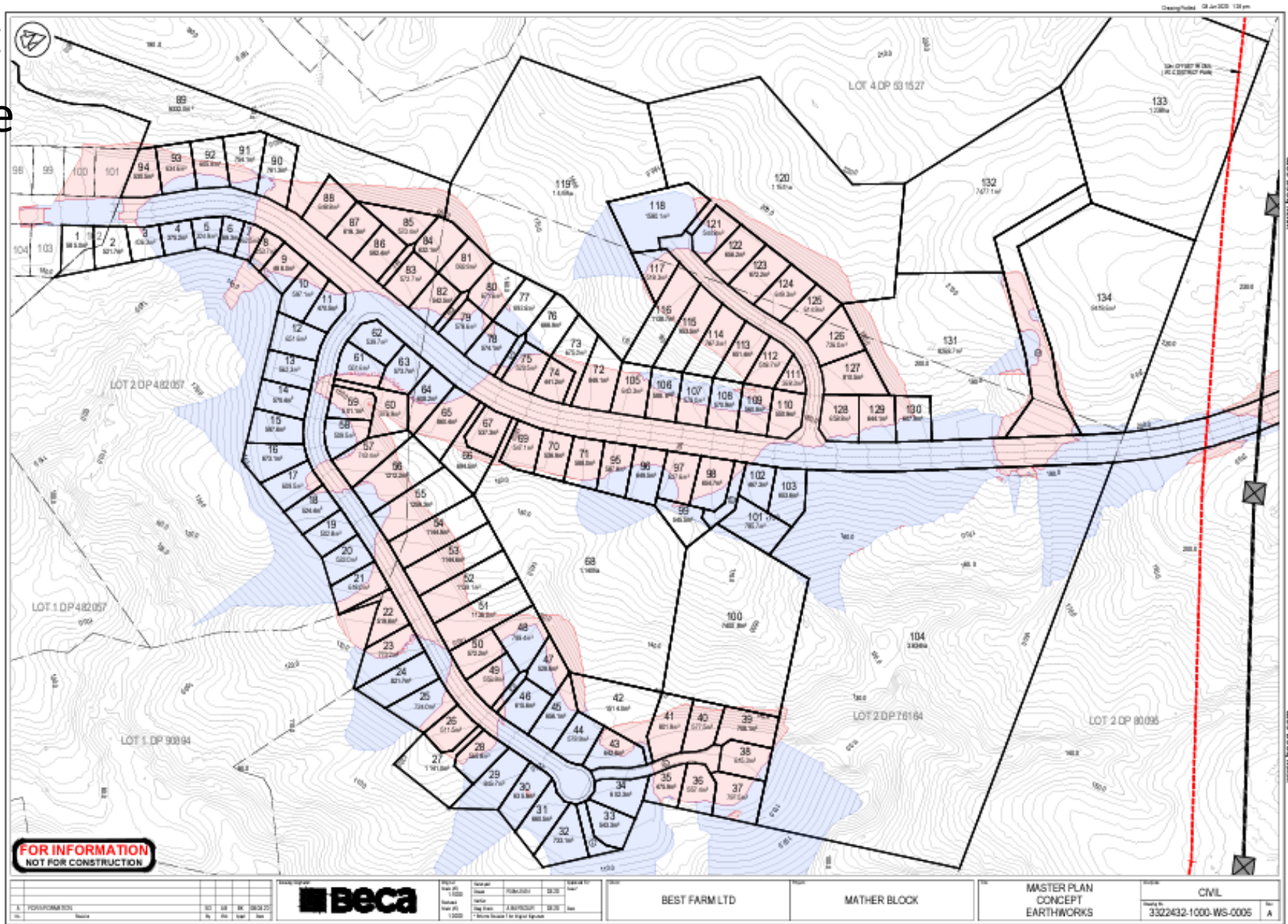




s42A Report  
Rod Halliday  
relief sought



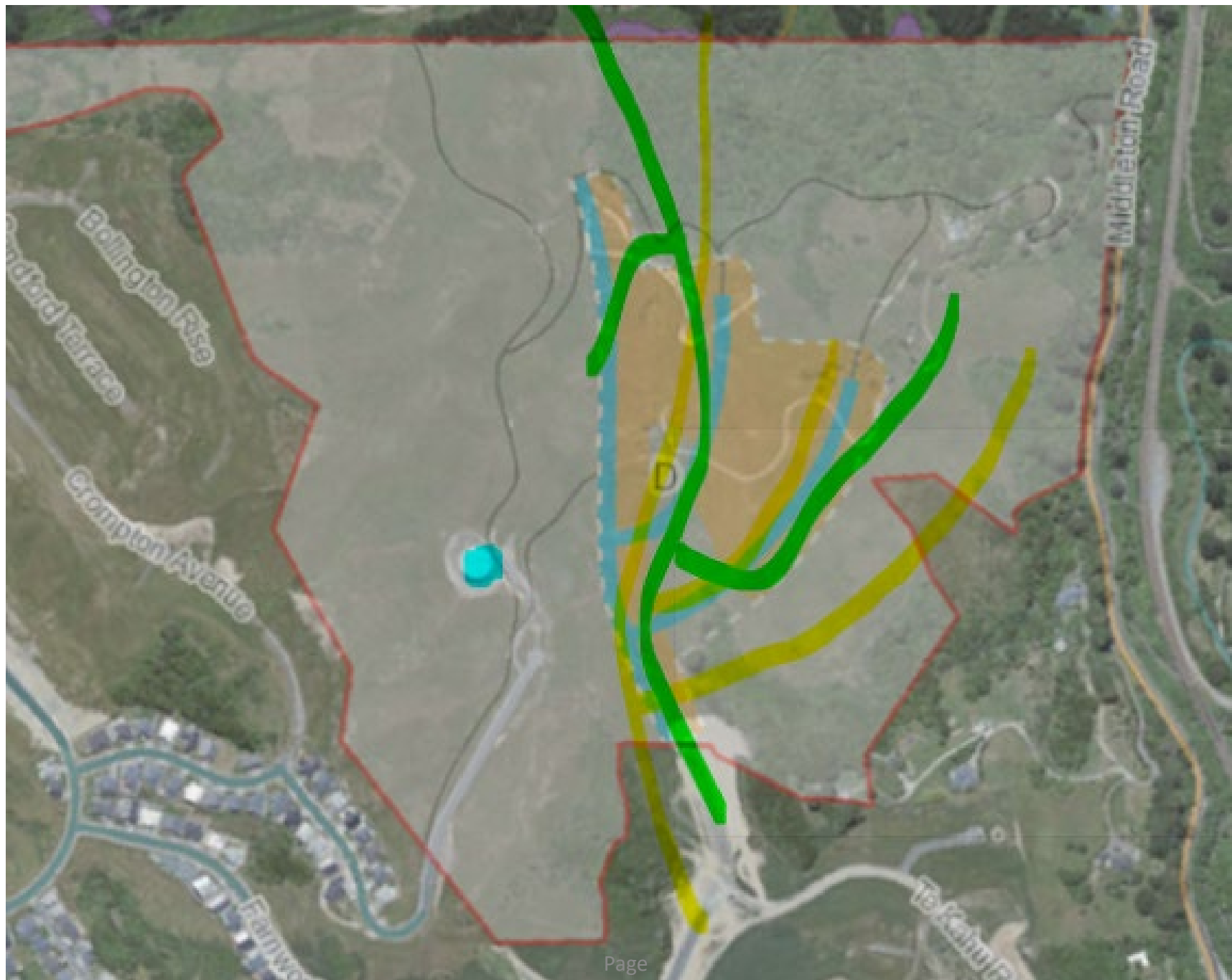
s42A Report  
My response



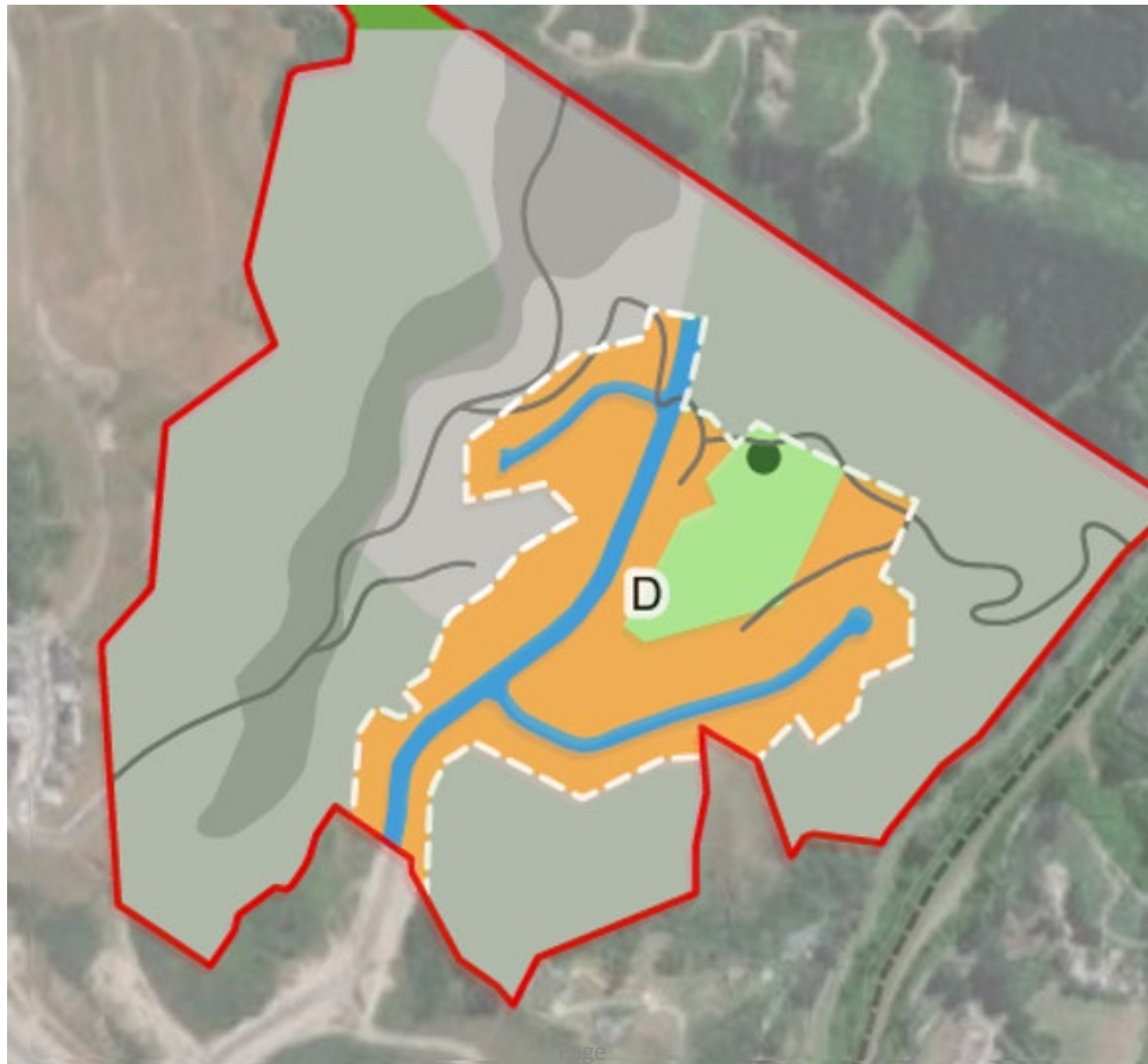
s42A Report  
My response



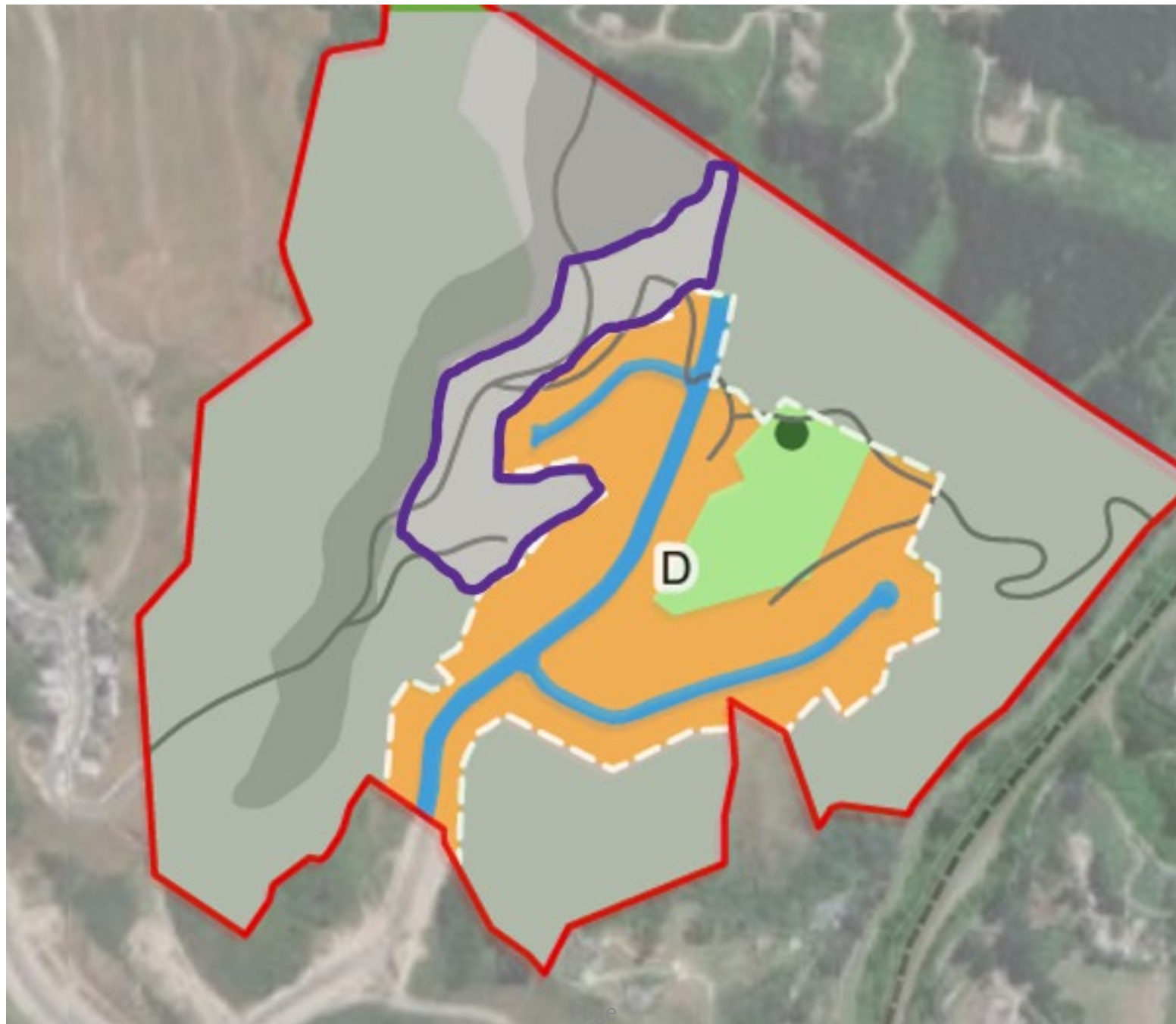
s42A Report  
My response



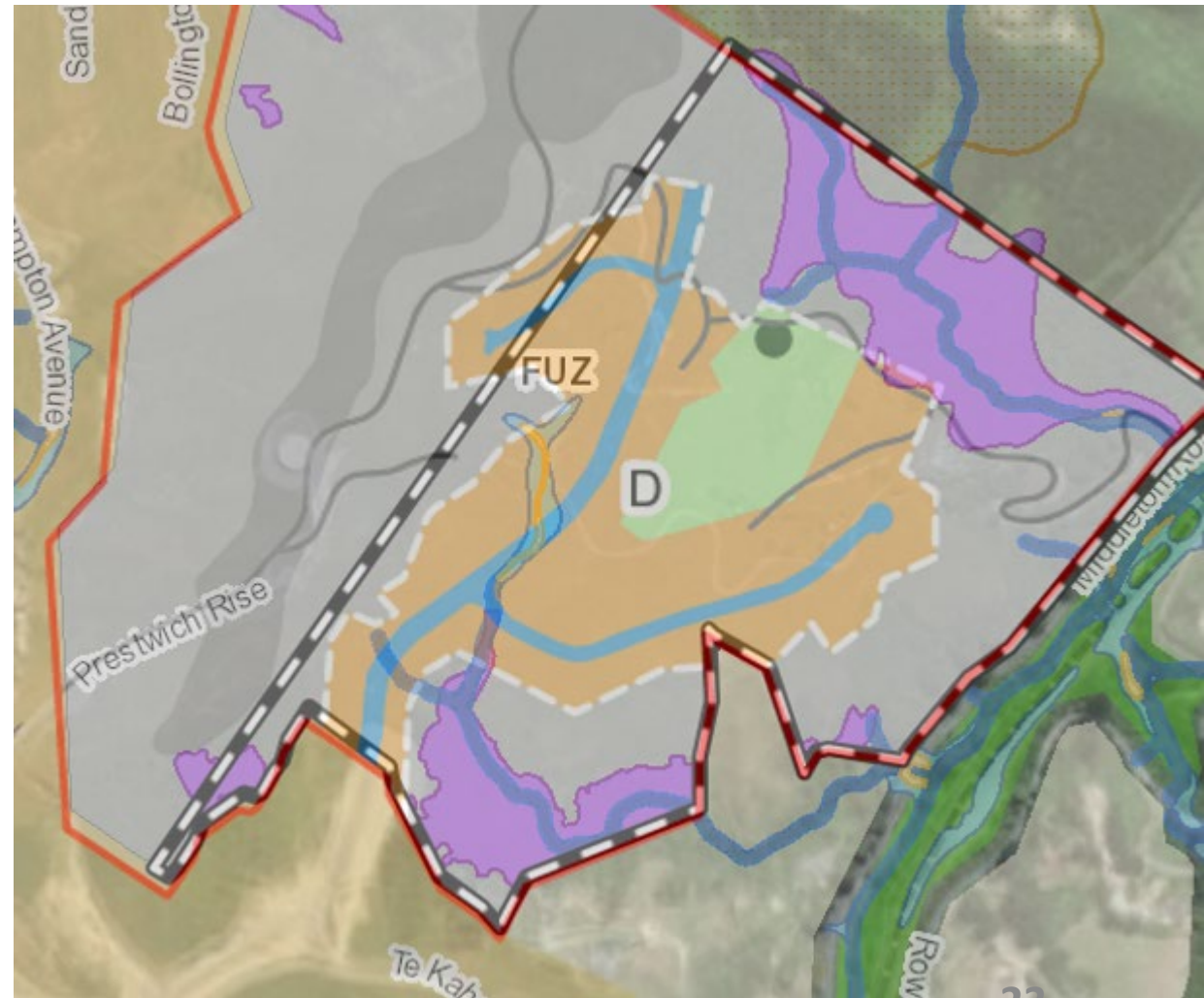
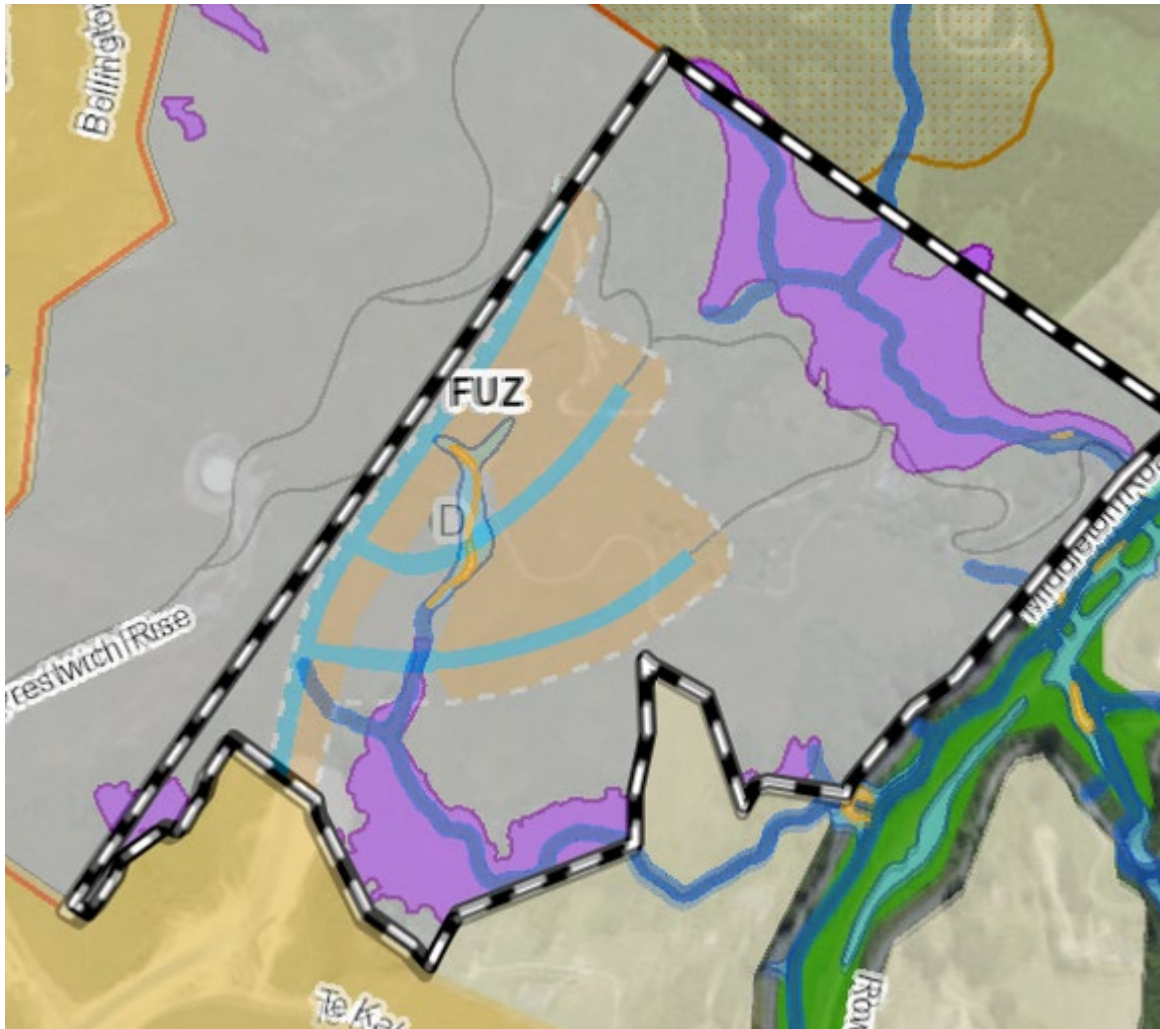
s42A Report  
My response



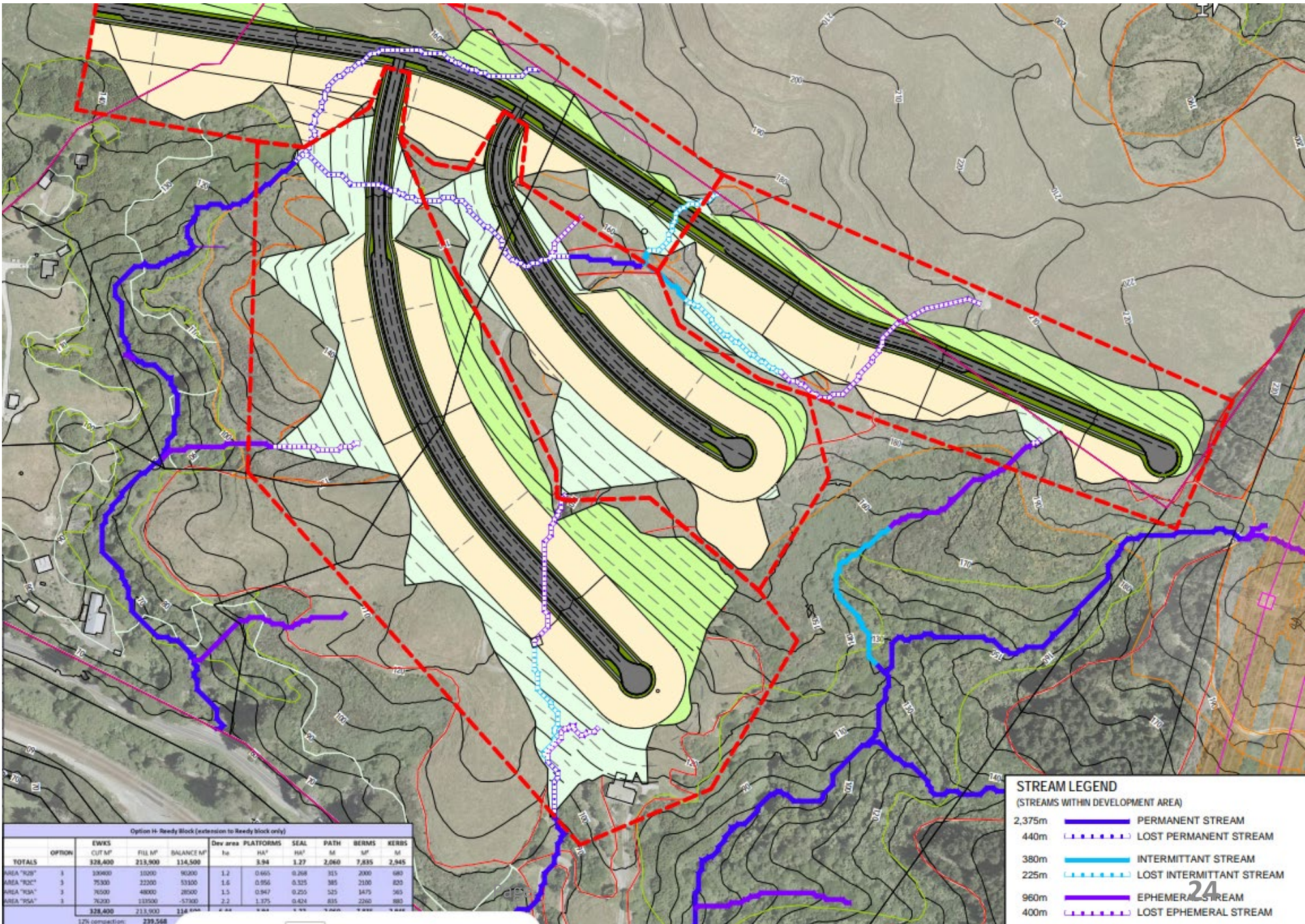
Supplementary  
evidence  
response



# Additional comparison



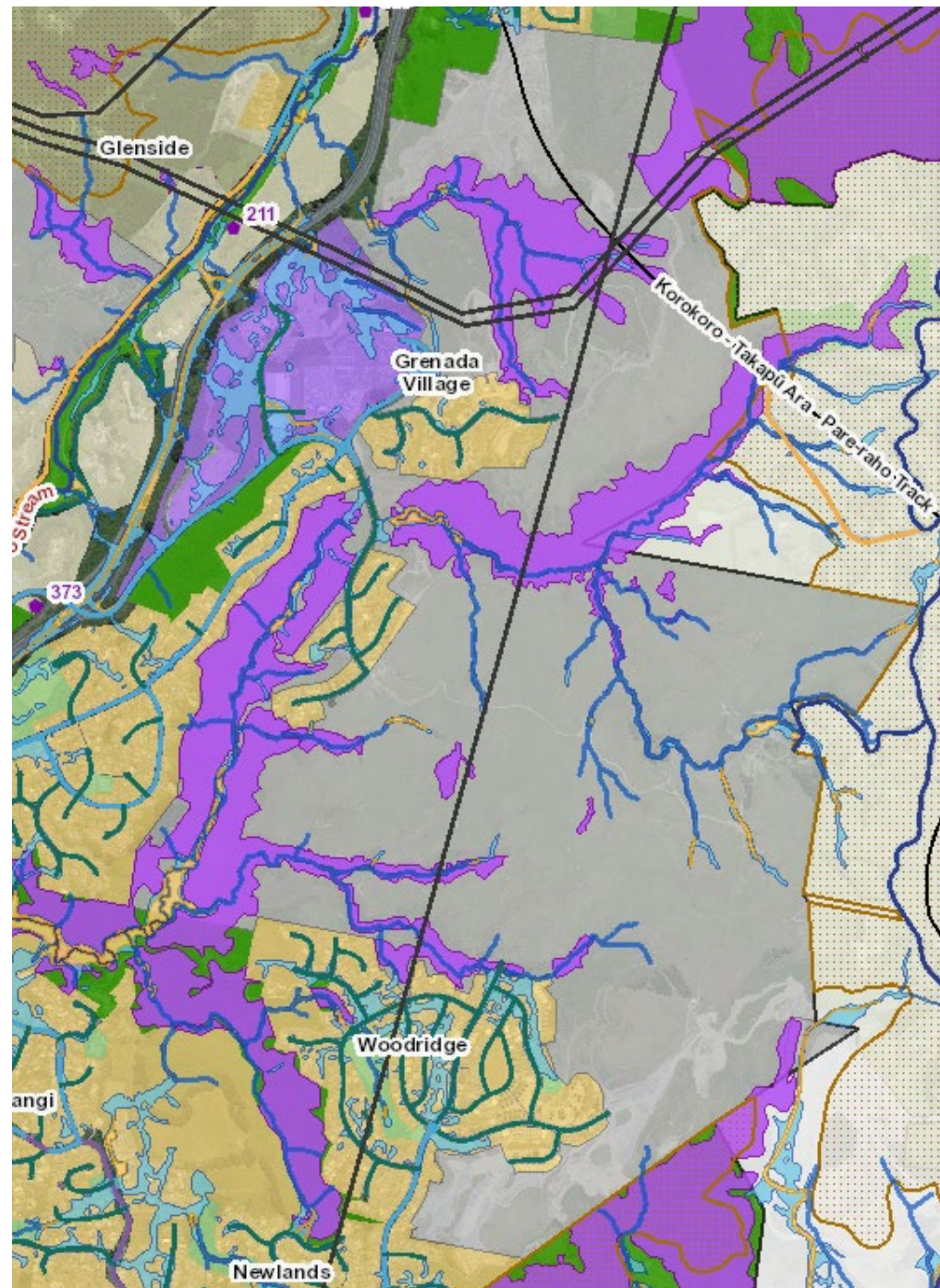
# Background



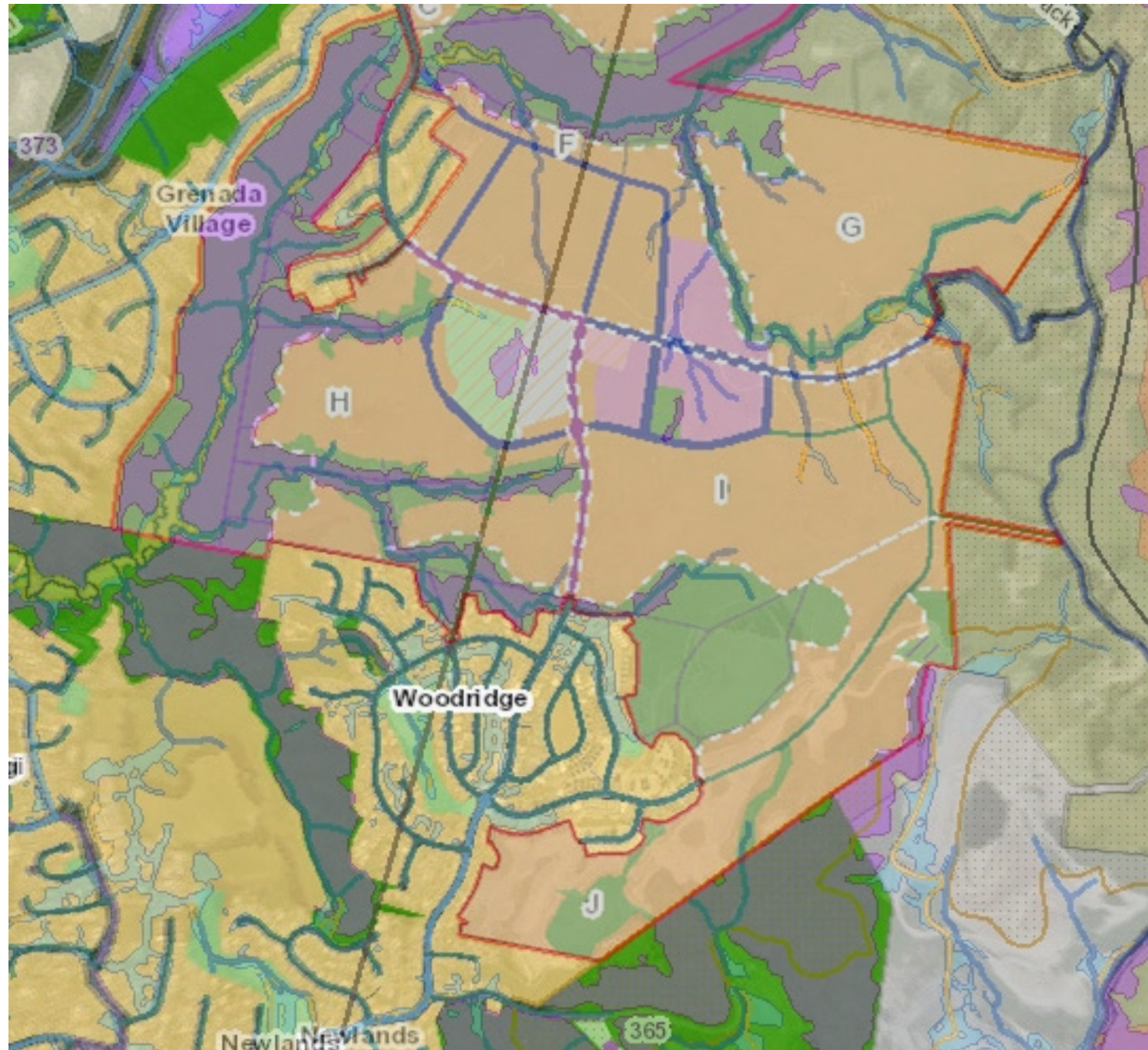


# DEV2 overview

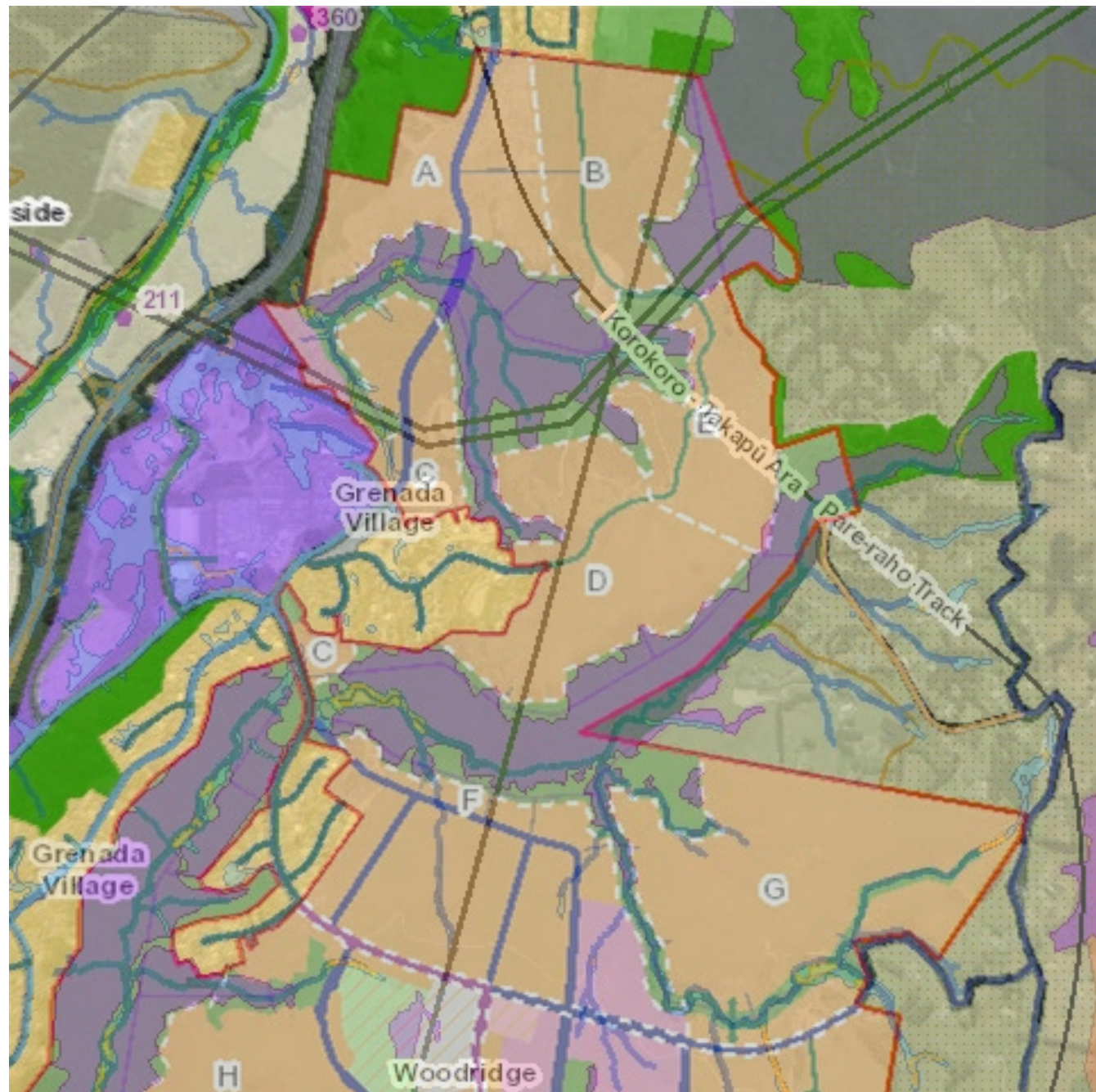
# Lincolnshire Farm overlays



Lincolnshire  
Farm (south)  
Development  
Area with  
overlays

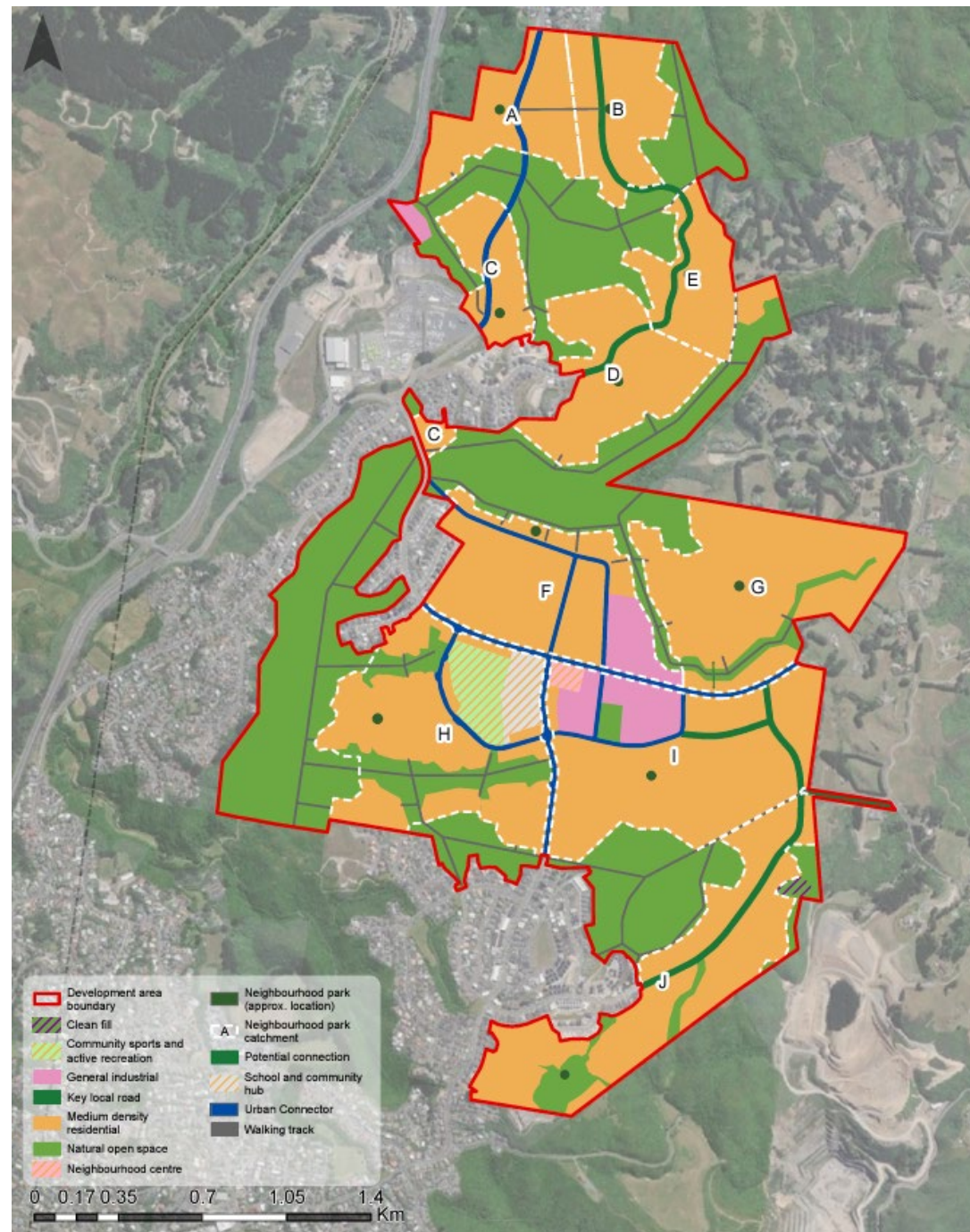


Lincolnshire  
Farm (north)  
Development  
Area with  
overlays

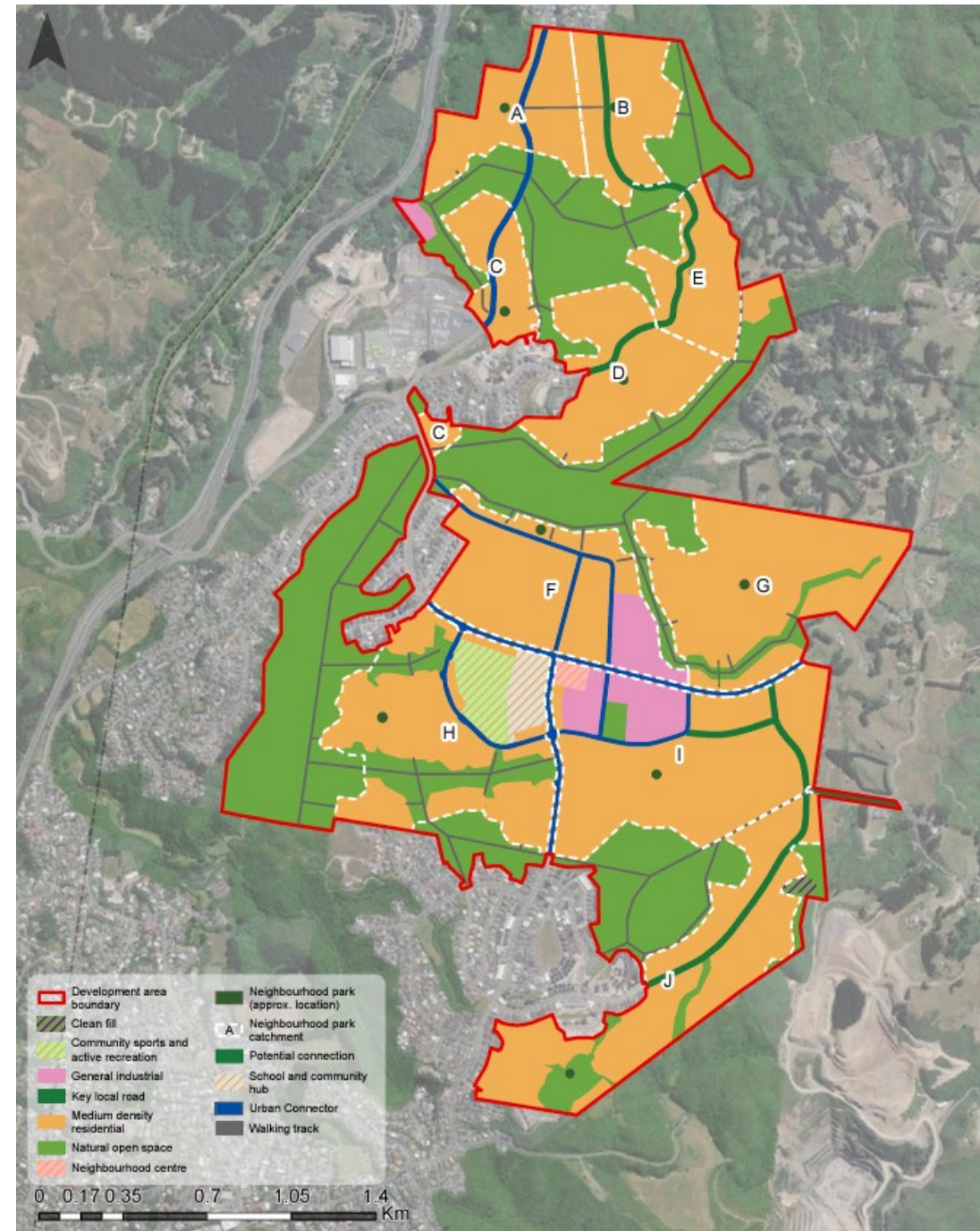
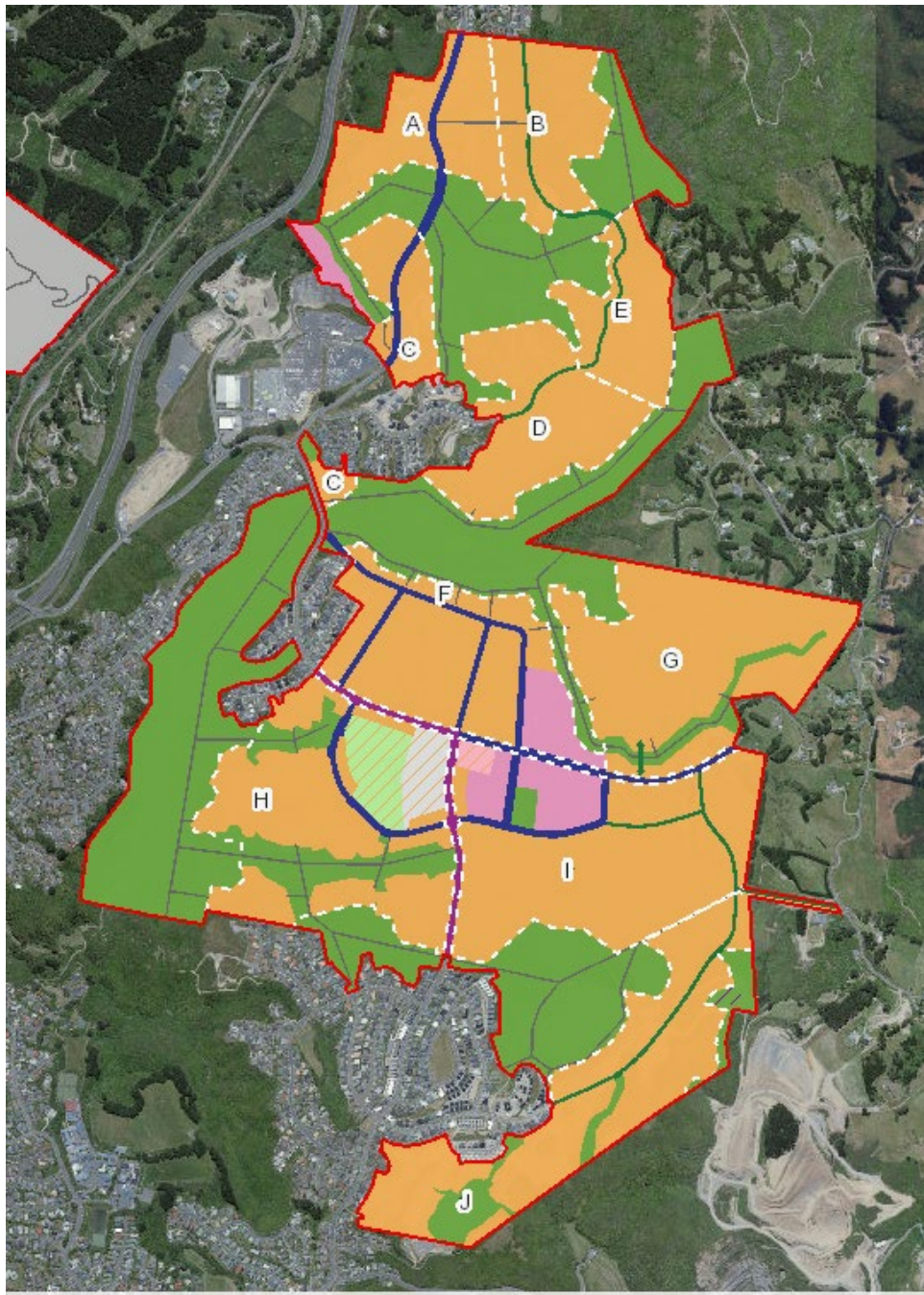


# DEV2 mapping amendments

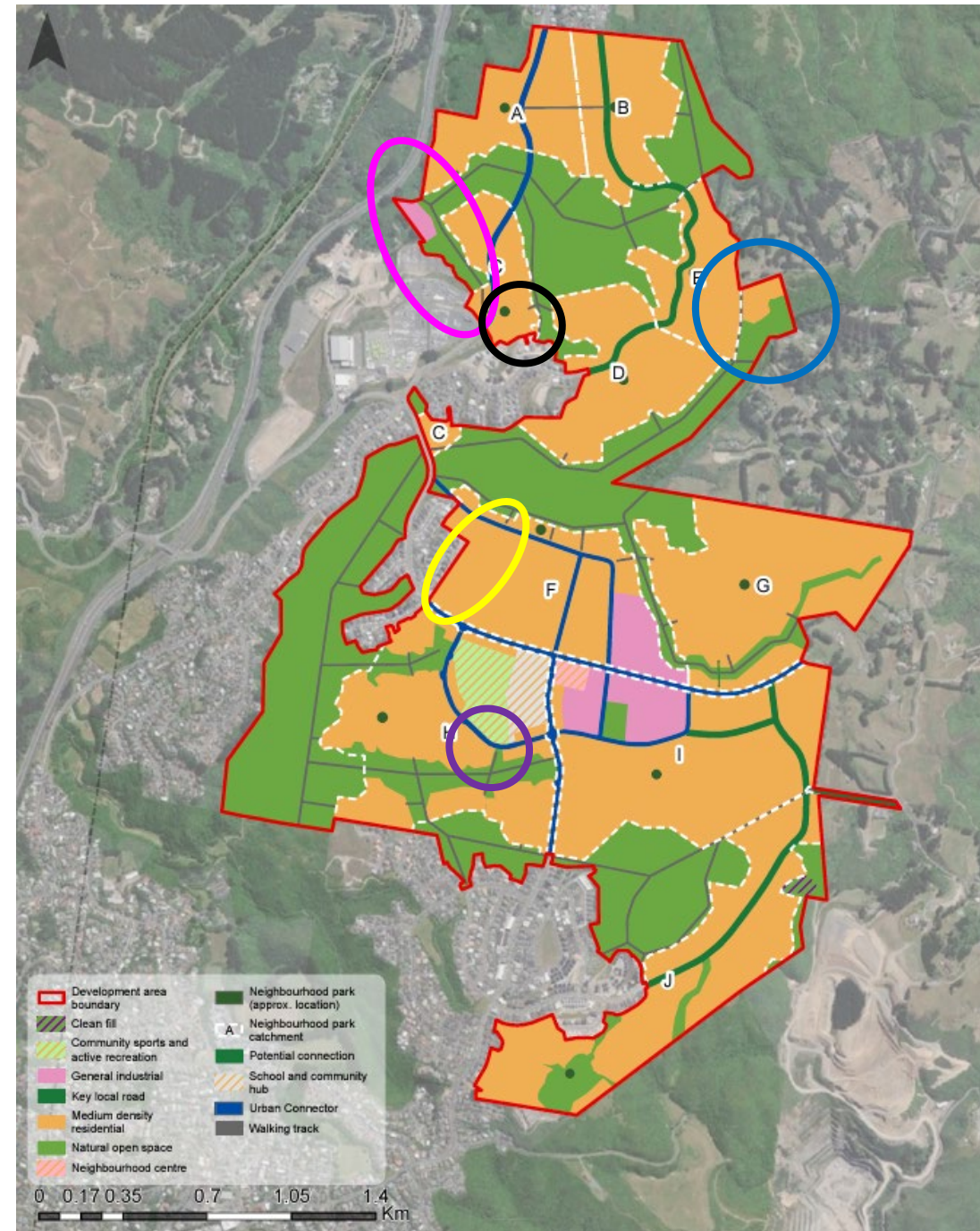
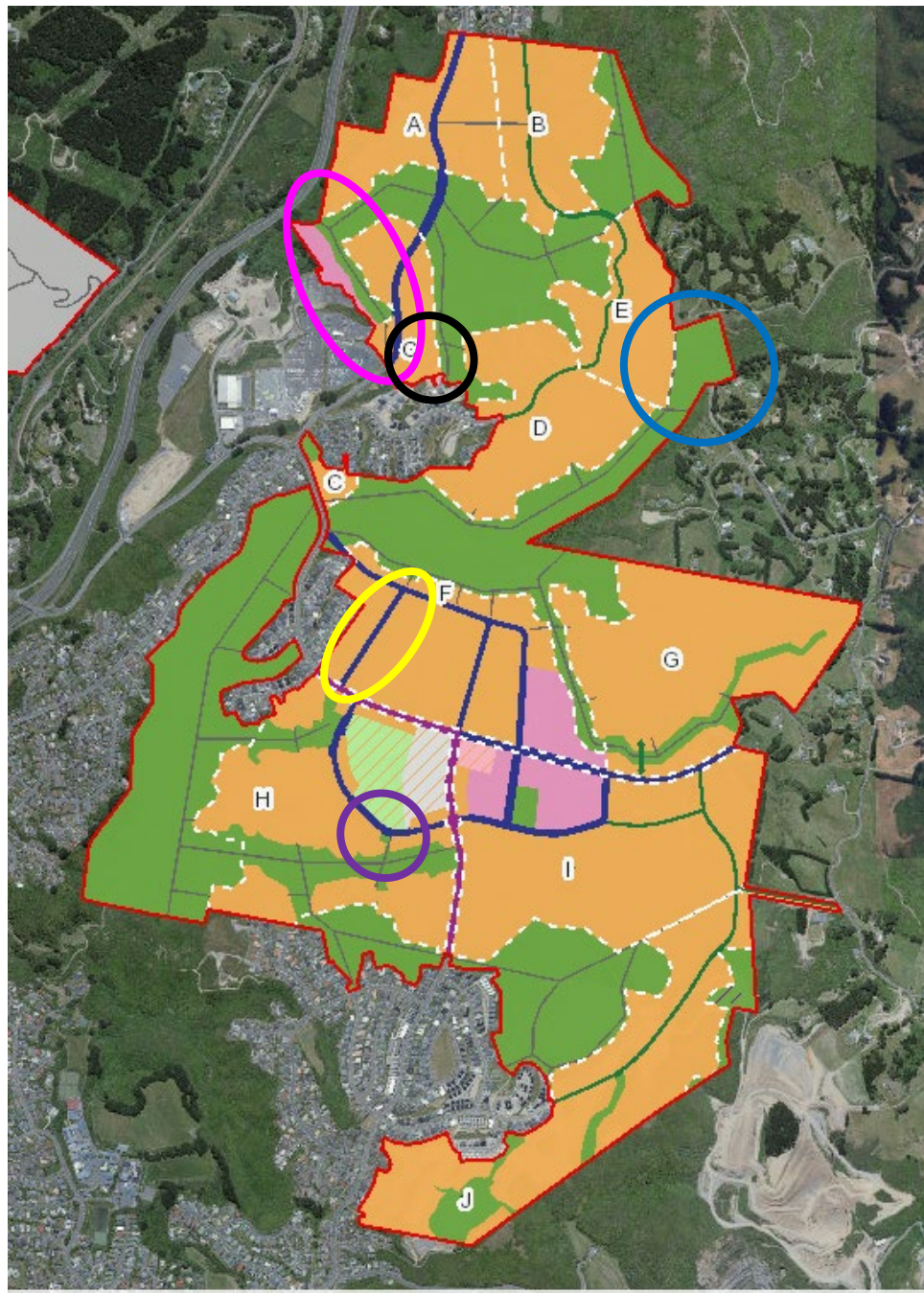
# Appendix D Recommended amendments to DEV2



# Additional comparison

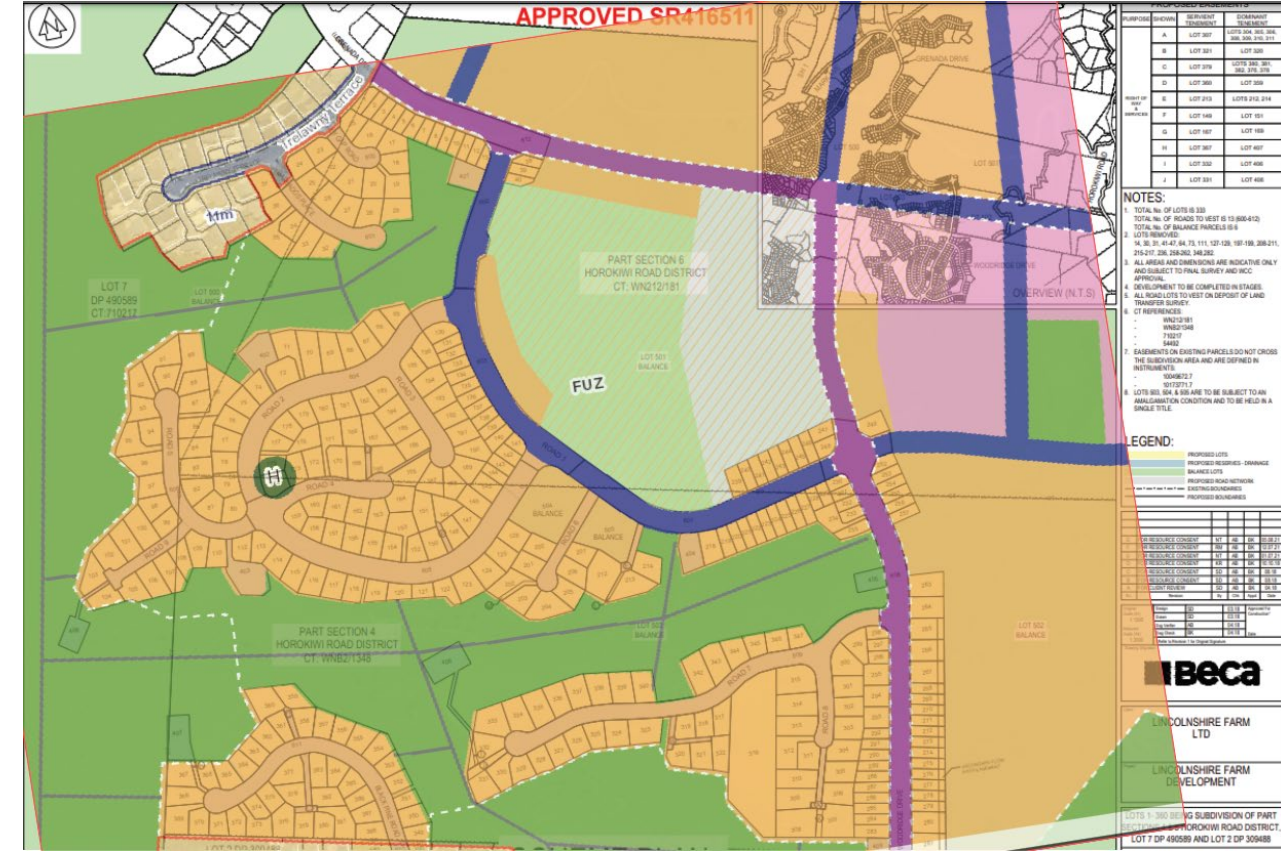
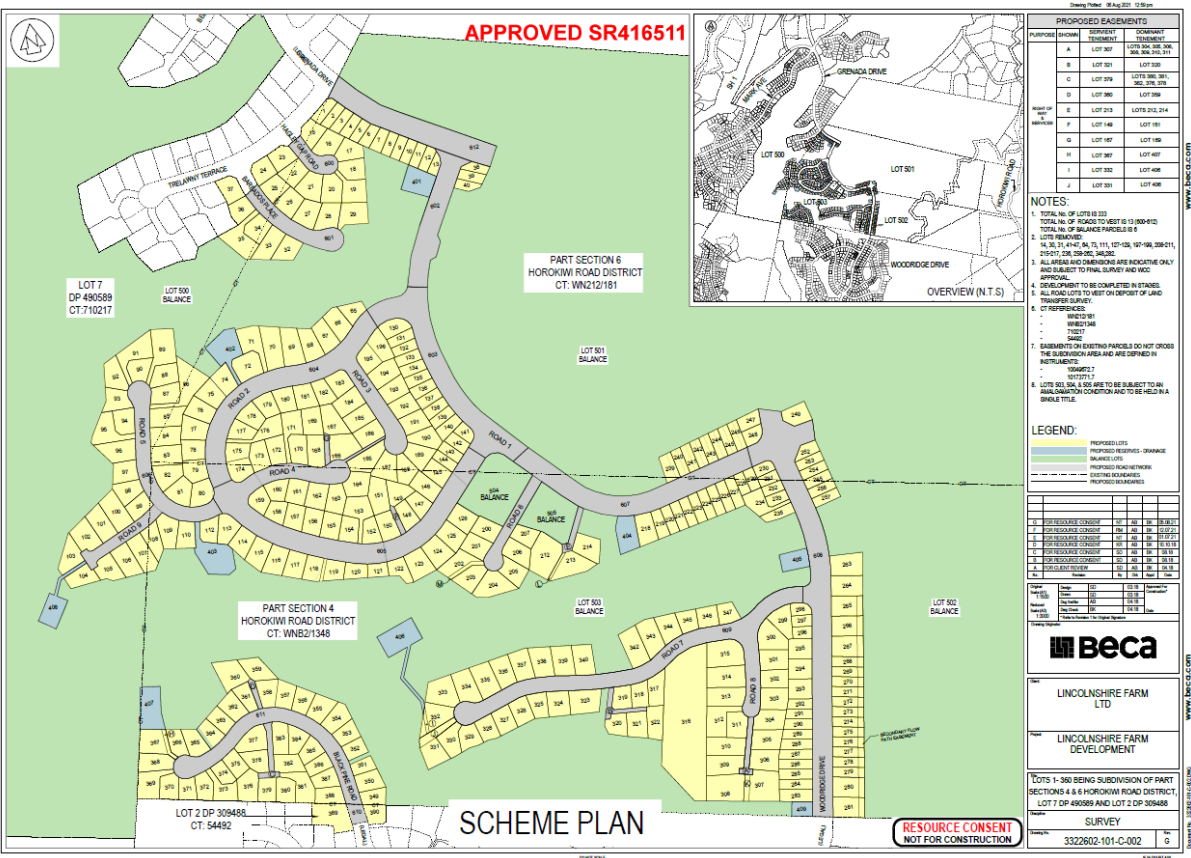


# Additional comparison





# Lincolnshire Farm



Proposed Easements

Particular	Shewen	Beneficiary	Document
A	LOT 307	LOTS 304, 305, 306, 308, 309, 310, 311	
B	LOT 321	LOT 320	
C	LOT 329	LOTS 326, 327, 328, 329, 330	
D	LOT 380	LOT 379	
E	LOT 213	LOTS 212, 214	
F	LOT 146	LOT 145	
G	LOT 147	LOT 148	
H	LOT 302	LOT 301	
I	LOT 322	LOT 323	
J	LOT 323	LOT 324	

NOTES:

- TOTAL NO. OF LOTS IS 330
- TOTAL NO. OF ROADS TO BE SET IS 13 (SR416511)
- TOTAL NO. OF BALANCE PARCELS IS 8
- LOTS REMOVED: 14, 30, 31, 41-43, 44, 73, 111, 127-129, 147-149, 208-211, 214-217, 226, 248-252, 348-252
- ALL AREAS AND DIMENSIONS ARE INDICATIVE ONLY AND SUBJECT TO FINAL SURVEY AND RCC APPROVAL
- DEVELOPMENT TO BE COMPLETED IN PHASES
- ALL ROAD LOTS TO BE SET ON DEPOSIT OF LAND TRANSFER SURVEY
- CT REFERENCES: WINEC148, WINEC149, WINEC150, WINEC151, WINEC152, WINEC153, WINEC154, WINEC155, WINEC156, WINEC157, WINEC158, WINEC159, WINEC160, WINEC161, WINEC162, WINEC163, WINEC164, WINEC165, WINEC166, WINEC167, WINEC168, WINEC169, WINEC170, WINEC171, WINEC172, WINEC173, WINEC174, WINEC175, WINEC176, WINEC177, WINEC178, WINEC179, WINEC180, WINEC181, WINEC182, WINEC183, WINEC184, WINEC185, WINEC186, WINEC187, WINEC188, WINEC189, WINEC190, WINEC191, WINEC192, WINEC193, WINEC194, WINEC195, WINEC196, WINEC197, WINEC198, WINEC199, WINEC200, WINEC201, WINEC202, WINEC203, WINEC204, WINEC205, WINEC206, WINEC207, WINEC208, WINEC209, WINEC210, WINEC211, WINEC212, WINEC213, WINEC214, WINEC215, WINEC216, WINEC217, WINEC218, WINEC219, WINEC220, WINEC221, WINEC222, WINEC223, WINEC224, WINEC225, WINEC226, WINEC227, WINEC228, WINEC229, WINEC230, WINEC231, WINEC232, WINEC233, WINEC234, WINEC235, WINEC236, WINEC237, WINEC238, WINEC239, WINEC240, WINEC241, WINEC242, WINEC243, WINEC244, WINEC245, WINEC246, WINEC247, WINEC248, WINEC249, WINEC250, WINEC251, WINEC252, WINEC253, WINEC254, WINEC255, WINEC256, WINEC257, WINEC258, WINEC259, WINEC260, WINEC261, WINEC262, WINEC263, WINEC264, WINEC265, WINEC266, WINEC267, WINEC268, WINEC269, WINEC270, WINEC271, WINEC272, WINEC273, WINEC274, WINEC275, WINEC276, WINEC277, WINEC278, WINEC279, WINEC280, WINEC281, WINEC282, WINEC283, WINEC284, WINEC285, WINEC286, WINEC287, WINEC288, WINEC289, WINEC290, WINEC291, WINEC292, WINEC293, WINEC294, WINEC295, WINEC296, WINEC297, WINEC298, WINEC299, WINEC300, WINEC301, WINEC302, WINEC303, WINEC304, WINEC305, WINEC306, WINEC307, WINEC308, WINEC309, WINEC310, WINEC311, WINEC312, WINEC313, WINEC314, WINEC315, WINEC316, WINEC317, WINEC318, WINEC319, WINEC320, WINEC321, WINEC322, WINEC323, WINEC324, WINEC325, WINEC326, WINEC327, WINEC328, WINEC329, WINEC330
- LOT 301, 304 & 305 ARE TO BE SUBJECT TO AN AMALGAMATION CONDITION AND TO BE HELD IN A SINGLE TITLE

LEGEND:

- PROPOSED LOTS
- PROPOSED RESERVES - DRAINAGE
- PROPOSED RESERVES - OPEN SPACE
- PROPOSED ROAD NETWORK
- EXISTING ROADS
- PROPOSED BOUNDARIES

**Beca**

**LINCOLNSHIRE FARM LTD**

**LINCOLNSHIRE FARM DEVELOPMENT**

LOTS 1-300 BEING SUBDIVISION OF PART SECTIONS 4 & 6 HOROKIWI ROAD DISTRICT, LOT 7 DP 490589 AND LOT 2 DP 305488

DATE: 10/07/21

PROJECT: SURVEY

3322602-101-C-002

Proposed Easements

Particular	Shewen	Beneficiary	Document
A	LOT 307	LOTS 304, 305, 306, 308, 309, 310, 311	
B	LOT 321	LOT 320	
C	LOT 329	LOTS 326, 327, 328, 329, 330	
D	LOT 380	LOT 379	
E	LOT 213	LOTS 212, 214	
F	LOT 146	LOT 145	
G	LOT 147	LOT 148	
H	LOT 302	LOT 301	
I	LOT 322	LOT 323	
J	LOT 323	LOT 324	

NOTES:

- TOTAL NO. OF LOTS IS 330
- TOTAL NO. OF ROADS TO BE SET IS 13 (SR416511)
- TOTAL NO. OF BALANCE PARCELS IS 8
- LOTS REMOVED: 14, 30, 31, 41-43, 44, 73, 111, 127-129, 147-149, 208-211, 214-217, 226, 248-252, 348-252
- ALL AREAS AND DIMENSIONS ARE INDICATIVE ONLY AND SUBJECT TO FINAL SURVEY AND RCC APPROVAL
- DEVELOPMENT TO BE COMPLETED IN PHASES
- ALL ROAD LOTS TO BE SET ON DEPOSIT OF LAND TRANSFER SURVEY
- CT REFERENCES: WINEC148, WINEC149, WINEC150, WINEC151, WINEC152, WINEC153, WINEC154, WINEC155, WINEC156, WINEC157, WINEC158, WINEC159, WINEC160, WINEC161, WINEC162, WINEC163, WINEC164, WINEC165, WINEC166, WINEC167, WINEC168, WINEC169, WINEC170, WINEC171, WINEC172, WINEC173, WINEC174, WINEC175, WINEC176, WINEC177, WINEC178, WINEC179, WINEC180, WINEC181, WINEC182, WINEC183, WINEC184, WINEC185, WINEC186, WINEC187, WINEC188, WINEC189, WINEC190, WINEC191, WINEC192, WINEC193, WINEC194, WINEC195, WINEC196, WINEC197, WINEC198, WINEC199, WINEC200, WINEC201, WINEC202, WINEC203, WINEC204, WINEC205, WINEC206, WINEC207, WINEC208, WINEC209, WINEC210, WINEC211, WINEC212, WINEC213, WINEC214, WINEC215, WINEC216, WINEC217, WINEC218, WINEC219, WINEC220, WINEC221, WINEC222, WINEC223, WINEC224, WINEC225, WINEC226, WINEC227, WINEC228, WINEC229, WINEC230, WINEC231, WINEC232, WINEC233, WINEC234, WINEC235, WINEC236, WINEC237, WINEC238, WINEC239, WINEC240, WINEC241, WINEC242, WINEC243, WINEC244, WINEC245, WINEC246, WINEC247, WINEC248, WINEC249, WINEC250, WINEC251, WINEC252, WINEC253, WINEC254, WINEC255, WINEC256, WINEC257, WINEC258, WINEC259, WINEC260, WINEC261, WINEC262, WINEC263, WINEC264, WINEC265, WINEC266, WINEC267, WINEC268, WINEC269, WINEC270, WINEC271, WINEC272, WINEC273, WINEC274, WINEC275, WINEC276, WINEC277, WINEC278, WINEC279, WINEC280, WINEC281, WINEC282, WINEC283, WINEC284, WINEC285, WINEC286, WINEC287, WINEC288, WINEC289, WINEC290, WINEC291, WINEC292, WINEC293, WINEC294, WINEC295, WINEC296, WINEC297, WINEC298, WINEC299, WINEC300, WINEC301, WINEC302, WINEC303, WINEC304, WINEC305, WINEC306, WINEC307, WINEC308, WINEC309, WINEC310, WINEC311, WINEC312, WINEC313, WINEC314, WINEC315, WINEC316, WINEC317, WINEC318, WINEC319, WINEC320, WINEC321, WINEC322, WINEC323, WINEC324, WINEC325, WINEC326, WINEC327, WINEC328, WINEC329, WINEC330
- LOT 301, 304 & 305 ARE TO BE SUBJECT TO AN AMALGAMATION CONDITION AND TO BE HELD IN A SINGLE TITLE

LEGEND:

- PROPOSED LOTS
- PROPOSED RESERVES - DRAINAGE
- PROPOSED RESERVES - OPEN SPACE
- PROPOSED ROAD NETWORK
- EXISTING ROADS
- PROPOSED BOUNDARIES

**Beca**

**LINCOLNSHIRE FARM LTD**

**LINCOLNSHIRE FARM DEVELOPMENT**

LOTS 1-300 BEING SUBDIVISION OF PART SECTIONS 4 & 6 HOROKIWI ROAD DISTRICT, LOT 7 DP 490589 AND LOT 2 DP 305488

DATE: 10/07/21

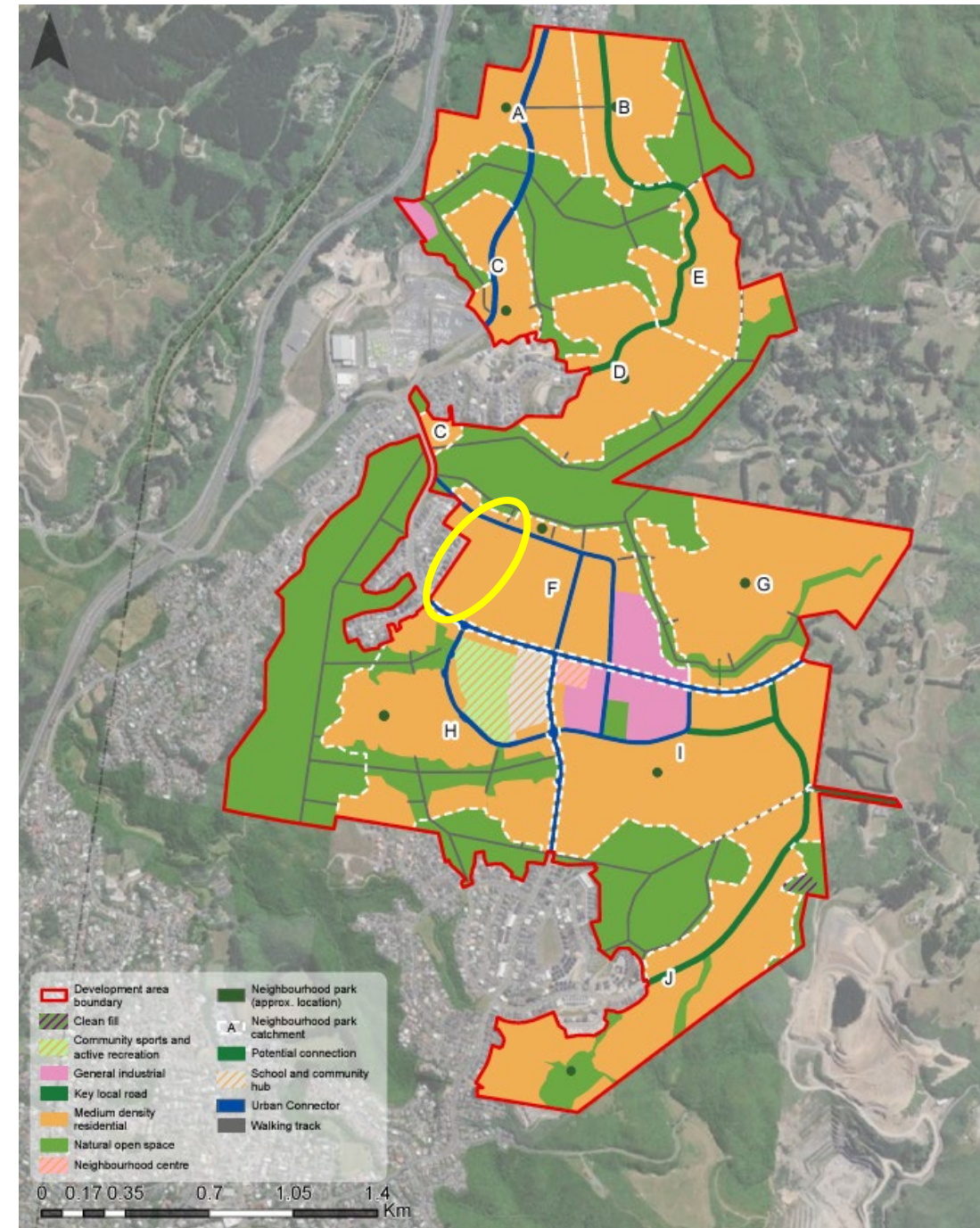
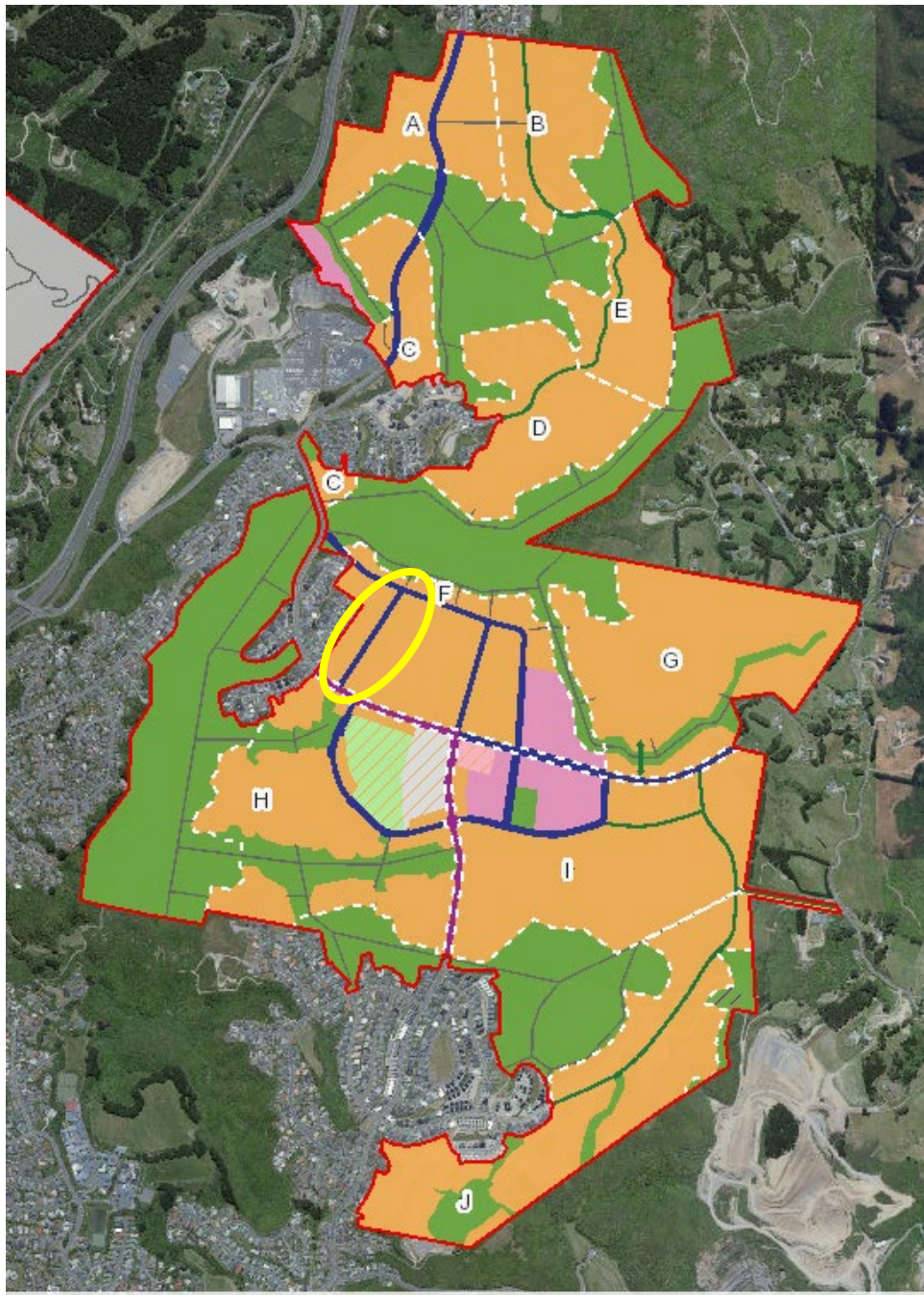
PROJECT: SURVEY

3322602-101-C-002

# Lincolnshire Farm



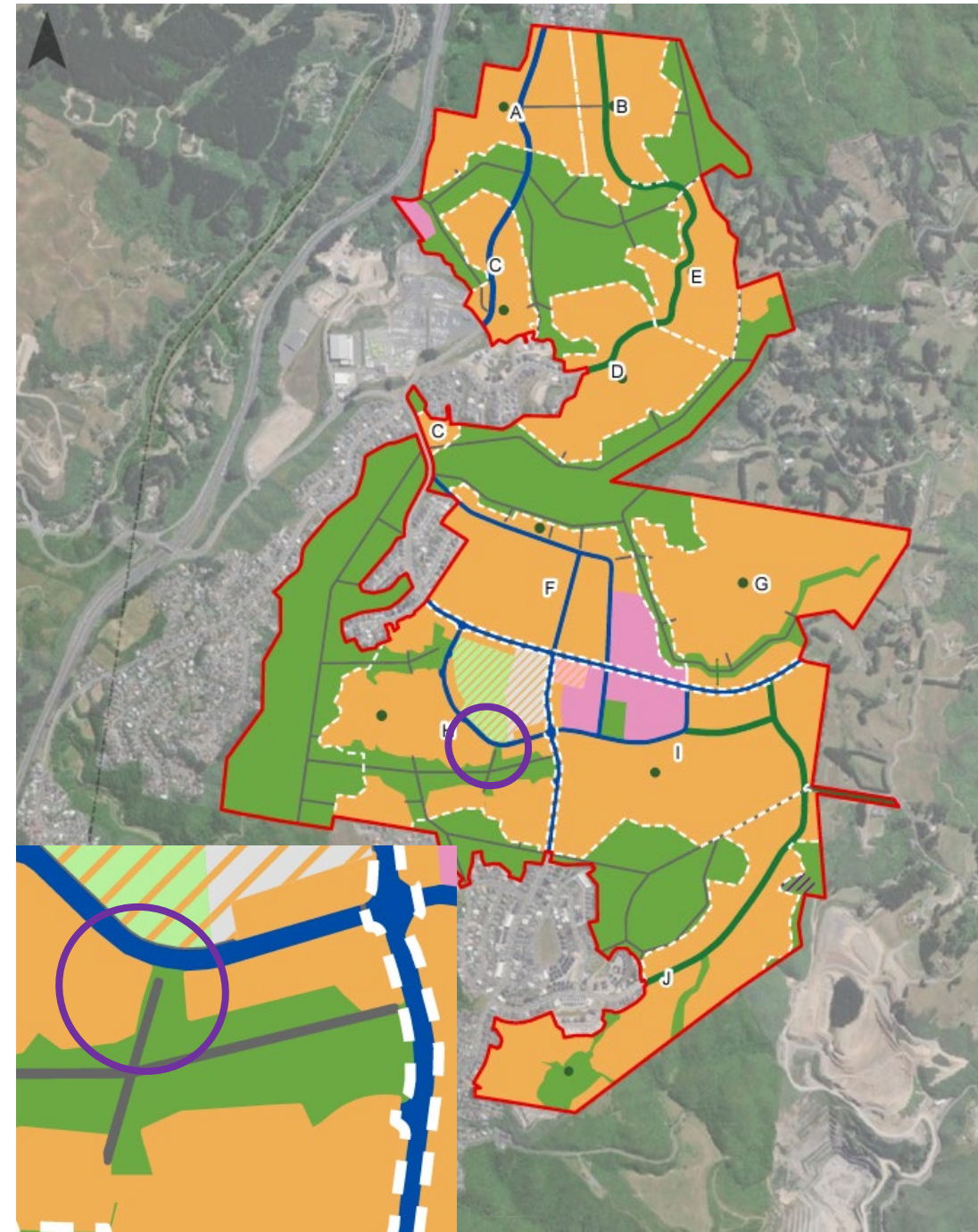
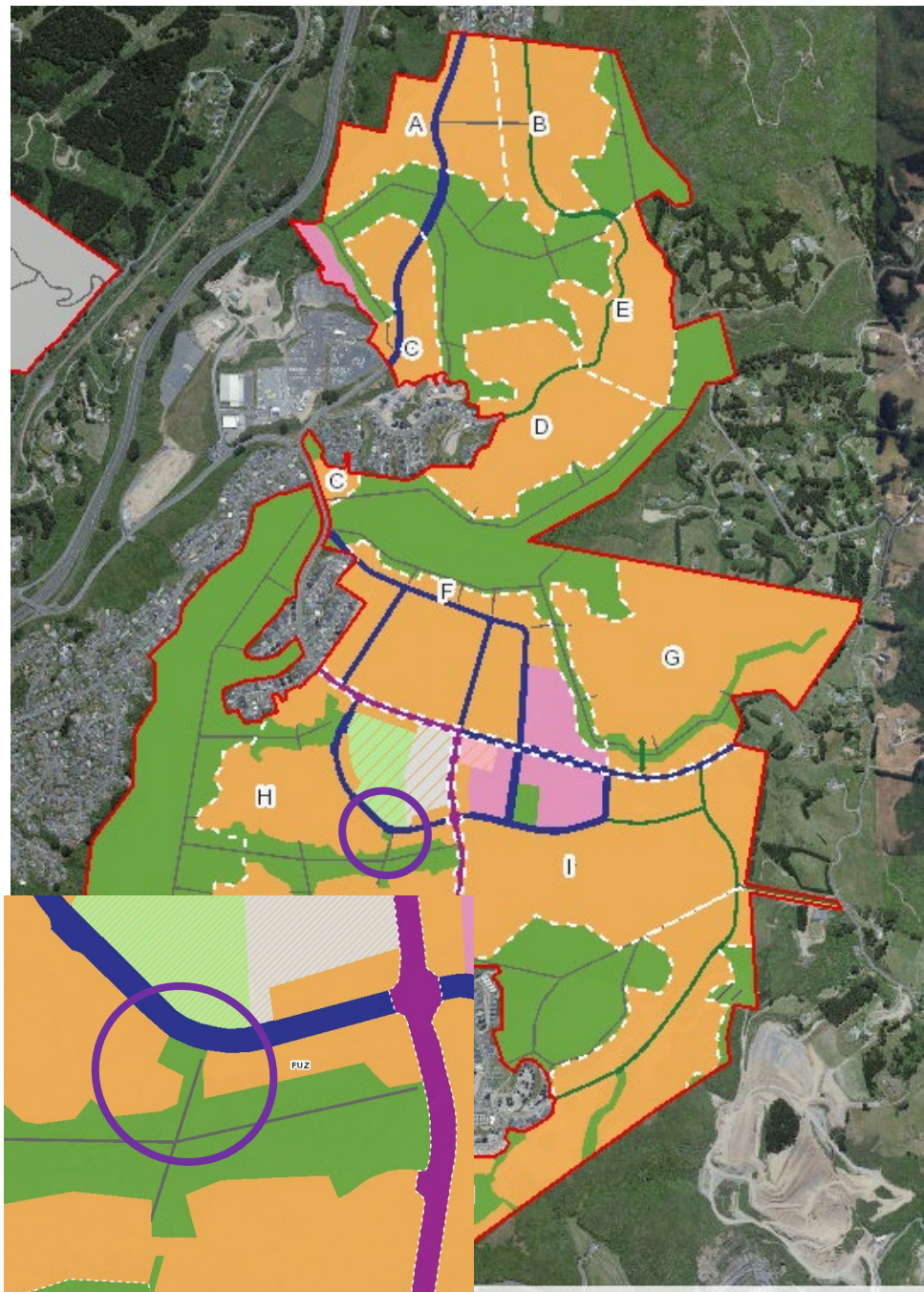
# Additional comparison



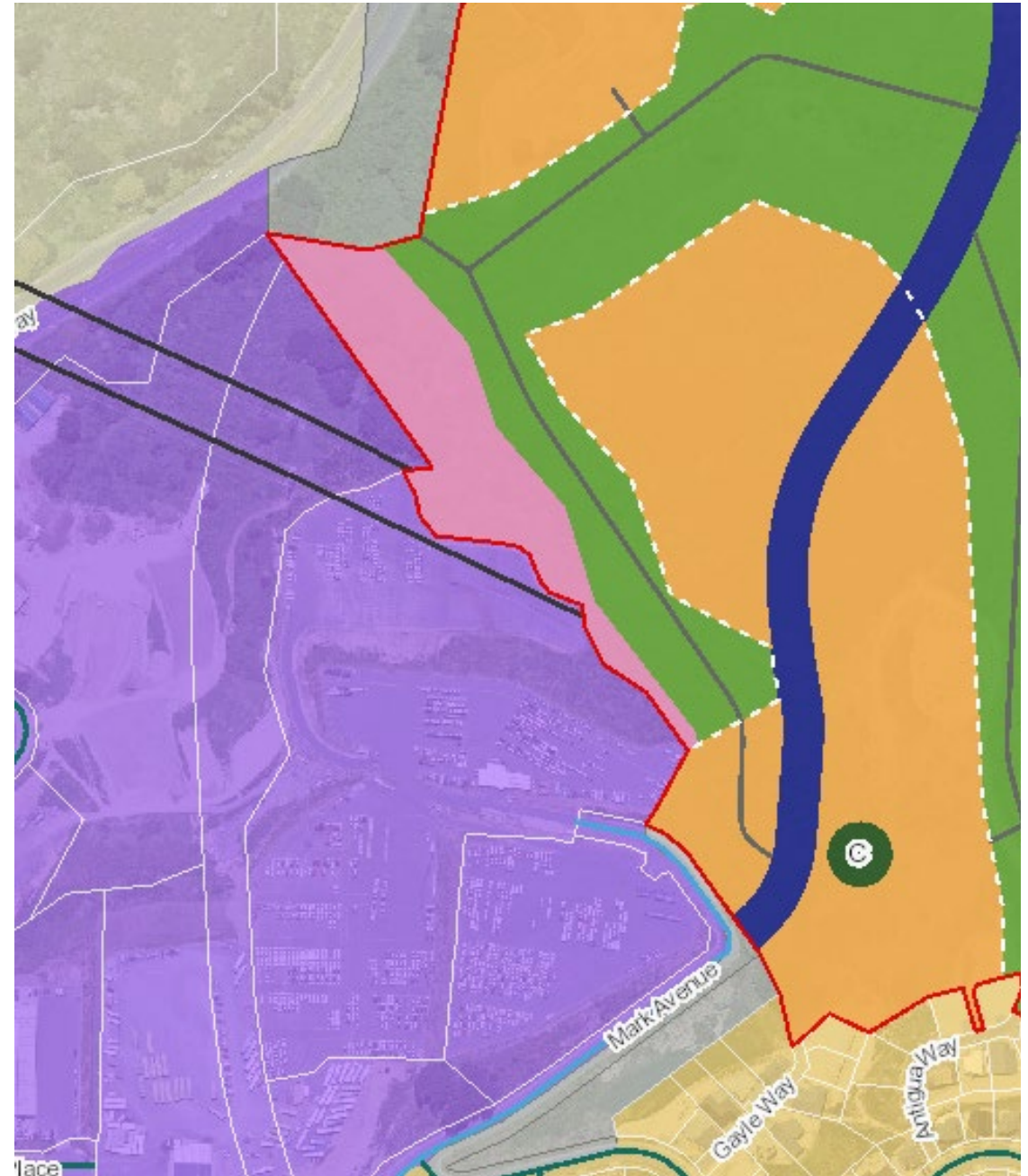
# Lincolnshire Farm



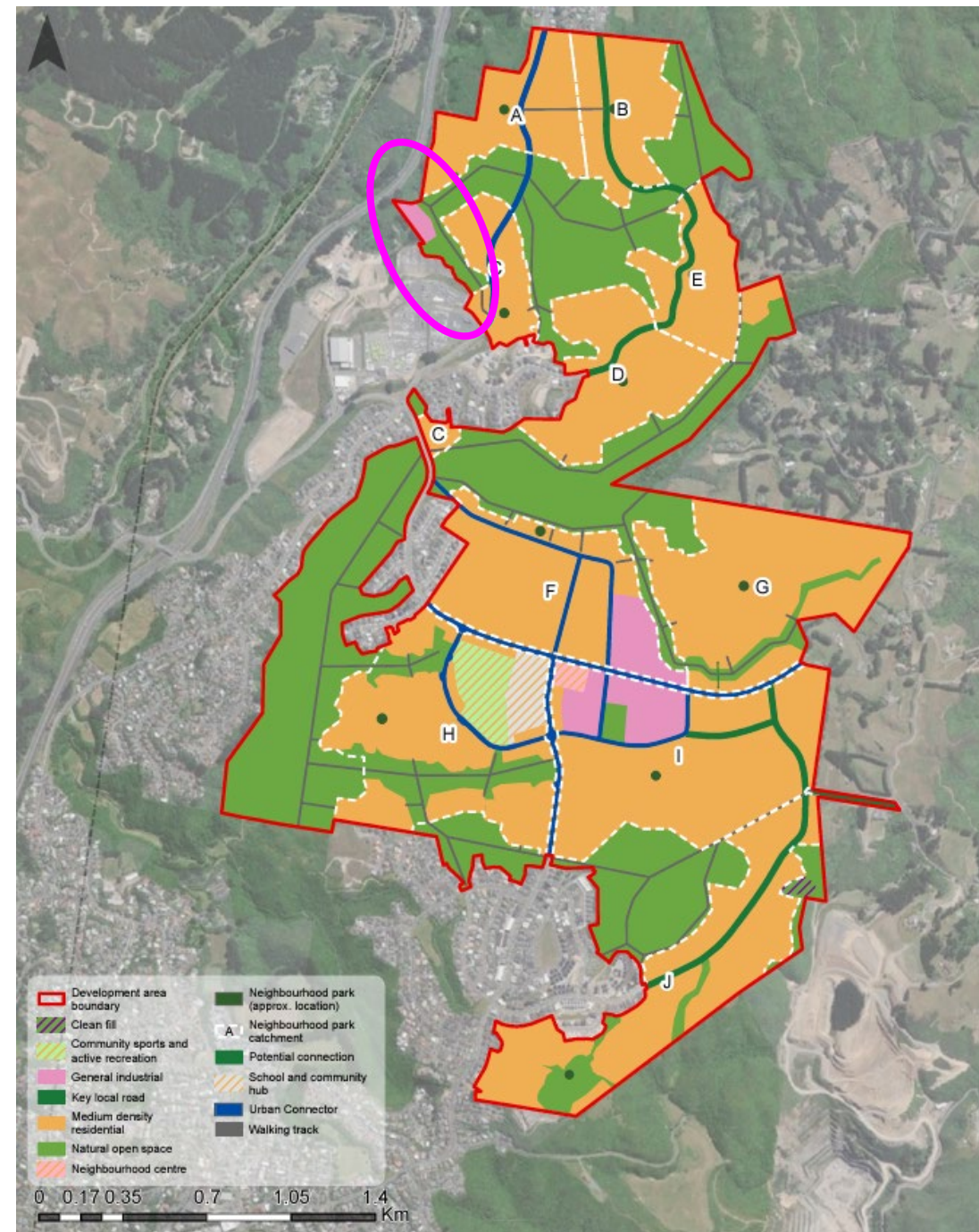
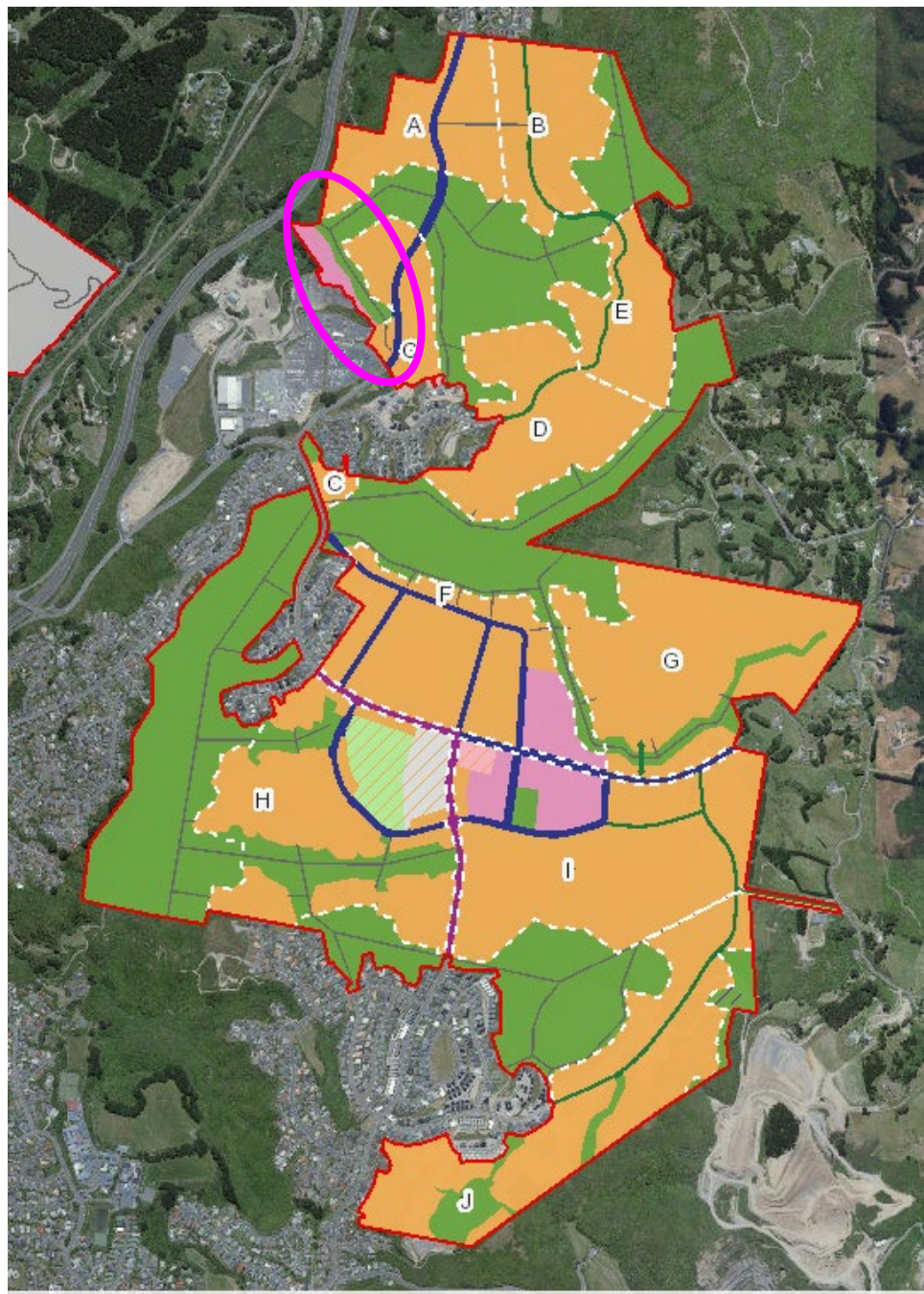
# Additional comparison



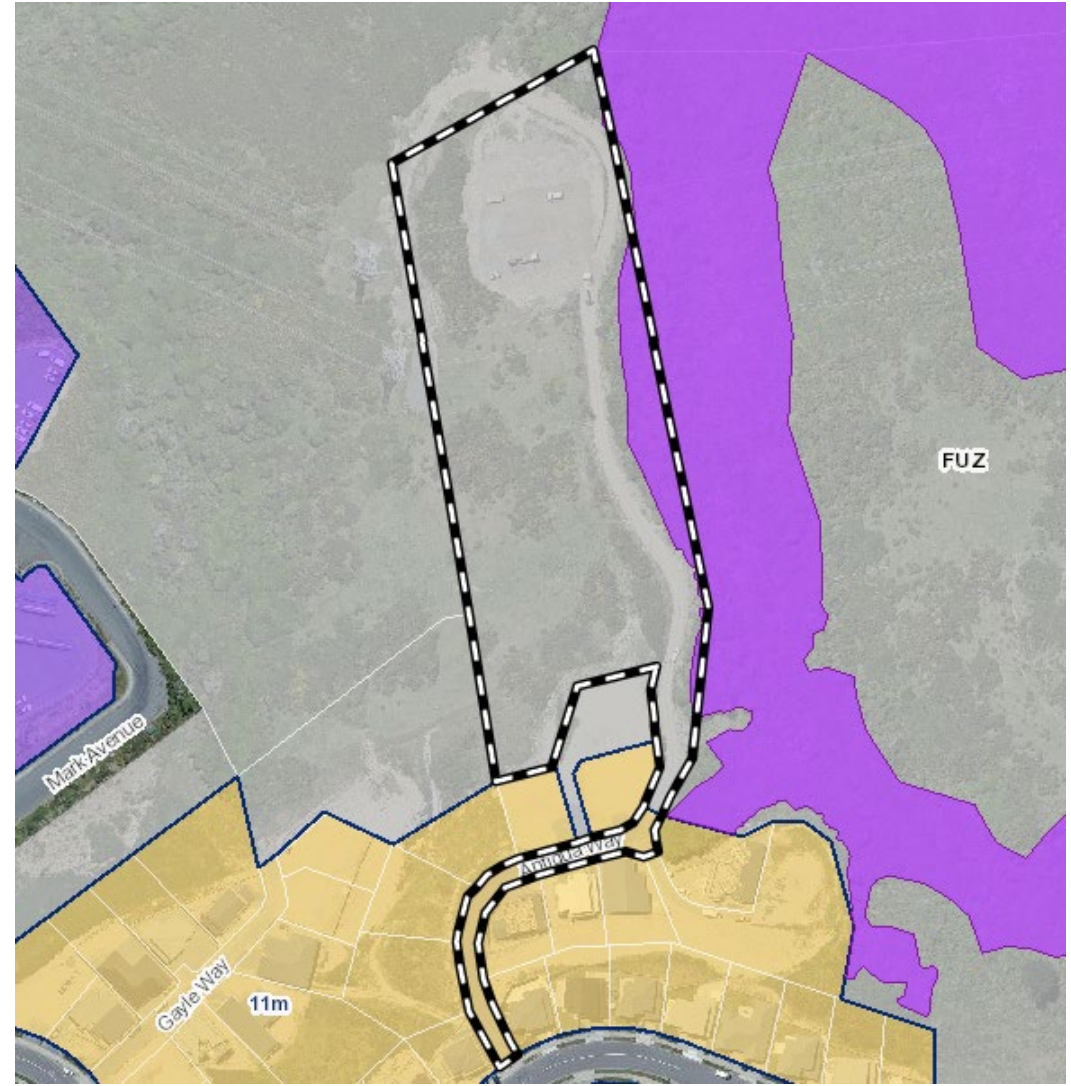
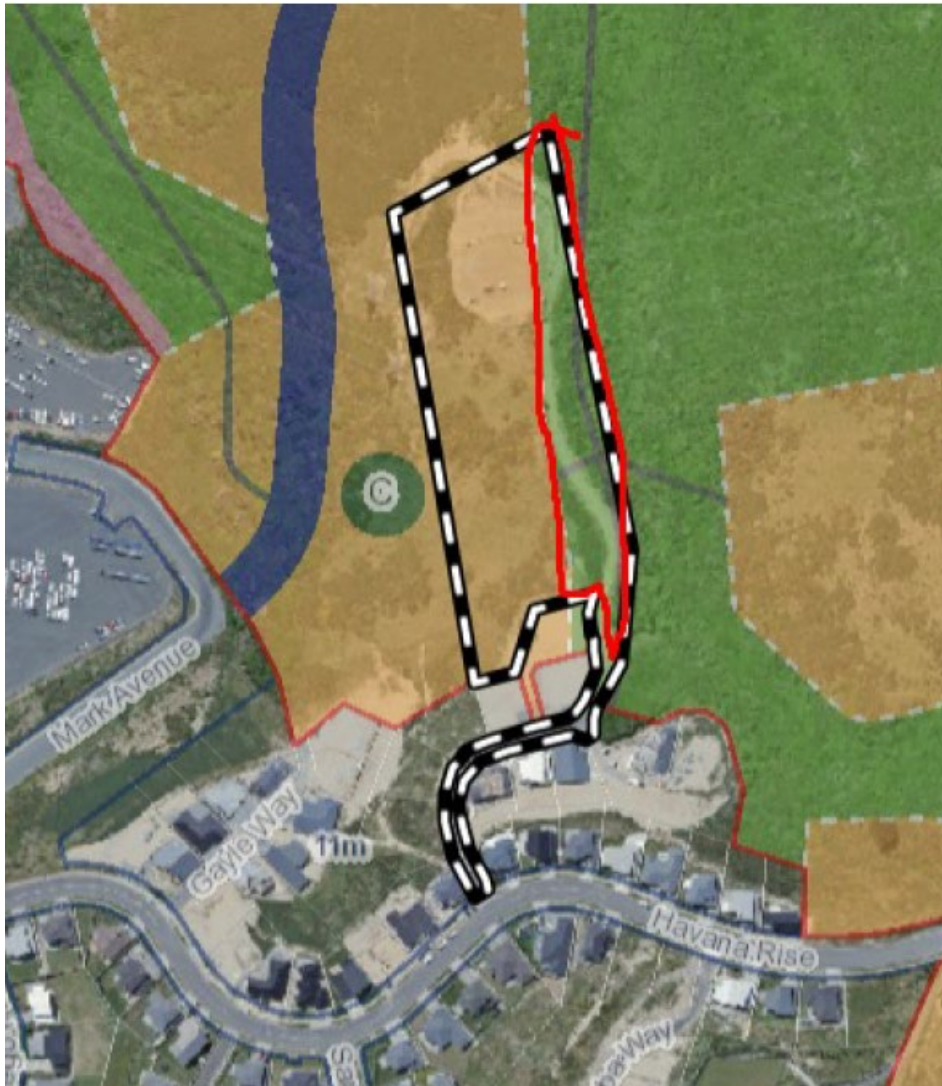
# Lincolnshire Farm



# Additional comparison

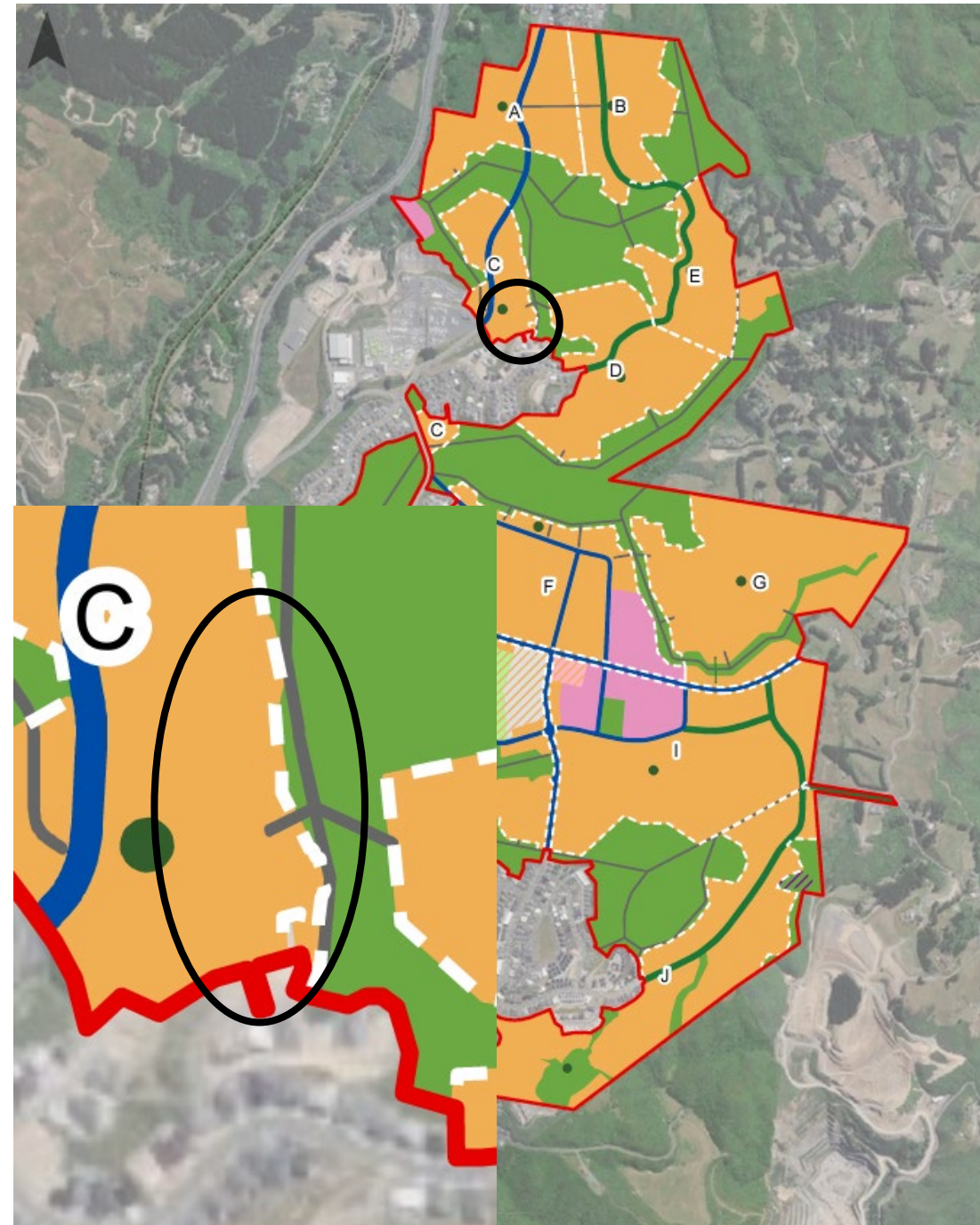
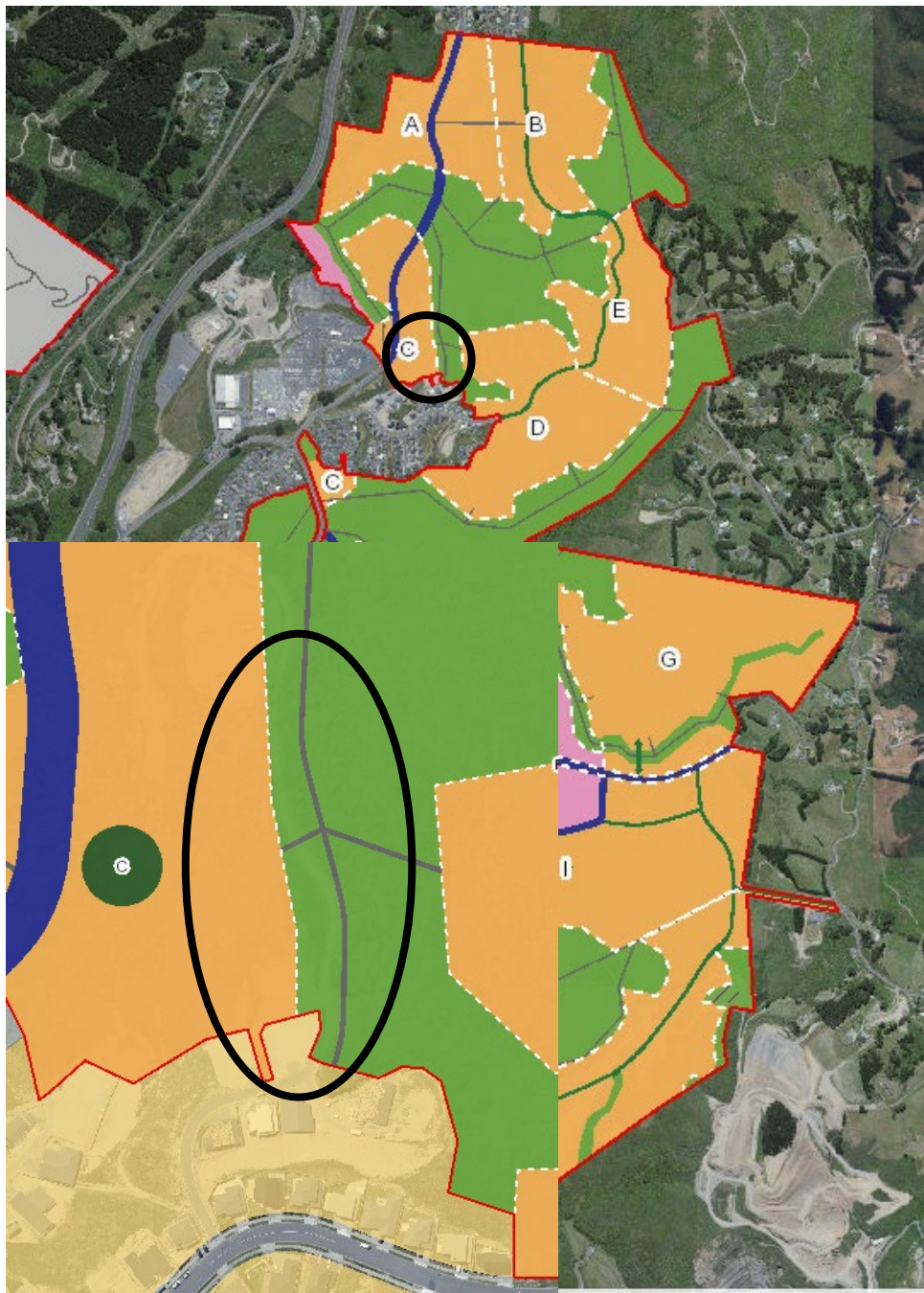


# Lincolnshire Farm

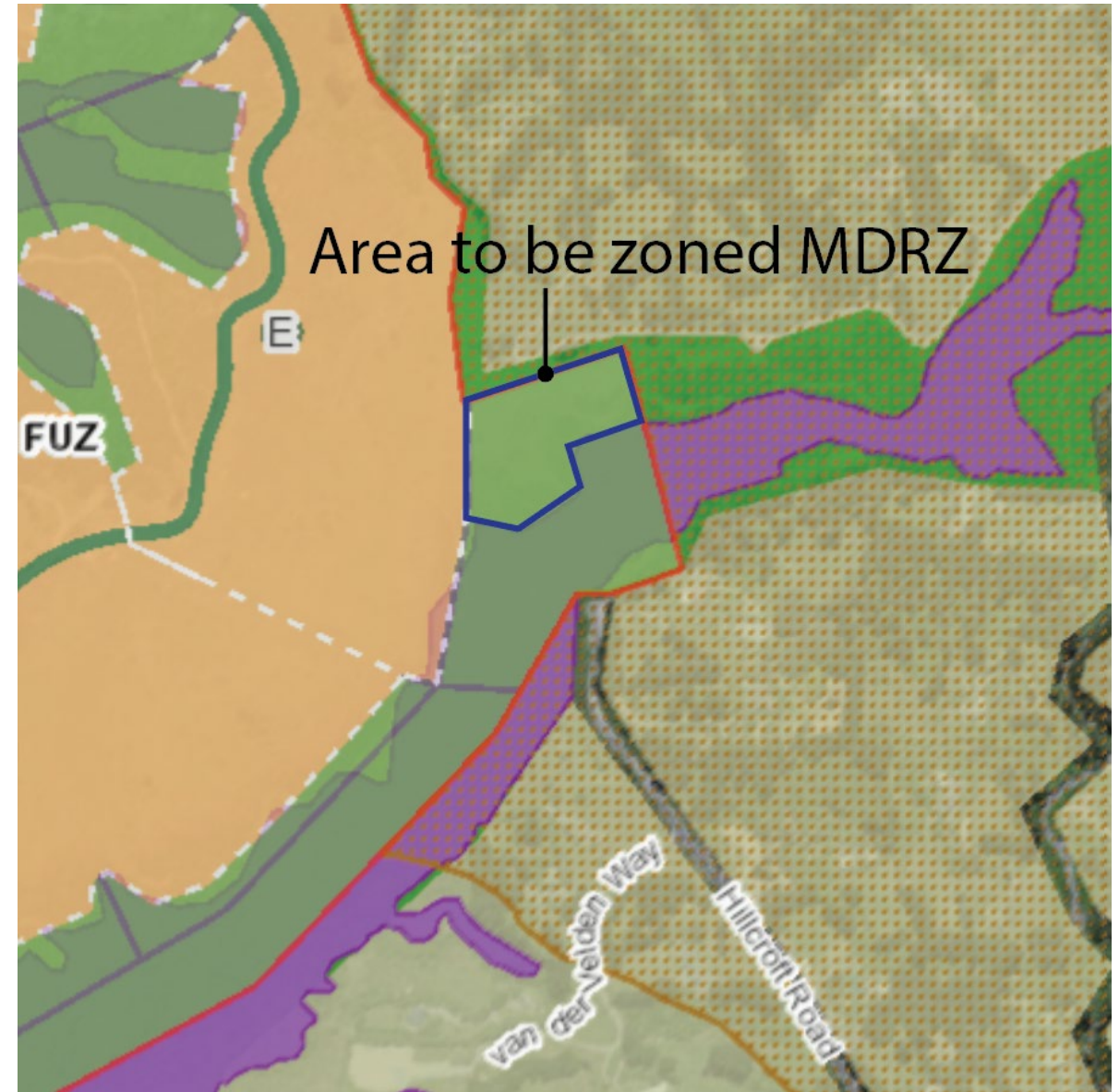




# Additional comparison



# Lincolnshire Farm



# Additional comparison

