

Proposed Site 10 Kumototo

Visual Simulations

Prepared: 19 September 2014



Existing View



Visual Simulation of Proposed Design

VP08 - Kumototo Site 10 - Corner - Lambton Quay & Whitmore St - 124 degrees

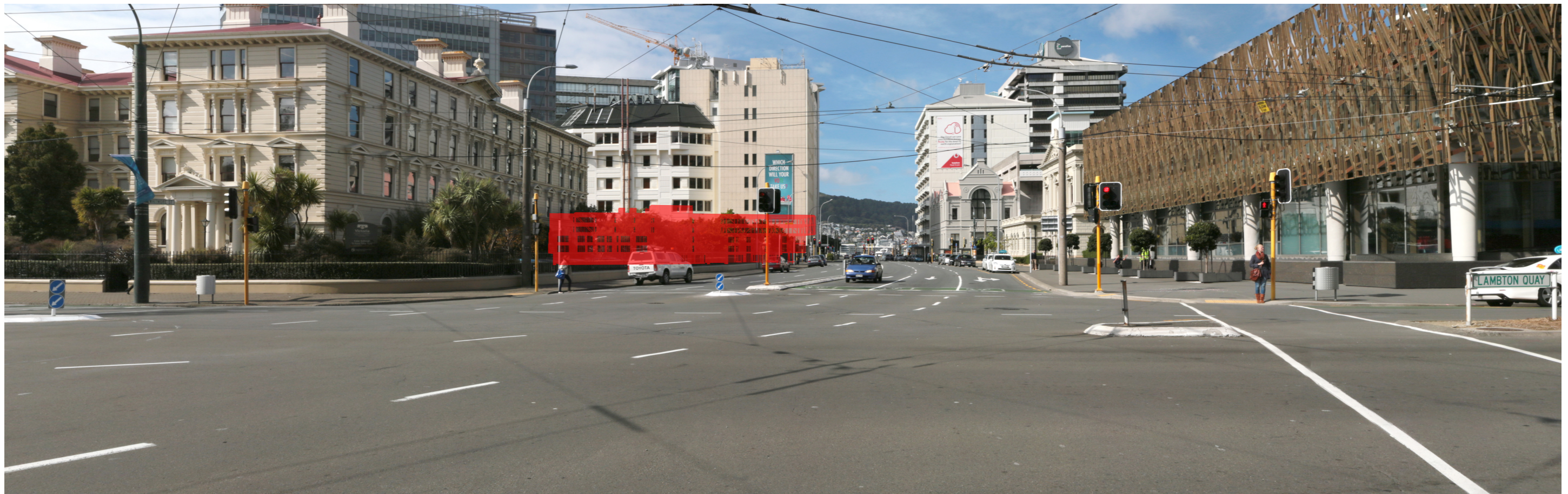
Camera Position - 1748808.960, 5428697.480, 2.320 - Co-ordinate system NZTM.
Camera 1390mm above ground. Photographed 11 September 2014 11:45am

Captured - Canon 6D with a 16mm lens
Image Projection Method - Rectilinear Perspective

Field of View - 124 degrees Horizontal x 55 degrees Vertical
Viewing distances - A1 230mm, A2 163mm, A3 115mm



Existing View



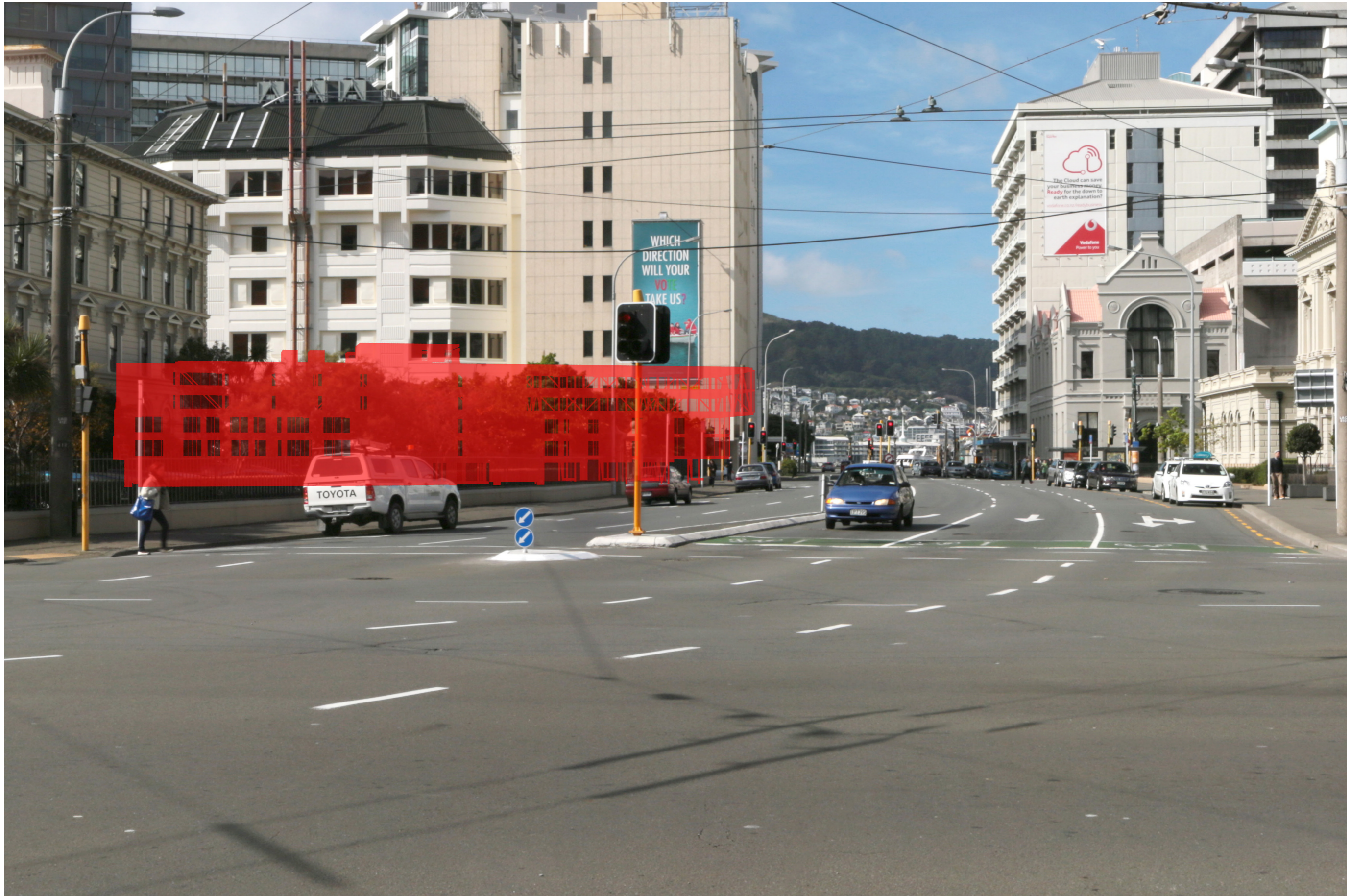
Visual Simulation of Proposed Design

VP08 - Kumototo Site 10 - Corner - Lambton Quay & Whitmore St - 90 degrees

Camera Position - 1748808.960, 5428697.480, 2.320 - Co-ordinate system NZTM.
Camera 1390mm above ground. Photographed 11 September 2014 11:45am

Captured - Canon 6D with a 16mm lens
Image Projection Method - Rectilinear

Field of View - 90 degrees Horizontal x 35 degrees Vertical
Viewing distances - A1 375mm, A2 265mm, A3 187mm



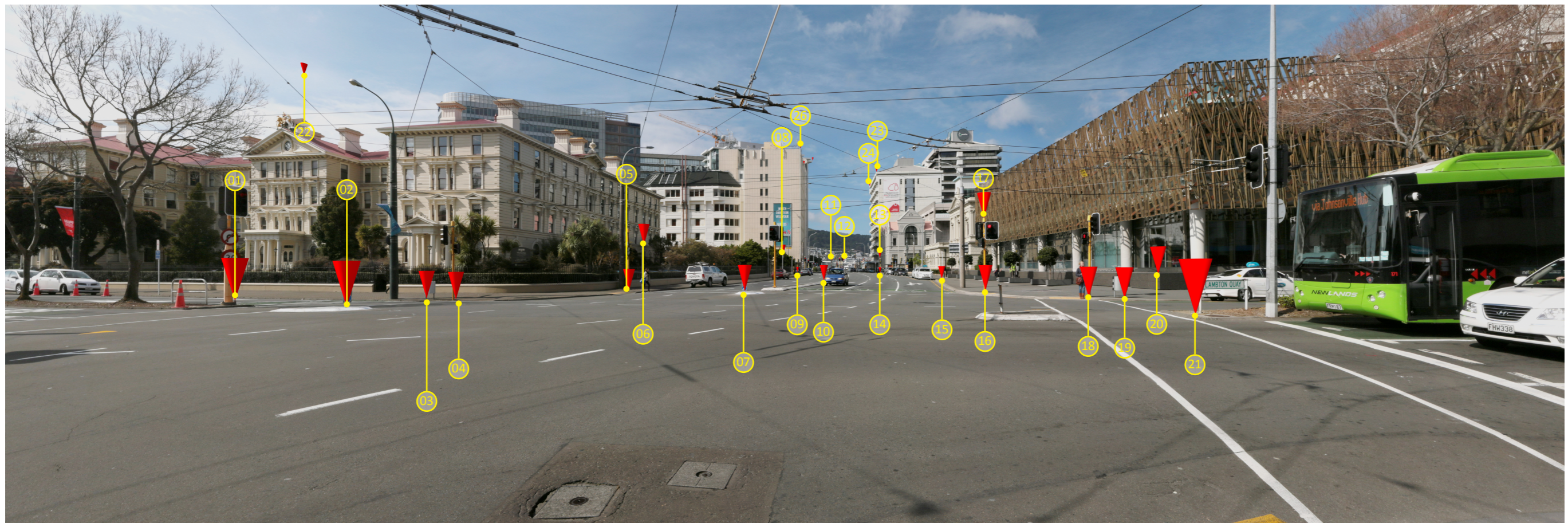
Visual Simulation of Proposed Design

VP08 - Kumototo Site 10 - Corner - Lambton Quay & Whitmore St - 50mm Lens

Camera Position - 1748808.960, 5428697.480, 2.320 - Co-ordinate system NZTM.
Camera 1390mm above ground. Photographed 11 September 2014 11:45am

Captured - Canon 6D with a 16mm lens
Image Projection Method - Rectilinear

Field of View - 39.6 degrees Horizontal x 27 degrees Vertical
Viewing distances - A1 700mm, A2 495mm, A3 350mm



Tie Point Locations

TIE POINT LOCATIONS

| | | | | | | | |
|----|-------------|-------------|-------|----|-------------|-------------|--------|
| 1 | 1748836.330 | 5428697.790 | 2.580 | 16 | 1748818.070 | 5428667.620 | 2.330 |
| 2 | 1748830.750 | 5428694.890 | 2.450 | 17 | 1748818.160 | 5428667.540 | 6.600 |
| 3 | 1748841.560 | 5428689.930 | 2.060 | 18 | 1748812.360 | 5428669.370 | 2.220 |
| 4 | 1748840.330 | 5428688.750 | 2.000 | 19 | 1748810.830 | 5428668.740 | 2.190 |
| 5 | 1748838.870 | 5428678.330 | 2.120 | 20 | 1748809.490 | 5428663.540 | 3.300 |
| 6 | 1748838.980 | 5428677.030 | 5.310 | 21 | 1748808.340 | 5428680.020 | 2.420 |
| 7 | 1748828.340 | 5428677.580 | 2.360 | 22 | 1748901.330 | 5428691.480 | 28.800 |
| 8 | 1748855.810 | 5428641.150 | 5.620 | 23 | 1748892.650 | 5428545.630 | 36.890 |
| 9 | 1748894.110 | 5428588.750 | 2.360 | 24 | 1748909.260 | 5428521.280 | 36.860 |
| 10 | 1748836.020 | 5428658.810 | 2.430 | 25 | 1748955.200 | 5428505.450 | 54.710 |
| 11 | 1748993.130 | 5428425.020 | 8.200 | 26 | 1748896.080 | 5428584.700 | 38.360 |
| 12 | 1748988.760 | 5428417.170 | 8.180 | 27 | 1748947.020 | 5428509.300 | 54.650 |
| 13 | 1748877.070 | 5428572.110 | 6.450 | | | | |
| 14 | 1748877.040 | 5428572.150 | 2.230 | | | | |
| 15 | 1748830.670 | 5428642.700 | 2.330 | | | | |



VP08 - Kumototo Site 10 - Corner - Lambton Quay & Whitmore St - Tie Points

Camera Position - 1748808.960, 5428697.480, 2.320 - Co-ordinate system NZTM.
 Camera 1390mm above ground. Photographed 11 September 2014 11:45am