



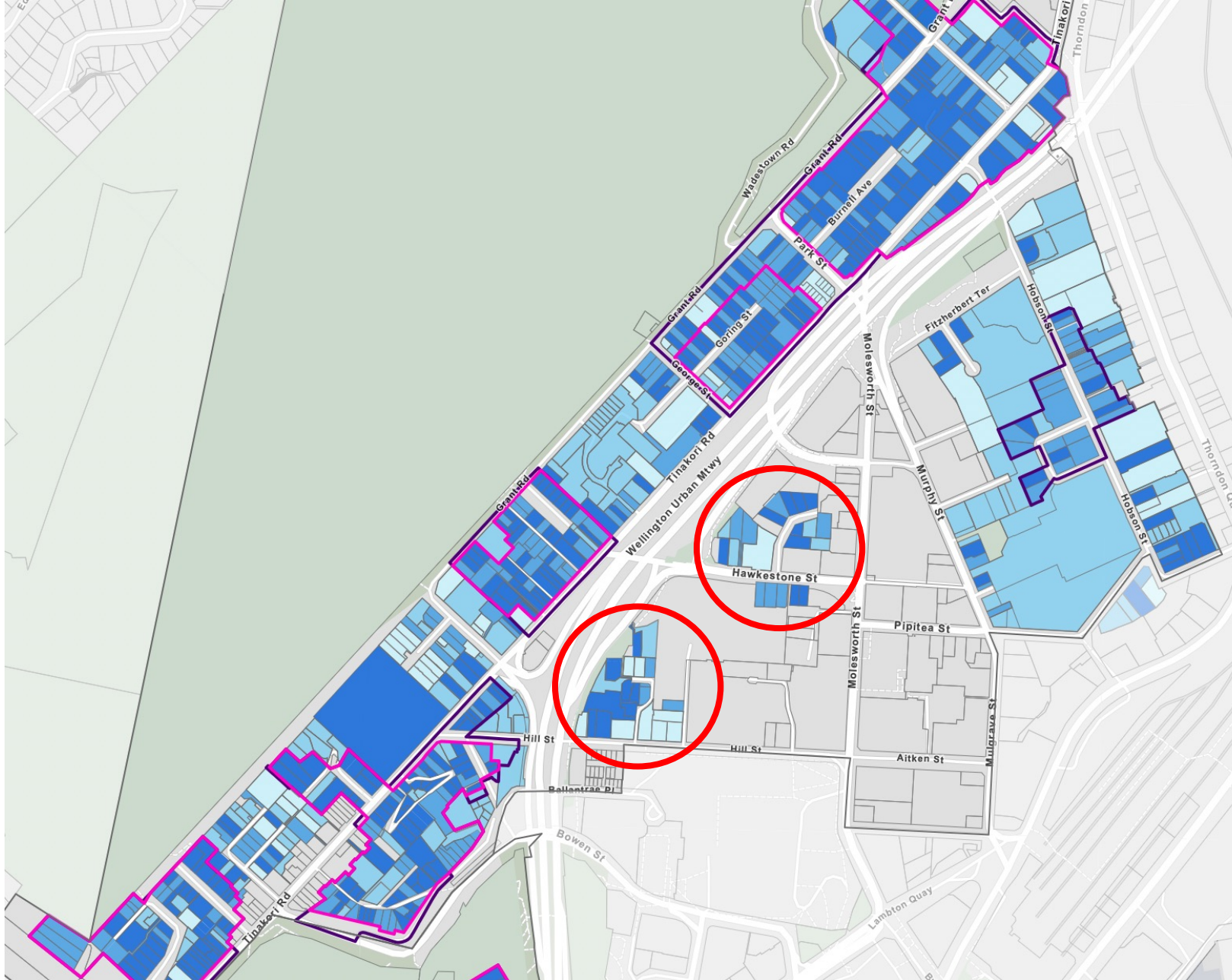
Submitter Statement by Historic Places Wellington

Stream 2 – 6 April 2023

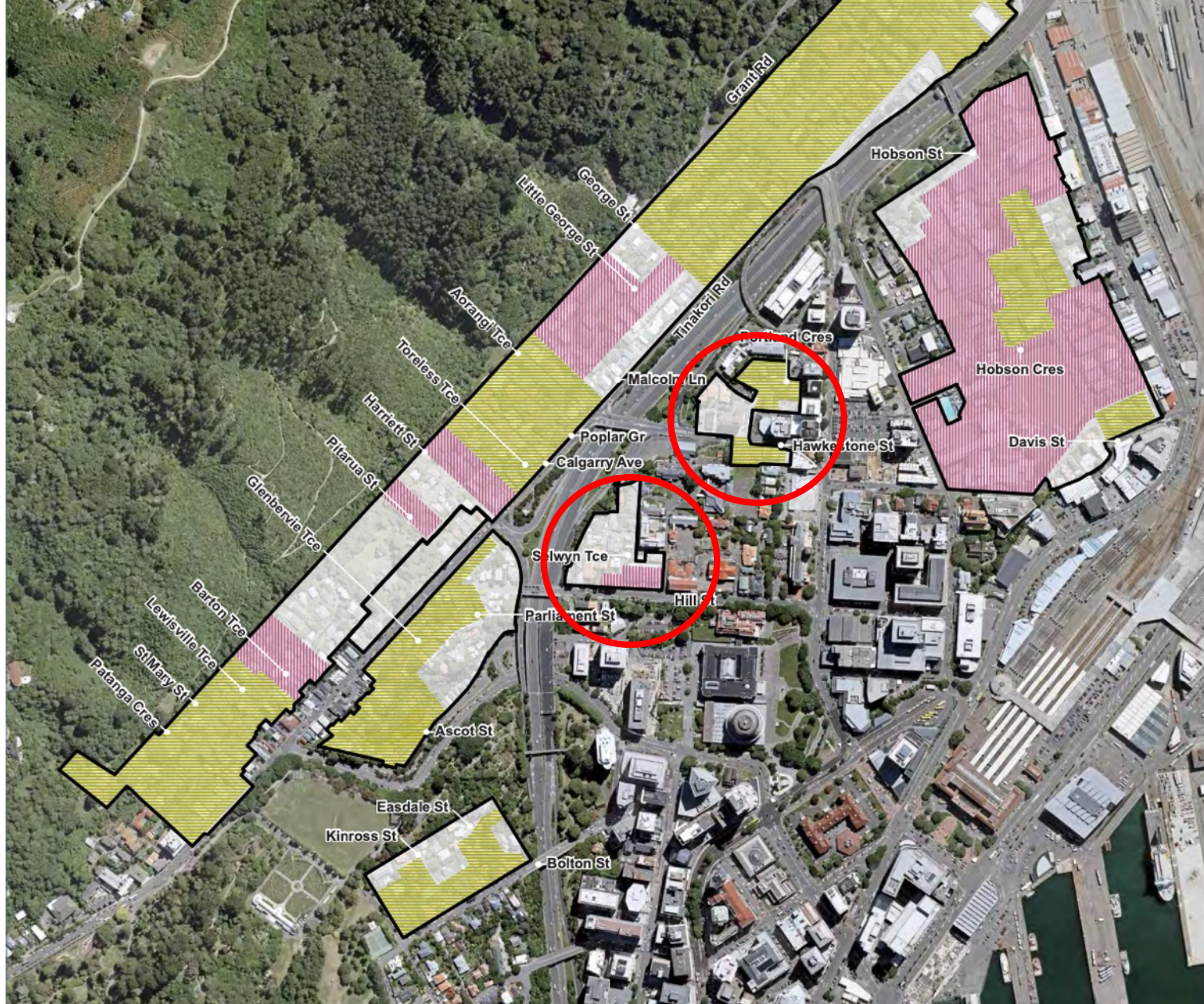
Presenters - Felicity Wong LLB (Hons), MPA (ANZSOG)

Christina Mackay BArch, MBA, FNZIA

<https://historicplaceswellington.org/>



Section 24A Report – Character Precincts - Thorndon



W18043 WCC REVIEW OF PRE 1930 CHARACTER AREAS
Indicative Character Contribution Sub-Areas: Thorndon
Date: 17 January 2019 | Revision: 0



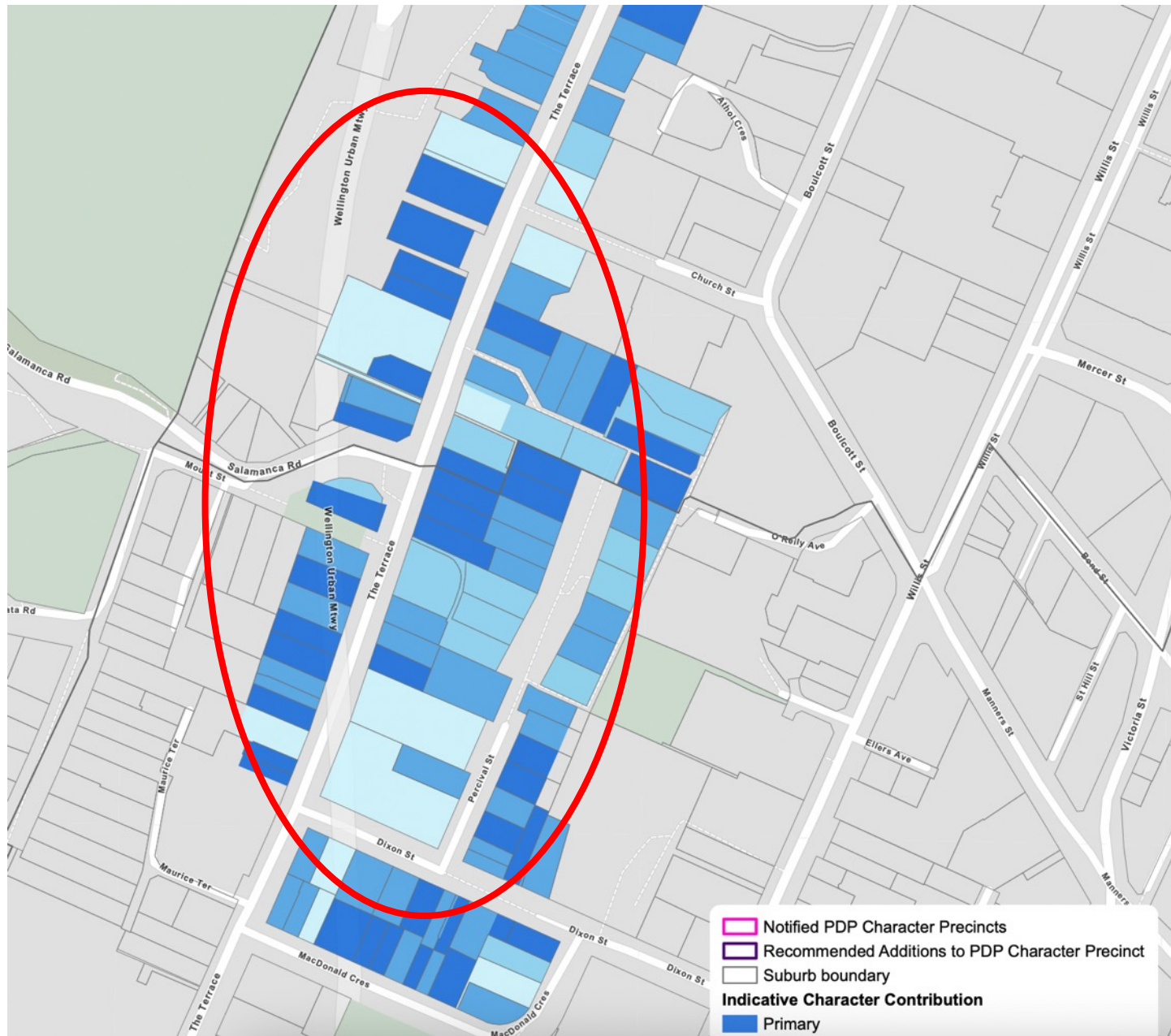
9 – 20 Selwyn Terrace (all) , THORNDON



15 – 24 Portland Crescent (all), THORNDON



15 – 25 Hawkestone Street (odd numbers only), THORNDON



Section 24A Report – Character Precincts – THE TERRACE

Legend
Pre 1930 Character Area
Indicative Character Contribution Sub-Areas
Primary/Contributory
Neutral/Detractive

This plan has been prepared by Boffa Buckle Murray on the specific instructions of our Client. It is solely for our Client's use and is intended to be used in accordance with the agreed scope of work. Any use or reliance by a third party is at their party's own risk. Where information has been supplied by the Client or obtained from other external sources, it has been accepted that it is accurate for the purposes of this plan. No liability or responsibility is accepted by Boffa Buckle Murray for any errors or omissions in the plan that may arise from inaccurate information provided by the Client or other external sources.

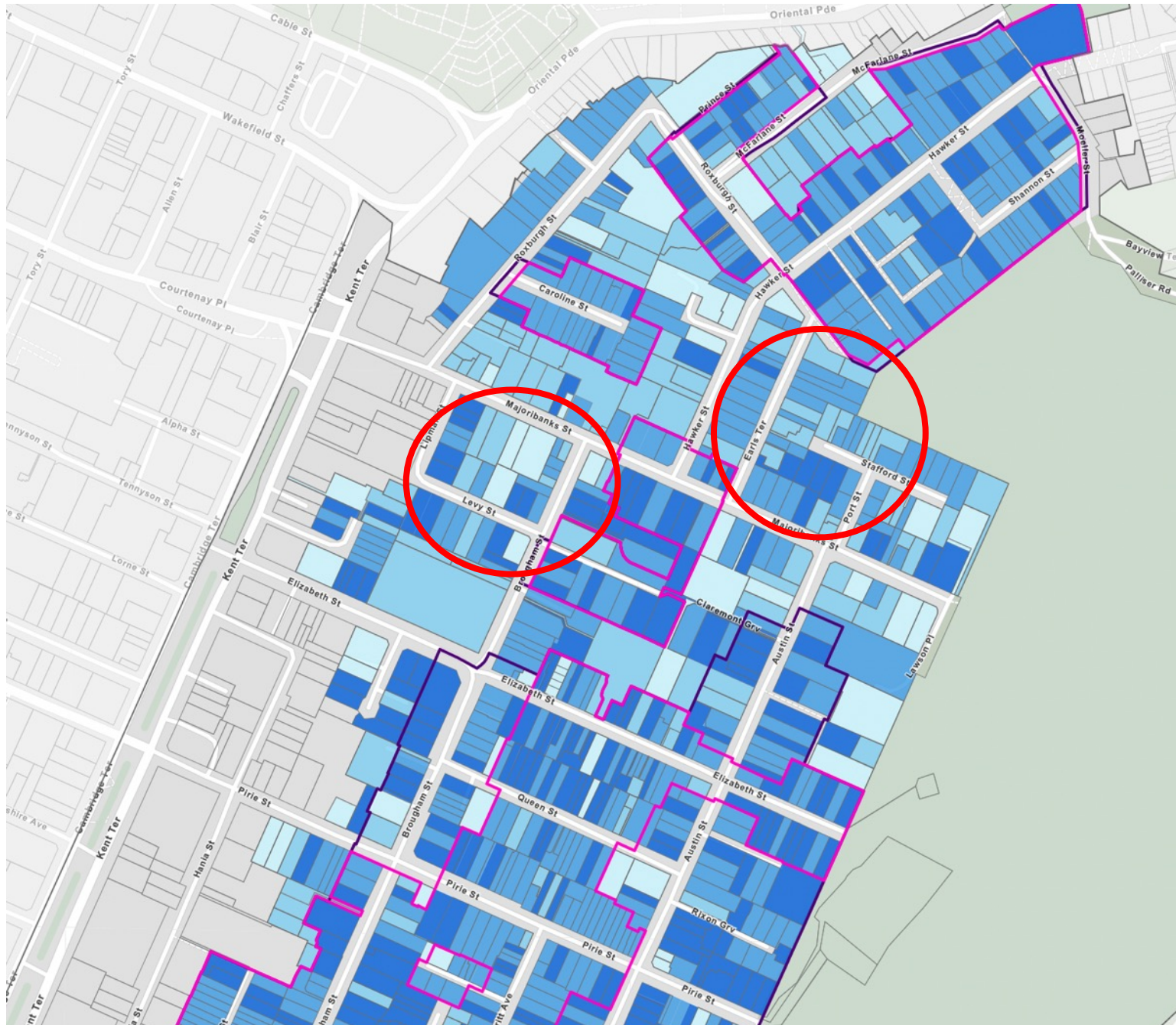




192 – 284 The Terrace (even numbers only), 199 – 253 The Terrace (odd numbers)



137 – 149 Dixon Street (odd numbers) 2 – 16 Percival (even numbers)



Proposed District Plan Character Precincts and Indicative Character Contribution by Boffa Miskell - Mount Victoria

Date: 17/03/2023



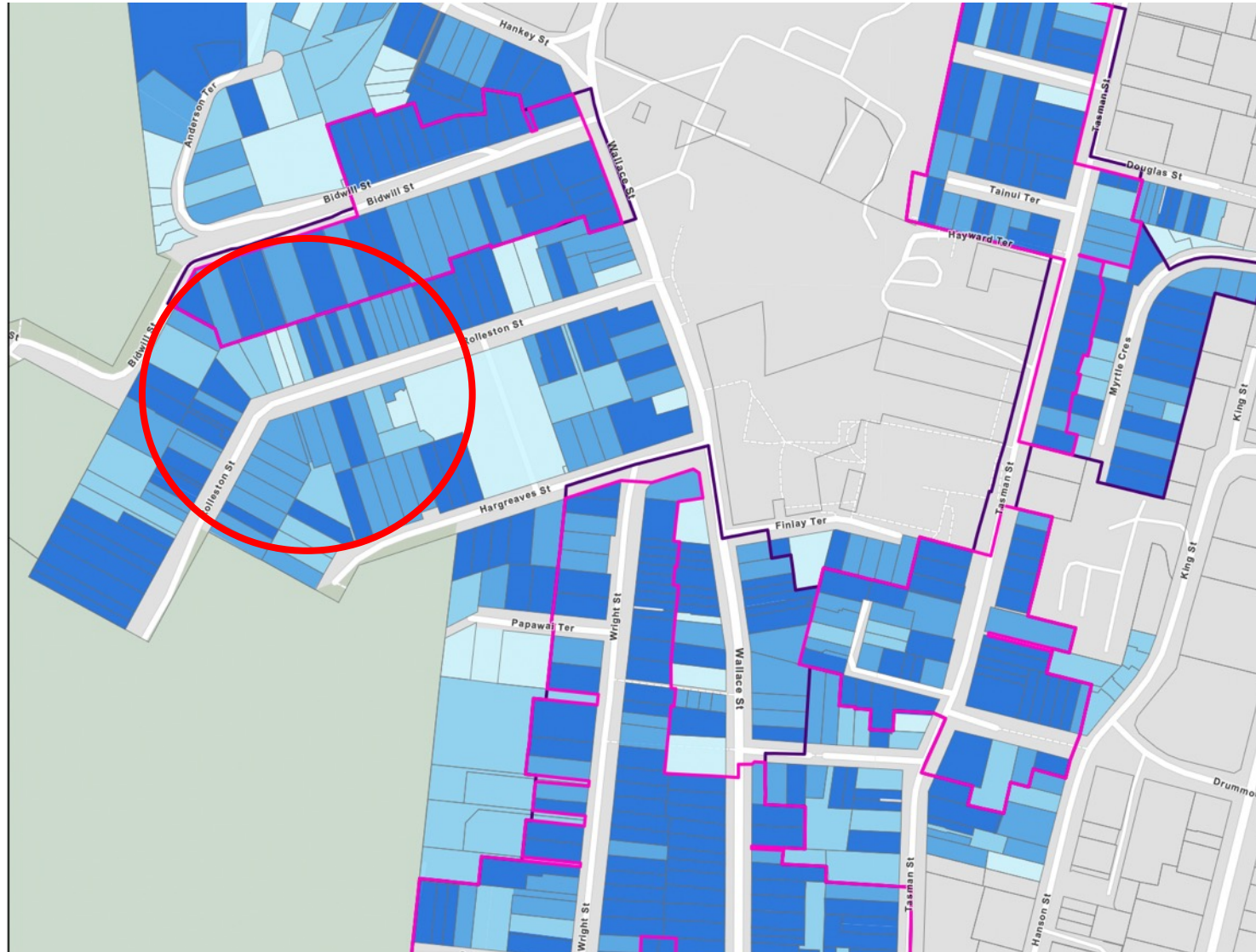
This plan has been prepared by Burffs Mitchell Limited on the specific instructions of our Client. It is solely for our Client's use in accordance with the agreed scope of work. Any use or reliance by a third party is at that party's own risk. Where information has been supplied by the Client or obtained from other external sources, it has been accepted that it is accurate. No liability or responsibility is accepted by Burffs Mitchell Limited for any errors or omissions in the report that may arise from inaccurate information provided by the Client or external sources.



6 -24 Earls Terrace + Stafford Street, MOUNT VICTORIA

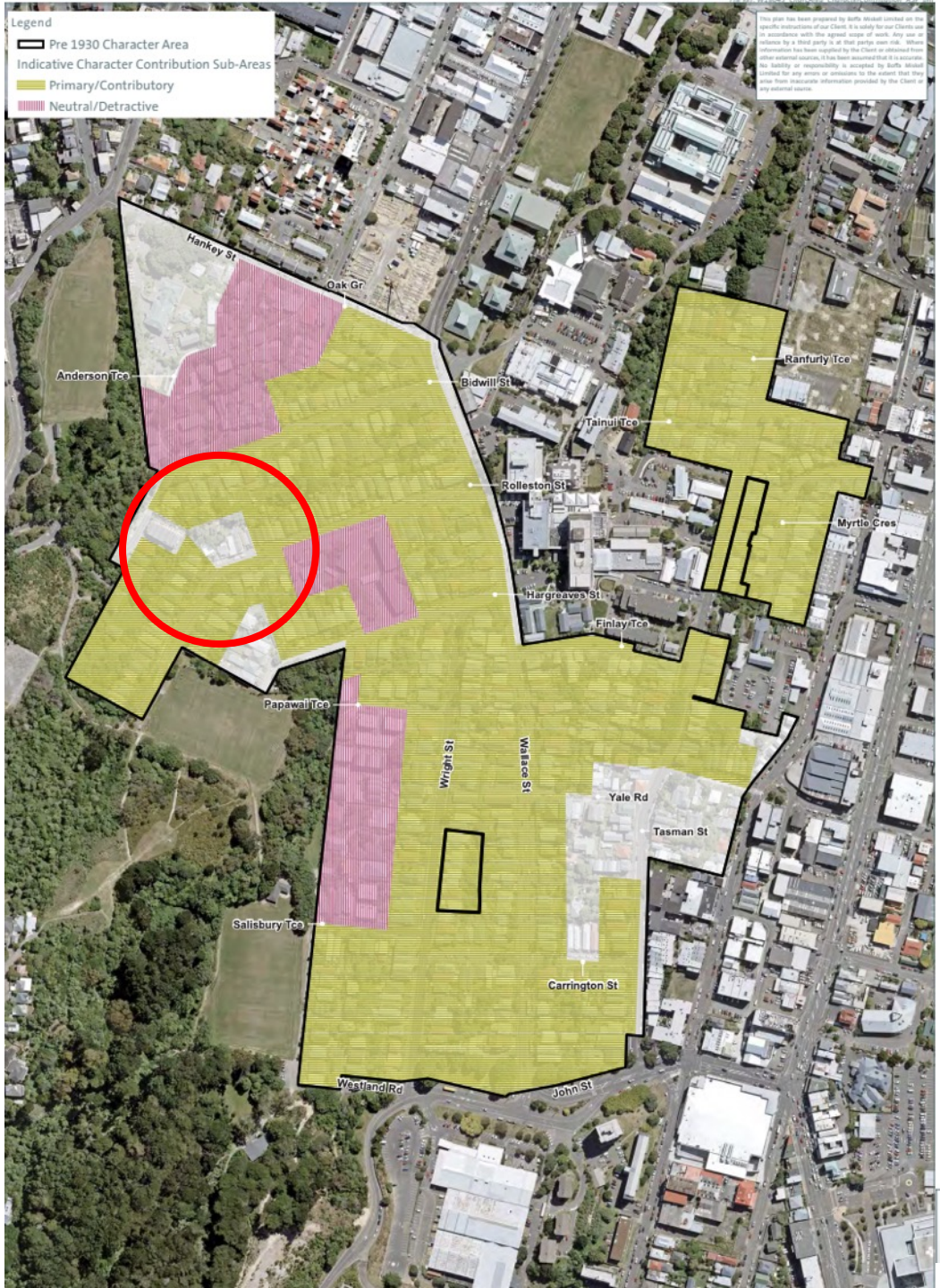


24 Majoribanks Street, 1 – 11 Litman Street (odd numbers) + 2 – 20 Levy Street, MOUNT VICTORIA



Proposed District Plan Character Precincts and Indicative Character Contribution by Boffa Miskell - Mount Cook

Date: 17/03/2023

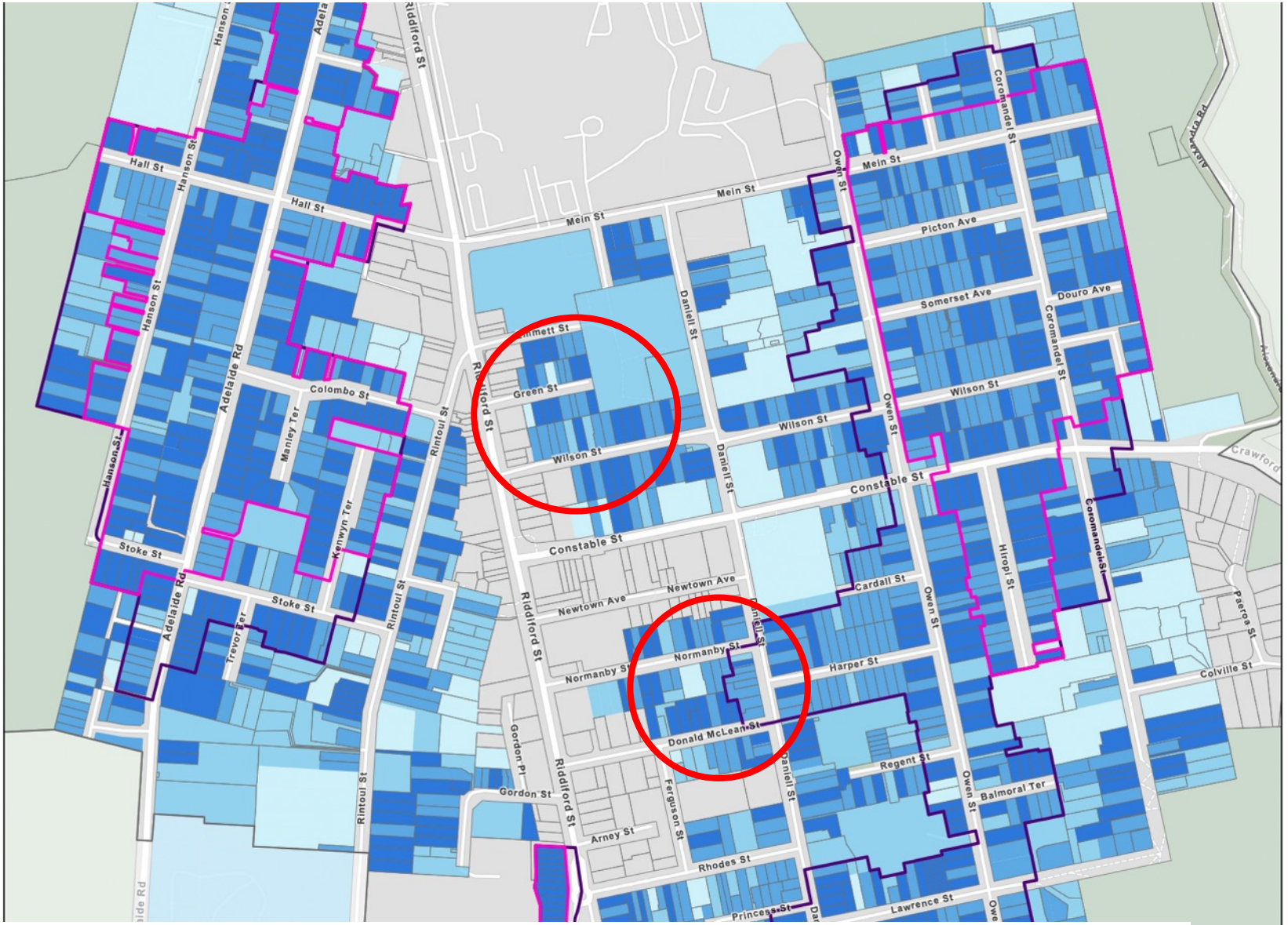




7 – 46 Hargreaves Street, MOUNT COOK

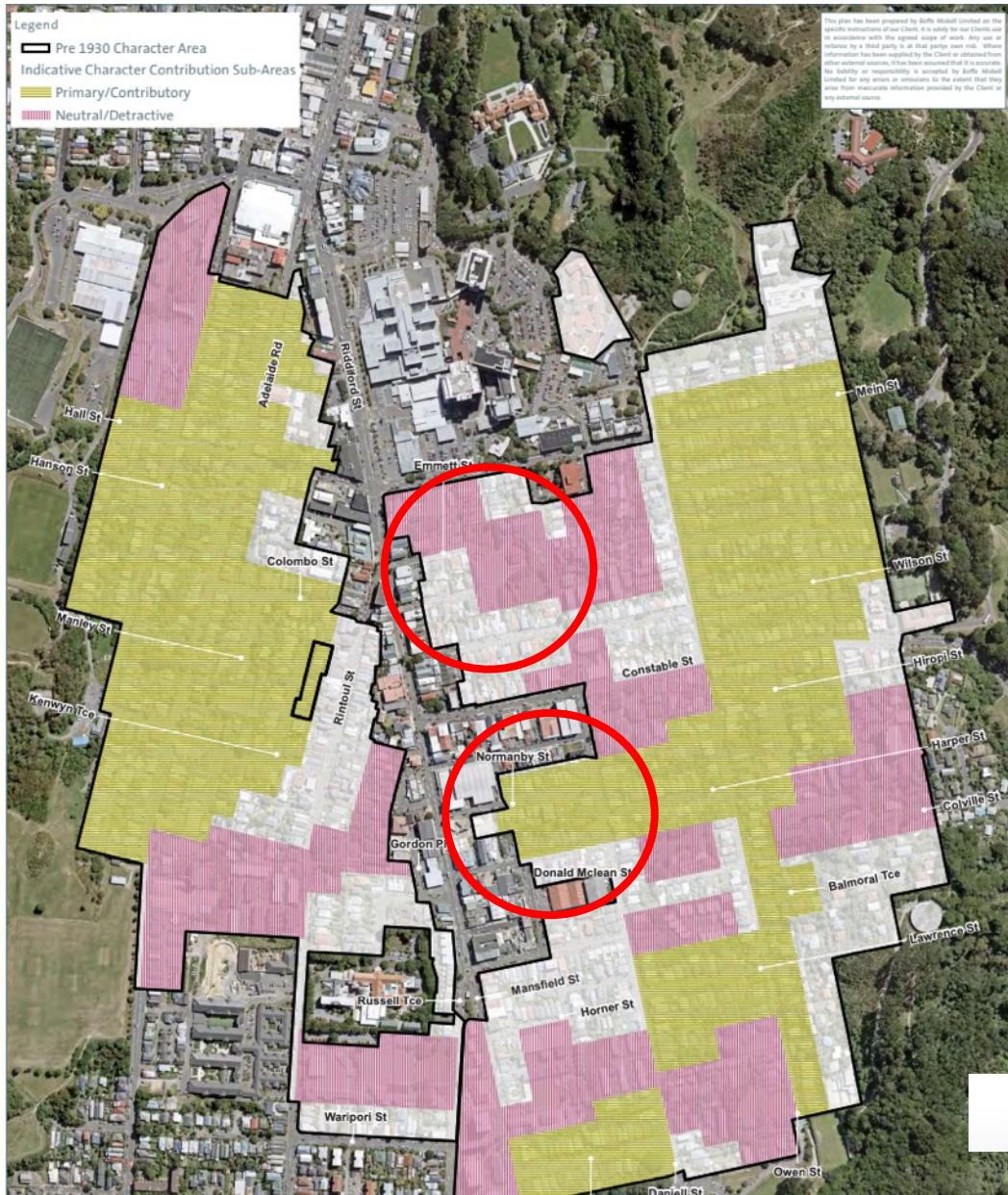


24 – 102 Rolleston Street, MOUNT COOK



Proposed District Plan Character Precincts and Indicative Character Contribution by Boffa Miskell - Newtown

Date: 17/03/2023

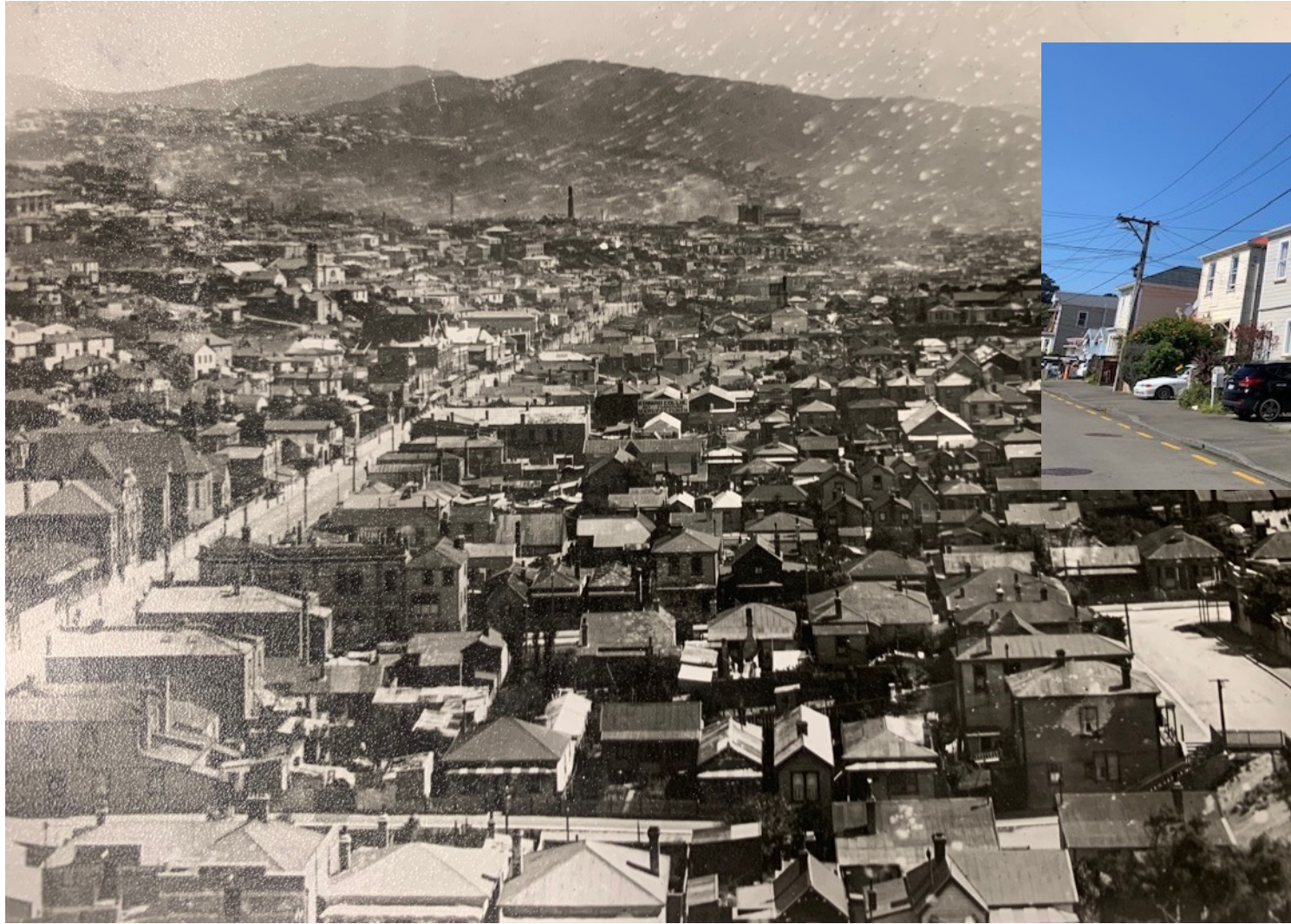




Green Street, NEWTOWN



4 – 20 Green Street (all) + 6 – 20 Emmett Street (even numbers only)



5, 7 – 33 Wilson Street ,
NEWTOWN
+ 6 – 20 Emmett Street
(even numbers only)

Newtown, Wellington 1908 – 10 (*National Library - G196731/1*)



15 – 38 Donald McLean Street (all) + 12 – 42 Normanby Street (all), NEWTOWN



Ann Devoy, 41 Normanby Street , NEWTOWN