

**PROPOSED DISTRICT PLAN CHANGE 33
DECISION OF HEARINGS COMMISSIONERS - RIDGELINES AND HILLTOPS
Inclusion of Quartz Hill, Makara**



--- Proposed Overlay Line as Notified in Plan Change 33
— Overlay line to be extended and shown on District Plan Maps 8, 9, 19 and 20 following decision by Hearings Commissioners



1:30,000

**PROPOSED DISTRICT PLAN CHANGE 33
DECISION OF HEARINGS COMMISSIONERS - RIDGELINES AND HILLTOPS
Submission #409 (Ridvan Garden Developments Ltd)**

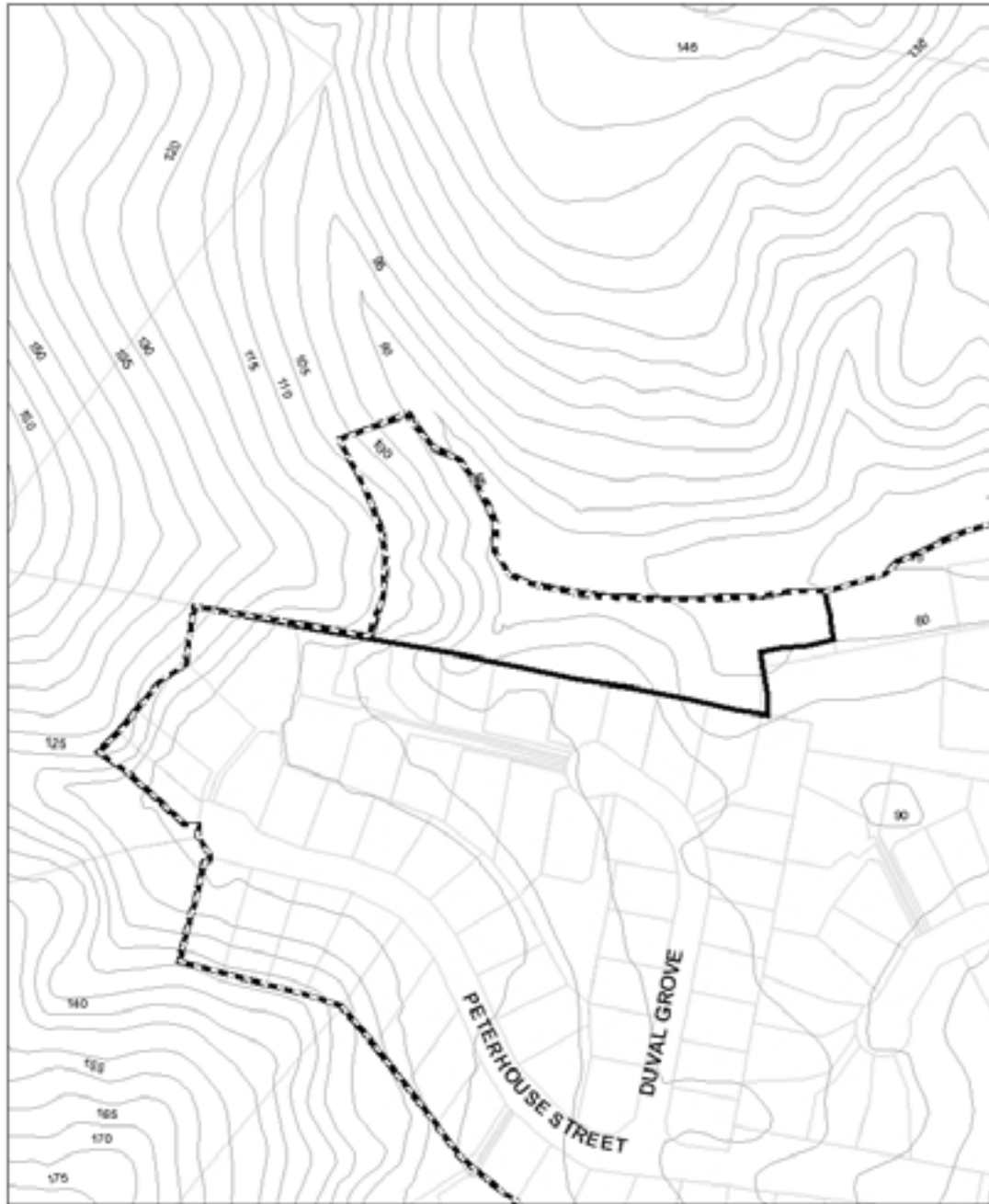


--- Overlay Line as decided by Hearings Commissioners
— Portion of the Plan Change 33 overlay as notified that is no longer included in the final overlay as decided by the Hearings Commissioners

1:2,000



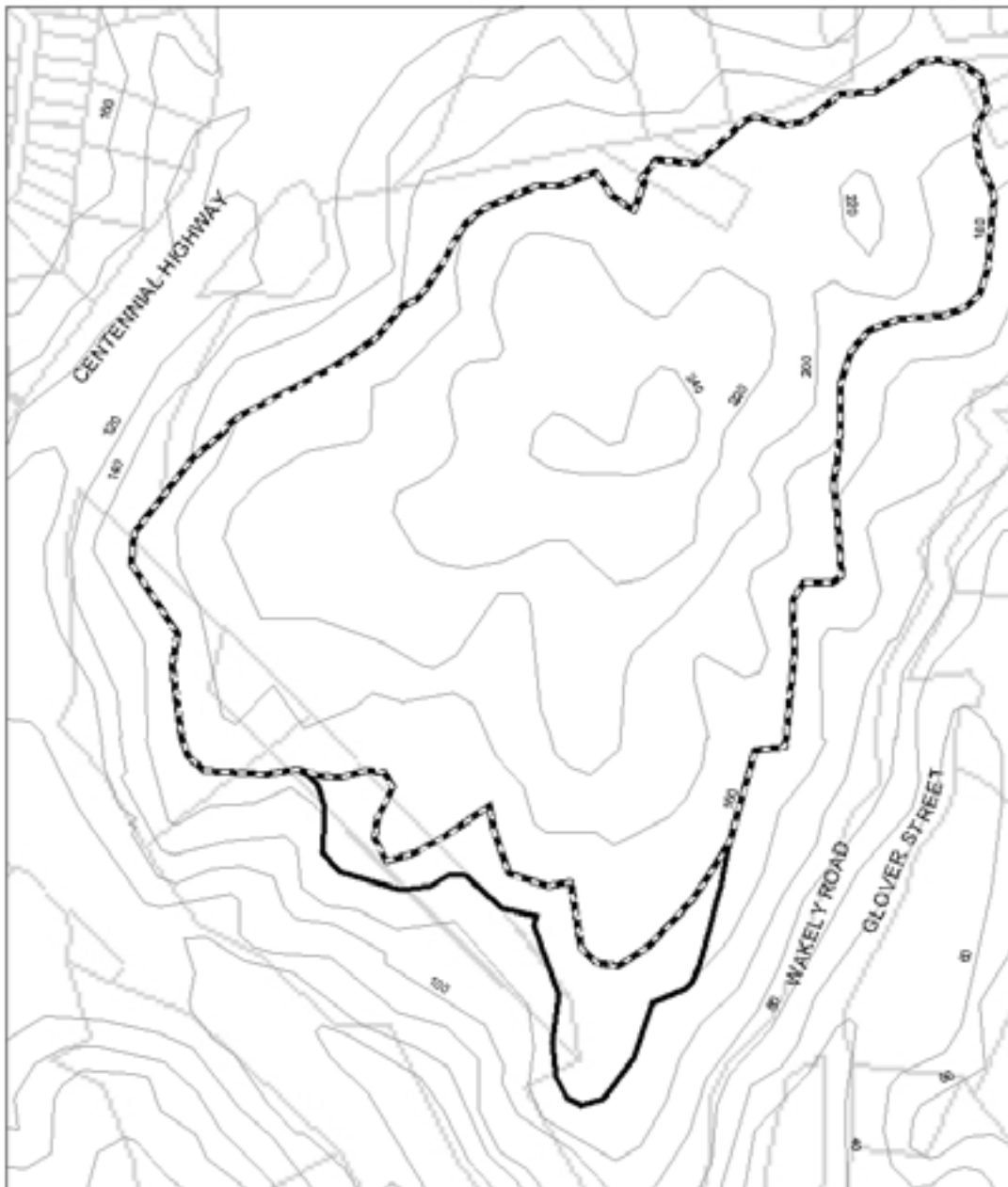
**PROPOSED DISTRICT PLAN CHANGE 33
DECISION OF HEARINGS COMMISSIONERS - RIDGELINES AND HILLTOPS
Submission 452 (West Tawa Developments Partnership)**



--- Overlay Line as decided by Hearings Commissioners
— Portion of the Plan Change 33 overlay as notified that is no longer included in the final overlay as decided by the Hearings Commissioners

1:2,000
N

PROPOSED DISTRICT PLAN CHANGE 33
DECISION OF HEARINGS COMMISSIONERS - RIDGELINES AND HILLTOPS
Submission 470 (Robin and Elizabeth Dunlop)

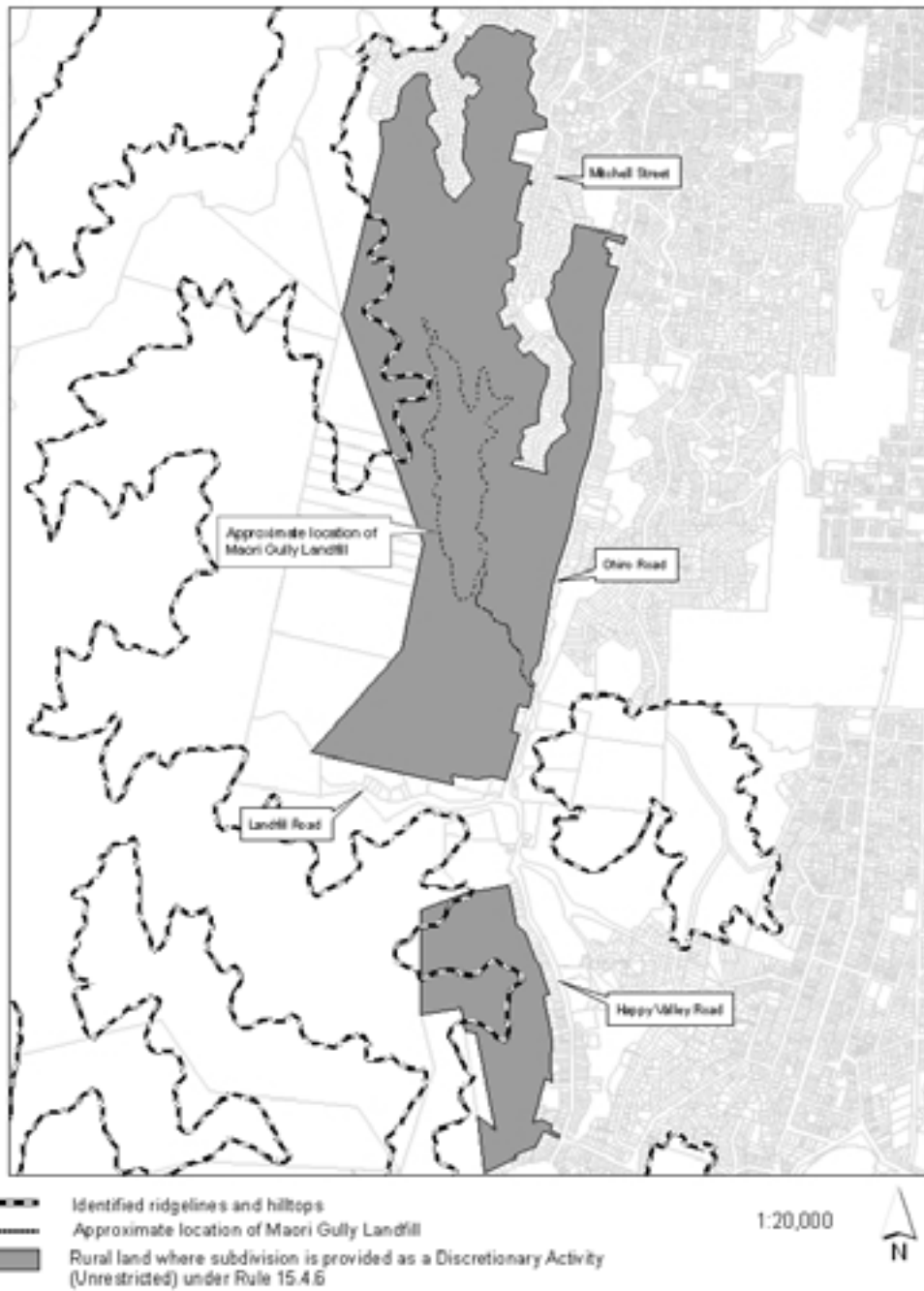


- Overlay Line as decided by Hearings Commissioners
- Portion of the Plan Change 33 overlay as notified that is no longer included in the final overlay as decided by the Hearings Commissioners

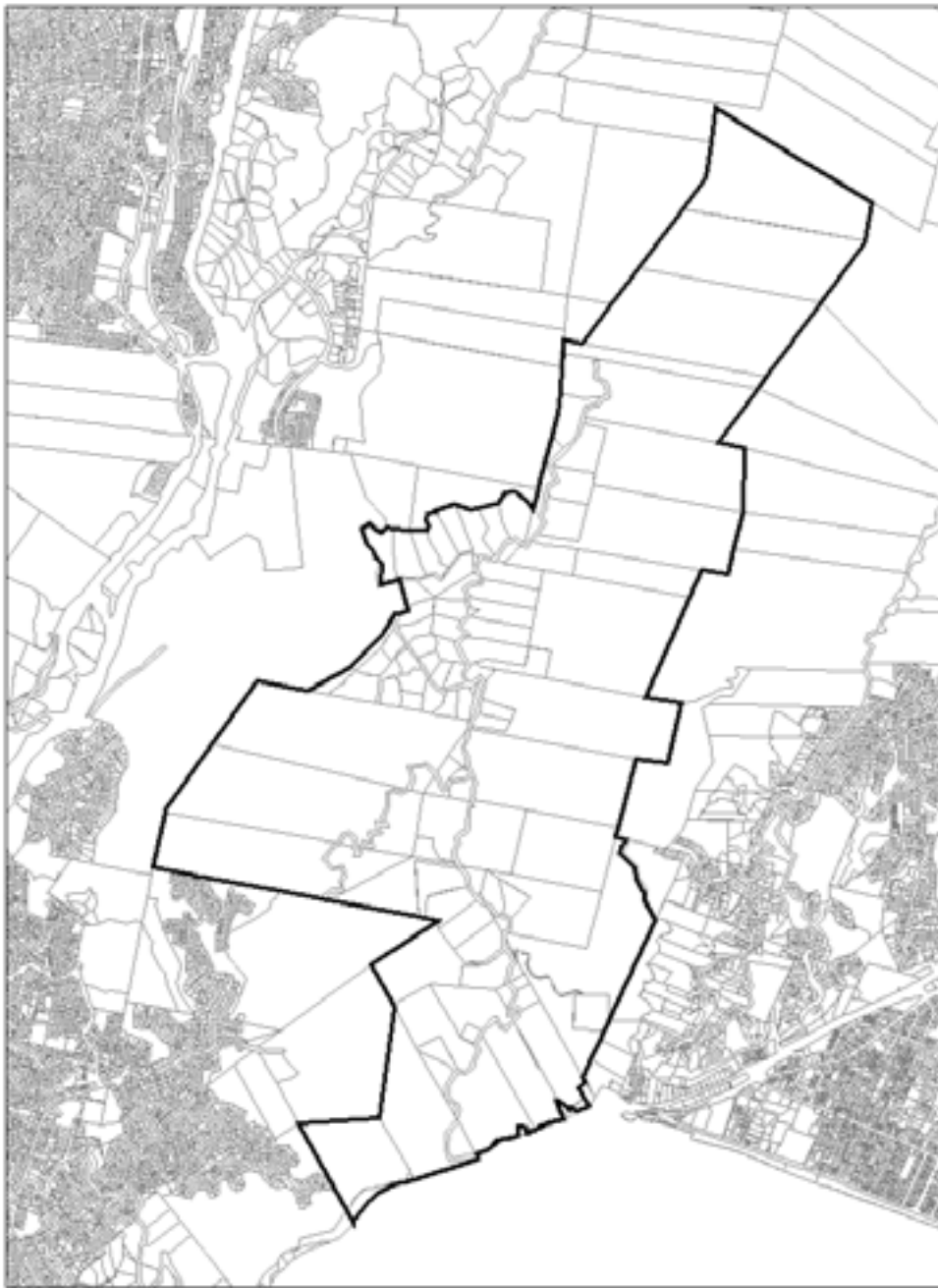


1:4,000

Appendix 4 - West of Ohiro Road and South of Panorama Heights,
Brooklyn - Area where subdivision rule 15.4.6 applies



Appendix 9 - Horokiwi Area where Rule 15.4.5 applies



 Boundary of area where Rule 15.4.5 applies

1:30,000



**Amendment to Appendix 6 to address Submission
by Wellington City Council (No. 211/14)**

