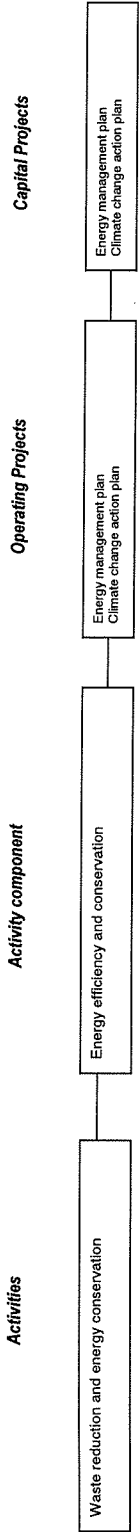


Climate Change and Energy



Key policies, plans and strategies
Climate Change Action Plan
Forest Sink Covenants
Carbon Management Policy
Energy Management Plan

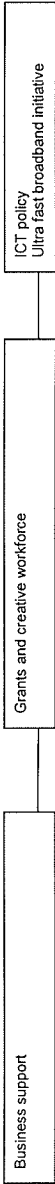
ICT

Capital Projects

Operating Projects

Activity component

Activity



Key policies, plans and strategies
ICT Policy
Ultra Fast Broadband Initiatives

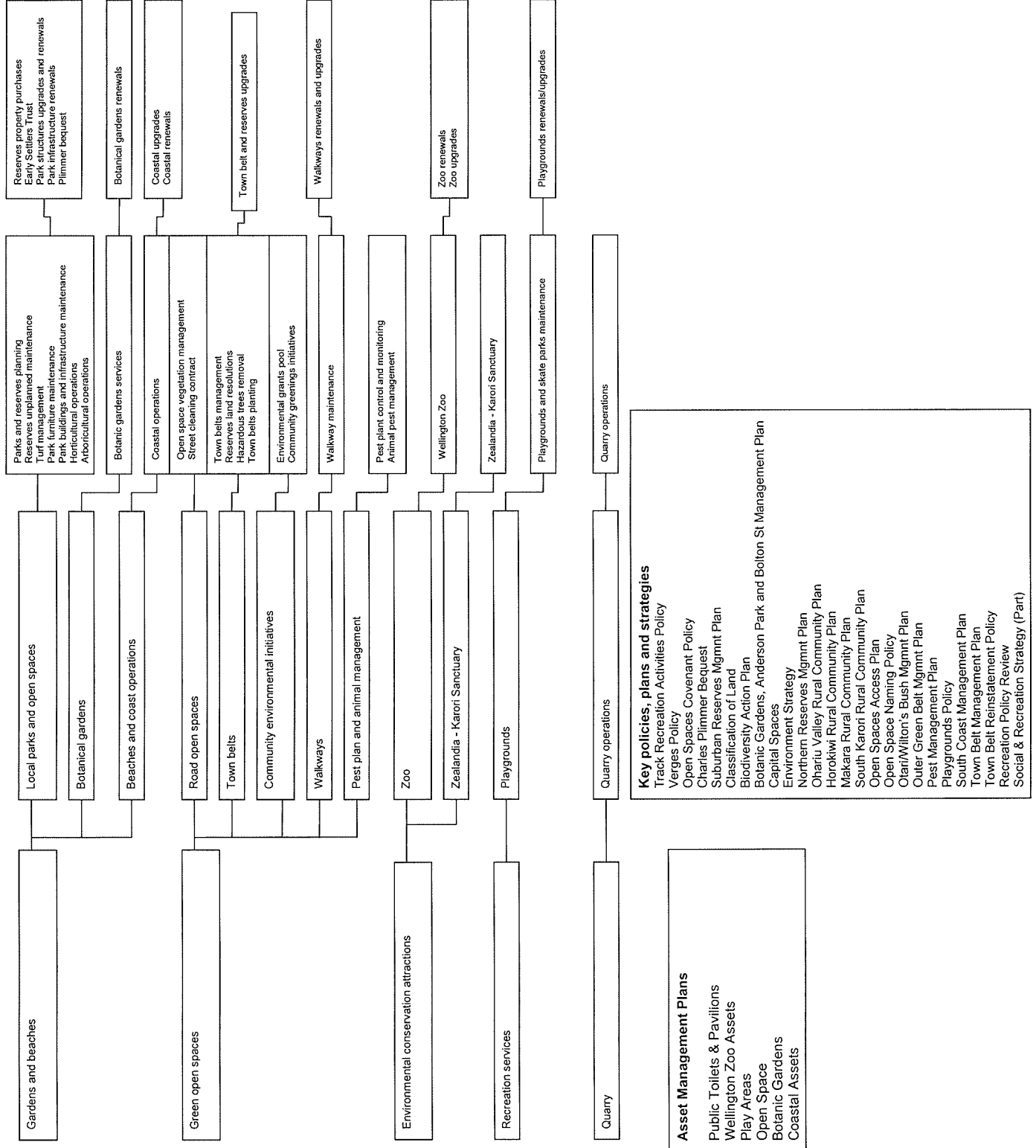
Biodiversity

Capital Projects

Operating Projects

Activity component

Activities



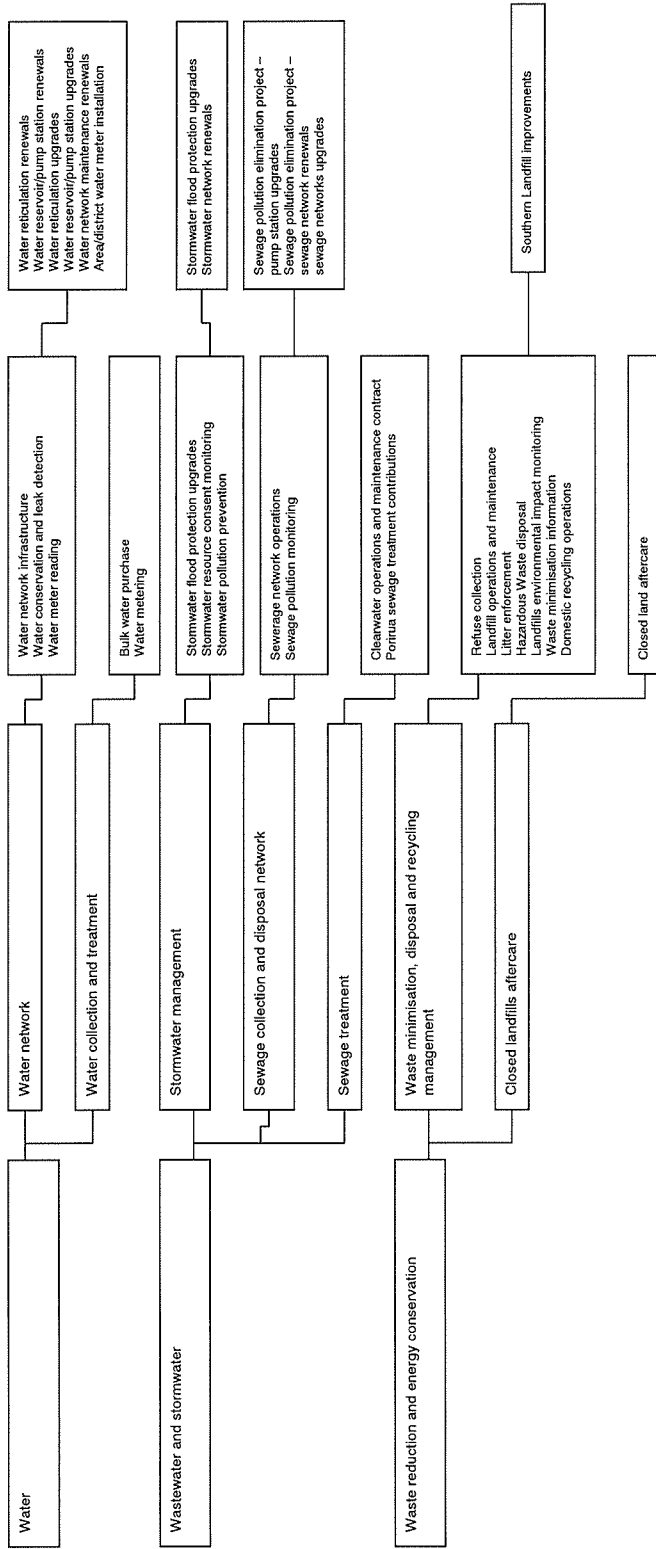
Three Waters and Waste

Capital Projects

Operating Projects

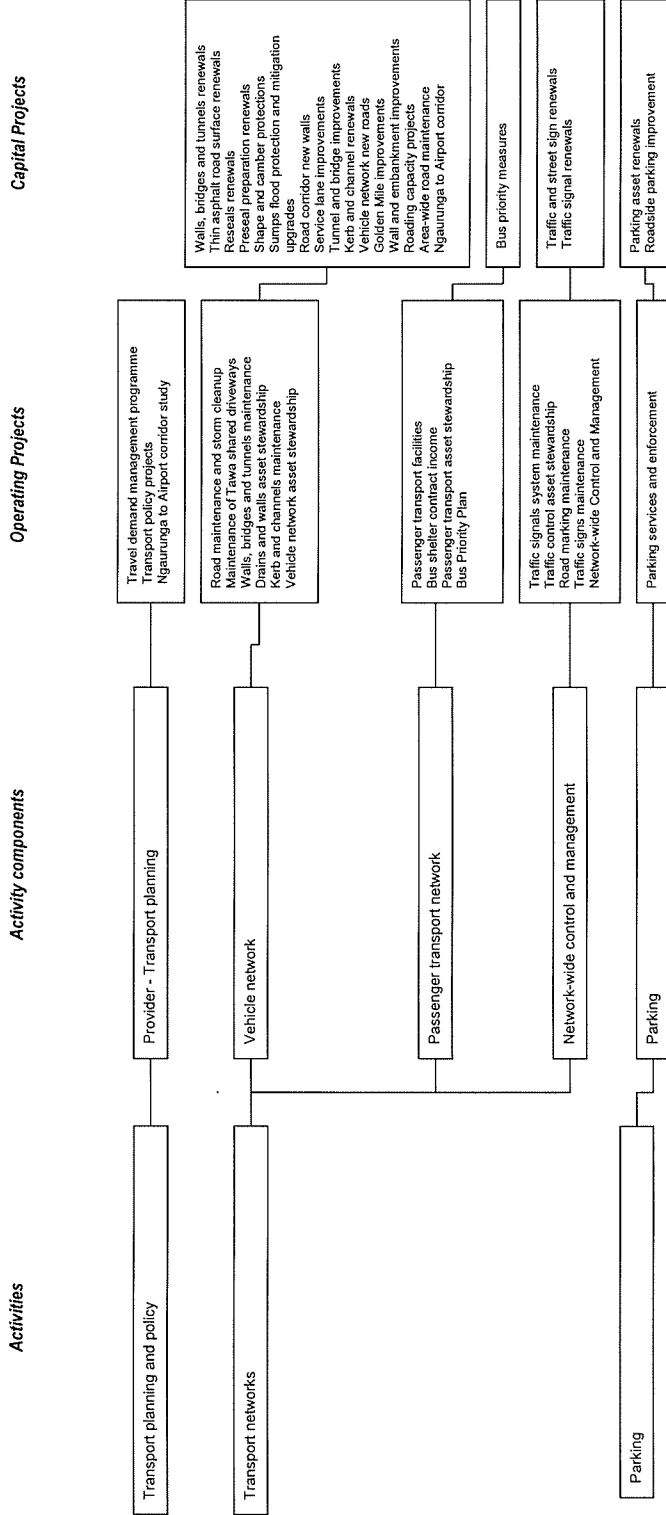
Activity component

Activities



- Key policies, plans and strategies**
- Water Services Bylaw
 - Waste Management Bylaw
 - Trade Waste Bylaw
 - Collection & Transportation of Waste Bylaw
 - Water & Sanitary Services
 - Closed Landfills Policy
 - Laterals Policy
 - Liquid Waste Management Plan
 - Solid Waste Management Plan
 - Inflow/Infiltration
 - Trade Waste Charges Policy
 - Water Conservation
 - Waste Minimisation
 - Recycling
 - WCCP-orirua Joint Landfill activities
 - Capacity Activities and Functions
 - Litter
- Asset Management Plans**
- Three Waters
 - Waste Management

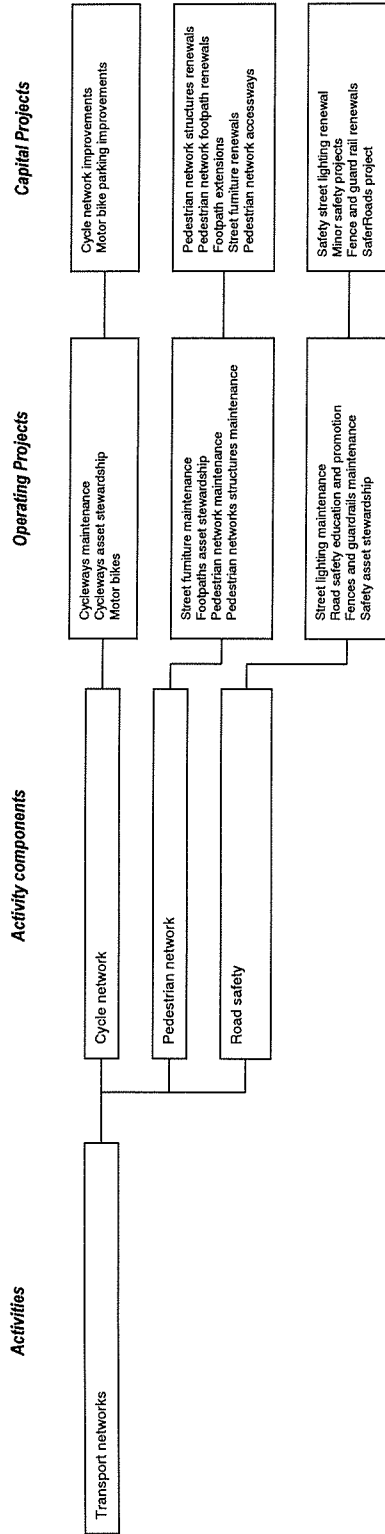
Transport (public transport and roading)



Asset Management Plans

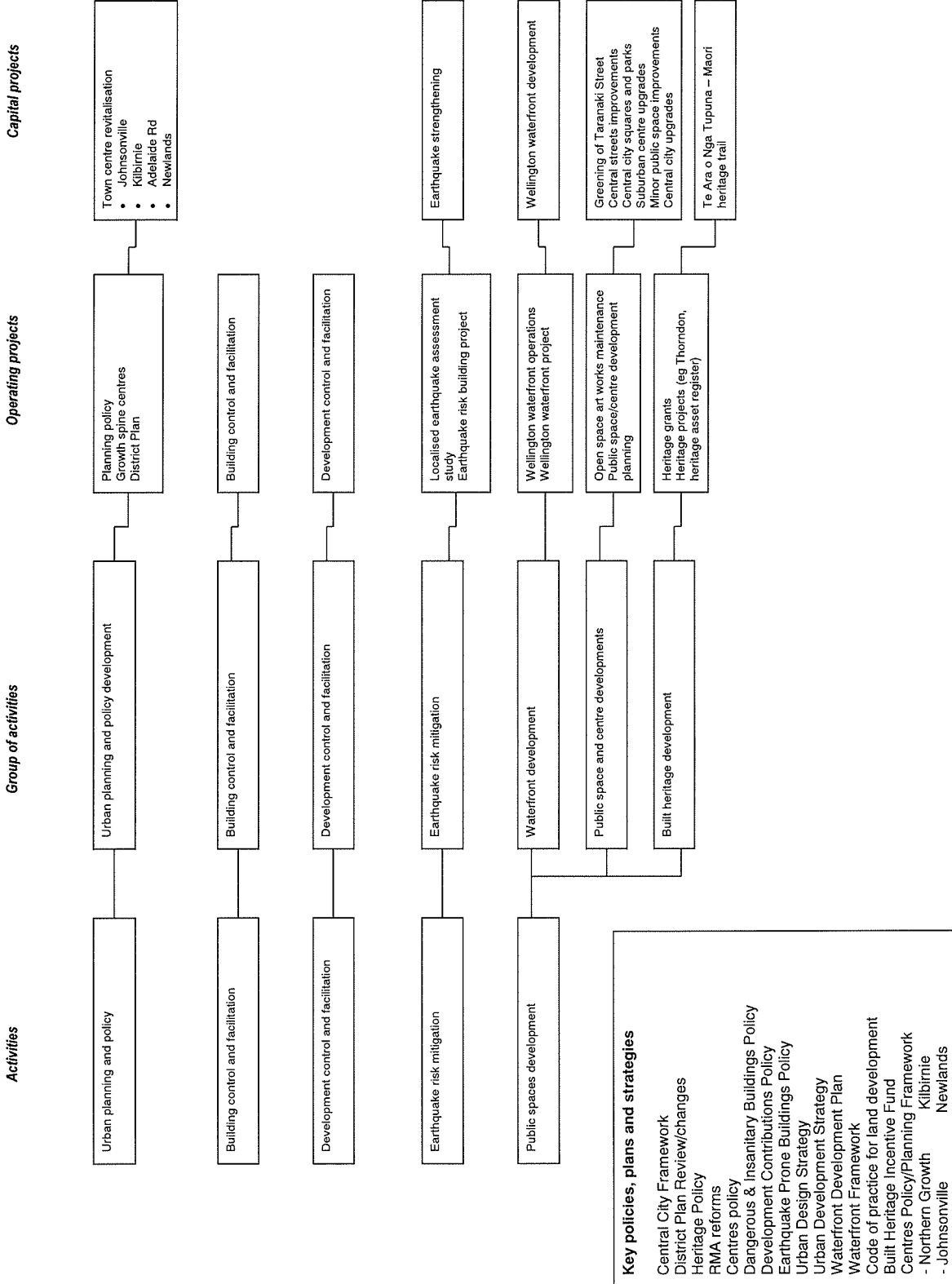
- Transport
- Key policies, plans and strategies**
- Parking Policy
- Road Encroachment & Sale Policy
- Road Naming Policy
- Transport Strategy
- Ngaurunga to Airport Corridor Plan
- Regional Land Transport Strategy
- Regional Public Transport Strategy
- Bus Priority Measures
- Manners Mall
- Basin Reserve Transport Improvements
- Traffic Bylaw
- Wellington City Public Transport Review (with GWRC)
- Regional Transport Strategy
- Travel Demand Management Plan

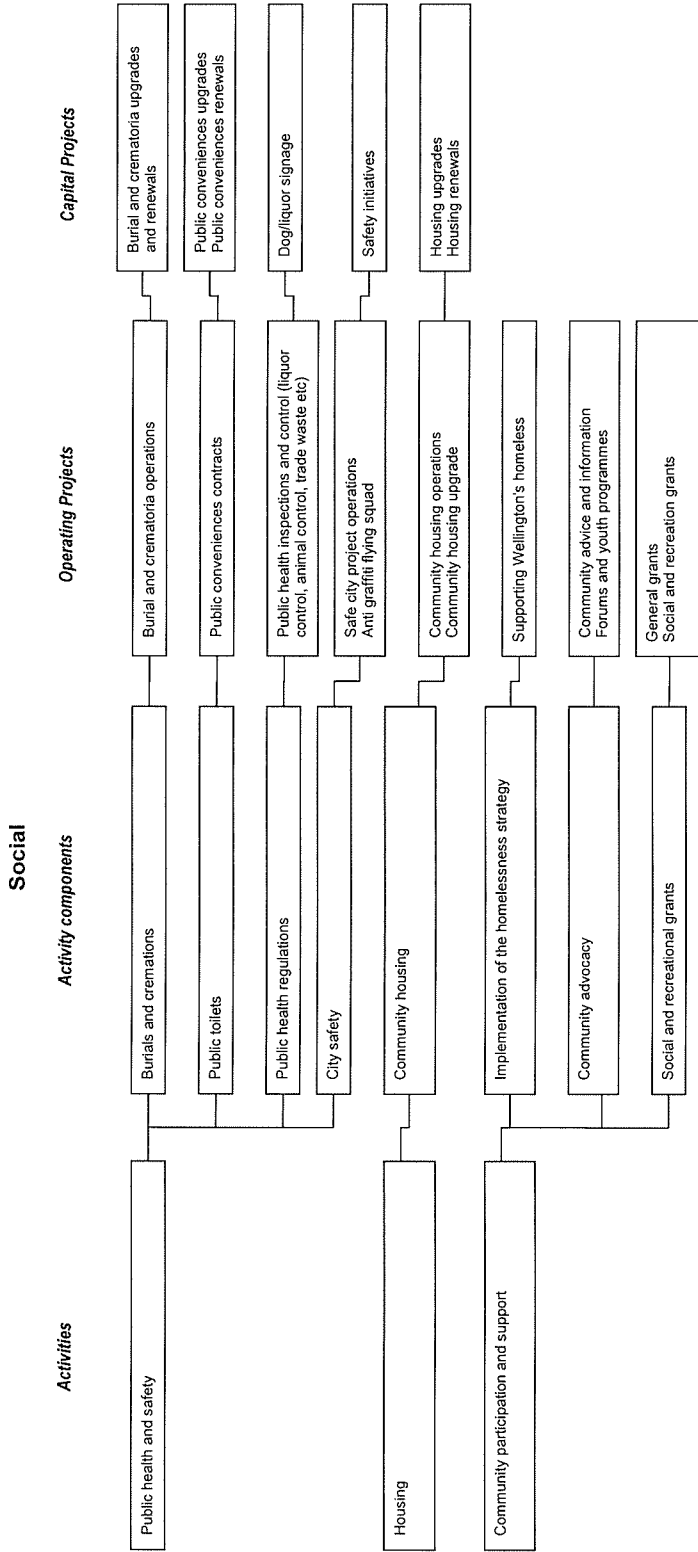
Walking, cycling, motorcycling and safety



- Key policies, plans and strategies**
- Cycling Policy
 - Footpath Management Policy
 - Walking Policy
 - Speed Limits
 - Speed Limits Bylaw
 - Regional Road Safety Plan
 - Asset Management Plan**
 - Transport

Built Environment





Key policies, plans and strategies

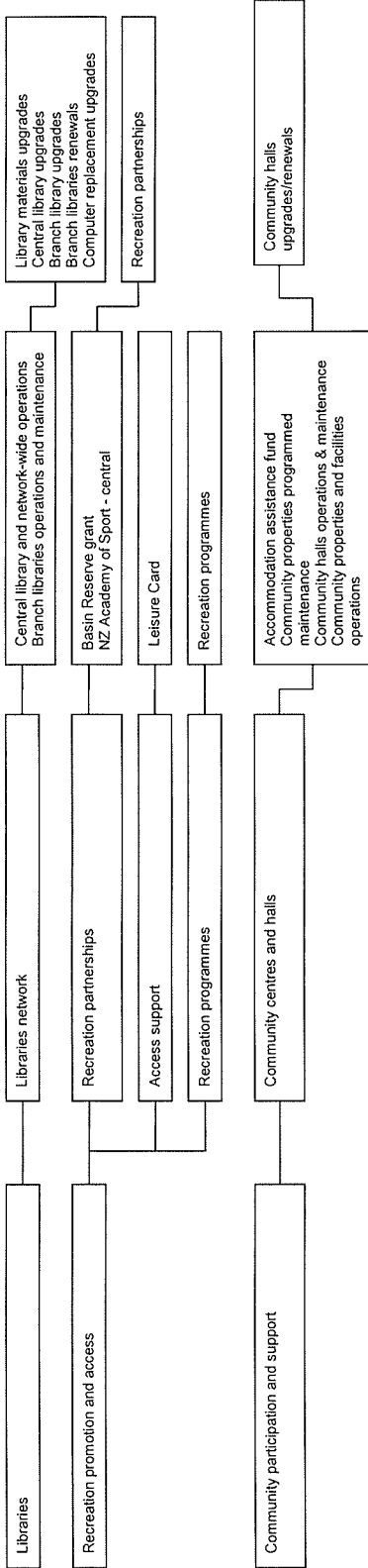
- Animals Bylaw
- Liquor Bylaw
- Local Public Health Bylaw
- Public Places Bylaw
- Alcohol Management Plan
- Betty Campbell Accommodation Assistance Fund
- Commemorative Policy
- Dog Policy
- Early Childhood Centres Policy
- Gambling Venues Policy
- Accessibility
- Diversity
- Homelessness Strategy
- Housing (Social Services) Policy
- Liquor Licensing Policy
- Mobility Parking Policy
- Older Person's Policy
- Public Convenience Policy
- Social & Recreation Strategy (Lead)
- Courtenay Place Project
- City Safety Initiatives

Asset Management Plans

- Public Toilets and Pavilions
- City Housing
- Cemetery

Community Facilities

Activities Activity components Operating Projects Capital Projects



Key policies, plans and strategies
 Leases Policy for Community & Recreational Groups
 Libraries Policy
 Passport to Leisure
 Community Facilities Policy (libraries & community centres)
Asset Management Plans
 Branch Library Properties
 Community Centres, Halls & Childcare Centres

Emergency Management

Activities

Public health and safety

Activity components

Emergency management

Operating Projects

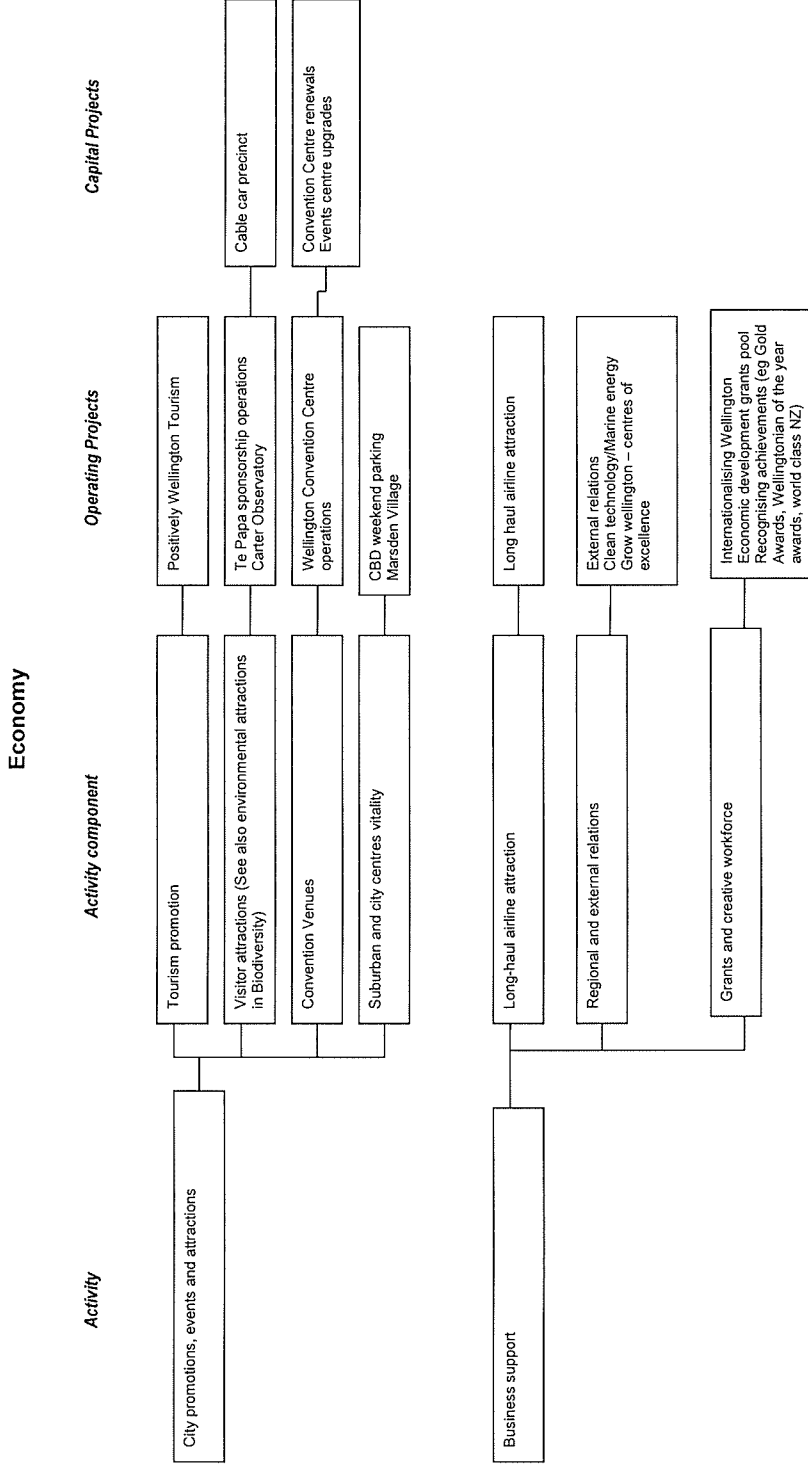
Emergency management operations
Rural fire management

Capital Projects

Emergency management renewals

Key policies, plans and strategies

- Fire Prevention Bylaw
- Regional WEMO Activities
- WEMO Volunteers Programme



- Key policies, plans and strategies**
- Casino Policy
 - Economic Development Strategy
 - International Relations Policy
 - Trading in Public Places Policy
 - Venues Governance
 - Review of Grow Wellington
 - Grow Wellington SOI
 - Economic Grants & Creative Workforce
- Asset Management Plans**
- Wellington Convention Centre
 - Civic & Commercial Property

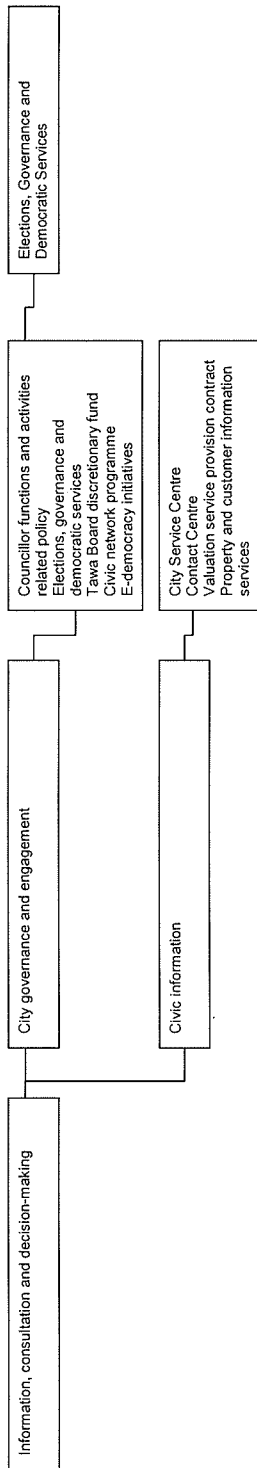
Governance

Capital Projects

Operating Projects

Activity component

Activities



- Key policies, plans and strategies**
- Elections Hoardings Policy
 - Governance Strategy
 - Representation review
 - Standing Orders
 - Governance Statement
 - Introduction Bylaw
 - Quarterly Report
 - CCO Governance matters

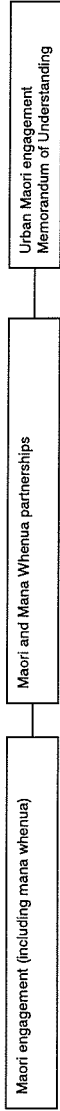
Community engagement

Capital Projects

Operating Projects

Activity component

Activities



Key policies, plans and strategies
Engagement Policy (incl. Consultation Policy
Advisory Groups (Roles & Responsibilities)
Access to Venues
Iwi Engagement
Volunteers

Note: This Portfolio will also apply to work across each of the other Portfolios

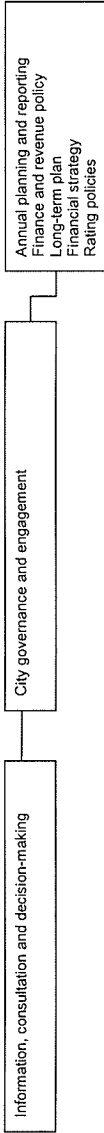
Finance

Capital Projects

Operating Projects

Activity component

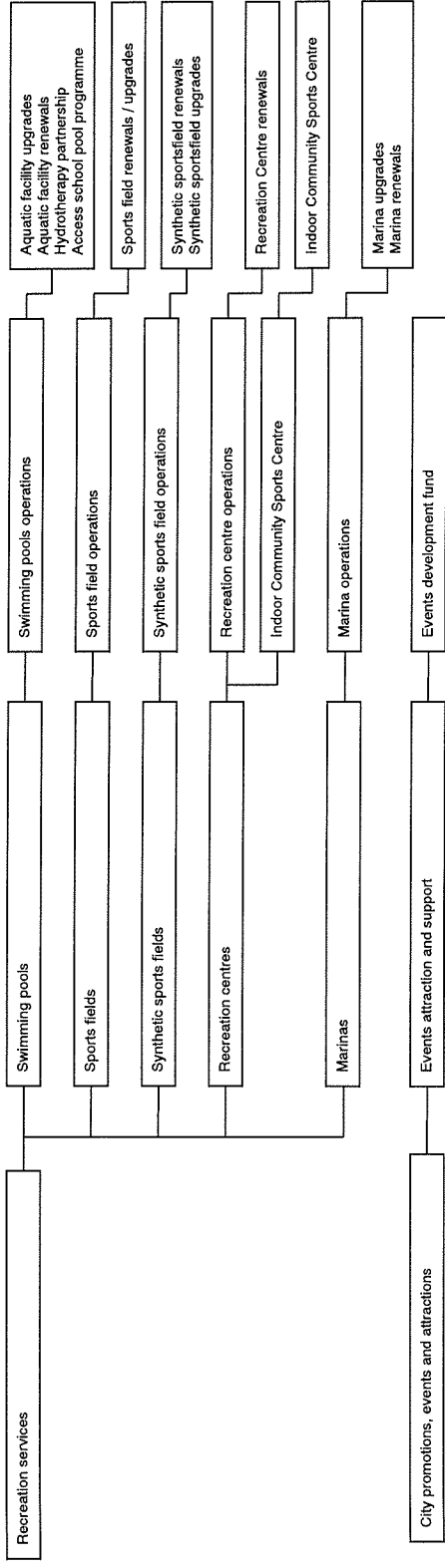
Activities



Key policies, plans and strategies

- Funding Impact Statement & Rating Policy
- Investment & Liability Policy
- Rates Postponement Policy
- Rates Remission Policy
- Revenue & Financing Policy
- Significance Policy
- Financial Strategy (proposed under Local Government Act Amendment – Transparency, Accountability and Fiscal Management (TAFM))

Sport and Events



- Key policies, plans and strategies**
- Social & Recreation Strategy (part)
 - Circuses Policy
 - Community Facilities (pools)
 - School Partnership Programme
 - Partnership Investment in Artificials
 - Aquatic Facilities – sessionalisation
 - Events Development Fund
 - Events Policy
- Asset Management Plans**
- Coastal Assets
 - Swimming Pools
 - Recreation Centres
 - Sportsfields

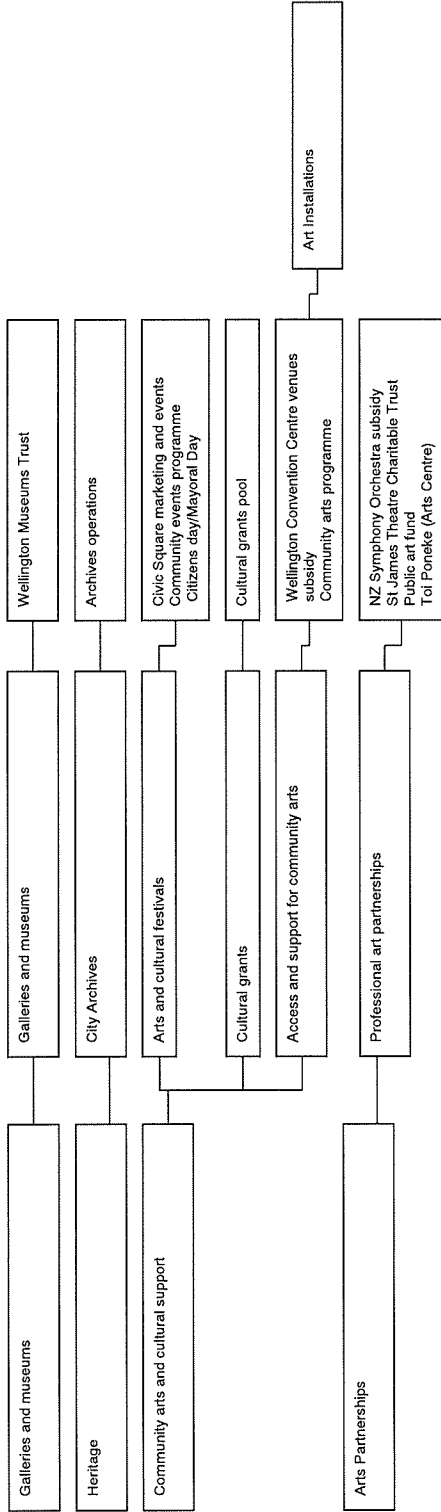
Arts and Culture

Capital Projects

Operating Projects

Activity components

Activities



Asset Management Plans
 Public Art & Memorials

Key policies, plans and strategies
 Cultural Wellbeing Strategy
 Furnishings Art Collection Policy
 Museums Policy
 Public Art Policy
 Street Performance & Busking Policy
 Arts Strategy