

**Absolutely Positively  
Wellington City Council**

Me Heke Ki Pōneke

# Ordinary Meeting of Tawa Community Board

## Ngā meneti | Minutes

7.00pm Monday Rāhina, 21 August Here-turi-kōkā 2023

Tawa Community Centre

5 Cambridge Street

Tawa

Pōneke | Wellington



**PRESENT**

Rachel Allan  
Tim Davin (Deputy Chair)  
Jill Day (Chair)  
Jackson Lacy  
Councillor McNulty  
Miriam Moore  
Councillor Randle

**IN ATTENDANCE**

Councillor Wi Neera

# **TABLE OF CONTENTS**

## **21 AUGUST 2023**

---

<b>Business</b>	<b>Page No.</b>
<b>1. Meeting Conduct</b>	<b>5</b>
<b>1.1 Karakia</b>	<b>5</b>
<b>1.2 Apologies</b>	<b>5</b>
<b>1.3 Conflict of Interest Declarations</b>	<b>5</b>
<b>1.4 Confirmation of Minutes</b>	<b>5</b>
<b>1.5 Tawa Community Board Service Award</b>	<b>5</b>
<b>1.6 Public Participation</b>	<b>5</b>
<b>1.7 Items not on the Agenda</b>	<b>5</b>
<b>2. Oral Reports</b>	<b>6</b>
<b>2.1 Oral Updates</b>	<b>6</b>
<b>3. Reports</b>	<b>6</b>
<b>3.1 Transport &amp; Infrastructure Report</b>	<b>6</b>
<b>3.2 Resource consents applications and approvals for 1         June 2023 to 2 August 2023</b>	<b>7</b>
<b>3.3 Tawa Community Board Discretionary Fund - Monthly         Allocations 2022/23</b>	<b>7</b>
<b>3.4 Current and Upcoming Consultations and Engagements</b>	<b>7</b>
<b>3.5 Actions Tracking</b>	<b>8</b>
<b>3.6 Forward Programme</b>	<b>9</b>



# 1 Meeting Conduct

---

## 1.1 Karakia

The Chairperson opened the meeting at 7.03pm with the following Karakia:

<b>Kia hora te marino</b>	May peace be widespread.
<b>Kia whakapapa pounamu te moana</b>	May the sea be like greenstone;
<b>Hei huarahi mā tatou I te rangi nei</b>	a pathway for all of us this day.
<b>Aroha atu, aroha mai</b>	Let us show respect for each other,
<b>Tātou i a tātou katoa.</b>	love for one another.

## 1.2 Apologies

**Moved Jill Day, seconded Rachel Allan**

### **Resolved**

That the Tawa Community Board:

1. Accept the apologies received from Councillor McNulty for absence and Councillor Randle for lateness.

**Carried**

## 1.3 Conflict of Interest Declarations

No conflicts of interest were declared.

## 1.4 Confirmation of Minutes

**Moved Jill Day, seconded Miriam Moore**

### **Resolved**

That the Tawa Community Board:

1. Approves the minutes of the Tawa Community Board Meeting held on 26 June 2023, having been circulated, that they be taken as read and confirmed as an accurate record of that meeting.

**Carried**

## 1.5 Tawa Community Board Service Award

There was no service award recipient.

## 1.6 Public Participation

There were no requests for public participation.

## 1.7 Items not on the Agenda

There were no items not on the agenda.

---

## 2. Oral Reports

---

- ~~Fire update~~
- ~~GWRC councillors' update~~
- Tawa Members' update
- Councillors' update

### 2.1 Oral Updates

**Moved Rachel Allan, seconded Jackson Lacy**

#### **Resolved**

That the Tawa Community Board:

1. Receive the information.

**Carried**

#### **Attachments**

- 1 Takapu Island Crossing Concerns

**Secretarial note:** Jill Day tabled email correspondence from a constituent regarding Takapu Road, island crossing (see attachment 1).

---

## 3. Reports

---

**Secretarial note:** The hui adjourned at 8.10pm and resumed at 8.17pm with the following members present: Jill Day, Tim Davin, Rachel Allan, Miriam Moore and Councillor Randle.

### 3.1 Transport & Infrastructure Report

**Moved Jill Day, seconded Miriam Moore**

#### **Resolved**

That the Tawa Community Board:

1. Receive the information.

**Carried**

(Jackson Lacy joined the hui at 8.19pm)

### 3.2 Resource consents applications and approvals for 1 June 2023 to 2 August 2023

Moved Jill Day, seconded Miriam Moore

#### Resolved

That the Tawa Community Board:

1. Receive the information.

Carried

### 3.3 Tawa Community Board Discretionary Fund - Monthly Allocations 2022/23

Moved Miriam Moore, seconded Rachel Allan

#### Resolved

That the Tawa Community Board:

1. Receive the information.
2. Agree to spend \$100 on a prezzy card for Emma McInnes to acknowledge her work on the poster for the Tawa Community Board Community Facilities submission.

Carried

**Secretarial note:** With the leave of the meeting, the motion was moved with changes as marked in red.

### 3.4 Current and Upcoming Consultations and Engagements

Moved Tim Davin, seconded Jackson Lacy

#### Resolved

Officers recommend the following motion

That the Tawa Community Board:

1. Receive the information.
2. Note that TR113-23 relates to Tawa Street rather than Tawa Terrace.

Carried

**Secretarial note:** With the leave of the meeting, the motion was moved with changes as marked in red.

### 3.5 Actions Tracking

#	Date	Meeting	Report	Clause	Status	Comment
1	Monday 20 March 2023	Tawa Community Board	New Ground Lease for Existing Lese: Tawa Squash Rackets Club Incorporated	1) Receive the information	Complete	The board formally received the information.
2	Monday 20 March 2023	Tawa Community Board	New Ground Lease for Existing Lese: Tawa Squash Rackets Club Incorporated	2) Receive the information	In progress	Lease application process underway.
3	Monday 20 March 2023	Tawa Community Board	New Ground Lease for Existing Lese: Tawa Squash Rackets Club Incorporated	3) Receive the information	Complete	
4	Monday 20 March 2023	Tawa Community Board	New Ground Lease for Existing Lese: Tawa Squash Rackets Club Incorporated	4) Receive the information	Complete	The lessee has been notified of their obligations.
5	Monday 26 June 2023	Tawa Community Board	3.1 Proposed Road Closure	1) Receive the information	Complete	The board formally received the information.
6	Monday 26 June 2023	Tawa Community Board	3.1 Proposed Road Closure	2) Agree to close Main Road Tawa between Lyndhurst Road intersection and Surrey Street roundabout to vehicles and cyclists including motorised scooters on Saturday 28 October 2023 between 6.00pm 5.00am and 5.00 pm. This road closure is required for the Spring into Tawa event.	In progress	
7	Monday 26 June 2023	Tawa Community Board	3.1 Proposed Road Closure	3) Note that recommendations in this report should only be amended after further consultation with affected parties and verification from the Council's Traffic Engineer that the amendment is not likely to cause unreasonable impact to traffic movements.	Complete	

**Moved Jill Day, seconded Miriam Moore**

**Resolved**

That the Tawa Community Board:

1. Receive the information.

**Carried**



### **3.6 Forward Programme**

#### **September 2023**

Oral reports:

- Fire Update
- Police Update (tbc)
- Tawa Members' update (standing item)
- Councillors' update (standing item)

Written Reports:

- Resource Consent Applications and Approvals Report (standing item)
- Upcoming Areas of Consultation, Engagement or Surveys (if any)
- Tawa Community Board Discretionary Fund update (standing item)
- Actions Tracking (standing item)
- Forward Programme (standing item)

#### **October 2023**

Oral reports:

- Police Update
- Tawa Residents Association update (tbc)
- Tawa Members' update (standing item)
- Councillors' update (standing item)

Written Reports:

- Resource Consent Applications and Approvals Report (standing item)
- Upcoming Areas of Consultation, Engagement or Surveys (if any)
- Tawa Community Board Discretionary Fund update (standing item)
- Actions Tracking (standing item)
- Forward Programme (standing item)

#### **November 2023**

Oral reports:

- Fire Update (tbc)
- Tawa Residents Association update
- Tawa Members' update (standing item)
- Councillors' update (standing item)

Written Reports:

- Resource Consent Applications and Approvals Report (standing item)
- Upcoming Areas of Consultation, Engagement or Surveys (if any)
- Tawa Community Board Discretionary Fund update (standing item)
- Actions Tracking (standing item)

**Moved Jill Day, seconded Tim Davin**

#### **Resolved**

That the Tawa Community Board:

1. Receive the information.
2. Approve the work programme subject to any alterations, additions or deletions deemed necessary.

**Carried**

The meeting concluded at 9.05pm with the reading of the following karakia:

**Kia whakairia te tapu**  
**Kia wātea ai te ara**  
**Kia turuki whakataha ai**  
**Kia turuki whakataha ai**  
**Haumi e. Hui e. Tāiki e!**

Restrictions are moved aside,  
so the pathway is clear to return to  
everyday activities.  
Let us be united.

Authenticated: \_\_\_\_\_  
Chair

---

# Ordinary Meeting of Tawa Community Board

## Minute item attachments

7.00pm Monday, 21 August 2023  
Tawa Community Centre  
5 Cambridge Street  
Tawa  
Wellington

---

### Business

Page No.

---

#### 2.1 Oral Updates

1. Takapu Island Crossing Concerns

2

14 August 2023

Attention: Traffic resolutions team  
Wellington City Council  
PO Box 2199  
Wellington 6140

To whom it may concern,

**Takapu Island Crossing Concerns**

We are writing to you as residents of Willowbank Heights (Ara Paiwhneua) in Tawa, an 83-unit development that has been partially completed since February. Many of us moved in in February, some in July and newer stages still under-going completion will move in from late-August and beyond. As 2–3-bedroom units, we comprise of mostly young professionals and families.

This site was perfect for intensive residential development, and we are very fortunate in our location. We live next door to the supermarket and only 3-5 minutes' walk from Willowbank Reserve and Takapu Road station – from where most of our residents catch a train into work daily. However, we feel there are significant safety risks and delays crossing the road to and from Takapu Island (on Takapu Road), which disconnects our residents on the southern side of Takapu Road from other parts of the Tawa Community (**Figure 1, Figure 2**).

We are writing to **request a raised pedestrian crossing is installed** to enable us to cross this road safely and timely. Our reasons and evidence are outlined below:

- Safety from speeding vehicles

Since moving in, there have been three known accidents at this roundabout from speeding vehicles. Two of these have gone into the pedestrian refuge area. One was in May, two were in July (**Figure 3, Figure 4, Figure 5, Figure 6**). It is evident that the road design encourages cars to speed at this point causing these incidents. Notably, the roundabout is less than 150 m from the off-ramp from State Highway 1 (100 km/h zone) and is the main access road into the southern boundary of Tawa. We are concerned one of these incidents could happen while one of our residents is waiting at the crossing, and have many parents concerned about their rangatahi who walk or cycle to Tawa College on their own.
- Visibility of vehicles

At morning peak commuting times, traffic is backed up headed west into Tawa. While this makes it easier to cross to the refuge, pedestrians crossing the road northbound at Takapu Road cannot see oncoming vehicles headed east (**Figure 7**). In this situation pedestrians must run and hope a car is not speeding. We have multiple families in our development with children and pushchairs for whom this is not an option.
- Long wait times

When traffic isn't backed up, the stream of cars headed west into Tawa is constant. This is particularly problematic in weekends and residents have stood at the crossing for long periods and watched their train come and go. Pedestrians may also be more likely to cross at unsafe times due this which increases the potential for an accident to occur.
- More vehicles and pedestrians are expected

Our development also includes a commercial business park, Takapu Rise, opening later this month, with over 60 units including amenities such as a café and hairdresser. It is expected this will bring more car traffic to Takapu Island, but also more pedestrians to the area (locals and those using the train). This will only increase the conflict between pedestrians and vehicular traffic, worsening safety and increasing delay.

5. Improved connectivity and increased active transport

As noted above, we feel that residents located south of Takapu Road are disconnected from the wider Tawa community. Adding a safe crossing will provide for this connection. Not only will this improve safety for residents that currently rely on pedestrian access, it will also encourage additional residents to utilise active modes of transport, which aligns with Wellington City Councils strategic direction<sup>1</sup> The supermarket (Countdown) is also only one of two supermarkets<sup>2</sup> that service the Tawa Community. Many of the Tawa's residents, particularly in its southern extent, rely on Countdown as their preferred supermarket. In the absence of any safe crossing point to access this Countdown, most local residents are forced to rely on a private vehicle to access the supermarket where they may choose to walk if conditions allowed. If Council is enabling more housing based on proximity and location, it is its duty to ensure integrated planning responses that allow for these residents to safely live in these locations.

6. A pedestrian crossing will not impact the safe and efficient operation of the roading network

We understand there is a need to maintain the safe and efficient operation of a roading network and that a pedestrian crossing may impact this. The location of the pedestrian crossing is located at least 60 m of sight distance from any direction a vehicle would be travelling. We understand that this aligns with the Wellington City Councils minimum stopping distances<sup>3</sup>. Further to this, vehicles travelling from the east, which would have the shortest sight distance, are unlikely to be travelling up to the 50 km/h as they would have recently exited the Willowbank Road roundabout. It may also be anticipated that the pedestrian crossing will improve traffic safety by drivers being actively aware of the crossing and are less likely to speed through the roundabout. In relation to the efficiency, it is unlikely that a crossing will cause any noticeable delays. The crossing is located between several give ways and roundabouts where vehicle slowing and stopping is not uncommon. Any additional stopping will cause only temporary and localised delays.

While we understand there are longer-term plans to upgrade the Takapu Bridge area, we believe a small, interim intervention of a raised pedestrian priority crossing would have significant safety benefits that are needed urgently.

We welcome any of your staff to come and visit the crossing with us. We are also happy to discuss our concerns further with your staff.

Ngā mihi nui,

Hannah Mundell

Body Corporate Chairperson

Willowbank Heights Body Corp, on behalf of our residents.

---

<sup>1</sup> Climate change mitigation through reducing

<sup>2</sup> New World which is located in the Tawa Town Centre

<sup>3</sup> Table 2 of Wellington City Council Code of Practice for Land Development

References:

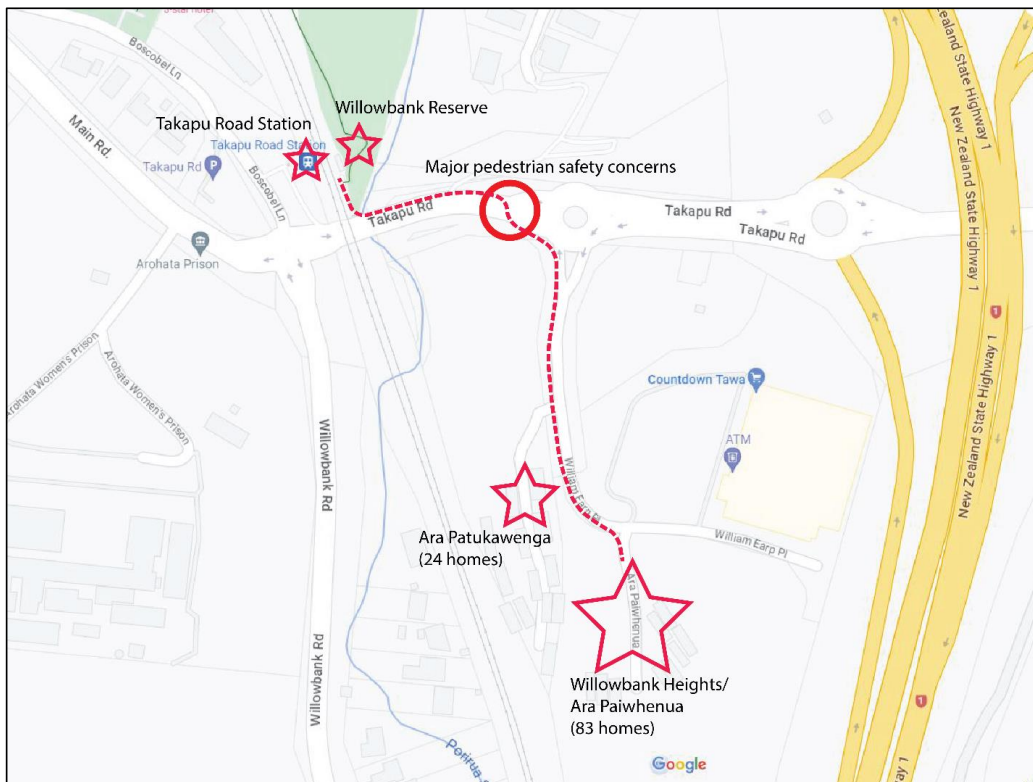


Figure 1: Map of community, local connections and crossing of concern at Takapu Road



Figure 2: The key pedestrian crossing on Takapu Road of concern



Figure 3: Sign knocked down following an accident on the pedestrian refuge in May 2023

Item 2.1 Attachment 1

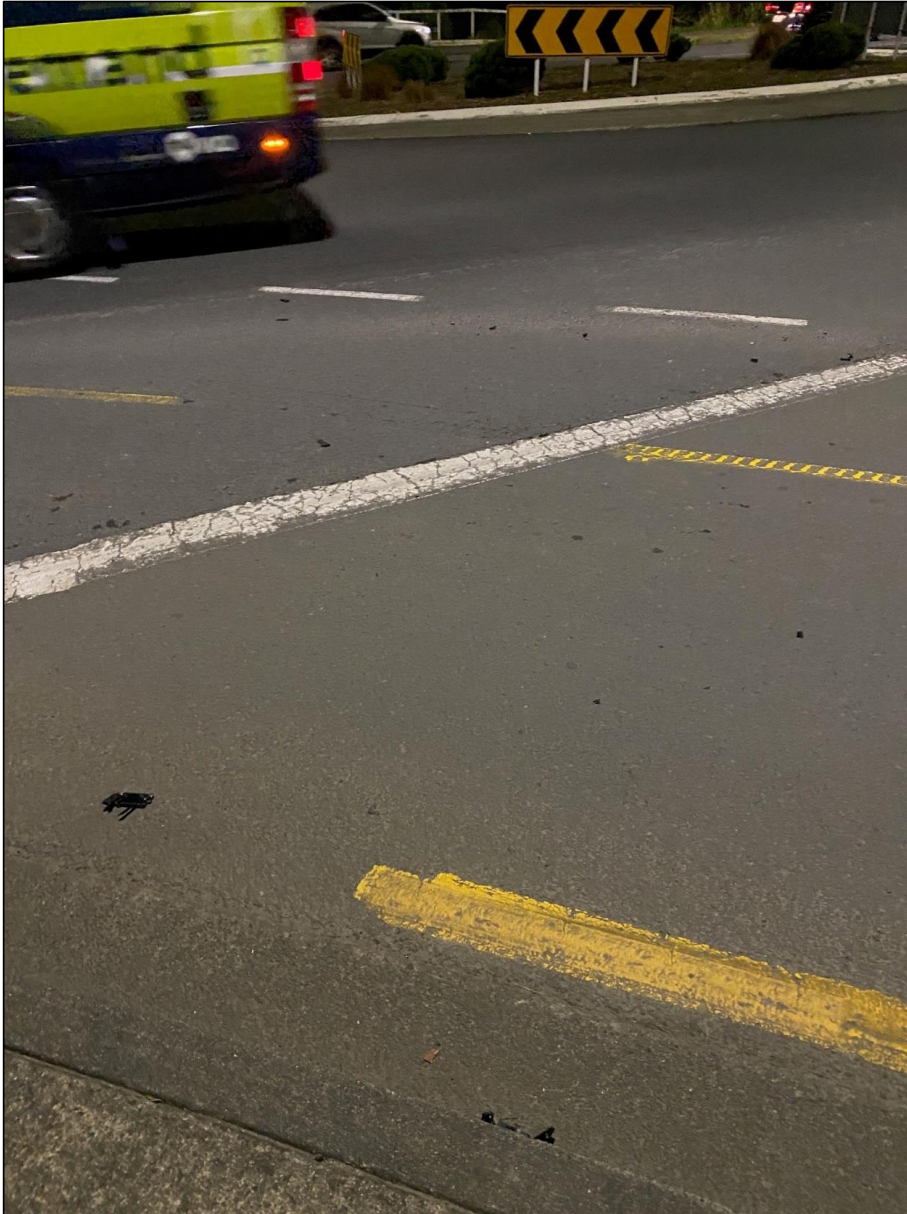


Figure 4: Vehicle debris following an accident on the corner of William Earp Place on or about July 19<sup>th</sup> 2023.





Figure 5: Smashed glass following an accident on or about July 23<sup>rd</sup> 2023.

Item 2.1 Attachment 1



Figure 6: Another sign knocked down following an accident on or about July 23<sup>rd</sup> 2023



Figure 7: No visibility of oncoming vehicles at peak traffic times