

---

**ORDINARY MEETING**

**OF**

**MAKARA/OHARIU COMMUNITY BOARD**

**MINUTE ITEM ATTACHMENTS**

Time: 7.30pm  
Date: Thursday, 3 December 2015  
Venue: Ohariu Valley Hall  
550 Ohariu Valley Road  
Ohariu Valley  
Wellington

---

**Business**

**Page No.**

---

**2.1 Annual Plan**

1. 2016/2017 Annual Plan 2

**2.2 Community Plan**

1. Makara-Ohariu Community Plan 9

**2016/17 Annual Plan**

---

**Makara Ohariu Community Board**  
24 November 2015

Absolutely Positively  
Wellington City Council  
Me Heke Ki Pōneke

**Why I am here**

To advise you of the process for developing the  
**2016/17 Annual Plan**

- Give you an early “Heads Up”
- Engage with you as an extension of the Council
- Before Annual Plan website goes live in early December

---

Absolutely Positively  
Wellington City Council  
Me Heke Ki Pōneke

12/01/2016

## ***Why should you care?***

- Opportunity for you to participate in the process
  - Help you influence the outcome
- Opportunity to help your networks input into process
  - Help them influence the outcome
- *Opportunity to articulate the views and needs of your community/area of interest*
- *Help make the final AP more representative of Wellingtonians' needs*

Absolutely Positively  
Wellington City Council  
Me Heke Ki Pōneke

## **WCC Annual Plan**

### **It is a statutory requirement**

- Outlines the services, projects and expenditure of WCC
  - Key operational planning document
- Development must follow a given process
  - Provide opportunity for community input based on a consultation document
- Must be completed each year
  - So rates can be set and the WCC work programme can progress
- *The Annual Plan is a 'must do'*

Absolutely Positively  
Wellington City Council  
Me Heke Ki Pōneke

12/01/2016

## WCC Annual Plan #2

### Annual Plans give effect to a Long-term Plan (LTP)

- 2016/17 is year 2 of the 2015-25 LTP
- The 2015-25 LTP identified 2 areas for investment
  - Investing for economic growth
    - Programme of major projects
  - Investing to maintain and improve services
    - Resilient infrastructure
    - Efficient transport

➤ *The Annual Plan is about investing in the future of Wellington*

Absolutely Positively  
Wellington City Council  
Me Heke Ki Pōneke

## WCC Annual Plan #3

### Annual Plans allocate resources

- Majority of what's to be done already defined in LTP
  - Expenditure and rates levels have been set
- Any variation to the LTP needs to be consulted on
  - Identified in the consultation document
- Council has agreed to consider new initiatives for 2016/17

➤ *The Annual Plan is not a completely 'done deal'*

Absolutely Positively  
Wellington City Council  
Me Heke Ki Pōneke

12/01/2016

## Pre-engagement

- Happening now
- Key things on the go
  - Development of the Annual Plan website
  - Development of an engagement and consultation plan and communications strategy
  - Design of the panel hearings process
- Opportunity for you to help us
  - Promoting Annual Plan process
  - Providing feedback – online or directly
  - Participate in the panel hearing process
  - Advice on engagement and consultation process

Absolutely Positively  
Wellington City Council  
Me Heke Ki Pōneke

## Panel hearings

- To be held on 2 Feb 2016
- Councillors will consider new initiative bids received
  - Template will be developed for initiatives and put on AP website
  - You can submit proposals too
- Criteria for assessing initiatives from LTP
  - Investing in projects that grow the economy
  - Increasing use of existing assets
  - Investing to maintain and improve existing services
  - Improve asset management practices
  - Achieve ongoing efficiencies

Absolutely Positively  
Wellington City Council  
Me Heke Ki Pōneke

## Consultation Document (CD)

- Will include those successful proposals from panel hearings and Councillor initiatives process
  - Councillors feel meet criteria and objectives of LTP
- The CD will then be consulted on – April to May 2016
  - To identify whether proposals should make it through to final Plan
  - Get feedback and ideas on how to improve proposals

Absolutely Positively  
Wellington City Council  
Me Heke Ki Pōneke

## Engagement and Consultation

- A range of engagement techniques and channels will be used
  - AP website
  - Web analytics
  - Market research
  - Virtual ward forums
  - Physical ward forums
  - Special Interest forums, including an accessibility special interest forum
- Process culminates in oral hearings
  - Where submitters speak directly to Council

Absolutely Positively  
Wellington City Council  
Me Heke Ki Pōneke

12/01/2016

## How you can help

- Promote AP process
- Provide feedback
  - Directly
  - AP website
- Participate in the panel hearing process
- Provide advice on design of the engagement and consultation process
  - Accessibility special interest forum
  - Ways to get message across
- Participate in the engagement and consultation process
- Participate in the oral hearings

Absolutely Positively  
Wellington City Council  
Me Heke Ki Pōneke

## Caveats

- AP process is just starting and full financial picture is not known
  - No promises on initiatives
- Council is committed to continuous engagement
  - “If not this year, maybe next year”

Absolutely Positively  
Wellington City Council  
Me Heke Ki Pōneke

12/01/2016

Item 2.1 Attachment 1



**Questions?**

[neil.mcinnis@wcc.govt.nz](mailto:neil.mcinnis@wcc.govt.nz)

021 247 9735

---

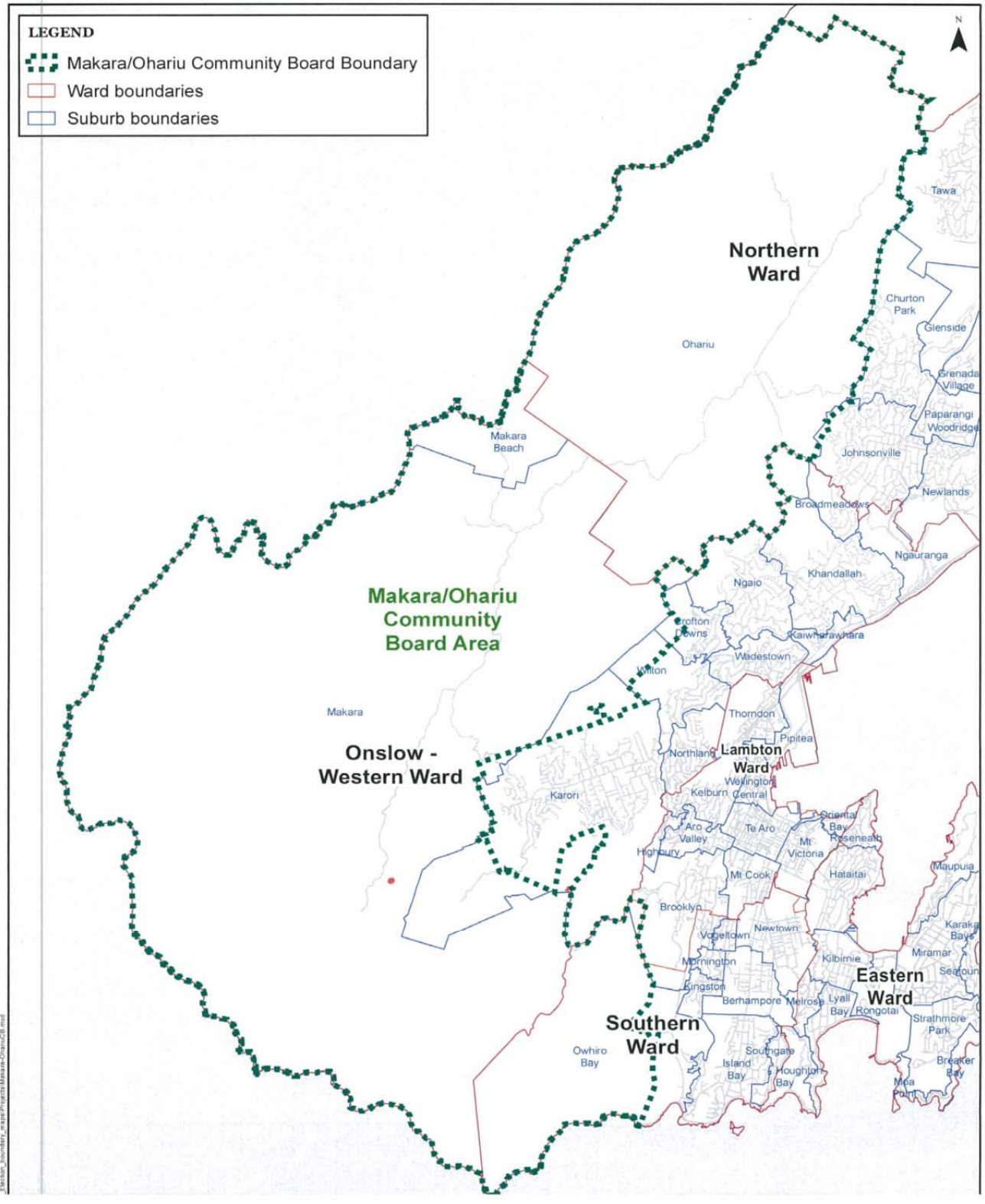
Absolutely Positively  
Wellington City Council  
Me Heke Ki Pōneke





**LEGEND**

-  Makara/Ohariu Community Board Boundary
-  Ward boundaries
-  Suburb boundaries



**Makara Ohariu  
Community Board  
Plan 2015-18**

\\boson\_boundary\_map\proj\makara-ohariu\cb.mxd

## **Table of Contents**

Table of Contents .....	2
Your Community Board Members .....	3
Makara Ohariu Community Board Plan .....	3
Process of developing the Community Board Plan .....	3
Our Vision .....	4
Our mission statement.....	4
Our values .....	4
Community overview and snapshot .....	4
Demographic trends since 2001.....	4
History .....	4
Key landmarks and sites of significance.....	5
Plan for Makara and Ohariu .....	5
Priorities are measured against SMART:.....	5
Possible funding streams .....	6
Projects and Programmes 2015-18.....	7
Appendix 1: List of all proposed programmes and projects .....	11

## Your Community Board Members



Makara/Ohariu Board members (from left to right): Judy Liddell, Christine Grace (Chair), Hamish Todd (Deputy Chair), Murray Burdan, Wayne Rudd, Margie Scotts.

### **Makara Ohariu Community Board Plan**

The Community Plan is a non-statutory document and as such will not override current legislation or any other statutory documents of the Wellington City Council. Its only function will be to act as a guiding and strategic outline of how and which strategic areas the Makara Ohariu communities want to progress in the future.

Two separate Community Plans for Makara and Ohariu were compiled in 2001 and were due for an overhaul and review in 2015. A decision was made by the Makara Ohariu Community Board to have a unitary plan for both areas where interlinked issues can be identified and progressed through combined community and interest group participation.

The Community Board Plan represent the two local communities' priorities and these have been weighted, reconciled and trade-offs have been made between what is realistic and falls within the Community Board's area of powers and functions.

### **Process of developing the Community Board Plan**

- The Makara Community Plan and the Ohariu Community Plan from 2001 were both in need of a full review
- A community-wide survey was done during December 2014 and January 2015

- The analysis of the survey results led to a very specific set of community expectations, aspirations and key proposals

A process has been introduced to ensure robust decision making is undertaken for any projects for the next financial year. A project management direction has been placed on projects to ensure the scope is understood and clear project governance is in place to deliver these projects. All projects will require project definitions as well as an appointed project lead. If there is not a high degree of certainty around some projects identified these projects will be placed into an investigation phase.

### **Our Vision**

A community where everyone can feel they belong

### **Our mission statement**

The Makara Ohariu Community Board is there to preserve, protect and foster all of the above for both Makara and Ohariu now and into the future.

### **Our values**

We value:

#### *Our Community*

The history of Makara and Ohariu

Low density population, safe with rural values and people looking out for each other

#### *Our Facilities*

Community Halls

Historic Churches

Our School (Makara)

Golf Clubs

Horse riding opportunities

Recreational activities available

#### *Environment*

Our land, streams, beach and coastline (Water quality)

Protecting our landscape (views and sustainability)

#### *Economy*

Large farms, lifestyle blocks, and village atmosphere

Location close to Wellington City for employment opportunities and resources

### **Community overview and snapshot**

The Makara Ohariu Community Board represents the 783 (2013) RESIDENTS OF Makara and Ohariu and covers a land area of 15,193 ha (152sq km). The area is a mix of rural and semi-rural activities, small settlements and industrial development. There were 336 dwellings (March 2013). Of these, 42 (up from 30 in 2006) were rented, 51 were unoccupied and the remainder were owner-occupied.

### **Demographic trends since 2001**

- The population has increased from 699 to 783
- The number of dwellings has increased from 294 to 336
- There are 42 new residential building sites
- Pastoral farming has declined while industrial development (windfarms) and lifestyle and small residential property development have increased.
- There has been an increase in hospitality and leisure businesses and day visitors which resulted in increased heavy vehicle, motor vehicle and cycle traffic.



## History

Makara and Ohariu history is a long one, from early Maori settlement in the 1800's to European arrivals in the 1840's, some families of whom are still living in Makara and Ohariu today. Originally part of the Porirua Riding of the Hutt County Council, the Makara/Ohariu Community Board now comes under the Wellington City Council. Schools were built in both Ohariu (since closed) and Makara in the 1860's, churches and community halls followed soon after, providing many opportunities for dances, weddings, and social activities for generations of local residents, and still do so.

Makara and Ohariu men went to the first and second world wars, with eight men losing their lives. This would have been a huge impact on families from such a small rural population, but they are still remembered. Fort Opau, an artillery battery close to Makara Beach was in operation during the second war, and is still visible today.

Makara and Ohariu form about 63% of the land area of Wellington, and the closeness to the city made farming the original main use of land, from dairy to agriculture, although there were some failed goldmining ventures on Terawhiti Station. Sheep and beef are now mainly farmed, although horses now feature much more, with much grazing for pony clubs and recreational use. Lifestyle blocks are also now more prevalent in the area.

Makara Beach has also been an attraction for visitors, fishermen, bach and home owners over the years. Fisherman's Bay was a popular area originally for fishermen and boat mooring, and although the baches have now gone, many people use the Department of Conservation Makara Walkway throughout the year.

## Maori history

Makara, and particularly Ohariu has the longest tradition of Māori occupation in the Wellington region. Famous navigator Kupe, his wife and children are the first reputed ancient people to settle the area. Other early tribes to occupy included Ngāi Tara and Ngāti Mamoe. Ngāti Ira also occupied a pā site at Te Ika-ā-Maru Bay, called Te Ika-ā-Marū. Ngāti Ira, originally from Tokomaru Bay and Anaura Bay, migrated down with Tahu Potiki, who eventually migrated to the South Island. Ngāti Ira remained in Wellington. In recent times, Ngāti Tama settled at a kainga (village) site, at Ohariu Bay, called Te Arei Kainga.

Of the 19 sites of significance in the Makara and Ohariu area there are four pā sites. Two are un-named at Wharehou Bay with medium ratings of significance to Māori. Te Rama-ā-Paku located on the peninsular between Ohau and Te Ika-ā-Marū Bays was occupied possibly by Te Ātiawa - it has a 'high' rating of significance to Māori. Te Ika-ā-Marū pā site, occupied by Ngāti Tama has an 'outstanding' rating of significance to Māori. It was a principal pa of occupation and today is a rich site of archaeological interest.

An early Council (Wellington County District) map of the 1900s identified one Māori burial ground. It is located on the northern side of Ohariu Bay.

## Key landmarks and sites of significance

In Ohariu

- The Ohariu Hall, the Holy Trinity Church, Spicer Forest, Old Coach Road and the Ararua Walkway.

In Makara

- The Makara Community Hall, Cemetery, Westwind and Mill Creek Wind Farms, St Patrick's and St Matthias Churches, Makara Beach Gun Emplacements, Makara Estuary and Makara Beach.

## Plan for Makara and Ohariu

The Community Plan is a vehicle for community discussion to decide future outcomes.

It is a collection of key issues and projects to consider over the next three years. It facilitates involvement and discussion on what you would like to see happen now and in the future for Makara and Ohariu.

**Priorities are measured against SMART:**

- *Specific* (implementable targets/milestones)
- *Measurable* (Reporting on achievements/failures to the community)
- *Achievable* (available human and financial resources)
- *Realistic* (as to the budget and within the scope of delegated authority of the Community Board)
- *Timeframe* (achievable within the next 3 year period).

**Possible funding streams**

<b>Funding Sources</b>	<b>Amount</b>
Long-term Plan/Annual Plan funding requests	
Local funding streams and community fundraising	
Interest groups (Meridian) contributions	
Grants funding	
Other	

### Projects and Programmes 2015-18

Strategic Area	Programme	Project	Project manager/lead	Year 1	Year 2	Year 3	Notes/Comments
Community	Develop new facilities and recreation opportunities	Develop ridgeline walks, cycle and horse riding park and tracks through Spicer Forest		Monitor Council progress			Council is in the process of delivering this outcome
		Apply for Council grants to upkeep facilities	Christine Grace (Hall Committee)	Ongoing through the LTP and Annual Plan processes	Ongoing through the LTP and Annual Plan processes	Ongoing through the LTP and Annual Plan processes	MC to investigate list of possible funding streams and grants
		Organise social and community events and activities (quizzes, dinners, working bees, opinion days)		Gather information  Investigate options, venues  Facilitate events team			Monthly (Ad-hoc/event specific) joint social gathering/function
	Promote community identity and spirit	Develop Community Awards	Christine Grace	Investigate, facilitate and plan (fundraising/sponsorships)	Ongoing	Ongoing	Bring Meridian in as sponsor/ co-presenter
		Mark historical sites and develop plan for preservation, public access and interpretive	Christine Grace	Collate stories and photographs  Assemble a group of interested volunteers to identify sites and			



**MAKARA/OHARIU COMMUNITY BOARD**  
**3 DECEMBER 2015**

Strategic Area	Programme	Project	Project manager/lead	Year 1	Year 2	Year 3	Notes/Comments
		display boards. Preserve local stories and photographs		contribute /produce markings			
		Promote Makara Ohariu	Wayne Rudd	Investigate and approach external stakeholders  Create a dedicated website for Makara and Ohariu	Maintain website	Maintain website	
Environment	Protect, restore and sustain the coastal environment and maintain facilities	Reforest Wharehou Bay	Christine Grace	Investigate and pursue options to see what can be achieved in partnership with landowners  Make a submission to Greater Wellington Regional Council			This is Meridian and Greater Wellington Regional Council land
		Upgrade boat ramp at Makara Beach		Reconcreting of ramp - Wellington City Council	Monitor WCC maintenance works		Service request, renewal and maintenance?
	Protect and restore fresh waterways	Improve fresh water quality	Margie Scotts	Investigate boundaries of authority (GWRC)  Look for champion(s) and volunteers for removal of weeds etc.	Re-assess project and drivers.		

**MAKARA/OHARIU COMMUNITY BOARD**  
3 DECEMBER 2015

Strategic Area	Programme	Project	Project manager/lead	Year 1	Year 2	Year 3	Notes/Comments
		Improve flood protection	Christine Grace	Initiate discussions with Meridian  Outline and develop project scope  Joint effort with Meridian	Implementation phase		
	<b>Control noxious weeds and pests</b>	Control gorse and Darwin's Barberry on farmland		Monitor Wellington City Council's bio-control actions	Monitor Wellington City Council's bio-control actions	Monitor Wellington City Council's bio-control actions	
<b>Infrastructure</b>	<b>Improve power supply infrastructure</b>	Reliable power lines and supply		Monitor annually Wellington Electricity	Monitor annually Wellington Electricity	Monitor annually Wellington Electricity	The last upgrade made supply more reliable
<b>Development</b>	<b>Manage land development to support the community's values and vision and maintain appropriate rural activities</b>	Restrict commercial activities  Oppose development that is out of character with existing land use or impacts on it.	Margie Scotts	Review Rural Rules	Scope changes and/or impacts		
	<b>Subdivisions</b>	Restrict subdivision and further					

Strategic Area	Programme	Project	Project manager/lead	Year 1	Year 2	Year 3	Notes/Comments
		development					
		Reduce land development for value gains					
		Tighten and enforce subdivision rules					
		Retain current green areas					
	<b>Roading- Improve maintenance of road reserve</b>	Regular roadside mowing, flax removal, tree trimming and removal of rubbish on road reserves		Monitor Wellington City Council maintenance activities  Investigate possibility of organising volunteer groups to remove /monitor rubbish			Distribute/ re-inforce Fix-it line to community
	<b>Roading – Road safety</b>	Improve safety for cyclists and motorists		Gather technical advice on proper ways to identify and enlarge bays  Investigate options /solutions and costings			\$100,000 from LTP
		Improve road					

**MAKARA/OHARIU COMMUNITY BOARD**  
**3 DECEMBER 2015**

Strategic Area	Programme	Project	Project manager/lead	Year 1	Year 2	Year 3	Notes/Comments
		surface					
		Create safe berms on blind corners					
		Better signage					
		Enlarge culverts		Allocate funding from LTP for this project			This might be a single or multiple year project
		Makara Hill sealing			Allocate funding from LTP for this project		

---

**Appendix 1: List of all proposed programmes and projects**

[List of all proposed programmes and projects as a reference]

**MAKARA/OHARIU COMMUNITY BOARD**  
**3 DECEMBER 2015**