

ORDINARY MEETING

OF

STRATEGY AND POLICY COMMITTEE

MINUTES

Time: 1:30 pm
Date: Wednesday, 17 February 2021
Venue: Ngake (16.09)
Level 16, Tahiwī
113 The Terrace
Wellington

PRESENT

Mayor Foster
Deputy Mayor Free
Councillor Calvert (Deputy Chair)
Councillor Condie
Councillor Day (Chair)
Councillor Fitzsimons
Councillor Foon
Councillor Matthews
Councillor O'Neill (via audiovisual link)
Councillor Pannett
Councillor Paul (via audiovisual link)
Councillor Rush (via audiovisual link)
Councillor Sparrow
Councillor Woolf (via audiovisual link)
Councillor Young

TABLE OF CONTENTS
17 FEBRUARY 2021

Business	Page No.
1. Meeting Conduct	5
1.1 Karakia	5
1.2 Apologies	5
1.3 Conflict of Interest Declarations	5
1.4 Confirmation of Minutes	5
1.5 Items not on the Agenda	6
1.6 Public Participation	6
2. General Business	6
2.1 Draft Cemeteries Management Plan 2020 Hearings	6

1. Meeting Conduct

1.1 Karakia

The Chairperson declared the meeting open at 1:31 pm and invited members to stand and read the following karakia to open the meeting.

**Whakataka te hau ki te uru,
Whakataka te hau ki te tonga.
Kia mākinakina ki uta,
Kia mātaratara ki tai.
E hī ake ana te atākura.
He tio, he huka, he hauhū.
Tihei Mauri Ora!**

Cease oh winds of the west
and of the south
Let the bracing breezes flow,
over the land and the sea.
Let the red-tipped dawn come
with a sharpened edge, a touch of frost,
a promise of a glorious day

1.2 Apologies

Moved Councillor Day, Seconded Councillor Fitzsimons, the following motion

Resolved

That the Strategy and Policy Committee:

1. Accept the apologies from Councillor Condie for lateness.

Carried

1.3 Conflict of Interest Declarations

No conflicts of interest were declared.

1.4 Confirmation of Minutes

Moved Councillor Day, Seconded Councillor Matthews, the following motion

Resolved

That the Strategy and Policy Committee:

1. Approve the minutes of the Strategy and Policy Committee Meeting held on 11 February 2021, having been circulated, that they be taken as read and confirmed as an accurate record of that meeting.

Carried

1.5 Items not on the Agenda

There were no items not on the agenda

1.6 Public Participation

There was no public participation as this meeting was scheduled to only hear oral submitters.

2. General Business

(Councillor Rush joined the meeting at 1:35 pm)
(Mayor Foster joined the meeting at 1:37 pm)
(Councillor Condie joined the meeting at 1:38 pm)
(Deputy Mayor Free joined the meeting at 1:38 pm)
(Deputy Mayor Free left the meeting at 1:49 pm)

The meeting adjourned at 2:07 pm and reconvened at 2:51 pm. The following members were absent: Councillor Foon, Councillor Condie and Deputy Mayor Free

(Councillor Calvert joined the meeting during the adjournment)
(Councillor Foon returned to the meeting at 2:58 pm)
(Councillor Condie returned to the meeting at 3:01 pm)
(Deputy Mayor Free returned to the meeting at 3:11 pm)
(Councillor Rush left the meeting at 3:20 pm)

2.1 Draft Cemeteries Management Plan 2020 Hearings

Moved Councillor Fitzsimons, Seconded Councillor Day, the following motion

Resolved

That the Strategy and Policy Committee:

1. Receive the information.
2. Hear the oral submitters and thank them for speaking to their submissions.

Carried

Secretarial note: The following members of the public spoke to their submissions.

Time	First name	Surname	Ind/Org
1:35 pm	Peter	Burke	Individual
1:45 pm	Julia	Umaga	Individual
1:50 pm	Wilber	Dovey	Otari-Wilton's Bush Trust
2:00 pm	Janet	MacDonald	Individual
2:05 pm	Helen	Matias	Greek Orthodox Community of Wellington
2:50 pm	Sue	Esterman	Wellington Progressive Jewish Congregation
3:00 pm	Jacqui	Bridges	New Zealand Society of Genealogists
3:10 pm	Yvonne	Weeber	Individual
3:15 pm	Anne	Else	Individual
3:20 pm	Richard	Bentley	Friends of Karori Cemetery Inc (accompanied by Barbara Milligan)

Tabled items by oral submitters

Attachments

- 1 Peter Burke
- 2 Helen Matias
- 3 Yvonne Weeber
- 4 Anne Else
- 5 Friends of Karori Cemetery

The meeting concluded at 3:35 pm with the reading of the following karakia:

Unuhia, unuhia, unuhia ki te uru tapu nui	Draw on, draw on
Kia wātea, kia māmā, te ngākau, te tinana, te wairua	Draw on the supreme sacredness To clear, to free the heart, the body and the spirit of mankind
I te ara takatū	
Koia rā e Rongo, whakairia ake ki runga	Oh Rongo, above (symbol of peace)
Kia wātea, kia wātea	Let this all be done in unity
Āe rā, kua wātea!	

Authenticated: _____

Chair

ORDINARY MEETING

OF

STRATEGY AND POLICY COMMITTEE

MINUTE ITEM ATTACHMENTS

Time: 1:30 pm
Date: Wednesday, 17 February 2021
Venue: Ngake (16.09)
Level 16, Tahiwī
113 The Terrace
Wellington

Business

Page No.

Tabled items by oral submitters

1.	Peter Burke	2
2.	Helen Matias	8
3.	Yvonne Weeber	9
4.	Anne Else	12
5.	Friends of Karori Cemetery	13

The grave facts of history

There is a growing appetite for people to know more about their family histories

- *In my Irish culture, the wake is spiritually similar to the Tangi and the burial site is sacred and untouchable*
- *Treat our burial sites the same as an urupa*
- *Don't desecrate the past and destroy history for future generations*
- *Look for solutions from now on – don't do what happened at Bolton St*
- *The dead aren't on email – historians and genealogists rely on headstones, memorials and documents. True to Ireland is an example of how important these are when writing a book.*

Some examples



L – R: The grave of my great great grandparents in Moycullen, Co Galway (about 1830) , the Moycullen Catholic Church and graveyard when my Irish grandparents, and other relatives are buried, my father, my father and brothers grave at Karori in Wellington. My NZ grandparents are also buried at Karori.



L-R Paddy Sullivan on the left with my dad in Wellington circa 1934, the headstone I had made in 2018 to go on his grave at Otaki and his great nephew visiting the grave later that year. Moycullen village today



L- R Maurice Leo Awlward circa 1942, his nephew Fr Eamon Aylward is the first person from his Irish family to visit Maurice's grave at Opunake and Fr Eamon with two of his cousins – former Irish MP's



L- R John Clancy – far right as best man at my parents wedding, his grave at Makara, two of my cousins from Moycullen visit his grave in 2018 and his nephew, Paedar Clancy (2IC of the Irish Language Commission) speaking at the book launch of True to Ireland, September 2019.



L – R Fr Jim McGlynn with Eamon de Valera, Wellington 1948, Fr Jims Grave, Dalgan Park Ireland, his nephew Hugh and daughter Allannah with me in Ireland 2019.



Peter Frasers grave and memorial at Karori, Peter Fraser, memorial and graves and the men executed for their part in the 1916 Easter Rising\



w

The sad case of an Irish man (Matthew Lagan) who was sent to a mental hospital for refusing to fight for NZ in 1914. He was never allowed out and is buried in a paupers grave in Auckland. I cannot get a headstone on the grave because it is a heritage site and I need family permission which I can't get because I can not trace his relatives in Ireland.



Thank you. Peterj@true-to-ireland.com

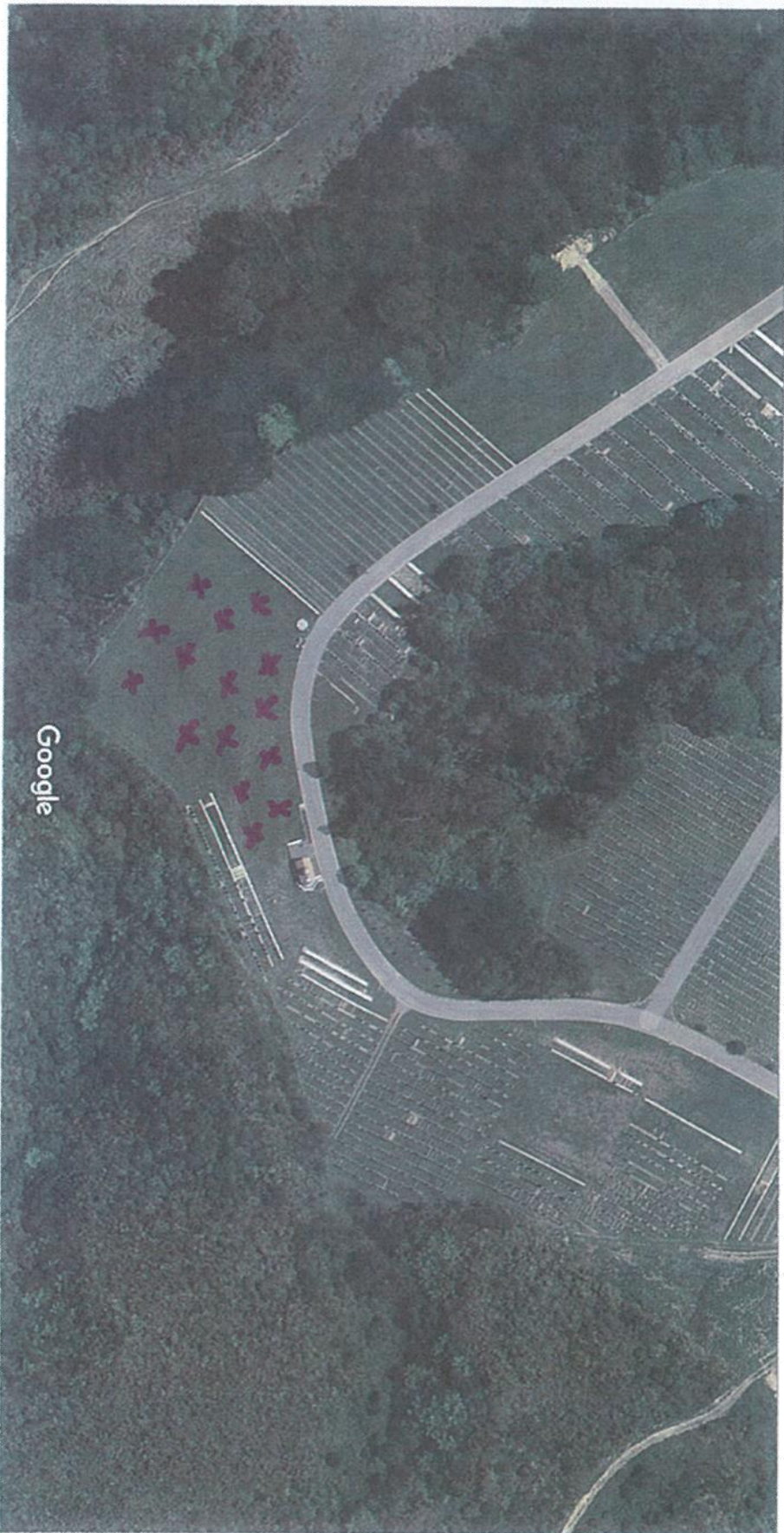
PS - don't make a grave mistake



2/16/2021

Google Maps Makara Cemetery

Makara Cemetery - Google Maps



Imagery ©2021 CNES / Airbus, Maxar Technologies, Wellington City Council, Map data ©2021 20 m

Cemeteries Management Plan Review

Yvonne Weeber

Lewis-Weeber
grave in need of
repair



No record in the
WCC cemeteries
search results for
Gordon Weeber
or Ada Weeber as
a memorial
inscription



17 February 2021

Cemeteries: Oral submission at hearings by Dr Anne Else, MNZM

Historical graves

The highlighted graves in historical cemeteries need to include a full range of significant people, not just “prominent men”. Installing QR code plaques carrying the correct information would let visitors easily understand their significance. Historians would co-operate with working on this, and it could be used to explain social history (e.g. a representative cluster of child deaths showing Wellington’s once deadly spread of disease due to poor sewerage).

Too much focus on “headstone” burials in submission questions

What about plaques on borders edging flower beds, with the ashes interred in the lawn in front of each plaque? The submission questions seemed to ignore this common type of interment. My husband’s ashes were interred in 2011 in one of several new rose beds at Karori Cemetery (with room for me to join him later). I want to add a QR square to the plaque.

Clear lines of communication

Unfortunately his rose bed (with Ingrid Bergman roses) has always been in a very poor state. None of the nearby beds are flourishing, but his is the worst, with sickly, barely surviving roses. We are very distressed about this, but do not know who to approach about it. I would happily donate to help improve it.

Future options

My 18 yr old son died suddenly in 1987. The only easily accessible cemetery option back then was a ‘name in stone book’ at Karori. Instead we approached the Botanic Gardens people, and were able to choose a tree to be planted with his ashes placed beneath it during the planting. There is no plaque but we know he is there.

PLEASE don’t focus on providing more conventional cemeteries, but instead work on developing an ecologically sound Wellington option similar to Auckland’s beautiful Eden Garden (although preferably without the very high charges for visiting that garden, which is privately run), where many people’s ashes can be interred under chosen plants with a small name marker and QR square.

FRIENDS of KARORI CEMETERY

Presentation to the WCC on 17 February 2012 on the Draft Cemeteries Management Plan dated Nov 2020

- The heritage values of the Karori Cemetery are significant
- However the Karori Cemetery is run down, significantly under staffed and most of it is too dangerous for the average visitor to walk through for most of the year
- Access to comprehensive genealogy data bases is increasing interest in family tree research and attracting significant new visitors
- For minimal investment the Cemetery could be turned into a heritage park and a significant tourist attraction, like Bolton Street
- We ask the WCC to invest in
 - safer tracks and much more track maintenance
 - the removal of the many hundreds of large trees destroying graves
 - more signage
 - more toilets
 - the restoration of the historic Shelter
- all around the world major cemeteries are being restored and made into visitor attractions
- Karori Cemetery suffers from many decades of benign neglect but it can be transformed relatively easily

Richard Bentley (Chairperson) and Barbara Mulligan (Vice Chairperson)