

Tabled information
reference 157/12p(a)

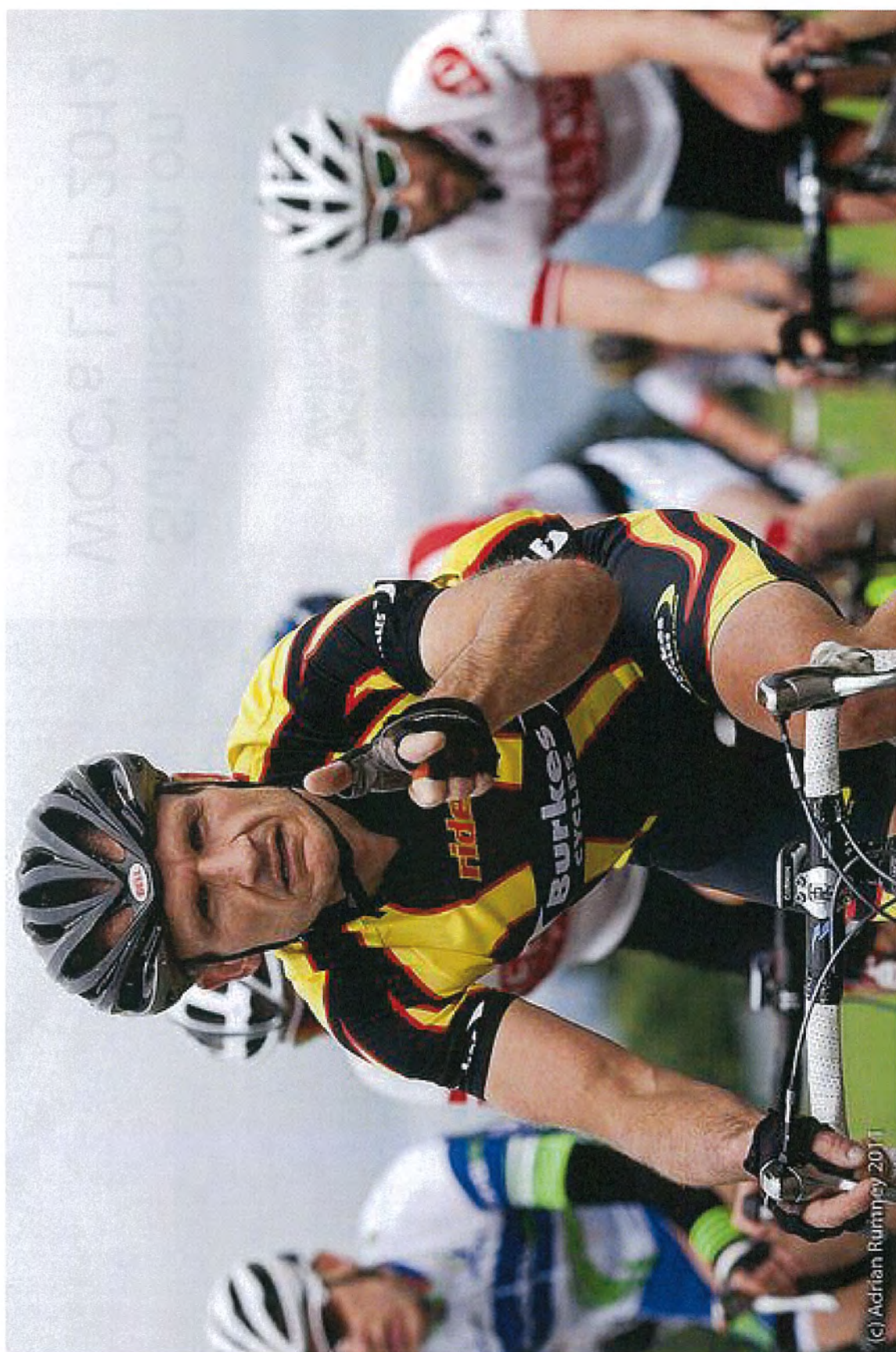
Getting Wellington moving



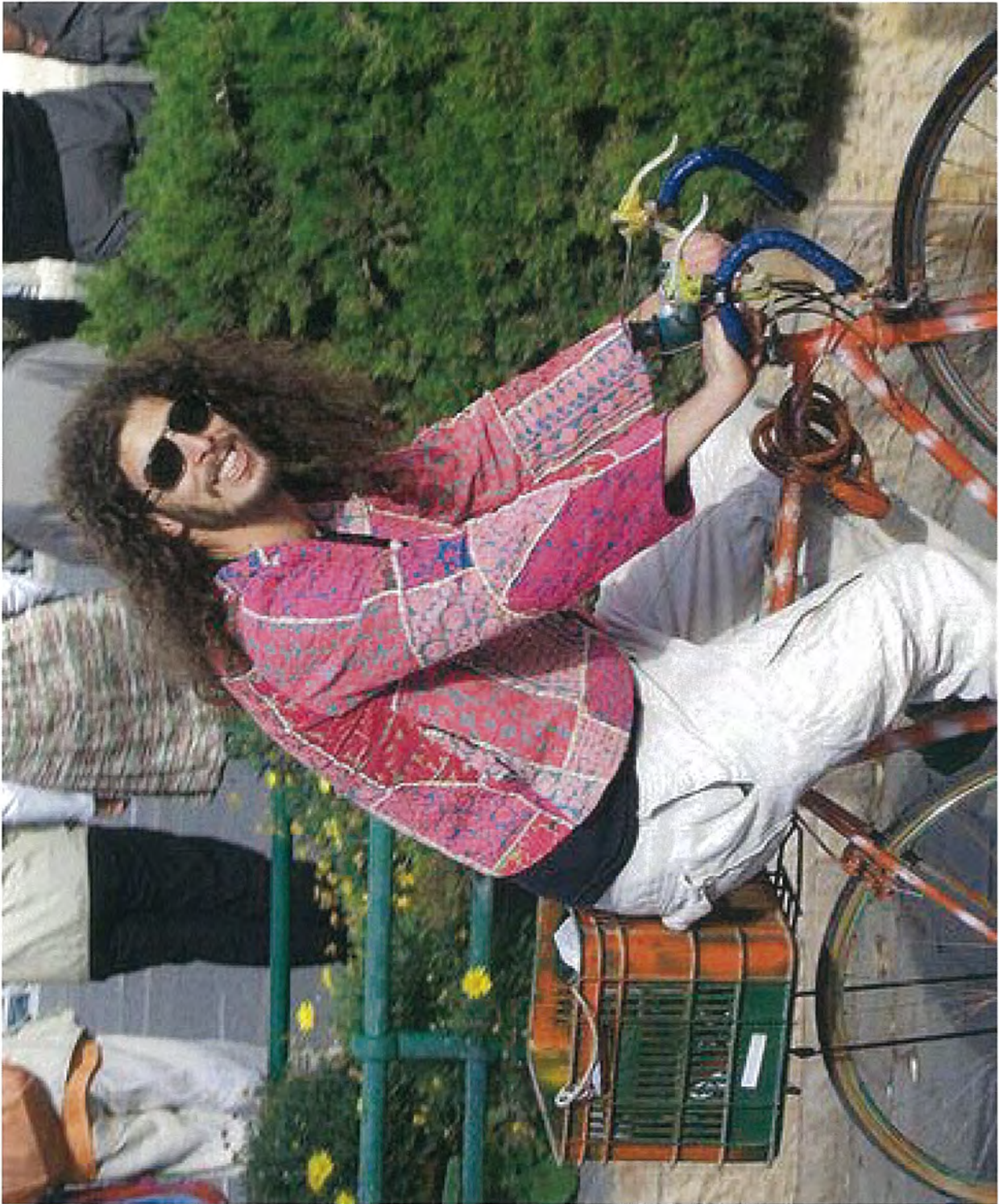
**Cycle Aware
Wellington**

**Submission on
WCC's LTP 2012**





(c) Adrian Rummey 2011



















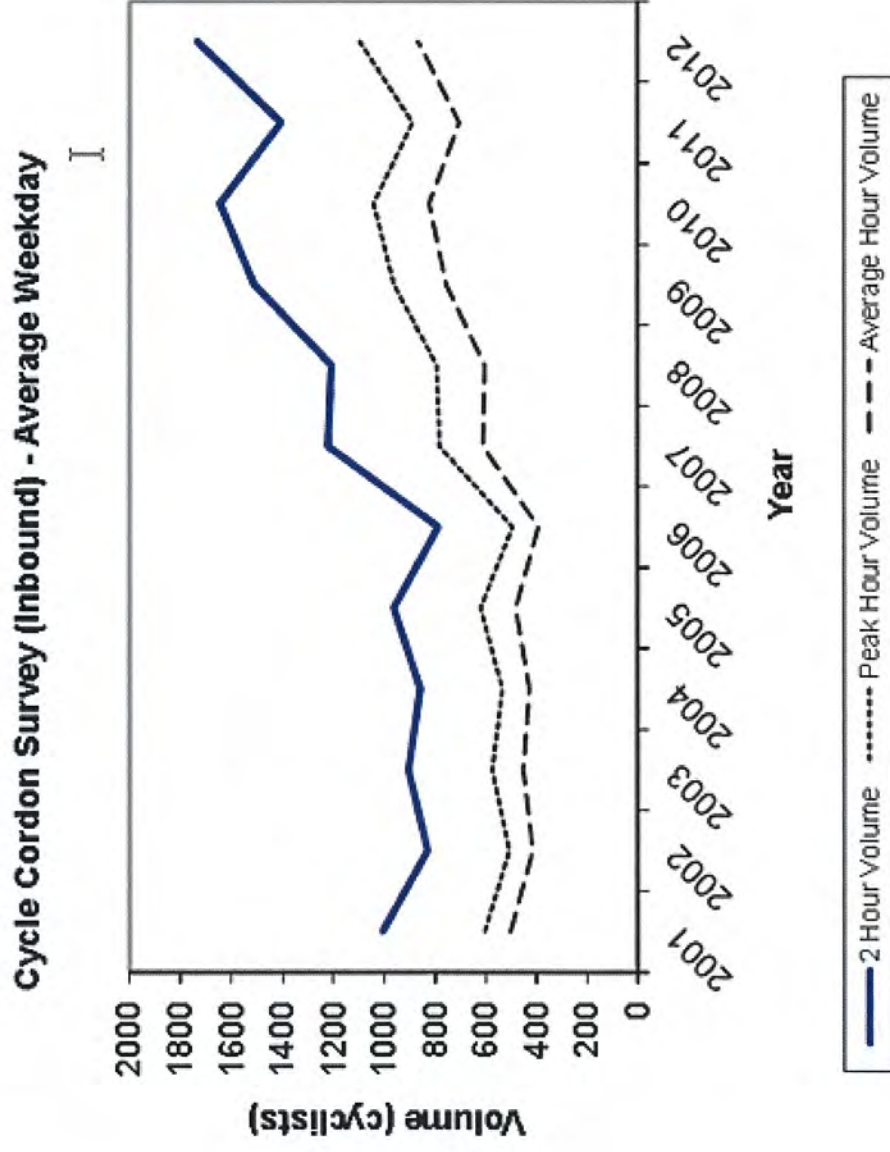








Cycling in Wellington



WCC achievements since 2008

- Advanced stop boxes
- South-bound Thorndon Quay
- Cycle-friendly drain grates
- Removed parking on Balaena Bay
- Reduced speed limits
- Tawa Stream Path
- More bike parking

Q64 What is your main method of traveling to Wellington on these occasions?

	Feb 2011 n=376
Car	29%
Motorbike	1%
Bus	31%
Taxi	-
Train	6%
Cable Car	4%
Bicycle	26%
Walk	1%
Scooter	-
Skateboard	1%
Other (specify)	-
Don't know	-

Q66 How would you prefer to travel into Central Wellington most weekdays?

	Feb 2011 n=150
Car	26%
Motorbike	-
Bus	26%
Taxi	1%
Train	8%
Cable Car	-
Bicycle	12%
Walk	21%
Scooter	2%
Skateboard	-
Public transport non-specific	1%
Other (specify)	3%
Don't know	-

COUNCIL ACTIVITY LEVELS OF SERVICE	MEASURING OUR PERFORMANCE	PERFORMANCE TARGETS				
		2009/10	2010/11	2011/12	2012/13-2018/19	
We provide a transport network that is efficient, convenient, reliable and safe – enabling the easy movement of people and goods to and through the city.	Resident condition (%) rating of the network – roads and footpaths (good or very good)	Roads 70% Footpaths – new measure	Roads 75% Footpaths 75%	Roads 75% Footpaths 75%	Roads 75% Footpaths 75%	
	Requests for service response rate – urgent (within 2 hours) and non-urgent (within 15 days)	Urgent 88% Non-urgent 81%	Urgent 100% Non-urgent 100%	Urgent 100% Non-urgent 100%	Urgent 100% Non-urgent 100%	
	Roads (%) which meet smooth roads standards (Smooth roads – measured by Smooth Travel Exposure based on NAASRA* counts)	68%	At least 68% of roads	At least 68% of roads	At least 68% of roads	
	Street pavements (%) condition rating (measured against WCC condition standards – i.e. free from trip hazards)	97%	97%	97%	97%	
	Street lighting (%) for major roads (arterial, principal and collector roads) meets national standards	95%	100%	100%	100%	
	Resident satisfaction (%) with street lighting in the residential and suburban areas	Central 72% Suburbs 68%	Central 80% Suburbs 70%	Central 80% Suburbs 70%	Central 80% Suburbs 70%	
	User satisfaction (%) with the safety and maintenance of cycleways	Maintenance 61% Safety 43%	Maintenance: At least 70% Safety: Improve on past year	Maintenance: At least 70% Safety: Improve on past year	Maintenance: At least 70% Safety: Improving trend	
	Road casualties** (per 10,000 population)	22,810,000 4,910,000 4,810,000	Continued reduction	Continued reduction	Continued reduction	
	Average peak travel times (am/pm combined) – between CBD and suburbs: • Miramar • Karori • Island Bay • Johnsonville	2008 = 15.19min / 2006 = 18.35min 2008 = 13.03min / 2006 = 14.38min 2008 = 13.16min / 2006 = 11.28min 2008 = 17.04min / 2006 = 17.30min	Maintain or improve	Maintain or improve	Maintain or improve	
	Residents (%) who agree that WCC transport network facilities and services provide good value for money	New measure	90%	90%	90%	
Ports access – capital works programme	Completed detailed planning for Kings Wharf and Bunny Street; commenced street improvements along Waterloo Quay.	Planning and design stage	Planning and design stage	Commence further street improvements along Waterloo Quay – Kings Wharf to Hinemoa Street.		
Walls condition rating – walls (%) rated 3 or better (1 – very good to 5 – very bad)***	58%	60%	62%	64%		

Purpose of measure	Measuring our performance	Targets				
		Baseline 2011	2012/13	2013/14	2014/15	2015/16-2022/23
To measure the standard of the transport infrastructure and service	Residents condition (%) rating of the network - roads and footpaths (good or very good)	R: 71% F: 76%	R: 75% F: 75%	R: 75% F: 75%	R: 75% F: 75%	R: 75% F: 75%
	Requests for service response rate - urgent (within 2 hours) and non-urgent (within 15 days)	Urgent: 100% non-urgent: 100%	Urgent: 100% non-urgent: 100%	Urgent: 100% non-urgent: 100%	Urgent: 100% non-urgent: 100%	Urgent: 100% non-urgent: 100%
	Roads (%) which meet smooth roads standards (smooth roads - measured by Smooth Travel Exposure based on NAASRA counts)	73%	70%	70%	70%	70%
	Footpath (%) condition rating (measured against WCC condition standards)	97%	97%	97%	97%	97%
	Street lighting (%) for major roads (arterial, principal and collector roads) meets safety standards	100%	100%	100%	100%	100%
	Residents satisfaction (%) with street lighting in the central city and suburban areas	Central: 86% Suburbs: 71%	Central: 85% Suburbs: 75%	Central: 85% Suburbs: 75%	Central: 85% Suburbs: 75%	Central: 85% Suburbs: 75%
	User satisfaction (%) with the safety and maintenance of cycleways	Safety: 40% Maintenance: 60%	Safety: 50% Maintenance: 60%	Safety: 50% Maintenance: 60%	Safety: 50% Maintenance: 60%	Safety: 50% Maintenance: 60%
	Residents (%) who agree that WCC transport network services provide good value for money	70%	75%	75%	75%	75%
	Sea wall and retaining wall condition rating - walls (%) rated 3 or better (1 very good, 5 very bad)	92%	90%	90%	90%	90%
	Quarry - legislative compliance	Compliant	Compliant	Compliant	Compliant	Compliant
To measure progress towards increasing transport safety						
	Road casualties (per 10,000 population): vehicles	15.2	Maintain or reduce	Maintain or reduce	Maintain or reduce	Maintain or reduce
	Road casualties (per 10,000 population): pedestrians	4	Maintain or reduce	Maintain or reduce	Maintain or reduce	Maintain or reduce
	Road casualties (per 10,000 population): cyclists	3.3	Maintain or reduce	Maintain or reduce	Maintain or reduce	Maintain or reduce
To measure accessibility of the city	Accessibility and usability of the transport network*	New measure	TBC	TBC	TBC	TBC

*Accessibility as defined in the WCC Disability Action Plan

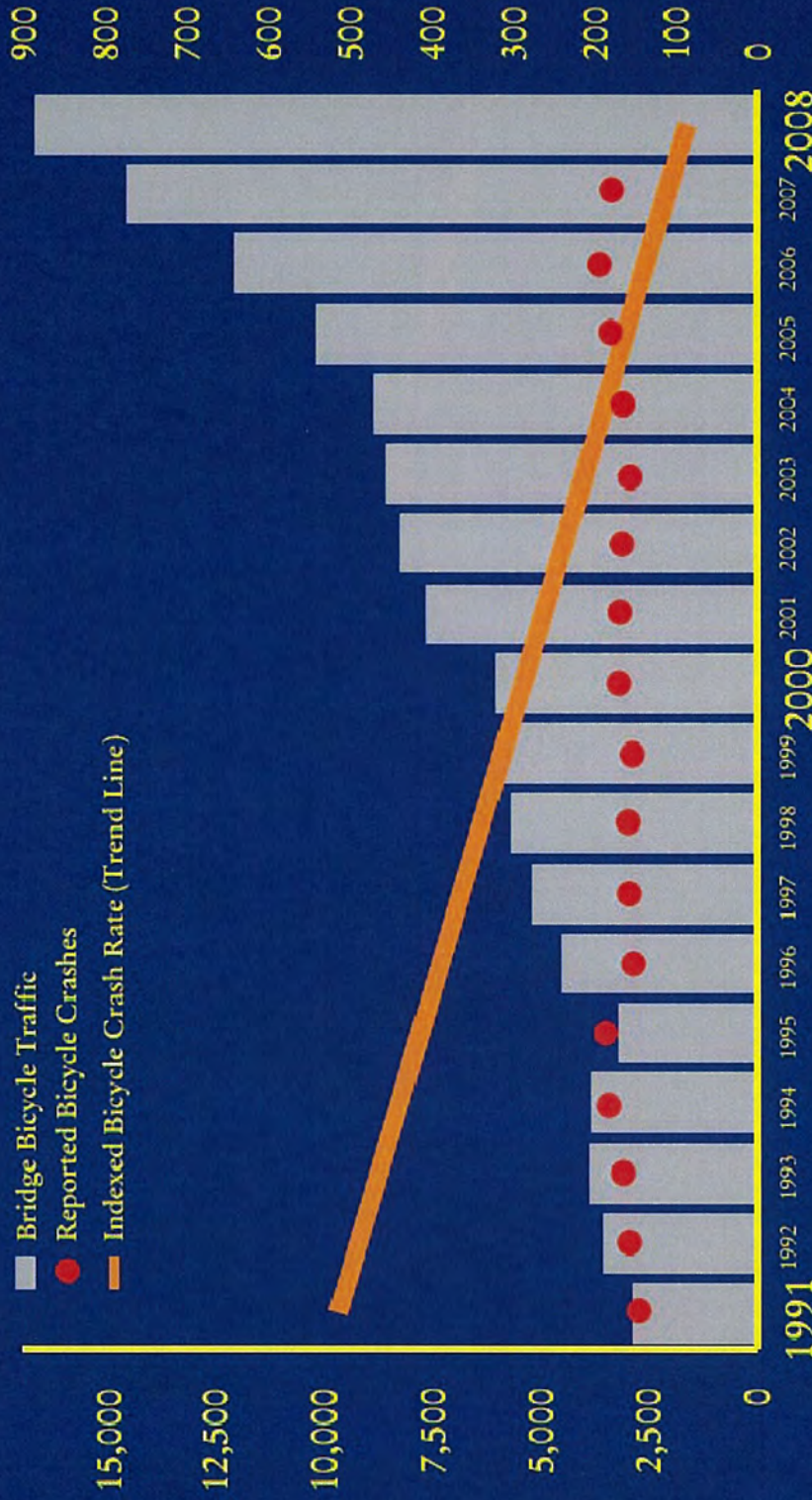


A case study from the USA



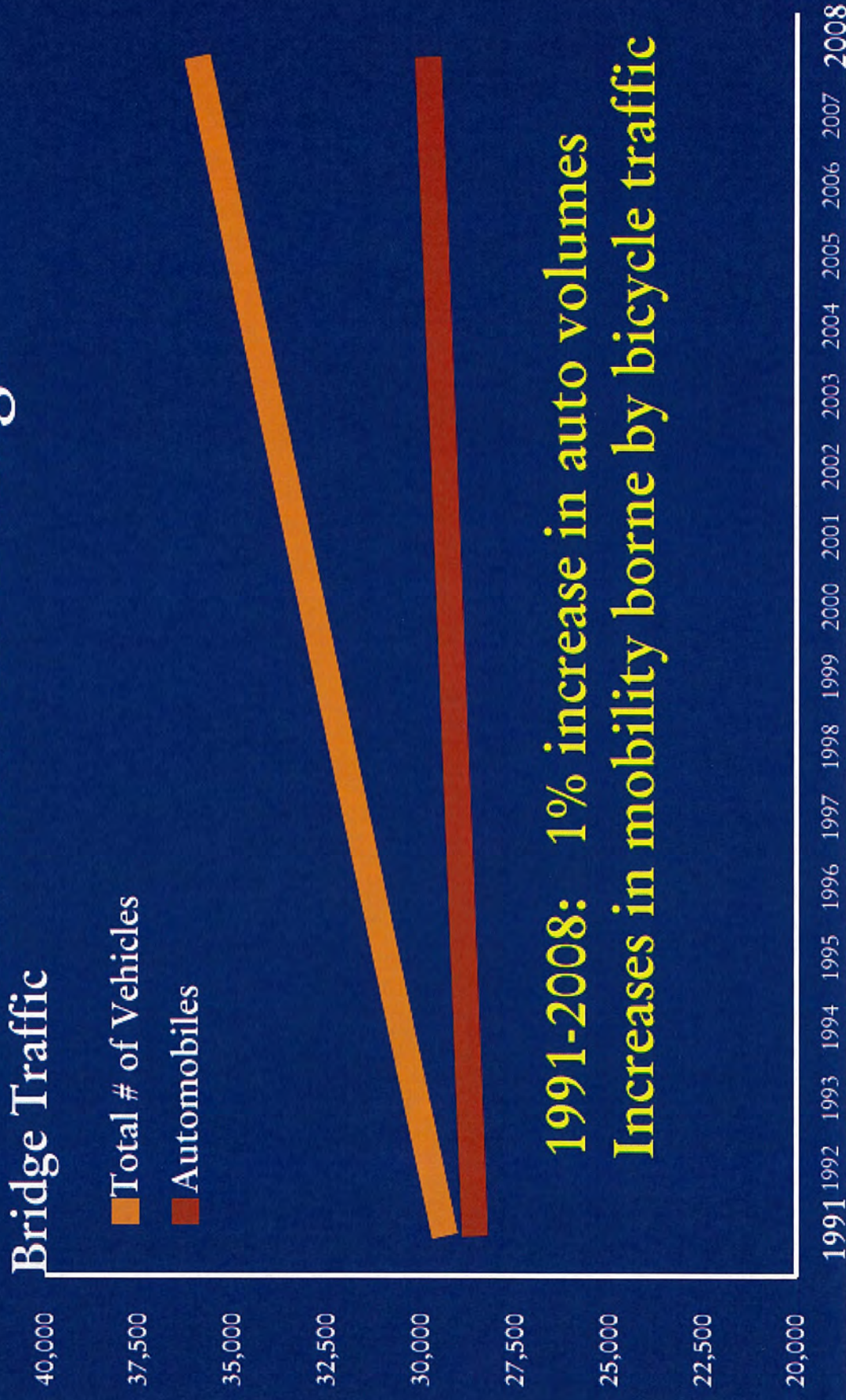
Crashes and Crash Rate

Cyclists per Day Crashes and Indexed Crash Rate



Reported Crashes
Bicycle Fatalities

Increase in Vehicle Traffic on the Hawthorne Bridge



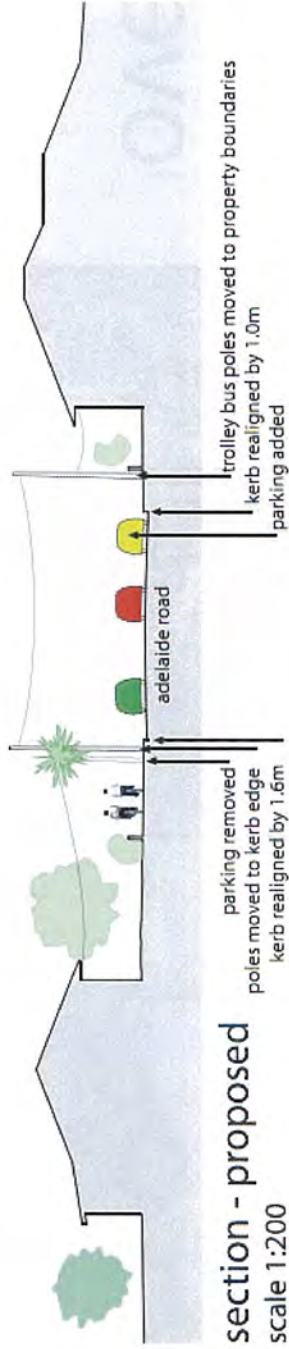
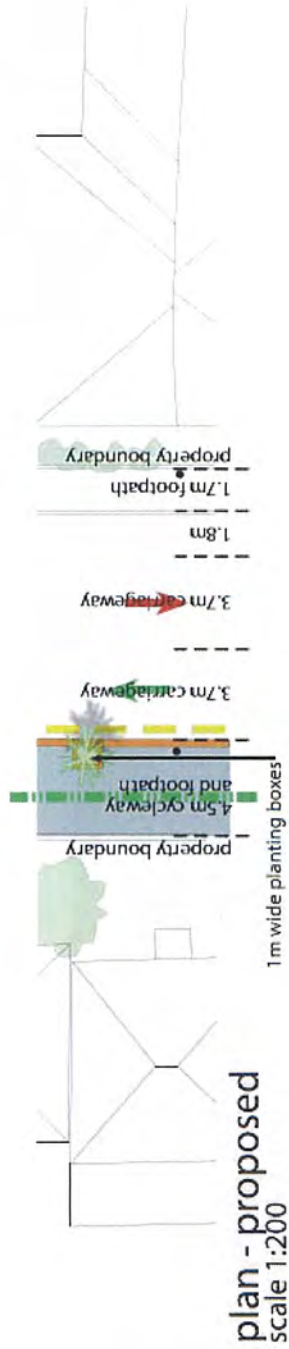
Hutt Rd/Aotea Quay



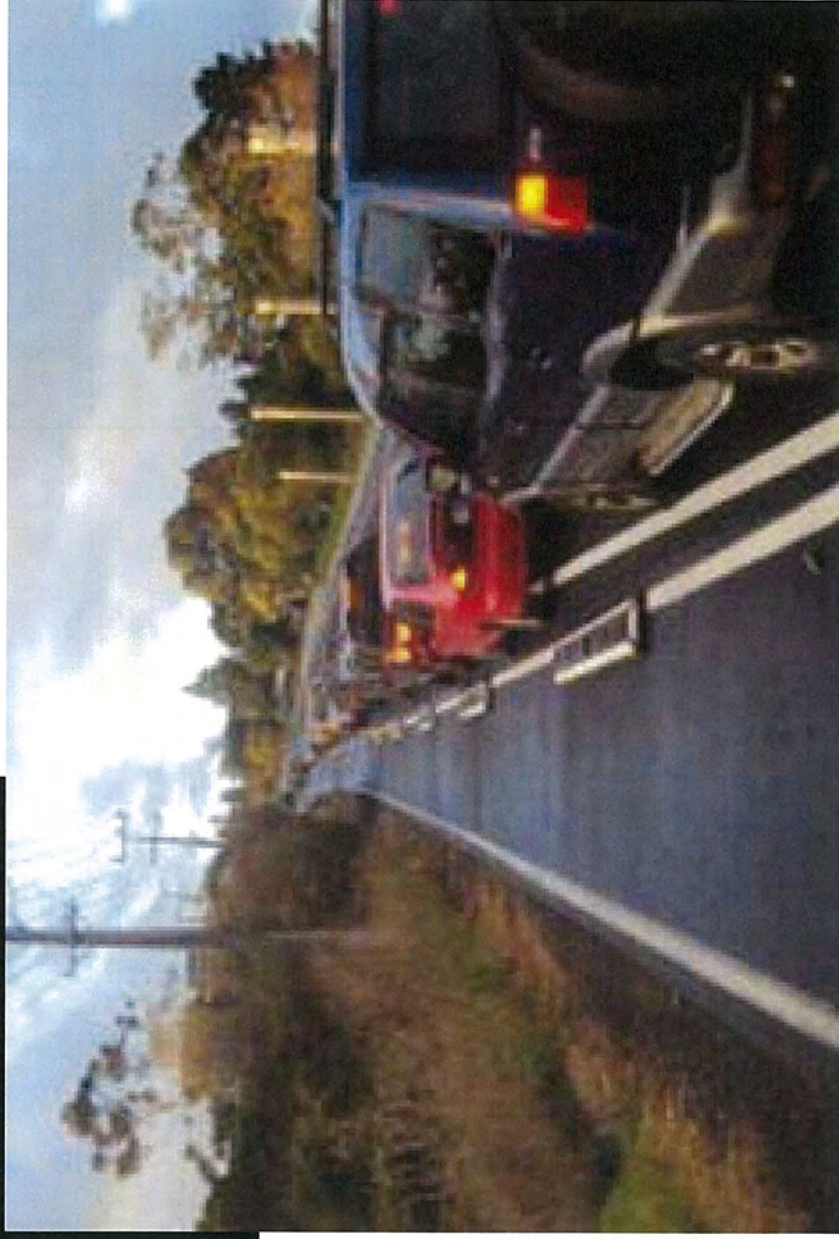
Jervois Quay



Island Bay - to CBD

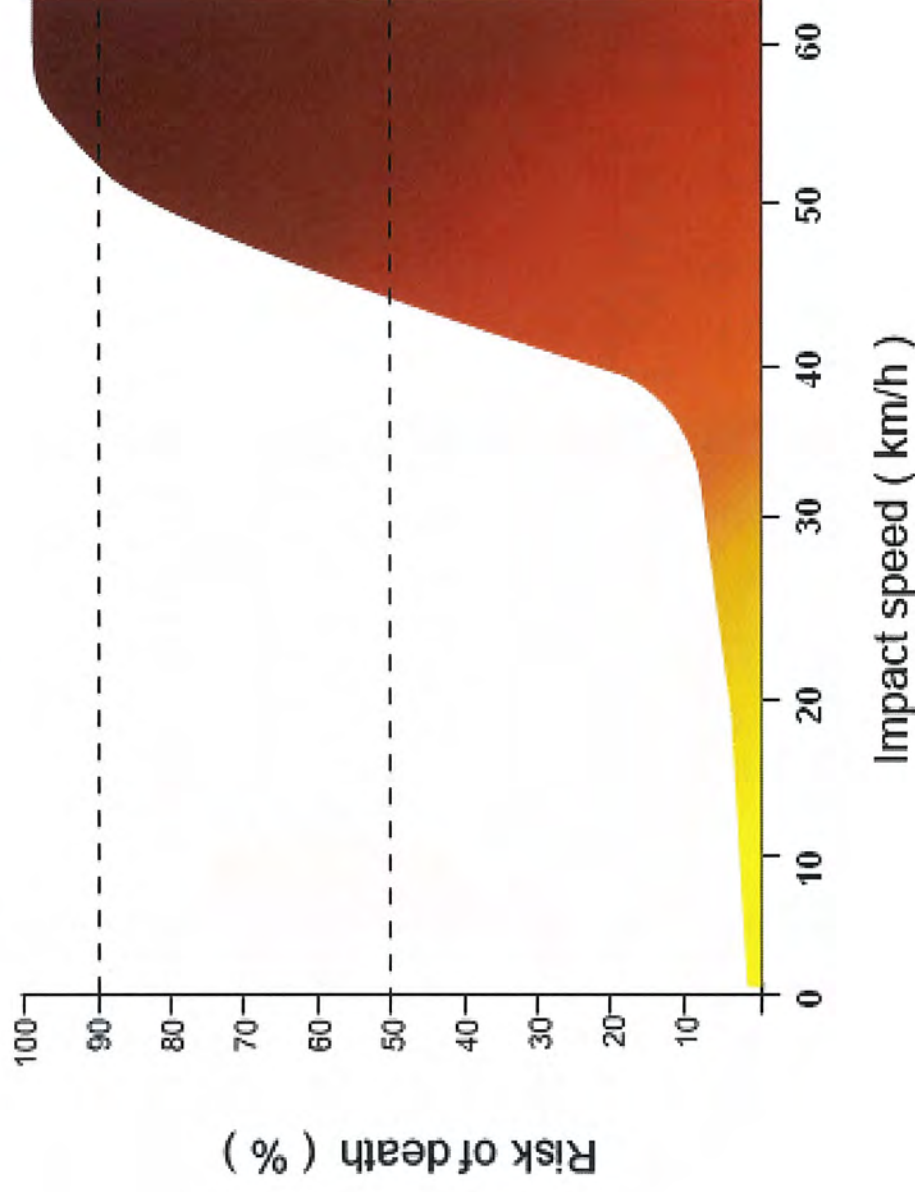


Traffic flow over parking



Slower Speeds

Risk of death for pedestrians, cyclists and motorcyclists



Permeability

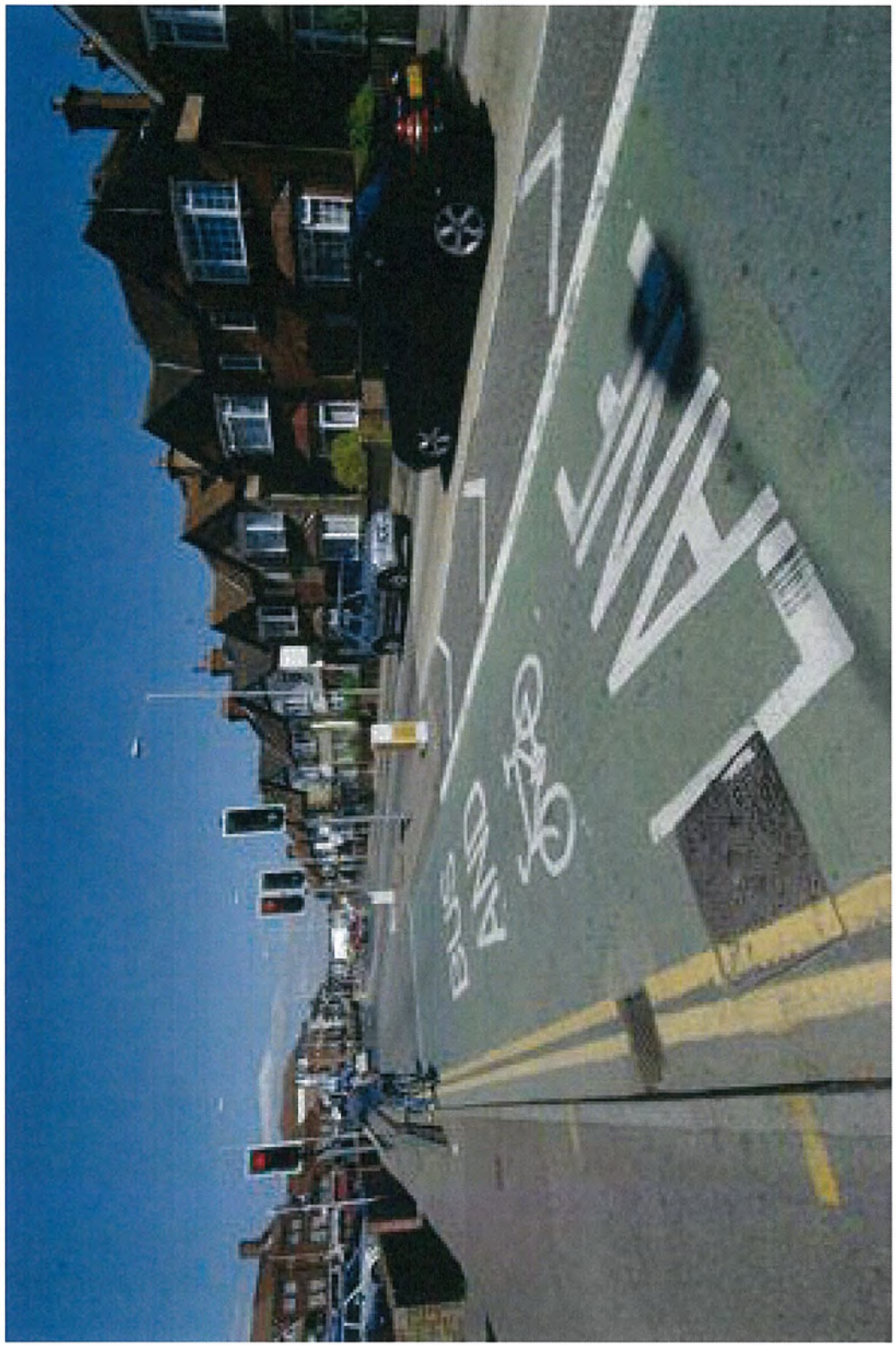
eg. Bunny St,
Lower Cuba St



Bike corral



Bus lanes



Sharrows



Promotional event

