

The background of the slide is a photograph of a dune covered in tall, green grass. The grass is the central focus, with its blades reaching upwards and slightly curved. The lighting is soft, creating a natural and serene atmosphere. The overall color palette is dominated by various shades of green, from light to dark, with some brownish tones at the base of the grass.

# Reclassification of Island Bay dunes to Scenic Reserve

To enhance dune restoration

# Island Bay Coast Care

Over the last six years, we have been working to turn:

*This ...*



*into this...*



by planting...



*In the winter, we plant pingao,  
spinifex and other native plants.*



by weeding...



*Throughout the year, we remove weeds such as Marram grass, African daisy, and non-native iceplant.*

by protecting.



*A sand ladder to get to the beach and a fence to protect the fragile dune plants.*



# Native dune plants



*Pingao*



*Spinifex*

Native dune plants have become rare as introduced weeds have taken over.

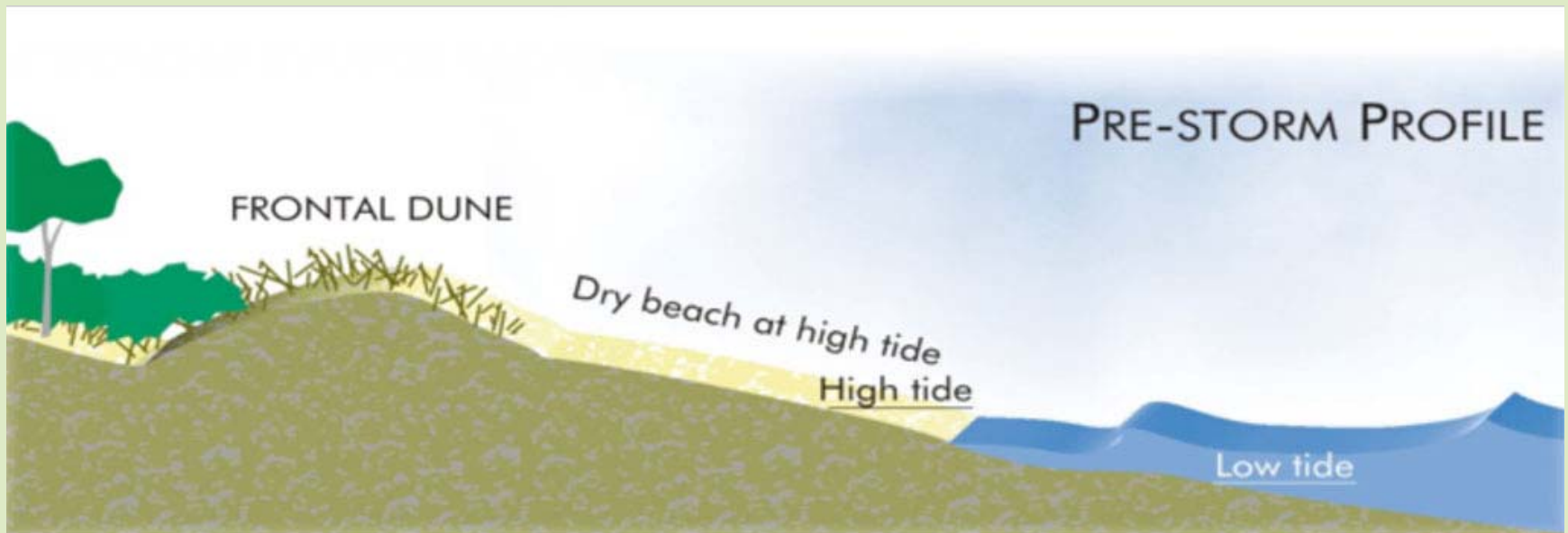
# Shape of dune – native plants

Spinifex and pingao form low, wide dunes



# Dune dynamics – before storm

Dunes store sand, sand builds up, waves break on the sand bar

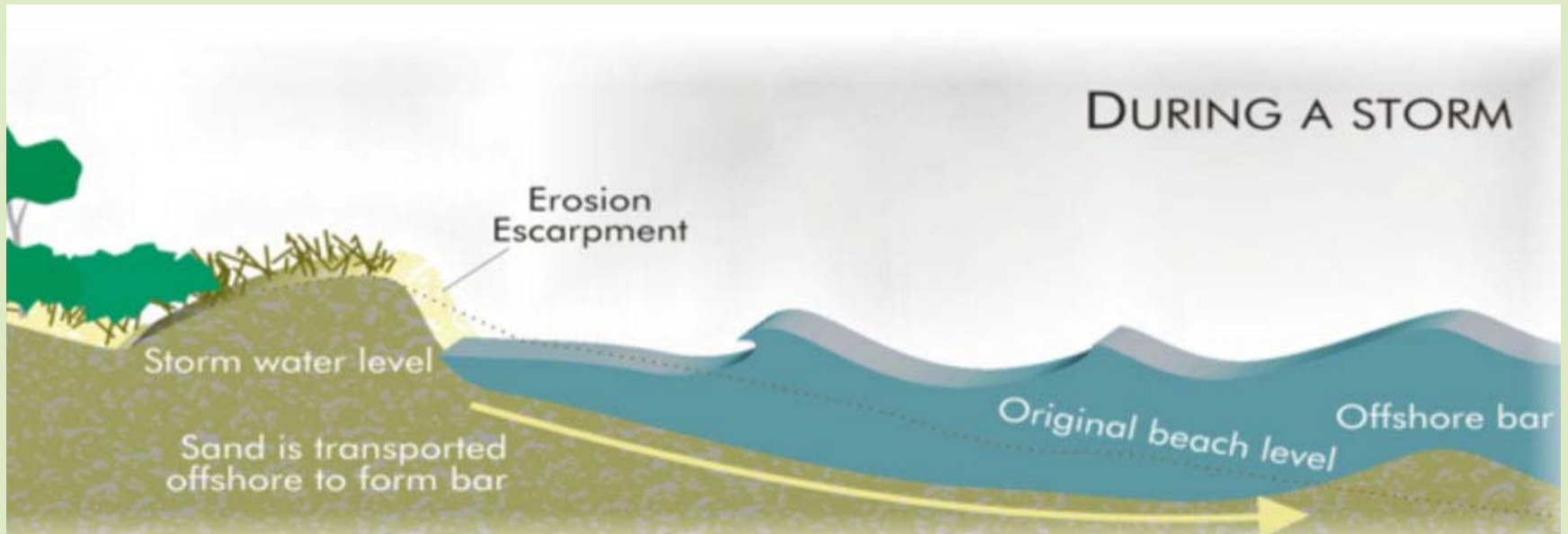


Hesp (2000), *Coastal Sand Dunes, Form and Function*  
Nordstrom et al (1990) *Coastal Dunes, Form and Process*



# Dune dynamics – during storm

The water rises up to foredune, sand is transported to the sea forming an offshore bar



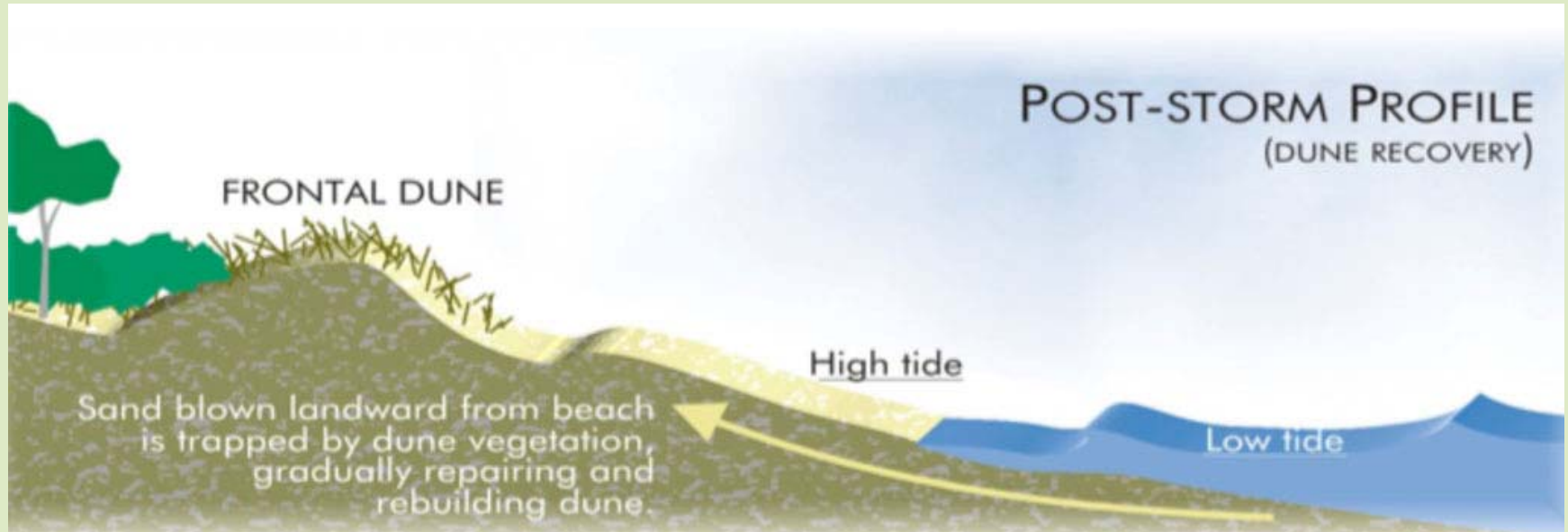
# Dune dynamics – beach recovery

Waves displace sand and sand is transported back to the beach



# Dune dynamics – dune recovery

Foredune revegetate as plants grow back through the sand while wind blows sand on the dunes.





# Seawalls and other structures



*Roads on dunes*



*Carparks on dunes*



*Houses too close to sea*



*Seawalls cause houses to lose garden*

# Sustainable solutions

Restoring dune by planting native dune plants



**June 1997:** eroding dune prior to replanting.



**March 2004:** the day after 10m waves from Cyclone Ivy

**Coastal Care Project in Bay of Plenty**  
**(Photos and text by Greg Jenks)**



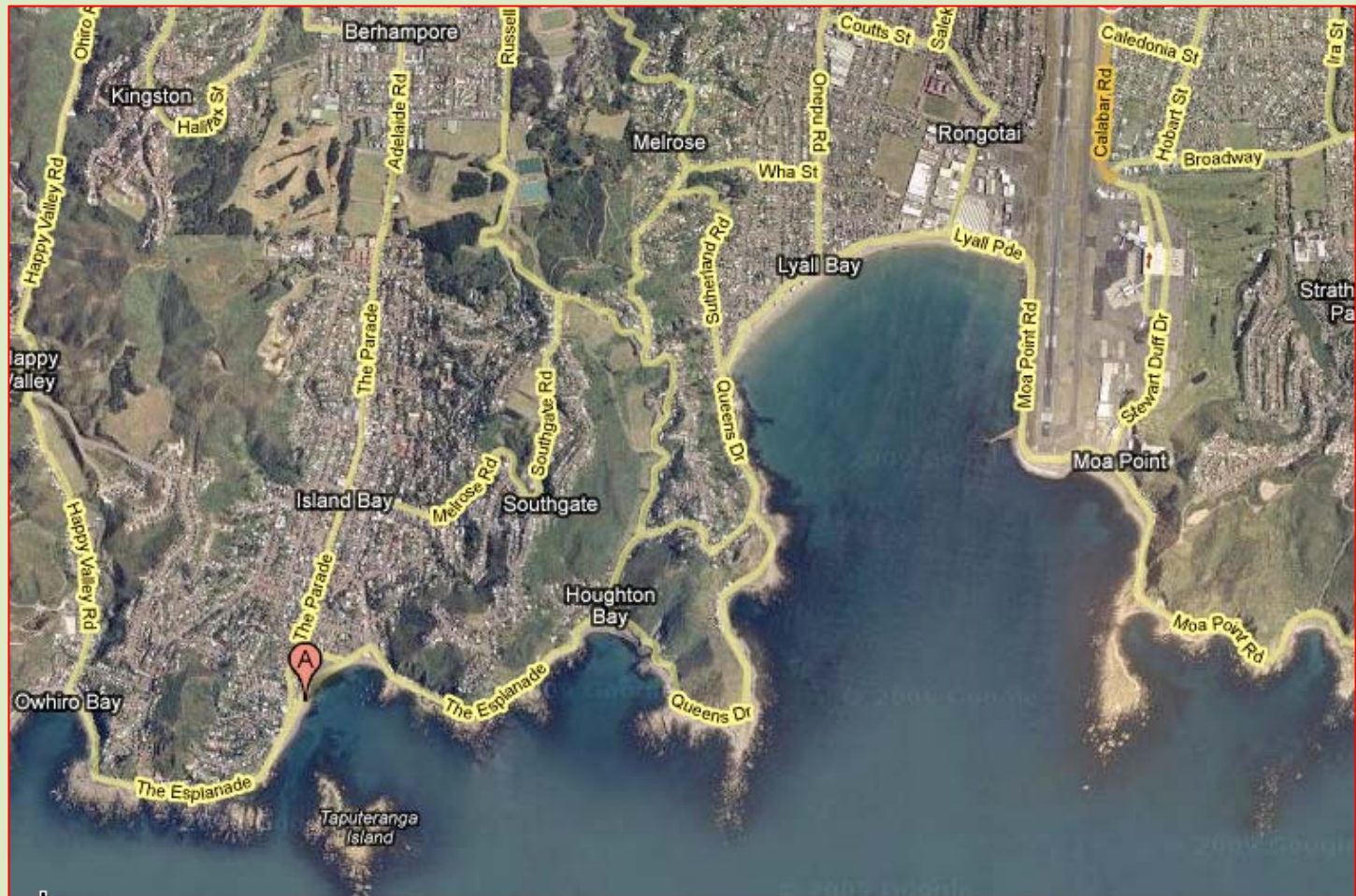
# Protect the Island Bay Dunes

From Open Space B to Scenic B reserve





# Reserves around the bays



# Thanks from our volunteers



*Island Bay Coast Care - Community planting day on Saturday 4 July*