
ORDINARY MEETING

OF

REGULATORY PROCESSES COMMITTEE

AGENDA

Time: 9:30am
Date: Tuesday, 19 May 2020
Venue: Zoom

MEMBERSHIP

Mayor Foster
Councillor Condie
Councillor Free
Councillor Matthews
Councillor O'Neill
Councillor Sparrow (Chair)
Councillor Woolf

Have your say!

You can make a short presentation to the Councillors at this meeting. Please let us know by noon the working day before the meeting. You can do this either by phoning 04-803-8334, emailing public.participation@wcc.govt.nz or writing to Democracy Services, Wellington City Council, PO Box 2199, Wellington, giving your name, phone number, and the issue you would like to talk about. All Council and committee meetings are livestreamed on our YouTube page. This includes any public participation at the meeting.

AREA OF FOCUS

The Regulatory Processes Committee has responsibility for overseeing the Council's regulatory functions, including responsibility for:

- Approving the list of Resource Management Act Commissioners and the associated Appointment Guidelines
- Objections to classifications under the Dog Control Act
- Fencing of swimming pools
- Road stopping
- Naming places in accordance with the Naming Policy, except for significant naming decisions, which are considered by the Strategy and Policy Committee.
- Traffic resolutions which are not considered by the Strategy and Policy Committee.
- Suburb boundaries
- Development Contributions remissions.
- Approving leases pursuant to Council policies.

To read the full delegations of this Committee, please visit wellington.govt.nz/meetings.

Quorum: 3 members

TABLE OF CONTENTS
19 MAY 2020

Business	Page No.
1. Meeting Conduct	5
1.1 Karakia	5
1.2 Apologies	5
1.3 Conflict of Interest Declarations	5
1.4 Confirmation of Minutes	5
1.5 Items not on the Agenda	5
1.6 Public Participation	6
2. General Business	7
2.1 Traffic Resolutions	7

1. Meeting Conduct

1.1 Karakia

The Chairperson will open the meeting with a karakia.

Whakataka te hau ki te uru,	Cease oh winds of the west
Whakataka te hau ki te tonga.	and of the south
Kia mākinakina ki uta,	Let the bracing breezes flow,
Kia mātaratara ki tai.	over the land and the sea.
E hī ake ana te atākura.	Let the red-tipped dawn come
He tio, he huka, he hauhū.	with a sharpened edge, a touch of frost,
Tihei Mauri Ora!	a promise of a glorious day

At the appropriate time, the following karakia will be read to close the meeting.

Unuhia, unuhia, unuhia ki te uru tapu nui	Draw on, draw on
Kia wātea, kia māmā, te ngākau, te tinana,	Draw on the supreme sacredness
te wairua	To clear, to free the heart, the body
I te ara takatū	and the spirit of mankind
Koia rā e Rongo, whakairia ake ki runga	Oh Rongo, above (symbol of peace)
Kia wātea, kia wātea	Let this all be done in unity
Āe rā, kua wātea!	

1.2 Apologies

The Chairperson invites notice from members of apologies, including apologies for lateness and early departure from the meeting, where leave of absence has not previously been granted.

1.3 Conflict of Interest Declarations

Members are reminded of the need to be vigilant to stand aside from decision making when a conflict arises between their role as a member and any private or other external interest they might have.

1.4 Confirmation of Minutes

The minutes of the meeting held on 15 April 2020 will be put to the Regulatory Processes Committee for confirmation.

1.5 Items not on the Agenda

The Chairperson will give notice of items not on the agenda as follows.

Matters Requiring Urgent Attention as Determined by Resolution of the Regulatory Processes Committee.

The Chairperson shall state to the meeting:

1. The reason why the item is not on the agenda; and
2. The reason why discussion of the item cannot be delayed until a subsequent meeting.

The item may be allowed onto the agenda by resolution of the Regulatory Processes Committee.

Minor Matters relating to the General Business of the Regulatory Processes Committee.

The Chairperson shall state to the meeting that the item will be discussed, but no resolution, decision, or recommendation may be made in respect of the item except to refer it to a subsequent meeting of the Regulatory Processes Committee for further discussion.

1.6 Public Participation

A maximum of 60 minutes is set aside for public participation at the commencement of any meeting of the Council or committee that is open to the public. Under Standing Order 3.23.3 a written, oral or electronic application to address the meeting setting forth the subject, is required to be lodged with the Chief Executive by 12.00 noon of the working day prior to the meeting concerned, and subsequently approved by the Chairperson.

Requests for public participation can be sent by email to public.participation@wcc.govt.nz, by post to Democracy Services, Wellington City Council, PO Box 2199, Wellington, or by phone at 04 803 8334, giving the requester's name, phone number and the issue to be raised.

2. General Business

TRAFFIC RESOLUTIONS

Purpose

1. This report asks the Regulatory Processes Committee to consider 12 Traffic Resolutions that are recommended for approval. The Traffic Resolutions are attached to this report. These recommendations support the achievement of the Council's transport strategic outcomes of safety, accessibility, efficiency and sustainability.

Summary

2. A total of 14 proposed resolutions were issued for consultation at the end of February.
3. All feedback received during the consultation period has been included in the Traffic Resolution reports attached to this document and, where appropriate, officers' responses have been included.
4. After reviewing the feedback:
 - Twelve are being recommended for approval (refer to table below)
 - Two TRs were deferred:
 - TR55-20 Mascot Street – further consultation is required.
 - TR61-20 Westminster Street – further consultation required pending changes to proposal.
5. Officers are confident that the attached Traffic Resolutions, if approved, will improve the transport network in terms of road safety, accessibility, efficiency and sustainability.

Recommendation/s

That the Regulatory Processes Committee:

1. Receive the information.
2. Approve the following amendments to the Traffic Restrictions, pursuant to the provisions of the Wellington City Council Consolidated Bylaw 2008:
 - a. TR 15-20 Brandon Street – Loading Zone and Bus Stop Class Restriction
 - b. TR 53-20 Salamanca Road – Time Limited P10 to Coupon Parking
 - c. TR 54-20 Robert Street – No Stopping At All Times
 - d. TR 62-20 Clyde Street – P5 Time Limited Restriction and Formalise No Stopping At All Times
 - e. TR 64-20 Featherston Street – Loading Zone Time Restriction
 - f. TR 66-20 Houghton Bay Road – No Stopping At All Times
 - g. TR 67-20 Broadway, Miramar – No Stopping At All Times
 - h. TR 69-20 Totara Road – No Stopping At All Times
 - i. TR 70-20 Taurima Street – P120 Mobility Parking and Confirmation of P60 Parking
 - j. TR 71-20 Wigan Street – P120 Mobility Parking
 - k. TR 72-20 Thorndon Quay – Diplomatic Parking
 - l. TR 76-20 Oriental Parade (Freyberg Pool and Fitness Centre Carpark) – P240 Metered Parking















Background

6. Fourteen proposed traffic resolutions were publicly advertised in the Dominion Post on 28 February 2020. Copies were either hand delivered or posted to all properties in the affected area and electronic copies were sent to local Ward Councillors, and residents and business associations. Electronic copies were also available on the Wellington City Council website.
7. A summary report for each traffic resolution can be found in the attachments. Each summary contains:
 - a. the proposed traffic resolution report including map(s) as advertised for public feedback, or subsequently modified as a result of public feedback
 - b. all feedback received, and
 - c. where appropriate, Council officers' responses to the feedback.

Information

8. The attached 'Traffic Resolutions Summary Table RPC 19 May 2020' summarises the proposed changes which are detailed in the attached Traffic Resolutions. Whilst there will be net car park losses in some instances, the improvements in road safety, accessibility, efficiency and sustainability outweigh the proposed loss of car parking.

Attachments

Attachment 1.	Traffic Resolutions Summary Table RPC 19 May, 2020 ↓ 	Page 10
Attachment 2.	Table of Traffic Resolutions Legal Description RPC 19 May 2020 ↓ 	Page 12
Attachment 3.	TR 15-20 Brandon Street - Loading Zone and Bus Stop Class Restriction ↓ 	Page 18
Attachment 4.	TR 53-20 Salamanca Road - Time Limited P10 to Coupon Parking ↓ 	Page 21
Attachment 5.	TR 54-20 Robert Street - No Stopping At All Times ↓ 	Page 24
Attachment 6.	TR 62-20 Clyde Street - P5 Time Limited Restriction & Formalise No Stopping At All Times ↓ 	Page 29
Attachment 7.	TR 64-20 Featherston Street - Loading Zone Time Restriction ↓ 	Page 34
Attachment 8.	TR 66-20 Houghton Bay Road - No Stopping At All Times ↓ 	Page 37
Attachment 9.	TR 67-20 Broadway, Miramar - No Stopping At All Times ↓ 	Page 40
Attachment 10.	TR 69-20 Totara Road - No Stopping At All Times ↓ 	Page 45
Attachment 11.	TR 70-20 Taurima Street - P120 Mobility Parking & Confirmation of P60 Parking ↓ 	Page 50
Attachment 12.	TR 71-20 Wigan Street - P120 Mobility Parking ↓ 	Page 53
Attachment 13.	TR 72-20 Thorndon Quay - Diplomatic Parking ↓ 	Page 57
Attachment 14.	TR 76-20 Oriental Parade (Freyberg Pool and Fitness Centre Carpark) P240 Metered Parking ↓ 	Page 60

Authors	Wendy Ferguson, Project Coordinator Lindsey Hill, Project Coordinator, Network Operations
Authoriser	Siobhan Procter, Manager, Transport and Infrastructure

	Moana Mackey, Acting Chief City Planner
--	---

SUPPORTING INFORMATION

Engagement and Consultation

Recommendations have been publicly advertised.

Treaty of Waitangi considerations

Not applicable.

Financial implications

The work required is contained in a range of Operating Project budgets Policy and legislative implications.

Policy and legislative implications

The recommendations comply with the legal requirements for amendments to traffic restrictions as laid down in the Bylaws. Where possible and where appropriate, the Council's transport hierarchy approach is considered and applied, noting that not all resolutions result in improved outcomes for pedestrians and other active modes specifically.

Risks / legal

None identified.

Climate Change impact and considerations

We need to move more people with fewer vehicles in Wellington, especially at peak travel times. We are looking at ways to give buses more priority while making sure walking, cycling and other transport options are not unduly affected. The benefits of the bus related resolutions will be realised by more people using public transport, less traffic and therefore reduced greenhouse gas emissions.

Communications Plan

Not required.

Health and Safety Impact considered

We have considered the safety impacts of these proposals with the aim to improve safety of all road users.

Traffic Resolutions Summary Table RPC 19 May 2020

Traffic Resolution (TR)	Location	Current State	Proposed State	Strategic Driver	Source of TR	Net Parking Loss/gain	Beneficiaries of Proposed Change – average weekday volumes/Impact			Comments for Proposed Change	Feedback
							Traffic Volume	Passenger Number	Pedestrian Impact (+, -, no change)		
TR15-20	Brandon Street	No Stopping At All Times	Class Restricted Parking	Accessibility/ Safety	Business	N/A	2,220		No change	This proposal is to extend a bus stop and reconfigure a redundant driveway to a time restricted loading zone. A request was received from a business owner on the street for loading zone parking in place of the redundant driveway. This will ensure bus stop is clear during operating times and will improve accessibility and safety at bus stops and provide a loading zone for local business at other times.	Yes = 0 No = 0 Not stated = 0
TR53-20	Salamanca Road	Unrestricted Parking	Time Limited Parking	Accessibility	Public	N/A	2,300		No change	This proposal is to change two P10 parks to coupon parking. A request to remove P10 parking was received by a member of the public who utilises coupon parking in this area. Due to the closure of the childcare centre the time restricted parking is no longer required.	Yes = 0 No = 0 Not stated = 0
TR54-20	Robert Street	Unrestricted Parking	No Stopping At All Times	Accessibility/ Safety	Resident	-7	300		No change	This proposal is to install 42 metres of broken yellow lines on a narrow section of Robert Street. Council received a request regarding a No Stopping Restriction in this location.. This will improve safety and accessibility for residents on Robert Street by improving the sightlines of vehicles traveling along Robert Street.	Yes = 5 No = 0 Not stated = 0
TR62-20	Clyde Street	Unrestricted Parking	Time Limited Parking	Accessibility/ Safety	School	N/A	1,370		+ve impact	This proposal is to Introduce P5 Time Limited Restriction for a pickup and drop-off zone and to formalise 22.4 metres No Stopping At All Times restrictions near the Thames Street intersection. Council received a request from the School Principal regarding a safer pickup and drop-off zone for the school. This will improve public safety and accessibility.	Yes = 0 No = 1 Not stated = 0
TR64-20	Featherston Street	Class Restricted Parking P10	Class Restricted Parking P15	Efficiency	Business	N/A	19,890		No change	This proposal is to extend Loading Zone time restriction from P10 to P15. A local business that regularly uses the loading zone requested the extension of time in order to give users of the loading zone more time whilst in use.	Yes = 0 No = 0 Not stated = 0
TR66-20	Houghton Bay Road	Unrestricted Parking	No Stopping At All Times	Accessibility/ Safety	Public/ Bus Operator/ WCC Parking Warden	N/A	2,670		No change	This proposal is to install 7 and 9 metres of broken yellow lines. A member of the public, a bus operator and parking wardens have requested No Stopping lines at the entry/exit to the bus stop. This is to improve safety when approaching the intersection at The Esplanade and to improve bus accessibility when pulling into the bus stop.	Yes = 0 No = 0 Not stated = 0
TR67-20	Broadway	Unrestricted Parking	No Stopping At All Times	Safety	Resident	-1	12,980		No change	Install a total of 10.7m of broken yellow lines (BYLs) as shown on the post consultation plan following the feedback that was received. A resident has requested no stopping lines over and to the left of the driveway. This is to improve road safety for vehicles turning at the intersection and visibility for resident and road users on Broadway.	Yes = 0 No = 2 Not stated = 0
TR69-20	Totara Road	Unrestricted Parking	No Stopping At All Times	Accessibility/ Safety	Resident	-8	1,040		No change	This proposal is to install 19 and 31 metres of broken yellow lines. A resident of the area has requested No Stopping lines on the blind bends. It is a blind corner, creating a safety hazard when taking the corner if a car is parked forcing traffic into the opposing lane. This will improve safety and accessibility approaching the corner and prevention of parking in a way that creates a hazard on the road.	Yes = 0 No = 1 Not stated = 0
TR70-20	Taurima Street	Time Limited Parking	Restricted Parking	Accessibility	Businesses	N/A	5,990		No change	This proposal is to Install a P120 mobility park, Monday to Sunday, 8am-6pm and to confirm P60 parks (3 spaces). The Medical Centre (now closed) submitted a signed petition that included 3 local businesses requesting a short term mobility park in the area. This will allow mobility parking user's access to short term parking in the area. Confirmation was required for existing P60 parking restrictions.	Yes = 0 No = 0 Not stated = 0

Traffic Resolutions Summary Table RPC 19 May 2020

Traffic Resolution (TR)	Location	Current State	Proposed State	Strategic Driver	Source of TR	Net Parking Loss/gain	Beneficiaries of Proposed Change – average weekday volumes/Impact			Comments for Proposed Change	Feedback
							Traffic Volume	Passenger Number	Pedestrian Impact (+, -, no change)		
TR71-20	Wigan Street	Restricted Parking	Restricted Parking	Accessibility/ Safety	Public	N/A	600		No change	This proposal is to relocate P120 mobility parking. Two members of the public advised that the current location of the mobility park causes difficulty due its' short length and is positioned directly in front of a cycle park. This will improve accessibility to the mobility park.	Yes = 0 No = 1 Not stated = 0
TR72-20	Thorndon Quay	Metered Parking	Restricted Parking	Accessibility	MFA	-1 (metered) +1 (diplomatic)	11,030		No change	This proposal is to install Diplomatic Parking, Monday to Friday 8:00am to 6:00pm. Council received a request for diplomatic parking for the Timor-Leste Embassy from the Ministry of Foreign Affairs and Trade Protocol Officer. This is to ease the operational difficulties experienced by the embassy due to lack of available parking.	Yes = 0 No = 0 Not stated = 0
TR76-20	Oriental Parade - Freyberg	Unrestricted Parking	Metered Parking	Accessibility	Council	+ 1	Carpark		No change	This proposal is to change 7 x unrestricted parking bays, previously leased to the Tugboat Café, into P240 Metered Parking and to add an additional Metered Parking space in place of the hatched area outside the small access ramp to the Tugboat. This will add an additional 8 metered parking spaces to this very busy carpark. The P240 time limit enables gym members and non-gym members to park for up to 4 hours at a time and facilitate parking for pool and gym users while discouraging commuters from all day parking.	Yes = 0 No = 0 Not stated = 0

Table of Traffic Resolutions Legal Description RPC 19 May 2020

a.	Brandon Street, Wellington Central (TR15-20) Loading Zone/ Bus Stop Class Restriction		
	Delete from Schedule D (No Stopping) of the Traffic Restrictions Schedule		
	Column One	Column Two	Column Three
	Brandon Street	<i>No Stopping, at all times</i>	<i>South side, following the kerbline 36.7 metres northwest of its intersection with Featherston Street (Grid Coordinates X=1748793.747 m, Y=5428245.075 m) and extending in a north-westerly direction for 6.7 metres.</i>
	Add to Schedule B (Class Restricted) of the Traffic Restrictions Schedule		
	Column One	Column Two	Column Three
	Brandon Street	<i>Bus Stop Monday to Friday 6am – 10am, 3pm – 7pm</i>	<i>South side, following the kerbline 36.7 metres northwest of its intersection with Featherston Street (Grid Coordinates X=1748793.747 m, Y=5428245.075 m) and extending in a north-westerly direction for 6.7 metres.</i>
	Brandon Street	<i>Loading Zone P10, Monday to Friday 10:00am - 3:00pm, Saturday and Sunday 8:00am - 6:00pm, Goods Vehicles and Authorised Vehicles Only</i>	<i>South side, following the kerbline 36.7 metres northwest of its intersection with Featherston Street (Grid Coordinates X=1748793.747 m, Y=5428245.075 m) and extending in a north-westerly direction for 6.7 metres.</i>
b.	Salamanca Road, Kelburn (TR53-20) Time Limited - P10 to Coupon Parking		
	Delete from Schedule A (Time Limited) of the Traffic Resolution Schedule		
	Column One	Column Two	Column Three
	Salamanca Road	<i>P10, Monday – Friday 8am to 6pm</i>	<i>East side, commencing 78 metres north of its intersection with Gladstone Terrace and extending in a northerly direction following the eastern kerbline for 11 metres.</i>
c.	Robert Street, Newlands (TR54-20) No Stopping At All Times		
	Add to Schedule D (No Stopping) of the Traffic Resolution Schedule		
	Column One	Column Two	Column Three
	Robert Street	<i>No Stopping At All Times</i>	<i>East side, commencing 74 metres north of its intersection with Glanmire Road (Grid Coordinates X=1,752,667.45m Y=5,434,410.68m) and extending in a northerly direction following the eastern kerbline for 15.5 metres.</i>

Table of Traffic Resolutions Legal Description RPC 19 May 2020

	Robert Street	<i>No Stopping At All Times</i>	<i>West side, commencing 54.5 metres north of its intersection with Glanmire Road (Grid Coordinates X=1,752,655.02m Y=5,434,405.4m) and extending in a northerly direction following the western kerbline for 26.5 metres.</i>
d.	Clyde Street, Island Bay (TR62-20) P5 Time Limited Restriction & Formalise No Stopping At All Times		
	Add to Schedule D (no stopping restrictions) of the Traffic Resolution Schedule		
	Column One	Column Two	Column Three
	Clyde Street	<i>No Stopping, At All Times</i>	<i>East side, commencing from its intersection with Thames Street (Grid Coordinates X= 1,748,506.9m, Y= 5,422,497.00 m) and extending in a southerly direction for a total of 22.4 metres.</i>
	Add to Schedule A (Time Limited) of the Traffic Resolution Schedule		
	Column One	Column Two	Column Three
	Clyde Street	<i>P5 8:30am – 9:00am 2:45pm – 3:15pm Mon – Fri</i>	<i>East side, commencing 22.4m south of its intersection with Thames Street (Grid Coordinates X= 1,748,506.9m, Y= 5,422,497.00 m) and extending in a southerly direction for a total of 11 metres (2x parallel parks)</i>
e.	Featherston Street, Pipitea (TR64-20) Loading Zone Time Restriction		
	Delete from Schedule D (No Stopping, At All Times) of the Traffic Resolution Schedule		
	Column One	Column Two	Column Three
	Featherston Street	<i>Loading zone, P10, At All Times</i>	<i>East side, commencing 105.5 metres south of its intersection with Bunny Street (Grid Coordinates X=1748957.1 m, Y=5428566.2 m) and extending in a southerly direction following the kerbline for 34 metres.</i>
	Add to Schedule B (Class Restricted) of the Traffic Resolution Schedule		
	Column One	Column Two	Column Three
	Featherston Street	<i>Loading zone, P15, At All Times</i>	<i>East side, commencing 105.5 metres south of its intersection with Bunny Street (Grid Coordinates X=1748957.1 m,</i>

Table of Traffic Resolutions Legal Description RPC 19 May 2020

			<i>Y=5428566.2 m) and extending in a southerly direction following the kerbline for 34.4 metres.</i>
f.	Houghton Bay Road, Houghton Bay (TR66-20) No Stopping At All Times		
	Add to Schedule D (No Stopping Restrictions) of the Traffic Resolution Schedule		
	Column One	Column Two	Column Three
	Houghton Bay Road	<i>No Stopping, At All Times</i>	<i>East side, commencing 2.9 metres north of its intersection with The Esplanade (co-ordinates X=1,749,372.01, Y=5,421,804.17) extending for 9 metres north along the eastern kerb line.</i>
	Houghton Bay Road	<i>No Stopping, At All Times</i>	<i>East side, commencing 24.1 metres north from its intersection with The Esplanade (co-ordinates X=1,749,372.01, Y=5,421,804.17) extending North for 7 metres along the eastern kerb line.</i>
g.	Broadway, Miramar (TR67-20) No Stopping At All Times		
	Add to Schedule D (no stopping restrictions) of the Traffic Resolution Schedule		
	Broadway	<i>No Stopping, At All Times</i>	<i>South side, following the southern kerb line west from its intersection with Monorgan Road (co-ordinates X=1,752,128.82, Y= 5,423,547.37) and extending for 9.5 metres in a westerly direction.</i>
	Broadway	<i>No Stopping, At All Times</i>	<i>South side, following the southern kerb line west 14.4 metre from its intersection with Monorgan Road (co-ordinates X=1,752,128.82, Y= 5,423,547.37) and extending for 7.7 metres in a westerly direction.</i>
h.	Totara Road, Miramar (TR69-20) No Stopping At All Times		
	Add to Schedule D (no stopping restrictions) of the Traffic Resolution Schedule		
	Column One	Column Two	Column Three
	Totara Road	<i>No Stopping, at all times</i>	<i>East side of road, commencing 122.1 metres South West of its intersection with Nevay Road (co-ordinates X=1,753,028.53, Y=5,425,916.51) extending for 31 metres in south and eastern direction following the kerb line.</i>
	Totara Road	<i>No Stopping, at all</i>	<i>South side of road, commencing</i>

Table of Traffic Resolutions Legal Description RPC 19 May 2020

		<i>times</i>	<i>176.2 metres south -west of its intersection with Nevay Road (co-ordinates, X=1,753,043.48, y= 5,425,892.83), and extending in an east and south direction for 19 metres following the kerb line.</i>
i.	Taurima Street, Hataitai (TR70-20) P120 Mobility Parking & Confirmation of P60 Parking		
	Add to Schedule A (Time Limited Parking) of the Traffic Resolution Schedule		
	Column One	Column Two	Column Three
	Taurima Street	<i>P60, Monday to Sunday, 8:00am-6:00pm</i>	<i>North side, following the kerb line 33.5 metres west of its intersection with Moxham Avenue (Grid Coordinates X= 1,752,331.55m, Y= 5,425,065.13m) and extending in a westerly direction for 18.0 metres. (3 parallel parks)</i>
	Add to Schedule B (Restricted Parking) of the Traffic Resolution Schedule		
	Column One	Column Two	Column Three
	Taurima Street	<i>No stopping except for vehicles displaying an operation mobility card, P120, Monday to Sunday, 8:00am-6:00pm</i>	<i>North side, following the kerb line 24.5 metres west of its intersection with Moxham Avenue (Grid Coordinates X= 1,752,331.55m, Y= 5,425,065.13m) and extending in a westerly direction for 9.0 metres.</i>
j.	Wigan Street, Te Aro (TR71-20) P120 Mobility Parking		
	Delete from Schedule B (Restricted Parking) of the Traffic Resolution Schedule		
	Column One	Column Two	Column Three
	Wigan Street	<i>Mobility parking - displaying an operation mobility permit only, P120 Maximum, Monday to Thursday 8:00am - 6:00pm, Friday 8:00am - 8:00pm, Saturday 8:00am - 6:00pm.</i>	<i>South side, commencing 112.1 metres west of its intersection with Taranaki Street (Grid coordinates x= 1748735.0 m, y= 5426809.9 m), and extending in a westerly direction following the southern kerb line for 5 metres. (1 parallel mobility parking space)</i>
	Add to Schedule B (Restricted Parking) of the Traffic Resolution Schedule		
	Column One	Column Two	Column Three
	Wigan Street	<i>Mobility parking - displaying an operation mobility permit only, P120</i>	<i>South side, commencing 102.5 metres from the intersection between Wigan Street and Taranaki Street (Grid Coordinates</i>

Table of Traffic Resolutions Legal Description RPC 19 May 2020

		<i>Maximum, Monday to Thursday 8:00am - 6:00pm, Friday 8:00am - 8:00pm, Saturday and Sunday 8:00am - 6:00pm.</i>	<i>x= 1748734.50, y=5426810.69) and extending for 6.5 metres along the southern kerb line in a westerly direction.</i>
k.	Thorndon Quay, Pipitea (TR72-20) Diplomatic Parking		
	Delete from Schedule F (Metered Parking) of the Traffic Resolution Schedule		
	Column One	Column Two	Column Three
	Thorndon Quay	<i>Metered parking, P120 Maximum, Monday to Sunday 8:00am - 6:00pm.</i>	<i>West side, following the kerbline 440.5 metres north of its intersection with Davis Street (Grid coordinates x= 1749377.0 m, y= 5429242.3 m), and extending in a northerly direction for 19 metres. (6 angled parking spaces)</i>
	Add to Schedule F (Metered Parking) of the Traffic Resolution Schedule		
	Column One	Column Two	Column Three
	Thorndon Quay	<i>Metered parking, P120 Maximum, Monday to Sunday 8:00am - 6:00pm.</i>	<i>West side, following the kerbline 440.5 metres north of its intersection with Davis Street (Grid coordinates x= 1749377.0 m, y= 5429242.3 m), and extending in a northerly direction for 16 metres. (5 angled parking spaces)</i>
	Add to Schedule B (Restricted Parking) of the Traffic Resolution Schedule		
	Column One	Column Two	Column Three
	Thorndon Quay	<i>DC, CC, FC registered vehicles parking, Monday to Friday, 8:00am-6:00pm</i>	<i>West side, following the kerbline 456.5 metres north of its intersection with Davis Street (Grid coordinates x= 1749377.0 m, y= 5429242.3 m), and extending in a northerly direction for 3 metres. (one angle park)</i>
l.	Oriental Parade (Freyberg Pool and Fitness Centre Carpark)(TR 76-20) P240 Metered Parking		
	Delete from Schedule F (Metered Parking) of the Traffic Resolution Schedule		
	Column One	Column Two	Column Three
	Oriental Parade (Freyberg Pool & Fitness Centre Carpark)	<i>Metered Parking, P240 Maximum, Monday to Thursday 8:00am – 6:00pm, Friday 8:00am – 8:00pm,</i>	<i>Commencing 5 metres west of the north-eastern corner of the parking area (Grid Coordinates x= 1,749,863.7 m, y= 5,427,479.3 m), and extending in a westerly direction following the formed</i>

Table of Traffic Resolutions Legal Description RPC 19 May 2020

		<i>Saturday and Sunday 8:00am – 6:00pm</i>	<i>sealed section for 5 metres. (2 angled parking spaces)</i>
	Add to Schedule F (Metered Parking) of the Traffic Resolution Schedule		
	Column One	Column Two	Column Three
	<i>Oriental Parade (Freyberg Pool & Fitness Centre Carpark)</i>	<i>Metered Parking, P240 Maximum, Monday to Thursday 8:00am – 6:00pm, Friday 8:00am – 8:00pm, Saturday and Sunday 8:00am – 6:00pm</i>	<i>North side commencing 5 metres west of the north-eastern corner of the parking area (Grid coordinates X= 1,749,863.7 m, Y= 5,427,479.3 m), and extending in a westerly direction following the kerbline for 17 metres. (7 angled parking spaces)</i>
	<i>Oriental Parade (Freyberg Pool & Fitness Centre Carpark)</i>	<i>Metered Parking, P240 Maximum, Monday to Thursday 8:00am – 6:00pm, Friday 8:00am – 8:00pm, Saturday and Sunday 8:00am – 6:00pm</i>	<i>West side, commencing 71 metres north of its south western corner (Grid Coordinates X=1,749,872.6m, Y=5,427,395.2m) and extending in a northerly direction following the western kerbline for 6.7 metres. (3 angled spaces)</i>

We are proposing a change in your area

 Absolutely Positively
Wellington City Council
 Me Heke Ki Pōneke

Kia ora,

You are receiving this leaflet as **we would like to inform you of a proposed change** we are making in or around your neighbourhood/place of business.

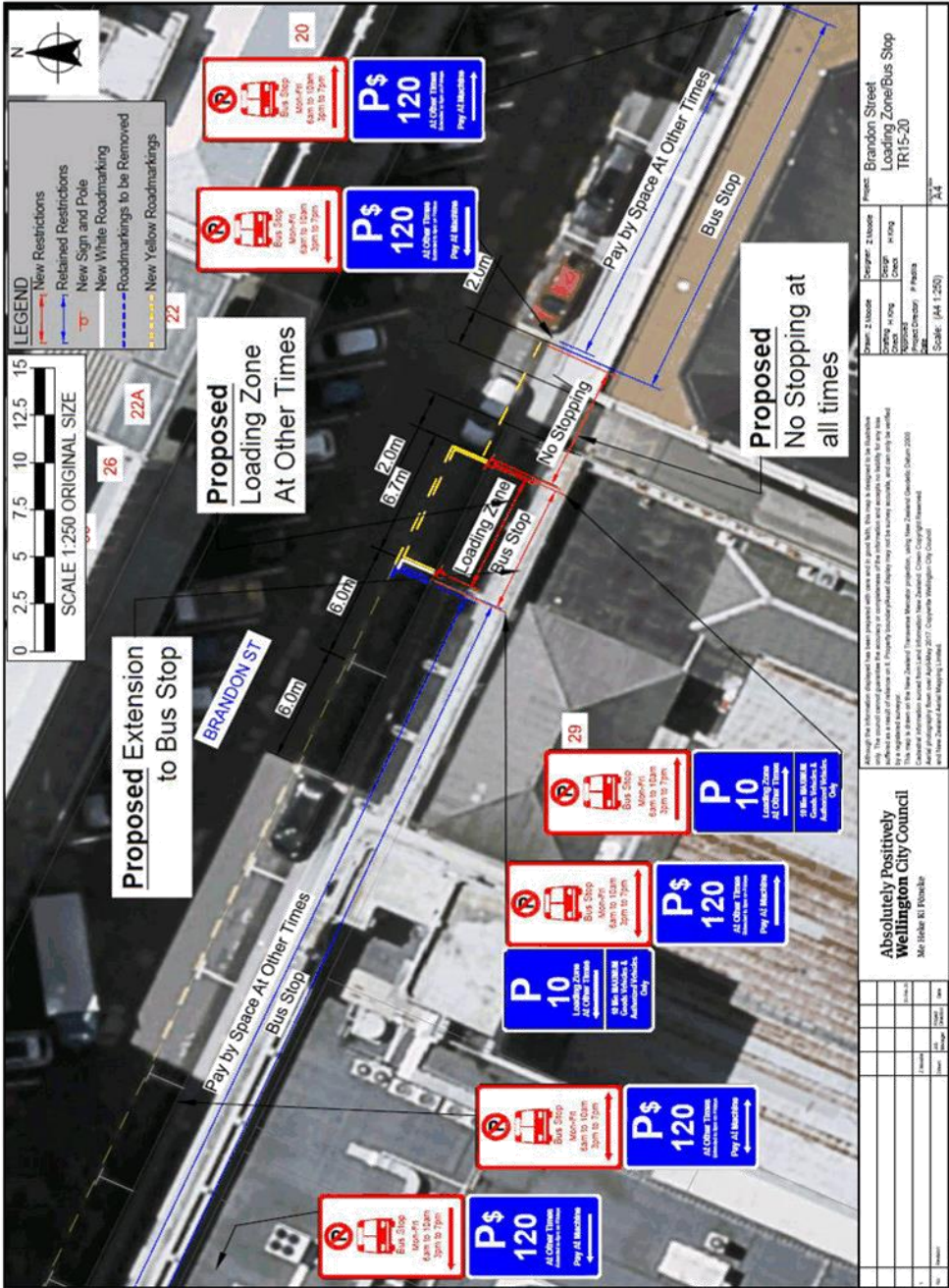
Proposal:

What we'd like to do	<ul style="list-style-type: none"> Extend a bus stop and reconfigure a redundant driveway to a time restricted loading zone
Why we are proposing the change	<ul style="list-style-type: none"> A business owner on the street has requested the installation of a loading zone parking in place of the redundant driveway. To improve accessibility and safety at bus stops and provide a loading zone for local business at other times.
Location – where we propose to make the change	<ul style="list-style-type: none"> Outside 29 Brandon Street, Wellington Central.
Impact	<ul style="list-style-type: none"> No change in parking - Loading zone only. Ensuring bus stop is clear during operating times.
Additional Information	<ul style="list-style-type: none"> To view the legal description for this Traffic Resolution, an electronic copy of the report will be available on the Councils website from 9.00am Friday 28 February 2020 at http://wellington.govt.nz/have-your-say/public-input/consultations/open-consultations, or you can call (04) 499 4444 and we will send one out to you.
Reference	<ul style="list-style-type: none"> TR15-20 Loading Zone/ Bus Stop Class Restriction
Feedback	<p>If you would like to provide us with specific feedback, you can do so by filling out an online submission form, downloading a printable submission form at http://wellington.govt.nz/have-your-say/public-input/consultations/open-consultations, or by emailing us on trfeedback@wcc.govt.nz. Please note if you are giving feedback the consultation period opens 9.00am 28 February 2020 and finishes 5.00pm Friday 13 March 2020.</p>
Next Steps	<ol style="list-style-type: none"> Feedback collated by Monday 16 March 2020. The proposal will go to Regulatory Processes Committee on Wednesday 15 April 2020 (Due to Covid-19 and the restrictions in place this report has been rescheduled). If approved, the proposal will be installed within the next 3 months.

We are proposing a change in your area

Absolutely Positively
Wellington City Council
Me Heke Ki Pōneke

Traffic Resolution Plan: TR15-20 Brandon Street, Wellington Central – Loading Zone/Bus Stop Class Restriction



We are proposing a change in your area

 Absolutely Positively
Wellington City Council
 Me Heke Ki Pōneke

Legal Description:

Delete from Schedule D (No Stopping) of the Traffic Restrictions Schedule

Column One	Column Two	Column Three
Brandon Street	No Stopping, at all times	South side, following the kerbline 36.7 metres northwest of its intersection with Featherston Street (Grid Coordinates X=1748793.747 m, Y=5428245.075 m) and extending in a north-westerly direction for 6.7 metres.

Add to Schedule B (Class Restricted) of the Traffic Restrictions Schedule

Column One	Column Two	Column Three
Brandon Street	Bus Stop Monday to Friday 6am – 10am, 3pm – 7pm	South side, following the kerbline 36.7 metres northwest of its intersection with Featherston Street (Grid Coordinates X=1748793.747 m, Y=5428245.075 m) and extending in a north-westerly direction for 6.7 metres.
Brandon Street	Loading Zone P10, Monday to Friday 10:00am - 3:00pm, Saturday and Sunday 8:00am - 6:00pm, Goods Vehicles and Authorised Vehicles Only	South side, following the kerbline 36.7 metres northwest of its intersection with Featherston Street (Grid Coordinates X=1748793.747 m, Y=5428245.075 m) and extending in a north-westerly direction for 6.7 metres.

Prepared By: Zackary Moodie (Transport Engineer)

Approved By: Charles Kingsford (Principal Transport Engineer)

Date: 27/03/2020

No feedback received.

We are proposing a change in your area

Absolutely Positively
Wellington City Council
Me Heke Ki Pōneke

Kia ora,

You are receiving this leaflet as **we would like to inform you of a proposed change** we are making in or around your neighbourhood

Proposal:

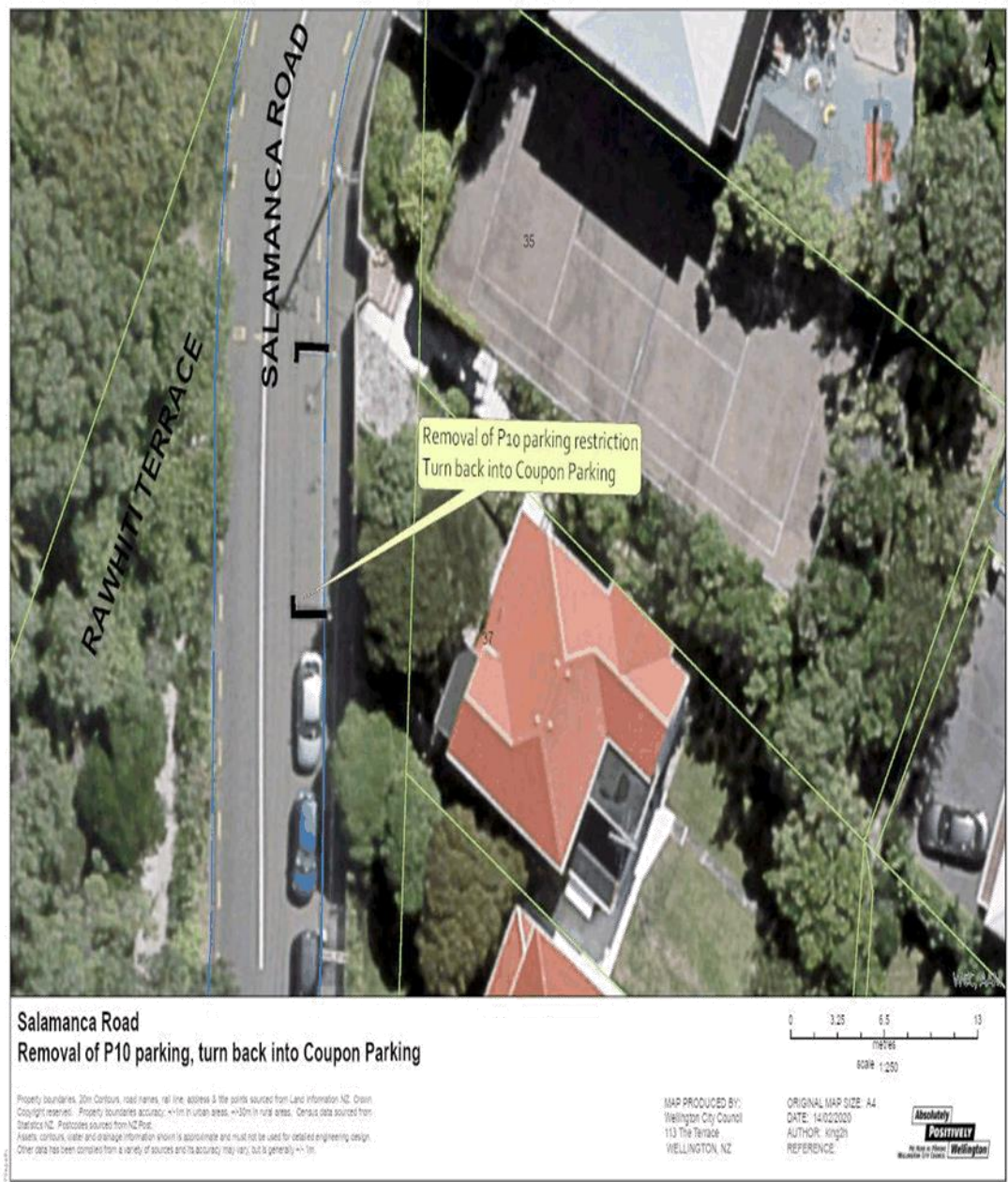
What we'd like to do	<ul style="list-style-type: none"> Change two P10 parks to coupon parking.
Why we are proposing the change	<ul style="list-style-type: none"> A request was made to remove P10 parking by a member of the public who utilises coupon parking in this area. The childcare centre has closed down and the time restricted parking is no longer required.
Location – where we propose to make the change	<ul style="list-style-type: none"> Outside 37 Salamanca Road, Kelburn.
Impact	<ul style="list-style-type: none"> Changing two P10 into two coupon parks, to meet current parking needs.
Additional Information	<ul style="list-style-type: none"> To view the legal description for this Traffic Resolution, an electronic copy of the report will be available on the Councils website from 9.00am Friday 28 February 2020 at http://wellington.govt.nz/have-your-say/public-input/consultations/open-consultations, or you can call (04) 499 4444 and we will send one out to you.
Reference	<ul style="list-style-type: none"> TR53-20 - Time Limited - P10 to Coupon Parking.
Feedback	<p>If you would like to provide us with specific feedback, you can do so by filling out an online submission form, downloading a printable submission form at http://wellington.govt.nz/have-your-say/public-input/consultations/open-consultations, or by emailing us on trfeedback@wcc.govt.nz. Please note if you are giving feedback the consultation period opens 9.00am 28 February 2020 and finishes 5.00pm Friday 13 March 2020.</p>
Next Steps	<ol style="list-style-type: none"> Feedback collated by Monday 16 March 2020. The proposal will go to Regulatory Processes Committee on Wednesday 15 April 2020 (Due to Covid-19 and the restrictions in place this report has been rescheduled). If approved, the proposal will be installed within the next 3 months.

We are proposing a change in your area

Absolutely Positively
Wellington City Council

Me Heke Ki Pōneke

Traffic Resolution Plan: TR53-20 Salamanca Road, Kelburn – Time Limited - P10 to Coupon Parking



We are proposing a change in your area

Absolutely Positively
Wellington City Council
Me Heke Ki Pōneke

Legal Description:

Delete from Schedule A (Time Limited) of the Traffic Resolution Schedule

Column One	Column Two	Column Three
<i>Salamanca Road</i>	<i>P10, Monday – Friday 8am to 6pm</i>	<i>East side, commencing 78 metres north of its intersection with Gladstone Terrace and extending in a northerly direction following the eastern kerbline for 11 metres.</i>

Prepared By: Zackary Moodie **(Transport Engineer)**
Approved By: Charles Kingsford **(Principal Transport Engineer)**
Date: 27/03/2020

No feedback received.

We are proposing a change in your area

 Absolutely Positively
Wellington City Council
 Me Heke Ki Pōneke

Kia ora,

You are receiving this leaflet as **we would like to inform you of a proposed change** we are making in or around your neighbourhood/place of business.

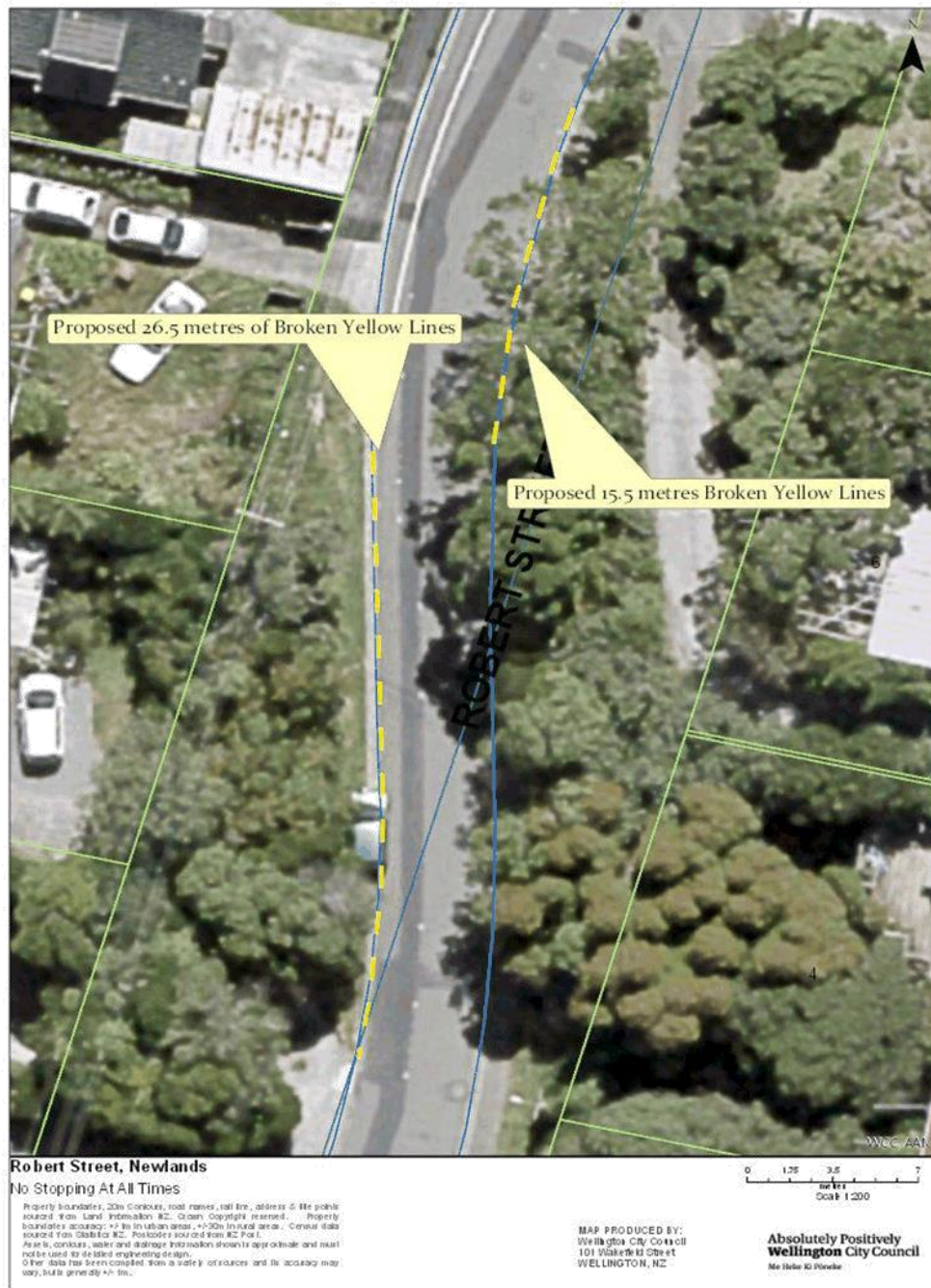
Proposal:

What we'd like to do	<ul style="list-style-type: none"> Install 42 metres of broken yellow lines on a narrow section of Robert Street.
Why we are proposing the change	<ul style="list-style-type: none"> To improve safety and accessibility for residents on Robert Street by improving the sightlines of vehicles travelling along Robert Street. This Officer recommendation follows a request from a local resident for Broken Yellow Lines to be installed on Robert Street.
Location – where we propose to make the change	<ul style="list-style-type: none"> 5 – 11 Robert Street, Newlands
Impact	<ul style="list-style-type: none"> Improved safety and accessibility for residents and road users on Robert Street. Loss of 7 parking spaces.
Additional Information	<ul style="list-style-type: none"> To view the legal description for this Traffic Resolution, an electronic copy of the report will be available on the Council's website from 9.00am Tuesday 3 March 2020 at http://wellington.govt.nz/have-your-say/public-input/consultations/open-consultations, or you can call (04) 499 4444 and we will send one out to you.
Reference	<ul style="list-style-type: none"> TR54-20 - No Stopping At All Times.
Feedback	<p>If you would like to provide us with specific feedback, you can do so by filling out an online submission form, downloading a printable submission form at http://wellington.govt.nz/have-your-say/public-input/consultations/open-consultations, or by emailing us on trfeedback@wcc.govt.nz. Please note if you are giving feedback the consultation period opens 9.00am Tuesday 3 March 2020 and finishes 5.00pm Monday 16 March 2020.</p>
Next Steps	<ol style="list-style-type: none"> Feedback collated by Monday 16 March 2020. The proposal will go to Regulatory Processes Committee on Wednesday 15 April 2020 (Due to Covid-19 and the restrictions in place this report has been rescheduled) If approved, the proposal will be installed within the next 3 months.

We are proposing a change in your area

Absolutely Positively
Wellington City Council
Me Heke Ki Pōneke

Traffic Resolution Plan: TR 54-20 Robert Street, Newlands – No Stopping At All Times



We are proposing a change in your area

 Absolutely Positively
Wellington City Council
 Me Heke Ki Pōneke

Legal Description:

Add to Schedule D (No Stopping) of the Traffic Resolution Schedule

Column One	Column Two	Column Three
Robert Street	<i>No Stopping At All Times</i>	<i>East side, commencing 74 metres north of its intersection with Glanmire Road (Grid Coordinates X=1,752,667.45m Y=5,434,410.68m) and extending in a northerly direction following the eastern kerbline for 15.5 metres.</i>
Robert Street	<i>No Stopping At All Times</i>	<i>West side, commencing 54.5 metres north of its intersection with Glanmire Road (Grid Coordinates X=1,752,655.02m Y=5,434,405.4m) and extending in a northerly direction following the western kerbline for 26.5 metres.</i>

Prepared By: Alastair Helm **(Transport Engineering Assistant)**
Approved By: Charles Kingsford **(Principal Transport Engineer)**
Date: 27/03/2020

FEEDBACK RECEIVED

Absolutely Positively
Wellington City Council
Me Heke Ki Pōneke

Feedback Received:

Name: Gary Klocek
Suburb: Newlands
Agree: Yes

In addition to the existing proposal, I would like consideration given to commence the broken yellow lines on the **eastern side** of Robert Street approx. 35.00 meters from Glanmire Road (beside the driveway of 2 Robert Street). The narrowest section of Robert Street (approx. 4.90 m to 5.00 m wide) would then have no parking on either side. This will ensure ease of access for Ambulances, Fire Trucks (and commercial delivery vehicles) and enable resident's vehicles, of numbers **4, 5a, 5b, 7** and **9** to enter and exit their properties safely and without obstruction.

Officer's response:

Thank you for your feedback regarding the proposal for Broken Yellow Lines on Robert Street. At this stage we will be recommending the current no stopping proposals for Committee approval. The request for additional no stopping will require a separate assessment and an officer will contact you in due course.

Name: Bruce Frost
Suburb: Newlands
Agree: Yes

Absolutely spot on. This has been needed for some time. As I am involved with the local Fire Brigade I have been concerned that quite often Fire Appliances would not be able to access most houses in the street due to parked cars. Regardless of this issue the road is simply too narrow to have cars etc. parked there.

On a separate issue and while you have the "yellow paint" out maybe you could reconsider my submission some time ago to stop vehicles parking too close to the corner of Newlands and Glanmire road intersection on the North Eastern side. Particularly when turning right out of Glanmire road it is very difficult to see traffic approaching from the north.

Officer's response:

Thank you for your feedback regarding the proposal for Broken Yellow Lines on Robert Street. At this stage we will be recommending the current no stopping proposals for Committee approval. The request for additional no stopping on the corner of Glanmire and Newlands Road is outside of the scope of this proposal and will require a separate assessment. An officer will contact you in due course.

Name: Stuart Cross
Suburb: Newlands
Agree: Yes

This will greatly improve safety and visibility on the street, which currently has many cars parking on the road requiring weaving. Sight lines are currently impaired at times when cars are parked on certain sides of the road, and this appears to address that. As a resident of Robert Street, I'm

FEEDBACK RECEIVED

Absolutely Positively
Wellington City Council
Me Heke Ki Pōneke

unaware of any houses that do not have off-street parking, additionally there is ample parking at the end of the street, which while in use during school hours/drop offs/pickups, is typically vacant during the hours that residents are likely to require parking spaces.

Robert St currently experiences high levels of car movements during school drop off and pick up time, and may also see increased traffic flow during weekends once the development at Newlands Park is complete (as Robert Street provides easy access to Newlands Park).

Name: Katrin Eickhorst
Suburb: Newlands
Agree: Yes

I am the resident of 12 Robert Street.

I received your notice with proposed change of parking restrictions in Robert Street to ensure safety for pedestrians and other road users.

Re proposed changes:

I very much welcome plans for no stopping areas to be extended as suggested. As a resident, parking vehicles often associated with Newlands and Bellevue Schools, seriously compromise sight lines when accessing/exiting property drives. Looking forward to safer navigate this street.

I searched for online feedback option, but the website is not easy to navigate. It was sending me around a cul-de-sac!

Officer's response:

Thank you for your feedback regarding navigating our website. WCC has a dedicated customer service team to help when you need it and welcomes the opportunity to assist you at any time.

Name: Owen Hughes
Suburb: Newlands
Agree: Yes

I support the proposed change.

It will result in better visibility for our deceptively curved - and surprisingly busy - street.

... and therefore enhance traffic safety.

We are proposing a change in your area

Absolutely Positively
Wellington City Council
Me Heke Ki Pōneke

Kia ora,

You are receiving this leaflet as **we would like to inform you of a proposed change** we are making in or around your neighbourhood/place of business.

Proposal:

What we'd like to do	<ul style="list-style-type: none"> Introduce P5 Time Limited Restriction for a pickup and drop-off zone. Formalise 22.4 metres No Stopping At All Times restrictions on Clyde Street near the intersection with Thames Street.
Why we are proposing the change	<ul style="list-style-type: none"> Officers recommend these restrictions following a request from the School Principal to provide a safer pickup and drop-off zone for the school. To improve public safety and accessibility.
Location – where we propose to make the change	<ul style="list-style-type: none"> Outside 121a Clyde Street, Island Bay.
Impact	<ul style="list-style-type: none"> Improved safety for students near Island Bay School.
Additional Information	<ul style="list-style-type: none"> To view the legal description for this Traffic Resolution, an electronic copy of the report will be available on the Councils website from 9.00am Friday 28 February 2020 at http://wellington.govt.nz/have-your-say/public-input/consultations/open-consultations, or you can call (04) 499 4444 and we will send one out to you.
Reference	<ul style="list-style-type: none"> TR62-20 - P5 Time Limited Restriction & Formalise No Stopping At All Times.
Feedback	<p>If you would like to provide us with specific feedback, you can do so by filling out an online submission form, downloading a printable submission form at http://wellington.govt.nz/have-your-say/public-input/consultations/open-consultations, or by emailing us on trfeedback@wcc.govt.nz. Please note if you are giving feedback the consultation period opens 9.00am 28 February 2020 and finishes 5.00pm Friday 13 March 2020.</p>
Next Steps	<ol style="list-style-type: none"> Feedback collated by Monday 16 March 2020. The proposal will go to Regulatory Processes Committee on Wednesday 15 April 2020 (Due to Covid-19 and the restrictions in place this report has been rescheduled). If approved, the proposal will be installed within the next 3 months.

**Absolutely Positively
Wellington City Council**
Me Heke Ki Pōneke

THAMES STREET

CLYDE STREET

Formalise No Stopping Restrictions (22.4m)

Install Sign:
P5
8:30am - 9:00am
2:45pm - 3:15pm
Mon - Fri

Install Sign:
P5
8:30am - 9:00am
2:45pm - 3:15pm
Mon - Fri

Install Parking Markings. Each parking space 5.5m. Overall length 11m

121a Clyde Street, Island Bay
P5 Pickup/Dropoff Zone

0 1.25 2.5 5 7
meters
Scale 1:150

ATU/2019/01 - 2019/01/20

We are proposing a change in your area

Absolutely Positively
Wellington City Council
Me Heke Ki Pōneke

Legal Description:

Add to Schedule D (no stopping restrictions) of the Traffic Resolution Schedule

Column One	Column Two	Column Three
Clyde Street	No Stopping, At All Times	East side, commencing from its intersection with Thames Street (Grid Coordinates X= 1,748,506.9m, Y= 5,422,497.00 m) and extending in a southerly direction for a total of 22.4 metres.

Add to Schedule A (Time Limited) of the Traffic Resolution Schedule

Column One	Column Two	Column Three
Clyde Street	P5 8:30am – 9:00am 2:45pm – 3:15pm Mon – Fri	East side, commencing 22.4m south of its intersection with Thames Street (Grid Coordinates X= 1,748,506.9m, Y= 5,422,497.00 m) and extending in a southerly direction for a total of 11 metres (2x parallel parks)

Prepared By: Amin Shahin (Transport Engineer)

Approved By: Charles Kingsford (Principal Transport Engineer)

Date: 27/03/2020

We are proposing a change in your areaAbsolutely Positively
Wellington City Council
Me Heke Ki Pōneke**Feedback Received:**

Name: Paul Dalley
Suburb: Island Bay
Agree: No

I am a resident who lives opposite the school. I have one child at the school and have had 2 other children also as students. I think the main priority of any proposed changes should be to improve Safety. The painted yellow lines do not stop people parking and blocking safe views to and from the pedestrian crossing, cars regularly park on them. The most useful thing to do would be to install raised "islands" to stop people parking in the NO PARKING area. The no parking area does not need extending to improve safety, you just need to make it impossible for busy, impatient and careless parents to park in it, as they often do.

Adding two additional P5 parks will have no useful effect. There are something like 600 students at Island Bay School and the essential problem is that a large number of their parents expect to be able to drive to the doorstep of the school for drop off and pickup. Adding two P5 parks will have no meaningful effect on this problem, it will merely inconvenience the residents who already have to contend with a huge volume of parent's traffic twice a day. The expectation that parents can drive to the school doorstep is both unreasonable and unsustainable and needs to be discouraged, not supported. The council should incentivise: walking, cycling, public transport, "walking buses" and other healthy and sustainable means of getting kids to and from school. If you intend to make two P5 parks then these will only have any effect if you also intend to enforce them twice daily throughout the school term, very few parents will have any expectation of getting a parking ticket in a suburban area.

In summary I would support making the NO PARKING area a HARD no parking zone, but not changing any of the surrounding parks. Please continue to help support healthy and sustainable transport, don't support more suburban SUV's racing around town to pick up kids who should be cycling.

Officer's response:

Thank you for your feedback.

The P5 car parks are intended to provide better turnover of car parks during the busy pick-up and drop-off times for the school. These restrictions have had good results at other schools.

Thankyou for bringing to our attention the illegal parking on the broken yellow lines, this is an enforcement issue which we will pass on to Parking Services (WCC) to enforce. The recommendation to formalise the 22.4 metres of No Stopping At All Times restrictions on Clyde Street adjacent to the zebra crossing and near the intersection with Thames Street will legalise these restrictions and assist Parking Services in keeping this area clear of parked cars at all times. Installing raised islands is currently out of the scope of this proposal. If however, parking continues to take place on the

We are proposing a change in your area

Absolutely Positively
Wellington City Council
Me Heke Ki Pōneke

broken yellow lines officers may consider this in the future. The first action, however is to increase enforcement of the no stopping restrictions.

We are proposing a change in your area

 Absolutely Positively
Wellington City Council
 Me Heke Ki Pōneke

Kia ora,

You are receiving this leaflet as **we would like to inform you of a proposed change** we are making in or around your neighbourhood/place of business.

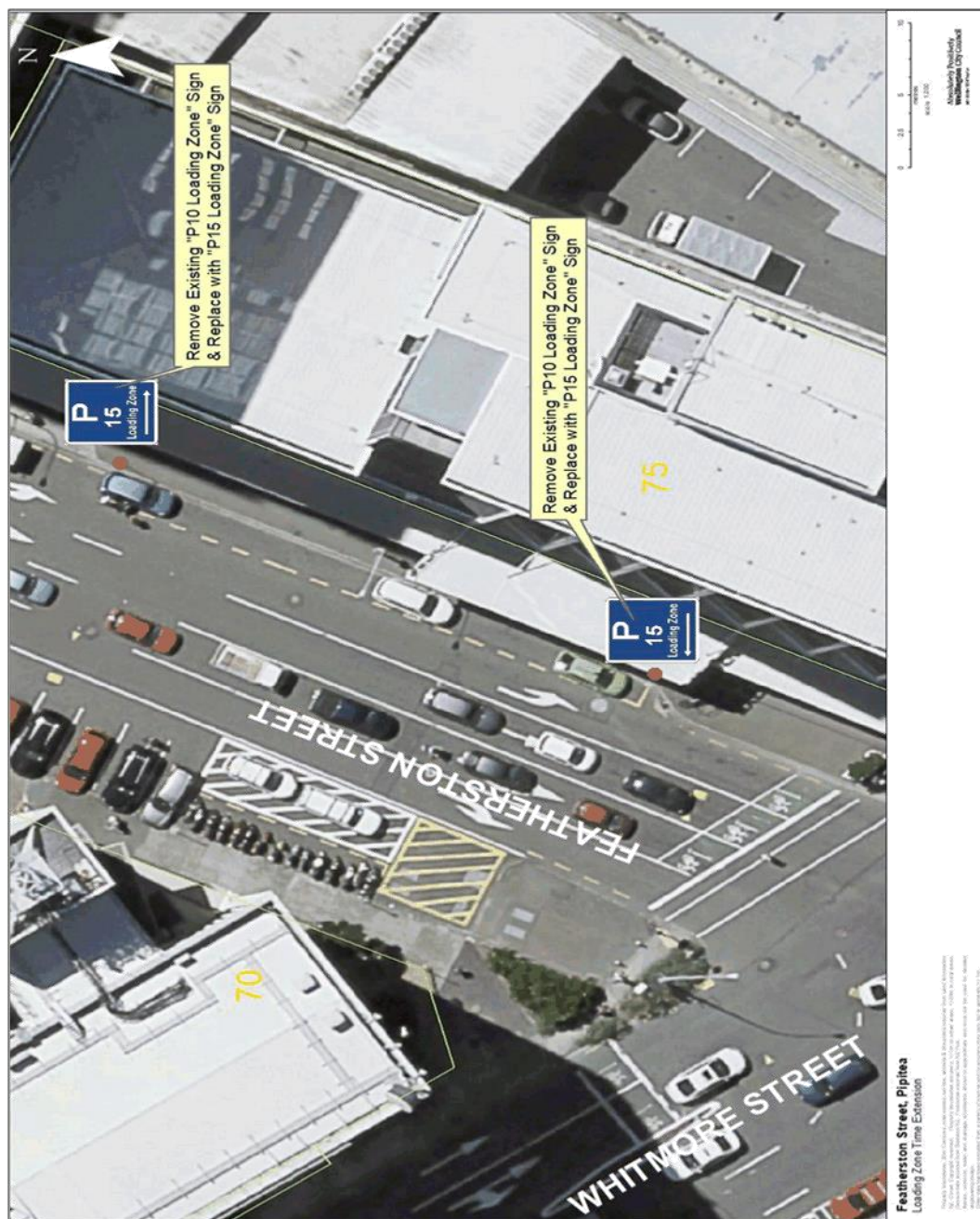
Proposal:

What we'd like to do	<ul style="list-style-type: none"> Extend Loading Zone time restriction from P10 to P15.
Why we are proposing the change	<ul style="list-style-type: none"> The proposal was requested by a local business that regularly uses the loading zone. To give users more time whilst using the loading zone.
Location – where we propose to make the change	<ul style="list-style-type: none"> 75 Featherston Street, Pipitea, Wellington.
Impact	<ul style="list-style-type: none"> Extended time restriction will provide better service for local businesses using the loading zone.
Additional Information	<ul style="list-style-type: none"> To view the legal description for this Traffic Resolution, an electronic copy of the report will be available on the Councils website from 9.00am Friday 28 February 2020 at http://wellington.govt.nz/have-your-say/public-input/consultations/open-consultations, or you can call (04) 499 4444 and we will send one out to you.
Reference	<ul style="list-style-type: none"> TR64-20 - Loading Zone Time Restriction.
Feedback	<p>If you would like to provide us with specific feedback, you can do so by filling out an online submission form, downloading a printable submission form at http://wellington.govt.nz/have-your-say/public-input/consultations/open-consultations, or by emailing us on trfeedback@wcc.govt.nz. Please note if you are giving feedback the consultation period opens 9.00am 28 February 2020 and finishes 5.00pm Friday 13 March 2020.</p>
Next Steps	<ol style="list-style-type: none"> Feedback collated by Monday 16 March 2020. The proposal will go to Regulatory Processes Committee on Wednesday 15 April 2020 (Due to Covid-19 and the restrictions in place this report has been rescheduled). If approved, the proposal will be installed within the next 3 months.

We are proposing a change in your area

Absolutely Positively
Wellington City Council
Me Heke Ki Pōneke

Traffic Resolution Plan: TR 64-20 Featherston Street, Pipitea – Extend Time Restriction for Loading Zone



We are proposing a change in your area

 Absolutely Positively
Wellington City Council
 Me Heke Ki Pōneke

Legal Description:

Delete from Schedule D (No Stopping, At All Times) of the Traffic Resolution Schedule

Column One	Column Two	Column Three
Featherston Street	Loading zone, P10, At All Times	East side, commencing 105.5 metres south of its intersection with Bunny Street (Grid Coordinates X=1748957.1 m, Y=5428566.2 m) and extending in a southerly direction following the kerbline for 34 metres.

Add to Schedule B (Class Restricted) of the Traffic Resolution Schedule

Column One	Column Two	Column Three
Featherston Street	Loading zone, P15, At All Times	East side, commencing 105.5 metres south of its intersection with Bunny Street (Grid Coordinates X=1748957.1 m, Y=5428566.2 m) and extending in a southerly direction following the kerbline for 34.4 metres.

Prepared By: Amin Shahin (Transport Engineer)

Approved By: Charles Kingsford (Principal Transport Engineer)

Date: 27/03/2020

No feedback received.

We are proposing a change in your area

Absolutely Positively
Wellington City Council
Me Heke Ki Pōneke

Kia ora,

You are receiving this leaflet as **we would like to inform you of a proposed change** we are making in or around your neighbourhood/place of business.

Proposal:

What we'd like to do	<ul style="list-style-type: none"> • Install 7 and 9 metres of broken yellow lines.
Why we are proposing the change	<ul style="list-style-type: none"> • A member of the public, a bus operator and parking wardens have requested No Stopping lines at the entry/exit to the bus stop. • To improve safety when approaching the intersection at The Esplanade and to improve bus accessibility when pulling into the bus stop.
Location – where we propose to make the change	<ul style="list-style-type: none"> • Houghton Bay Road, Houghton Bay – opposite 250 Houghton Bay Road.
Impact	<ul style="list-style-type: none"> • Allowing busses to safely pull into the bus stop. • Improved traffic flow and safety of the adjacent lane by removing parked cars on the approach and exit to the bus stop. • Increased safety for vehicles approaching the intersection. • No loss of parking spaces applicable – 'No Stopping At All Times' restriction applies to an entry and exit taper of a bus stop.
Additional Information	<ul style="list-style-type: none"> • To view the legal description for this Traffic Resolution, an electronic copy of the report will be available on the Councils website from 9.00am Friday 28 February 2020 at http://wellington.govt.nz/have-your-say/public-input/consultations/open-consultations , or you can call (04) 499 4444 and we will send one out to you.
Reference	<ul style="list-style-type: none"> • TR66-20 - No Stopping At All Times.
Feedback	<p>If you would like to provide us with specific feedback, you can do so by filling out an online submission form, downloading a printable submission form at http://wellington.govt.nz/have-your-say/public-input/consultations/open-consultations , or by emailing us on trfeedback@wcc.govt.nz . Please note if you are giving feedback the consultation period opens 9.00am 28 February 2020 and finishes 5.00pm Friday 13 March 2020.</p>
Next Steps	<ol style="list-style-type: none"> 1. Feedback collated by Monday 16 March 2020. 2. The proposal will go to Regulatory Processes Committee on Wednesday 15 April 2020 (Due to Covid-19 and the restrictions in place this report has been rescheduled).

We are proposing a change in your area

Absolutely Positively
Wellington City Council
Me Heke Ki Pōneke

Next Steps	3. If approved, the proposal will be installed within the next 3 months.
------------	--

Traffic Resolution Plan: TR66-20 Houghton Bay Road, Houghton Bay – No Stopping At All Times



We are proposing a change in your area

Absolutely Positively
Wellington City Council
Me Heke Ki Pōneke

Legal Description:

Add to Schedule D (No Stopping Restrictions) of the Traffic Resolution Schedule

Column One	Column Two	Column Three
Houghton Bay Road	No Stopping, At All Times	East side, commencing 2.9 metres north of its intersection with The Esplanade (co-ordinates X=1,749,372.01, Y=5,421,804.17) extending for 9 metres north along the eastern kerb line.
Houghton Bay Road	No Stopping, At All Times	East side, commencing 24.1 metres north from its intersection with The Esplanade (co-ordinates X=1,749,372.01, Y=5,421,804.17) extending North for 7 metres along the eastern kerb line.

Prepared By: Zackary Moodie (Transport Engineer)
Approved By: Charles Kingsford (Principal Transport Engineer)
Date: 27/03/2020

No feedback received.

We are proposing a change in your area

 Absolutely Positively
Wellington City Council
 Me Heke Ki Pōneke

Kia ora,

You are receiving this leaflet as **we would like to inform you of a proposed change** we are making in or around your neighbourhood/place of business.

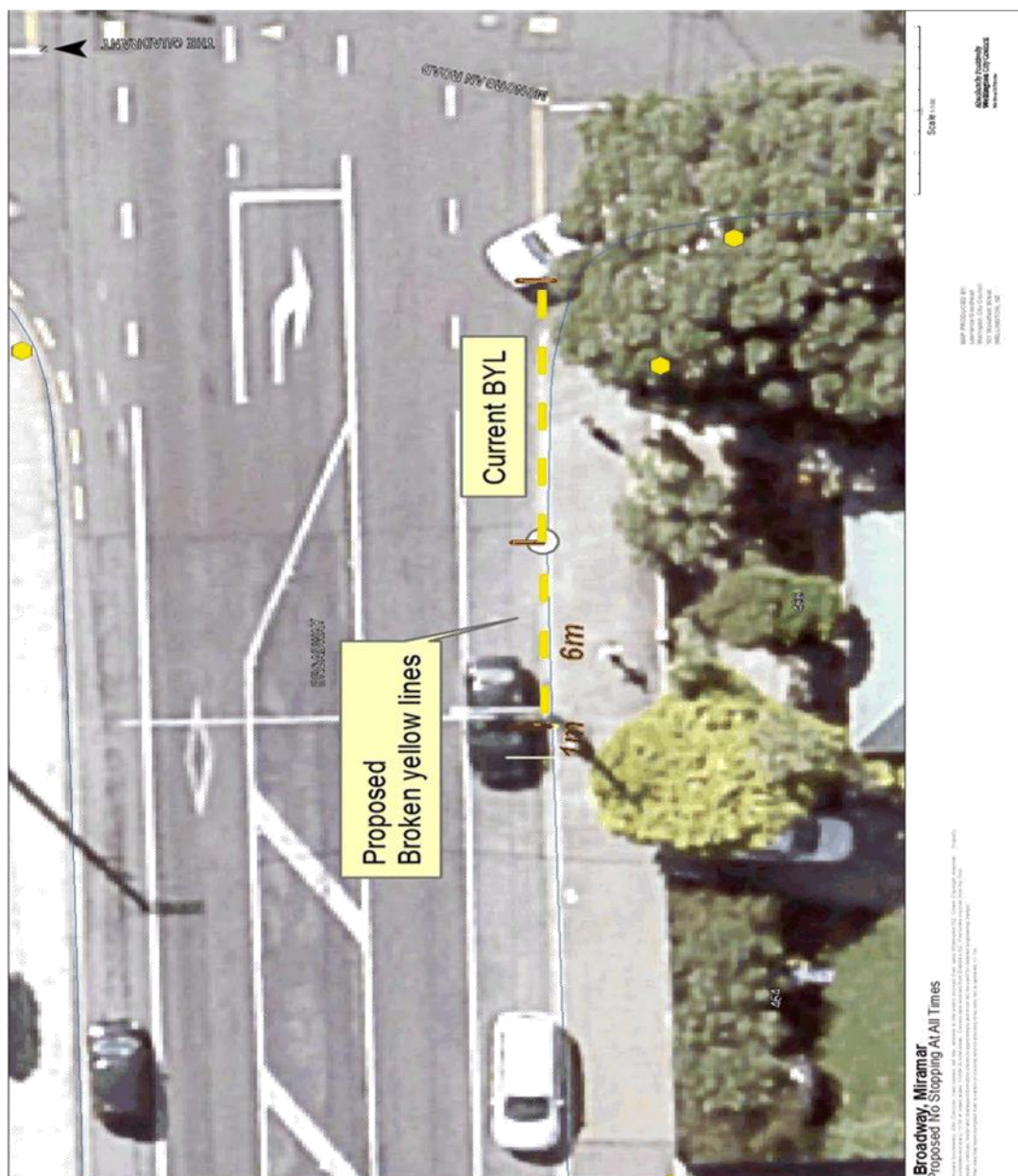
Proposal:

What we'd like to do	<ul style="list-style-type: none"> Install a total of 10.7m of broken yellow lines (BYLs) as shown on the post consultation plan following the feedback that was received.
Why we are proposing the change	<ul style="list-style-type: none"> Officers recommend an extension of the no stopping restriction on Broadway. This follows a request from a resident regarding cars parking too close to the driveway, limiting driver visibility and access. Improve road safety for vehicles exiting from Monorgan Road to Broadway and for road users on Broadway.
Location – where we propose to make the change	<ul style="list-style-type: none"> 464 /466 Broadway, Miramar and at its intersection with Monorgan Road.
Impact	<ul style="list-style-type: none"> Improvement to driver sightlines at the intersection Improve road safety. Loss of 1 parking space.
Additional Information	<ul style="list-style-type: none"> To view the legal description for this Traffic Resolution, an electronic copy of the report will be available on the Councils website from 9.00am Friday 28 February 2020 at http://wellington.govt.nz/have-your-say/public-input/consultations/open-consultations, or you can call (04) 499 4444 and we will send one out to you.
Reference	<ul style="list-style-type: none"> TR67-20 - No Stopping At All Times.
Feedback	<p>If you would like to provide us with specific feedback, you can do so by filling out an online submission form, downloading a printable submission form at http://wellington.govt.nz/have-your-say/public-input/consultations/open-consultations, or by emailing us on trfeedback@wcc.govt.nz. Please note if you are giving feedback the consultation period opens 9.00am 28 February 2020 and finishes 5.00pm Friday 13 March 2020.</p>
Next Steps	<ol style="list-style-type: none"> Feedback collated by Monday 16 March 2020. The proposal will go to Regulatory Processes Committee on Wednesday 15 April 2020 (Due to Covid-19 and the restrictions in place this report has been rescheduled). If approved, the proposal will be installed within the next 3 months.

We are proposing a change in your area

Absolutely Positively
Wellington City Council
Me Heke Ki Pōneke

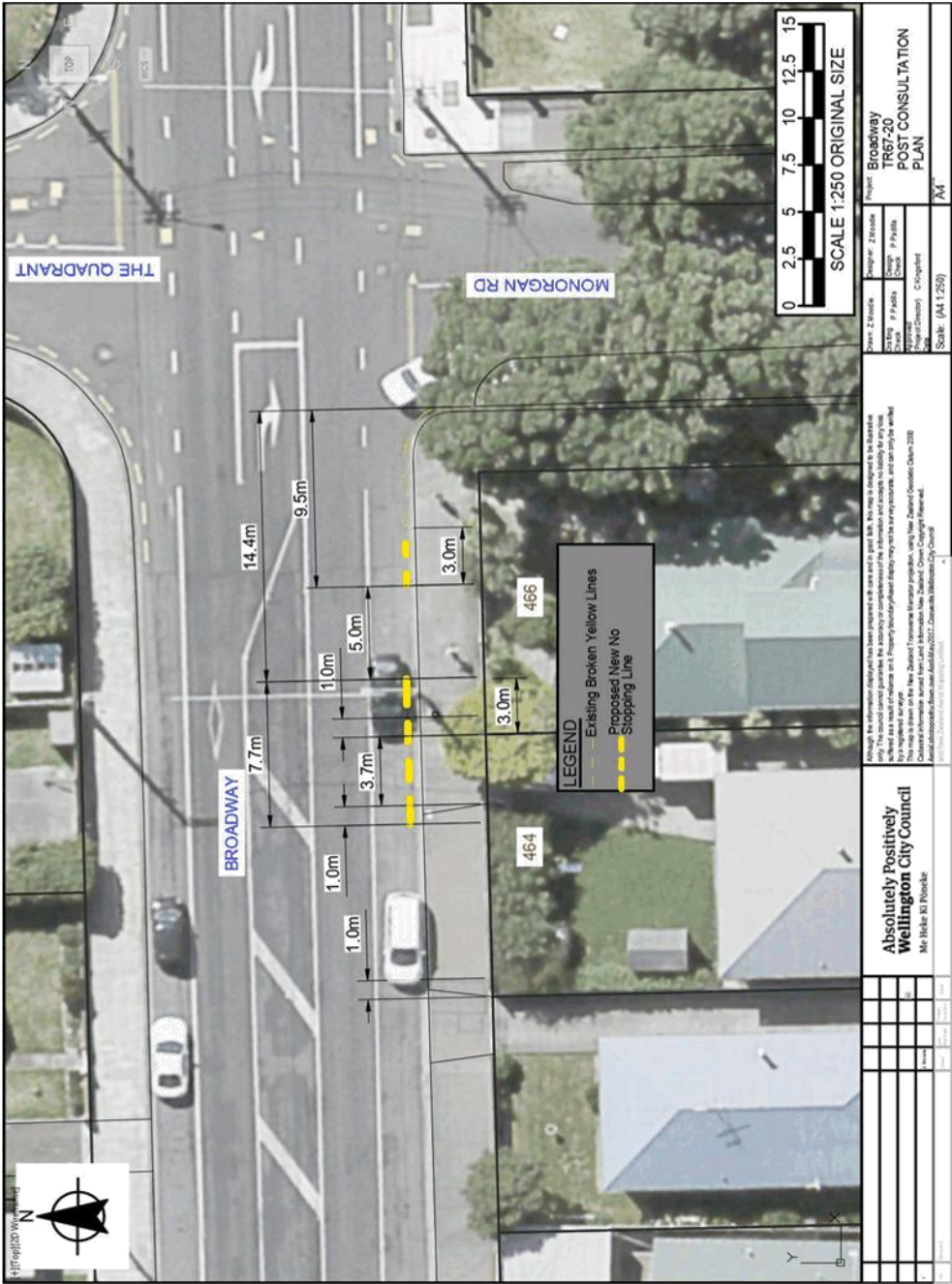
Traffic Consultation Plan: TR 67-20 Broadway, Miramar – No Stopping At All times



We are proposing a change in your area

Absolutely Positively
Wellington City Council
Me Heke Ki Pōneke

POST CONSULTATION PLAN: TR 67-20 Broadway, Miramar – No Stopping At All times



We are proposing a change in your area

Absolutely Positively
Wellington City Council
Me Heke Ki Pōneke

Legal Description:

Add to Schedule D (no stopping restrictions) of the Traffic Resolution Schedule

Column One	Column Two	Column Three
Broadway	No Stopping, At All Times	South side, following the southern kerb line west from its intersection with Monorgan Road (co-ordinates X=1,752,128.82, Y= 5,423,547.37) and extending for 9.5 metres in a westerly direction.
Broadway	No Stopping, At All Times	South side, following the southern kerb line west 14.4 metre from its intersection with Monorgan Road (co-ordinates X=1,752,128.82, Y= 5,423,547.37) and extending for 7.7 metres in a westerly direction.

Prepared By: Zackary Moodie (Transport Engineer)

Approved By: Charles Kingsford (Principal Transport Engineer)

Date: 27/03/2020

FEEDBACK RECEIVED

 Absolutely Positively
Wellington City Council
 Me Heke Ki Pōneke

Feedback Received:

Name: Saskia
Suburb: Miramar
Agree: No

I would like to give formal feedback around this issue. While I can understand the safety concerns around this matter, there is also the very real concern for us (the residents) in this block around parking.

Since the implementation of the 24 hour parking zone along Broadway stopping just before our block, parking outside our houses has become a real issue for this whole block.

While losing one park doesn't sound like a huge problem, with the current parking situation - it will make quite an impact.

If it is necessary to create those yellow lines, perhaps you could consider extending the 24 hour parking zone to include our block so as to ensure that we have access to our on street parking.

Thank you for taking the time to read my concerns.

Officer's response:

Council has reviewed the operation of the 24 hour zone parking scheme and has concluded that the scheme has overall achieved its objectives. At this stage, Council officers are not investigating nor recommending an extension to the boundaries of the current scheme that is in place.

The recommended parking restrictions are to resolve the current access concerns in relation to people parking too close to the driveway.

Name: Robin Boldarin – on behalf of Miramar/Maupuia Progressive Association
Suburb: Miramar
Agree: No

OPPOSE

We have looked closely at the proposed site and have come to the following conclusion, based on the fact that Broadway has road-marked and natural divisions and any alteration could have a run-on effect with neighbouring properties also seeking to exclude parking sites immediately adjacent to their entrances, to oppose this.

Officer's response:

The gap between the existing BYL's and driveway of #464 is insufficient for 2 vehicles causing one to overhang the driveway of #464. Officer's response is to resolve this concern of visibility and access and recommend installing a revised layout change to the restriction as per the post consultation plan attached.

Example of two vehicles parked:



We are proposing a change in your area

Absolutely Positively
Wellington City Council
Me Heke Ki Pōneke

Kia ora,

You have received this leaflet as **we would like to inform you of a proposed change** we are making in or around your neighbourhood / place of business.

Proposal:

What we'd like to do	<ul style="list-style-type: none"> Install 19 and 31 metres of broken yellow lines (BYLs).
Why we are proposing the change	<ul style="list-style-type: none"> To increase safety for residents and road users on the street. Officers recommend the installation of a No Stopping at all times restriction on the inside of two bends, where forward safe stopping sight distances are very limited when cars park in these locations. This recommendation is the result of investigating a road safety concern raised by a resident A safety hazard is created when a cars are parked on the inside of these bends thus forcing passing vehicles into the opposing traffic lane.
Location – where we propose to make the change	<ul style="list-style-type: none"> Totara Road, Miramar – from 147 to 154 on the insides of the bends.
Impact	<ul style="list-style-type: none"> Improve safety and accessibility for residents and road users. A loss of 8 parking spaces (noting that not all the kerb-line is parked on at the current time).
Additional Information	<ul style="list-style-type: none"> Section 6.3 of the Land Transport (Road User) Rule 2004 states that a driver or person in charge of a vehicle must not stop, stand, or park a vehicle on any part of a roadway so close to any corner, bend, rise, dip, traffic island, or intersection as to obstruct or be likely to obstruct other traffic or any view of the roadway to the driver of a vehicle approaching that corner, bend, rise, dip, traffic island, or intersection unless the stopping, standing, or parking is authorised by signs or markings maintained by the road controlling authority. To view the legal description for this Traffic Resolution, an electronic copy of the report will be available on the Councils website from 9.00am Friday 28 February 2020 at http://wellington.govt.nz/have-your-say/public-input/consultations/open-consultations , or you can call (04) 499 4444 and we will send one out to you.
Reference	<ul style="list-style-type: none"> TR69-20 - No Stopping At All Times.

We are proposing a change in your area

 Absolutely Positively
Wellington City Council
 Me Heke Ki Pōneke

Feedback	<p>If you would like to provide us with specific feedback, you can do so by filling out an online submission form, downloading a printable submission form at http://wellington.govt.nz/have-your-say/public-input/consultations/open-consultations, or by emailing us on trfeedback@wcc.govt.nz. Please note if you are giving feedback the consultation period opens 9.00am 28 February 2020 and finishes 5.00pm Friday 13 March 2020.</p>
Next Steps	<ol style="list-style-type: none"> 1. Feedback collated by Monday 16 March 2020. 2. The proposal will go to Regulatory Processes Committee on Wednesday 15 April 2020. (Due to Covid-19 and the restrictions in place this report has been rescheduled). 3. If approved, the proposal will be installed within the next 3 months.

We are proposing a change in your area

Absolutely Positively
Wellington City Council
Me Heke Ki Pōneke

Traffic Resolution Plan: TR69-20 Totara Road, Miramar – No Stopping At All Times



We are proposing a change in your area

 Absolutely Positively
Wellington City Council
 Me Heke Ki Pōneke

Legal Description:

Add to Schedule D (no stopping restrictions) of the Traffic Resolution Schedule

Column One	Column Two	Column Three
Totara Road	No Stopping, at all times	East side of road, commencing 122.1 metres South West of its intersection with Nevay Road (co-ordinates X=1,753,028.53, Y=5,425,916.51) extending for 31 metres in south and eastern direction following the kerb line.
Totara Road	No Stopping, at all times	South side of road, commencing 176.2 metres south -west of its intersection with Nevay Road (co-ordinates, X=1,753,043.48, y= 5,425,892.83), and extending in an east and south direction for 19 metres following the kerb line.

Prepared By: Zackary Moodie **(Transport Engineer)**
Approved By: Charles Kingsford **(Principal Transport Engineer)**
Date: 27/03/2020

FEEDBACK RECEIVED

Absolutely Positively
Wellington City Council
Me Heke Ki Pōneke

Feedback Received:

Name: Robin Boldarin – on behalf of Miramar/Maupuia Progressive Association
Suburb: Miramar
Agree: No

SUPPORT

The above association would like to see an extension to that proposed on the grounds of a more clearly defined distance i.e. Extend the restriction from the driveway of **154** (Totara Road) to the vehicle entry of **147** - western and eastern sides of Totara Road would then run the same distance of exclusion.

Officer's response:

The request for an extension to the no stopping is currently outside the scope of this proposal. The extension of No Stopping will be monitored and investigated as a separate proposal.
Thank you for your feedback.

We are proposing a change in your area

 Absolutely Positively
Wellington City Council
 Me Heke Ki Pōneke

Kia ora,

You are receiving this leaflet as **we would like to inform you of a proposed change** we are making in or around your neighbourhood/place of business.

Proposal:

What we'd like to do	<ul style="list-style-type: none"> • Install a P120 mobility park, Monday to Sunday, 8am-6pm. • Confirm P60 parks (3 spaces).
Why we are proposing the change	<ul style="list-style-type: none"> • The Medical Centre submitted a signed petition that included 3 local businesses requesting a short term mobility park in the area. • To allow mobility parking users access to short term parking near the medical centre, pharmacy and local businesses in the area. • To confirm existing P60 parking restriction.
Location – where we propose to make the change	<ul style="list-style-type: none"> • Outside No. 4 Taurima Street, Hataitai – near Moxham Avenue.
Impact	<ul style="list-style-type: none"> • Accessible parking for mobility users. • Increased turnover of mobility users.
Additional Information	<ul style="list-style-type: none"> • To view the legal description for this Traffic Resolution, an electronic copy of the report will be available on the Councils website from 9.00am Friday 28 February 2020 at http://wellington.govt.nz/have-your-say/public-input/consultations/open-consultations, or you can call (04) 499 4444 and we will send one out to you.
Reference	<ul style="list-style-type: none"> • TR70-20 - P120 Mobility Parking & Confirmation of P60 Parking.
Feedback	<p>If you would like to provide us with specific feedback, you can do so by filling out an online submission form, downloading a printable submission form at http://wellington.govt.nz/have-your-say/public-input/consultations/open-consultations, or by emailing us on trfeedback@wcc.govt.nz. Please note if you are giving feedback the consultation period opens 9.00am 28 February 2020 and finishes 5.00pm Friday 13 March 2020.</p>
Next Steps	<ol style="list-style-type: none"> 1. Feedback collated by Monday 16 March 2020. 2. The proposal will go to Regulatory Processes Committee on Wednesday 15 April 2020 (Due to Covid-19 and the restrictions in place this report has been rescheduled). 3. If approved, the proposal will be installed within the next 3 months.

We are proposing a change in your area

Absolutely Positively
Wellington City Council
Me Heke Ki Pōneke

Traffic Resolution Plan: TR70-20 Taurima Street, Haitaitai – P120 Mobility Parking / Confirm P60 Parking



We are proposing a change in your area

 Absolutely Positively
Wellington City Council
 Me Heke Ki Pōneke

Legal Description:

Add to Schedule A (Time Limited Parking) of the Traffic Resolution Schedule

Column One	Column Two	Column Three
Taurima Street	P60, Monday to Sunday, 8:00am-6:00pm	North side, following the kerb line 33.5 metres west of its intersection with Moxham Avenue (Grid Coordinates X= 1,752,331.55m, Y= 5,425,065.13m) and extending in a westerly direction for 18.0 metres. (3 parallel parks)

Add to Schedule B (Restricted Parking) of the Traffic Resolution Schedule

Column One	Column Two	Column Three
Taurima Street	No stopping except for vehicles displaying an operation mobility card, P120, Monday to Sunday, 8:00am-6:00pm	North side, following the kerb line 24.5 metres west of its intersection with Moxham Avenue (Grid Coordinates X= 1,752,331.55m, Y= 5,425,065.13m) and extending in a westerly direction for 9.0 metres.

Prepared By: Orencio Gueco (Transport Engineer)
Approved By: Charles Kingsford (Principal Transport Engineer)
Date: 27/03/2020

No feedback received.

We are proposing a change in your area

Absolutely Positively
Wellington City Council
Me Heke Ki Pōneke

Kia ora,

You are receiving this leaflet as **we would like to inform you of a proposed change** we are making in or around your neighbourhood/place of business.

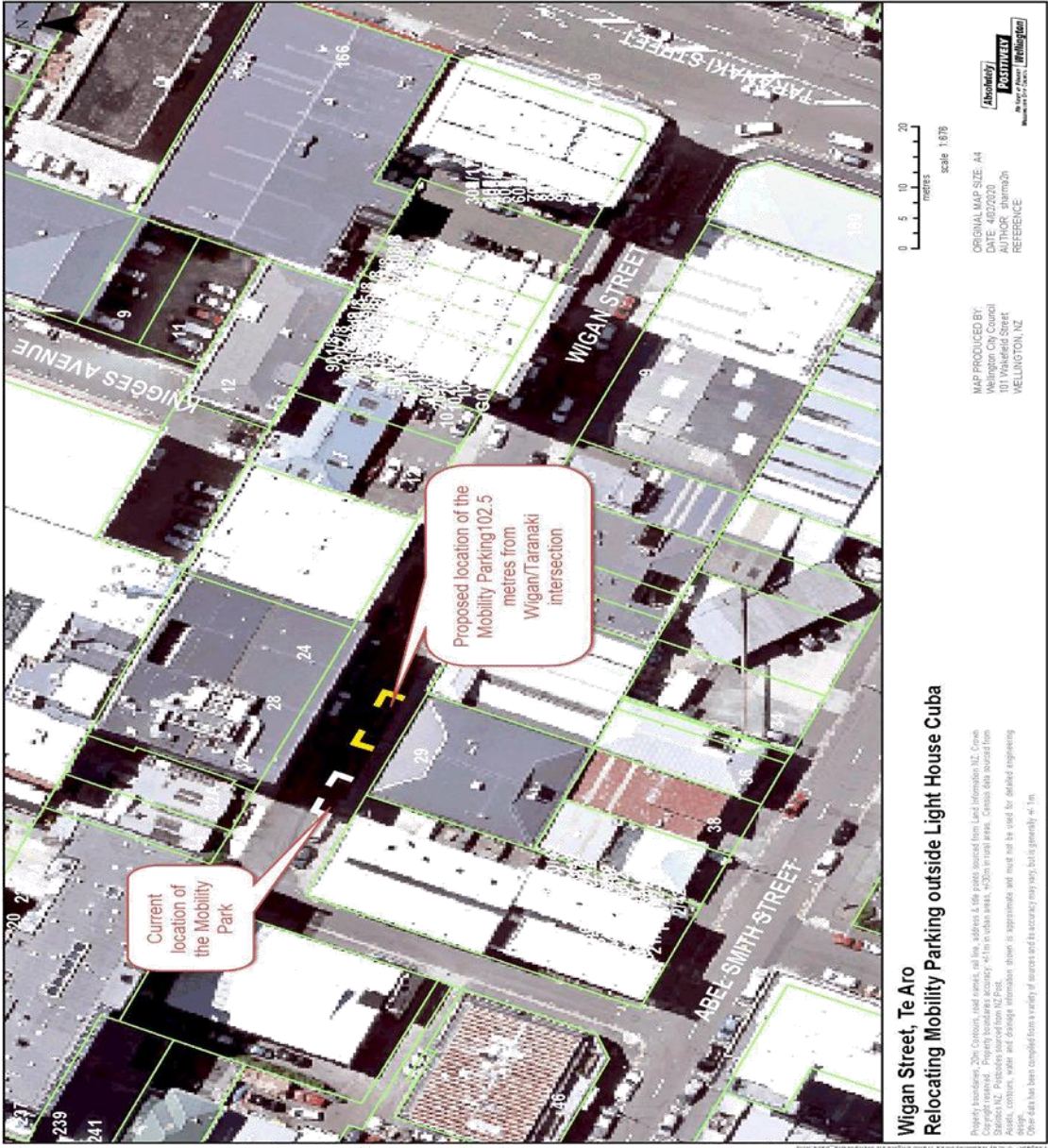
Proposal:

What we'd like to do	<ul style="list-style-type: none"> Relocation of P120 mobility parking.
Why we are proposing the change	<ul style="list-style-type: none"> To improve accessibility to the mobility parking. Our recommendation follows the investigation of concerns raised by two members of the public who advised that the current location of the mobility park causes access difficulty due to the short length of the mobility space and also its positioning directly in front of a cycle park.
Location – where we propose to make the change	<ul style="list-style-type: none"> 29 Wigan Street, Te Aro outside Light House Cinema.
Impact	<ul style="list-style-type: none"> Improved safety and accessibility of drivers using the mobility parking on Wigan Street. No parking loss – park relocation only.
Additional Information	<ul style="list-style-type: none"> To view the legal description for this Traffic Resolution, an electronic copy of the report will be available on the Councils website from 9.00am Friday 28 February 2020 at http://wellington.govt.nz/have-your-say/public-input/consultations/open-consultations, or you can call (04) 499 4444 and we will send one out to you.
Reference	<ul style="list-style-type: none"> TR71-20 - P120 Mobility Parking
Feedback	<p>If you would like to provide us with specific feedback, you can do so by filling out an online submission form, downloading a printable submission form at http://wellington.govt.nz/have-your-say/public-input/consultations/open-consultations, or by emailing us on trfeedback@wcc.govt.nz. Please note if you are giving feedback the consultation period opens 9.00am 28 February 2020 and finishes 5.00pm Friday 13 March 2020.</p>
Next Steps	<ol style="list-style-type: none"> Feedback collated by Monday 16 March 2020. The proposal will go to Regulatory Processes Committee on Wednesday 15 April 2020 (Due to Covid-19 and the restrictions in place this report has been rescheduled). If approved, the proposal will be installed within the next 3 months.

We are proposing a change in your area

Absolutely Positively
Wellington City Council
Me Heke Ki Pōneke

Traffic Resolution Plan: TR71-20 Wigan Street, Te Aro – Mobility Parking



We are proposing a change in your area

Absolutely Positively
Wellington City Council
Me Heke Ki Pōneke

Legal Description:

Delete from Schedule B (Restricted Parking) of the Traffic Resolution Schedule

Column One	Column Two	Column Three
Wigan Street	Mobility parking - displaying an operation mobility permit only, P120 Maximum, Monday to Thursday 8:00am - 6:00pm, Friday 8:00am - 8:00pm, Saturday 8:00am - 6:00pm.	South side, commencing 112.1 metres west of its intersection with Taranaki Street (Grid coordinates x= 1748735.0 m, y= 5426809.9 m), and extending in a westerly direction following the southern kerb line for 5 metres. (1 parallel mobility parking space)

Add to Schedule B (Restricted Parking) of the Traffic Resolution Schedule

Column One	Column Two	Column Three
Wigan Street	Mobility parking - displaying an operation mobility permit only, P120 Maximum, Monday to Thursday 8:00am - 6:00pm, Friday 8:00am - 8:00pm, Saturday and Sunday 8:00am - 6:00pm.	South side, commencing 102.5 metres from the intersection between Wigan Street and Taranaki Street (Grid Coordinates x= 1748734.50, y=5426810.69) and extending for 6.5 metres along the southern kerb line in a westerly direction.

Prepared By: Orencio Gueco (Transport Engineer)
Approved By: Charles Kingsford (Principal Transport Engineer)
Date: 27/03/2020

FEEDBACK RECEIVED

Absolutely Positively
Wellington City Council
Me Heke Ki Pōneke

Feedback Received:

Name: Jill Hitchcock
Suburb: Owhiro Bay
Agree: No

This would discriminate against disabled users of the Lighthouse Cinema. A favourite outing there is to the Met Opera series which are 3-4 hours duration, not counting refreshment before or after. It would be fairer to pay for parking so long as one could pay for the full length of the performance. Would the plan be that ones car could be towed for exceeding 120 mins? In that event a disabled person would be stranded in a difficult position.

I suggest an alternative to enlist the cinema management in recording legitimate use of the parks in Wigan St.; they are always willing to go the extra mile for disabled cinema goers.

Officer's response:

The intention of this proposal is to assist mobility park users when attending the cinema and surrounding area. The current location of the park is very short in length and does not have good access to the footpath.

The proposed location of the mobility park will replace the coupon parking space, currently positioned directly outside of the cinema, and will be closer, safer and more accessible to mobility users. The coupon parking space will be relocated two car lengths away and is still available for parking.

All mobility permit holders are entitled to an extra hour of parking above the P120 time restriction. This means that they can stay for a maximum of 3 hours.

We are proposing a change in your area

Absolutely Positively
Wellington City Council
Me Heke Ki Pōneke

Kia ora,

You are receiving this leaflet as **we would like to inform you of a proposed change** we are making in or around your neighbourhood/place of business.

Proposal:

What we'd like to do	<ul style="list-style-type: none"> Install Diplomatic Parking, Monday to Friday 8:00am to 6:00pm.
Why we are proposing the change	<ul style="list-style-type: none"> Council received a request for diplomatic parking for the Timor-Leste Embassy from the Ministry of Foreign Affairs and Trade Protocol Officer. To ease the operational difficulties experienced by the embassy due to lack of available parking.
Location – where we propose to make the change	<ul style="list-style-type: none"> Thorndon Quay, Pipitea – near 231.
Impact	<ul style="list-style-type: none"> Accessible parking for diplomatic and foreign corps. 1 Loss of Metered parking space – converted to 1 Diplomatic parking space.
Additional Information	<ul style="list-style-type: none"> To view the legal description for this Traffic Resolution, an electronic copy of the report will be available on the Councils website from 9.00am Friday 28 February 2020 at http://wellington.govt.nz/have-your-say/public-input/consultations/open-consultations, or you can call (04) 499 4444 and we will send one out to you.
Reference	<ul style="list-style-type: none"> TR72-20 - Diplomatic Parking
Feedback	<p>If you would like to provide us with specific feedback, you can do so by filling out an online submission form, downloading a printable submission form at http://wellington.govt.nz/have-your-say/public-input/consultations/open-consultations, or by emailing us on trfeedback@wcc.govt.nz. Please note if you are giving feedback the consultation period opens 9.00am 28 February 2020 and finishes 5.00pm Friday 13 March 2020.</p>
Next Steps	<ol style="list-style-type: none"> Feedback collated by Monday 16 March 2020. The proposal will go to Regulatory Processes Committee on Wednesday 15 April 2020 (Due to Covid-19 and the restrictions in place this report has been rescheduled). If approved, the proposal will be installed within the next 3 months.

We are proposing a change in your area

Absolutely Positively
Wellington City Council
Me Heke Ki Pōneke

Traffic Resolution Plan: TR72-20 Thorndon Quay, Pipitea – Restricted Parking



We are proposing a change in your area

Absolutely Positively
Wellington City Council
Me Heke Ki Pōneke

Legal Description:

Delete from Schedule F (Metered Parking) of the Traffic Resolution Schedule

Column One	Column Two	Column Three
Thorndon Quay	Metered parking, P120 Maximum, Monday to Sunday 8:00am - 6:00pm.	West side, following the kerbline 440.5 metres north of its intersection with Davis Street (Grid coordinates x= 1749377.0 m, y= 5429242.3 m), and extending in a northerly direction for 19 metres. (6 angled parking spaces)

Add to Schedule F (Metered Parking) of the Traffic Resolution Schedule

Column One	Column Two	Column Three
Thorndon Quay	Metered parking, P120 Maximum, Monday to Sunday 8:00am - 6:00pm.	West side, following the kerbline 440.5 metres north of its intersection with Davis Street (Grid coordinates x= 1749377.0 m, y= 5429242.3 m), and extending in a northerly direction for 16 metres. (5 angled parking spaces)

Add to Schedule B (Restricted Parking) of the Traffic Resolution Schedule

Column One	Column Two	Column Three
Thorndon Quay	DC, CC, FC registered vehicles parking, Monday to Friday, 8:00am-6:00pm	West side, following the kerbline 456.5 metres north of its intersection with Davis Street (Grid coordinates x= 1749377.0 m, y= 5429242.3 m), and extending in a northerly direction for 3 metres. (one angle park)

Prepared By: Orencio Gueco (Transport Engineer)
Approved By: Charles Kingsford (Principal Transport Engineer)
Date: 27/03/2020

No feedback received.

We are proposing a change in your area

 Absolutely Positively
Wellington City Council
 Me Heke Ki Pōneke

Kia ora,

You are receiving this leaflet as **we would like to inform you of a proposed change** we are making in or around your neighbourhood/place of business.

Proposal:

What we'd like to do	<ul style="list-style-type: none"> Install P240 metered parking.
Why we are proposing the change	<ul style="list-style-type: none"> At the Freyberg Pool carpark there are 8 parking spaces which were previously leased by the Tug Boat restaurant. This lease has now expired and we are proposing to convert these parking spaces in line with the other metered parking spaces in the carpark. The Wellington City Council PSR Department has requested that these parks become metered P240 parks.
Location – where we propose to make the change	<ul style="list-style-type: none"> Freyberg Pool Carpark.
Impact	<ul style="list-style-type: none"> Change in restriction to 7 metered parking Spaces. 1 new metered parking space created.
Additional Information	<ul style="list-style-type: none"> To view the legal description for this Traffic Resolution, an electronic copy of the report will be available on the Councils website from 9.00am Friday 28 February 2020 at http://wellington.govt.nz/have-your-say/public-input/consultations/open-consultations, or you can call (04) 499 4444 and we will send one out to you.
Reference	<ul style="list-style-type: none"> TR 76-20 - P240 Metered Parking.
Feedback	<p>If you would like to provide us with specific feedback, you can do so by filling out an online submission form, downloading a printable submission form at http://wellington.govt.nz/have-your-say/public-input/consultations/open-consultations, or by emailing us on trfeedback@wcc.govt.nz.</p> <p>Please note if you are giving feedback the consultation period opens 9.00am Friday 28 February 2020 and finishes 5.00pm Friday 13 March 2020.</p>
Next Steps	<ol style="list-style-type: none"> Feedback collated by Monday 16 March 2020. The proposal will go to Regulatory Processes Committee on Wednesday 15 April 2020 (Due to Covid-19 and the restrictions in place this report has been rescheduled). If approved, the proposal will be installed within the next 3 months.

We are proposing a change in your area

 Absolutely Positively
Wellington City Council
 Me Heke Ki Pōneke

Legal Description:

Delete from Schedule F (Metered Parking) of the Traffic Resolution Schedule

Column One	Column Two	Column Three
Oriental Parade (Freyberg Pool & Fitness Centre Carpark)	Metered Parking, P240 Maximum, Monday to Thursday 8:00am – 6:00pm, Friday 8:00am – 8:00pm, Saturday and Sunday 8:00am – 6:00pm	Commencing 5 metres west of the north-eastern corner of the parking area (Grid Coordinates x= 1,749,863.7 m, y= 5,427,479.3 m), and extending in a westerly direction following the formed sealed section for 5 metres. (2 angled parking spaces)

Add to Schedule F (Metered Parking) of the Traffic Resolution Schedule

Column One	Column Two	Column Three
Oriental Parade (Freyberg Pool & Fitness Centre Carpark)	Metered Parking, P240 Maximum, Monday to Thursday 8:00am – 6:00pm, Friday 8:00am – 8:00pm, Saturday and Sunday 8:00am – 6:00pm	North side commencing 5 metres west of the north-eastern corner of the parking area (Grid coordinates X= 1,749,863.7 m, Y= 5,427,479.3 m), and extending in a westerly direction following the kerbline for 17 metres. (7 angled parking spaces)
Oriental Parade (Freyberg Pool & Fitness Centre Carpark)	Metered Parking, P240 Maximum, Monday to Thursday 8:00am – 6:00pm, Friday 8:00am – 8:00pm, Saturday and Sunday 8:00am – 6:00pm	West side, commencing 71 metres north of its south western corner (Grid Coordinates X=1,749,872.6m, Y=5,427,395.2m) and extending in a northerly direction following the western kerbline for 6.7 metres. (3 angled spaces)

Prepared By: Alastair Helm (Transport Engineering Assistant)

Approved By: Charles Kingsford (Principal Transport Engineer)

Date: 27/03/2020

No feedback received.