

ORDINARY MEETING

OF

REGULATORY PROCESSES COMMITTEE

AGENDA

Time: 9:30am
Date: Wednesday, 14 August 2019
Venue: Ngake (16.09)
Level 16, Tahiwī
113 The Terrace
Wellington

MEMBERSHIP

Mayor Lester
Councillor Calvert
Councillor Calvi-Freeman
Councillor Lee
Councillor Sparrow (Chair)

Have your say!

You can make a short presentation to the Councillors at this meeting. Please let us know by noon the working day before the meeting. You can do this either by phoning 04-803-8334, emailing public.participation@wcc.govt.nz or writing to Democracy Services, Wellington City Council, PO Box 2199, Wellington, giving your name, phone number, and the issue you would like to talk about.

AREA OF FOCUS

The Regulatory Processes Committee has responsibility for overseeing the Council's regulatory functions.

The committee will have responsibility for:

- Resource Management Act (RMA) Commissioners – Approve List and Appointment Guidelines
- Dog Objections and Fencing of Swimming Pools
- Road Stopping
- Temporary Road Closures
- Liquor Ban Bylaw Appeals
- Development Contributions Remissions.
- Approving leases under the “Leases Policy for Community and Recreation Groups”
- Suburb boundary amendments

Quorum: 3 members

TABLE OF CONTENTS
14 AUGUST 2019

Business	Page No.
1. Meeting Conduct	5
1.1 Apologies	5
1.2 Conflict of Interest Declarations	5
1.3 Confirmation of Minutes	5
1.4 Items not on the Agenda	5
1.5 Public Participation	5
2. General Business	7
2.1 Building Extension and new lease for the Tawa Squash Club	7
2.2 Reporting back on the outcome of public consultation re the proposed lease for Central Allbreeds Dog Training School at Ian Galloway Park	23
2.3 Approval of Names for Two New Access Strips in Island Bay	37
2.4 Approval of Name for a new right-of-way in Johnsonville	41
2.5 Proposed Road Closures	45

1. Meeting Conduct

1.1 Apologies

The Chairperson invites notice from members of apologies, including apologies for lateness and early departure from the meeting, where leave of absence has not previously been granted.

1.2 Conflict of Interest Declarations

Members are reminded of the need to be vigilant to stand aside from decision making when a conflict arises between their role as a member and any private or other external interest they might have.

1.3 Confirmation of Minutes

The minutes of the meeting held on 19 June 2019 will be put to the Regulatory Processes Committee for confirmation.

1.4 Items not on the Agenda

The Chairperson will give notice of items not on the agenda as follows.

Matters Requiring Urgent Attention as Determined by Resolution of the Regulatory Processes Committee.

The Chairperson shall state to the meeting:

1. The reason why the item is not on the agenda; and
2. The reason why discussion of the item cannot be delayed until a subsequent meeting.

The item may be allowed onto the agenda by resolution of the Regulatory Processes Committee.

Minor Matters relating to the General Business of the Regulatory Processes Committee.

The Chairperson shall state to the meeting that the item will be discussed, but no resolution, decision, or recommendation may be made in respect of the item except to refer it to a subsequent meeting of the Regulatory Processes Committee for further discussion.

1.5 Public Participation

A maximum of 60 minutes is set aside for public participation at the commencement of any meeting of the Council or committee that is open to the public. Under Standing Order 3.23.3 a written, oral or electronic application to address the meeting setting forth the subject, is required to be lodged with the Chief Executive by 12.00 noon of the working day prior to the meeting concerned, and subsequently approved by the Chairperson.

Requests for public participation can be sent by email to public.participation@wcc.govt.nz, by post to Democracy Services, Wellington City Council, PO Box 2199, Wellington, or by phone at 04 803 8334, giving the requester's name, phone number and the issue to be raised.

2. General Business

BUILDING EXTENSION AND NEW LEASE FOR THE TAWA SQUASH CLUB

Purpose

1. This report asks the Regulatory Processes Committee to approve the Tawa Squash Club's application to construct an additional squash court and extend its building footprint. This report also seeks approval for a fresh ground lease for the Club on Redwood Reserve.

Summary

2. The *Leases Policy for Community and Recreation Groups* (available at <https://wellington.govt.nz/your-council/plans-policies-and-bylaws/policies/leases-policy-for-community-and-recreational-groups>) sets out the Council's role in Leases on reserves, and pertinently in approving alterations that result in an extension of leased area.
3. The courts are located on Redwood Reserve on Main Road Tawa, which is classified as Recreation Reserve. Section 54 of the Reserves Act 1977 (available at http://legislation.govt.nz/act/public/1977/0066/latest/DLM444305.html?search=qs_act%40bill%40regulation%40deemedreg_The+Reserves+Act+1977_resel_25_h&p=2&sr=1) permits the Council to grant leases in respect of Recreation Reserves.
4. The Tawa Squash Club (the "Club") has applied to extend its building to construct an additional fourth squash court. The fourth court would enable the Club to respond to its increasing demand at peak times and to grow its membership.
5. The Club's current leased area is 575m². The proposed additional area will encompass the 121m² extension and egress walkway of 14m², increasing the leased area to 710m².
6. The approximate cost of the extension is \$320,000 including GST which the Club will fully fund from its reserves and grant funding. The Club requires landowner approval to carry out the extension to obtain funding and necessary consents.
7. Officers have assessed the environmental impact of the proposal as well as the sustainability of the Club and sport. On balance, given the environmental impact of the extension can be mitigated and the significant growth opportunities the extra court affords the Club, Officers recommend that the Committee approve the extension.
8. Additionally, as the Club's lease is due to expire 29 June 2022, this paper recommends that under the Reserves Act 1977, the Committee approve a fresh ten year lease with one ten year right of renewal to commence on completion of the extension.

Recommendation/s

That the Regulatory Processes Committee:

1. Receives the information.
2. Agrees that the Tawa Squash Club can extend the southern side of the Club's existing building at 67 Main Road Tawa by 135m² to construct a fourth squash court, increasing the total leased area to 710m².
 - a. Notes that this approval will expire in five years. For the avoidance of doubt, if the extension is not completed within five years the Club will be required to re-apply to the Council for approval.
3. Agrees to grant a new ground lease for a ten year period with one ten year right of renewal to the Tawa Squash Club, to commence on completion of the extension, for the land at Redwood Reserve legally described as Lot 1 Deposited Plan 28061 and held within the Record of Title WNF2/140.
 - a. Notes that the fresh Lease will be executed following completion of the extension.
 - b. Notes the Lease will contain the following Special Provisions:
 - i. The retaining wall is owned and to be maintained by Lessee.
 - ii. The Lessee is responsible for maintaining public safety around the retaining wall and egress.
 - iii. The Lessee will submit its ten-year maintenance plan prior to the new lease being executed.
4. Notes that the approval to grant the building extension and new lease on Reserve land is conditional on:
 - a. the Lessee obtaining necessary consents to carry out the works
 - b. appropriate iwi consultation
 - c. public notification as required under sections 119 and 120 of the Reserves Act
 - d. no sustained objections resulting from the above notification
 - e. legal and advertising costs being met by the Lessee (where applicable).

Background

9. The Tawa Squash Club has a current ground lease with the Council which expires 29 June 2022. The lease commenced 2002 for a term of ten years with a renewal period of ten years.
10. The current leased area is 575m² and the land containing the Club's building is situated at 67 Main Road Tawa, legally described as Lot 1 Deposited Plan 28061 and held within the Record of Title WNF2/140 (refer **Attachment One**).
11. In September 2018 the Club discussed its proposition with Council Officers to extend the existing facilities to construct an additional fourth squash court.
12. The Club submitted its proposal to construct an additional squash court and the requested further information on 29 April and 1 July 2019, respectively.
13. By increasing the number of courts to four, the Club will be able to meet growing demand at peak times and increase its membership.
14. The Club is award-winning and is the largest squash club in the Wellington region. It offers a variety of memberships and runs several programmes and tournaments aimed to reach its diverse communities.
15. The cost for the proposed works is estimated at \$320,000 (incl GST) which will be fully funded by the Club's reserves and grants. The Club requires approval from the Council for the extension before applying for grant funds.

16. If the Club's application is approved by the Committee, the works are scheduled to commence once building consent has been received and be completed within three months.
17. The proposed extension will increase the Club's building footprint by 135m² to 710m². The extension will be at the southern end of the Club and measures 6.6m wide by 16.8m deep. An egress door and walkway measuring 14m² will also be created. The initial building plans include a glass backed wall and increased spectator capacity (refer to **Attachment Two**).
18. As outlined in this report the environmental impacts have been assessed by Council Officers and are acceptable and able to be mitigated with native planting. **Attachment Three** provides photos of the area to be excavated, the current Clubrooms and a conceptual photo of the extension.
19. The extension will require both resource and building consents, which the Club will formally apply for once they have received Committee approval regarding the extension and lease. It is anticipated that the proposal will be consistent with the objectives and rules of the District Plan.
20. Officers' assessment of the Club's application has found that the recreational use of the Reserve is anticipated by Reserves Act 1977. The extension is an acceptable use of the Reserve given the opportunities for growth of the sport and ability to respond to the community's increasing demand.
21. This paper therefore recommends that the Committee approves the Club's extension of its leased area. Notes that the approval will be conditional on the Club completing the works with five years of this approval being granted.
22. If the above recommendation is approved, this report also recommends that the Committee approve, under the Reserves Act 1977, a new ground lease for the Club for a term of ten years with a renewal period of ten years, to commence once the extension is completed. This term is being recommended due to the Club's popularity and sustainable model, as well as its significant investment in the extension.

Discussion

23. The information submitted by the Club has been considered against the seven criteria in the Leases Policy in Officers' assessment of the proposed extension and early lease renewal:
 - a. Strategic fit;
 - b. Group's organisation structure;
 - c. Membership sustainability;
 - d. Financial and maintenance obligations;
 - e. Optimal use of resources;
 - f. Environmental impact; and
 - g. Demonstrated need from the community.

A. Strategic fit – *The group's purpose and activities must be consistent with the Council's strategic direction to promote healthy lifestyles and build strong communities.*

24. The Tawa Squash Club is an inclusive and family friendly club that welcomes members from all walks of life. It offers a range of programmes and memberships to cater for people's diverse needs.
25. Tawa Squash Club has an outstanding reputation in the community and further afield. It has been formally recognised at both a regional and national level as being a progressive club.
26. The Club is affiliated to Squash New Zealand and to Squash Wellington which means the Club can participate in competitive activities both regionally and nationally. Consequently Club members can have a national squash grading and high performance programmes can be accessed by up and coming talent.
27. The Club runs a successful weekly 'Mums and Babes' programme open to all members and non-members. The low-cost class enables parents, with or without their babies, to spend a morning at the club interacting and playing squash with others.
28. The Club also runs 'Squash in Schools' programmes with the local Redwood, St Francis Xavier and Tawa Schools, as well as Tawa Intermediate and Tawa College, providing little or no cost squash programmes.
29. As well as these programmes the Club runs popular business house competitions, senior and junior club nights, and monthly squash league tables.
30. The Club has the largest number of junior players in the Wellington region.
31. Tawa Squash Club hosts several squash tournaments each year, such as the Tawa Women's Open, Tawa Masters, Wellington Regional Superchamps and the Wellington Women's 800 series.

B. Group's organisation structure – *The group must be an incorporated society or Trust.*

32. Tawa Squash has been incorporated since 1965.
33. About 12 years ago, the Club created a position of full-time paid manager. This has resulted in notable improvements to operations and the Club's facilities and services to the members and wider community.
34. Affiliation with the sport's governing bodies enables the Club's committee to be provided with ongoing governance and management support.

C. Membership sustainability – *The group must be sustainable in terms of membership and/or users of the services for the term of the lease.*

35. The total membership has remained about 300 for the last few years, in 2018 this increased to 355. It is of note that this significant membership is despite the Club not carrying out any promotion or marketing.
36. The Club offers different categories of membership including casual play opportunities for the public.
37. The Club is the largest squash club by membership numbers of all 14 Wellington regional squash clubs.
38. Over the years, the Club has produced some nationally ranked players, referees and coaches. Presently the Club has the male nationally ranked number 3 and women's number 13 players in its membership.

39. The Club has two very experienced and regarded coaches who provide individual and group coaching.
40. The main impediment for the Club to increase its membership is the limited courts available. To date, the Club has been reticent to increase its membership due to the peak time court congestion resultant from the limited court numbers. The difficulty in accessing courts in peak time has led to complaints from members and some members leaving the Club. The Club believes that the court congestion at peak times is also deterring new members to join.
41. While the Club has made several changes to address the court congestion, such as new booking software with a waitlist feature and extending peak periods, the impact was relatively limited. Additionally while the changes may have somewhat helped the Club manage peak hour congestion, it does not solve the issues around shortfall in court capacity and enabling the Club to grow.
42. The fourth court will address the congestion and enable the Club to carry out targeted promotional activities to increase membership.
43. The Club aims to increase membership by an additional 100 members within two years after construction of the fourth court. It has provided detail of the various initiatives it will employ, but notes that increasing its members is not a pre-requisite for the construction of the fourth court and thereafter for its ongoing viability. This is because the demand for additional court capacity already exists.

D. Financial and maintenance obligations – *The group must be in a financial position to fulfil its lease obligations for the term of the lease, including but not exclusive to rent, insurance and building and grounds maintenance.*

Financial

44. As a non-profit entity, the annual income and expenditure budgets are compiled to reflect a break-even position each year. In year end 30 September 2018, the Club generated \$113,912 in gross income and the total operating expenses were \$106,529, making a profit of \$7,383.
45. With over \$90,000 in the bank, the Club has adequate cashflow to meet liabilities as they arise.
46. In 2010, the Club introduced a General Club Reserve made up of a general building levy added to the annual membership subscriptions which amounts to approximately \$7,500 pa. There is approximately \$15,000 in that Reserve presently.
47. The estimated cost of the project is \$320,000, including GST. The Club will be fully funding the project with its reserves and grants. The Club has submitted a detailed financial two-year cost projection of the project.
48. The Club has successfully funded and carried out several projects in recent years, such as re-roofing the building and renovating the showers in the changing rooms.
49. On completion of the project to extend the facility to four courts, the Club will aim to increase its membership by approximately 100 members over a two-year period, which will generate a net surplus.
50. The current lease fee for 575m² is \$764.86 (+GST), this will increase to \$980.86 (+GST) if the extension goes ahead.

51. The Club understands that the extension will result in other increased costs to the Club, such as insurance premiums and affiliation fees to Squash Wellington and Squash New Zealand.

Maintenance

52. The Club regularly carries out routine maintenance and the building is in good condition for its age. Recent works include a roof replacement, installing new showers, heat pumps and extractor fans, as well as improving the floor layout in the lounge area.
53. The Club building is rated at 90% of earthquake code standard.
54. The Club will submit its ten-year maintenance plan before a new lease is executed.

E. Optimal use of resources – *The land and/or buildings must be utilised to the fullest extent practicable.*

55. The Club presently has three squash courts that are at maximum capacity at peak times, which are 5pm-9pm Mondays to Thursdays. There are 18 peak time courts of 40 minutes duration available across the three courts on each of the those days
56. The Club facilities are available to use by members seven days a week, subject to the ongoing club nights, tournaments, interclubs etc. On occasion when the Club is free it can be hired at little to no cost by the local community, such as the Tawa Residents' Association.
57. The Club is located next to the St Francis Xavier School and the two groups share resources. For example, the Club provides access to the facilities when the School's meeting halls have been unavailable to them, such as following the major earthquakes. The School lets the Club access its carparks outside of school hours.
58. As above the construction of the fourth court will enable the Club to increase its membership and subsequent use of the facility.

F. Environmental impact – *The activity cannot have the potential to adversely affect open space values or other legitimate activities.*

59. The Club has been onsite for over 55 years, and playing squash will continue to be the predominant activity at the site.
60. The design plans of the proposed extension are included here as **Attachment Two**.
61. The proposed extension of the fourth squash court is to be built at the southern end of the club. The extension involves approximately 100m³ of excavation into the adjacent reserve area and would measure 6.6m wide and 16.8m in depth. Timber retaining walls will be built to support the excavated bank.
62. The ground floor walls will be concrete block and the upper level is timber framed with cladding to match the existing building. The extension will not significantly affect the street view given it is in scale and is designed to visually blend with the existing building (refer **Attachment Three**).
63. Redwood Park is Recreation Reserve and is subject to the Reserves Act 1977. The extension proposal is consistent with the purpose of the land's Recreation Reserve status. The soil removal and the retaining wall will impact on the reserve land. Planting a selection of shrubs on the Reserve adjacent to the leased area will improve the environmental and amenity values of this part of the Reserve. The plants will continue to be maintained until established by the Club under the Lease.

64. Although parking (and also traffic, particularly at school start and finish times) in Tawa is currently a concern, the peak times when squash is played complements the parking requirements of the local School and businesses. I.e. peak times for squash start at 5pm weekdays and weekends, which is after school and when businesses have closed. Parking is accommodated out the front of the Club and, as outlined above, at the adjacent school (outside of school hours), and at McKeefry Grove to the west of the Club.
65. The extension will not generate any additional noise effects.
66. The closest neighbouring property is the Redwood Village directly across the road. The proposed extension has been assessed by Officers and will not result in any shading, visual dominance or privacy concerns on these neighbours. Additionally full parking requirements for the occupants at the Village is provided onsite, therefore the Club's parking requirements should not affect these residents.

G. Demonstrated need from the community – *There must be demonstrated support and need within the community for the activity.*

67. Tawa Squash Club has more favourable trends in the popularity of squash when compared to the Wellington region and nationally. National squash membership numbers have remained relatively steady in the last six years with a decline of about 4% and about 9% decline in the Wellington region. This trend is in contrast to the Tawa Club which has seen an increase of 11% in the last year.
68. It is of note that the Devoy Centre in Tauranga, with six squash courts, closed its membership at 600 members, while the Tawa Squash Club has over 300 members with three squash courts.
69. The popularity of the Tawa Club appears to be due to the following:
 - winning 2018 New Zealand Squash Club of the Year award from Squash NZ
 - winning the 2018 Wellington Region Squash Club of the Year award from Squash Wellington
 - being awarded the Wellington Region Club of the Year from Sports Wellington in 2018
 - co-hosting the North Island junior age grade competitions
 - delivering successful programmes, such as *Schools* and *Mums and Bubs*
 - interest generated from the successful 2018 Commonwealth Games
 - its easily noticeable location on the main road of Tawa
 - significant growth of the membership catchment area.
70. The Club is located in the middle of Wellington's northern corridor which is one of the fastest growing areas in the region. The catchment extends from the suburbs of Newlands and Johnsonville to Whitby/Aotea and Titahi Bay, as well as Tawa and Churton Park.
71. The nearest squash clubs to Tawa Squash are in Mana and Khandallah.
72. Historically New Zealand has attained high world rankings for both male and female squash players. Currently New Zealand has a male and female squash player both ranked in the top 5 in the world.
73. The Tawa Squash Club has sponsorship from eight local businesses and it has endorsement from Squash Wellington to carry out this project.

Options

74. The Tawa Squash Club is a popular Club which is currently at capacity. To enable the Club to grow it needs to increase its court capacity to four courts. Committee approval is sought to both allow the Club to extend its building and for a new ground lease to be executed once the works are completed. If Officers' recommendations are rejected, and the lease is not secured, the Club will undoubtedly face significant difficulty in growing and catering for ongoing demand.

Next Actions

75. If the recommendations in this report are accepted the following will occur:
- Public notification / consultation of the proposed lease and extension, in line with the Reserves Act 1977.
 - Detail of any objections will be reported back to Committee.
 - The Club will pursue funding and the necessary consents.
 - The Club will report progress of the extension works to the Council at regular intervals.
 - Negotiate and sign the lease documentation.

Attachments

Attachment 1.	Tawa squash leased and extension area	Page 16
Attachment 2.	Tawa Squash building plans	Page 17
Attachment 3.	Photos of Tawa Squash building and excavation site	Page 19

Authors	Kristine Ford, Community Recreation Leases Lead Kate Brown, Reserves Planner
Authoriser	Bec Ramsay, Manager Open Space and Recreation Planning Sarah Murray, Customer and Community Partnerships Manager Paul Andrews, Manager Parks, Sport and Recreation Barbara McKerrow, Chief Operating Officer

SUPPORTING INFORMATION

Engagement and Consultation

Public consultation will be undertaken on both the proposed lease and the extension, as required under sections 119 and 120 of the *Reserves Act 1977* and section 6 of the *Leases Policy for Community and Recreation Groups*.

A Public Notice will be put in the *Dominion Post* and full details regarding the lease and extension will be included in the “Have your Say” section of the Council website. A 30-day consultation will be carried out with Te Runanga o Toa Rangatira Incorporated, Port Nicholson Block Settlement Trust, nearby neighbouring properties (by way of a letter drop), and the Tawa Residents’ Association.

All submissions received will be taken into account.

Treaty of Waitangi considerations

There are no Treaty of Waitangi considerations.

Financial implications

There are no significant financial considerations.

Policy and legislative implications

The recommendations in this report are consistent with relevant Council Policy – the *Leases Policy for Community and Recreation Groups* and legislation – the *Reserves Act 1977*.

Risks / legal

There are no significant risks regarding this project or lease.

Climate Change impact and considerations

There are no specific climate change impacts and considerations.

Communications Plan

Not applicable.

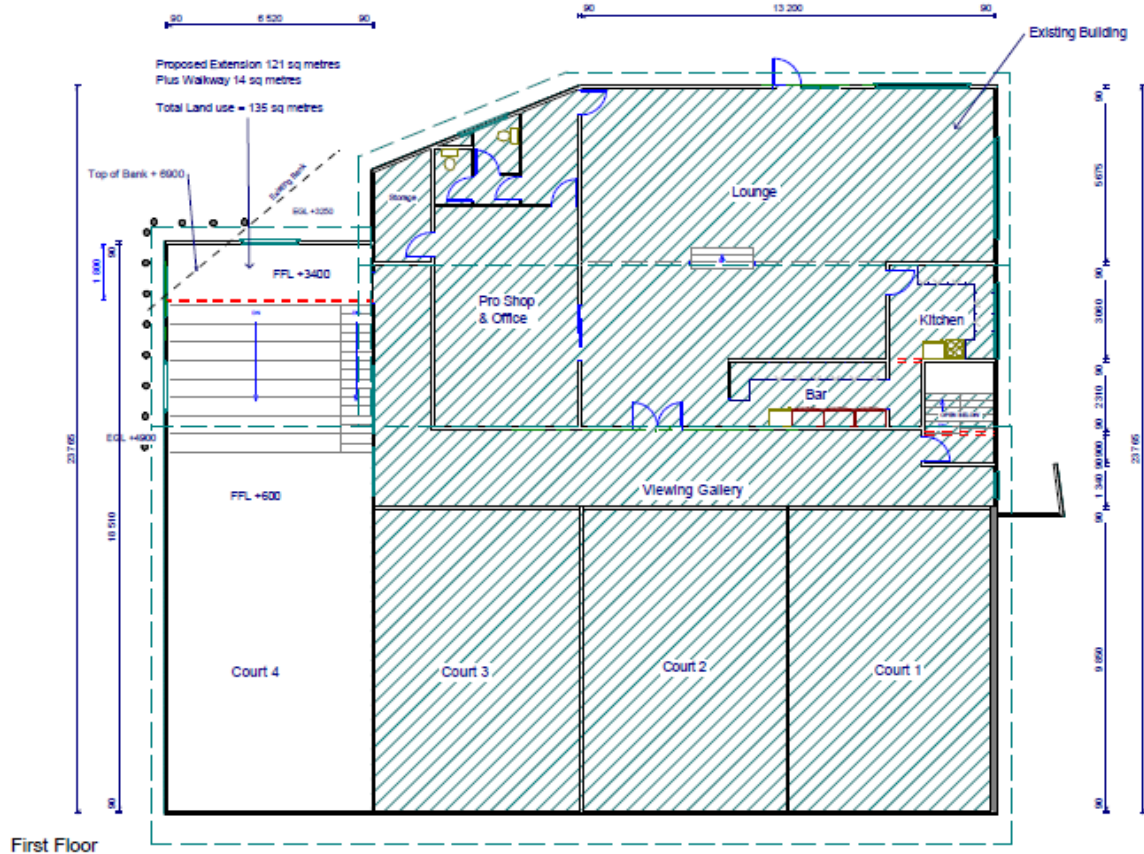
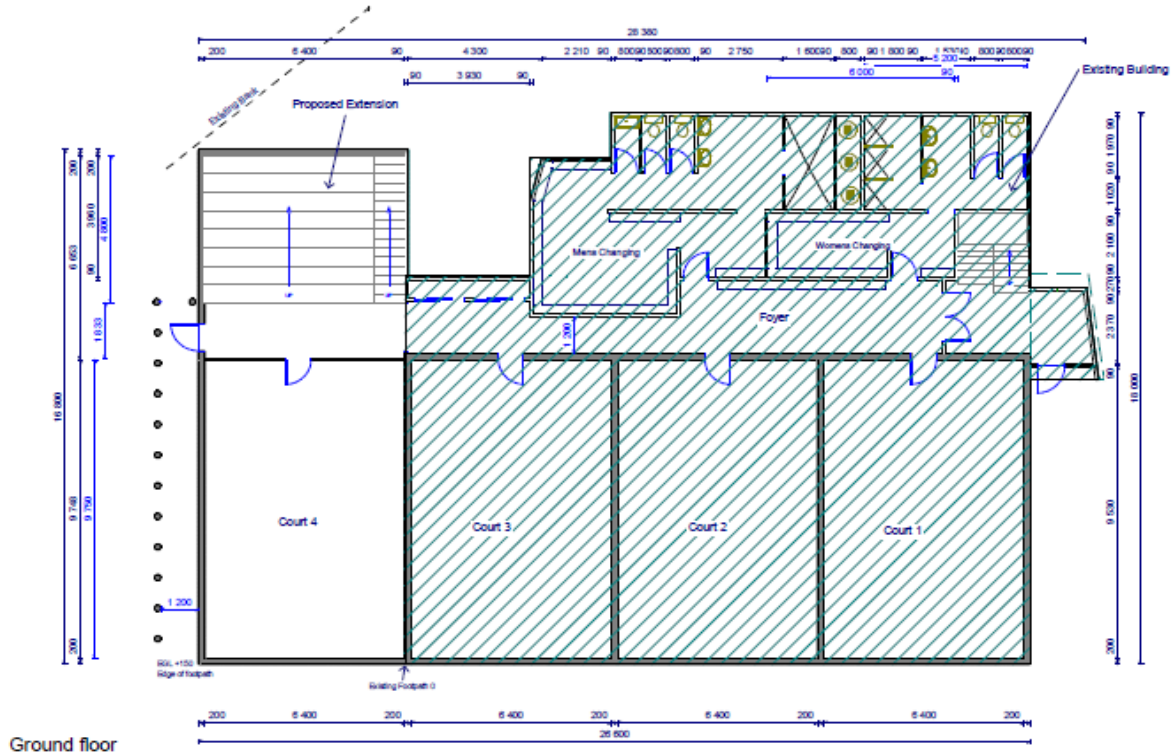
Health and Safety Impact considered

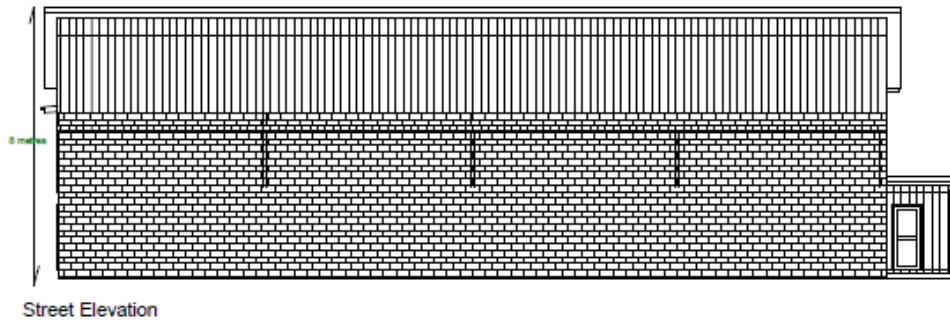
The Club will ensure the selected building contractors will be appropriately licenced and registered to carry out the works and will comply with all relevant health and safety regulations.

The Club will be responsible for maintaining public safety around the retaining wall and egress.

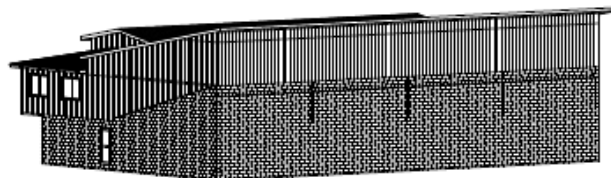
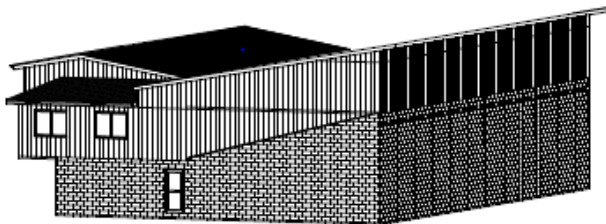
The Club has appropriate health and safety procedures and equipment at the facility.

Attachment Two – Initial Building Design Plans for Tawa Squash Club’s extension





Perspective views



ATTACHMENT THREE – Photos of the Tawa Squash Club



Photo 1: Front (east side) view of current Clubrooms



Photo 2: Front (east and southern side) view of current Clubrooms – extension will be on this southern wall – note yellow spray-painted marker.



Photo 3: Club's conceptual photo illustrating the extension



Photo 4: west side of clubrooms facing east illustrating the area to be excavated



Photo 5: southeast side of clubrooms facing west illustrating the area to be excavated

REPORTING BACK ON THE OUTCOME OF PUBLIC CONSULTATION RE THE PROPOSED LEASE FOR CENTRAL ALLBREEDS DOG TRAINING SCHOOL AT IAN GALLOWAY PARK

Purpose

1. This report details the outcome of public consultation regarding the proposed new lease for Central AllBreeds Dog Training School at Ian Galloway Park, and makes recommendations regarding a new lease.

Summary

2. Regulatory Processes Committee approval was given to grant a new lease for Central Allbreeds Dog Training School (CADTS) at Ian Galloway Park under the Reserves Act 1977, for a ten year term with one right of renewal for ten years, subject to public consultation (paper presented at the Regulatory Processes Committee on 27 March 2019).
3. A total of 11 submissions were received regarding the proposed lease. Three were opposed, one was in support, and six were neutral. A submission from Transpower New Zealand Ltd was also received ascertaining whether the proposed structures comply with the minimum safe separation distances required under the [New Zealand Electrical Code of Practice for Electrical Safe Distances](#) (NZECP34:2001).
4. Based on Officers' consideration of the public submissions, it is recommended that the Committee's previously approved lease term of ten years with one right of renewal of ten years is reduced to a term of five years with one five year right of renewal, with the addition of Special Provisions. The reduced term is recommended so that Officers can assess the Dog School's impact on the site at an earlier date and implement any mitigation. The Special Provisions are recommended to alleviate some of the Objectors' immediate concerns regarding increased numbers of dogs at the Park.

Recommendation/s

That the Regulatory Processes Committee:

1. Receives the information.
2. Agrees to grant a lease for a five year term plus one five year right of renewal to the Central Allbreeds Dog Training School for the land at Ian Galloway Park, legally described as Part Lot 1 on Deposited Plan 59984 and Part Lot 5 on Deposited Plan 64470 being part the land comprised of and described in Record of Title WN33C/807 and WN52A/734.

Notes that the following Special Provisions will be included in the lease:

- i. The Lessee will not operate between 9:30pm-7:30am.
- ii. The Lessee is to ensure noise levels at the land are kept to a reasonable level.
- iii. The Lessee will ensure that any planting at the site is to be locally sourced natives.
- iv. The Lessee will make the land available to other organisations by arrangement when not being used for dog training.

- v. The Lessee will ensure that lighting will be wildlife friendly, pointed away from Otari-Wilton Bush and otherwise meets the District Plan rules.
- vi. The Lessee will ensure that all members' dogs will be on leads or equivalent when outside the fenced club area.
- vii. Every effort will be made by the Lessee to avoid parking conflicts with other users of Ian Galloway Park.
- viii. The Lessee acknowledges that this Lease will be cancelled if CADTS ceases its dog school operations.

Background

5. The paper asking the Regulatory Processes Committee to approve a new lease for the Central Allbreeds Dog Training School, subject to public consultation, was presented and ratified on 27 March 2019 (see <https://wellington.govt.nz/your-council/meetings/committees/regulatory-processes/2019/03/27>).
6. As already covered in the 27 March paper, CADTS has leased land at Polhill Reserve for over 50 years for the purposes of a Dog Training School. The vehicle access to this site ceased in 2018.
7. Officers have been working with CADTS since February 2017 to relocate the Club to a suitable alternative site. A site was identified at Ian Galloway Park, which is legally described as Part Lot 1 on Deposited Plan 59984 and Part Lot 5 on Deposited Plan 64470 being part the land comprised of and described in Record of Title WN33C/807 and WN52A/734.
8. Public consultation was carried out as required under sections 119 and 120 of the Reserves Act 1977, and section 6 of the *Leases Policy for Community and Recreation Groups* (refer to **Attachment One** for the Communications Plan) between 27 April and 8 June 2019.
9. An advertisement was placed in the Public Notices of the Dominion Post on 27 April 2019.
10. Letters were sent to iwi groups: the Port Nicholson Block Settlement Trust and Te Runanga o Toa Rangatira Incorporated.
11. Letters were also sent to the following users of the park and interested parties; the Sanctuary to Sea-Kia Mauriora te Kaiwharawhara Trust, Kelly Sports, Gaelic Football, Cricket Wellington, Last Man Standing Club, Wellington Rugby Football Union, Hunters Rugby League, Western Rugby Football Club, and the Otari-Wilton Bush Trust.
12. Both the Wilton and Karori Residents' Association, as well as neighbouring properties at 47 Worcester Street and 43,45,47,49,51 and 53 Cheshire Street, were also sent letters about the proposed lease.
13. Details about the proposed lease were also placed on the "Have your Say" section of the Council website for the 27 April – 02 June period.
14. A total of 11 submissions were received. Three were opposed, one was in support, and six were neutral. Transpower New Zealand Ltd submitted an enquiry to ascertain whether the proposed structures will comply with the minimum safe separation distances required under the [New Zealand Electrical Code of Practice for Electrical Safe Distances](#) (NZECP34:2001).

15. Under the Reserves Act 1977, the Council is obliged to consider all submissions before proceeding with any proposed lease.
16. Based on Officers' consideration of the objections received regarding CADTS proposal, it is recommended that the previously approved lease term is reduced to five years with one right of renewal of five years, and that Special Provisions are added to mitigate the potential effects of increased dogs at the site.

Discussion

17. A total of 11 submissions were received regarding the proposed lease; three of these were objections. This section will detail the objections, as well as the submission received from Transpower.
18. Section 120 of the Reserves Act 1977 provides that any objector be given the opportunity of appearing before the Committee in support of their objection and that full consideration must be given by the Committee before deciding to proceed with the proposal.
19. All three Objectors requested to appear at Committee, however one Objector is unable to attend due to unforeseen circumstances. The Club has also requested to appear at Committee to respond directly to any queries.
20. The objections largely were concerned with the impacts of increased dogs at Ian Galloway Park. Two of the objections are strongly opposed to the lease going ahead, while the other objection from the Wilton Residents' Association has made recommendations to reduce the impact of the dog school which have been incorporated into the Special Provisions outlined below.
21. Ms Ranger and Mr Davies (representing the Wilton Residents' Association) will appear in support of their submissions. However Mr Roberts is unable to appear, but has requested that the details of his submission be presented to the Committee for consideration.
22. All Objectors questioned the need for another area to be set aside for dogs at Ian Galloway given there is already a dog exercise area at the southern end of the Park.
23. Ms Ranger suggested that CADTS instead use the old dog park site at Whitehead Road or around the Curtis Street public dog exercise area, so that dogs can be contained in one area and not be encouraged near Otari-Wilton Bush.
24. Officers have explained to Ms Ranger that the old site at Whitehead Rd is no longer a recognised dog area since the 2016 review of the Council's Dog Policy. The space is proposed to be used as an extension of the bike park area (subject to public consultation).
25. As well, Officers have discussed with Ms Ranger that the public dog exercise area at Curtis Street is for the public to use at any time, and it is important that the Council continues to make it available for all public to use at any time to respond to the growing demand for dog exercise areas. The area that CADTS is proposing to use will be fenced off to the general public and will be used quite differently to the public dog exercise area. CADTS will be responsible for the ongoing maintenance of the leased area.
26. Mr Roberts makes the point that the Council has a sign at the Park which bans all dogs from the Park (refer to **Attachment Two**) and is concerned that the Council is "even contemplating increasing the number of dogs in the area" given the impact, such as the

amount of dog faeces which creates a health hazard for people who play sport there. Mr Roberts notes that when using the park he often sees unleashed dogs on the sportsfields and in the neighbouring Otari-Wilton Bush.

27. All three Objectors are concerned with the impact on the Otari-Wilton Bush and state that it is essential that the recent flourishing of native bird populations such as kaka and kakariki are not threatened in any way by an increase in the area's dog population.
28. CADTS teaches dog owners to be responsible. The Council supports the School as it aligns with the Wellington Dog Policy <https://wellington.govt.nz/~media/your-council/plans-policies-and-bylaws/plans-and-policies/a-to-z/dogs/files/dogpolicy.pdf?la=en> in that it is training dogs and their owners to minimise the risk of distress and nuisance caused by the dogs to wildlife and natural habitats. The Council encourages and supports affordable dog training so that more Wellington dog owners are responsible and their dogs are well behaved and obedient.
29. Both Ms Ranger and the Wilton Residents' Association raised questions around the potential conflict between children using the area at the same time as dogs coming and going from the School. CADTS will start classes from about 6:30pm, so Officers do not see there being any conflict with other users of the park. Again, CADTS aims to train dogs and their owners to be responsible on and off lead, and around children. It is also important to note that there may not be an increase of the dog population at the Park as a result of the School being there as most dogs will be driven to the park to classes and then driven straight back home again.
30. Transpower New Zealand Ltd's interest in CADTS lease application relates to the modifications proposed to be erected under the CPK-WIL-A line, such as the portacom building, earthworks, lighting, fencing and planting new vegetation.
31. Officers, Club representatives and the Transpower Planner met in June to discuss the details on the types of structures proposed for the Club. Transpower then assessed the heights against the existing overhead clearance to its Central Park – Wilton A 110 kV transmission line and stated that it is comfortable that the proposed structures will comply with the minimum safe separation distances required under the [New Zealand Electrical Code of Practice for Electrical Safe Distances](#) (NZECP34:2001).
32. Based on the consideration of the objections/submissions received and the Club's response, Officers recommend the Committee approve proceeding with a lease for CADTS at Ian Galloway Park. It is recommended that the lease be shortened to a five year lease with one right of renewal for five years to enable the effects of the Dog School on Ian Galloway Park and Otari-Wilton Bush to be assessed and mitigated. Officers recommend including the following Special Provisions:
 - a. The Lessee will not operate between 9:30pm-7:30am.
 - b. The Lessee is to ensure noise levels at the land are kept to a reasonable level.
 - c. The Lessee will ensure that any planting at the site is to be locally sourced natives.
 - d. The Lessee will make the land available to other organisations by arrangement when not being used for dog training.
 - e. The Lessee will ensure that lighting will be wildlife friendly, pointed away from Otari-Wilton Bush and otherwise meets the District Plan rules.
 - f. The Lessee will ensure that all members' dogs will be on leads or equivalent when outside the fenced club area.
 - g. Every effort will be made by the Lessee to avoid parking conflicts with other users of Ian Galloway Park.

- h. The Lessee acknowledges that this Lease will be cancelled if CADTS ceases its dog school operations.

Options

33. If the Committee rejects Officers' recommendations to approve a lease for CADTS, the Dog School will struggle to remain operational as it would not have a viable site. CADTS can no longer operate from the Polhill site and Council Officers have exhausted all alternative options on Wellington's western and northern reserves.
34. After hearing directly from the three Submitters, the Committee may choose to amend the recommended Special Provisions.

Next Actions

35. If the recommendations in this report are accepted, the following will occur:
- Officers will report back to all submitters regarding the outcome; and
 - The lease documentation will be negotiated, drafted and signed.

Attachments

- Attachment 1. Communications Plan
Attachment 2. Ian Galloway Park sign

Page 29
Page 36

Author	Kristine Ford, Community Recreation Leases Lead
Authoriser	Myfanwy Emeny, Open Space and Parks Manager Paul Andrews, Manager Parks, Sport and Recreation Barbara McKerrow, Chief Operating Officer

SUPPORTING INFORMATION

Engagement and Consultation

As this was a new use of the Recreation Reserve at Ian Galloway Park, Officers developed a communications plan to ensure that the views of the public and persons likely to be affected by, or to have an interest in the lease were considered.

Information regarding the proposed lease was made publicly available and Officers invited submissions, as required under section 119 and 120 of the *Reserves Act 1977* and section 6 of the *Leases Policy for Community and Recreation Groups*.

Officers have also provided every submitter who asks to be heard a reasonable opportunity to appear in support of their submission in accordance with section 120 of the *Reserves Act 1977*.

This document reports back to the Committee the results of the public consultation.

Treaty of Waitangi considerations

There are no Treaty of Waitangi considerations.

Financial implications

As previously outlined, the Council has committed to removing the buildings and associated structures from the existing Polhill site. Council will also support the building of a fence at the new site up to a value of \$15K and cover consenting costs for the installation of the lights. All other costs will be met by CADTS.

Policy and legislative implications

The recommendations in this report are consistent with relevant Council Policy – the *Leases Policy for Community and Recreation Groups* and legislation – the *Reserves Act 1977*.

Risks / legal

The proposal will be subject to the *Reserves Act 1977*.

Climate Change impact and considerations

Not applicable.

Communications Plan

A communications plan was developed and can be referred to at **Attachment One**.

Health and Safety Impact considered

The Club has an up-to-date Health and Safety plan.

Communications and engagement plan

Project name	Central Allbreeds Dog Training School
Business unit	Parks, Sport and Recreation
Project owner	Kristine Ford
Plan author	Kristine Ford

1 PURPOSE

The purpose of this plan is to set out the approach to communicating and obtaining feedback from stakeholders and the general public regarding the proposed new leased area at Ian Galloway Park for the Central All Breeds Dog Training School (CADTS).

2 CONTEXT/BACKGROUND

- CADTS has leased land at Polhill Reserve for over 50 years for the purposes of a Dog Training School. The previous lease held by CADTS for that site was for a ten year term, and expired on 30 June 2017.
- The vehicle access to this site was over private land through an informal agreement with Victoria University of Wellington. This land was sold by the University to a private developer in 2017 and vehicle access ceased in 2018.
- Officers have been working with CADTS since February 2017 to relocate the Club to a suitable alternative site. A site was found at Ian Galloway Park, which is legally described as Part Lot 1 on Deposited Plan 59984 and Part Lot 5 on Deposited Plan 64470 being part the land comprised of and described in Record of Title WN33C/807 and WN52A/734.



- The licenced area will be approximately 1,437m² and the lease fee is \$1,209.76 +GST per annum.
- Much of the area proposed to be leased is currently under-utilised space. It is used sporadically by the neighbouring Western Suburbs Rugby Club for training, however no one has booked the space over the last few years.

• **Gates and Access:** Two vehicle gates are required to enable access for mowing, maintenance, deliveries, and event days. One gate would be positioned at the carpark end and another at the eastern end of the site.

Primary access for users will be via pedestrian gates adjacent to the Kaiwharawhara Track exit point. These are accessed via a short path from the parking area for Dog Club users commencing near the South East corner of the Rugby Club building.

• **Lighting:** initially two sets of three flood lights will be placed facing across the training space at approximately 10 metre intervals. These will provide sufficient light for conducting evening activities. They would be used primarily during the winter months between 6-9pm between 1-2 evenings a week.

The effects of the lighting will be mitigated by ensuring that the lights face inwards across the working space and will be directed down.

Additional lighting may be mounted on the Western Rugby Club building to provide light for walking up the access path and as added security around the parking area to the side of the building, to be negotiated with the Rugby Football Club.

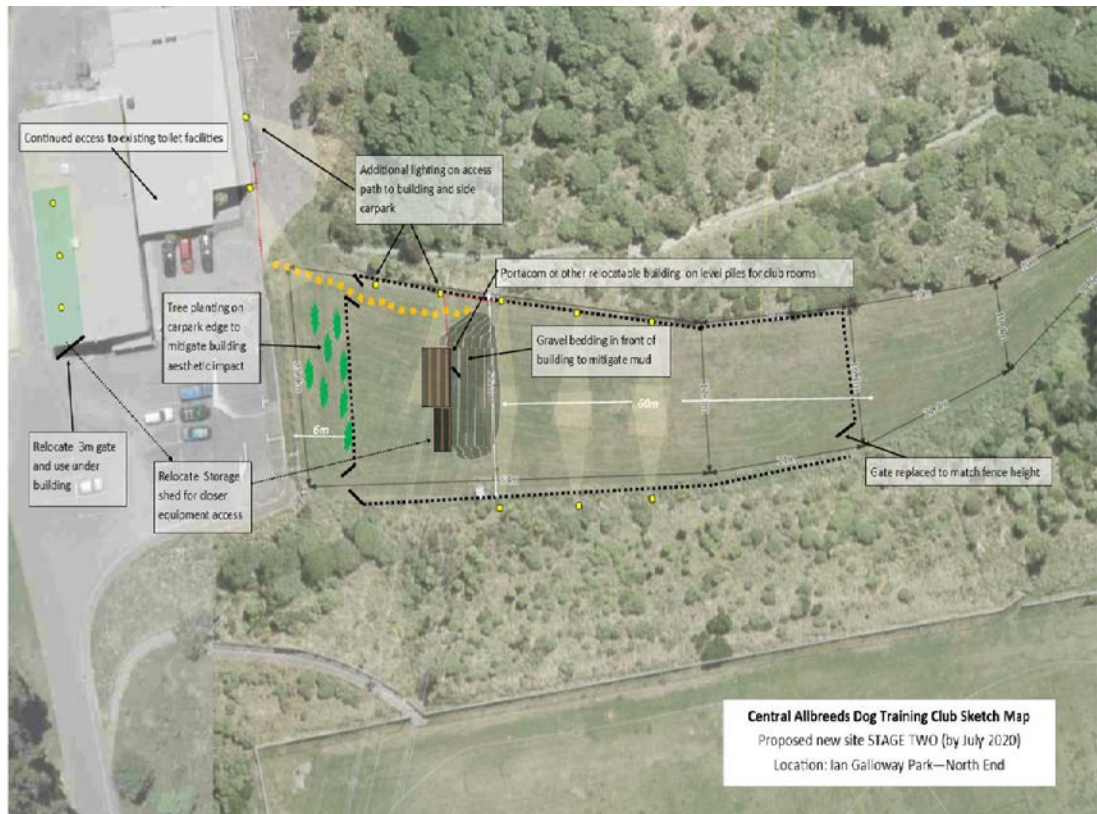
• **Power:** For electricity, a power junction has been identified as accessible adjacent to the Western Suburbs Rugby Football Clubrooms. This is located on the closest side of that building. A second meter will be installed when cabling is laid for the floodlights to separate power charges from those incurred by the Rugby Football Club.

• **Toilets:** Bathroom facilities are available in the existing building and these can be accessed if needed during classes, through direct negotiation with the Rugby Football Club and payment of appropriate compensation to them.

• **Storage:** A Garden Shed of approximately 3m x 1.8m is required for storage of equipment supplies for training activities. In Stage One this will be placed discretely under the cantilevered section of the Rugby Clubrooms.

• **Vegetation:** If required hedges/shrubs/trees will be planted to soften the impact of the fencing where there aren't existing plantings already. The Club is happy to be guided in appropriate planting, so that a consistent look for the overall site is achieved.

STAGE TWO – Completed by July 2020



● **Lighting:** In the second stage additional floodlights will be needed to continue the usable area to the rear of the site. An additional three pairs of flood lights will be positioned facing across the site with the same considerations for light pollution as before (as per picture above).

● **Structure:** A small relocatable building structure will be installed near the front of the site, with its back to the car park. This will become the clubrooms for shelter during training, as a focus for developing club culture, and for storage of equipment and Club documents.

It is expected that the size of the proposed structure, in addition to the proposed fences, would likely trigger the need for resource consent.

As part of the risk management practice, gravel or other drainage substrate extending out from the building will be laid to mitigate the hazard of muddy slippery surfaces (likely to be an issue around higher use areas directly in front of the building). A longer term goal is to replace the gravel with a decked area.

● **Water:** In terms of water supply, we are hoping to work with WCC to install a sub-meter and will trench plumbing so that we have access to water on the site.

● **Bathrooms:** It will not be necessary to install toilets or make a sewer connection as access will continue to be available within the Rugby Club rooms

3 COMMUNICATION OBJECTIVES

To ensure that all affected parties are aware of the proposal.

Under both the Reserves Act 1977 and the Leases Policy 2012, the Council is required to publicly notify the proposed lease. The requirements provided for in the Act specify that the notification shall be published once in a newspaper circulating in the area in which the reserve is situated.

Any person can object or make a submission within one month after the date of publication of the notice. As well, the objector or person/organisation making the submission can appear before the committee. The committee is required to give full consideration to every objection or submission received before deciding to proceed with the proposal.

Because this is a new development, Parks, Sport and Recreation will also seek feedback from nearby neighbours, users of the park and interested groups.

4 KEY MESSAGES

The proposed site is the Northern most section of Ian Galloway to the east of the Western Suburbs Rugby Club. CADTS has applied to use the site for a dog training club.

CADTS has operated at their current site at Polhill Gully for fifty years with no issues. They no longer have vehicle access to this site and the Council is supporting the Club to find a new location.

CADTS is a fun, family-oriented, friendly club for all dogs and their owners, promoting training with positive reinforcement techniques.

Untrained dogs cause multiple problems in Council public spaces. Having dog training schools within the city helps to alleviate these problems. A dog training school in the western suburbs will also have positive implications on ensuring the success of the current Capital Kiwi proposal.

CADTS assists with meeting the objectives under the Council's Dog Policy:

- to assist dog owners meet their obligations under the Dog Control Act 1996
- make sure dogs are well cared for and Wellingtonians are able to enjoy owning dogs
- prevent dogs causing any danger to the public, wildlife and natural habitats
- actively promote responsible ownership of dogs
- provide for the reasonable exercise and recreational needs of dogs and their owners.

CADTS will run weekly classes for the public and members one evening a week (2 hours) and one weekend morning a week (2 hours) throughout the year. They will also run a members only class on Tuesday evenings for 2.5 hours. During summer, there may be additional weekday evening or weekend specialist classes offered. The club will hold 4-8 competitive events a year (Championship Show, Ribbon Trials, Canine Good Citizen assessment, Nosework, Agility, Flygility).

These dog training classes are closely supervised therefore dogs are under control at all times and barking is actively discouraged. It is not a dog exercise area and not available to the general public for this purpose.

Infrastructure on the site will be minimal, but will contain 1.5m high fencing with wooden posts and lighting. The Club plan to plant natives to soften the impact of the fencing where there are no existing plantings. Larger trees can be planted to further screen any visual impacts from the site.

Future plans include a small relocatable building within the site.

The site is set down from the road, and therefore not visible from Wilton Road.

CADTS has been working with the neighbouring the Western Suburbs Rugby Club to obtain access to the club's facilities, such as the bathroom and kitchen facilities. As well as access to the unused area under shelter on the Western side of their clubrooms to be used as an alternative in wet weather. Based on its discussions with the Western Suburbs Rugby Club, CADTS is confident that its proposed activities will not conflict with any current users of the site.

5 STAKEHOLDERS

- Neighbours
- Local Ward Councillors
- Informal users of the park
- Western Suburbs Rugby Club
- Otari-Wilton's Bush Trust
- Wilton Residents Association
- Sports Clubs that regularly use Ian Galloway
- Iwi groups – as it is a new proposed development
- Council staff with an interest in the area

6 ACTION PLAN

Date	Activity	Purpose	Audience	Comment
27/04/19	Dompost Public Notice	Requirement under Act Reaches wide geographical interested parties	Readers of public notice section of Dompost	
26/04/19 -31/5/19	"Have your say" Council website notice	To provide thorough information re the proposal – which we can provide links to on all other comms	All interested parties	
26/04/19 -31/5/19	Erect sign at the park	Will capture the informal users of the area and direct them to "have your say" page if they're interested	Informal users of park	
26/04/19 -31/5/19	Letters to stakeholders	Inviting feedback from public and persons likely to be affected by or have an interest in the proposal	Neighbouring properties, users of the park (Sports Clubs), Residents Association, Otari-Wilton's Bush Trust	
26/04/19 -31/5/19	Letters to iwi		Iwi groups: Te Runanga o Toa Rangatira Inc. Port Nicholson Block Settlement Trust	
26/04/19 -31/5/19	Email to interested staff	Informing them of the proposal and current engagement	Otari-Wilton's Bush Manager and Sportsfield Manager	
26/04/19	Site visit	Providing further	Interested Local	

-31/5/19		information on proposal	Ward Councillors	
----------	--	-------------------------	------------------	--



APPROVAL OF NAMES FOR TWO NEW ACCESS STRIPS IN ISLAND BAY

Purpose

1. This report asks the Regulatory Processes Committee to approve names for two newly created access strips in Island Bay as shown on F Plan 3107 (Attachment 1 refers).

Summary

2. This is a proposal to name two private access strips created as a result of redevelopment of the Erskine College site in Island Bay. The proposed names are *Erica Pabst Way* and *Jean Caldwell Way*.

Recommendations

That the Regulatory Processes Committee:

1. Receives the information.
2. Agrees to approve the names *Erica Pabst Way* and *Jean Caldwell Way* to be allocated to two private access strips created as a result of redevelopment of the Erskine College site in Island Bay, as shown on F Plan 3107.

Background

3. The Erskine College site in Island Bay is being redeveloped. As a consequence, two new access strips, shown on F Plan 3107, need to be named in accordance with the Council's Road Naming Procedures (August 2002) and the Addressing Standard (AS/NZS 4819:2011).

Discussion

4. The redevelopment of the Erskine College site in Island Bay is nearing completion. Two private access strips created as part of the redevelopment now need to be named.
5. Naming these access strips will allow addresses to be assigned to properties for which the primary access is via these access strips. New owners will then be able to have services connected and mail delivered. Visitors and emergency services will be able to more easily locate properties at the site.
6. The developer's heritage architect has consulted with Heritage New Zealand and the Save Erskine College Trust (SECT) in selecting a number of proposed names for access strips being constructed at the site.
7. From this list, the developers' agent has submitted three names as possibilities for two of the access strips which need to be named since they are primary access points for properties. From those three, *Erica Pabst* and *Jean Caldwell* have been selected for Councillors to consider. The third name proposed, *Janet Erskine-Stewart*, is less unique; there is a 'Stewart Drive' in Newlands and a 'Stewart Duff Drive' in Rongotai,

for example. There is also an 'Erskine Close' in Island Bay very near to the Erskine College site.

8. Other relevant provisions of the Council's current Road Naming Procedures are that road names should preferably be unique, not excessive in length, unlikely to be mistaken for another road name already in use, unlikely to cause offence, and have some local content or meaning, reflecting an historical person or event. In this instance, there has not been any suggestion that a te reo name would be more appropriate. Moreover, despite Island Bay having a naming theme of European rivers, the proposed names of people associated with the site seem more appropriate in this instance. These meet the provisions of the Council's current and draft Road Naming Procedures and Policy, respectively.
9. The heritage architect has advised the following in respect of the two women after whom the access strips are proposed to be named:
 - Mother Erica Pabst (1905-1985): much-loved; was the school Principal from 1958 to 1963; she entered the Society of the Sacred Heart in 1939.
 - Reverend Mother Jean Caldwell: was on the school roll in 1926; was the Reverend Mother from 1981-1983.
10. Wellington City Libraries advise that Erica Pabst was educated in Auckland (school and university) before moving to Wellington. There is law scholarship named in her honour offered by Auckland University.
11. The Council's Tira Poutama, Iwi Partnerships Team has been consulted and raised no objection to the proposed names.
12. The Island Bay Residents' Association has been consulted and raised no objection to the proposed names.
13. Based on the information provided by the developers' heritage architect and the provisions of the Council's current Road Naming Procedures and draft Road Naming Policy, the names *Erica Pabst Way* and *Jean Caldwell Way* are the most appropriate names for the two access strips.

Recommended Names

14. Council officers recommend the names *Erica Pabst Way* and *Jean Caldwell Way* be approved for the access strips created as a result of redevelopment of the Erskine College site, as shown on F Plan 3107.

Attachments

Attachment 1. F Plan 3107 Erica Pabst and Jean Caldwell Ways

Page 40

Authors	Carline Thomas, Advisor, Land, Customer and Property Information Michael Brownie, Team Leader Land, Customer and Property Information
Authoriser	Toni Thompson, Manager Information Centre Moana Mackey, Acting Chief City Planner

SUPPORTING INFORMATION

Engagement and Consultation

Consultation on the proposed names has taken place with the developer's agents who are assisting with the process of naming access strips at the site. They have liaised with the Save Erskine College Trust and Heritage New Zealand.

The Island Bay Residents' Association has been consulted and has not raised any objection. The Council's Tira Poutama, Iwi Partnerships Team has also been consulted and raised no objection. Feedback has been received from the Wellington City Libraries' team.

The names have been checked for duplication, similarity and suitability by the Greater Wellington Regional Council.

Treaty of Waitangi Considerations

The Council's Tira Poutama, Iwi Partnerships Team has been consulted and made no objection to the names proposed.

Financial Implications

There are no financial implications.

Policy and Legislative Implications

Allocation of street names is a statutory function under Section 319A of the Local Government Act 1974. The proposed name meets the relevant requirements of the Council's current Road Naming Procedures (2002).

Risks / Legal

Nil.

Climate Change Impact and Considerations

Nil.

Communications Plan

There is a notification list which includes Land Information New Zealand, New Zealand Post, and emergency services, such as the Fire Service.

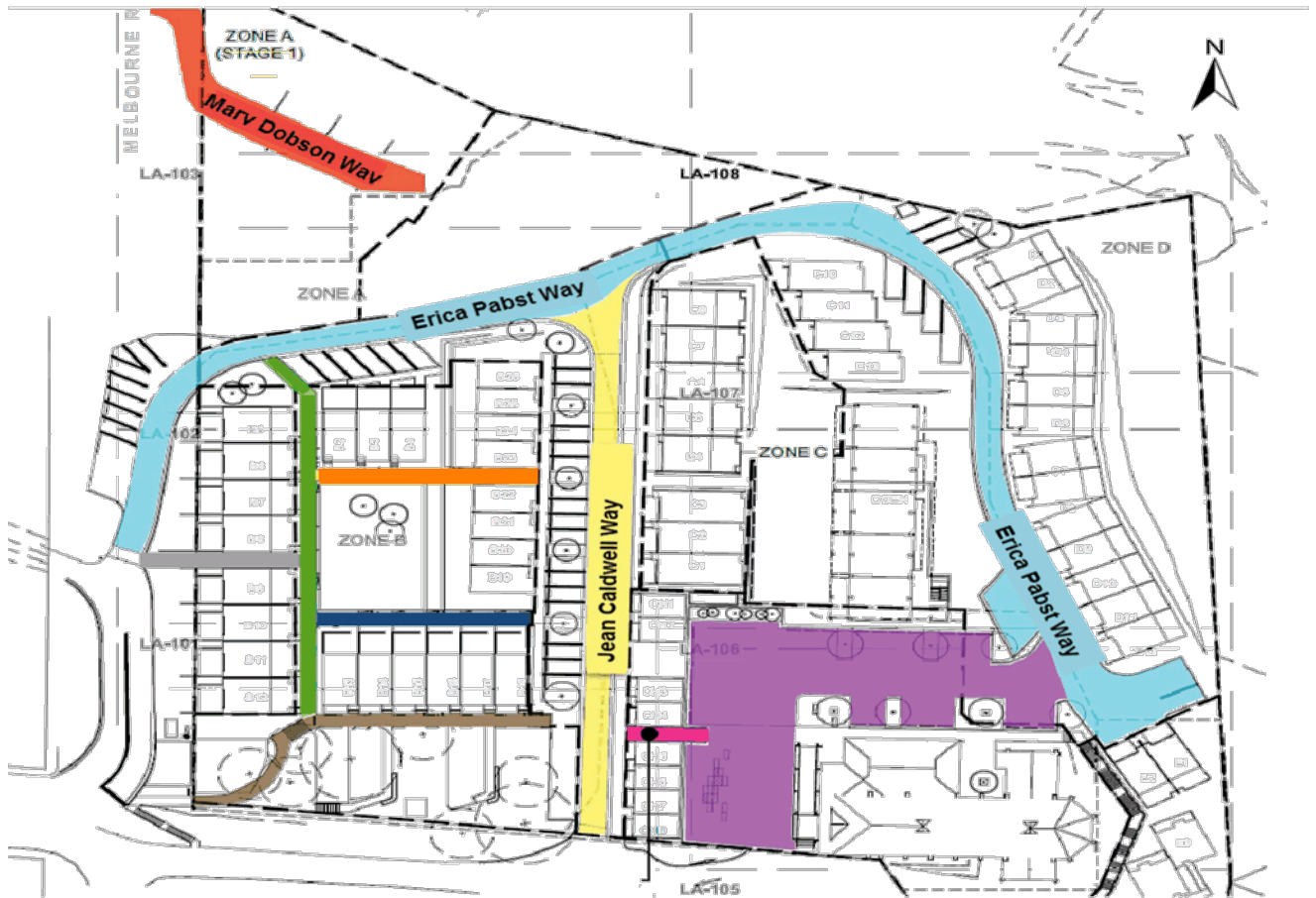
Health and Safety Impact Considered

Health and safety for residents and visitors will be facilitated by the naming of these access strips since emergency services will be able to more easily locate the site of any emergency at this location.

F Plan 3107: 14 August 2019

Erica Pabst Way

Jean Caldwell Way



Key:

Erica Pabst Way	
Jean Caldwell Way	

APPROVAL OF NAME FOR A NEW RIGHT-OF-WAY IN JOHNSONVILLE

Purpose

1. This report asks the Regulatory Processes Committee to approve a name for a new right-of-way in Johnsonville, as shown on F Plan 3105A (Attachment 1 refers).

Summary

2. A subdivision off Fairburn Grove in Johnsonville has resulted in a new right-of-way which now needs to be named.

Recommendations

That the Regulatory Processes Committee:

1. Receives the information.
2. Approves the name *Tauhō Way* to be allocated to the new right-of-way created as a result of a recent subdivision in Johnsonville and shown on F Plan 3105A.

Background

3. A subdivision accessed via Fairburn Grove in Johnsonville has resulted in a new private right-of-way, created to provide access to a number of properties.

Discussion

4. A private right-of-way off Fairburn Grove in Johnsonville has been created as result of subdivision. Under the Australasian Addressing Standard AS/NZS 4819.2011, right-of-ways serving five or more properties should be named. This right-of-way will give access to more than five properties.
5. The name *Christine Way* was suggested by the developer for the right-of-way, after his late wife. Christine Scott was most latterly a special needs teacher at Kimi Ora School in Lower Hutt.
6. The Johnsonville Community Association has approved the use of the name *Christine Way* and iwi have made no objection to this name. It was not felt to be suitable, however, as it does not fully satisfy the criteria of the Council's current and draft road naming guidelines.
7. The relevant criteria provide that where a name commemorates a person, that person should be of note in some way. This may include an association with an area or through special service. The Greater Wellington Regional Council has also advised that this name is similar to others in region, and therefore should preferably not be used.
8. The name *Silvereye Way* has been reserved for use in Wellington by the Greater Wellington Regional Council.

9. At the meeting of the Regulatory Processes Committee ('the Committee') on 18 April 2019, the name *Silvereye Way* was proposed for a small private right-of-way in Crofton Downs.
10. At that time, however, a decision on the name was deferred in view of further development in the area. A number of te reo names for native flora and fauna were eventually selected at a subsequent meeting of the Committee for the roads and right-of-ways created as part of this development. The right-of-way for which it was originally proposed in Crofton Downs has been named *Pihipihi Way*, one of a number of names for the 'silvereye' bird.
11. As the name *Silvereye Way* is still available for use, officers suggested the name *Silvereye Way* for this small private right-of-way off Fairburn Grove at the meeting of the Regulatory Processes Committee on 19 June. The developer is in favour of this name, and no alternative name has been suggested by local iwi.
12. Following an invitation to comment on the use of the name *Silvereye Way* for this private right-of-way prior to the meeting of the Regulatory Processes Committee meeting of 19 June, the Johnsonville Community Association responded with a new suggestion by email after the deadline by which the relevant report had to be submitted for authorisation and inclusion in the agenda for that meeting.
13. The Johnsonville Community Association has proposed an alternative name for the bird also known as the 'silvereye' or wax-eye'. This te reo Māori name - *Tauhou* - means 'new arrival' or 'stranger'. This is a reference to the bird being a more recent arrival in Aotearoa New Zealand during the 1800s, although the Department of Conservation advise that it is now considered native to Aotearoa New Zealand ([source: https://www.doc.govt.nz/nature/native-animals/birds/birds-a-z/silvereye-or-wax-eye/](https://www.doc.govt.nz/nature/native-animals/birds/birds-a-z/silvereye-or-wax-eye/)).
14. There is no precedent for naming streets following any particular theme in Johnsonville.
15. The Council's Tira Poutama, Iwi Partnerships Team has been approached for feedback. They have raised no objection to the use of any of the names above (*Christine*, *Silvereye* or *Tauhou*) for this small private right-of-way.

Recommended Names

16. Council officers recommend the name *Tauhou Way* for the private right-of-way off Fairburn Grove shown on F Plan 3105A.

Attachments

Attachment 1. F Plan 3105A

Page 44

Authors	Carline Thomas, Advisor, Land, Customer and Property Information Michael Brownie, Team Leader Land, Customer and Property Information
Authoriser	Michael Brownie, Team Leader Land, Customer and Property Information Moana Mackey, Acting Chief City Planner

SUPPORTING INFORMATION

Engagement and Consultation

Consultation on this proposal has taken place with the developers, local iwi via the Council's Tira Poutama, Iwi Partnerships Team, and the Johnsonville Community Association.

The names *Christine Way*, *Silvereye Way*, and *Tauhou Way* have all been checked for duplication, similarity and suitability by the Greater Wellington Regional Council.

Treaty of Waitangi considerations

Tira Poutama, Iwi Partnerships has been consulted and has made no objection to the use of any of the above names in this area.

Financial implications

There are no financial implications.

Policy and legislative implications

Allocation of street names is a statutory function under Section 319A of the Local Government Act 1974.

Under the Australasian Addressing Standard AS/NZS 4819.2011 right-of-ways serving five or more properties should be named. This right-of-way will give access to more than five properties.

Risks / legal

There are no risks or legal implications associated with the selection of the proposed name. The Australasian Addressing Standard AS/NZS 4819.2011 provides that right-of-ways serving five or more properties should be named.

Climate Change impact and considerations

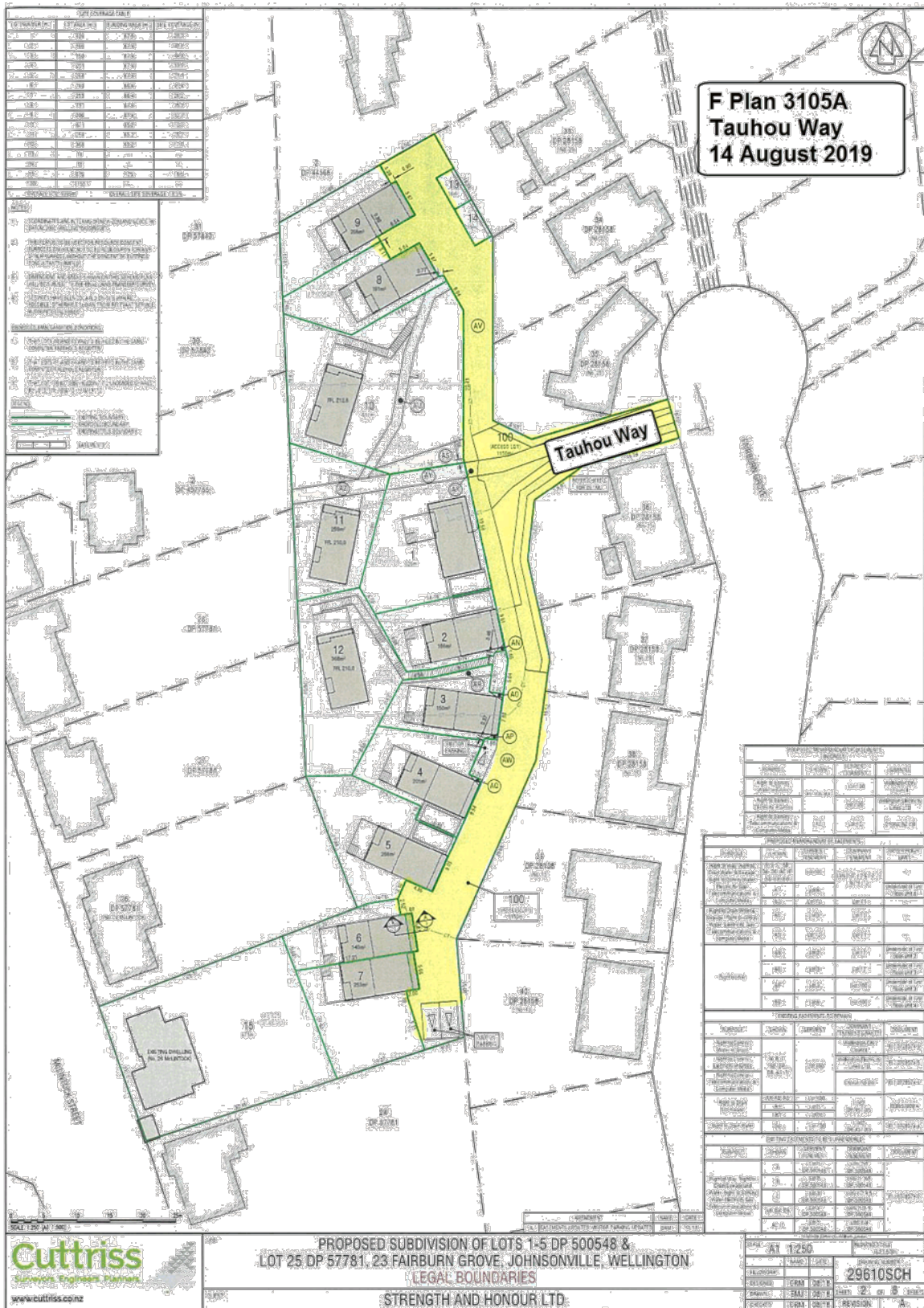
There are no climate change impacts or considerations.

Communications Plan

An extensive communication plan provides for all appropriate agencies and people to be advised of the name of the right-of-way, including emergency services, NZ Post, and Land Information New Zealand,

Health and Safety Impact considered

Naming this right-of-way means that emergency services such as fire and ambulance will be able to more readily attend any emergencies in this right-of-way.



PROPOSED ROAD CLOSURES

Purpose

1. This report asks the Regulatory Processes Committee to approve the temporary closures of roads to enable the following events to take place.

Summary

2. Applications have been made to temporarily close roads for the:
 - Wellington Night Market Saturday 5th October to Saturday 31st October 2020 2.00pm to 11.30pm;
 - Kilbirnie Santa Parade 1st December 2019 6.00am to 1.00pm;
 - Capital City Duathlon Sunday 22nd December 2019 6.00am to 12.00pm;
 - Johnsonville Christmas Parade Saturday 7th December 2019 6.00am to 12.00pm;
 - Chinese New Year Parade Sunday 2nd February 2020 9.00am to 2.00pm;
 - Wellington Round the Bays Sunday 16th February 2020 6.30am to 1.00pm.

Recommendation/s

That the Regulatory Processes Committee:

1. Receives the information.
2. Note that recommendations in this report should not be amended without first carrying out further consultation with affected parties and verification from the Council's Traffic Engineer that the amendment is not likely to cause unreasonable impact on traffic.
3. Agrees to close the following roads and sections of the roads for the events (as listed below) to vehicles and cycles only, subject to the conditions listed in the proposed Temporary Road Closures Impact Reports:

**Wellington Night Market Saturday 5th October 2019 to Saturday 31st October 2020
2.00pm to 11.30pm:**

- Manners Street (between Taranaki Street and Cuba Street);
- Cuba Street (between Manners Street and Wakefield Street).

Kilbirnie Santa Parade Sunday 1st December 2019 6.00am to 1.00pm:

- Bay Road (between Rongotai Road and Coutts Street);
- Rolling road closure (Mahora Street, Rongotai Road, Bay Road, Coutts Street).

Capital City Duathlon Sunday 22nd December 2019 6.00am to 12.00pm:

- Massey Road (Scorching Bay to Northern entrance to Shelly Bay Base).

Johnsonville Christmas Parade Saturday 7th December 2019 6.00am to 12.00pm:

- Wanaka Street (6.00am to 4.00pm);
- Dr Taylor Terrace (6.00am to 1.30pm);
- Moorefield Street (between Haumia Street and Johnsonville Road roundabouts – 10.45am to 12.30pm);
- Moorefield Street (between Johnsonville Road and Middleton Road roundabouts – 11.00am to 12.30pm);
- Rotoiti Street (closed to through traffic – 11.00am to 12.30pm);
- Broderick Road (Phillip Street to Johnsonville Road – 11.00am to 12.30pm);
- Johnsonville Road (from Fraser Avenue intersection to Moorefield Road roundabout – 11.00am to 12.30pm);
- Frankmoore Avenue (between Earp Street and Moorefield Road – 11.00am to 12.30 pm).

Chinese New Year Parade Sunday 2nd February 2020 9.00am to 2.00pm:

- Tennyson Street (between Tory Street and Cambridge Terrace);
- The Parade is Tennyson Street to Cambridge Terrace, to Courtenay Place, to Taranaki Street, to Taranaki Street Wharf.

Wellington Round the Bays Sunday 16th February 2020 6.30am to 1.00pm:

- Customhouse Quay (Southbound lanes, from Whitmore to Jervois Quay) from 6.30am to 11.00am);
- Jervois Quay (Southbound lanes from Customhouse Quay to Cable Street) from 6.30am to 11.00am) includes all point of entry of All side roads);
- Cable Street (between Jervois Quay and Oriental Parade – with the exception of the right hand lane which will be open from Chaffers Street to Kent Terrace) from 7.00am to 11.00am;
- The right hand lane is to remain open from Chaffers New World to turn right into Kent Terrace;
- Oriental Parade (all of Oriental Parade) from 7.15am to 11.00am;
- Oriental Parade and all joining roads (Herd St, Freyberg Pool carpark, Oriental Tce, Hay St, and Grass Tce) Closed to Carlton Gore Road 7.15am to 11.00am;
- Evans Bay Parade (between Oriental Parade and Cobham Drive) from 7.15am to 12 noon;
- Evans Bay Parade (between Cobham Drive and Kilbirnie Crescent (from 7.15am to 1.00pm;

- Wellington Road (one way east between Crawford Road and Ruahine Street) from 7.15am to 12.00pm;
- Shelly Bay Road from 7.30am to 12 noon;
- Massey Road (between Shelly Bay Road and approximately Point Gordon) from 7.30am to 12 noon.

Background

3. The Council receives numerous requests throughout the year for public roads to be closed for public and private events. In order for the closures to have effect, under Schedule 10 of the Local Government Act 1974, council approval is required.

The authority to approve request for road closures is made under Schedule 10, clause 119e), of the Local Government Act 1974 and the Transport (Vehicular Traffic Road Closure) Regulations 1965. This authority is delegated to the Regulatory Processes Committee.

The report has been prepared in accordance with the procedures that were approved by the Committee on 15th December 2010. In summary, these are:

- a. An event organiser applies for a road closure where a proposed event requires approval. Council officers receive the proposal and assess the merits and need for a road closure.
- b. The Council advertises its intention to close the road in the public notice column of the local newspaper and on social media.
- c. Together with the event organiser, Council officers ensure consultation with affected stakeholders is carried out and a communication plan is formulated.
- d. Any objections are followed up and resolved as far as practical.
- e. The event organiser works together with Council officers who modify any plans in response to public submissions and prepare an impact report for the Committee.
- f. Council officers recommend any conditions that should apply to the approval.
- g. The Committee deliberates on the proposed road closure.
- h. A Council officer notifies the event organiser of the Committee's decision.
- i. If the proposed closure is approved, Council officers ensure the event organisers follow the agreed communications plan including notifying the public and affected parties. The event is also monitored to ensure the traffic management plan is adhered to and any associated conditions are followed to keep the public safe and to avoid any unreasonable impact on traffic.

Discussion

- 4. These are Annual events that are held every year and have associated Traffic Management plans. These are re-submitted for approval within one month of the event taking place. They are assessed by the Compliance and Customer team.

Options

- 5. Event organisers will be advised of the road closure not being approved.

Next Actions

- 6. If the road closure is approved, event organisers will be notified with the conditions and what Council requires before the event date.

Attachments

Attachment 1.	Wellington Night Market - Impact Report	Page 51
Attachment 2.	Wellington Night Market Map	Page 55
Attachment 3.	Kilbirnie Santa Parade - Impact Report	Page 56
Attachment 4.	Kilbirnie Santa Parade Map	Page 60
Attachment 5.	Capital City Duathlon - Impact Report	Page 61
Attachment 6.	Capital City Duathlon Map	Page 65
Attachment 7.	Johnsonville Christmas Parade - Impact Report	Page 66
Attachment 8.	Johnsonville Christmas Parade Map	Page 70
Attachment 9.	Chinese New Year Parade - Impact Report	Page 71
Attachment 10.	Chinese New Year Parade Map	Page 75
Attachment 11.	Wellington Round the Bays - Impact Report	Page 76
Attachment 12.	Wellington Round the Bays Map	Page 81

Author	Maria Taumaa, Street Activities Coordinator
Authoriser	Jacqui Austin, Street Activities Officer Siobhan Procter, Manager, Transport and Infrastructure Moana Mackey, Acting Chief City Planner

SUPPORTING INFORMATION

Engagement and Consultation

Council's intention to consider the proposed temporary road closures were all advertised in the Dominion Post. They have also been notified on Social Media; Have Your Say, Facebook, Twitter, Neighbourly and Resident Associations. These advertisements invited the public to make submission on the proposed road closures.

Event organisers have also consulted the following government agencies and associated organisations:

- New Zealand Police
- Ministry of Transport
- Fire and Emergency New Zealand
- Wellington Free Ambulance
- Public Transport Operators
- Relevant Council Business Units, e.g. Roading, Communications, WREDA.

Any correspondence received in response to the proposed closures has been included in the attached impact reports.

The City Events Team has assessed the proposed events with regard to their contribution towards Council's strategies and policies. The proposed events support the Council's strategy of being the "Events Capital" and will contribute to the economic success of the city.

Treaty of Waitangi considerations

There are no Treaty of Waitangi implications.

Financial implications

The administration of event is managed under Project C481. There are no unforeseen costs associated with these events.

Policy and legislative implications

A Council Traffic engineer has assessed the proposed road closures with regard to the expected impact on traffic. This information is part of the impact reports.

Risks / legal

Nil

Climate Change impact and considerations

N/A

Communications Plan

Residents and Retailers affected by the Road Closure will be notified by letter drop or contacted by the event organiser.

Event organisers will continue to work with Resident Associations, community groups and Local businesses to address any outstanding issues if the proposed road closures are approved.

Health and Safety Impact considered

Health and Safety is covered by the event management plan submitted to Council for approval prior to the event. This is assessed together with the traffic management plan to ensure the event and associated road closures are managed safely.

REGULATORY COMMITTEE

Absolutely Positively
Wellington City Council
Me Heke Ki Pōneke

PROPOSED TEMPORARY ROAD CLOSURE IMPACT REPORT

WELLINGTON NIGHT MARKET

5 OCTOBER 2019 TO 31 OCTOBER 2020 2PM TO 11.30AM

1. Description of Event

The Coolest Street in Wellington, in the Coolest Capital of the World.

This event has already been running for the last 36 months and has received a lot of support from residents, retailers and members of the public. The organisers would like to extend the Wellington Night Markets success through to 2020.

It is a popular place where people can come every week, to find something new, to try something different to eat, to shop, to play and enjoy.

Generally businesses and residents support the ongoing operation of a night market.

The proposed road closure is for: Saturday 5 October 2019 to 31 October 2020 from 2 pm to 11.30 pm

- Manners Street (between Taranaki Street and Cuba Street)
- Cuba Street (between Manners Street and Wakefield Street)

Road closure notification boards will be placed at each end of the closure at least 5 working days prior to the event.

The event will be managed by a qualified temporary traffic management company. Pedestrians access will not be restricted and emergency services will have immediate access to the area if required.

2. Events Directorate Support

The Events Directorate has no connection with, and no objection to this event

3. Proposal Notice and Consultation

The public notice advertising that the Council is proposing to consider this closure was published in the following:

- Dominion Post Saturday 22 June 2019
- Have Your Say 26 June 2019
- Facebook 26 June 2019
- Twitter 26 June 2019

The New Zealand Police and the Ministry of Transport have also been consulted with.

4. Objections

There have been NO objections to this closure request.

5. Traffic Impact Assessment

Prior Closures

None of the proposed closures for this event will result in a road being closed for an aggregate of more than 31 days in any year.

Traffic Impact

In the opinion of Jacqui Austin, Team Leader, Street Activities and Audit Coordination, acting as the Council's Traffic Engineer, the proposed closure, if implemented according to the plans provided, is not likely to impede traffic unreasonably subject to the conditions stated below. However, the Council reserves the right to modify this opinion at any time. If, in the opinion of the Council, the closure may or does impede traffic unreasonably, any approval granted by the Temporary Road Closures subcommittee may be revoked and the event organiser may be required to re-open the road at the direction of a suitably qualified Council officer in charge of traffic.

Lower Cuba Street was intended to be an event space that was never used. Setting up the night market in that space uses the area regularly and any other event that wants to use that space is able to. Some of the closures will be included in other events e.g Cuba Dupa, Jazz Festival and Film Festival.

Conditions:

- The road closures will start at 2 pm and finish at 11.30 pm each Saturday. The event organiser is to obtain Council approval on the details of a traffic management plan prior to the event.
- The detour route is to be clearly signed during road closures.
- Only authorised vehicles will be allowed within the road closure area, travelling at no more than walking speed (3km/h) to ensure public safety is not compromised.
- The event organiser will publicise the event via media releases, letter drops and advanced signage to notify the public of the road closures.
- The event organiser is responsible for the ongoing maintenance of the temporary traffic management plan during the road closures.
- The event organiser is to ensure buses are able to enter Manners st during the road closure timeframe.
- The event organiser is responsible for maintaining public safety within the Road closure area.
- The event organiser is to consult and gain approval from the emergency services on the road closure and provide access for emergency vehicles.




Signed
Jacqui Austin
Team Leader Street Activities and Audit Coordination

6. Attachments

- Map of proposed closure
- Copy of proposal notice from the newspaper

Prepared By:
Maria Taumaa
Street Activities Coordinator



Proposal to Close Roads

The Regulatory Processes Committee will meet on Wednesday 14 August 2019 to consider the following temporary road closures for events.

Cuba Night Market

Only Saturdays from October 5 2019 to Saturday 31 October 2020

Road Closures 2pm to 11.30pm

Cuba Street (from Manners Street to Wakefield Street)

Manners Street (Taranaki Street to Cuba Street)

Bus Lane is open but closed to other vehicles

Kilbirnie Santa Parade

Sunday 1 December 2019 6am to 1pm

Road Closures

Bay Road (between Rongotai Road and Coutts Street)

Rolling Road Closures for Parade 10.30am to 11.00am

Mahora Street, Rongotai Road, Bay Road, Coutts Street

Johnsonville Christmas Parade

Saturday 7 December 2019 6.00am to 2.00pm

Wanaka Street (6am to 1.30pm)

Dr Taylor Terrace (6am to 1.30pm)

Moorefield Road (between Haumia Street and Johnsonville Road roundabouts - 10.45am to 12.00pm)

Rotoiti Street (closed to through traffic - 11am to 12.30pm)

Broderick Road (Phillip Street to Johnsonville Road 11am to 12.30pm)

Johnsonville Road (from Fraser Avenue intersection to Moorefield Road roundabout - 11am to 12.30pm)

Frankmoore Avenue (between Earp Street and Moorefield Road - 11am to 12.30pm)

No Parking 7am to 1pm - Bannister Avenue, Broderick Road, (Bannister Avenue to Phillip Street) Phillip Street, Frankmoore Avenue (Phillip Street to Earp Street) Earp Street

Detour - Johnsonville Road, Fraser Avenue, Haumia Street, Bannister Avenue, Broderick Road, Phillip Street, Frankmoore Avenue, Earp Street

Detour Route - Johnsonville Road, Fraser Avenue, Haumia Street, Bannister Avenue, Broderick Road, Phillip Street, Frankmoore Avenue, Earp Street, Ironside Road, Middleton Road and State Highway 1

Khandallah Fair

Sunday 9 December 2019 6.00am to 6.00pm

Road Closures

Ganges Road (from Agra Crescent to Dekka Street)

Capital City Triathlon

Sunday 22nd December 2019 6am to 12pm

Road Closures

Massey Road (between Scorching Bay and Northern entrance to Shelly Bay)

Chinese New Year Parade

Sunday 2 Feb 2020 9am to 2pm

Road Closures

Tennyson Street (between Cambridge Terrace and Tory Street)

Rolling Road Closures for Parade 2.00pm to 3pm

Tennyson Street, Cambridge Terrace, Courtenay Place, Taranaki Street to Taranaki Street wharf

Wellington Round the Bays

Sunday 16 February 2020 6.30am to 1.00pm

Customhouse Quay (Southbound lanes, from Whitmore to Jervois Quay) from 6.30am to 11.00am

Jervois Quay (South bound lanes from Customhouse Quay to Cable Street) from 6.30am to 11.00am

Cable Street (between Jervois Quay and Oriental Parade - with exception of the right hand lane which will open from Chaffers Street to Kent Terrace) from 7.00am to 11.00am

Oriental Parade (all of Oriental Parade from 7.15am to 11.00am)

Evans Bay Parade (between Cobham Drive and Kilbirnie Crescent) from 7.15am to 12noon

Wellington Road (one way east between Crawford Road and Ruahine Street) from 7.15am to 12.00pm

Shelly Bay Road (all of Shelly Bay Road) from 7.30am to 12noon

Massey Road (between Shelly Bay Road and approximately Point Gordon) from 7.30am to 12noon.

All arterial roads joining Evans Bay Parade closed 7.15am to 12noon

Hataitai - Taurima Street and Goa Street - No entry into Hataitai from 7.15am to 11.30am. Traffic can exit from Hataitai

Kilbirnie Crescent/Hamilton Road/Wellington Road

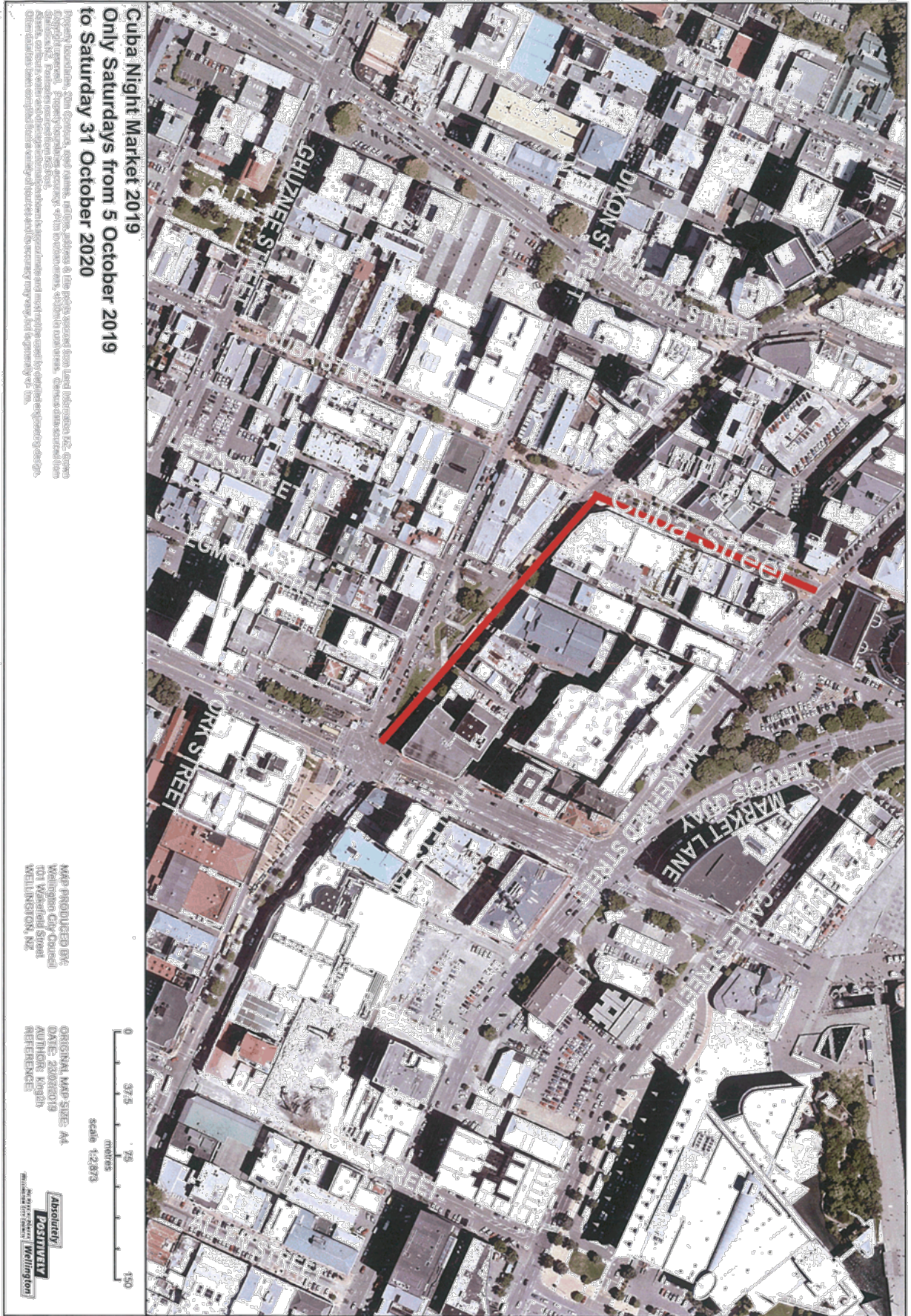
intersection to the Evans Bay Parade/Cobham Drive/Wellington Road intersection, road closure from 7.15am - 12.30pm (northbound) 7.15am - 11.30am (southbound)

Any person objecting to a proposed road closure must Contact the City Council in writing before 4pm, Friday 5 July 2019. Please send correspondence to Maria Taumaa at mailing address below, by fax 801 3009 or by email maria.taumaa@wcc.govt.nz

Wellington City Council
PO Box 2199, Wellington 6140
Wellington.govt.nz

Absolutely Positively
Wellington City Council
Me Heke Ki Pōneke

Saturday, June 22, 2019 The Dominion Post C15



REGULATORY PROCESSES COMMITTEE

Absolutely Positively
Wellington City Council
Me Heke Ki Pōneke

PROPOSED TEMPORARY ROAD CLOSURE – IMPACT REPORT

KILBIRNIE SANTA PARADE

SUNDAY 1 DECEMBER 2019 6.00AM TO 1.00PM

1. Description of Event

The Kilbirnie Business Network wish to organise the Kilbirnie Santa Parade for 1 December 2019. Drawing from past experience they are looking for more local community participation to provide a community focussed event. The parade will run from approximately 10.00am to 12 noon by way of a rolling road closure. All activities will be contained within Bay Road and adjoining spaces.

The proposed road closure is: Sunday 1 December 2019 6.00 am to 1.00pm

- Bay Road (between Rongotai Road and Coufts Street)
- Rolling road closure (Mahora Street, Rongotai Road, Bay Road, Coufts Street)

The road closure is to be carried out under a temporary traffic management plan - the details of which will be subject to approval prior to the event.

Road closure notification signs will be placed at each end of the closure at least 10 working days prior to the event. Residents and local businesses will receive a letter drop advising them of the road closure and the parking restrictions. The road closure is to be traffic managed by a qualified traffic management company. Emergency services will have immediate access to the area if required.

2. Events Directorate Support

The Events Directorate has no connection with, and no objection to this event.

3. Proposal Notice and Consultation

The public notice advising that the Council is proposing to consider this closure was published in the following:

- Dominion Post on Saturday 22 June 2019
- Facebook 26 June 2019
- Twitter 26 June 2019
- Neighbourly 26 June 2019
- Kilbirnie Residents Association
- Kilbirnie Retailers Association

The New Zealand Police and the Ministry of Transport have also been consulted with.

4. Objections

5. Traffic Impact Assessment

Prior Closures

None of the proposed closures for this event will result in a road being closed for an aggregate of more than 31 days in any year.

Traffic Impact

In the opinion of Jacqui Austin, Team Leader, Street Activities and Audit Coordination, acting as the Council's Traffic Engineer, the proposed closure, if implemented according to an approved traffic management plan, is not likely to impede traffic unreasonably subject to the conditions listed below. However, the Council reserves the right to modify this opinion at any time. If, in the opinion of the Council, the closure may or does impede traffic unreasonably, any approval granted by the Regulatory Processes Committee may be revoked and the event organiser may be required to open the road at the direction of a suitably qualified Council officer in charge of traffic.

Conditions:

- The road closure is to be in place from 6.00am to 1.00pm
- The event organiser is to notify the public via newspaper advertisement, letter drop, advanced signage and media releases.
- The event organiser is to obtain Council approval on the details of a traffic management plan prior to the event.
- The event organiser is responsible for safety (pedestrian and traffic) within the closed area.
- The event organiser is to provide marshals at all road closure ends to ensure that public safety (interaction of traffic and spectators) is not compromised.
- The event organiser is to provide marshalled vehicle access to all properties affected by the closure.
- The event organiser is to work with the public transport operations to provide alternative public transport routes and bus stops if required.
- The event organiser is to consult with emergency services on the road closure and ensure the TMP includes their specific requirements.
- The event organiser is to provide Council with an Event Hazard/Risk management plan 10 working days prior to the event that describes in full how the event organiser will manage all the Health and Safety risks associated with the event.

Signed 
Jacqui Austin
Team Leader, Street Activities and Audit Coordination

6. Attachments

- Map of proposed closure
- Copy of proposal notice from the newspaper

Prepared By:
Maria Taumaa
Street Activities Coordinator



Proposal to Close Roads

The Regulatory Processes Committee will meet on Wednesday 14 August 2019 to consider the following temporary road closures for events.

Cuba Night Market

Only Saturdays from October 5 2019 to Saturday 31 October 2020

Road Closures 2pm to 11.30pm

Cuba Street (from Manners Street to Wakefield Street)
Manners Street (Taranaki Street to Cuba Street)
Bus Lane is open but closed to other vehicles.

Kilbirnie Santa Parade

Sunday 1 December 2019 6am to 1pm

Road Closures

Bay Road (between Rongotai Road and Coutts Street)

Rolling Road Closures for Parade 10.30am to 11.00am

Mahora Street, Rongotai Road, Bay Road, Coutts Street

Johnsonville Christmas Parade

Saturday 7 December 2019 6.00am to 2.00pm

Wanaka Street (6am to 1.30pm)

Dr Taylor Terrace (6am to 1.30pm)

Moorefield Road (between Haumia Street and Johnsonville Road roundabouts - 10.45am to 12.00pm)

Rotoiti Street (closed to through traffic - 11am to 12.30pm)

Broderick Road (Phillip Street to Johnsonville Road 11am to 12.30pm)

Johnsonville Road (from Fraser Avenue intersection to Moorefield Road roundabout - 11am to 12.30pm)

Frankmoore Avenue (between Earp Street and Moorefield Road - 11am to 12.30pm)

No Parking 7am to 1pm - Bannister Avenue, Broderick Road, (Bannister Avenue to Phillip Street) Phillip Street, Frankmoore Avenue (Phillip Street to Earp Street) Earp Street

Detour - Johnsonville Road, Fraser Avenue, Haumia Street, Bannister Avenue, Broderick Road, Phillip Street, Frankmoore Avenue, Earp Street

Detour Route - Johnsonville Road, Fraser Avenue, Haumia Street, Bannister Avenue, Broderick Road, Phillip Street, Frankmoore Avenue, Earp Street, Ironside Road, Middleton Road and State Highway 1

Khandallah Fair

Sunday 9 December 2019 6.00am to 6.00pm

Road Closures

Ganges Road (from Agra Crescent to Dekka Street)

Capital City Triathlon

Sunday 22nd December 2019 6am to 12pm

Road Closures

Massey Road (between Scorching Bay and Northern entrance to Shelly Bay)

Chinese New Year Parade

Sunday 2 Feb 2020 9am to 2pm

Road Closures

Tennyson Street (between Cambridge Terrace and Tory Street)

Rolling Road Closures for Parade 2.00pm to 3pm

Tennyson Street, Cambridge Terrace, Courtenay Place, Taranaki Street to Taranaki Street wharf

Wellington Round the Bays

Sunday 16 February 2020 6.30am to 1.00pm

Customhouse Quay (Southbound lanes, from Whitmore to Jervois Quay) from 6.30am to 11.00am

Jervois Quay (South bound lanes from Customhouse Quay to Cable Street) from 6.30am to 11.00am

Cable Street (between Jervois Quay and Oriental Parade - with exception of the right hand lane which will open from Chaffers Street to Kent Terrace) from 7.00am to 11.00am

Oriental Parade (all of Oriental Parade from 7.15am to 11.00am)

Evans Bay Parade (between Cobham Drive and Kilbirnie Crescent) from 7.15am to 12noon

Wellington Road (one way east between Crawford Road and Ruahine Street) from 7.15am to 12.00pm

Shelly Bay Road (all of Shelly Bay Road) from 7.30am to 12noon

Massey Road (between Shelly Bay Road and approximately Point Gordon) from 7.30am to 12noon.

All arterial roads joining Evans Bay Parade closed 7.15am to 12noon

Hataitai - Taurima Street and Goa Street - No entry into Hataitai from 7.15am to 11.30am. Traffic can exit from Hataitai

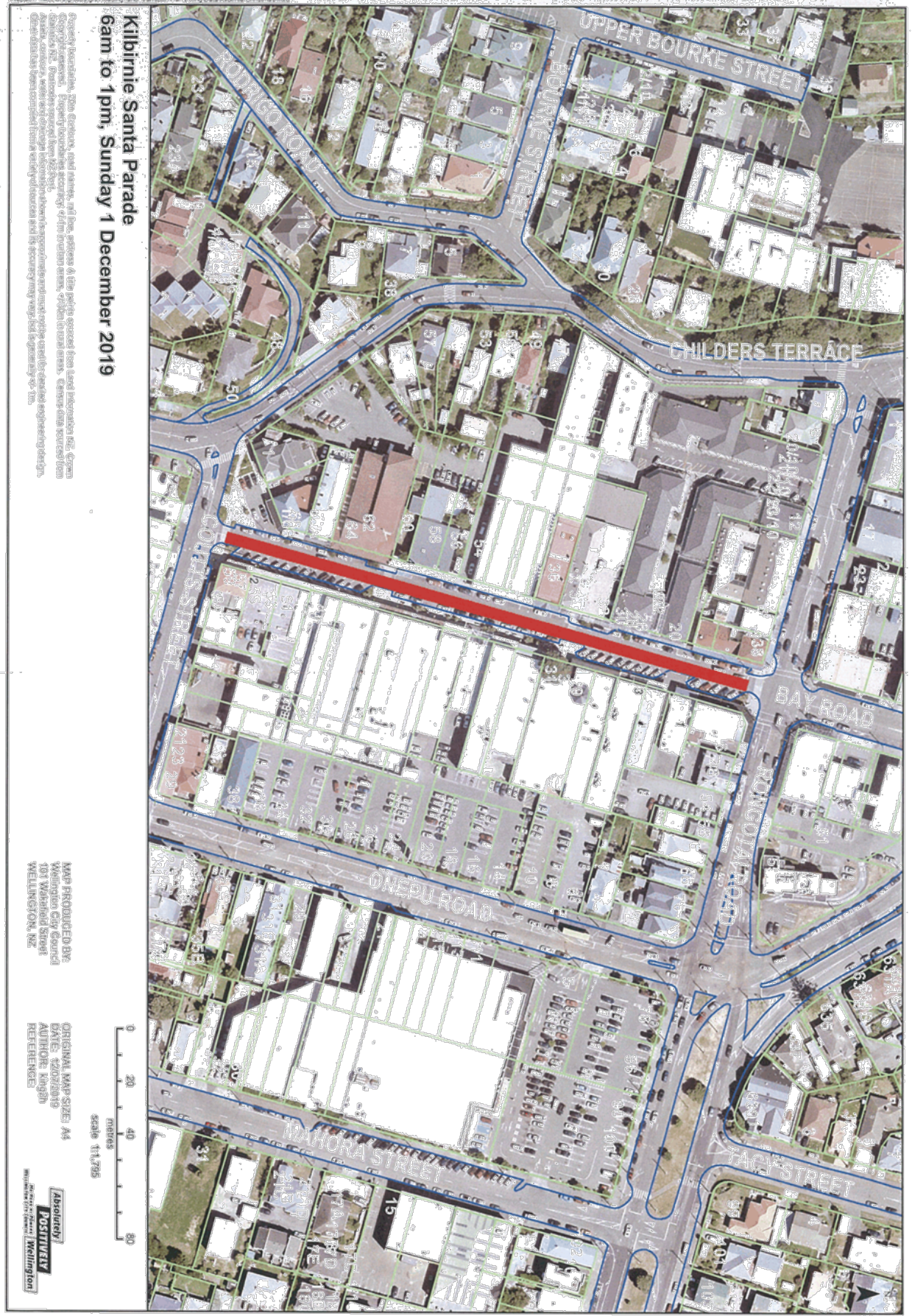
Kilbirnie Crescent/Hamilton Road/Wellington Road intersection to the Evans Bay Parade/Cobham Drive/Wellington Road intersection, road closure from 7.15am - 12.30pm (northbound) 7.15am - 11.30am (southbound)

Any person objecting to a proposed road closure must contact the City Council in writing before 4pm, Friday 5 July 2019. Please send correspondence to Maria Taumaa at mailing address below, by fax 801 3009 or by email maria.taumaa@wcc.govt.nz

Wellington City Council
PO Box 2199, Wellington 6140
Wellington.govt.nz

Absolutely Positively
Wellington City Council
Me Heke Ki Pōneke

Saturday, June 22, 2019 The Dominion Post C15



Kilbirnie Santa Parade
6am to 1pm, Sunday 1 December 2019

Copyright Wellington City Council. This document, and the information it contains, is the property of Wellington City Council. It is provided for your information only. It is not to be used for any other purpose. All rights reserved. No part of this document may be reproduced, stored in a retrieval system, or transmitted in any form or by any means, electronic, mechanical, photocopying, recording, or by any information storage and retrieval system, without the prior written permission of Wellington City Council.

MAP PRODUCED BY:
Wellington City Council
101 Waterloo Street
WELLINGTON, NZ

ORIGINAL MAP SIZE: A4
DATE: 22/02/2019
AUTHOR: KROGH
REFERENCE:



REGULATORY PROCESSES COMMITTEE

Absolutely Positively
Wellington City Council
Me Heke Ki Pōneke

PROPOSED TEMPORARY ROAD CLOSURE – IMPACT REPORT

CAPITAL CITY DUATHLON
SUNDAY 22ND DECEMBER 2019 6AM TO 12PM

1. Description of Event

Capital City Triathlon was formed in 2017 after Scorching Events ended their 13 year event series in Wellington. Duathlon and triathlon events are run in association with the Wellington Triathlon Club to ensure that Wellington triathletes have access to local races. The events are designed to be low key and informal to ensure that new and or nervous athletes can participate in a relaxed, unthreatening and friendly environment. They cater for all abilities and the aim is to encourage more people to participate, as well as allowing those with a triathlon on their "bucket-list" to take part. It is a repeat event that happens every year, and to date there has been no issues.

The proposed road closure is: Sunday 22nd December 2019 6am to 12pm

- Massey Road (Scorching Bay to Northern entrance to Shelly Bay Base)

Road closure notification boards will be placed at each end of the closure at least 10 working days prior to the event. Residents and retailers will receive a letter or be contacted in person, to advise them of the event and the road closures and parking restrictions at the same time. The road closure will be managed by a qualified traffic management company.

2. Events Directorate Support

The Events Directorate has no connection with and no objection to this event.

3. Proposal Notice and Consultation

A public notice advising that the Council is proposing to consider this closure was published in the following:

- Dominion Post Saturday 25 June 2019
- Have Your Say 26 June 2019
- Facebook 26 June 2019
- Twitter 26 June 2019

There were no issues from the debrief session that occurred after the 2018 Duathlon.

The New Zealand Police and the Ministry of Transport have also been consulted with.

4. Objections

There have been NO objections to this closure request.

5. Traffic Impact Assessment

Prior Closures

None of the proposed closures for this event will result in a road being closed for an aggregate of more than 31 days in any year.

Traffic Impact

In the opinion of Jacqui Austin, Team Leader Street Activities and Audit Coordination, acting as the Council's Traffic Engineer, the proposed closure, if implemented according to an approved traffic management plan, is not likely to impede traffic unreasonably subject to the conditions listed below. However, the Council reserves the right to modify this opinion at any time. If, in the opinion of the Council, the closure may or does impede traffic unreasonably, any approval granted by the Regulatory Processes Committee may be revoked and the event organiser may be required to open the road at the direction of a suitably qualified Council officer in charge of traffic.

Conditions:

- The event organiser is to notify the public via letter drop, advanced signage and media releases.
- The event organiser is to obtain Council approval on the details of a traffic management plan prior to the event.
- The event organiser is responsible for safety (pedestrian and traffic) within the closed area.
- The event organiser is to provide marshals at all road closure ends to ensure that public safety (interaction of traffic and spectators) is not compromised.
- The event organiser must have a Health and Safety plan, which covers how Emergency vehicles are required to enter the road closure site if required.
- The road closure is valid from 6am to 12pm.
- It is the event organiser that is responsible for the maintenance of the temporary traffic management plan during the road closure.
- The event organiser is to ensure that the affected property owners along the road closures are consulted with (in particular Retailers and Residents with the road closure area).
- The event organiser is to ensure a debrief session is held shortly after the event.

Signed 
Jacqui Austin
Team Leader, Street Activities and Audit Coordination

6. Attachments

- Map of proposed closure
- Copy of the Dom Post Public notice

Prepared By
Maria Taumaa
Street Activities Coordinator



Proposal to Close Roads

The Regulatory Processes Committee will meet on Wednesday 14 August 2019 to consider the following temporary road closures for events.

Cuba Night Market

Only Saturdays from October 5 2019 to Saturday 31 October 2020

Road Closures 2pm to 11.30pm

Cuba Street (from Manners Street to Wakefield Street)

Manners Street (Taranaki Street to Cuba Street)

Bus Lane is open but closed to other vehicles

Kilbirnie Santa Parade

Sunday 1 December 2019 6am to 1pm

Road Closures

Bay Road (between Rongotai Road and Coutts Street)

Rolling Road Closures for Parade 10.30am to 11.00am

Mahora Street, Rongotai Road, Bay Road, Coutts Street

Johnsonville Christmas Parade

Saturday 7 December 2019 6.00am to 2.00pm

Wanaka Street (6am to 1.30pm)

Dr Taylor Terrace (6am to 1.30pm)

Moorefield Road (between Haumia Street and Johnsonville Road roundabouts - 10.45am to 12.00pm)

Rotoiti Street (closed to through traffic - 11am to 12.30pm)

Broderick Road (Phillip Street to Johnsonville Road 11am to 12.30pm)

Johnsonville Road (from Fraser Avenue intersection to Moorefield Road roundabout - 11am to 12.30pm)

Frankmoore Avenue (between Earp Street and Moorefield Road - 11am to 12.30pm)

No Parking 7am to 1pm - Bannister Avenue, Broderick Road, (Bannister Avenue to Phillip Street) Phillip Street, Frankmoore Avenue (Phillip Street to Earp Street) Earp Street

Detour - Johnsonville Road, Fraser Avenue, Haumia Street, Bannister Avenue, Broderick Road, Phillip Street, Frankmoore Avenue, Earp Street

Detour Route - Johnsonville Road, Fraser Avenue, Haumia Street, Bannister Avenue, Broderick Road, Phillip Street, Frankmoore Avenue, Earp Street, Ironside Road, Middleton Road and State Highway 1

Khandallah Fair

Sunday 9 December 2019 6.00am to 6.00pm

Road Closures

Ganges Road (from Agra Crescent to Dekka Street)

Capital City Triathlon

Sunday 22nd December 2019 6am to 12pm

Road Closures

Massey Road (between Scorching Bay and Northern entrance to Shelly Bay)

Chinese New Year Parade

Sunday 2 Feb 2020 9am to 2pm

Road Closures

Tennyson Street (between Cambridge Terrace and Tory Street)

Rolling Road Closures for Parade 2.00pm to 3pm

Tennyson Street, Cambridge Terrace, Courtenay Place, Taranaki Street to Taranaki Street wharf

Wellington Round the Bays

Sunday 16 February 2020 6.30am to 1.00pm

Customhouse Quay (Southbound lanes, from Whitmore to Jervois Quay) from 6.30am to 11.00am

Jervois Quay (South bound lanes from Customhouse Quay to Cable Street) from 6.30am to 11.00am

Cable Street (between Jervois Quay and Oriental Parade - with exception of the right hand lane which will open from Chaffers Street to Kent Terrace) from 7.00am to 11.00am

Oriental Parade (all of Oriental Parade from 7.15am to 11.00am)

Evans Bay Parade (between Cobham Drive and Kilbirnie Crescent) from 7.15am to 12noon

Wellington Road (one way east between Crawford Road and Ruahine Street) from 7.15am to 12.00pm

Shelly Bay Road (all of Shelly Bay Road) from 7.30am to 12noon

Massey Road (between Shelly Bay Road and approximately Point Gordon) from 7.30am to 12noon.

All arterial roads joining Evans Bay Parade closed 7.15am to 12noon

Hataitai - Taurima Street and Goa Street - No entry into Hataitai from 7.15am to 11.30am. Traffic can exit from Hataitai

Kilbirnie Crescent/Hamilton Road/Wellington Road intersection to the Evans Bay Parade/Cobham Drive/Wellington Road intersection, road closure from 7.15am - 12.30pm (northbound) 7.15am - 11.30am (southbound)

Any person objecting to a proposed road closure must contact the City Council in writing before 4pm, Friday 5 July 2019. Please send correspondence to Maria Taumaa at mailing address below, by fax 801 3009 or by email maria.taumaa@wcc.govt.nz

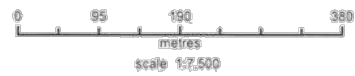
Wellington City Council
PO Box 2199, Wellington 6140
Wellington.govt.nz

Absolutely Positively
Wellington City Council
Me Heke Ki Pōneke

Saturday, June 22, 2019 The Dominion Post C15



Capital City Triathlon
Massey Road
Sunday 22 December 2019 6am to 12pm



Property boundaries, 20m contours, road names, call site, address & title points sourced from Land Information NZ. Open
Copyright retained. Property boundaries accuracy <10m in urban areas, <100m in rural areas. Contour data sourced from
Statistics NZ. Footpaths sourced from NZ Post.
Assets, contours, water and drainage information shown is approximate and not to be used for detailed engineering design.
Other data has been compiled from a variety of sources and its accuracy may vary, but is generally <1-10m.

MAP PRODUCED BY:
Wellington City Council
101 Wakefield Street
WELLINGTON, NZ

ORIGINAL MAP SIZE: A4
DATE: 16/07/2019
AUTHOR: kleg2h
REFERENCE:



REGULATORY PROCESSES COMMITTEE

Absolutely Positively
Wellington City Council
Me Heke Ki Pōneke

PROPOSED TEMPORARY ROAD CLOSURE – IMPACT REPORT

JOHNSONVILLE CHRISTMAS PARADE
SATURDAY 7 DECEMBER 2019 6.00AM TO 2.00PM

1. Description of Event

The 15th Annual Johnsonville Community Christmas parade with an estimated 10,000 spectators will be held this year on Saturday 7 December 2019. The highlight of the weekend is the Lions Club of Johnsonville Christmas Parade. This non-profit event is similar to that run in previous years and seeks to bring the community together in an enjoyable pre-Christmas celebration. The event is well supported by the community, including local businesses and the local Police. The Johnsonville Lions Club has a core of very dedicated members, organisers and marshals who put a large amount of un-paid time and effort into this event. The Christmas Parade itself attracts thousands of spectators and involves many local participants and floats. The proposed road closures are required for the parade set-up, the parade itself and for the temporary traffic detour route.

The proposed road closures are: Saturday 7th December 2019 6am to 12pm

- Wanaka Street (6am to 4pm)
- Dr Taylor Terrace (6am to 1:30pm)
- Moorefield Road (between Haumia Street and Johnsonville Road roundabouts – 10:45am to 12:00pm)
- Moorefield Road (between Johnsonville Road and Middleton Road roundabouts - 11am to 12:30pm)
- Rotoiti Street (closed to through traffic - 11am to 12:30pm)
- Broderick Road (Phillip Street to Johnsonville Road - 11am to 12:30pm)
- Johnsonville Road (from Fraser Avenue intersection to Moorefield Road roundabout – 11am to 12:30pm)

Frankmoore Avenue (between Earp Street and Moorefield Road - 11am to 12:30pm).

No Parking 6.30am to 3pm - Moorefield Road (western side from Wanaka Street to Frankmoore Avenue).

No Parking 7am to 1pm - Bannister Avenue, Broderick Road (Bannister Avenue to Phillip Street), Phillip Street, Frankmoore Avenue (Phillip Street to Earp Street), Earp Street.

Detour Route - Johnsonville Road, Fraser Avenue, Haumia Street, Bannister Avenue, Broderick Road, Phillip Street, Frankmoore Avenue, Earp Street, Ironside Road, Middleton Road and State Highway 1.

The event does cause some disruption to traffic in the area for a period of approximately 2 hours. There are also extensive no parking areas to allow for the traffic detour route, the parade route and the parade set-up. The temporary road closures, no parking areas, detour route and the parade itself will be managed by a combined team of the local Police, Lions Club marshals, a registered traffic management company and Parking wardens. Pedestrian access will not be restricted and emergency services will have immediate access to the area if required.

Approved public information signage will be in place well ahead of the event. Residents affected by the road closures, detour and no parking areas will be notified by way of letter drops and notification signage. Buses will be diverted to the bus stop outside the Post Office on Johnsonville Road to replace the Railway Station stop (the same arrangement as previously used).

2. Events (Business Development) Support

The Events Business Unit has no connection with, and no objection to, this event.

3. Proposal Notice and Consultation

The public notice that the Council is proposing to consider this closure was published in the following newspaper and social media:

- Dominion Post Saturday 25 June 2019
- Facebook 26 June 2019
- Twitter 26 June 2019
- Have Your Say 26 June 2019

The New Zealand Police and the Ministry of Transport have also been consulted with.

4. Objections

There have been NO objections to this closure request.

5. Traffic Impact Assessment

Prior Closures

None of the proposed closures for this event will result in a road being closed for an aggregate of more than 31 days in any year.

Traffic Impact

In the opinion of Jacqui Austin, Team Leader Street Activities and Audit Coordination, acting as the Council's Traffic Engineer, the proposed closure, if implemented according to the plans provided, is likely to impede traffic flows on a major route. The proposed conditions below will mitigate some of the expected traffic congestion during the road closures. The expected congestion during the road closures is considered acceptable as part of facilitating a public event and ensuring safety for the general public. However, the Council reserves the right to modify this opinion at any time. If, in the opinion of the Council, the closure may or does impede traffic unreasonably, any approval granted by the Regulatory Processes Committee may be revoked and the event organiser may be required to open the road at the direction of a suitably qualified Council officer in charge of traffic.

Conditions:

- The road closures for the parade route will start at 10:30am and finish at 1:00pm.
- The detour route is to be clearly signed during road closures.
- No public vehicular traffic will be allowed within the road closure area to ensure public safety is not compromised with the exception of emergency vehicles.
- The event organiser will publicise the event via media releases, letter drops and advanced signage to notify the public of the road closures.
- The event organiser is responsible for the ongoing maintenance of the temporary traffic management plan during the road closures.
- The event organiser is responsible for maintaining public safety within the road closure area.
- The event organiser is to work with the public transport operators to provide alternative public transport routes and bus stops.
- The event organiser is to ensure that the emergency services (Police, Fire and Ambulance Services) have been consulted with and that the Traffic Management Plan includes all of their specific requirements.
- The event signage must be installed 10 working days before the event.
- The event organiser must provide a Health and Safety plan to Council 5 days before event.

Signed


Jacqui Austin

Team Leader, Street Activities and Audit Coordination

6. Attachments

- Map of proposed closure
- Copy of proposal notice from the newspaper

Prepared By:


Maria Taumaa

Street Activities Coordinator

Proposal to Close Roads

The Regulatory Processes Committee will meet on Wednesday 14 August 2019 to consider the following temporary road closures for events.

Cuba Night Market

Only Saturdays from October 5 2019 to Saturday 31 October 2020

Road Closures 2pm to 11.30pm

Cuba Street (from Manners Street to Wakefield Street)

Manners Street (Taranaki Street to Cuba Street)

Bus Lane is open but closed to other vehicles

Kilbirnie Santa Parade

Sunday 1 December 2019 6am to 1pm

Road Closures

Bay Road (between Rongotai Road and Coutts Street)

Rolling Road Closures for Parade 10.30am to 11.00am

Mahora Street, Rongotai Road, Bay Road, Coutts Street

Johnsonville Christmas Parade

Saturday 7 December 2019 6.00am to 2.00pm

Wanaka Street (6am to 1.30pm)

Dr Taylor Terrace (6am to 1.30pm)

Moorefield Road (between Haumia Street and Johnsonville Road roundabouts - 10.45am to 12.00pm)

Rotoiti Street (closed to through traffic - 11am to 12.30pm)

Broderick Road (Phillip Street to Johnsonville Road 11am to 12.30pm)

Johnsonville Road (from Fraser Avenue intersection to Moorefield Road roundabout - 11am to 12.30pm)

Frankmoore Avenue (between Earp Street and Moorefield Road - 11am to 12.30pm)

No Parking 7am to 1pm - Bannister Avenue, Broderick Road, (Bannister Avenue to Phillip Street) Phillip Street, Frankmoore Avenue (Phillip Street to Earp Street) Earp Street

Detour - Johnsonville Road, Fraser Avenue, Haumia Street, Bannister Avenue, Broderick Road, Phillip Street, Frankmoore Avenue, Earp Street

Detour Route - Johnsonville Road, Fraser Avenue, Haumia Street, Bannister Avenue, Broderick Road, Phillip Street, Frankmoore Avenue, Earp Street, Ironside Road, Middleton Road and State Highway 1

Khandallah Fair

Sunday 9 December 2019 6.00am to 6.00pm

Road Closures

Ganges Road (from Agra Crescent to Dekka Street)

Capital City Triathlon

Sunday 22nd December 2019 6am to 12pm

Road Closures

Massey Road (between Scorching Bay and Northern entrance to Shelly Bay)

Chinese New Year Parade

Sunday 2 Feb 2020 9am to 2pm

Road Closures

Tennyson Street (between Cambridge Terrace and Tory Street)

Rolling Road Closures for Parade 2.00pm to 3pm

Tennyson Street, Cambridge Terrace, Courtenay Place, Taranaki Street to Taranaki Street wharf

Wellington Round the Bays

Sunday 16 February 2020 6.30am to 1.00pm

Customhouse Quay (Southbound lanes, from Whitmore to Jervois Quay) from 6.30am to 11.00am

Jervois Quay (South bound lanes from Customhouse Quay to Cable Street) from 6.30am to 11.00am

Cable Street (between Jervois Quay and Oriental Parade - with exception of the right hand lane which will open from Chaffers Street to Kent Terrace) from 7.00am to 11.00am

Oriental Parade (all of Oriental Parade from 7.15am to 11.00am)

Evans Bay Parade (between Cobham Drive and Kilbirnie Crescent) from 7.15am to 12noon

Wellington Road (one way east between Crawford Road and Ruahine Street) from 7.15am to 12.00pm

Shelly Bay Road (all of Shelly Bay Road) from 7.30am to 12noon

Massey Road (between Shelly Bay Road and approximately Point Gordon) from 7.30am to 12noon

All arterial roads joining Evans Bay Parade closed 7.15am to 12noon

Hataitai - Taurima Street and Goa Street - No entry into Hataitai from 7.15am to 11.30am. Traffic can exit from Hataitai

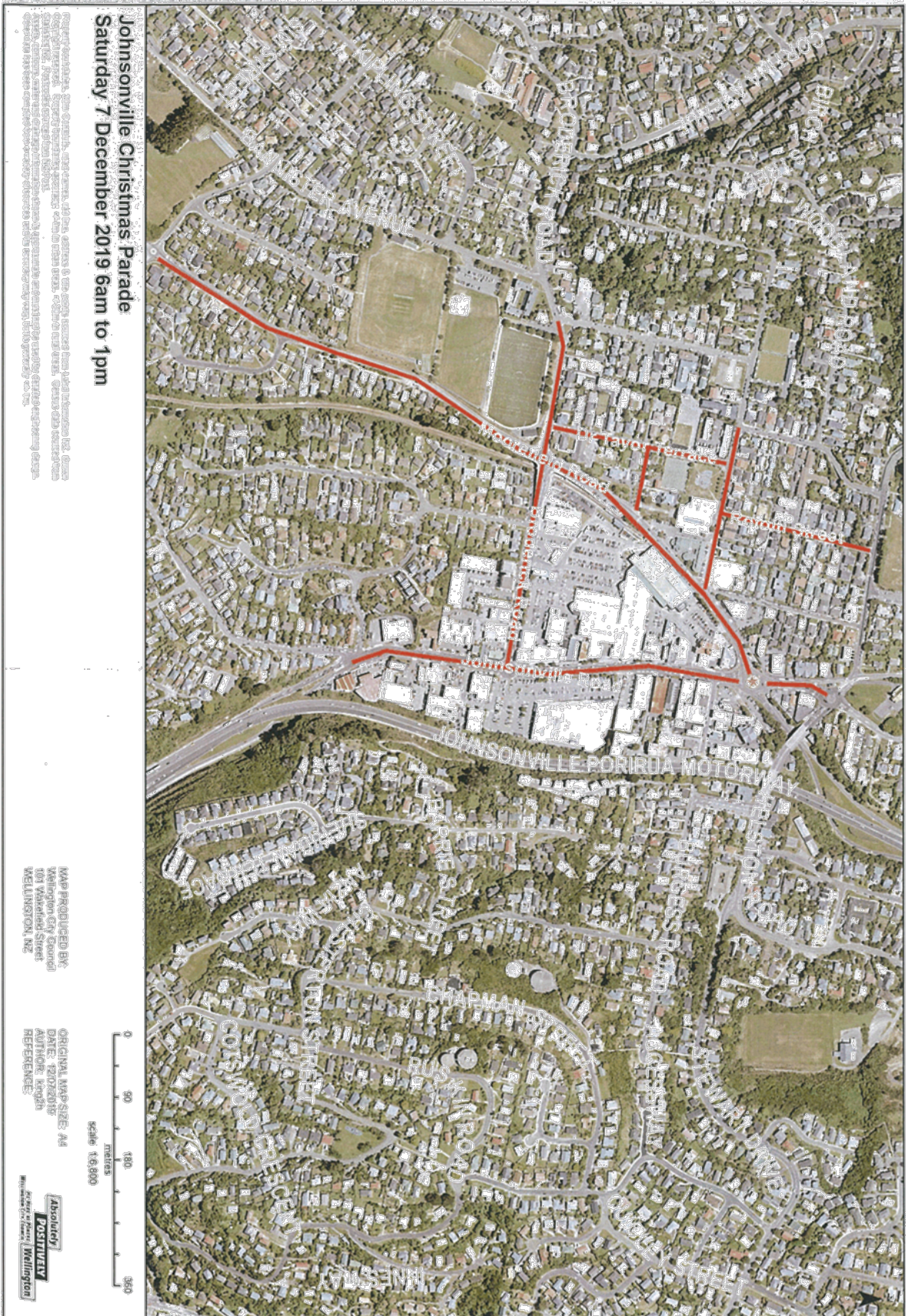
Kilbirnie Crescent/Hamilton Road/Wellington Road intersection to the Evans Bay Parade/Cobham Drive/Wellington Road intersection, road closure from 7.15am - 12.30pm (northbound) 7.15am - 11.30am (southbound)

Any person objecting to a proposed road closure must Contact the City Council in writing before 4pm, Friday 5 July 2019. Please send correspondence to Maria Taumaa at mailing address below, by fax 801 3009 or by email maria.taumaa@wcc.govt.nz

Wellington City Council
PO Box 2199, Wellington 6140
Wellington.govt.nz

Absolutely Positively
Wellington City Council
Me Heke Ki Pōneke

Saturday, June 22, 2019 The Dominion Post C15



REGULATORY PROCESSES COMMITTEE

Absolutely Positively
Wellington City Council
Me Heke Ki Pōneke

PROPOSED TEMPORARY ROAD CLOSURE – IMPACT REPORT

WELLINGTON CHINESE NEW YEAR PARADE SUNDAY 2 FEBRUARY 2020

1. Description of Event

The Chinese New Year Festival has been run annually since 2002. The Festival is expected to attract an audience of over 20,000 people. The street parade is a major part of the celebrations and begins at Tennyson Street and finishes at the Taranaki Street Wharf. Organised by the Asian Events Trust, the organisers do not require a closure for the street parade itself, but do require a safe assembly area for the performers and floats.

The proposed road closures are: 9am to 2.00pm Sunday 2 February 2020.

- Tennyson Street (between Tory Street and Cambridge Terrace)
- The Parade is Tennyson Street to Cambridge Terrace, to Courtenay Place, to Taranaki Street, to Taranaki Street Wharf.

The parade is to be carried out on the open road under a temporary traffic management plan - the details of which will be approved prior to the event.

Road closure notification signs will be placed at each end of the assembly area at least one week prior to the event. Residents and local businesses will receive a letter drop advising them of the road closures and the parking restrictions. The road closures and the street parade are to be traffic managed by a qualified traffic management company. Residents and business owners will have access and emergency services will have immediate access to the area if required.

2. Events Directorate Support

The Chinese New Year celebrations are a significant cultural festival in the city and the parade is now an annual event. This event is supported by Council's City Events Team.

3. Proposal Notice and Consultation

The public notice advising that the Council is proposing to consider this closure was published in the following:

- Dominion Post Saturday on 22 June 2019
- Have your Say 26 June 2019
- Facebook 26 June 2019
- Twitter, 26 June 2019
- Neighbourly 26 June 2019

The New Zealand Police and the Ministry of Transport have also been consulted with.

4. Objections

There have been NO objections to this closure request.

5. Traffic Impact Assessment**Prior Closures**

None of the proposed closures for this event will result in a road being closed for an aggregate of more than 31 days in any year.

Traffic Impact

In the opinion of Jacqui Austin, Team Leader Street Activities and Audit Coordination, acting as the Council's Traffic Engineer, the proposed closure, if implemented according to an approved traffic management plan, is not likely to impede traffic unreasonably subject to the conditions listed below. However, the Council reserves the right to modify this opinion at any time. If, in the opinion of the Council, the closure may or does impede traffic unreasonably, any approval granted by the Regulatory Processes Committee may be revoked and the event organiser may be required to open the road at the direction of a suitably qualified Council officer in charge of traffic.

Conditions:

- The road closures will be in place from 9am to 2.00pm
- The event organiser is to notify the public via, letter drop, advanced signage and media releases.
- The event organiser is to obtain Council approval on the details of traffic management plan 10 working days prior to the event.
- The event organiser is responsible for safety (pedestrian and traffic) within the closed area.
- The event organiser is to provide marshals at all road closures ends to ensure that public safety (interaction of traffic and spectators) is not compromised.
- The event organiser is to provide marshalled vehicle access to all properties affected by the closure for the parade assembly.
- Information signs must be installed 10 working days before event.
- The event organiser is to ensure emergency services (Police, Fire and Ambulance Services) have been consulted with and the Traffic Management Plan includes all of their specific requirements.
- The event organiser is to ensure that the affected property owners along the road closures have been consulted.
- The event organiser must provide Council with an Event Hazard/Risk management plan 10 working days prior to the event that describes in full how the event organiser will manage all Health and Safety risks associated with the event.
- The event organiser must organise a debrief session as close as possible after the event.

Signed 
Jacqui Austin
Team Leader Street Activities and Audit Coordination

6. Attachments

- Map of proposed closure
- Copy of proposal notice from the newspaper

Prepared By:
Maria Taumaa
Street Activities Coordinator



Proposal to Close Roads

The Regulatory Processes Committee will meet on Wednesday 14 August 2019 to consider the following temporary road closures for events.

Cuba Night Market

Only Saturdays from October 5 2019 to Saturday 31 October 2020

Road Closures 2pm to 11.30pm

Cuba Street (from Manners Street to Wakefield Street)

Manners Street (Taranaki Street to Cuba Street)

Bus Lane is open but closed to other vehicles

Kilbirnie Santa Parade

Sunday 1 December 2019 6am to 1pm

Road Closures

Bay Road (between Rongotai Road and Coutts Street)

Rolling Road Closures for Parade 10.30am to 11.00am

Mahora Street, Rongotai Road, Bay Road, Coutts Street

Johnsonville Christmas Parade

Saturday 7 December 2019 6.00am to 2.00pm

Wanaka Street (6am to 1.30pm)

Dr Taylor Terrace (6am to 1.30pm)

Moorefield Road (between Haumia Street and Johnsonville Road roundabouts - 10.45am to 12.00pm)

Rotoiti Street (closed to through traffic - 11am to 12.30pm)

Broderick Road (Phillip Street to Johnsonville Road 11am to 12.30pm)

Johnsonville Road (from Fraser Avenue intersection to Moorefield Road roundabout - 11am to 12.30pm)

Frankmoore Avenue (between Earp Street and Moorefield Road - 11am to 12.30pm)

No Parking 7am to 1pm - Bannister Avenue, Broderick Road, (Bannister Avenue to Phillip Street) Phillip Street, Frankmoore Avenue (Phillip Street to Earp Street) Earp Street

Detour - Johnsonville Road, Fraser Avenue, Haumia Street, Bannister Avenue, Broderick Road, Phillip Street, Frankmoore Avenue, Earp Street

Detour Route - Johnsonville Road, Fraser Avenue, Haumia Street, Bannister Avenue, Broderick Road, Phillip Street, Frankmoore Avenue, Earp Street, Ironside Road, Middleton Road and State Highway 1

Khandallah Fair

Sunday 9 December 2019 6.00am to 6.00pm

Road Closures

Ganges Road (from Agra Crescent to Delka Street)

Capital City Triathlon

Sunday 22nd December 2019 6am to 12pm

Road Closures

Massey Road (between Scorching Bay and Northern entrance to Shelly Bay)

Chinese New Year Parade

Sunday 2 Feb 2020 9am to 2pm

Road Closures

Tennyson Street (between Cambridge Terrace and Tory Street)

Rolling Road Closures for Parade 2.00pm to 3pm

Tennyson Street, Cambridge Terrace, Courtenay Place, Taranaki Street to Taranaki Street wharf

Wellington Round the Bays

Sunday 16 February 2020 6.30am to 1.00pm

Customhouse Quay (Southbound lanes, from Whitmore to Jervois Quay) from 6.30am to 11.00am

Jervois Quay (South bound lanes from Customhouse Quay to Cable Street) from 6.30am to 11.00am

Cable Street (between Jervois Quay and Oriental Parade - with exception of the right hand lane which will open from Chaffers Street to Kent Terrace) from 7.00am to 11.00am
Oriental Parade (all of Oriental Parade from 7.15am to 11.00am)

Evans Bay Parade (between Cobham Drive and Kilbirnie Crescent) from 7.15am to 12noon

Wellington Road (one way east between Crawford Road and Ruahine Street) from 7.15am to 12.00pm

Shelly Bay Road (all of Shelly Bay Road) from 7.30am to 12noon

Massey Road (between Shelly Bay Road and approximately Point Gordon) from 7.30am to 12noon.

All arterial roads joining Evans Bay Parade closed 7.15am to 12noon

Hataitai - Taurima Street and Goa Street - No entry into Hataitai from 7.15am to 11.30am. Traffic can exit from Hataitai

Kilbirnie Crescent/Hamilton Road/Wellington Road intersection to the Evans Bay Parade/Cobham Drive/Wellington Road intersection, road closure from 7.15am - 12.30pm (northbound) 7.15am - 11.30am (southbound)

Any person objecting to a proposed road closure must contact the City Council in writing before 4pm, Friday 5 July 2019. Please send correspondence to Maria Taumaa at mailing address below, by fax 801 3009 or by email

maria.taumaa@wcc.govt.nz

Wellington City Council
PO Box 2199, Wellington 6140
Wellington.govt.nz

Absolutely Positively
Wellington City Council
Me Heke Ki Pōneke

Saturday, June 22, 2019 The Dominion Post C15



Regulatory Processes Committee

PROPOSED TEMPORARY ROAD CLOSURE – IMPACT REPORT

WELLINGTON ROUND THE BAYS SUNDAY 16 FEBRUARY 2020 6.30am to 1.00pm

1. Description of Event

Sport Wellington has applied to hold the annual Wellington Round the Bays Fun Run and Half Marathon. The proposed event is the same as the 2019 event - starting at Frank Kitts Park and finishing at Kilbirnie Park. It also includes, for the eighth time, a half-marathon event to Scorching Bay, which then returns to finish in Kilbirnie Park. The whole event is strongly supported by in excess of 10,000 people each year, with a broad cross section of the community running and walking the course.

The proposed road closures for: Sunday 16 February 2020 6.30am to 1.00pm

- **Customhouse Quay** (Southbound lanes, from Whitmore to Jervois Quay) from 6.30am and 11.00am.
- **Jervois Quay** (Southbound lanes from Customhouse Quay to Cable Street) from 6.30am and 11.00am. (Includes at point of entry of ALL side roads.)
- **Cable Street** (between Jervois Quay and Oriental Parade – with the exception of the right hand lane which will be open from Chaffers Street to Kent Terrace) from 7.00am to 11.00am.
- The Right hand lane is to remain open allowing traffic from Chaffers New World to turn Right into Kent Terrace.
- **Oriental Parade** (all of Oriental Parade) from 7.15am to 11.00am.
- **Oriental Parade and all joining roads** (Herd St, Freyberg Pool Carpark, Oriental Terrace, Hay Street and Grass Terrace) Closed to Carlton Gore Road 7.15am to 11.00am
- **Evans Bay Parade** (Between Oriental Parade and Cobham Drive) from 7.15 am to 12 noon.
- **Evans Bay Parade** (Between Cobham Drive and Kilbirnie Crescent) from 7.15am to 1.00pm.
- **Wellington Road** (one way east between Crawford Road and Ruahine Street) from 7.15am to 12.00pm
- **Shelly Bay Road** (All of Shelly Bay Road) from 7.30am to 12 noon.
- **Massey Road** (between Shelly Bay Road and approximately Point Gordon) from 7.30am to 12noon
- **Kilbirnie Crescent and Hamilton Road and Wellington Road intersection to Evans Bay Parade** northbound lane closure from 7.15am to 12.30pm, Southbound lane closure 7.15am to 11.30pm
- **Cobham Drive and Wellington Road intersection.** From this intersection to Troy street roundabout. Full closure from 7.15am till 11.30am .This stretch of SH1 will open as

soon as it is safe and practical to do so, with the aim to have it open before the stated time.

- Hataitai – Taurima St and Goa St. No entry into Hataitai from 7.15am till 11.30am. Traffic can exit from Hataitai.
- Wellington Road, East lane closed (making Wellington Road one-way east between Crawford Road roundabout and Ruahine Street), from 7.15am to 12.00 noon.
- Shelly Bay Road, closed between Miramar Ave and Massey road – detour route in place, from 7.30am to 12 noon
- Massey Road Closed (Between Shelly Bay Road and approximately Point Gordon) from 7.30am to 12 noon

In addition, State Highway 1, Cobham Drive from the Wellington Road and Hamilton Road intersection to Troy Street roundabout will be closed from 7.15am to 11.30am. Arterial roads adjoining Oriental Parade and Evans Bay Parade will be affected by these closures, as will intersections adjoining the State Highway along Ruahine Street at Taurima Street and Goa Street. Alternative entry routes to Hataitai will be provided at the Hamilton and Wellington Road intersection, the Wellington Road and Moxham Avenue intersection and via Roseneath and Mt Victoria. Traffic will still be able to exit Hataitai. The street closures affecting the State Highway will require separate approval from NZTA. As in previous years, the closures will remain in place for the minimum duration, with the roads being opened at the earliest, and safest opportunity.

There will be areas designated as "No Stopping" to assist with the finish line set-up and the diverted traffic flow around Kilbirnie Park and the general Kilbirnie area. Notification signs will be placed at points along the proposed closures at least one week prior to the event advising of the road closures and the parking restrictions. Residents and local businesses will also receive a letter drop advising them of the road closures and parking restrictions. The event is to be traffic managed by a qualified traffic management company and emergency services will have immediate access to the area if required.

2. Events (Business Development) Support

This is an annual event organised by Sport Wellington and is supported by the Events Business Unit.

3. Proposal Notice and Consultation

The public notice advertising that the Council is proposing to consider this closure was published in the following:

- Dominion Post on Saturday 22nd June 2019
- Facebook 26 June 2019
- Twitter 26 June 2019
- Neighbourly 26 June 2019
- Oriental Bay Residents Association Face to Face
- Letter drop through NZ Post to over 10,000 residents

The New Zealand Police and the Ministry of Transport have also been consulted with.

4. Objections

There have been No Objections to this road closure request.

5. Traffic Impact Assessment

Prior Closures

None of the proposed closures for this event will result in a road being closed for an aggregate of more than 31 days in any year.

Traffic Impact

In the opinion of Jacqui Austin, Team leader Street Activities and Audit Coordination, acting as the Council's Traffic Engineer, the proposed closure, if implemented according to the plans provided, will impede traffic flows on several major routes. The proposed conditions below will go some way to mitigate the expected traffic congestion during the road closures. The expected congestion during the road closures is considered acceptable to facilitate a public event and ensure the safety of the general public. An approved traffic management plan is required and will attempt to minimise disruption. Further conditions listed below will also be required to be adhered to, to assist in managing the event.

However, the Council reserves the right to modify this opinion at any time. If, in the opinion of the Council, the closure may or does impede traffic unreasonably, any approval granted by the Regulatory Processes Committee may be revoked and the event organiser may be required to open the road at the direction of a suitably qualified Council officer in charge of traffic.

Conditions:

- The event organiser is to publicly notify the event via letter drop, newspaper advertisement, advanced signage and media releases.
- The event organiser is to ensure that the emergency services (Police, Fire and Ambulance Services) have been consulted with and that the Traffic Management Plan includes all of their specific requirements.
- The event organiser is to ensure that the affected property owners and businesses along the road closures are consulted with and access options are arranged for affected parties.
- The event organiser is to provide marshals at all road closure ends to ensure that public safety (interaction of traffic and spectators) is not compromised.
- The event organiser is to work with the public transport operators to provide alternative public transport route and bus stops.
- Detour routes are to be provided with adequate signage during the road closure period.
- The event organiser is to provide details of the Traffic Management Plan to Council for approval prior to the event.
- The event organiser is to provide further details to the Wellington City Council with a separate detailed Traffic Management Plan for the diverted State Highway traffic onto City Council managed streets in particular Kilbirnie Crescent, Rongotai Road and Troy Street.
- The management of the diverted traffic onto City Council streets will be controlled by Wellington City Council rather than the New Zealand Transport Agency.

- The event organiser is to provide Variable Message Signs on major routes to advise driver of the road closures, in particular routes between the CBD and the Airport and the Regional Hospital.
- The event organiser is to ensure safe and reasonable access for affected parties and have regular updates and contact with on-site marshals and City Council representatives.
- The event organiser is to install information signs 10 working days before the event starts.
The event organiser is to provide Council with an Event Hazard and Risk management plan 10 working days prior to the event that describes in full how the event organiser will manage all the Health & Safety risks associated with the event.

Signed 
Jacqui Austin
Team Leader, Street Activities and Audit Coordination

6. Attachments

- Map of proposed closure
- Copy of proposal notice from the newspaper

Prepared By: 
Maria Taumaa
Street Activities Coordinator

Proposal to Close Roads

The Regulatory Processes Committee will meet on Wednesday 14 August 2019 to consider the following temporary road closures for events.

Cuba Night Market

Only Saturdays from October 5 2019 to Saturday 31 October 2020

Road Closures 2pm to 11.30pm

Cuba Street (from Manners Street to Wakefield Street)
Manners Street (Taranaki Street to Cuba Street)
Bus Lane is open but closed to other vehicles

Kilbirnie Santa Parade

Sunday 1 December 2019 6am to 1pm

Road Closures

Bay Road (between Rongotai Road and Coutts Street)

Rolling Road Closures for Parade 10.30am to 11.00am

Mahora Street, Rongotai Road, Bay Road, Coutts Street

Johnsonville Christmas Parade

Saturday 7 December 2019 6.00am to 2.00pm

Wanaka Street (6am to 1.30pm)

Dr Taylor Terrace (6am to 1.30pm)

Moorefield Road (between Haumia Street and Johnsonville Road roundabouts - 10.45am to 12.00pm)

Rotoiti Street (closed to through traffic - 11am to 12.30pm)

Broderick Road (Phillip Street to Johnsonville Road: 11am to 12.30pm)

Johnsonville Road (from Fraser Avenue intersection to Moorefield Road roundabout - 11am to 12.30pm)

Frankmoore Avenue (between Earp Street and Moorefield Road - 11am to 12.30pm)

No Parking 7am to 1pm - Bannister Avenue, Broderick Road, (Bannister Avenue to Phillip Street) Phillip Street, Frankmoore Avenue (Phillip Street to Earp Street) Earp Street

Detour - Johnsonville Road, Fraser Avenue, Haumia Street, Bannister Avenue, Broderick Road, Phillip Street, Frankmoore Avenue, Earp Street.

Detour Route - Johnsonville Road, Fraser Avenue, Haumia Street, Bannister Avenue, Broderick Road, Phillip Street, Frankmoore Avenue, Earp Street, Ironside Road, Middleton Road and State Highway 1

Khandallah Fair

Sunday 9 December 2019 6.00am to 6.00pm

Road Closures

Ganges Road (from Agra Crescent to Dekka Street)

Capital City Triathlon

Sunday 22nd December 2019 6am to 12pm

Road Closures

Massey Road (between Scorching Bay and Northern entrance to Shelly Bay)

Chinese New Year Parade

Sunday 2 Feb 2020 9am to 2pm

Road Closures

Tennyson Street (between Cambridge Terrace and Tory Street)

Rolling Road Closures for Parade 2.00pm to 3pm

Tennyson Street, Cambridge Terrace, Courtenay Place, Taranaki Street to Taranaki Street wharf

Wellington Round the Bays

Sunday 16 February 2020 6.30am to 1.00pm

Customhouse Quay (Southbound lanes, from Whitmore to Jervois Quay) from 6.30am to 11.00am

Jervois Quay (South bound lanes from Customhouse Quay to Cable Street) from 6.30am to 11.00am

Cable Street (between Jervois Quay and Oriental Parade - with exception of the right hand lane which will open from Chaffers Street to Kent Terrace) from 7.00am to 11.00am

Oriental Parade (all of Oriental Parade from 7.15am to 11.00am)

Evans Bay Parade (between Cobham Drive and Kilbirnie Crescent) from 7.15am to 12noon

Wellington Road (one way east between Crawford Road and Ruahine Street) from 7.15am to 12.00pm

Shelly Bay Road (all of Shelly Bay Road) from 7.30am to 12noon

Massey Road (between Shelly Bay Road and approximately Point Gordon) from 7.30am to 12noon.

All arterial roads joining Evans Bay Parade closed 7.15am to 12noon

Hataitai - Taurima Street and Goa Street - No entry into Hataitai from 7.15am to 11.30am. Traffic can exit from Hataitai

Kilbirnie Crescent/Hamilton Road/Wellington Road intersection to the Evans Bay Parade/Cobham Drive/

Wellington Road intersection, road closure from 7.15am - 12.30pm (northbound) 7.15am - 11.30am (southbound)

Any person objecting to a proposed road closure must contact the City Council in writing before 4pm, Friday 5 July 2019. Please send correspondence to Maria Taumaa at mailing address below, by fax 801 3009 or by email maria.taumaa@wcc.govt.nz

Wellington City Council
PO Box 2199, Wellington 6140
Wellington.govt.nz

Absolutely Positively
Wellington City Council
Me Heke Ki Pōneke

Saturday, June 22, 2019 The Dominion Post C15

