

---

## PROPOSED TEMPORARY ROAD CLOSURE – IMPACT REPORT

### *THE HOBBIT (AN UNEXPECTED JOURNEY) – RED CARPET PREMIERE TUESDAY 27 NOVEMBER TO THURSDAY 29 NOVEMBER 2012*

---

#### 1. Description of Event

On Wednesday 28 November 2012, the world premiere screening of **The Hobbit: An Unexpected Journey** is planned. Wellington has established a track record of holding stunning world-class red carpet premieres and this is an opportunity for Wellington to show that we are ‘the Coolest little Capital’ in the world. The premiere will be covered by press from around the world.

Stars and VIPs will walk more than 500 metres of red carpet from Reading Cinema to The Embassy Theatre, both of which will be screening the film for invited guests on premiere night

The red carpet walk is scheduled to start at 5:00pm, with the movie screening at 7:00pm.

An event of this nature will generate high foot traffic and crowd numbers around the red carpet and in the Courtenay Place precinct. It is recommended that road closures for vehicles need to be in place to provide a safe area to hold the event and to provide safety for spectators.

It is therefore proposed to close, to vehicle traffic from 9:00pm Tuesday 27 November until 5:30am Thursday 29 November the following streets;

- **Courtenay Place** – Cambridge Terrace to Taranaki Street
- **Kent Terrace** – Oriental Parade to Elizabeth Street
- **Cambridge Terrace** – Tennyson Street to Wakefield Street
- **Majoribanks Street** – Roxburgh Street to Kent Terrace
- **Edge Hill** – local access only
- **Alpha Street** – local access only
- **Blair Street** – local access only
- **Allen Street** – local access only
- **Tory Street** – Tennyson Street to Wakefield Street
- **Forresters Lane** – local access only
- **Holland Street** – local access only

There will be a delivery opportunity for affected local retailers and business between 7:00am to 9:00am on Wednesday morning. Access will be via Cambridge Terrace, and exiting through Courtenay Place onto Taranaki Street. Deliveries to this area will not be possible at other times during the closure. There will be extensive parking restrictions on the above and some surrounding streets during the closure times.

Public transport operators have been consulted on the proposed closures and they are providing temporary bus stops and extensive public transport detour routes. Mobility Parking and Taxi Stands will also be re-located. The event is to be traffic managed by a qualified traffic management company and emergency services will have immediate access to the area at all times if required.

Local businesses and residents have received an initial letter drop advising them of the event and the proposed road closures. Road closure notification boards will be put in place two weeks prior if the road closures are approved and the closures will be advertised in the Our Wellington Page of the Dominion Post in the week preceding the event. Extensive media advertising is planned to publicise the event, the closures, expected congestion and parking restrictions.

## **2. City Events Support**

The City Events Team will be involved in the organisation of this event.

## **3. Proposal Notice and Consultation**

The public notice that the Council is proposing to consider this closure was published in the following newspaper:

- Dominion Post Saturday 15 September 2012

The New Zealand Police and the Ministry of Transport have also been consulted with.

## **4. Objections**

There have been NO objections to this closure request.

## **5. Traffic Impact Assessment**

### **Prior Closures**

None of the proposed closures for this event will result in a road being closed for an aggregate of more than 31 days in any year.

### **Traffic Impact**

In the opinion of Soon Teck Kong, Manager Transport Network, acting as the Council's Traffic Engineer, the proposed closure, if implemented according to the plans provided, is likely to impede traffic but will be partially mitigated subject to the conditions listed below. However, the Council reserves the right to modify this opinion at any time. If, in the opinion of the Council, the closure does impede traffic unreasonably, any approval granted by the Temporary Road Closures Subcommittee may be revoked and the event organiser may be required to open the road at the direction of a suitably qualified Council officer in charge of traffic.

Conditions:

- The road closures will start at 9pm on Tuesday 27 November, and finish at 5.30am on Thursday 29 November 2012.

- The event organiser will publicise the event via media releases, letter drops and advanced signage to notify the public of the road closures.
- The event organiser is responsible for the ongoing maintenance of the temporary traffic management plan during the road closures.
- The event organiser is responsible for maintaining public safety within the road closure area.
- The event organiser is to ensure that the emergency services (Police, Fire and Ambulance Services) have been consulted with and that the Traffic Management Plan includes all of their specific requirements.
- The event organiser is to ensure that the affected property owners and businesses along the road closure are consulted with.
- The event organiser is to provide marshals at all road closure ends to ensure that public safety (interaction of traffic and spectators) is not compromised.
- Detour routes are to be provided and clearly signed during the road closure period.
- The event organiser is to work with the public transport operators to provide alternative public transport routes and bus stops.
- The event organiser is to provide further details of the Traffic Management Plan to Council for approval prior to the event.
- The event organiser is to provide Variable Message Signs at major routes to advise drivers of the road closures, in particular routes from the north to the Airport and the Regional Hospital.
- Temporary or extended bus stops are to be provided on Wakefield and Taranaki Streets, with Temporary Taxi Stands to be placed on the same streets.
- The event organiser will liaise with the Councils Traffic Signals team to action required signal changes throughout the event.

Signed .....



Soon Teck Kong  
Manager - Transport Network

## Attachments

- Map of proposed closure
- Copy of proposal notice from the newspaper

Prepared By: .....



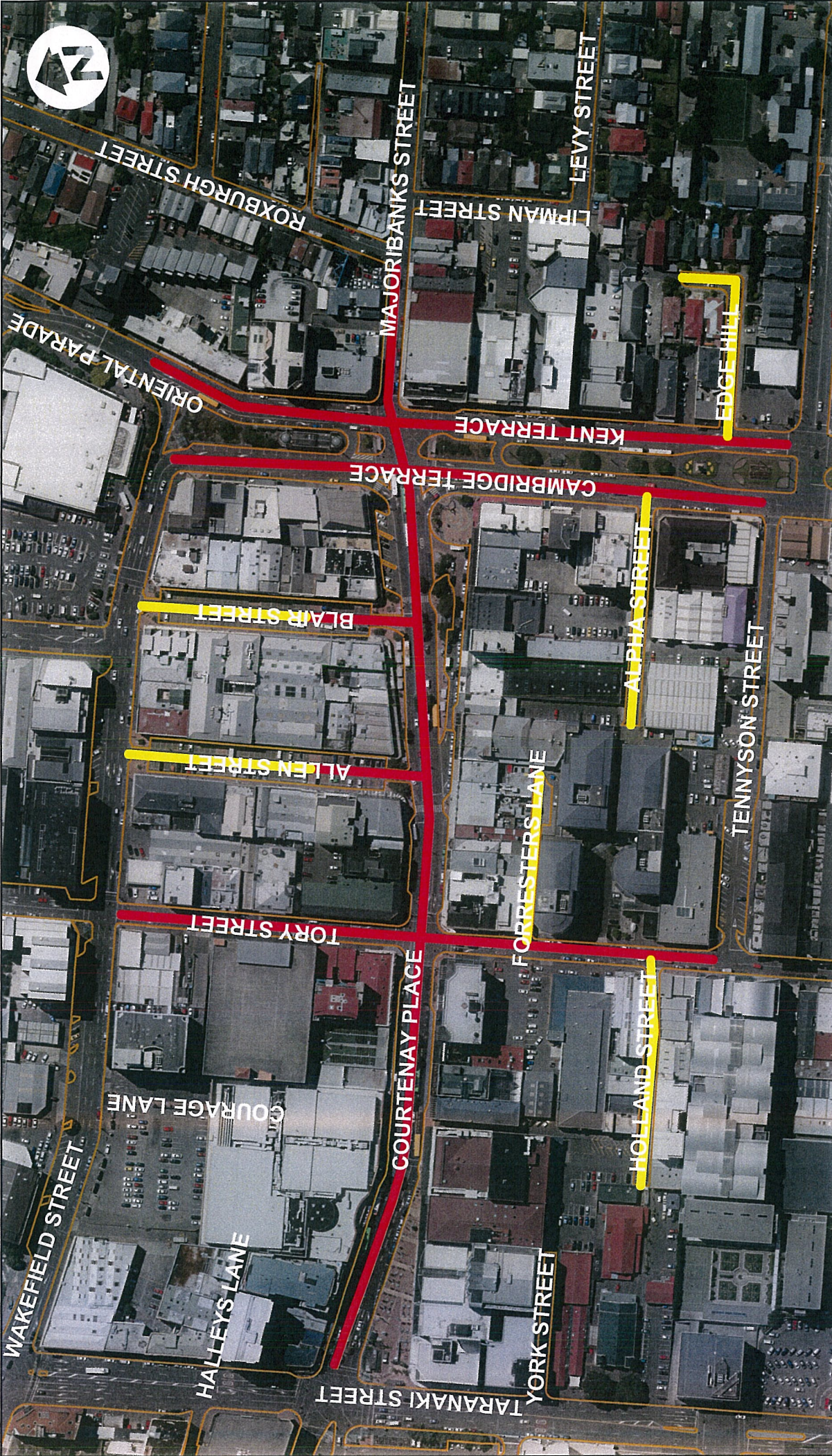
Charles Agate  
Street Activities Coordinator

Endorsed By: .....



Andy Scotland  
General Manager – Strategic Events





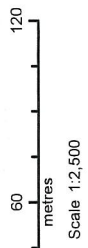
# The Hobbit (An Unexpected Journey) - Red Carpet Premiere

## Temporary Road Closures

9pm Tuesday 27 to 5.30am Thursday 29 November 2012

Property boundaries, 20m contours, road names, rail lines, address & title points sourced from Land Information NZ Crown Copyright reserved. Property boundaries accuracy: +/-1m in urban areas, +/-50m in rural areas. Census data sourced from Statistics NZ. Postcodes sourced from NZ Post. Easements, contours, water and drainage information shown is approximate and must not be used for detailed engineering design. Other data has been compiled from a variety of sources and its accuracy may vary. All is generally +/- 1m.

- Closure
- Local Access



MAP PRODUCED BY:  
Wellington City Council  
101 Wakefield Street  
WELLINGTON, NZ

ORIGINAL MAP SIZE: A4  
DATE: 15/10/2012  
AUTHOR: agate2c  
REFERENCE:

**Absolutely**  
**POSITIVELY**  
We live by Power. Wellington City Council



**PUBLIC NOTICES**

Advertisement concerning application by Individual Salesperson's Licence Section 39, Real Estate Agents Act 2008 Real Estate Agents Authority

Ilde Jan Mebus, 8 Slingway Ave, Melrose, Wellington, amplying to the Registrar of the Real Estate Agents Authority for a person's licence under section 39 of the Real Estate Agents Act 2008.

LING, Nigel. - Looking for whereabouts of Nigel Barry Jen Culling who was married to Maria Maria Moody on the 26th September 1992.



**ANNUAL GENERAL MEETING**

SATURDAY, OCTOBER 6, 2012 Time: 10.00am  
RAVELDGE PALMERSTON NORTH  
175 CUBA STREET PALMERSTON NORTH  
Preliminary Agenda  
Mihikaiti / Karakia  
Apologies  
Minutes of 2011 AGM  
Chairman's Report  
Financial Report  
Appointment of Auditor  
Appointment of Managing Trustees  
General Business  
Karakia Whakamutunga  
Three year terms of Managing Trustees  
Matthew Love-Parata, Jeanie Hughes, Liz Melish and Anne Beyell  
This notice is published in section 35 of the Trustee Act 1955 by the Administrators, D B Johnson and D K Sarginson.

**PUBLIC NOTICES**



**North Island Mussel Processors Limited (In Receivership)**

**Mussel toll processing business**

The Receivers of North Island Mussel Processors Limited (In Receivership) ("NIMPL") are calling for expressions of interest in the business and assets of the company.

NIMPL operates a specialised mussel processing facility incorporating automated mussel opening machines and is situated on freehold premises in Greerton, Tauranga

The closing date for receipt of expressions of interest is 5pm Friday 21 September 2012. The Receivers reserve the right to accept an offer for the assets prior to 21 September 2012.

Enquiries and requests for a copy of the information memorandum should be made to the Receivers. Enquiries should be directed to:

**Kiran Patel**  
Tel: +64 (9) 926 5118  
E-mail: kpatel@mcnp.co.nz  
McGrathNicol, PO Box 91644, Victoria Street West, Auckland 1142

**PUBLIC NOTICES**



**North Island Mussel Processors Limited (In Receivership)**

**Mussel toll processing business**

The Receivers of North Island Mussel Processors Limited (In Receivership) ("NIMPL") are calling for expressions of interest in the business and assets of the company.

NIMPL operates a specialised mussel processing facility incorporating automated mussel opening machines and is situated on freehold premises in Greerton, Tauranga

The closing date for receipt of expressions of interest is 5pm Friday 21 September 2012. The Receivers reserve the right to accept an offer for the assets prior to 21 September 2012.

Enquiries and requests for a copy of the information memorandum should be made to the Receivers. Enquiries should be directed to:

**Kiran Patel**  
Tel: +64 (9) 926 5118  
E-mail: kpatel@mcnp.co.nz  
McGrathNicol, PO Box 91644, Victoria Street West, Auckland 1142

**PUBLIC NOTICES**



**North Island Mussel Processors Limited (In Receivership)**

**Mussel toll processing business**

The Receivers of North Island Mussel Processors Limited (In Receivership) ("NIMPL") are calling for expressions of interest in the business and assets of the company.

NIMPL operates a specialised mussel processing facility incorporating automated mussel opening machines and is situated on freehold premises in Greerton, Tauranga

The closing date for receipt of expressions of interest is 5pm Friday 21 September 2012. The Receivers reserve the right to accept an offer for the assets prior to 21 September 2012.

Enquiries and requests for a copy of the information memorandum should be made to the Receivers. Enquiries should be directed to:

**Kiran Patel**  
Tel: +64 (9) 926 5118  
E-mail: kpatel@mcnp.co.nz  
McGrathNicol, PO Box 91644, Victoria Street West, Auckland 1142

**PUBLIC NOTICES**

**ANAESTHETIC AWARENESS STUDY**

Have you had an operation under general anaesthesia? Do you remember hearing sounds or conversations or feeling the operation during a time when you were supposed to be asleep?

We are conducting telephone/in-person interviews and taking a saliva DNA sample from people who have suffered awareness. Our aim is to research into possible genetic causes of anaesthetic awareness.

Please call Mrs Gay Mans, Research Nurse, Department of Anaesthesia, Waikato Hospital, on 021 2260085

**PUBLIC NOTICES**

**ANAESTHETIC AWARENESS STUDY**

Have you had an operation under general anaesthesia? Do you remember hearing sounds or conversations or feeling the operation during a time when you were supposed to be asleep?

We are conducting telephone/in-person interviews and taking a saliva DNA sample from people who have suffered awareness. Our aim is to research into possible genetic causes of anaesthetic awareness.

Please call Mrs Gay Mans, Research Nurse, Department of Anaesthesia, Waikato Hospital, on 021 2260085

**PUBLIC NOTICES**

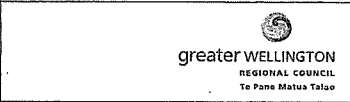
**Drinking water standards compliance**

As part of compliance with the Drinking-water Standards for New Zealand 2005 (revised 2008), the Ministry of Health requires water suppliers to publish the following notice twice a year.

**Ministry of Health - public notice**  
Some plumbing fittings have the potential to allow minute traces of metals to accumulate in water standing in the fittings for several hours. Although the health risk is small, the Ministry of Health recommends that you flush a mugful of water from your drinking-water tap each morning before use to remove any metals that may have dissolved from the plumbing fittings. We are recommending this simple precaution for all households, including those on public and private water supplies.

**Director - General of Health**  
This notice is placed jointly by Greater Wellington Regional Council and the Hutt, Porirua, Upper Hutt and Wellington city councils, in relation to the reticulated water supplies of those cities.

For further information about the health implications of this advice, contact the Drinking Water Assessment Unit of the Wellington Regional Public Health Service, phone: 04 570 9002.



**ICE ENTITY**

claims of Ngāti Toa Ngāti Toa Rangitira settlement redress ballot or on-line.

Members of Ngāti Toa Rangitira settlement redress ballot or on-line.

Rangitira urgently meeting at Puna Ora at 5pm on Tuesday

Time
5.30pm
6.30pm
6.30pm
6.30pm
5.30pm
9.30am to 12.30pm

ad to vote at the hui and voting material

**He Panui**

**Muaupoko Tribal Authority**

Notice is hereby given of the Special General Meeting of Muaupoko Tribal Authority Incorporated Society which will be held at Kohuturoa Marae, Hoki Beach Road in Levin on Sunday 14th October 2012 starting at 10.00am.

**AGENDA**  
1. Karakia  
2. Special Business -

- A vote will be taken to:
  - Amend and ratify the Rules of Muaupoko Tribal Authority Incorporated Society and approve the Authority as the Mandated iwi Organisation for Muaupoko under the Maori Fisheries Act 2004 and Iwi Aquaculture Organisation for Muaupoko Iwi under the Maori Commercial Aquaculture Claims Settlement Act 2004.

**Enquiries Contact:**  
Chris Schroder  
0274 438 689

**Commercial & Industrial Divisions**  
Ph: 04 587 1470 Fax: 04 587 1481  
120 Hutt Park Road, Seaview, Lower Hutt

This sale is GST exclusive - A 5% Buyers Premium will be added to the bid price, then GST added to the total

**energy DIRECT NZ**

THIS IS NOT NOTIFICATION OF A PRICE INCREASE

**Gas Information Disclosure - Hutt Valley, Porirua and Wellington**

Under the terms of the Gas (Information Disclosure) Regulations 1997, Energy Direct New Zealand Limited is required to advise its customers of the cost of the Transmission and Distribution components within their gas accounts.

From 1 October 2012, the Transmission and the Distribution components included within the price our customers on Powerco's Hutt Valley, Porirua and Wellington gas distribution network pay for Gas are as follows: -

**Transmission Component**  
A Throughput Charge of \$0.956 for every Gigajoule (GJ)\* of Gas supplied through the transmission pipelines owned and operated by Vector Limited.

In addition a Capacity Reservation charge of \$1.573 is included in every GJ\* of Gas supplied.

**Distribution Component**  
The Powerco network distribution charges are as follows: -

Customer Group	Fixed Daily Charge	Gas Charge/GJ*	No. of Customers
Capacity Group 4G06	\$0.0000	\$16.4619	188
Capacity Group 4G11	\$0.5001	\$5.9540	569
Capacity Group 4G12	\$0.7765	\$5.8231	8
Capacity Group 4G14	\$5.5315	\$5.6012	4
Capacity Group 4G16	\$7.9882	\$4.9961	3
Capacity Group 4G18	\$11.4142	\$4.8267	2
Capacity Group 5G06	\$0.0000	\$16.0170	68
Capacity Group 5G11	\$0.5001	\$5.5083	509
Capacity Group 5G12	\$0.6888	\$5.2471	9
Capacity Group 5G14	\$4.4926	\$5.1433	5
Capacity Group 5G16	\$7.9882	\$4.1772	3

\* (1 GJ = 277.8 kilowatt-hours)

The above prices, which do not include GST or gas metering costs, apply to all customers supplied with Gas under the terms of our Residential and Non-Residential pricing options on 1 October 2012.

Please note that the provision of this information is required by the Gas (Information Disclosure) Regulations 1997 and is for our customers' information only.

If you have any questions related to the above information then please do not hesitate to call our office on 0800 567 777.

**Notice of Payment into Victims' Claims Trust Account**

TAKE NOTICE that, pursuant to part 2 of the Prisoners' and Victims' Claims Act 2005, compensation awarded to Luke William Cowie is required to be paid to the Secretary of Justice, and the surplus after deductions is to be held in Trust on behalf of Luke William Cowie.

AND THAT on 10 September 2012, \$9,935.00 was paid into the Victims' Claims Trust Account on behalf of Luke William Cowie. This money must be held in the Trust Account to enable any victims of Luke William Cowie to make claims against it.

ANY PERSON that has been a victim of Luke William Cowie, in respect of an offence for which Luke William Cowie was convicted in a Court of New Zealand, is entitled to make a claim against the money held in the Trust Account on behalf of Luke William Cowie. Claims by victims are not limited to the amount available in the Trust Account.

CLAIM FORMS, and information on how to make a claim, may be obtained from:

The Secretary  
Victims' Special Claims Tribunal  
Private Bag 32001  
WELLINGTON 6146  
Ph: 04 462 6660  
Fax: 04 462 6686

ALL CLAIMS must be filed on or before Friday, 15 March 2013.

Buildings, WELLINGTON 6160.



**PROPOSED ROAD CLOSURES THE HOBBIT: AN UNEXPECTED JOURNEY MOVIE PREMIERE**

A meeting of the Regulatory Processes Committee is scheduled for 9.15am, Wednesday 17 October 2012 in the Te Mahanga Room (Committee Room 1), ground floor, Council offices, 101 Wakefield Street, to consider the following proposed temporary road closures associated with the premiere of The Hobbit: An Unexpected Journey.

- 9pm Tuesday 27 November to 5.30am Thursday 29 November 2012
- Kent Terrace - Oriental Parade to Elizabeth Street
- Cambridge Terrace - Tennyson Street to Wakefield Street
- Majoribanks Street - Roxburgh Street to Kent Terrace
- Edge Hill - local access only
- Alpha Street - local access only
- Courtenay Place - Cambridge Terrace to Taranaki Street
- Blair Street - local access only
- Allen Street - local access only
- Tory Street - Tennyson Street to Wakefield Street
- Forrester's Lane - local access only
- Holland Street - local access only

There will be a delivery opportunity for affected local retailers and businesses between 7-9am Wednesday 28 November.

Any person objecting to a proposed road closure must contact Wellington City Council in writing before 5pm Friday 28 September 2012.

Please send correspondence to Charles Agate at the mailing address below, by email to charles.agate@wcc.govt.nz or by fax to 801 3009.

**Wellington City Council, 101 Wakefield Street, PO Box 2199, Wellington 6140 | Wellington.govt.nz**

**Petone Football Supporters Club 2012 Raffle**

- 1st 40372
- 2nd 47549
- 3rd 44706
- 4th 41254
- 5th 46257
- 6th 40255

**TOURS & TRAVEL**

**Brisbane Cars for Hire**

FROM \$25 PER DAY.  
Licensed Airport Operators  
NZ Owned & Operated  
New & Late Models  
NZ TOLL FREE 0800-453-345  
gatewayautorentals  
2000@yahoo.com.au  
Gateway Auto Rentals.

**BRISBANE Bayside Auto Rentals**  
Cars from AUD \$27.50 per day.  
Airport pickup. Free, kms & low standard excess. Kiwi owned.  
Free Call 0800-023-581 or see www.baysideauto.com.au

**REXELLENT RENTALS.**  
BRISBANE, GOLDCOAST.  
Book now. New cars - NZ owned.  
www.rexellent.com.au  
NZ TOLL FREE 0800 601 508

**PETS**

**PLEASE NOTE**  
The Dominion Post does not accept advertising for the sale, purchase or request of banned breeds including:

- Brazilian Fila
- Dogo Argentino
- Japanese Tosa
- Perro de Presa Canario
- American Pit Bull Terrier

**GOLDEN Retriever Pups NZ**  
Registered - Great Companions  
Very Friendly! Ph: 06 345971

**PUPPIES:** Chihuahua \$x's each, Lab X's only \$50 +  
View online at www.levinpet.co.nz Ph: (06) 357-9334