
PROPOSED TEMPORARY ROAD CLOSURE – IMPACT REPORT

SANTA PARADE SUNDAY 9 DECEMBER 2012

1. Description of Event

Wellington City Council Events team and Crackerjack Promotions (with the major sponsor yet to be confirmed) are again organising this year's Santa Parade proposed for Sunday 9 December. The event is the major Christmas parade in Wellington City and has been organised successfully in this format since the Manners Street changeover. The Parade attracts thousands of spectators from the Wellington region and involves many participants and floats.

The proposed road closures are:

From 7am to 4pm (to allow for the formation of parade)

- **Ballance Street** (Lambton Quay to Featherston Street)
- **Stout Street** (Lambton Quay to Whitmore Street)
- **Maginnity Street** (Waring Taylor Street to Ballance Street)

From 10am to 5pm

- **Lambton Quay** (Whitmore Street to Willis Street)
- **Willis Street** (Lambton Quay to Manners Street)
- **Customhouse Quay** (Willis Street to Hunter Street)
- **Willeston Street** (Willis Street to Victoria Street)
- **Mercer Street**
- **Victoria Street** (Harris Street to Dixon Street)
- **Bond Street** (Victoria Street to Willis Street)
- **Lombard Street**
- **Cornhill Street**
- **Wakefield Street** (Mercer Street to Cuba Street/MFC Centre)
- **Cuba Street** (Wakefield Street to Manners Street)
- **Manners Street** (Willis Street to Taranaki Street) – End of parade

The parade starts at the corner of Lambton Quay and Ballance Street and proceeds via Lambton Quay, Willis Street, Mercer Street, Victoria Street and Manners Street to the disembark area on Manners Street just before the Taranaki Street intersection.

There will be no parking on the majority of the above closed roads, especially on the formation area and the parade route itself, from midnight Saturday 8 December through to 5pm Sunday 9 December. Temporary bus stops will be in place on Customhouse Quay (2) and Jervis Quay (2).

Traffic management will be undertaken by Fulton Hogan, as in previous years, in accordance with an approved Traffic Management Plan. Information signage will be erected at least 7 days before the event on the effected streets and there will be extensive public notification via the various media outlets

and by letter drops. Assistance has been sought from the Police to provide points persons at the disembark area at the intersection of Manners St and Taranaki St (an identified traffic hazard area). Pedestrian marshals and fencing at various points will be provided by the organiser and emergency services will have immediate access to the area if required.

2. Events (Business Development) Support

The event attracts tens of thousands of spectators to the inner city and surrounding areas, shops and the waterfront. The event is seen as an important part of the build up to the major retail period in the CBD. It is supported by the Events Business Unit.

3. Proposal Notice and Consultation

The public notice that the Council is proposing to consider this closure was published in the following newspaper:

- Dominion Post Saturday 8 September 2012

The New Zealand Police and the Ministry of Transport have also been consulted with.

4. Objections

There have been NO objections to this closure request.

5. Traffic Impact Assessment

Prior Closures

None of the proposed closures for this event will result in a road being closed for an aggregate of more than 31 days in any year.

Traffic Impact

In the opinion of Soon Teck Kong, Manager Transport Network, acting as the Council's Traffic Engineer, the proposed closure, if implemented according to the plans provided, will minimise the duration of the traffic impacts, mitigate issues of local access and address public safety concerns. However, the Council reserves the right to modify this opinion at any time. If, in the opinion of the Council, the closure may or does impede traffic unreasonably, any approval granted by the Regulatory Processes Committee may be revoked and the event organiser may be required to re-open the road at the direction of a suitably qualified Council officer in charge of traffic.

Conditions:

- The event organiser is to ensure that the event is publicised via media releases and advanced notification signs to inform the public of the road closures.

- The event marshals are to ensure that public safety is not compromised.
- The event organiser is to ensure that the emergency services (Police, Fire and Ambulance Services) have been consulted with and that the Traffic Management Plan includes all of their specific requirements.
- Consultation with the public transport providers is required to ensure adequate alternatives are provided to these essential services.
- The event organiser is responsible for the ongoing maintenance of the temporary traffic management plan during the road closures.

Signed 

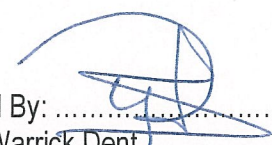
Soon Teck Kong
Manager - Transport Network

6. Attachments

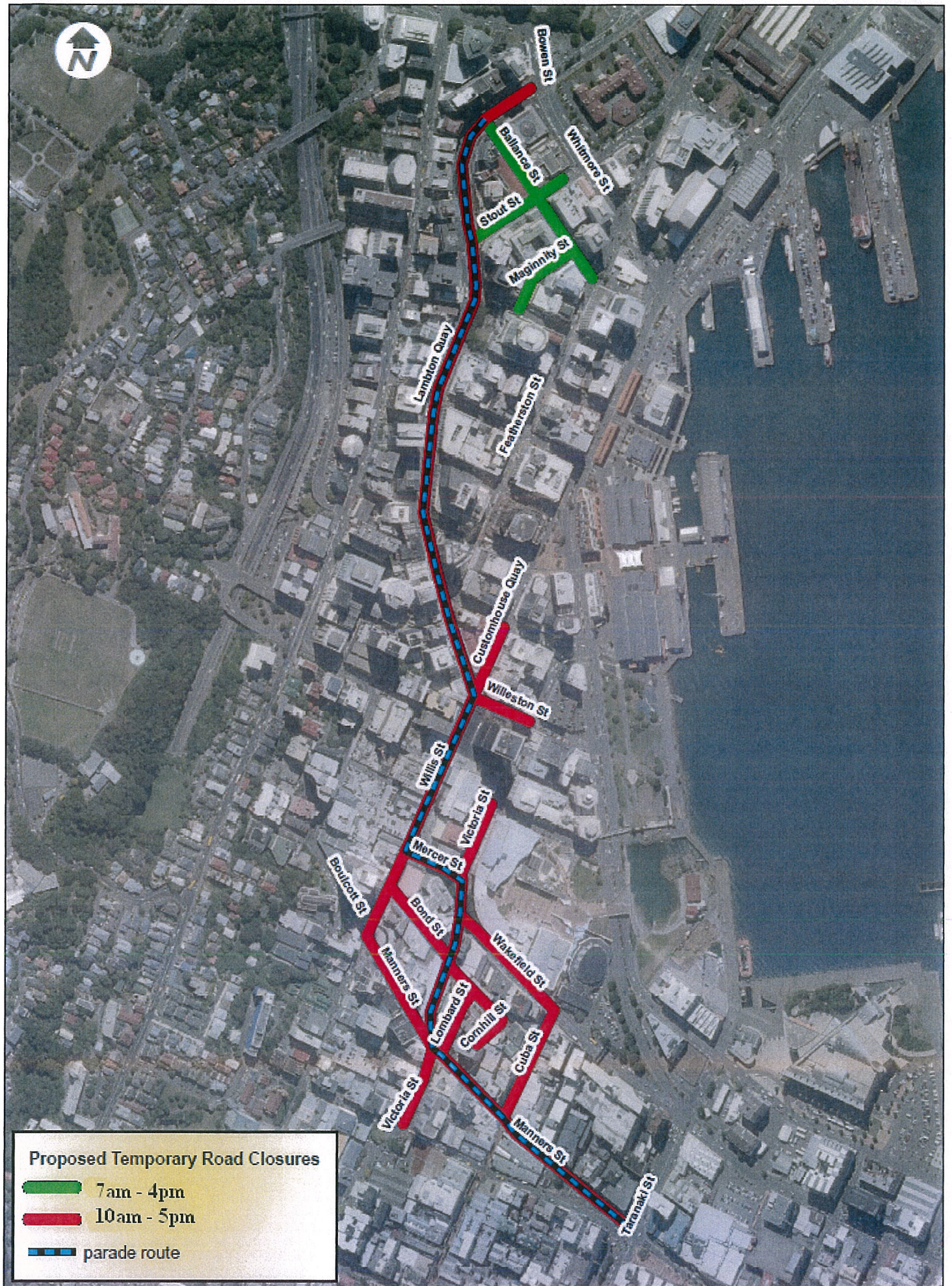
- Map of proposed closure
- Copy of proposal notice from the newspaper

Prepared By: 

Charles Agate
Street Activities Coordinator

Endorsed By: 

Warrick Dent
Manager City Events



Proposed Temporary Road Closures

- 7am - 4pm
- 10am - 5pm
- parade route

**Santa Parade:
Proposed Temporary Road Closures**

Sunday 9 December 2012

Copyright © 2012
Property boundaries
Land Information New
Zealand (LINZ) 2012
Council Copyright reserved
Notwithstanding to other owners. All
Rights Reserved. Total area: 100m²

Other data has been
compiled from a
variety of sources and
its accuracy may vary

Any content displayed
is only a summary
and should not be used for
reference or legal purposes

Source: ©Photography 1, 2012
Page No. 2/33 created by
Wellington City Council

