
PROPOSED TEMPORARY ROAD CLOSURE IMPACT REPORT:

THORNDON FAIR - SUNDAY 4 DECEMBER 2011

1. Description of Event

Thorndon School have organised this popular event with stallholders, shopkeepers, arts and crafts enthusiasts and entertainers for over 25 years. The fair is the major fund raising vehicle for the school and is held each year on the first Sunday in December. This year's fair is proposed for Sunday 4 December 2011. As in previous years, the organisers wish to close **Tinakori Road** between Bowen Street and Harriet Street and **Hill Street** from Tinakori Road to Selwyn Terrace, from 7.30am until 5.30pm.

Approved public information signage will be in place well ahead of the event. The organisers are planning to advertise the Fair via radio and TV media releases, bus posterage, community papers, a web site, bridge banners, posters and signs. Residents and local businesses will receive several letter drops (beginning in late October, then mid November, 1 week out from the event and a car drop the day before) advising them of the event, the parking restrictions involved and, if necessary, actions taken to assist them.

As in previous years, a professional traffic management company will provide the traffic management plan and site supervision. The organising committee will be providing a large number of suitably briefed marshals. Parkwise staff will assist with the parking restrictions. Pedestrian access will not be restricted and emergency services will have immediate access to the area if required.

2. Rugby World Cup and Events Directorate Support

The Rugby World Cup and Events Directorate has no connection with and no objection to this event.

3. Proposal Notice and Consultation

The public notice that the Council was proposing to consider this closure was published in the following newspaper:

- Dominion Post Saturday 9 July 2011

The New Zealand Police and the Ministry of Transport have also been consulted with.

4. Objections

No objections were received in response to the proposal notice.

5. Traffic Impact Assessment

Prior Closures

None of the proposed closures for this event will result in a road being closed for an aggregate of more than 31 days in any year.

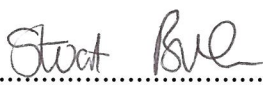
Traffic Impact

In the opinion of Stuart Bullen, Senior Traffic Engineer, acting as the Council's Traffic Engineer, the proposed closure, if implemented according to the plans provided, is not likely to impede traffic unreasonably subject to the conditions stated below. However, the Council reserves the right to modify this opinion at any time. If, in the opinion of the Council, the closure may or does impede traffic unreasonably, any approval granted by the Regulatory Processes Committee may be revoked and the event organiser may be required to re-open the road at the direction of a suitably qualified Council officer in charge of traffic.

Conditions:

- The road closure will start at 7.30am and end at 5.30pm.
- No vehicular traffic will be allowed within the road closure area, except for marshalled stallholders travelling at no more than walking speed (3km/h), to ensure public safety is not compromised.
- The event organiser will publicise the event via media releases, letter drops and advanced signage to notify the public of the road closure.
- The event organiser is responsible for the maintenance of the temporary traffic management plan during the road closure.

Signed:



.....

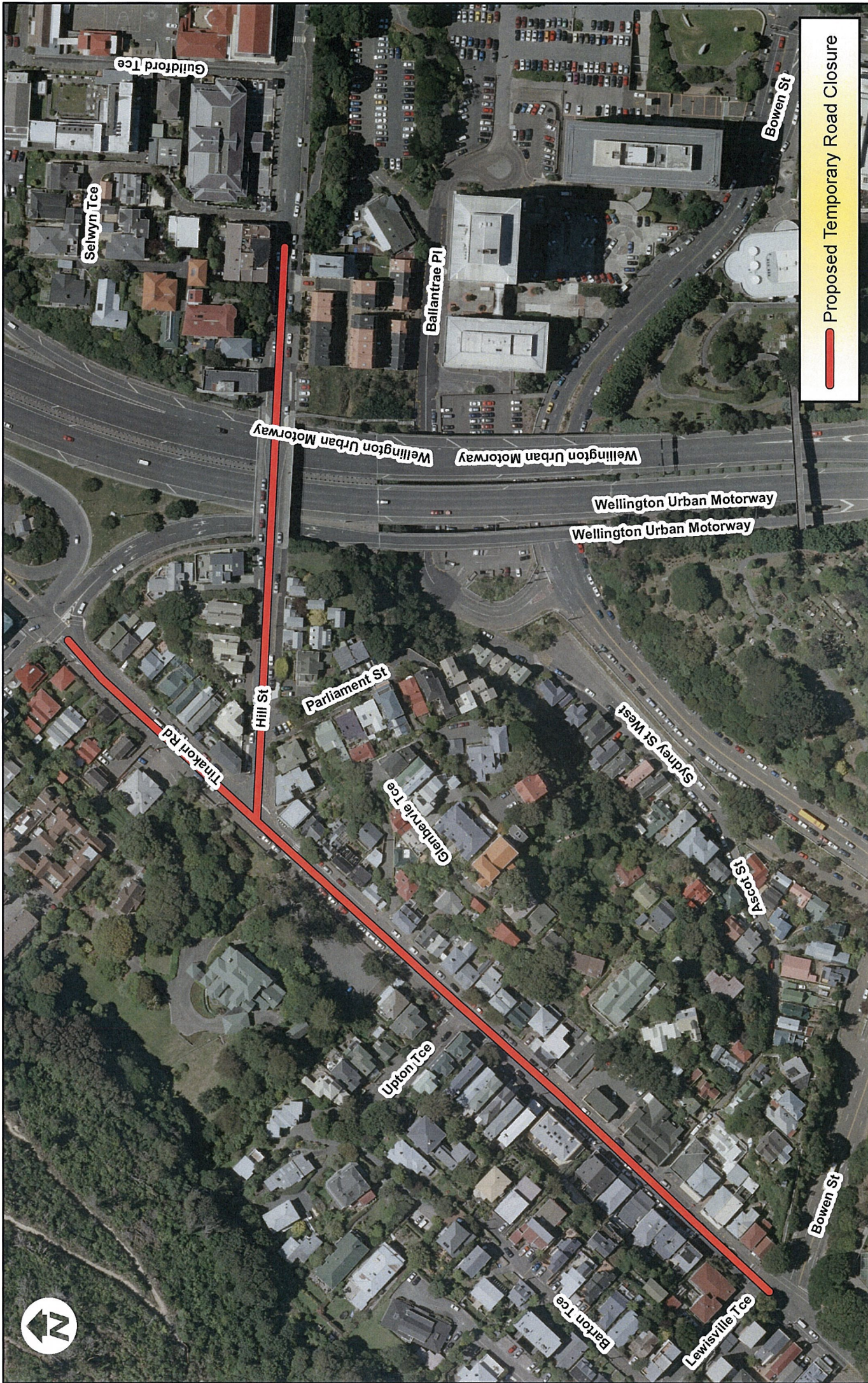
Stuart Bullen
Acting Chief Traffic Engineer

ATTACHMENTS

- Map of proposed closure
- Copy of proposal notice from the newspaper

Prepared By: 
Gail Reeves
Street Activities Coordinator

Endorsed By: 
Andy Scotland
GM Strategic Events



Proposed Temporary Road Closure

Thorndon Fair: Proposed Temporary Road Closure Sunday 4 December 2011

1:2,000

**Absolutely
POSITIVELY**
WE HERE AT PŌKEKE
WELLINGTON CITY COUNCIL

DATA STATEMENT
Property boundaries
Land information NZ
Aerial photography
Crown Copyright reserved
Accuracy in urban areas +/- 1m
Accuracy in rural areas +/- 30m
Topographic data
Aerial photography
WCC Copyright reserved
Accuracy +/- 30m
Other data has been
compiled from a
variety of sources and
its accuracy may vary
Any contours displayed
are for information only
and must not be used for
detailed engineering design
Crown Copyright reserved
© Crown of New Zealand
© Wellington City Council