

---

## **PROPOSED TEMPORARY ROAD CLOSURE IMPACT REPORT:**

### **SANTA PARADE – SUNDAY 13 NOVEMBER 2011 AND POSTPONEMENT DATE SUNDAY 20 NOVEMBER 2011**

---

#### **1. Description of Event**

Wellington City Council Events team and Crackerjack Promotions (with the major sponsor yet to be confirmed) are again organising this year's Santa Parade proposed for Sunday 13 November (postponement date Sunday 20 November). The event is the major Christmas event in Wellington City and has been organised successfully in this format for many years. The Parade attracts thousands of spectators from the Wellington region and involves many participants and floats.

The proposed road closures are:

From 7am to 3pm (to allow for the formation of parade)  
**Ballance Street** (Lambton Quay to Featherston Street)  
**Stout Street** (Lambton Quay to Whitmore Street)  
**Maginnity Street** (Waring Taylor Street to Ballance Street)

From 10am to 5pm  
**Lambton Quay** (Whitmore Street to Willis Street) – Start of parade  
**Willis Street** (Lambton Quay to Manners Street)  
**Customhouse Quay** (Willis Street to Hunter Street)  
**Willeston Street** (Willis Street to Victoria Street)  
**Mercer Street**  
**Victoria Street** (Harris Street to Dixon Street)  
**Bond Street**  
**Lombard Street**  
**Cornhill Street**  
**Wakefield Street** (Mercer Street to Cuba Street/MFC Centre)  
**Cuba Street** (Wakefield Street to Manners Street)  
**Manners Street** (Willis Street to Taranaki Street) – End of parade

The parade starts at the corner of Lambton Quay and Ballance Street and proceeds via Lambton Quay, Willis Street, Mercer Street, Victoria Street and Manners Street to the disembark area on Manners Street just before the Taranaki Street intersection. The route has had to be amended this year because of the changes to the roads around Manners and Cuba streets. The Parade will head south on Victoria Street (previously along Wakefield Street), turn left into Manners Street and travel via the bus lane to the disembark area.

This new route has been considered by stakeholders, including the Police and the Manager of the Transport Network, as the best alternative route and it still incorporates passing the iconic “James Smith’s Corner”.

There will be no parking on the majority of the above closed roads, especially on the formation area and the parade route itself, from midnight Saturday 12 November through to 5pm Sunday 13 November. Temporary bus stops will be in place on Customhouse Quay (2) and Jervois Quay (2).

Traffic management will be undertaken by Fulton Hogan, as in previous years, in accordance with an approved Traffic Management Plan. Information signage will be erected at least 7 days before the event on the effected streets and there will be extensive public notification via the various media outlets and by letter drops. Assistance has been sought from the Police to provide points persons at the disembark area at the intersection of Manners St and Taranaki St (an identified traffic hazard area). Pedestrian marshals and fencing at various points will be provided by the organiser and emergency services will have immediate access to the area if required.

## **2. Rugby World Cup and Events Directorate Support**

The event attracts tens of thousands of spectators to the inner city and surrounding areas, shops and the waterfront. The event is seen as an important part of the build up to the major retail period in the CBD. It is supported by the Rugby World Cup and Events Directorate.

## **3. Proposal Notice and Consultation**

The public notice that the Council was proposing to consider this closure was published in the following newspaper:

- Dominion Post Saturday 9 July 2011

The New Zealand Police, Fire Services, Wellington Free Ambulance and the Ministry of Transport have also been consulted with.

## **4. Objections**

No objections were received in response to the proposal notice.

## **5. Traffic Impact Assessment**

### **Prior Closures**

None of the proposed closures for this event will result in a road being closed for an aggregate of more than 31 days in any year.


## Traffic Impact

In the opinion of Stuart Bullen, Senior Traffic Engineer, acting as the Council's Traffic Engineer, the proposed closure, if implemented according to the plans provided, will minimise the duration of the traffic impacts, mitigate issues of local access and address public safety concerns. However, the Council reserves the right to modify this opinion at any time. If, in the opinion of the Council, the closure may or does impede traffic unreasonably, any approval granted by the Regulatory Processes Committee may be revoked and the event organiser may be required to re-open the road at the direction of a suitably qualified Council officer in charge of traffic.

### Conditions:

- The event organiser is to ensure that the event is publicised via media releases and advanced notification signs to inform the public of the road closures.
- The event marshals are to ensure that public safety is not compromised.
- Consultation with the public transport provider and emergency services is required to ensure adequate alternatives are provided to these essential services.

Signed:

  
.....

Stuart Bullen  
Acting Chief Traffic Engineer


## ATTACHMENTS

- Map of proposed closure
- Copy of proposal notice from the newspaper

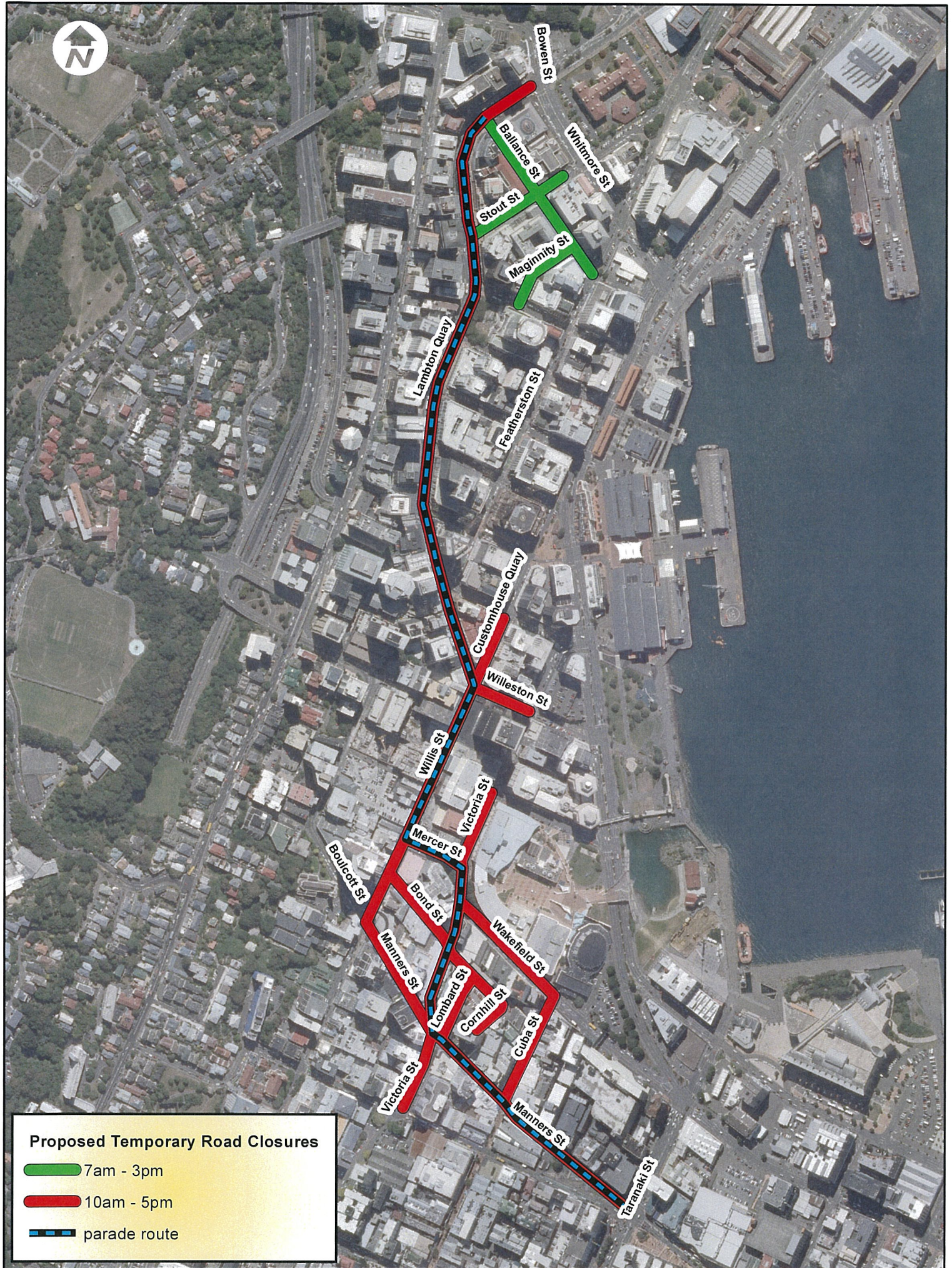
Prepared By:

  
Gail Reeves  
Street Activities Coordinator

Endorsed By:

  
Andy Scotland  
GM Strategic Events





**DATA STATEMENT**

Property boundaries  
Land Information NZ  
Licence: W00055472  
Crown Copyright reserved  
Accuracy in urban areas: +/- 1m  
Accuracy in rural areas: +/- 30m

Other data has been  
compiled from a  
variety of sources and  
its accuracy may vary

Any contours displayed  
are only approximate  
and must not be used for  
detailed engineering design

Colour Orthophotography 1:500  
 flown Mar 2009 owned by  
Wellington City Council

# **Santa Parade: Proposed Temporary Road Closures Sunday 13 Nov 2011**

**Absolutely  
POSITIVELY  
Wellington**  
ME HEKE KI PŌNEKE  
WELLINGTON CITY COUNCIL