
ORDINARY MEETING

OF

**PŪRORO ĀMUA | PLANNING AND ENVIRONMENT
COMMITTEE**

MINUTES

Time: 1:30pm
Date: Tuesday, 2 August 2022
Venue: Ngake (16.09)
Level 16, Tahiwī
113 The Terrace
Wellington

PRESENT

Mayor Foster
Deputy Mayor Free
Councillor Calvert
Councillor Condie (via audiovisual link)
Councillor Day
Councillor Fitzsimons
Councillor Foon
Liz Kelly (via audiovisual link)
Councillor Matthews
Councillor O'Neill (via audiovisual link)
Councillor Pannett (Chair)
Councillor Paul (Deputy Chair)
Councillor Woolf (via audiovisual link)
Councillor Young

TABLE OF CONTENTS
2 AUGUST 2022

Business	Page No.
1. Meeting Conduct	5
1.1 Karakia	5
1.2 Apologies	5
1.3 Conflict of Interest Declarations	5
1.4 Confirmation of Minutes	5
1.5 Items not on the Agenda	5
1.6 Public Participation	6
2. General Business	6
2.1 Botanic Garden ki Paekākā to city Hearings	7

1. Meeting Conduct

1.1 Karakia

The Chairperson declared the meeting open at 1:30pm and invited members to stand and read the following karakia to open the meeting.

Whakataka te hau ki te uru,	Cease oh winds of the west
Whakataka te hau ki te tonga.	and of the south
Kia mākinakina ki uta,	Let the bracing breezes flow,
Kia mātaratara ki tai.	over the land and the sea.
E hī ake ana te atākura.	Let the red-tipped dawn come
He tio, he huka, he hauhū.	with a sharpened edge, a touch of frost,
Tihei Mauri Ora!	a promise of a glorious day

1.2 Apologies

Moved Councillor Pannett, seconded Councillor Young

Resolved

1. Accept the apologies received from Councillor O'Neill for partial absence, and Mayor Foster and Deputy Mayor Free for lateness.

Carried

Secretarial note: By leave of the meeting, apologies were accepted for Councillor Rush for absence.

1.3 Conflict of Interest Declarations

No conflicts of interest were declared.

1.4 Confirmation of Minutes

Moved Councillor Pannett, seconded Councillor Day

Resolved

1. Approves the minutes of the Pūroro Āmua | Planning and Environment Committee Meeting held on 23 June 2022, having been circulated, that they be taken as read and confirmed as an accurate record of that meeting.

Carried

1.5 Items not on the Agenda

There were no items not on the agenda.

1.6 Public Participation

There were no requests for public participation.

2. General Business

Secretarial note: The following members of the public spoke to their written submissions:

Name	Submission page number
River	14
Catharine Underwood	16
David Middleton (Tinakori Road Business and Residents Group)	21
Alyssa Barbieri	29
Dylan Cliff	30
Mark Skinner	31
Dr Anne Phillips	34
Nick Russ	39
Christian Williams (Nocar Cargo)	41
Chris Ford (Disabled Persons Assembly)	42
Alex Dyer (Cycle Wellington)	48
Richard Murcott	52
Andrew Jacombs	61
Vivienne Revell	68
Adam Cheney	70
Mazz Scannell	71
Murray Pillar	77
Jennifer Button (Friends of the Bolton Street Cemetery)	80
Michael Teague	82

(Councillor Paul left the meeting at 1:41pm.)
(Councillor Paul joined the meeting at 1:44pm.)
(Councillor Day left the meeting at 1:53pm.)
(Liz Kelly joined the meeting at 1:54pm.)
(Councillor Day joined the meeting at 1:57pm.)
(Councillor Woolf joined the meeting at 1:57pm.)
(Councillor O'Neill left the meeting at 2:00pm.)
(Deputy Mayor Free joined the meeting at 2:13pm.)
(Mayor Foster joined the meeting at 2:19pm.)
(Councillor Matthews left the meeting at 2:28pm.)
(Councillor Matthews joined the meeting at 2:30pm.)

The meeting adjourned at 2:43pm and returned at 3:00pm with the following members present: Councillor Pannett, Councillor Paul, Councillor Matthews, Councillor Day, Councillor Young, Councillor Calvert, Councillor Fitzsimons, Deputy Mayor Free, Mayor Foster, Liz Kelly, Councillor Condie and Councillor Woolf.

(Councillor Foon joined the meeting at 3:01pm.)
(Councillor Paul left the meeting at 3:54pm.)
(Councillor Paul joined the meeting at 3:55pm.)
(Councillor Day left the meeting at 4:09pm.)

(Councillor Day joined the meeting at 4:11pm.)
(Councillor Matthews left the meeting at 4:11pm.)
(Councillor Matthews joined the meeting at 4:13pm.)
(Councillor Day left the meeting at 4:20pm.)

2.1 Botanic Garden ki Paekākā to city Hearings

Moved Councillor Pannett, seconded Councillor Paul

Resolved

That the Pūroro Āmua | Planning and Environment Committee:

1. Receive the information.
2. Hear the oral submitters and thank them for their submissions.

Carried

Attachments

- 1 David Middleton
- 2 Richard Murcott
- 3 Andrew Jacombs

(Councillor Fitzsimons left the meeting at 4:31pm.)

The meeting concluded at 4:32pm with the reading of the following karakia:

Unuhia, unuhia, unuhia ki te uru tapu nui	Draw on, draw on
Kia wātea, kia māmā, te ngākau, te tinana, te wairua	Draw on the supreme sacredness To clear, to free the heart, the body and the spirit of mankind
I te ara takatū	
Koia rā e Rongo, whakairia ake ki runga	Oh Rongo, above (symbol of peace)
Kia wātea, kia wātea	Let this all be done in unity
Āe rā, kua wātea!	

Authenticated: _____
Chair

ORDINARY MEETING

OF

**PŪRORO ĀMUA | PLANNING AND ENVIRONMENT
COMMITTEE**

MINUTE ITEM ATTACHMENTS

Time: 1:30pm
Date: Tuesday, 2 August 2022
Venue: Ngake (16.09)
Level 16, Tahiwi
113 The Terrace
Wellington

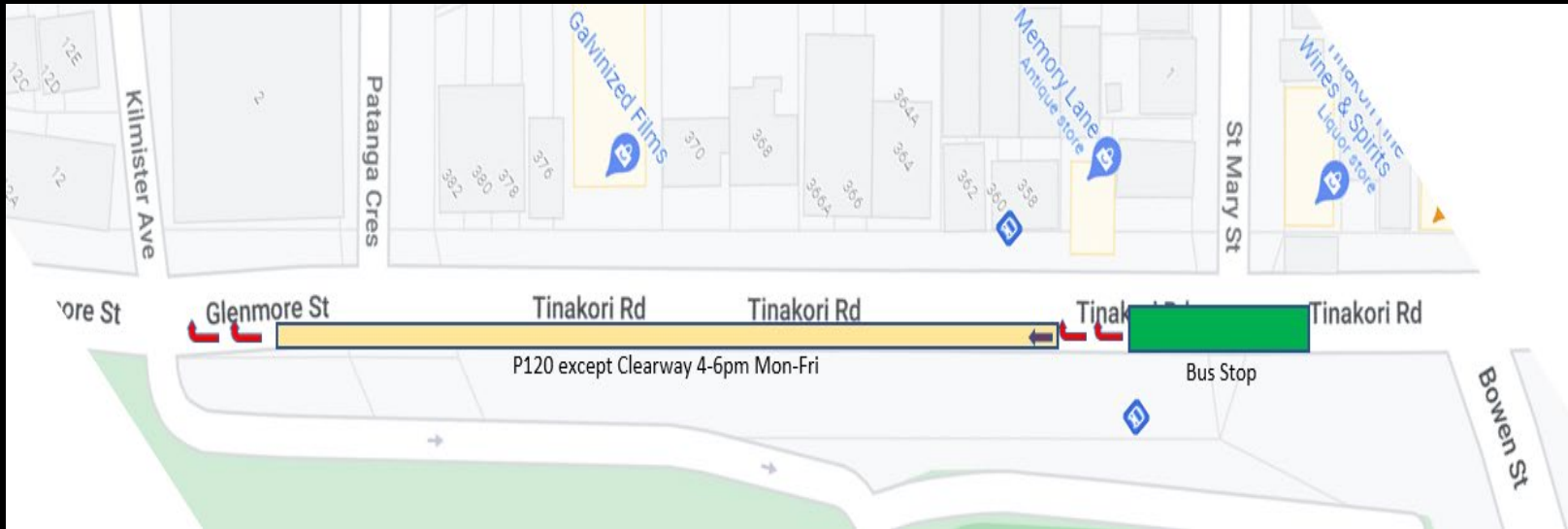
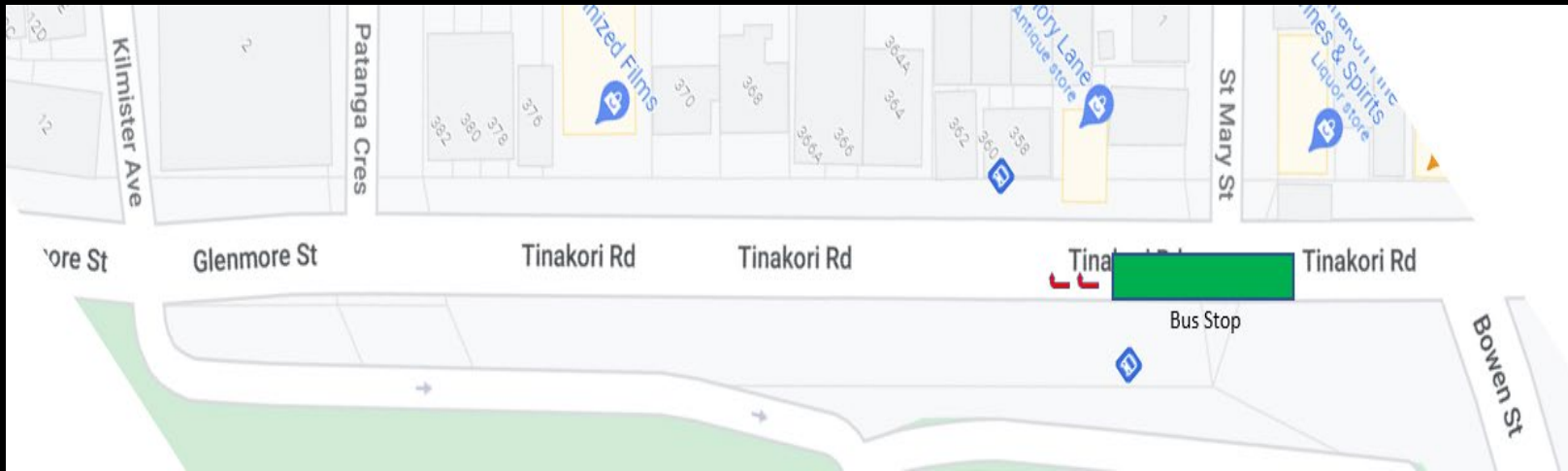
Business

Page No.

2.1 Botanic Garden ki Paekākā to city Hearings

- | | |
|--------------------|----|
| 1. David Middleton | 2 |
| 2. Richard Murcott | 4 |
| 3. Andrew Jacombs | 12 |

Item 2.1 Attachment 1





WCC TR134-22

Proposed Cycle and Bus Lanes

Botanic Gardens to Waterfront

R Murcott
Pedestrian / Cyclist
Thorndon

26 July 2022

I wish to represent my submission orally

A Very Problematic TR - changing regulations

- High on pedestrian marginalisation
- Low on pragmatism
- Zip consultation with traffic/roading engineers
- Low on data
- Lots of ideology
- Significant impacts on amenity
- Low on the option of improving *road sharing*

Safety

Trial road space “*reallocations*” have resulted in some wicked results.

Debris and rubbish continuously migrate to the edge of the road.

Especially in Wellington’s terrain & weather.

The **safer** part of the road for two-wheeled vehicles is the regularly travelled, cleaner path.

The left side of the **shared** path on the roadway.

Mode change can be achieved by:

- road **sharing**
- road **craft**
- road user **training**

For **ALL** Road Users



Pedestrian Safety & Amenity

Bus users

should never feel competition from private vehicles

Marginalisation of the health & wellbeing of pedestrians

Pedestrians should not need to:

- feel intimidated by vehicles (*vehicles lined-up to cross pedestrians' paths on/off the bus*)
- step away from the natural footpath to access a bus
- encounter an unnecessary change of surface, or gradient
- hike extra distances from shelters and curbs merely to reach the bus

Tinakori Rd Bus Stop

vehicles should **not** be *enabled* to **overtake** a parked BUS **on the left**

Buses are manoeuvrable

Park the bus beside the footpath curb

- guarantees no passing on the left



Proposed bus stop platform, Tinakori Rd

<https://www.transportprojects.org.nz/current/botanic-garden-to-city/project-details/>

Lets Stop Wellington Moving !?

Why park a bus in the middle of the road?

The unintended consequences ... ?
Esp. for lengthy stops

More honesty & transparency

- where's the traffic engineers'
- evidence?
- modelling?
- convincing data?

Buses are manoeuvrable
Park beside curb



Bus park marked in yellow

Safety

Do not ban this right hand turn

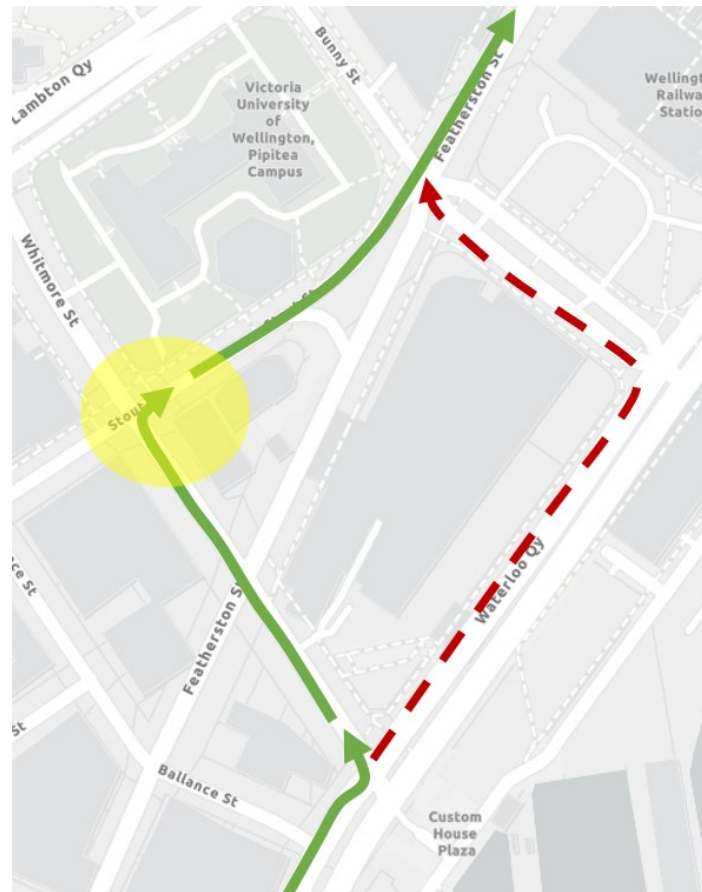
From Whitmore St into Stout St

Calmer route.

Banning would seriously limit navigation options.

More hazardous on the alternative route to Thorndon

- more traffic volume
- more pedestrians/railway station activity
- wind wash



Amenity

On street parking is essential for many citizens to access the major assets of the city's major amenity, the Town Belt, e.g. The Botanic Gardens, Anderson Park, Rose Gardens, The Dell, etc

For numerous well known reasons many citizens, families and visitors require a car to reach this destination

And to transport the things needed to undertake their activities when they get arrive.

Where's the data on the impact of removing so much on-street parking in Bowen St and Tinakori Rd?

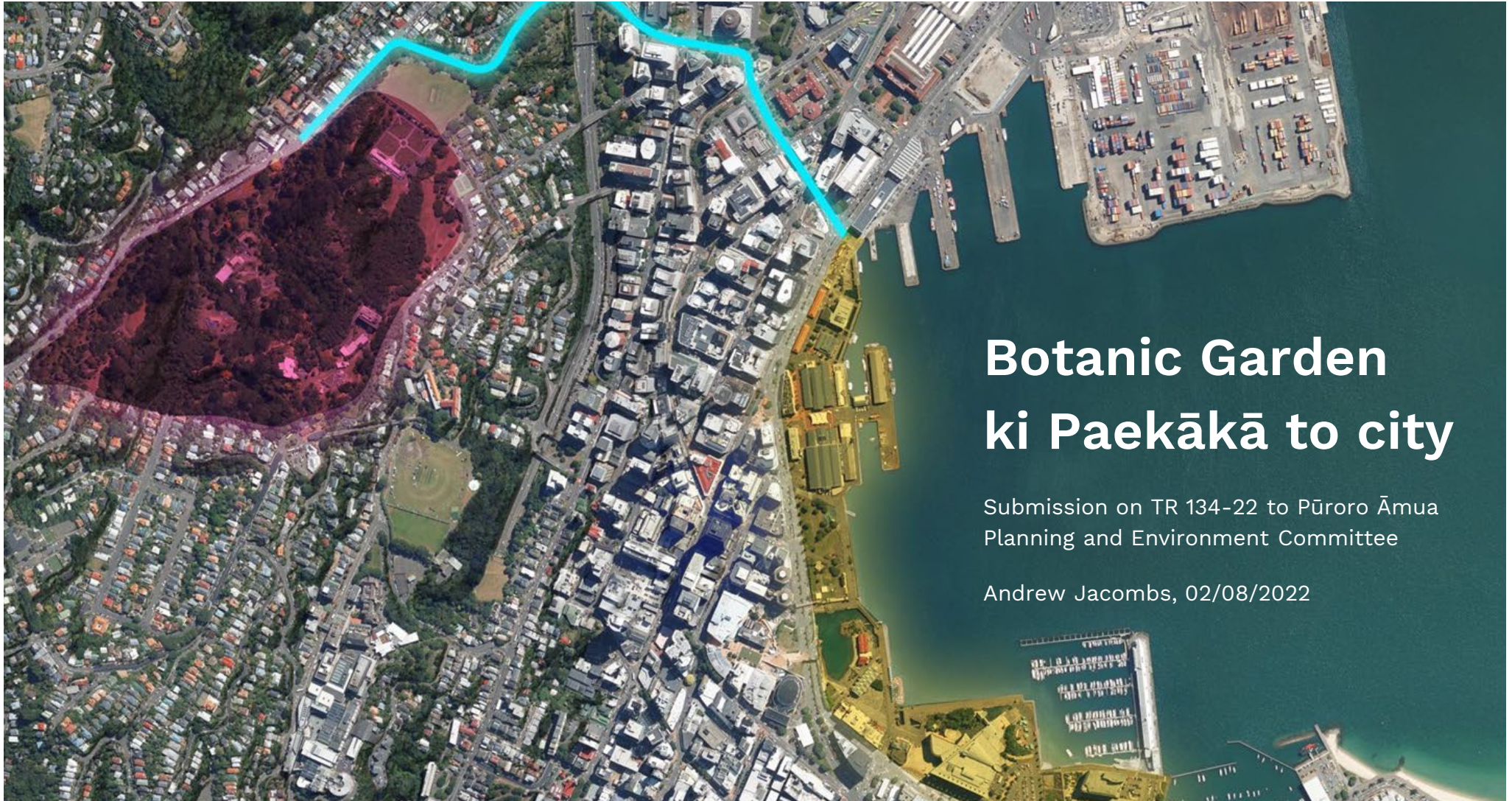
i.e. the impacts on amenity.

What about Glenmore St?

- the proposal is not transparent enough



Questions



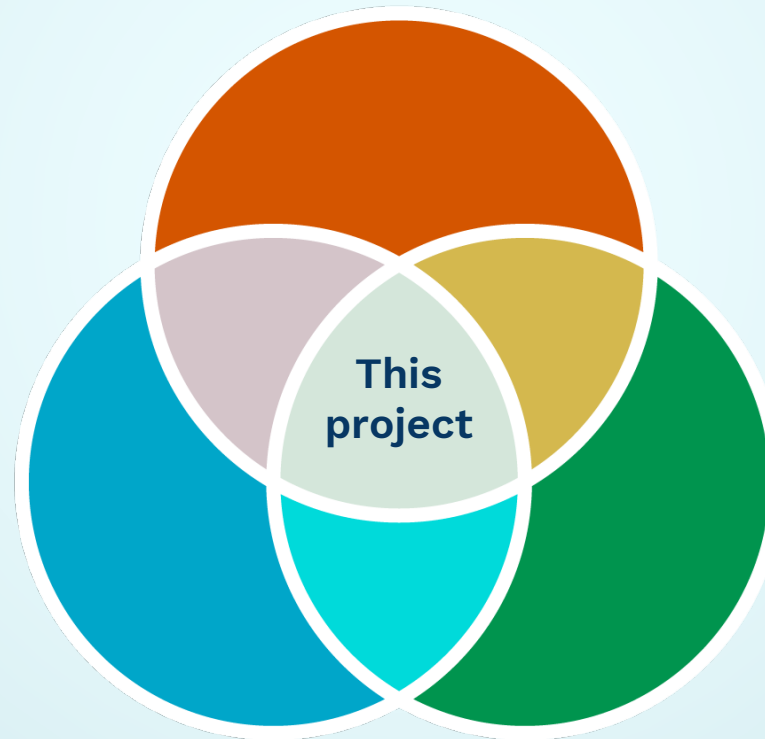
Botanic Garden ki Paekākā to city

Submission on TR 134-22 to Pūroro Āmua
Planning and Environment Committee

Andrew Jacombs, 02/08/2022

Why I care about this, and you should too

Safety for all road users



A vibrant city where
children lead rich
and happy lives

Climate action to
reduce transport
emissions

A 7–9am weekday bus lane means
an unsafe road 94% of the time



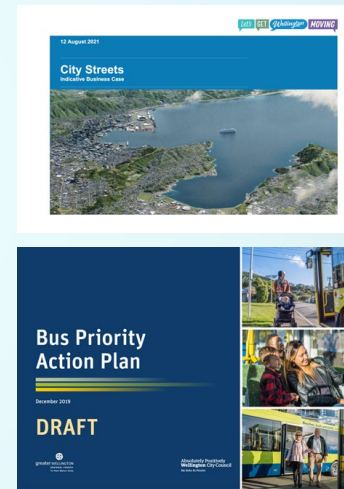
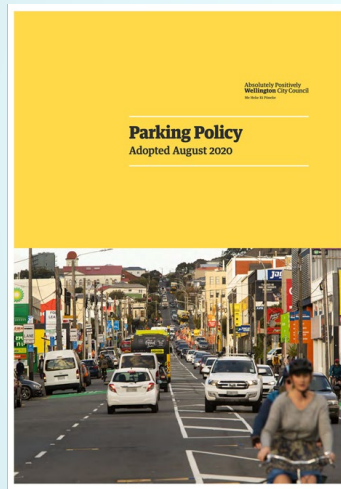
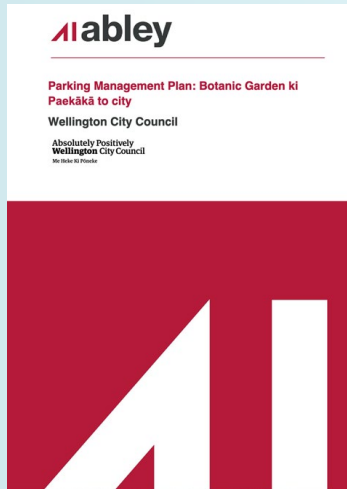


Parking is a solvable problem



Presence of off-street parking is unverified, and was determined by looking for garages, carports, and driveway space on Google street view and aerial imagery.

Your own policies and reports support a 24/7 bus lane







1. Please prioritise a city in which children can thrive
2. Please prioritise sustainable transport modes
3. Please prioritise safety of vulnerable road users
4. Please follow the policies you've already adopted

Thank you