

**Absolutely Positively
Wellington City Council**

Me Heke Ki Pōneke

Ordinary Meeting of Wellington Region Waste Management and Minimisation Plan Joint Committee

Ngā Meneti | Minutes

9:30am Rāhina Monday, 18 Mahuru September 2023
Ngake (16.09), Level 16, Tahiwī
113 The Terrace
Pōneke | Wellington



PRESENT

Deputy Mayor Swales
Councillor Cretney
Councillor Gray (via audio-visual link)
Councillor Hayward
Councillor Hullena (via audio-visual link)
Councillor Mitchell (Deputy Chair)
Councillor Pannett (Chair)

IN ATTENDANCE

Councillor Halliday

TABLE OF CONTENTS

18 SEPTEMBER 2023

Business	Page No.
1. Meeting Conduct	5
1.1 Karakia	5
1.2 Apologies	5
1.3 Conflict of Interest Declarations	5
1.4 Confirmation of Minutes	5
1.5 Items not on the Agenda	5
1.6 Public Participation	5
2. General Business	6
2.1 The Waste Management and Minimisation Plan - Oral Submissions	6

1. Meeting Conduct

1.1 Karakia

The Chairperson declared the meeting (hui) open at 9:32am with the following karakia:

Whakataka te hau ki te uru,	Cease oh winds of the west
Whakataka te hau ki te tonga.	and of the south
Kia mākinakina ki uta,	Let the bracing breezes flow,
Kia mātaratara ki tai.	over the land and the sea.
E hī ake ana te atākura.	Let the red-tipped dawn come
He tio, he huka, he hauhū.	with a sharpened edge, a touch of frost,
Tihei Mauri Ora!	a promise of a glorious day

1.2 Apologies

No apologies were received.

1.3 Conflict of Interest Declarations

No conflicts of interest were declared.

1.4 Confirmation of Minutes

Moved Councillor Pannett, seconded Andy Mitchell

Resolved

That the Wellington Region Waste Management and Minimisation Plan Joint Committee:

1. Approves the minutes of the Wellington Region Waste Management and Minimisation Plan Joint Committee Meeting held on 24 July 2023, having been circulated, that they be taken as read and confirmed as an accurate record of that meeting.

Carried

1.5 Items not on the Agenda

There are no items not on the agenda.

1.6 Public Participation

There is no public participation.

2. General Business

Council	Names	Organisation
Wellington City Council	Sue Coultis	Waste Free Welly
Wellington City Council	Ellen Blake	Living Streets Aotearoa
Porirua City Council	Cory Hope and Makerita Makapelu	Te Hiko - a part of Wesley Community Action
Kāpiti Coast District Council	David Cates	Ca-TES Enterprise Ltd & "Bin-Upright"
Wellington City Council	Liam Prince	The Rubbish Trip
Masterton District Council	Geraldine Durrant	
Hutt City Council	Shane William Ford	scribblersincnzlimited
Wellington City Council	Alison Forrest	Owhiro Bay Residents Association (OBRA)
Wellington City Council	Steven Almond	Wellington City Council Environmental Reference Group
Kāpiti Coast District Council	Mark Wickens	

2.1 The Waste Management and Minimisation Plan - Oral Submissions

Moved Councillor Pannett, seconded Councillor Hayward

Resolved

Taunakitanga | Officers' Recommendations

Officers recommend the following motion.

That the Wellington Region Waste Management and Minimisation Plan Joint Committee:

1. Receive the information.
2. Hear the oral submitters and thank them for their submissions.

Carried

Attachments

- 1 Te Hiko - a part of Wesley Community Action - Handout
- 2 David Cates - CaTES Enterprise Ltd & "Bin-Upright" - Presentation
- 3 Geraldine Durrant - Presentation
- 4 Steven Almond - Wellington City Council Environmental Reference Group - Presentation

The hui concluded at 12:00pm with the reading of the following karakia:

Unuhia, unuhia, unuhia ki te uru tapu nui
Kia wātea, kia māmā, te ngākau, te tinana,
te wairua
I te ara takatū
Koia rā e Rongo, whakairia ake ki runga
Kia wātea, kia wātea
Āe rā, kua wātea!

Draw on, draw on
Draw on the supreme sacredness
To clear, to free the heart, the body
and the spirit of mankind
Oh Rongo, above (symbol of peace)
Let this all be done in unity

Authenticated: _____
Chair

Sensible new proposal for waste collection

Living Streets Aotearoa



www.livingstreets.org.nz

[https://youtube.com/clip/UgkxxTA5t38fIAnH_5IRPGv5RTdhD50sgwRM?
si=GAbYJyZEjcF6WShL](https://youtube.com/clip/UgkxxTA5t38fIAnH_5IRPGv5RTdhD50sgwRM?si=GAbYJyZEjcF6WShL)

The issue – footpaths blocked

- Barriers to walking



The issue – rubbish is prioritised

- Footpath clutter



Sensible quick fix improvement

- Place all waste and rubbish bags on the road at the kerb
- Simple education programme should be all needed to implement
- Highlight waste management not dumping
- Benefits
 - will support safer working conditions for waste collectors
 - same cost but more efficient
 - rates impact neutral or improved – collection separately identified in some rates
- Much improved situation for all pedestrians everywhere in Wellington Region, people prioritised on footpaths

How it could be – people prioritised and waste in its place



Te Hiko: Our response to the draft Wellington Region Waste Management and Minimisation Plan (WMMP) 2023-2029.

Speaking notes for the Wellington Region Waste Management and Minimisation Plan Oral Submissions - Wellington Regional Waste Management and Minimisation Plan Joint Committee - 18 September 2023

Speaker: Makerita Makapelu mmakapelu@wesleyca.org.nz


- Brief intro to Te Hiko
 - We are a centre for community design and innovation. We spark and tautoko new community solutions. We work to understand the things that are holding social and economic problems in place, and we work alongside communities to build something better. We demonstrate what's possible when the community is challenged and enabled to create systems that work for them.
 - Our main areas of strategic kaupapa are to innovate around how to build localised economies that build abundance and connected communities.
- Appreciation
 - We appreciate the efforts of the Wellington Regional Waste Management and Minimisation Plan Joint Committee and the mahi of all involved the get the plan to where it is today.
 - We are pleased to see that the draft WMMP includes references to the importance of mana whenua and acknowledges that communities have a voice in the development of the strategy and in its implementation. We see this reflected in some of the guiding principles and in the objectives and we are hopeful that these guiding principles and objectives relating to mana whenua and the community voice are maintained and given the highest priority.
- Our area of focus
 - With respect to waste minimisation and management, our focus is on composting of kai scraps and organic waste in our communities by our communities.
- What we are concerned about in the WMMP

- There is no target for enabling communities to be managing their own kai scraps and other organic waste.
- Our experiences with community composting tell us that kai scraps and most other organic green waste can be efficiently and safely processed in the community ensuring that this valuable local resource stays in the community for use by the community.
- We are concerned that the omission of targets for community led solutions means that commercial interests will be unjustly favoured over community interests.
- The reliance on a regional organics processing facility and kerbside recycling scheme suggests a singular solution to organic waste. We would suggest that a range of diverse solutions are the most likely to create sustainable responses across the region. This would include hapu, iwi and community led responses.
- Te Hiko expects to grow our local composting work as part of a regional response to organic waste. It's not clear from the plan that community-based waste management solutions are part of the overall strategy.
- We are concerned about the target to create a regional organics processing facility by 2029. We do not support this as we believe this will create a lot of new emissions from heavy vehicles moving organic waste across the region.
- We are also concerned that a regional organics processing facility for processing kai scraps will take the form of industrial scale anaerobic bio digestion. In our view, there are too many question marks over the green credentials of industrial-scale anaerobic bio digestion, and we are concerned about the potential negative implications for soil health and food security for it to be the best option for our region.
- We do not want to see kai scraps becoming commoditised and our communities being 'mined' for organic waste to support commercial interests.



- We believe that a decentralised community-based approach where these valuable organic resources remain in our communities to directly benefit our communities is the better option for our region.
- Our dreams for a sustainable, circular economy around kai scraps and organic waste
 - We see a huge opportunity to create a truly localised circular economy around kai scraps and organic green 'waste' which keeps the resources created by the community in the community and at the same time creates local training and employment opportunities in managing and processing these resources.
 - We dream of a time when local people are employed to manage and process kai scraps and organic green 'waste' in their own community and transform it into biology rich compost to support a growing network of home and/or community-based kai production projects and to help with the regeneration of Papatūānuku.
 - One of the biggest issues faced by community gardens and composting is lack of funding to support this important mahi. Given the future changes to the laws regarding kai scraps and the need for services to meet this need, there is an opportunity for community based kai scraps processing to become the funding source that would enable community gardens to be sustainably funded and help them to thrive.
- Our proposal
 - We note that the target to introduce kerbside foodwaste collection is 2030, once the regional facility is completed. We see this time period as an opportunity to understand the volume of kai scraps that could be locally collected and composted, saving the cost of transportation and reducing reliance on or even the need for a regional facility.
 - We propose the following target is added to Wellington Region Waste Management and Minimisation Plan:

To develop a model for the administration, management and funding of a diverse organic waste management system for the region by 2030 that enables a diversity of approaches to co-exist, which may include:

- 
- Composting at home
 - Neighbourhood composting of kai scraps
 - Small to medium sized community led social enterprise for collection and composting of organic waste
 - Medium to large commercial operations
- To support the achievement of this new target, we propose a 3 year place based trial, looking at an extended localised kai scraps and composting scheme, enabling the region to track uptake of the scheme, local use and benefit of high quality aerobic compost, and potential diversion from the regional facility. Te Hiko would value the opportunity to work with others on such a trial.
- Our response to the draft PCC action Plan
 - We are encouraged by many of the actions in the PCC action plan and in particular the actions 2, 7, 8, 10, 16, 20 and 23. It's great to see collaboration with stakeholders is included in the actions and Te Hiko is very keen to collaborate with PCC, iwi and community stakeholders to help develop community led solutions particularly regarding kai scraps and organic 'waste' collection and composting.

Welcome,

I am Dave Cates

CEO of Ca-TES Enterprise LTD,

Discussing.....

**Wind,
Wheelie-bins,
Pollution!
&
The game
changer!**



BiN↑PRiGHT
Wheelie-bin Stabilisers

Do we recognize this as an issue??



Have we become comfortable with this problem?



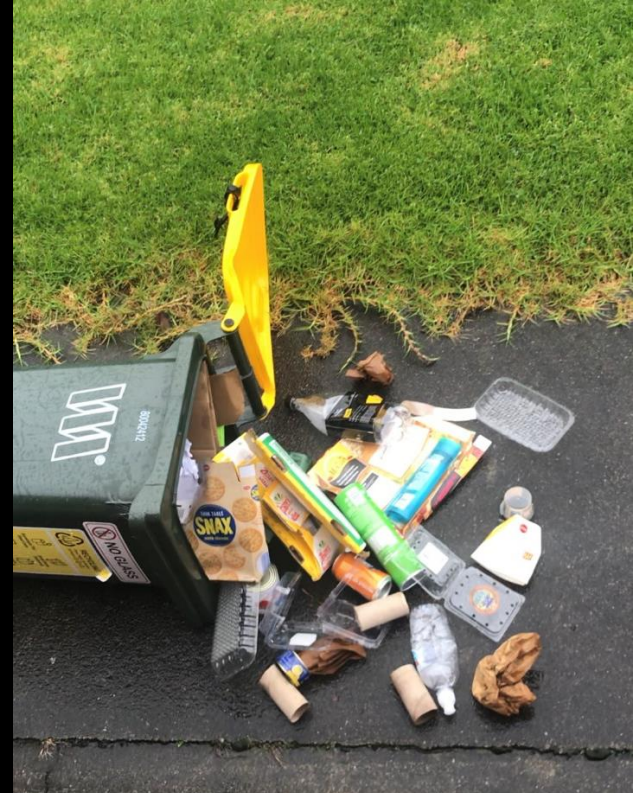
Is this the tidy green country we pride ourselves on?

Could this be called "Legal Dumping"??



WHY have we put up with this for so long???

- *You know it ends up in our waterways, streams, rivers and the ocean, affecting our precious marine life*



When the wind blows over bins, with bin-lid-clips!

AA 🔒 🔍 plastic pollution on beach 🎤



Google



🔍 plastic pollution on beaches 📷

[All](#) [Images](#) [News](#) [Videos](#) [Maps](#)

Over 400 million tons of plastic are produced every year for use in a wide variety of applications. **At least 14 million tons of plastic end up in the ocean every year**, and plastic makes up 80% of all marine debris found from surface waters to deep-sea sediments.





The Community wants a solution!



Rocks, Concrete lumps & Firewood left on the Footpath or road!

Problem Summary.....

Garbage in our streets- Unsightly and Unhygienic!

Plastics in our Waterways- (Streams, Rivers, Lakes and Sea)- affects marine life and people.

Bin clips don't fix it- Safe-waste clips only prevent lids blowing open.

Footpaths blocked- with either full bins or empty bins affecting all pedestrians but especially the impaired.

Trucks holding up traffic – Drivers have to get out to pick up or move bins. (potentially causing accidents by impatient commuters)

Heavy debris in & on Bins- Community aware and desperate- causes large debris on our footpaths and roads.



The Solution!



BiN↑PRiGHT

Wheelie Bin Stabilisers



Fits to existing wheelie bins!



A Hero with a great pair of Shoes 😊



A close-up photograph of a bright yellow plastic bin. The bin is curved and has a recessed area on its side with a circular opening. The words "BinUpRight" are embossed in a large, stylized font across the front of the bin. The bin is sitting on a dark, textured surface, possibly asphalt. Another similar yellow bin is partially visible in the background to the right.

Dave Cates

Ca-TES Enterprise Ltd

admin@binupright.co.nz

Ph: 027 491 8645



FROM WASTE TO RESOURCE

BY GERALDINE DURRANT

We are all in it together!



553 kgs per person of waste to Class 1 landfills in 2021. Of this waste **88 kg** per person was collected at the kerbside.



39 kg per person of kerbside recycling is collected. This is a reduction from a peak of **53 kg** per person in 2014.



Of the waste sent to Class 1 landfills, approximately **57%** of waste could be diverted. The highest contributing waste streams includes:

26.6%
Organic



20.7% **Cleanfill**



6.7% **Paper**





Kerbside



Inspire



Support





Sing

Kerbside

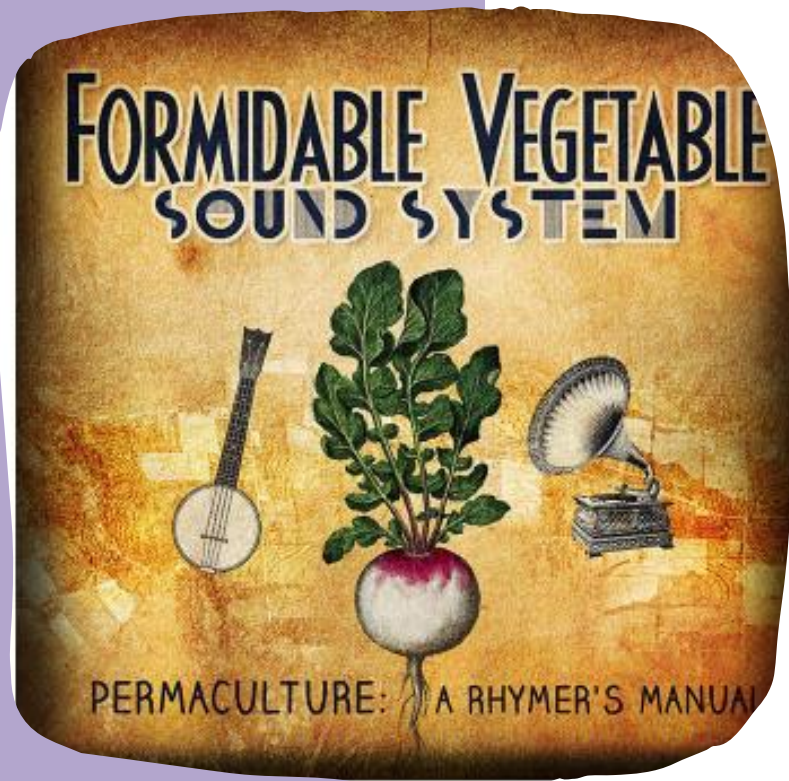
Inspire

Support

Singing



“The most complex thing in life is
how to keep things simple!”



NO SUCH THING AS WASTE

[No Such Thing As Waste | Formidable Vegetable | Refuse Reduce Reuse](#)

[Repair Recycle Renew Song - YouTube](#)

NO SUCH THING AS WASTE | FORMIDABLE VEGETABLE | REFUSE REDUCE REUSE REPAIR RECYCLE RENEW
SONG - YOUTUBE

WCC ERG oral submission on WMMP 2023 - 2029

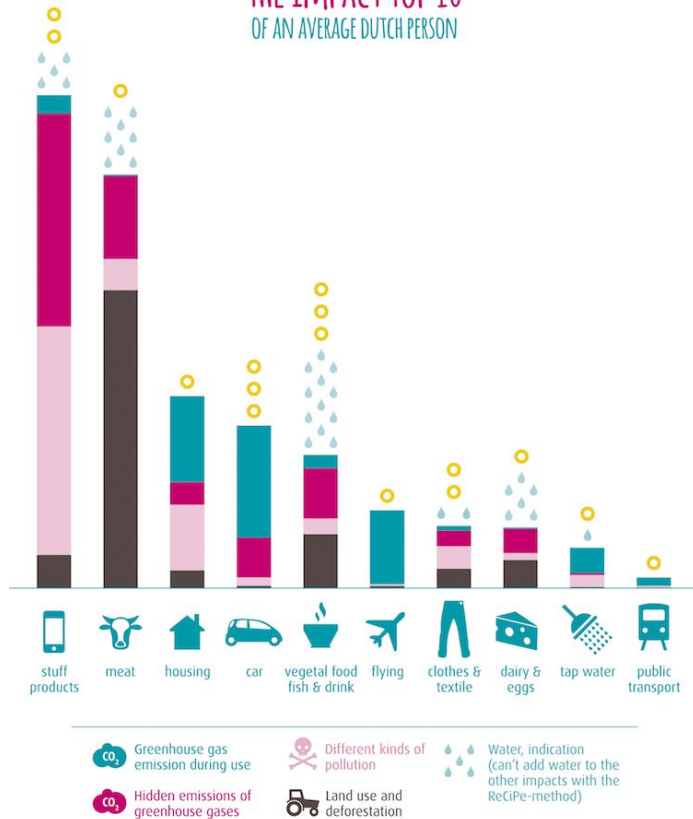
Steven Almond, on behalf of WCC ERG

Key points

- ERG welcomes the significant emphasis on need for Circular Economy solutions
- Acknowledge positive progress on lower levels of Waste Hierarchy (plan for composting hubs, network of recovery sites)
- We encourage establishment of food scrap collection and composting earlier than 2030
- Encourage more specific support of businesses and industry to shift to a Circular Economy - identify clear key sectors.

We need to keep in mind the scale of the problem...

THE IMPACT TOP 10 OF AN AVERAGE DUTCH PERSON



©Babette Porcelijn 2017

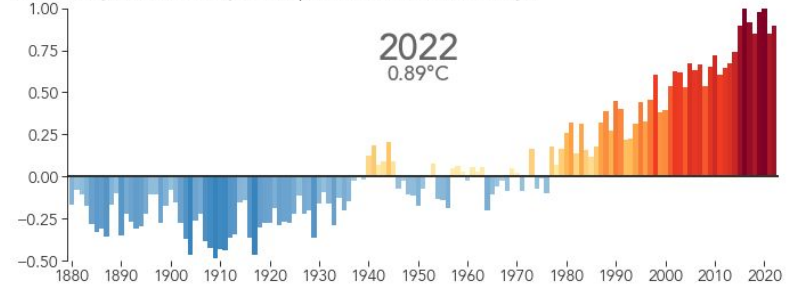
Babette Porcelijn - The Hidden Impact

Accessed 17.9.23

<https://mymodernmet.com/babette-porcelijn-hidden-impact/>

Last 9 Years Warmest on Record

Global Temperature Anomaly (°C compared to the 1951-1980 average)



Nasa Earth Observatory

Accessed 17.9.23

<https://earthobservatory.nasa.gov/world-of-change/global-temperatures>

- Manufacturing products is the most harmful activity when all impacts are considered
- Rapid decarbonisation is needed
- Waste is only what we see at the end, pollution and emissions at product end of life are only a small part of the total impact
- Upstream manufacturing emissions are not part of Wellington's emissions, but are still important

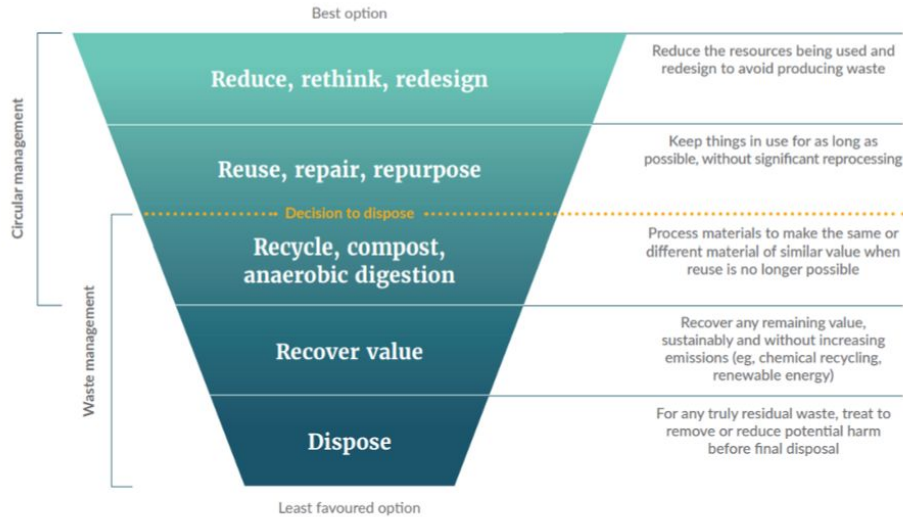


Figure 2: Te pūnaha whakarōpū para | The waste hierarchy (source: Ministry for the Environment, Te rautaki para | Waste strategy)

- The more we move up the Waste Hierarchy, the more we reduce all of these impacts.
- This is why Circular Economy is such a powerful model.
- The WMMP focusses on waste emissions at the landfill.
- It should emphasise the upstream manufacturing emissions / impacts much more.

Regional action no.6.

Investigate, consider, trial, and implement options for establishment or improvement of regional infrastructure and services.

- Organic waste
- C&D waste
- Biosolids
- Material Recovery
- Region wide resource recovery network

Multiple Wellington City Actions refer to similar improvements

Note - 10% waste reduction goal by 2027

Southern Landfill January 2023



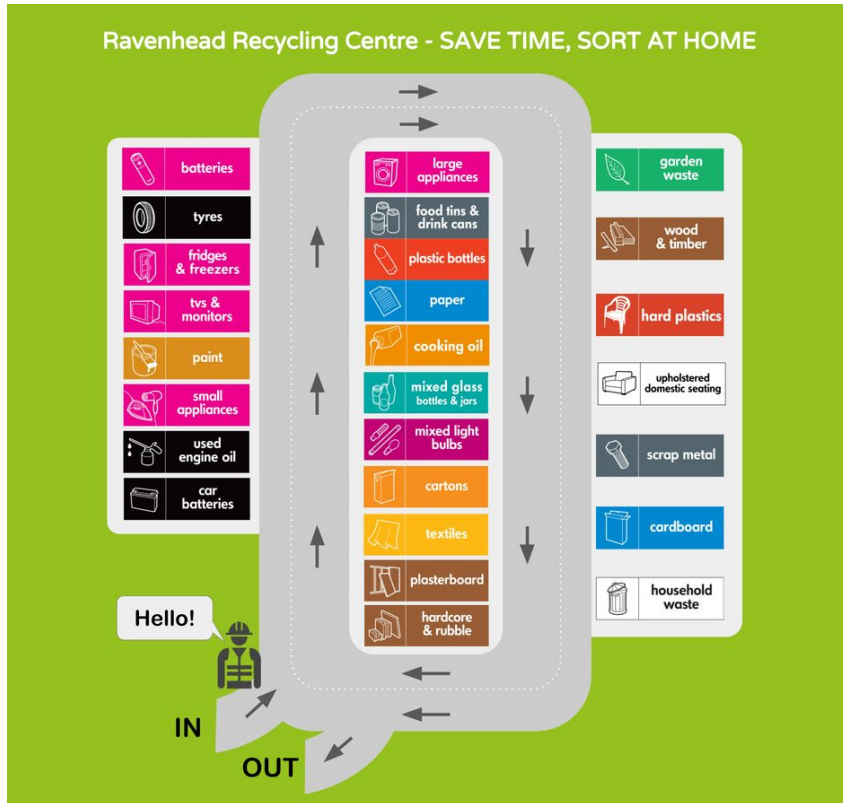
Fridges in landfill section



Scrap metal in landfill

Existing facility is commonly misused. Much 'waste' is easily divertable. **Why?**

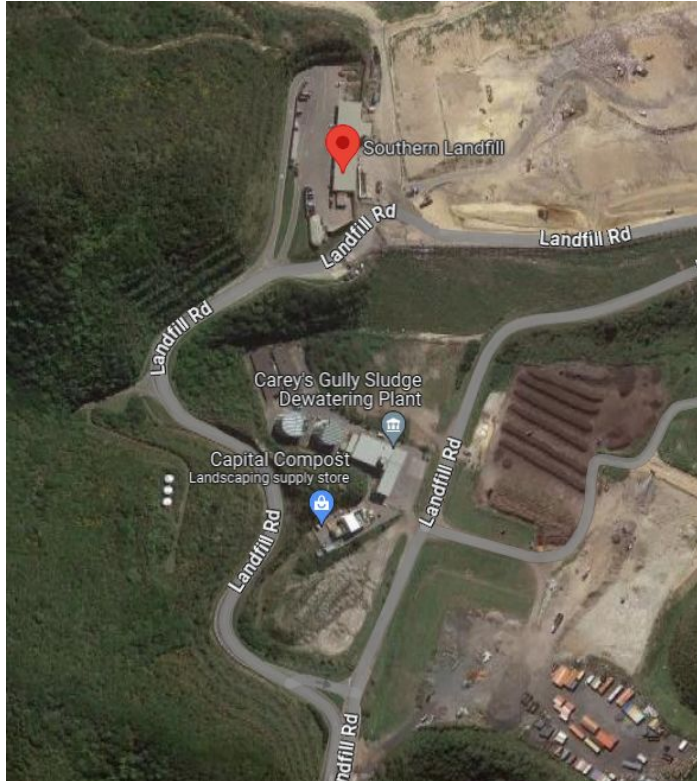
Ravenhead Recycling Centre, North West England



- Domestic waste only
- All services in one location
- Residual waste is the last area (after diversion)
- Residual waste area is not larger than any other category
- Simple pricing - \$0 for local domestic users
- Sites across region have consistent layout and pricing



Southern Landfill, Wellington



- Services split between two different locations (Tip Shop and Landfill)
- Need to drive between household recycling and metal, green waste, landfill etc...
- Replicated services (e-waste in two locations)
- Residual waste is the second stopping point
- Residual waste area much larger than other areas
- Complex pricing:
 - 6+ charge categories
 - Charge by weight, and per item
- Sites across region have inconsistent layout and pricing
- 1 x station wagon of green waste = \$15

Spicer Landfill, Porirua



- Services split between four different locations (Trash Palace, Recycling centre, Landfill, Green waste)
- Need to drive between household recycling and landfill, need to drive again to green waste area
- Residual waste area much larger than other areas
- Complex pricing:
 - 6+ different charge categories - price levels in each one
 - Charged by size of vehicle / trailer (no weighbridge)
- Sites across region have inconsistent layout and pricing
- 1 x station wagon of green waste = \$37

Improvements:

- Current sites can be improved quickly
- Modular systems (e.g. containers, concrete wall systems) can be used to quickly make changes
- Sites across region should have consistent level of services
- Sites should have consistent layout, signage, visual design
- Ideally, pricing should be clear and consistent
- Diversion should always be the first and the easiest option
- Sites should need minimal time, effort, and cost to use

Questions?