

# Voter turnout in the 2022 Wellington local election

---

December 2022

# Overall voting in 2022 Wellington City Council election

---

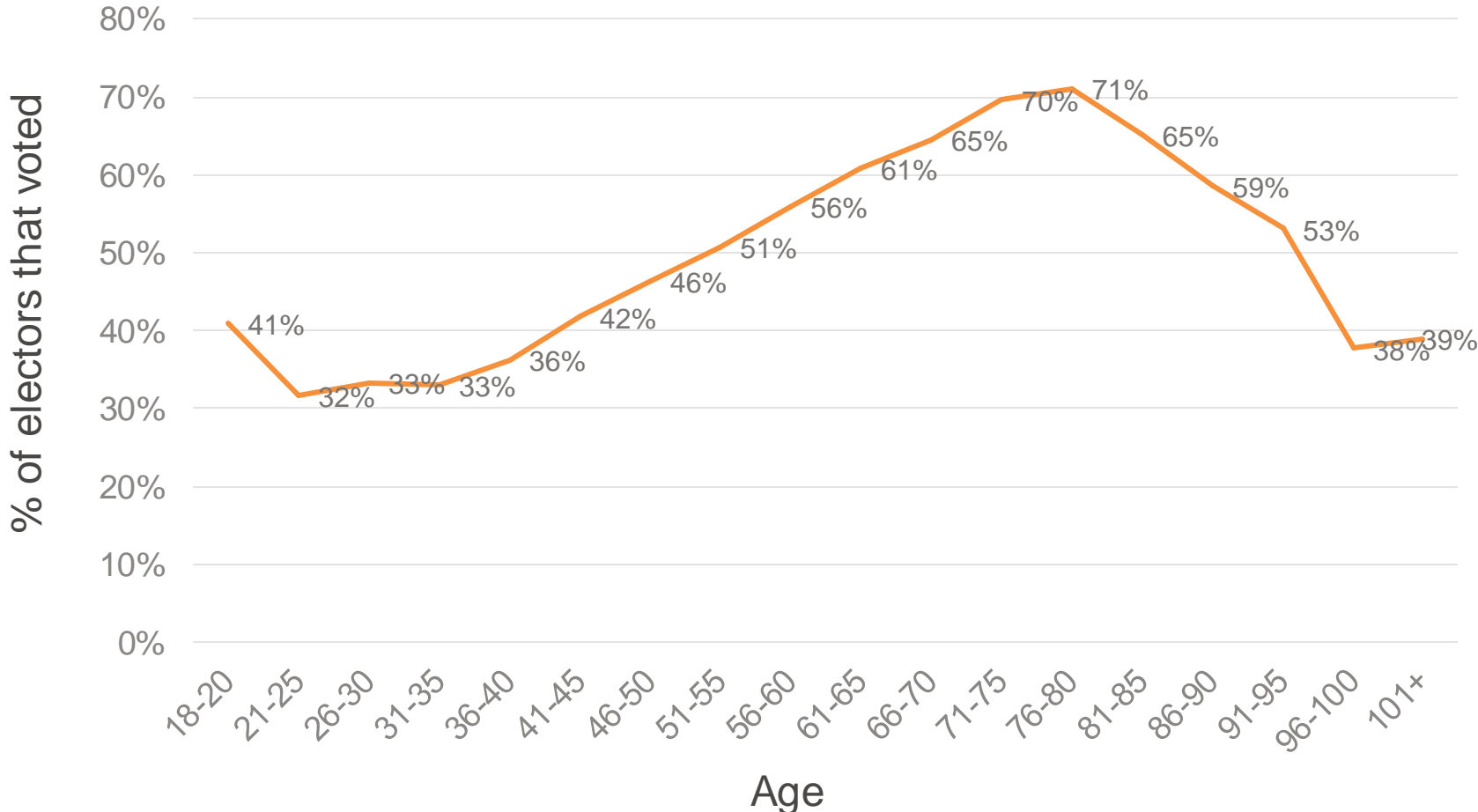
- **45.41% of enrolled electors voted** - a total of 157,181 people were enrolled to vote\*, of which 71,377 people voted.
- **35.11% of electors of Māori descent voted** - on the electoral roll 13,670 people\* identified as being of Māori descent, of whom 4,799 voted.

Information on the following pages outlines voting in the 2022 Wellington City Council election by age, Māori descent status and neighbourhood. The data only includes people enrolled to vote.

Data was accessed from the Electoral Commission jointly with Auckland Council's Research and Evaluation Unit (RIMU). This report largely replicates [a study](#) carried out by RIMU on the 2019 local elections.

\* Enrolments as at 13 October 2022

# Younger people were less likely to vote



# Number of electors by age group

Age group	Number of electors that voted	Number of electors that did not vote	Total
18-20	2069	2986	5055
21-25	5508	11878	17386
26-30	5688	11373	17061
31-35	5201	10556	15757
36-40	5271	9268	14539
41-45	5890	8219	14109
46-50	6558	7608	14166
51-55	6995	6800	13795
56-60	7006	5523	12529
61-65	6140	3960	10100
66-70	5012	2752	7764
71-75	4257	1855	6112
76-80	2933	1195	4128
81-85	1691	905	2596
86-90	791	560	1351
91-95	312	276	588
96-100	46	76	122
101+	9	14	23

# Voting by age

---

- Voting was lowest in the 2022 Wellington elections for 20-40 year olds, with the lowest turn out for 21-25 year olds (only 32% of those enrolled in this age range voted).
- Voting among 18-20 year olds appears higher, with 41% of those enrolled in this age range voting. However, comparing voter turnout to population estimates shows only about half of this age group are enrolled to vote in Wellington, which is much lower than for older age groups. Some will be enrolled to vote in other districts.
- Voting peaked for 71-80 years olds, although was relatively high for people over 50 (up to the late 90s where voter turn out declines to under 40%).

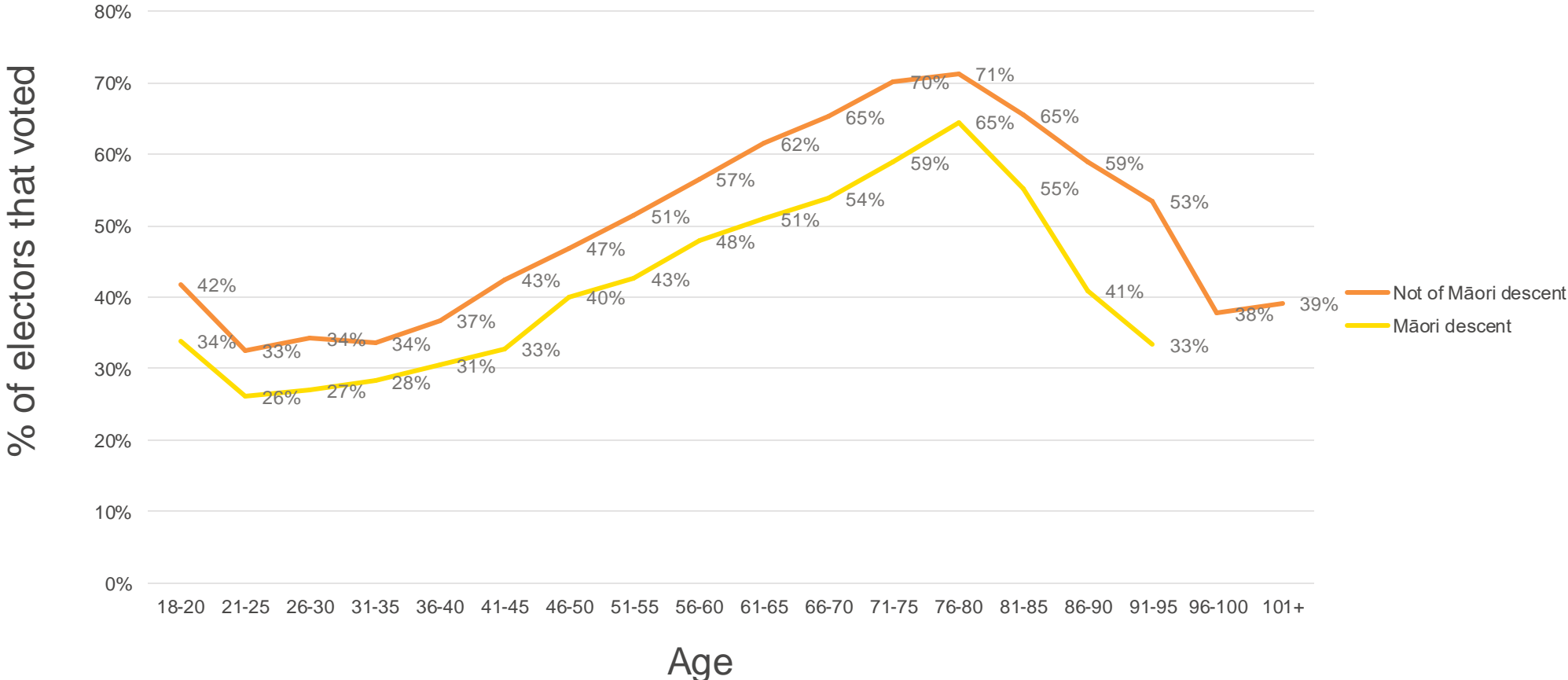
# Voters of Māori descent were less likely to vote

---

People have the option when enrolling to vote to indicate whether they are of Māori descent. Of those in Wellington who are of Māori descent, 4,799 voted (35% of Māori electors).

	<b>% voted</b>	<b>Number enrolled to vote</b>
Māori	35%	13,670
Non-Māori	46%	143,511
Total	45%	157,181

# Voting is similar across age groups for Māori and non-Māori



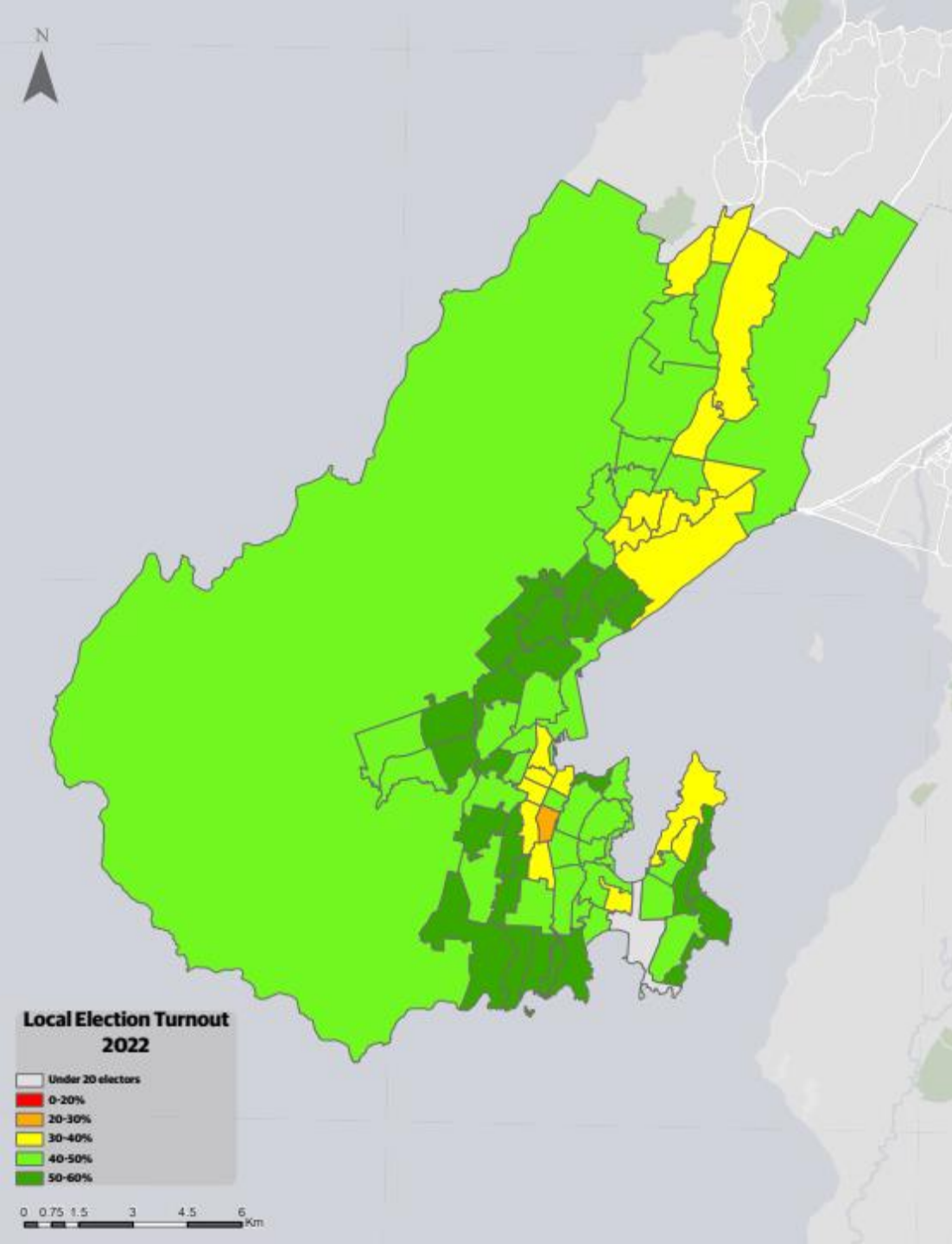
# Voting in WCC's new Māori ward

---

In May 2021, Wellington City Council voted to establish a new Māori ward, Te Whanganui-a-Tara Māori Ward, providing for dedicated Māori representation. While most wards are based on a geographic area, the people voting in the Māori ward are those on the Māori electoral roll.

- 41% of people of Māori descent were enrolled to vote in the newly formed Māori ward.
- 33% of people enrolled in the Māori ward voted.
- 37% of people of Māori descent enrolled in the other wards voted.



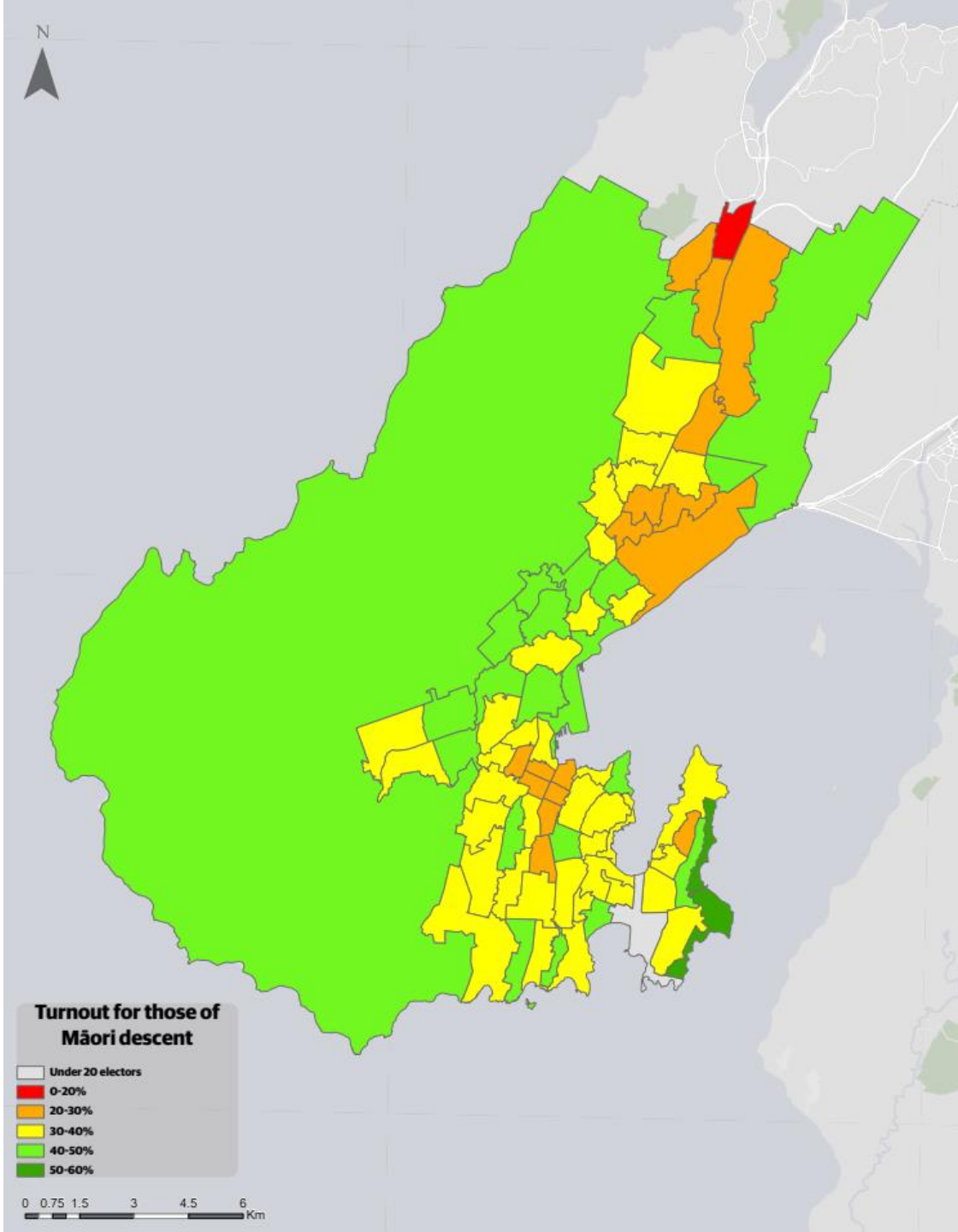


## Proportion of electors who voted by Statistical Area 2 (SA2)

- Mount Cook East had the lowest voter turnout, at just under 30% of those on the electoral roll.
- There were also pockets of lower voter turnout around Miramar peninsula, in the central city and in some northern suburbs.
- Seatoun had the highest voter turnout, where 58% of electors voted.
- The average number of electors per neighbourhood is around 2,000 people.

Basemap credits: LINZ, Esri, HERE, Garmin, Foursquare, METI/NASA, USGS, Eagle Technology, GEBCO, Community maps contributors.

Credit: City Insights GIS Team

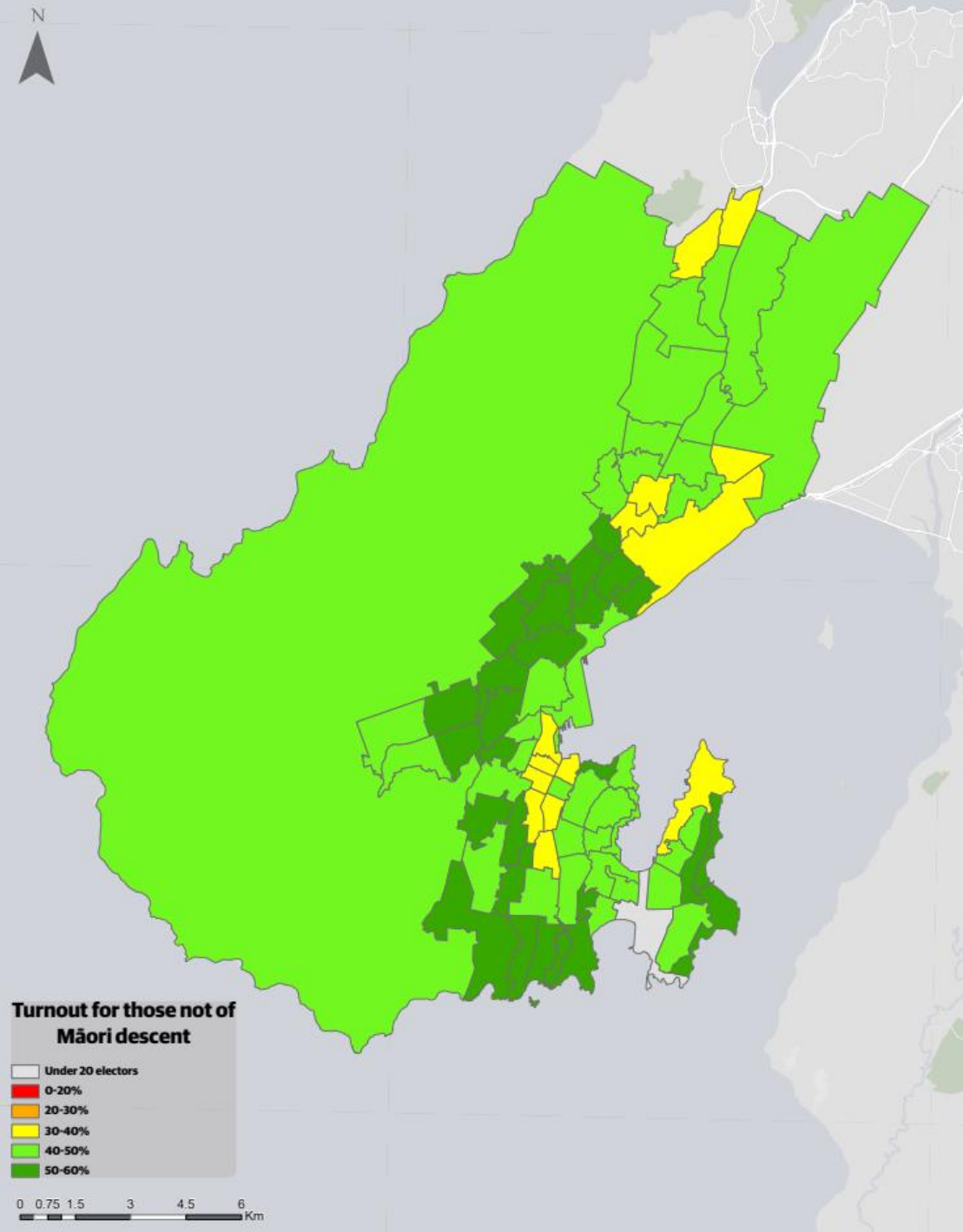


## Proportion of electors of Māori descent who voted by Statistical Area 2 (SA2)

- Linden had the lowest voter turnout, at 18% of electors.
- The highest levels of voting were in Karaka Bay-Worser Bay (54% of those enrolled to vote), Seatoun (52%) and Pipitea-Kaiwharawhara (50%).
- The average number of electors per neighbourhood is around 200 people.

Basemap credits: LINZ, Esri, HERE, Garmin, Foursquare, METI/NASA, USGS, Eagle Technology, GEBCO, Community maps contributors.

Credit: City Insights GIS Team



## Proportion of electors not of Māori descent who voted by Statistical Area 2 (SA2)

- Mount Cook East had the lowest voter turnout, at 30.7% of those on the electoral roll, followed closely by Vivian West (31.5%).
- The highest proportion of electors voting was in Island Bay East (58.2%), Ngaio South (58.1%), Seatoun (57.9%) and Karori North (57%).
- The average number of electors per neighbourhood is around 1,800 people.

Basemap credits: LINZ, Esri, HERE, Garmin, Foursquare, METI/NASA, USGS, Eagle Technology, GEBCO, Community maps contributors.

Credit: City Insights GIS Team