

WELLINGTON SKATE ENGAGEMENT 2020



What we did, what we heard and what now

HOW WE DID IT

131 postcards from Kiwi kids

ENGAGED WITH

826

members of the Wellington community

1,422 social media engagements

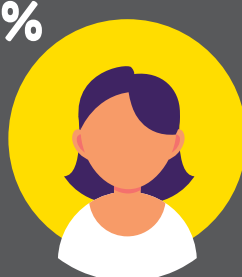
679 online survey submissions

WHO WE SPOKE TO



54% SKATERS
11% SCOOTERS
16% NON-SKATERS

35%



62%



24% UNDER 24 YRS
40% AGED 30-49 YRS
24% PARENTS OF SKATERS

WHAT WE HEARD

'SKATE PARKS IN WELLINGTON ARE OVERCROWDED & NOT WELL MAINTAINED'

'SKATE IS HUGELY POPULAR BUT PROVISION REMAINS DISPROPORTIONATELY LOW IN COMPARISON TO OTHER SPORTS'

'WE NEED MORE SKATEABLE SPOTS AROUND THE CBD'

'AS SKATERS WE ARE OFTEN LOOKED DOWN ON - SKATE NEEDS TO BE PROMOTED AND UNDERSTOOD AS A LEGITIMATE ACTIVITY'

'WE WANT BETTER PARK DESIGN ALLOWING FOR PROGRESSION OF ABILITIES'

63% want sheltered spaces for year-round skating

KEY THEMES:

ACCESSIBILITY

Permission

FUTURE DESIGN & MAINTENANCE

Most popular skate styles were:

STREET & PARK SKATE



FAV SKATE SPOTS

1. Tree Tops
2. Waitangi Park
3. Wellington Waterfront

WHAT WE WANT TO DO NOW

WORK WITH THE WELLINGTON SKATE COMMUNITY TO:

DEVELOP A SKATE ACTION PLAN THAT COVERS THE KEY THEMES IDENTIFIED INCLUDING FUTURE PROVISION & DESIGN, PROMOTING SKATING AS A POSITIVE ACTIVITY, INCORPORATING SKATE-FRIENDLY DESIGN INTO PUBLIC SPACES AND SUPPORTING ACCESS TO FUNDING



Absolutely Positively Wellington City Council

Me Heke Ki Pōneke