

4.1. 25 The elevation of the inner edge should be equal to the elevation of the runway centre line at the location of the inner edge.

4.1. 26 The slope of the balked landing surface should be measured in the vertical plane containing the centre line of the runway.

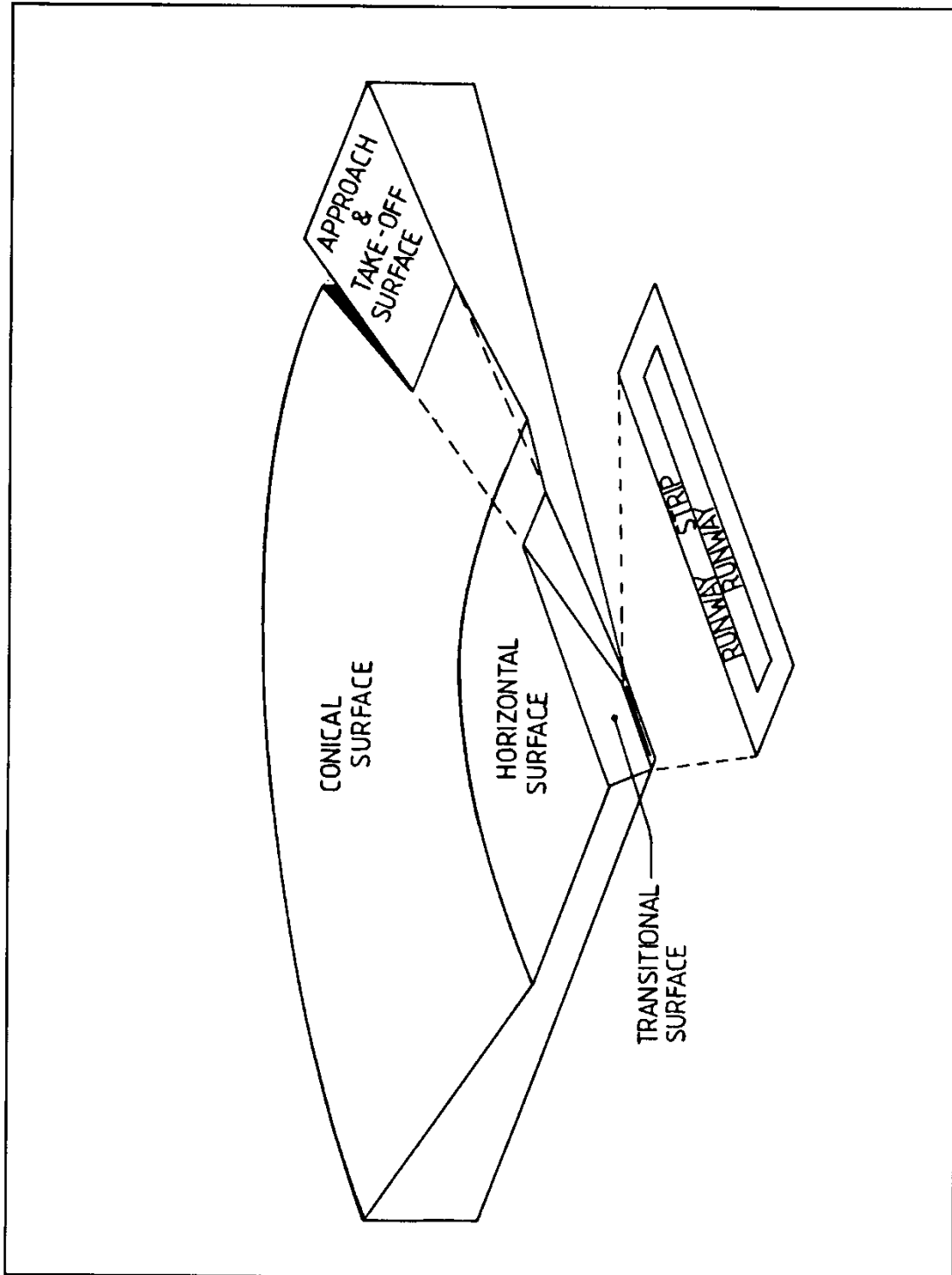


Figure 4-1. Obstacle limitation surfaces

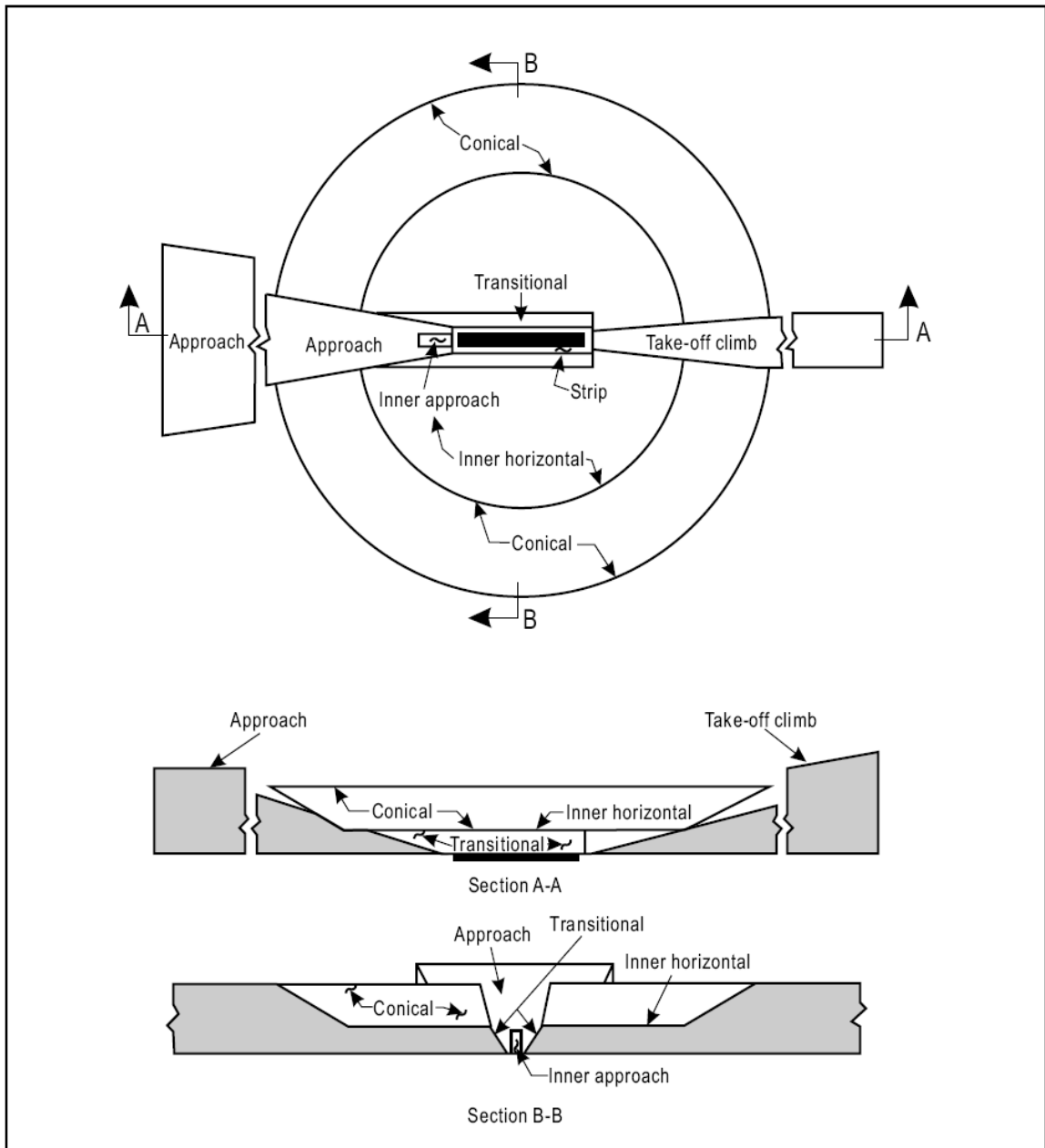


Figure 4-2 Obstacle limitation surfaces

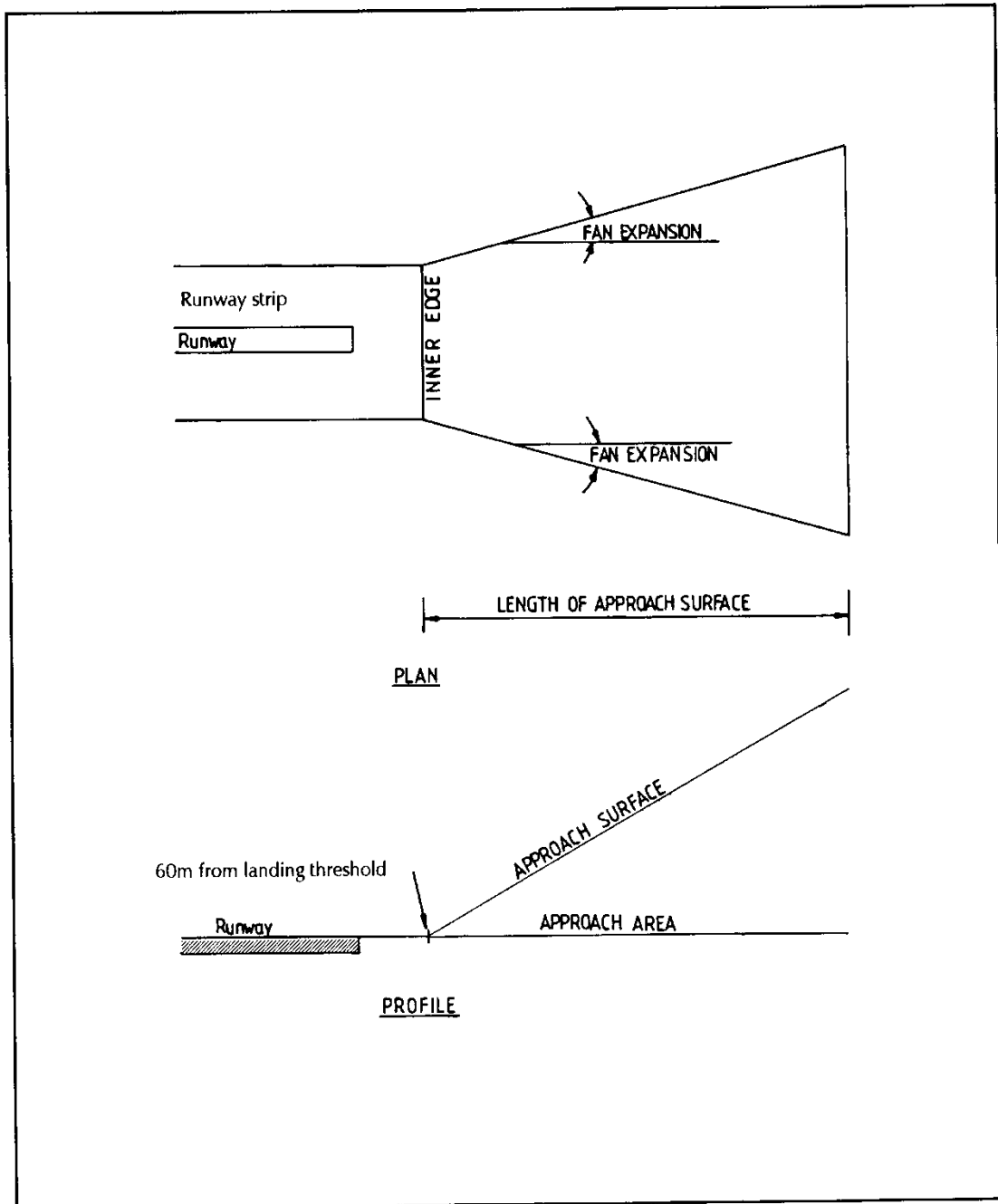


Figure 4-3. Approach area and surface