



# **Tō Tātou Pōneke** Our Wellington

Your free guide to  
life in the capital

Matariki 2024  
16 June–31 August

**Absolutely Positively**  
**Wellington City Council**  
Me Heke Ki Pōneke

# Rārangi upoko Contents

<b>3</b> <b>I te mōhio koe ka taea e koe te...   Did you know you can...</b> Contact details and helpful hints	<b>16</b> <b>Matariki Ahi Kā</b> Free whānau-friendly events	<b>28</b> <b>Mahi toi   Capital arts</b> New exhibitions and public art projects
<b>4</b> <b>Wā tākaro   Playtime</b> The story behind Whetuu Maarama	<b>18</b> <b>Ngā mahi whakangahau Put it on the calendar</b> Council-supported events	<b>30</b> <b>Te Koromatua me ngā Kaikaunihera   The Mayor and Councillors</b> The people who represent you in Wellington
<b>6</b> <b>Ngā pitopito kōrero   News</b> Updates about our city	<b>22</b> <b>Mahi huringa āhuarangi pae matua Climate action capital</b> Climate-positive chipseal	<b>32</b> <b>Ngā hui a te Kaunihera, ngā komiti me ngā poari ā-hapori</b> Council, committee and community board meetings
<b>11</b> <b>Restoring the heart of our capital</b> Progress in Te Ngākau Civic Square	<b>25</b> <b>Tō tātou hapori   Our community</b> Supporting people experiencing homelessness	<b>Cover art:</b> Artist Kohe Webster depicts Puanga, followed by Matariki atop Mounga Taranaki, encircled by Maru, Rongomātane (above), Tangaroa, and Tāne Mahuta (below), representing our gratitude and connection with nature.
<b>12</b> <b>Ō tātou wāhi   Our places</b> Helping people find their way	<b>27</b> <b>Kaupapa Pūtea   Funding</b> Find out how we can help your community project	
<b>14</b> <b>Matariki Puanga</b> Celebrate the Māori New Year		

**For more information about anything in this magazine, visit [wellington.govt.nz](http://wellington.govt.nz)**  
No internet at home? You can phone our Contact Centre any time on **04 499 4444** or use a free internet computer at one of our libraries.

We're proud to use the indigenous language of Aotearoa in our publications. If you come across a word you don't know, there's an easy way to learn what it means - visit [maoridictionary.co.nz](http://maoridictionary.co.nz)  
Learn about local reo Māori dialects with our Mahau app - visit [wellington.govt.nz/mahau](http://wellington.govt.nz/mahau)

**Disclaimer:** We make this magazine to encourage you to get involved in local events, to demonstrate the great work happening in Wellington, and to show you some of the many reasons there are to be proud of your city. Wellington City Council has, to the best of its knowledge, sourced accurate information. We will not be held responsible for any errors, changes in pricing, or misinformation.

**Production:** Wellington City Council Communications and Engagement Team

**Email:** [ourwellington@wcc.govt.nz](mailto:ourwellington@wcc.govt.nz)



This publication uses vegetable-based inks and environmentally responsible paper produced from Forest Stewardship Council® (FSC®) certified, mixed source pulp from responsible sources.



Paper produced using Elemental Chlorine Free (ECF) and manufactured under the strict ISO14001 Environmental Management System.

# Kia ora koutou

Ko te kaupapa o Matariki he whakamaumahara ki ō tātau tīpuna, te hunga e arohatia ana e tātau, me te titiro atu ki ngā rā e tū mai i te wā e whakatata atu ana ki te wā makariri.

I konei i Te Whanganui-a-Tara kei te whakanuia e tātau a Matariki ki te taha moana me ngā whakaaturanga, ngā kai me tētahi tikanga hira i ia pō hei whakamaumahara ki te hunga kua mene ki te pō.

I mua, i taua mutunga wiki hoki ka whakaaturia ētahi whitiāhua poto iwi taketake e whakaari ana i ngā kōrero mō tō tātau moana, ka whakaaturia ki tētahi mata wai.

Kua uru a Te Whanganui-a-Tara ki tētahi wā hurihanga. Kei te tipu haere tō tātau tāone nui, nō reira ka rerekē te āhua me te wairua o te tāone nui i a mātau e whakahaere ana i ēnei mahi.

He nui ngā mahi e haere ana i Te Ngākau hei whakarauora i taua wāhi kia noho anō hei pokapū o te tāone matua.

He nui ngā painga ka puta i tenei ki ngā pakihi, te iwi me ngā kainoho o te takiwā, tae atu ki ngā painga mō te hapori mai i te hokinga atu o ngā mahi ohanga, ngā taiopenga hapori, ā-iwi hoki, ngā puoro me te ahurea, me ngā manuhiri ki te takiwā.

I te wā e haere ana ēnei mahi ko tāku whakahau ki a koutou kia kaha tonu ki te tautoko i ngā pakihi o te takiwā, me te haere atu pea i te taha o te whānau me ngā hoa ki ngā mahi āhuareka.

Kia pai tā koutou Matariki!

Tory Whanau  
**Koromatua**

Laurie Foon  
**Koromatua Tuarua**

Matariki, the Māori New Year, is about remembering our tīpuna, our loved ones who have come before us, and looking into the future as we enter into the colder months.

Here in Te Whanganui-a-Tara we will be celebrating Matariki on the waterfront with performances, kai, and a special ceremony each night to honour those who have left us.

In the lead up and over the long weekend, there will also be a series of indigenous short films showcasing stories of our ocean, projected on a water screen.

Wellington is entering a period of transformational change. Our city is growing and this means that the city will look and feel different to how it usually does while we carry out this important work.

There is lots of movement happening in Te Ngākau Civic Square to revitalise the precinct and make it the heart of the capital again.

This will have significant benefit for businesses, iwi and residents in the area, as well as benefits for the community with economic activity, community and civic events, music and culture, and visitors all returning to the area.

While this work is continuing I encourage you to continue supporting businesses in the area, perhaps joining whānau and friends to make some wonderful Wellington memories.

Happy Matariki everyone!

Tory Whanau  
**Mayor**

Laurie Foon  
**Deputy Mayor**



# Matariki Ahi Kā

Presented by Wellington City Council

**27-30 June**

6pm-9pm, Waterfront

Fire, projections,  
performances, kai



## Mana Moana Pōneke

**Weekends 15-30 June**

6pm-9pm, Whairepo Lagoon

Stories from our ocean, projected on water

**Free  
events**

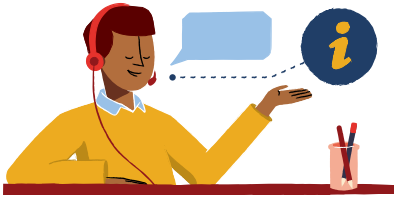
[wellington.govt.nz/matariki](https://wellington.govt.nz/matariki)

MANA  
MOANA

Absolutely Positively  
Wellington City Council  
He Take Kōi Pōneke

# I te mōhio koe ka taea e koe te...

## Did you know you can...






### Contact us any time

Phone: 04 499 4444

Email: [info@wcc.govt.nz](mailto:info@wcc.govt.nz)

### Stay up to date on social media

 [facebook.com/wellingtoncitycouncil](https://facebook.com/wellingtoncitycouncil)

 [wgtnc](https://www.tiktok.com/@wgtnc)  [wgtnc](https://www.instagram.com/wgtnc)  [@WgtnCC](https://twitter.com/WgtnCC)

 [wellingtoncitycouncil](https://www.linkedin.com/company/wellingtoncitycouncil)

### Keep up to date with our e-newsletters

We send out newsletters on a range of topics, from news about our recreation sector, to what's happening in the arts and at libraries, to a weekly guide to life in the capital. Subscribe online.

[wcl.govt.nz/enewsletters](https://wcl.govt.nz/enewsletters)



### Sort out your garden with Capital Compost

We sell compost and all sorts of other garden products like mulch and garden mix at the Tip Shop. We make the compost out of the city's garden waste. You can buy a bag, or in bulk, and we can deliver bulk orders.

[wcl.govt.nz/capitalcompost](https://wcl.govt.nz/capitalcompost)

### Tell us when something needs fixing

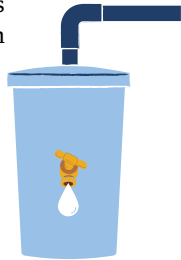
If you see Council property that needs fixing - such as a streetlight, leaking pipe, or public toilet - you can report it online or call us on 04 499 4444.

[wcl.govt.nz/fixit](https://wcl.govt.nz/fixit)

### Purchase water tanks from the Tip Shop

You can buy 200-litre water tanks from our Tip Shop at the Southern Landfill at a discounted price. Tanks can be used to collect rainwater in an emergency, or act as a back-up water supply during drought.

[wcl.govt.nz/tipshop](https://wcl.govt.nz/tipshop)



### Access eMedia with your library card

You can access eBooks, eMagazines, eNewspapers, films to stream, and more with your Wellington City Libraries card. Check out [wcl.govt.nz/elibrary](https://wcl.govt.nz/elibrary) for over 60 premium resources. Not a member of our libraries yet? Visit [wcl.govt.nz/join](https://wcl.govt.nz/join)



### Check out Our Wellington online

Wondering what's going on in the city? Find out through the Our Wellington news channel. It's full of the latest info and stories about our people, our places, our friends and our city.

[wcl.govt.nz/ourwellington](https://wcl.govt.nz/ourwellington)



The story behind

# Whetuu

**Rising up out of the water and onto the land is Whetuu Maarama, the new waka at the upgraded Te Aro Mahana play area in Frank Kitts Park.**

Designed by artist Matthew McIntyre-Wilson (Taranaki, Ngā Māhanga and Titahi), the waka is a new and unique piece of the play area - the first of its kind on the waterfront in Pōneke.

With a background in jewellery making, traditional weaving and object-making with raranga (plaiting) and whatu (threading) patterns, Matthew says he was brought on board to work alongside the Council and Taranaki Whānui ki Te Upoko o Te Ika to develop the waka and tell the stories of the area.

“The placement of the waka suggests that it was brought out of the water and onto the land. This is emphasised by the rocks at the entrance to the playground, suggesting that it’s a Tauranga waka. The shores were once lined with waka of all kinds.”

With the waka sitting close to the water at the entrance to the playground, he landed on the design of a waka tētē, which is known as a fishing canoe. The name of the play area itself, Te Aro Mahana, speaks to past voyages of boats finding their future and the historical Te Aro Pā site.

# Maarama

Not only does the waka tētē connect the playground to the land, but Matthew has used the traditional elements of the waka to tell the love story of stars.

“It shows the celestial partnership between Rehua as the summer star and Puanga as the winter star. The relationship brought them their child Puawānanga, known as the flowers of the spring that cover the forest canopy and drop white flowers to the ground.





“Puanga can be seen on the taurapa (stern of the boat) and Rehua on the tauihu (bow of the waka) with Puawānanga depicted in the hull of the waka, there are petals on the ground, and this shows the love between stars and te taiao (the environment).”

The waka tētē also connects to a key piece of playground equipment - the hīnaki, a giant climbing net for tamariki. This ties into the play-matting designed by Matthew for the playground, which includes imagery of tuna swimming in and out of the hīnaki.

While this is the first waka in a play area on the waterfront, Matthew hopes that this is the start of many more popping up across Pōneke.

“I want kids to try paddling in the waka, climb in and out, and jump off it! Whatever they want to do is the right thing!

“That’s the idea of the waka - tamariki can learn about the different elements and make those connections in the future.”



## Top Matariki stargazing spots



Matariki is a special time in the Māori calendar which celebrates the beginning of a new year. Our amazing city has many stargazing vantage points to climb! We encourage you to plan ahead and set your alarm clock early to catch the Matariki cluster at dawn. It may take a few tries to see the stars so don't be disheartened if you don't spot them first time around!

### **James Stellan Memorial Park**

In Northland on Te Ahumairangi Hill, James Stellan Memorial Park has stunning 180-degree views over the city to the harbour as well as neat night sky viewing opportunities.

### **Homebush Park**

Located on Homebush Road in Khandallah, this hidden playground down a gravel track has breathtaking views over Wellington harbour and the wide-open skies above.

### **Tawatawa Reserve**

A large, flat dog-friendly area located on Quebec Street, between the suburbs of Ōwhiro Bay, Kingston, and Island Bay.

### **Ataturk Memorial Park**

The Ataturk Memorial Park lookout can be accessed from the Tarakena Bay car park on Breaker Bay Road.

### **Waihinahina Park**

Located on Ladbroke Drive in Newlands, Waihinahina Park is an open-grassed area surrounded with regenerating bush - an ideal spot for stargazing Matariki on a clear night!

## See you online: final Our Wellington print edition

The 2024 winter edition will be the last to hit your mailbox.

The seasonal brochure was launched in spring 2014 as a free insider's guide to life in the capital - a one stop shop with information about the Council's services, events we support, the city's public spaces and places, free activities, and important news for residents.

We hope you continue to check out the fantastic events, services, and facilities on offer by subscribing to our newsletter, visiting our website or following us on social media.

While you may no longer receive a physical magazine in your letterbox, you can keep up to date with life in the capital by:

- Subscribing to our weekly e-newsletter, This Week in Our Wellington, at [wellington.govt.nz/enewsletters](https://wellington.govt.nz/enewsletters)
- Checking out the latest news on Our Wellington online [wellington.govt.nz/ourwellington](https://wellington.govt.nz/ourwellington)
- Checking out city events at [wellington.govt.nz/events](https://wellington.govt.nz/events)
- Following us on social media [facebook.com/wellingtoncitycouncil](https://facebook.com/wellingtoncitycouncil)

Ngā mihi nui.



The proposal to stop the quarterly Our Wellington brochure was one of many to be put forward as part of our 2024-34 Long-term Plan, to reduce pressure on rates as the city's costs increase and we face major financial challenges.

We'll continue to look at how we can deliver our services in innovative ways that meet the changing needs of our community.

Find out more about our 2024-34 Long-term Plan at [wcc.nz/ltp-2024-34](https://wcc.nz/ltp-2024-34)





## Major transport projects coming in-house

We're taking the lead on some projects that were formerly part of Let's Get Wellington Moving - a partnership between Waka Kotahi NZ Transport Agency, Greater Wellington Regional Council, and Wellington City Council. That programme was dissolved in early 2024, but we continue to face transport challenges and need to keep working toward moving more people more efficiently.

We're continuing work on the Golden Mile strip from Courtenay Place, and then along Willis and Manners Streets to the

Parliament end of Lambton Quay; and the commuter route along Thorndon Quay from Bunny Street to the Aotea Quay overbridge at 87 Hutt Road.

Due to budget constraints, we're proposing not to continue with improvements to Hutt Road from the Aotea Quay overbridge to the Jarden Mile intersection. The Mayor and Councillors will decide that as part of our 10-year Long-term Plan process.

Visit [letstalk.wellington.govt.nz/golden-mile](https://letstalk.wellington.govt.nz/golden-mile) and [transportprojects.org.nz/thorndon-quay](https://transportprojects.org.nz/thorndon-quay)

## New central city hub for recycling and pre-loved goods

We know it's hard to get to the Tip Shop at the Southern Landfill without a car, so we're setting up a new space in town. From June, you'll be able to drop off items you don't need but could be reused, buy second hand goods, and recycle at Te Aro Zero Waste.

A partnership between the Council and the Sustainability Trust, the centre will be based in the Trust's building at 2 Forresters Lane, Te Aro. Keep an eye on our website and social media channels for more information.



# MAKE A BIGGER MEMORY

BOOK AN INCREDIBLE EXPERIENCE TODAY

WELLINGTON

**ZOO**

For more info or to book, please visit  
[wellingtonzoo.com/close-encounters](http://wellingtonzoo.com/close-encounters)

**CLOSE ENCOUNTERS**  
**EXPERIENCE INCREDIBLE**



## Fun facts about our Central Library

We are strengthening and modernising Te Matapihi ki te Ao Nui, our Central Library, with the project tracking on time and within budget. Here are seven fun facts.

- Te Matapihi ki te Ao Nui translates to ‘The Window to the Wider World’.
- The building will be 17,000 sqm, from the basement to level four.
- All 49 piles (that went down as far as 21 metres before they hit rock) have been installed, as have the first base isolators.
- Te Matapihi will aim to be a New Zealand Green Building Council five-star-rated building. This will help towards the goal of making Wellington a zero-carbon city (net zero emissions) by 2050.
- Through a co-design relationship with Taranaki Whānui, the Council is reimagining Te Matapihi. Design elements will investigate the intersection between traditional libraries, information services, and the unique environmental origins of Pōneke.
- The building will have four entrances, with three at ground level, and a cafe connected to Te Ngākau Civic Square.
- Te Matapihi will provide innovatively designed facilities, balancing space for relaxation, reading, study, learning, and knowledge exploration, alongside our city’s treasures and collections.

When it re-opens in early 2026, Te Matapihi will once again be an integral part of the beating heart of our capital city.

## Te Tai Ohinga Youth Hub

In winter, Te Tai Ohinga - our brand new hub for young people - will officially open its doors. The name Te Tai Ohinga was gifted by Kura Moeahu, Chairman of Te Rūnanganui o Te Ati Awa, who has been supporting the Council to better understand the history and narratives of Pōneke.

‘Te Tai’ refers to the tides of the sea, and ‘Ohinga’ is a word referencing young people that derives from Taranaki. It speaks to the opportunity for rangatahi in Pōneke to make a resurgence now that a safe space has been created for them.

The hub will be located on Willis Street and has been designed with input from Youth Council as well as a number of local young people and youth organisations. The Council held workshops with young people to understand what they wanted the space to look and feel like, incorporating their feedback into the architect’s designs.

Operated by our partners The Y, rangitahi will be able to hang out, share kai, learn new skills, study, hold events, and much more. A variety of murals and artworks designed by, or with, young people will also be showcased in the hub. Keep an eye out for the official Te Tai Ohinga launch!

# WHERE WILD MEETS CHILD

---

## KIDS' NIGHT WALKS



**ZEALANDIA™**  
TE MĀRA A TĀNE

[VISITZEALANDIA.COM/KNW](http://VISITZEALANDIA.COM/KNW)

EXPLORE ZEALANDIA BY TORCHLIGHT AND  
WITNESS THE WILDLIFE THAT ONLY COMES  
OUT AT NIGHT - SUITABLE FOR KIDS AGED 5+

**LIMITED SPACES - BOOK NOW!**

# Restoring the heart of our capital city? Absolutely



We're making good progress on multiple projects that will enhance the resilience of Te Ngākau Civic Square and restore it to its place as the civic and cultural heart of the city.

## **CAB and MOB site redevelopment**

The exciting future of Te Ngākau Civic Square continues to take shape with the announcement in April that the Council has selected Precinct Properties as its preferred developer for the Civic Administration Building (CAB) and Municipal Office Building (MOB) sites in Te Ngākau Civic Square.

Once CAB is demolished by the end of 2024 and MOB by the end of 2025, development of a new building can proceed on the two empty sites.

The new five-star green building will activate Te Ngākau by enabling a range of around-the-clock activity including retail, hospitality, co-working and office space, alongside civic and cultural spaces. It will also provide the front-of-house functions for the Town Hall and any national music centre requirements, while adding to the green space in Te Ngākau.

## **Other works happening in Te Ngākau**

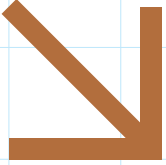
The CAB and MOB site redevelopment adds to the programme of work underway across Te Ngākau Civic Square precinct. Te Matapihi Central Library and Town Hall projects remain within the budgets approved by the Council, with the library on track to be completed by the end of 2025 and opened early 2026, and the Town Hall completed in 2027.

A master development plan for the precinct is also underway, with a draft plan due to be completed soon. This plan will inform the CAB and MOB redevelopment, with close collaboration between the teams working on each project.

For the latest updates, visit [wellington.govt.nz/te-ngakau](https://wellington.govt.nz/te-ngakau)

**Positively  
Pōneke**

# Ō tātou wāhi Our places



# Helping people find their way

He is Wellington City Council's wayfinding design specialist, meaning he creates the public signage that helps people navigate spaces and places within Pōneke.

“Wayfinding is about understanding how people use spaces around the city and guiding them through a physical environment. It's important to offer visitors a welcoming, positive and informative visitor experience.”

A member of the Council's Creative and Brand team, Darren's main focuses are public parks, car parks and Council facilities, like libraries and pools.

“There's wayfinding signage everywhere and I think many people take it for granted as part of everyday life. It's always in the background until you are looking for it.”

**Darren Switalla puts himself in other people's shoes to help Wellington's residents and visitors find their way around the city.**

So, what does wayfinding entail?

After getting familiar with a space and mapping out potential sign locations, Darren will design a sign family. These are made up of various types of signs, including the site name, directional signs that lead people to various locations, information signs that offer details about the place and services, identification signs that label particular areas, and regulatory signs that communicate behaviour change to set expectations and keep people safe.

Darren says a lot of thinking goes into the process.



Darren at Tākina



Ākau Tangi toilets

“We test for accessibility, looking at type sizes, colour and contrast, and considerations around those with no or low vision. It can be high stress too because we want to make things that last a long time and ensure the money that’s spent creating those signs and systems are good value over the long term.”

A graphic designer with the Council for 17 years, Darren says he enjoys putting himself in other people’s shoes and it’s been inspiring witnessing the change in the design approach over time.

“When I first started it was almost cookie-cutter design, but as design has evolved it’s now more user-centred - thinking about the city and the people in it.”

He says the importance of good wayfinding can be underestimated.

“The fear of being lost is real, especially with tourists. A parent could urgently be looking for a changing room and be unable to find one, or a lack of signage could cause someone to run late for an urgent appointment.

“Wherever I go, I am always observing what’s around and what’s not.

“Being in a position of creating those systems, I’m always learning out in the world when it comes to signage.”

A recent example was a family trip to Japan, where Darren says they got “terribly lost” while navigating through a train station by following directional arrows that led to a dead end.

“In a foreign country, that can be nerve-racking. When the signage fails to work it can lead to confusion and second guessing.”

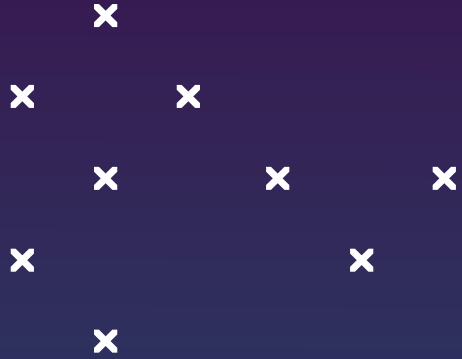
A keen surfer and free-diver and originally from Christchurch, Darren loves the south coast, the compact nature of Wellington city and its surrounding hills.

Work he is most proud of includes the wayfinding signage at both Tākina, and Ākau Tangi Sports Centre in Kilbirnie.

The father of two says it’s a privilege championing te reo Māori with bilingual signage, which he believes “is adding a lovely fabric to the community”.

“Often signage is part of the first impression. It’s the first exposure before entering a building, so it’s important to develop a solution that is inclusive and friendly when welcoming people into our spaces.”

# Matariki Puanga



The celebration of Matariki, the Māori New Year, dates back over 700 years and is accompanied by long-established traditions.



In Te Upoko o Te Ika (Wellington region), some mana whenua celebrate not just the rising of Matariki, but also Puanga.

Puanga is a single whetū (star). It's not part of the Matariki cluster but appears in the evening sky shortly before Matariki rises each year. Puanga rises higher in the sky than Matariki so it's recognised by iwi and hapū that can't see Matariki from their location. Traditionally, the brightness and clarity of the stars was an indicator of how abundant the harvest would be in the coming year.

“Puanga is the star that Te Āti Awa acknowledge, given that our location to place and space characterises how we see the universe from our marae, parks, and islands.

“Living directly under our maunga, Puanga is more visible to our world and our way of being,” says Kura Moeahu, Chair Te Rūnanganui o Te Āti Awa ki Te Upoko o Te Ika a Māui.

Matariki Puanga celebrates our unique location in Te Upoko o Te Ika. The shape of the landscape means that in some areas only Puanga can be seen, like in Waiwhetū in Lower Hutt, home to Te Āti Awa ki Te Upoko o Te Ika a Māui. But on the west coast in Porirua, within the boundaries of Ngāti Toa, Matariki is clearly visible. And being a region surrounded by hills and mountain ranges, there are many vantage points where both are visible - here in Te Upoko o Te Ika we have something special!



# Puanga and the nine stars of Matariki

Learn more about what each star represents.



## Ururangi (Merope)

This whetū encourages us to get to know te whānau pūhi (the wind family) - Hauraro (north wind), Tonga (south wind), Hauāuru (west wind), Marangai (east wind) - to embrace its strength and prepare for any challenges it creates.

## Waipuna-ā-rangi (Electra)

To reflect about climate change, and what we can do today to lessen the problem, we look to Waipuna-ā-rangi (Electra). She welcomes the winter sky waters in all their forms - ua (rain), ua nganga (hail), and hukarere (snow).

## Waiti (Maia)

This star watches over our freshwater environments - our awa (rivers), roto (lakes), kūkūwai (wetlands), and waipuna (springs).

## Tupu-ā-nuku (Pleione)

This star encourages us to consider more carefully what we are putting into Papatūānuku (the earth), and in what quantities. Tupu-ā-nuku (Pleione) has a special interest in our edible plants. This includes the natives pūhā (sowthistle), kawakawa (pepper tree), kokihi (NZ spinach), and tī kōuka (cabbage tree).

## Hiwa-i-te-rangi/Hiwa (Celaeno)

This wishing star is the youngest star. She helps us to recognise our hopes, dreams and aspirations for the coming year.

## Tupu-ā-rangi (Atlas)

This whetū has long looked out for the ngahere (forests) and our native wildlife - manu (birds), bats, mokomoko (lizards), and ngārara (bugs) - that are being ravaged by introduced pests and predators, along with our ancient rākau (trees). Tupu-ā-rangi encourages us to take action to help to bring our forests back to life again.

## Waitā (Taygeta)

Biodiversity is essential to our world and Waitā (Taygeta) surveys our vast oceans, Te Moana-nui-o-Kiwa (the Pacific Ocean) and Te Tai-o-Rehua (the Tasman Sea). Our actions need to support and enhance it.

## Matariki (Alycyone)

The mother of the stars in the constellation, Matariki gathers the people together, and connects them with our environment. She inspires people to do the same.

## Pōhutukawa (Sterope/Asterope)

We are encouraged to take the time to treasure the people who have passed on through Pōhutukawa, and to hold tight to our memories of them and acknowledge their impact on our lives.

## Puanga (Rigel)

The herald of Matariki, Puanga is a time to wānanga, to restore faith and hope for the future, a time for whanaungatanga, to be with others, share stories and kai, and celebrate who we are.

# Matariki Ahi Kā

Thursday 27–Sunday 30 June | Wellington waterfront

Nau mai, haere mai.  
Wellington City Council  
invites you to celebrate  
the Māori New Year in a  
uniquely Wellington way.

Enjoy a spectacular, free, whānau-friendly  
experience with our Matariki Ahi Kā and  
Mana Moana Pōneke events.

Matariki and Puanga are a time for  
remembering the past, celebrating the  
present, and looking to a sustainable  
future for generations to come. Honour  
Aotearoa New Zealand's culture and  
history with a magnificent immersive  
Wellington waterfront walk-through  
journey including fire, large-scale  
projections, and performances. This year,  
journey through our past, present, and  
future spaces and share kai each evening  
at the Odlins Plaza kai court, while  
enjoying the ambience with live music  
on the Aroha Stage.

In the lead-up to Ahi Kā and during the  
long weekend, enjoy Mana Moana Pōneke  
– a series of indigenous short films about  
our ocean, projected on a water screen  
in Whairepo Lagoon. Watch as millions  
of water droplets fall and catch the light,  
creating the illusion of images appearing  
from the darkness and floating on the water.  
Mana Moana Pōneke is a collaboration  
between Māori and Pasifika musicians,  
artists, writers, and choreographers.

## Honouring those who have passed away

Join us at the *Pōhutukawa and Hiwa-i-te-rangi* ceremony, starting at the Memorial Wall at 7.45pm each evening, moving along the Te Papa Promenade to Whairepo Lagoon, where we will honour those who have passed away since last Matariki and express our hopes for the future. You will have the opportunity to place the name of your loved one, and your hopes for the year ahead in the baskets located at the Memorial Wall and Whairepo Lagoon before 7.30pm each evening, ahead of the ceremony.

Nō Rua, nō Mango, nō runga i te rangi (Storybox), photography by Jeff McEwan.



## Matariki Ahi Kā

6pm–9pm, Thursday 27–Sunday 30 June  
Wellington waterfront

Fire, projections, performances,  
a ceremony at 7.45pm to honour those  
who have passed away and to express  
hopes for the future, and kai.



## Mana Moana Pōneke

6pm–9pm, weekends 15–30 June  
Whairepo Lagoon

Stories from our ocean,  
projected on water.



For more information and programme  
details, visit [wellington.govt.nz/matariki](https://wellington.govt.nz/matariki)

*Matariki Ahi Kā is always a well-attended  
event. Please be mindful of others and  
keep an eye on your tamariki. Some of  
the projections run on a three-year cycle,  
but there will always be something new  
to experience at this special event.*



Jamie McCaskill performing at Matariki Ahi Kā 2023

# Ngā mahi whakangahau

## Put it on the calendar

Check out some of the events the Council is supporting over the winter months. For more info, visit [wellington.govt.nz/events](https://www.wellington.govt.nz/events)

### Wellington Saints vs Franklin Bulls

6.30pm, Sun 16 Jun | TSB Bank Arena

[saints.co.nz](https://www.saints.co.nz)

### Sci-Fi Sundays: The Dark Crystal

6pm, Sun 16 Jun | Space Place

Experience the magic of Jim Henson's 1982 fantasy epic in Space Place's planetarium. [spaceplace.nz](https://www.spaceplace.nz)

### Rongoā Ti Party

10am-12pm, Sun 16 Jun

Nairn Street Cottage

Join Kere Arapata for a kapu ti and a kōrero about rongoā Māori at Nairn Street Cottage. [nairnstcottage.nz](https://www.nairnstcottage.nz)

### Matariki with Wellington Gardens ✕✕

Mon 17-Fri 21 Jun | Otāri-Wilton's Bush & Wellington Botanic Garden ki Paekākā

Keep an eye out for events at our gardens, with rāranga wānanga, titiwai hikoi and more. Book today. [wellingtongardens.nz/matariki](https://www.wellingtongardens.nz/matariki)

### Doctor Who: Worlds of Wonder

Until 28 Oct | Tākina

Explore the science behind the global hit series - unravelling the mystery of why the TARDIS is bigger on the inside. [wellingtonnz.com/doctor-who](https://www.wellingtonnz.com/doctor-who)

### Mānawatia-a-Matariki ✕✕

5am-7am, Tue 18 Jun | Space Place

Celebrate Puanga ki Matariki with a special planetarium show, kai, and early-morning stargazing (weather permitting). [spaceplace.nz](https://www.spaceplace.nz)

### Lōemis

Until Fri 27 Jun

Explore the unfamiliar with music, film, installations, workshops, a giant hybrid art market, hearty food offerings, and a wolf-infused Friday night winter solstice celebration. [loemis.nz](https://www.loemis.nz)

### Gazley Volkswagen Wellington Marathon

Sun 23 Jun | Sky Stadium

The capital city's favourite footrace for all ages and abilities with a full marathon, half marathon, 10km, and Kids' Magic Mile. [wellingtonmarathon.co.nz](https://www.wellingtonmarathon.co.nz)

### Topsy Turvy

From Mon 24 Jun | Nōku te Ao Capital E

Step into a world of illusion and surprise at the latest play activation for kids under five. [capitale.org.nz](https://www.capitale.org.nz)



Gazley Volkswagen Wellington Marathon

## **Puanga Matariki ki**

### **Te Māra a Tāne**

Jun-Jul | Zealandia

Celebrate Puanga and Matariki and look to the future with interactive performances, hands-on crafts, and self-led activities. [visitzealandia.com/events](https://www.visitzealandia.com/events)

---



## **Tree of Remembrance**

Until Sun 30 Jun | Nairn Street Cottage

Matariki is a time to remember loved ones who have passed. Attach messages for friends and whānau to the beautiful Tree of Remembrance. [nairnstcottage.nz](https://www.nairnstcottage.nz)

---



## **Astronomy on Tap**

8pm-10pm, Tue 25 Jun | Space Place

Sit back and relax in our full-dome digital planetarium. [spaceplace.nz](https://www.spaceplace.nz)

---



## **Matariki at the Museum**

10am-5pm, until Mon 1 Jul

Wellington Museum

Visit for a drop-in pōhutukawa star craft session. [wellingtonmuseum.nz](https://www.wellingtonmuseum.nz)

---



## **Age Concern: Tea & Tech**

10am-2.30pm, Wed 26 Jun

Linden Community Hall

Baffled by technology? Come to our free workshop and bring your digital device. [acwellington.org.nz/events](https://www.acwellington.org.nz/events)

---

## **Hākari Under the Stars**

5pm-9pm, Thu 27 Jun | Space Place

Our Matariki celebration returns with performances from Te Kura Huia and Casual Healing, star talks, tamariki activities and kai. [spaceplace.nz](https://www.spaceplace.nz)

---



## **Wellington Saints vs Whai**

7.30pm, Wed 3 Jul | TSB Bank Arena

[saints.co.nz](https://www.saints.co.nz)

---

## **Doc Edge Festival 2024**

Wed 3-Sun 14 Jul | The Roxy Cinema

and Te Auaha

Documentary screenings and immersive experiences in Wellington. [docedge.nz](https://www.docedge.nz)

---

## **Glow in the Dark Titiwai Tours**

7pm & 8pm, Fri 5 Jul & 2 Aug

Botanic Garden ki Paekākā

Join the fascinating tour into the world of titiwai, New Zealand's glow worms! [wellingtongardens.nz](https://www.wellingtongardens.nz)

---

## **Wellington Saints vs Otago Nuggets**

4pm, Sat 29 Jun | TSB Bank Arena

[saints.co.nz](https://www.saints.co.nz)

---

## **Matariki Moves**

10am-12pm, Sun 30 Jun

Nōku te Ao Capital E

Put on your party outfit and kanikani to celebrate Matariki! [capitale.org.nz](https://www.capitale.org.nz)

---



## **Music at the Begonia House**

11am-12noon, Sun 7 Jul & 4 Aug

Botanic Garden ki Paekākā | Free

Join the Friends of Wellington Botanic Garden for music in the Begonia House Foyer. [wellingtongardens.nz](https://www.wellingtongardens.nz)

**REVEL**

7.30pm, Sat 13 Jul | Hannah Playhouse

World class cabaret acts, live music and bespoke cocktails come together.

[invertedcitizens.com/revel](http://invertedcitizens.com/revel)

**Wellington Saints vs Southland Sharks**

3pm, Sun 14 Jul | TSB Bank Arena

[saints.co.nz](http://saints.co.nz)

**Festival for the Future**

Wed 17–Thu 18 Jul | TSB Bank Arena

The largest leadership and innovation summit in Aotearoa, where ideas meet action and impact. [festivalforthefuture.co](http://festivalforthefuture.co)

**Te Wānanga O Raukawa Pulse vs Mainland Tactix**

7.30pm, Mon 22 Jul | TSB Bank Arena

[pulse.org.nz](http://pulse.org.nz)

**Whānau Mārama: New Zealand International Film Festival**

Wed 31 Jul–Sun 11 Aug | The Embassy, Roxy Cinema, and Light House Cinema Cuba

Whānau Mārama will bring audiences the best of cinema from around the globe and Aotearoa. [nziff.co.nz](http://nziff.co.nz)

**AHO HONONGA**

28 June - 09 August 2024  
61 abel smith st, te aro

**toi pōneke** 10am - 4pm weekends  
10am - 8pm weekdays

**Absolutely Positively Wellington City Council**  
Me Heke Ki Pōneke



Beervana

**Photobook NZ**

10am-3pm, Sat 10 Aug | Te Papa | Free

New Zealand's national photobook fair and festival. [photobooknz.com](http://photobooknz.com)

**Visa Wellington On a Plate**

Thu 1-Sat 31 Aug

The largest culinary festival in Aotearoa takes over the capital for the month with local restaurants delivering a delicious line-up of ticketed and non-ticketed events and of course... burgers. Visa pre-sale starts on 17 June. [visawoap.com](http://visawoap.com)

**Beervana**

Fri 23 & Sat 24 Aug | Sky Stadium

Expand your mind and step into a beer wonderland. There'll be an all new line-up of beers, brewers, and bites to immerse yourself in at New Zealand's ultimate celebration of good beer. [beervana.co.nz](http://beervana.co.nz)

**Celebrate young artists**

10am-1pm, Sun 25 Aug

Inverlochy Art School

Workshops and art talks for Wellington students aged 12-18. [inverlochy.org.nz](http://inverlochy.org.nz)

**Where wild meets child**

Until Sep | Zealandia

Explore Zealandia by torchlight on a Kids' Night Walk, designed for kids under 12 to discover creatures that only come out at night! [visitzealandia.com/kidsnightwalks](http://visitzealandia.com/kidsnightwalks)

**XYZZY**

Tue, Fri & Sat nights | Space Place

Sit back as the dome theatre envelops you in a psychedelic journey. [spaceplace.nz](http://spaceplace.nz)

**Wellington Museum**

**Low Sensory Hour**

4pm-5pm, first Thu of every month

Wellington Museum

Featuring low light and sound throughout the museum. [wellingtonmuseum.nz](http://wellingtonmuseum.nz)

**Nairn Street Cottage Tour**

12pm-4pm, weekends | Nairn Street Cottage

Gain a fresh perspective on Pōneke past with an interactive tour of one of Wellington's oldest homes. [nairnstcottage.nz](http://nairnstcottage.nz)

**Te Wā o te Kōanga - Spring Festival 2024**

Sep | Various locations

Join Wellington Gardens for a series of springtime events. Programme to be announced on 1 August.

[wellingtongardens.nz](http://wellingtongardens.nz)

See full details of our Matariki Ahi Kā (27-30 June) and Mana Moana Pōneke (weekends 15-30 June) events on **pg 16**.



**Mahi huringa āhuarangi pae matua**  
Climate action capital

# **Paving the way** with climate-positive chipseal





After years of trials and development, Wellington City Council is paving the way with a new approach to roading materials that have less of a bad rep with residents and significantly reduces environmental impacts.

Wellington is “leading the pack” in moving from traditional kerosene-based bitumen (asphalt) to an emulsified (water-based) version, says roading engineer Renier Ackerman.

It’s a move that has multiple benefits - environmental, safety, and savings.

“In the past we used ‘cutback’ bitumen in the chipseals. The main additive was kerosene which helped with the workability of the chipseal, and delayed curing times in the colder, unpredictable weather of Wellington.”

Using kerosene meant the chipseal couldn’t get to full strength for years after it was applied, so small stones would continue to flick up and scatter, and the bitumen could sometimes get ‘sticky’ in hot weather.

This and other issues gave the old chipseal a bad reputation with Wellingtonians, so the roading crew knew they had to take a different approach, making it better for both the community and environment.

They replaced kerosene and all other additives with water, which leaves behind only clean bitumen on the road once the water evaporates afterwards. This increased the strength and durability of the chipseals.

The crew also added polymer, a type of rubber that further increased the strength and durability of the chipseals, saved ratepayer money when used instead of expensive asphalt.

The environmental benefits are plentiful, halving Council’s chipsealing carbon emissions.

There are practical benefits for the chipseal crew too, as this new approach enhances their safety on the job, says Renier.

“Cutback bitumen was volatile and needed heating past 160 degrees celsius to be used, so severe burns would result if people got into contact with it. Emulsions can be used at a much safer 80 degrees celsius.”

Two years on, the roading crew has switched over completely to this way of working.

“We don’t apply any cutbacks on our roading network anymore. Waka Kotahi has only recently followed suit, so we are well ahead of the pack on this.”

Find out more about bitumen emulsion [roads.science.co.nz/bitumen-emulsion-and-carbon-emission](https://roads.science.co.nz/bitumen-emulsion-and-carbon-emission)



**PlayHQ | 4 Queens Wharf**  
Monday-Saturday | 9.30am-3.30pm  
[capitale.org.nz](http://capitale.org.nz)

PART OF  
**Wheako Pōneke**  
Experiences Wellington

PRINCIPAL FUNDERS  
**Absolutely Positively Wellington City Council**  
No. 1016167

# Tō tātou hapori Our community

## Supporting people experiencing homelessness

With the cold winter weather here, we know Wellingtonians worry more about the people across our city who don't have warm, secure housing.

Homelessness is a complex, multifaceted issue that doesn't have a quick fix. It is a symptom of wide-ranging systemic issues, and people experiencing homelessness often have unmet housing and health needs.

Wellington has a robust support system for people experiencing homelessness. Hot meals, grocery packs, counselling, and health services are available each day.

The Council supports non-government organisations to deliver these specialist services and programmes, and our funding is making a difference.

Over the last five years, we have provided \$6.1 million worth of funding towards the response to homelessness. The social return on that investment is \$3.10 per \$1.00 spent on homelessness support services, and \$5.40 per \$1.00 spent on outreach services.



And there are also new homes opening, helping to strengthen our social infrastructure. This includes a new 75-unit development on Frederick Street, 80 new apartments at Te Ō on Rolleston Street and 18 beds at the residential alcohol harm reduction facility Te Pā Maru on Taranaki Street, which have opened in the first half of 2024. All sites provide wrap-around support services for tenants provided by agencies.

The agencies helping our whai ora also rely heavily on donations. So, this winter we're asking Wellingtonians to think about donating straight to those organisations rather than directly giving to those asking for money on the street.

If you're worried about someone who is begging or sleeping rough, please phone Wellington City Council's contact centre on 04 499 44 44 or log it through FixIT, and we'll pass the report on to someone who can help.

# XYZZY

A new planetarium experience by  
**Jess Johnson + Simon Ward**

On now

Tickets at [spaceplace.nz](https://spaceplace.nz)

Space Place 



XYZZY BY JESS JOHNSON AND SIMON WARD

MUSIC BY ANDREW CLARKE, STEF ANIMAL, LUKE POWELL, LACHLAN ANDERSON  
SOUND DESIGN BY LACHLAN ANDERSON, SOUND MIX BY GRAHAM KENNEDY  
CO-COMMISSIONED BY TŪHURA OTAGO MUSEUM AND NOW OR NEVER FESTIVAL

PART OF



PRINCIPAL FUNDER



CO-COMMISSIONED BY



# Kaupapa Pūtea Funding

We have a range of funds available for community groups and projects to help make our city a better place.

Contact our funding team to talk through your idea for a project and check our website for more information on the funds including eligibility and closing dates. Visit [wellington.govt.nz/funding](https://www.wellington.govt.nz/funding)

## **Arts and Culture Fund**

Supports arts and cultural projects in the city that help deliver our Aho Tini outcomes: Aho Tangata (Our people), Aho Hononga (Partnership with Māori), Aho Whenua (Our places) and Aho Mahi (Pathways).

## **Creative Communities Scheme Fund**

For groups and individuals with projects that encourage participation in the arts, that reflect the diverse artistic cultural traditions of local communities. There is additional funding available to establish festivals that celebrate life experiences, stories and cultures.

## **Betty Campbell Accommodation Assistance Fund**

Do you work with a not-for-profit community group that delivers services to promote social wellbeing for Wellingtonians? This grant can help with rental costs for office space.

## **Climate and Sustainability Fund**

Supports community groups, businesses, schools, and Māori entities to undertake climate action initiatives in Wellington.

## **Natural Environment Fund**

Supports projects and activities that protect the city's indigenous biodiversity, restore ecosystems, and connect people to nature.

## **Social and Recreation Fund**

Supports community projects which make the city safer, more resilient and connected.

## **Waste Minimisation Seed Fund**

For organisations seeking under \$2,000 to help provide innovative solutions for reducing waste through community projects.



# Mahi toi Capital arts

## Coming up at Toi Pōneke Gallery

### *Aho Hononga*

Fri 28 Jun–Fri 9 Aug



This six-week exhibition celebrates mana whenua ringatoi of Te Whanganui-a-Tara. It has been created in partnership with mana whenua of Ngāti Toa Rangatira, Te Āti Awa and Taranaki Whānui descent.

.....

### *Message to a Stranger*

Fri 16 Aug–Sun 15 Sep

*Message to a Stranger* by Daniel Worth is an ongoing body of work combining ephemeral electronic modern communication with stone cutting, which is traditional, slow, and enduring. This work playfully explores how these messages are sent, hiding them in urban and natural environments. Visitors can interact with the work, creating and displaying rubbings.



## Getting it write

Entering its sixth year, the Write Room programme at Toi Pōneke Arts Centre has been a successful gateway for budding screenwriters to develop their feature film screenplay alongside experienced industry mentors. With over 200 project submissions from Wellington writers since it launched in 2018, this residency aims to support emerging and mid-career writers who are wanting to progress their work, with a focus on reflecting stories from our city and country.

The latest Write Room resident Ella Gilbert entered the 12-week programme with the beginnings of a story and strong sense of the kind of film she wanted to create. The residency allowed her to dive deeper into her work and gave her the opportunity to do research - including a visit to the Desert Road to do extensive character exercises and story work.

Visit [toiponeke.nz](http://toiponeke.nz) | 61/69 Abel Smith Street

## City Gallery temporarily moving

City Gallery Wellington Te Whare Toi is temporarily moving to Museum of New Zealand Te Papa Tongarewa and The Dowse Art Museum from July this year. The gallery will temporarily leave its Te Ngākau Civic Square home while construction work ramps up in Te Ngākau and earthquake strengthening on the building is carried out. It will return early 2026. Find upcoming exhibitions on [citygallery.org.nz](http://citygallery.org.nz)

Find out about the Write Room residency or other residencies available at [toiponeke.nz](http://toiponeke.nz)



### Painting the stories of Berhampore

Pōneke-based artists Tracy Underwood and Ruth Robertson-Taylor are the minds behind the three new murals in Berhampore, seen on the corner of Adelaide Road and Luxford Street, the wharepaku (toilet) block, and the wall of the BP station.

Each mural uses design motifs that speak to Berhampore stories, and one of the murals included collaboration with students from Wellington East Girls' College who created 'wallpaper-like' designs, inspired by early twentieth century wallpaper designer, Betty Isaacs.

If you are interested in murals and how they happen, visit [wellington.govt.nz/mural-toolkit](https://www.wellington.govt.nz/mural-toolkit)

#### From left:

*I rock*, Photography by Daniel Worth.

A Wellington East Girls' College student painting in Berhampore.

Christian Dimick, *Sun & Partner*, 2023, Oil, acrylic, pastel, and collage on canvas. City Art Collection.

### Courtenay Place lightboxes

#### A Matariki exhibition



Until Sun 6 Oct | 77-97 Courtenay Place

The 2024 Matariki exhibition will celebrate local poi manu group Ngā Uki o te Mounga. For over 100 years Ngā Uki have maintained a presence within Pōneke and Te Whanganui-a-Tara. During this time the group has morphed while maintaining clear tribal connection to Te Āti Awa and Taranaki Whānui.

#### See Wellington's City Art Collection online

Wellington City Council started buying artworks for the City Art Collection in 1882 for display in and around its public buildings. With over 600 artworks, the collection enhances our public spaces and libraries. Now, we are pleased to launch a new online gallery where the entire collection can be seen by all. Search by artist, year, or even colour.

Visit [cityart.wcc.govt.nz](https://www.cityart.wcc.govt.nz)

# Te Koromatua me ngā Kaikaunihera

## The Mayor and Councillors

### Citywide



**Tory Whanau** Mayor

Mayor@wcc.govt.nz

**Chair**

Te Kaunihera o Pōneke | Council

Unaunahi Ngaio | Chief Executive  
Performance Review Committee

### Paekawakawa/Southern Ward



**Laurie Foon** Deputy Mayor

Laurie.Foon@wcc.govt.nz

**Deputy Chair**

Te Kaunihera o Pōneke | Council

Unaunahi Ngaio | Chief Executive  
Performance Review Committee



**Nureddin Abdurahman**

Nureddin.Abdurahman@wcc.govt.nz

**Deputy Chair**

Kōrau Mātinitini | Social, Cultural,  
and Economic Committee

### Takapū/Northern Ward



**Ben McNulty**

Ben.McNulty@wcc.govt.nz

**Deputy Chair**

Koata Hātepe | Regulatory  
Processes Committee



**Tony Randle**

Tony.Randle@wcc.govt.nz

**Deputy Chair**

Unaunahi Māhirahira  
Audit and Risk Committee



**John Apanowicz**

John.Apanowicz@wcc.govt.nz

**Deputy Chair**

Kōrau Tōtōpū | Long-term Plan,  
Finance, and Performance  
Committee

### Te Whanganui-a-Tara/ Māori Ward



**Nikau Wi Neera**

Nikau.WiNeera@wcc.govt.nz

**Chair**

Pitau Pūmanawa  
Grants Subcommittee



**Liz Kelly**

Liz.Kelly@wcc.govt.nz



**Holden Hohaia**

Holden.Hohaia@wcc.govt.nz

Not sure which ward you're in? Visit [wellington.govt.nz/wards](https://www.wellington.govt.nz/wards)



---

## Pukehinau/Lambton Ward



**Iona Pannett**

Iona.Pannett@wcc.govt.nz

**Chair**

Wellington Region Waste  
Management and Minimisation  
Plan Joint Committee



**Nicola Young**

Nicola.Young@wcc.govt.nz

**Deputy Chair**

Pitau Pūmanawa  
Grants Subcommittee



**Geordie Rogers**

Geordie.Rogers@wcc.govt.nz

---

## Motukairangi/Eastern Ward



**Sarah Free**

Sarah.Free@wcc.govt.nz

**Chair**

Koata Hātepe | Regulatory  
Processes Committee



**Tim Brown**

Tim.Brown@wcc.govt.nz

**Chair**

Kōrau Tūāpapa | Environment  
and Infrastructure Committee



**Teri O'Neill**

Teri.ONeill@wcc.govt.nz

**Chair**

Kōrau Mātinitini | Social, Cultural,  
and Economic Committee

---

## Wharangi/Onslow-Western Ward



**Diane Calvert**

Diane.Calvert@wcc.govt.nz



**Ray Chung**

Ray.Chung@wcc.govt.nz



**Rebecca Matthews**

Rebecca.Matthews@wcc.govt.nz

**Chair**

Kōrau Tōtōpū | Long-term Plan,  
Finance, and Performance Committee

**Deputy Chair**

Kōrau Tūāpapa | Environment  
and Infrastructure Committee

# Ngā hui a te Kaunihera, ngā komiti me ngā poari ā-hapori

## Council, committee and community board meetings

Council and Committee meetings are livestreamed via our YouTube page, so please tune in at [youtube.com/WgtnCC](https://www.youtube.com/WgtnCC). You are also welcome to attend any meeting listed.

Meeting dates and locations sometimes need to change, so please check final details at [wellington.govt.nz/meetings](https://www.wellington.govt.nz/meetings) or phone **04 499 4444**.

### **Monday 17 June**

7pm - Tawa Community Board  
(Tawa Community Centre)

---

### **Wednesday 19 June**

9.30am - Koata Hātepe | Regulatory  
Processes Committee

---

### **Thursday 20 June**

9.30am - Kōrau Mātinitini | Social, Cultural,  
and Economic Committee

---

### **Tuesday 25 June**

5.30pm - Accessibility Advisory Group

---

### **Wednesday 26 June**

9.30am - Kōrau Tōtōpū | Long-term Plan,  
Finance, and Performance Committee  
4pm - Youth Council  
6pm - Takatāpui and Rainbow Advisory Council

---

### **Thursday 27 June**

9.30am - Te Kaunihera o Pōneke | Council

---

### **Monday 8 July**

5pm - Environmental Reference Group

---

### **Wednesday 10 July**

6pm - Pacific Advisory Group

---

### **Wednesday 31 July**

6pm - Takatāpui and Rainbow Advisory Council

---

### **Thursday 1 August**

9.30am - Kōrau Tūāpapa | Environment  
and Infrastructure Committee  
7pm - Mākara/Ōhāriu Community Board  
(Mākara Community Hall)

### **Thursday 8 August**

9.30am - Koata Hātepe | Regulatory  
Processes Committee

---

### **Friday 9 August**

9.30am - Koata Hātepe | Regulatory  
Processes Committee

---

### **Monday 12 August**

5pm - Environmental Reference Group

---

### **Wednesday 14 August**

9.30am - Unaunahi Māhirahira | Audit  
and Risk Committee  
6pm - Pacific Advisory Group

---

### **Thursday 15 August**

9.30am - Kōrau Tōtōpū | Long-term Plan,  
Finance, and Performance Committee

---

### **Monday 19 August**

7pm - Tawa Community Board  
(Tawa Community Centre)

---

### **Tuesday 27 August**

5.30pm - Accessibility Advisory Group

---

### **Wednesday 28 August**

6pm - Takatāpui and Rainbow Advisory Council

---

### **Thursday 29 August**

9.30am - Kōrau Mātinitini | Social, Cultural,  
and Economic Committee

Unless otherwise stated, all meetings will take place at 113 The Terrace.

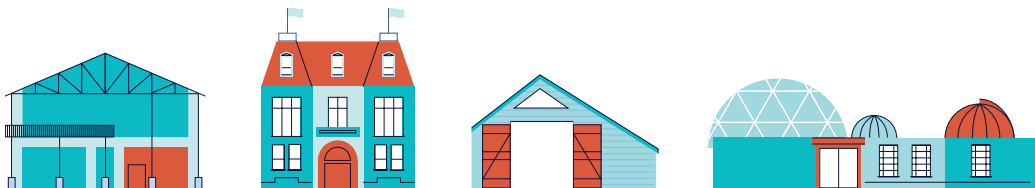
# Wheako Pōneke Experience Wellington and Win

Explore the hidden wonders of Wellington Museum, ignite creativity at Nōku te Ao Capital E, delve into the rich history of Cable Car Museum, and reach for the stars at Space Place.

## How to play

Visit each place on the map and get a special stamp for your adventure. After you collect 3 out of the 4 stamps, fill in the entry form below and give it to a staff member at your last stop to be in the draw to WIN a fun local getaway for you and your family!

**Competition** runs 16 June - 1 September 2024 | **Check venues** for opening hours  
**Learn more** at [home.experiencewellington.org.nz/competitions](http://home.experiencewellington.org.nz/competitions)



**Prize Value**  
**\$2000**

- 2 nights in a 2 bedroom suite at Boulcott Suites
- Local food and beverage vouchers
- Family activity vouchers
- Welcome pack filled with local goodies



Entry Form

NAME .....

EMAIL .....

I accept the Terms & Conditions

I would like to receive newsletters for all  
Wheako Pōneke Experience Wellington sites.

**Wheako  
Pōneke**  
Experience Wellington

PRINCIPAL FUNDER  
**Absolutely Positively  
Wellington City Council**  
Me Heke Ki Pōneke

SUPPORTED BY  
  
**BOULCOTT SUITES**  
*Your place in Wellington*

**Terms & Conditions:** One winner will be drawn Monday 2 September 2024 and contacted privately via email address provided. Prize is for 2 adults, 2 children and cannot be split. For full terms & conditions and more information visit:  
[home.experiencewellington.org.nz/competitions](http://home.experiencewellington.org.nz/competitions)



Space Place  
Admission Charges • 40 Salamanca Road, Kelburn

Cable Car Museum  
7A Upland Road, Kelburn

Wellington Museum  
3 Jervois Quay

Nōku te Ao Capital E  
Under 5s Only • 4 Queens Wharf, Te Aro

# Pōneke Stamp Collector Map

See other side for details

