



Tō Tātou Pōneke Our Wellington

Your free guide to
life in the capital

1 September –
30 November 2023

Absolutely Positively
Wellington City Council

Me Heke Ki Pōneke

Rārangi upoko Contents

3	Did you know you can... Our contact details and helpful hints	13	A zero waste future What we hope to achieve and how	26	Tō tātou hapori Our community Pōneke Promise news and community centre upgrades
5	Wā tākaro Playtime Our latest play area upgrades	15	Ō tātou wāhi Our places Connecting our city with the bike network	28	Mahi toi Capital arts New exhibitions and public art projects
6	Positively Pōneke Meet Wellington's new Central City Manager	19	Te Wā o te Kōanga Spring Festival Events and activities to celebrate the new season	31	Ngā huihuinga o te Kaunihera, ngā komiti me ngā poari ā-hapori Council, committee and community board meetings
8	Upgrades across the city Our big infrastructure projects mapped out	20	Ngā mahi whakangahau Put it on the calendar Council supported events	32	Te Koromatua me ngā Kaikaunihera The Mayor and Councillors The people who represent you in Wellington
10	Pitopito kōrero News The latest news from around our city	25	Mahi huringa āhuarangi pae matua Climate action capital Botanic Garden glasshouses better off without gas		
12	Kaupapa pūtea Funding Find out how we can help your community project				

For more information about anything in this magazine, visit wellington.govt.nz

No internet at home? You can phone our Contact Centre any time on **04 499 4444** or use a free internet computer at one of our libraries.

We're proud to use the indigenous language of Aotearoa in our publications. If you come across a word you don't know, there's an easy way to learn what it means - visit maoridictionary.co.nz

Disclaimer: We make this magazine to encourage you to get involved in local events, to demonstrate the great work happening in Wellington, and to show you some of the many reasons there are to be proud of your city. Wellington City Council has, to the best of its knowledge, sourced accurate information. We will not be held responsible for any errors, changes in pricing, or misinformation.

Production: Wellington City Council
Communications and Engagement Team

Email: ourwellington@wcc.govt.nz



This publication uses vegetable based inks and environmentally responsible paper produced from Forest Stewardship Council® (FSC®) certified, Mixed Source pulp from Responsible Sources.



Paper produced using Elemental Chlorine Free (ECF) and manufactured under the strict ISO14001 Environmental Management System.

Kia ora koutou

Ko te koanga te wā e oho ai a Te Whanganui-a-Tara mai i tana moe i te takurua, i a tātou e whai haere ana i ngā mahi o waho.

Koinei hoki te wā e whai ana tātou i ngā mahi hou e pai ana mō te tangata, te pakihī me te ao.

He nui ngā wāhi pārekareka o te tāone matua mai i Te Whare Toi, Zealandia me te Wellington Zoo ki te Cable Car, Te Papa me Jurassic World by Brickman® i Tākina, tō tātou whare hui me te pokapū whakaaturanga tino hou rawa, e haruru ana.

He maha ngā huarahi e hāereere haere ai me te pārekareka ki tō tātou tāonenui tae atu ki te haere mā te pahikara.

I tēnei putanga o Tō Tātou Pōneke ka kite koe i tētahi mahere kua whakahoutia e whakaatu ana i te whatunga pahikara onāiane me ngā mea kua whakaritea mō te anamata.

Ka kite a Te Whanganui-a-Tara i ngā takahuritanga nui rawa i ngā tau e heke nei. He mōhiohio atu anō i roto i ngā whārangi e whai ake mō te āhua o tērā.

Me te aha, me puta tātou kia pārekareka ai ki ngā rā mahana ake, mārāma ake.

Tory Whanau

Koromatua

Laurie Foon

Koromatua Tuarua

Spring is the season when Wellington wakes from its winter slumber and we look to engage in more outdoor activities.

It's also a time for us to adopt new ways of doing things that are good for people, business and the planet.

The capital is packed with attractions from the City Gallery, Zealandia and Wellington Zoo to the Cable Car, Te Papa and Jurassic World by Brickman® at Tākina, our brand new conference and exhibition centre, which is firing on all cylinders.

There's plenty of ways to get around and enjoy our city including by pedal power.

In this edition of Our Wellington you'll find an updated map showing our existing bike network as well as what's planned for the future.

Wellington will experience major transformational change over the coming years. There's also more information on what that'll look like in the pages that follow.

And let's all get out and enjoy the warmer, lighter days.

Tory Whanau

Mayor

Laurie Foon

Deputy Mayor



IMAGE Christine Webster *Therapies 4 (iv)* 2014, courtesy the artist and Trish Clark Gallery

Archive:



alter / image

**City
Gallery
Wellington**
Te Whare Toi

23 SEPTEMBER – 21 JANUARY 2024

OPEN DAILY
TUWHERA IA RĀ

Part of Experience Wellington.
Principal Funder Wellington City Council.
Strategic Partner City Gallery Wellington Foundation.

Did you know you can...



Contact us any time

Phone: 04 499 4444

Email: info@wcc.govt.nz

Stay up to date on social media

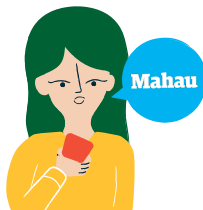
 [facebook.com/wellingtoncitycouncil](https://www.facebook.com/wellingtoncitycouncil)
 [@WgtnCC](https://twitter.com/WgtnCC)  [wgtnc](https://www.instagram.com/wgtnc)  [wgtnc](https://www.tiktok.com/@wgtnc)
 [wellingtoncitycouncil](https://www.linkedin.com/company/wellingtoncitycouncil)

Register your bike for free

You can register your bike in a secure nationwide bike database for free. 529 Garage allows other local app users to keep an eye out for missing bikes and can help the Police return bikes to their rightful owners. Visit [cyclewellington.org.nz/529_garage_bike_security](https://www.wellington.govt.nz/529_garage_bike_security)

Learn about local reo Māori dialects

Developed alongside mana whenua, the Mahau app helps beginners to learn and pronounce everyday te reo phrases and sentences, as well as Wellington destinations and place names. Use it to build your pepeha and mihi mihi! Visit [wellington.govt.nz/mahau](https://www.wellington.govt.nz/mahau)



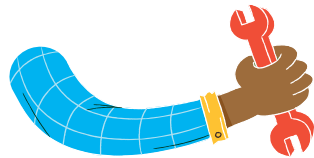
Get a free Home Energy Saver assessment

If you want practical advice on how to make simple changes to reduce energy costs and emissions, then book your free assessment now! Visit [wellington.govt.nz/home-energy-saver](https://www.wellington.govt.nz/home-energy-saver)



Reduce food waste with ShareWaste

If you're interested in composting, but unable to yourself, Sharewaste is an app that connects you with local households or organisations in your area that have compost, worm farms, or chickens that would benefit from your food scraps. Visit [sharewaste.org.nz](https://www.sharewaste.org.nz)



Tell us when something needs fixing

If you see Council property that needs fixing - such as a streetlight, leaking pipe, or public toilet - you can report it online or call us on 04 499 4444. For more information visit [wellington.govt.nz/fixit](https://www.wellington.govt.nz/fixit)

CARING FOR WILDLIFE IN YOUR BACKYARD



Beyond the safety of the fence, native wildlife face many challenges. We can all make wise choices to create a safe and rich habitat for birds and other animals in our own backyards.

ZEALANDIA™

TE MĀRA A TĀNE

Photo credit: Tom Lynch

Wā tākaro Playtime

Have fun at our new and refreshed play areas

We carry out a scheduled programme to refresh playgrounds across the city. This makes sure our facilities meet current safety standards and offer a fun play experience for our younger residents. Check out these newly refreshed play areas, which were developed with feedback from the community!

.....

Grenada Village Community Centre Neighbourhood Play Area

This site has had its popular spatial net refurbished and is ready for a new generation of tamariki to enjoy. We have also added a new play module and swings. Don't worry, the bowl spinner is still here! New safety surfacing has been added throughout the site, and the existing furniture has been refurbished.

.....

Korimako Reserve Neighbourhood Play Area

This is a brand new play area, associated with the new subdivision in this area of Churton Park. Equipment includes a tower with two slides to accommodate younger and older users, a swing set, carousel, and an area for the four-square game. There's a picnic area under a shade sail and the play area is fully fenced. The play area will be open to the public once the land has been officially vested over to the Council from the developer.

Centennial Park Miramar North Neighbourhood Play Area

There is a new sensory hut, swing set, carousel, bowl spinner, and larger play module. We have also added new safety surfacing, a rubbish bin and picnic table, amenity planting, and have fully fenced off the site.

.....

Nairnville Park Community Play Area

This play area is having a range of equipment added to support all ages of tamariki, including a bespoke-built helicopter, a flying fox, swing set, inclusive carousel, in-ground trampoline, seesaw, WeHopper spinner, junior module, and upgraded tunnel slides. New safety surfacing has been added throughout the site, along with two shade sails, a shelter covering a picnic table and refurbished furniture. The site is due to reopen to the public by spring, weather dependant.

Find out more about our playgrounds at [wellington.govt.nz/play-areas](https://www.wellington.govt.nz/play-areas)





Positively Pōneke

Supporting our central city businesses

Prak Sritharan joined the Council earlier this year as Wellington's new Central City Manager following eight years running an independent retail design store in the inner city. Part of what attracted him to the role is being able to contribute to a creative and vibrant capital, something he says has been a big part of his life, both as a business owner and resident.

Wellington is undergoing significant transformation with a programme of works that will improve public spaces, upgrade transport networks, and fix critical infrastructure for now and for future residents. With transformation comes disruption, and a key part of Prak's role is to work alongside central city businesses to help them manage through this time.

In particular, Let's Get Wellington Moving works along the Golden Mile that are due to commence will see these commercial and entertainment precincts affected by construction, so a dedicated business support service is being established to provide resources and assistance for those businesses that need it.

Alongside this Prak is excited to get started on a precinct plan for Courtenay Place. He'll be working alongside businesses to create a vision and plan to rejuvenate this area as part of the Pōneke Promise so that it is a welcoming and safe place for all. Watch this space!

Central city revitalisation begins in September

September is a huge month for Let's Get Wellington Moving (LGWM). With construction planned for the Golden Mile, we are super excited to start the city's transformation. Construction of the Aotea Quay roundabout continues, and Thorndon Quay improvements are expected to begin soon also. These projects will shape how Wellington moves people for generations to come.

The revitalisation of the Golden Mile will create a safe and beautiful heart of the city with generous spaces, attractive native trees, and mana whenua designs, while improving bus reliability and travel times across most of the bus network.

Improvements to Thorndon Quay (and later Hutt Road) will make the busiest bus route outside of the Golden



Mile more reliable, and the busiest cycle route in Wellington safer and connected to the Hutt Valley via Te Ara Tupua.

We are committed to working proactively with businesses to minimise disruption during construction while we eagerly move towards a safer, more accessible, and more welcoming city centre.

LGWM is a joint initiative between Wellington City Council, Greater Wellington Regional Council and Waka Kotahi NZ Transport Agency.

Find more about our work and how it will help Wellington thrive at [lgwm.nz](https://www.lgwm.nz)

Tool to help understand economic impacts

The Council is investing in infrastructure to create a more accessible, vibrant and sustainable city. With change can come uncertainty about what this will mean for businesses.

So that we can understand the economic impacts of our work programme, both short-term effects and the longer-term change in the mix of business and social activity, we've developed a new monitoring report, Changing Lanes.

This report looks at business performance before, during and after changes take place by measuring retail spend trends in areas of works.

The first report from June this year showed no pattern of retail activity being negatively affected by changes to street layout to date. This is good news for business and communities. We'll be producing this report every six months, the first will be available in September.

We're investing in our place to create thriving spaces and attractive streets for everyone. Follow the journey at [wcc.govt.nz/positively-poneke](https://www.wcc.govt.nz/positively-poneke)

Transforming Wellington

Wellingtonians recently told us their 10-year priorities for our city, which included fixing the pipes, roading and better public transport infrastructure (see page 10 for more). This is where we are on the job now, with more expected to be done before 2030.



1 Aotea Quay roundabout
Improved safety
and ferry access
2023-2024

2 Thorndon Quay
Priority bus and bike lanes
2023-2024

3 Thorndon bike route
Molesworth St
and Murphy St
2023-2024

**4 Hawkestone St/
Molesworth St**
Stormwater and
wastewater
2023-2024

5 Golden Mile
In stages
2023-2027



6 Te Matapihi
Central Library
Seismic strengthening
2022-2026

7 The Town Hall
Seismic strengthening
2019-2026

8 Taranaki St pump station
Wastewater system
2023-2024

9 Taranaki St rising main
Wastewater system
2023-2025

Pitopito kōrero News

What should Wellington look like in 10 years?

To kick-start our planning process for the 2024-34 Long-term Plan, we asked Wellingtonians for their 10-year priorities. 2,722 people responded to our online survey, and 350 people attended community hui.

The top 10 priorities identified were:

1. Improve resilience of pipes, roads, retaining walls and other infrastructure.
2. Better public transport infrastructure.
3. Prepare to withstand and adapt to climate change.
4. Support affordable housing.
5. Make it safer and easier to walk around the city, including for older people and disabled people.
6. Improve safety in the city at night.
7. Improve the health of our waterways.
8. Reduce our carbon emissions.
9. More support for lower-income and vulnerable residents.
10. More funding for the arts and cultural sectors.

To find out more and view the next steps, visit wcc.nz/ltp-2024-34

Te Matapihi Central Library update

The team at LT McGuinness has been busy with construction over winter and a tower crane has now been installed on site to help. Base isolators have also arrived and will be installed in December to make the structure earthquake resilient.

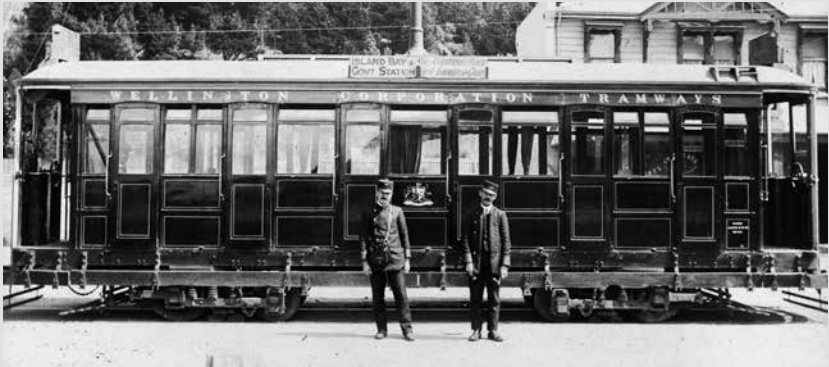
When it reopens in 2026, Te Matapihi will be an integrated central library, city archive, cafe and the front door to Council's services. Capital E will also be here continuing to spark creativity in Wellington's tamariki.

wellingtongovt.nz/te-matapihi

New bike shelters for pool-goers

Pool, beach, park and gym-goers can now lock and keep their bikes under cover near Freyberg Pool and Fitness Centre in Oriental Bay and Wellington Regional Aquatic Centre in Kilbirnie using new relocatable bike parking shelters manufactured locally by Tilley Group in Rongotai. Built for Wellington City Council, the shelters each have double-tier racks inside with parking for 24 bikes and they have been constructed in a way that means they could be shifted to another location in future, if for instance there was a more urgent need for them elsewhere or decisions were made to upgrade to a more permanent shelter.





Tramcar at Island Bay. WCC Archives, 00138-2916

A look back at historical Wellington

Wellington City Archives has recently partnered with DigitalNZ to share our collection of images from the Wellington region. Over 38,000 images dating back to the 1800s are now viewable on the DigitalNZ website along with an enormous treasure trove of content from other institutions

across Aotearoa. Check out the DigitalNZ website to see our collection of historical images and plenty more from other historical New Zealand groups. Visit digitalnz.org and search for 'Wellington City Council Archives' under the 'Partners' tab.

Moa Point Sludge Minimisation Facility

Work has started at the site of an incredibly important piece of infrastructure for Wellington, the Moa Point Sludge Minimisation Facility. Sludge, a by-product that comes from wastewater treatment, is currently piped to the Southern Landfill where it is semi-dried then mixed with household waste and disposed of in the landfill. The new facility will use thermal hydrolysis and digestion then a thermal dryer to process sludge into a safe,

non-odorous and stable product that is suitable for various re-use opportunities. It will reduce the amount of treated sludge produced by up to 80 percent, or the equivalent of 11 full Olympic-sized swimming pools, per year. It's a critical part of our goal of reducing waste to landfill and becoming a zero-carbon capital by 2050. For more information visit wellington.govt.nz/sludge

Kaupapa pūtea Funding

We have a range of funds available for community groups and projects to help make our city a better place.

Each fund has a web page, including a contact for you to talk through your ideas before applying.

Visit wellington.govt.nz/funding

Active Transport Workplace Fund

Funding is available for workplace programmes, infrastructure, and services that will encourage employees to actively commute to work. Reach out to James Smith (james.smith2@wcc.govt.nz), our Behaviour Change Specialist, for more information, to discuss ideas and alignment with fund criteria, or for support with the application process.

Arts and Culture Fund

Supports arts and cultural projects in the city that help deliver our Aho Tini outcomes: Aho Tangata (Our People), Aho Hononga (Partnership with Māori), Aho Whenua (Our Places) and Aho Mahi (Pathways). **Closes 26 October 2023.**

Climate and Sustainability Fund

Supports community groups, businesses, schools, and Māori entities to undertake climate action initiatives in Wellington. Our priorities are projects that are Māori-led and/or can demonstrate measurable emissions reductions. Reach out to Raven Maeder (raven.maeder@wcc.govt.nz), our Community and Funding Advisor - Climate Action, for more information or to explore whether this fund could be a good fit for your project. Visit our website for information about upcoming closing dates.

Living Wage for Events Fund

Helps non-Council event organisers to pay participating artists, staff members, and contractors at least the living wage (\$26 per hour as of 1 September 2023).

Closes 26 October 2023.

Social and Recreation Fund

Supports community projects and organisations that help make the city safer and more resilient and connected. **Closes 26 October 2023.**

Waste Minimisation Seed Fund

For organisations seeking between \$2,000 and \$25,000 to help provide innovative solutions for reducing waste through community projects.

Closes 26 October 2023.



A zero waste future for Wellington

Wellington has started its journey towards being a zero waste city, by signing off on a brand new, first-of-its-kind strategy that will guide us towards a zero waste future.

'He anamata para kore mō Pōneke - A zero waste future for Wellington' sets out what we hope to achieve when it comes to reducing waste, and how.

One of the strategy's key targets is to reduce the amount of waste going to landfill by 50 percent by 2030.

Another is to reduce emissions that are created by the breakdown of waste, both organic and inorganic, by at least 30 percent by 2030.

Zero Waste Strategy Manager Diljinder Uppal says we need a plan to provide direction for the Council as it tackles waste.

"We can do so much as a Council to support Wellingtonians reducing waste to landfill, by putting infrastructure and services in place to make it as easy as possible."

Diljinder says the overarching aim of the strategy is to help create a circular economy in Wellington - where the inherent value of resources is maximised for reuse and diversion.



He says it will also be important to work with local organisations already doing work on waste minimisation.

Manager Waste, Water and Resilience Chris Mathews says a huge programme of work is planned, and some already underway, to make that happen.

"This will include a review of how we collect kerbside waste, and what we collect, and the creation of community hubs where people can get things fixed or recycled instead of throwing them out. We also need to make sure we tell Wellingtonians what we're doing, and how they can get involved in creating a zero waste city.

"Getting there is everyone's responsibility, and we want all Wellingtonians to get on board by thinking about their own personal consumption and waste."

To read the strategy, and see the work we've done, visit [wellington.govt.nz/zerowaste](https://www.wellington.govt.nz/zerowaste)



MAKE A BIGGER MEMORY

BOOK AN INCREDIBLE EXPERIENCE TODAY

WELLINGTON

ZOO

For more info or to book, please visit
wellingtonzoo.com/closeencounters

CLOSE ENCOUNTERS
EXPERIENCE INCREDIBLE

Ō tātou wāhi
Our places

Connecting our city



Wellingtonians love our compact city, with vibrant inner-city life as well as sea, hills, bush and birds. To make living here even better, we want to give people more options to get around - so that all of us, even our kids, can get around in ways that are good for our health, our environment, and our economy - without our transport network grinding to a halt.

We're creating a citywide network of connected bike routes, alongside walking improvements and big public transport changes that will make this goal possible.

Our plan is bold. Transport is our city's greatest source of carbon emissions. We have to act fast to change how we get around so we can reduce our emissions and get a comprehensive network in place. To help us get there faster, we'll be making interim improvements where we can, using lower-cost materials and involving local communities.

The bike network will connect suburbs to the city centre and destinations like the hospital and waterfront, helping to get people of all ages and abilities from where they live to where they work, study, shop and spend time.

Once the network is completed, there will be...

166km

of connections for people riding bikes, scooters and skateboards



Citywide improvements for pedestrians like raised crossings and clearer footpaths

26km

of the bike network has been installed so far

155,000

of us living within a five-minute ride of the network



Higher priorities for public transport with strategic bus stop locations and bus lanes

15km

is underway over the next 10 months



Benefits



Keeps our growing population moving



Give people more transport options



Better for the planet and your wallet



Improve safety for all road users

The number of people biking in Wellington has been steadily increasing between 2000-2021

41%

growth from 2012-2021



Cordon count at peak time (Mon-Fri, 7am-9am)

✓ Completed

- ▶ Newtown to city
- ▶ Cobham Drive
- ▶ Botanic Garden ki Paekākā to city
- ▶ Hutt Road
- ▶ Oriental Bay
- ▶ Wakely Road shared path

🔄 In progress

- ▶ Evans Bay connections
- ▶ Aro Valley connections
- ▶ Ngaio connections
- ▶ Brooklyn to city
- ▶ Kilbirnie connections
- ▶ Thorndon connections
- ▶ Island Bay town centre

🕒 Planned

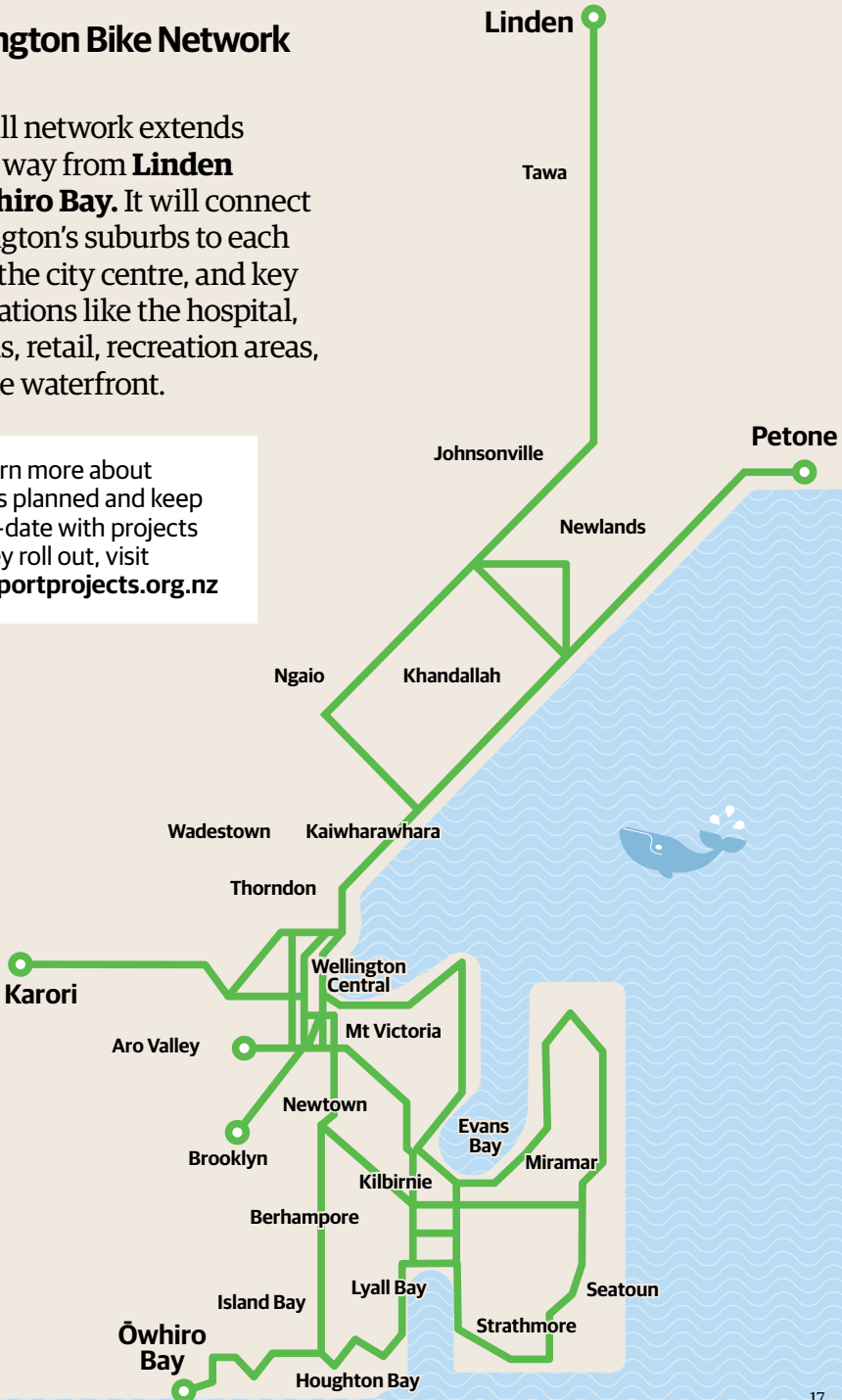
- ▶ Berhampore to Newtown
- ▶ Wadestown connections
- ▶ Karori connections
- ▶ Te Motu Kairangi connections
- ▶ Central city

and more...

Wellington Bike Network

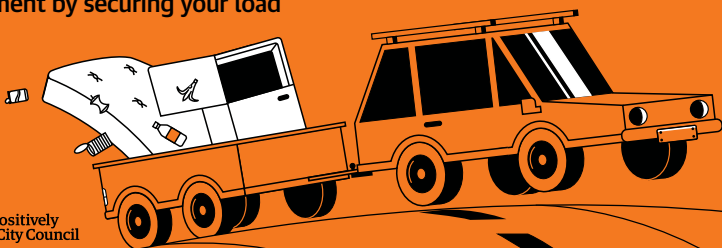
The full network extends all the way from **Linden** to **Ōwhiro Bay**. It will connect Wellington's suburbs to each other, the city centre, and key destinations like the hospital, schools, retail, recreation areas, and the waterfront.

To learn more about what's planned and keep up-to-date with projects as they roll out, visit transportprojects.org.nz



Load it right cover it tight

Road debris can be dangerous
Help protect the public and the
environment by securing your load



Absolutely Positively
Wellington City Council
Me Heke Ki Pōneke

Betty sits and waits
for the phone to ring.

She's just one of
many lonely seniors
in our city.

At Age Concern, we receive
about 2,000 support calls a
year. Loneliness is the #1
reason why people call us.

We help seniors like
Betty find social
connection.

Can we help you?
Or can you help us?
Please contact us:

04 499 6648
acwellington.org.nz



**AGE
CONCERN
WELLINGTON
REGION**
He Manaakitanga
Kaumihua Aotearoa

Te Wā o te Kōanga Spring Festival 2023 1-30 September



Join us for a series of springtime events where we enjoy a new season with friends, whānau, and visitors.

For more information, visit wellingtongardens.nz/events

Te Whare Ako o Akoranga - Rangī Tūwhera | Akoranga Learning Pavilion - Open Day

10am-2pm, Sat 2 Sep
Botanic Garden ki Paekākā | Free

Drop into the Akoranga Learning Pavilion to see honeybees close-up in our Apiscope (viewing hive), meet beekeepers, taste honey, and more.



Kaiwhakaata Āmiomio Roaming Performers

10am-2pm, Sat 9 Sep
Ōtari-Wilton's Bush & Botanic Garden ki Paekākā | Free

Keep an eye out for pop-up performers around Ōtari-Wilton's Bush and Botanic Garden ki Paekākā.

The Art of Ikebana Exhibition

9am-4pm, Sat 9 & Sun 10 Sep
Botanic Garden ki Paekākā | Free

Discover the art of Japanese flower arranging with an exhibition of spring arrangements by Ikebana Wellington.

Rā Tūwhera ki Ōtari | Ōtari Open Day

10am-2pm, Sat 16 Sep
Ōtari-Wilton's Bush | Free

Discover and celebrate New Zealand's only native botanic garden at Ōtari Open Day. Get to know our unique collections of native plants, learn more about what goes on behind the scenes of our nursery and get a peek into the Lions Ōtari Conservation Laboratory. There will be guided tours and informational talks in addition to hands-on activities.

Tulip Sunday

10am-2pm, Sun 25 Sep
Botanic Garden
ki Paekākā | Free

Join the Wellington Dutch Club and Netherlands Embassy to welcome in spring through a day of culture, food and fun.

Bring the whole whānau and enjoy a day out with Dutch food among the tulips in the Display Garden.



Ngā mahi whakangahau

Put it on the calendar

Check out some of the exciting events the Council is supporting over the spring months. For more info, visit wellington.govt.nz/events

The Barbie Collector: Toy Theatre

Sat 2 Sep | Wellington Museum

Light, camera, action! Tamariki tour The Barbie Collector exhibition then learn how to produce a short film featuring their own dolls. Suitable for ages 9-12. Tickets \$60. wellingtonmuseum.nz

The Barbie Collector

On now until 10 Sep
Wellington Museum

Step into the dreamy world of Mattel at the temporary exhibition featuring close to 500 Barbies and Kens of New Zealand's biggest Barbie collectors. wellingtonmuseum.nz



Make sure to check online

For all events, please go online and check the event website or social media page for up-to-date event, venue and entry information.

Wellington Museum

Low Sensory Hour

4pm-5pm, first Thu of every month
Wellington Museum

Featuring low light and sound throughout the museum. wellingtonmuseum.nz

Classical on Cuba:

Delightfully Offbeat

Sat 2-Sun 3 Sep | Various locations

Discover classical music in contemporary Cuba Street culture. Pair your experience of fine music with some of the coolest bars and eateries in Pōneke. classicaloncuba.co.nz

Garden Walks

3, 8, 10, 17, 25 & 27 Sep

Botanic Garden ki Paekākā | Free

Embrace the beauty of spring in our garden. Explore blooming bulbs, sculptures, trees, and the secret life of bees. Join us for enchanting walks filled with delightful discoveries. Check dates and times at wellingtongardens.nz

Sci-Fi Sundays: Cult Classics

6pm, Sun 3, 10 & 17 Sep | Space Place

Be immersed in the iconic worlds of Dune, Blade Runner and 2001: A Space Odyssey with Space Place's full-dome planetarium. Tickets include popcorn. spaceplace.nz

TAHI - NZ Festival of Solo Performance

Wed 6-Sat 16 Sep | Various venues

TAHI supports the showcasing of Aotearoa's most innovative solo performance. tahifestivalnz.com

ONO

Thu 7-Sat 16 Sep | Circa Theatre

A collection of six new monologues by Māori and Pasifika writers. tahifestivalnz.com/ono

Te Wiki o te Reo Māori Māori Language Week

Mon 11-Sun 17 Sep

Celebrate Aotearoa New Zealand's indigenous language. Te Wā Tuku Reo Māori/Māori Language Moment will take place at 12noon, Thu 14 Sep, to acknowledge the time and date Te Petihana Reo Māori was submitted to Parliament in 1972. Kōrero (speak), waiata (sing), pānuī (read) - whatever you do, do it in te reo Māori. reomaori.co.nz and wellington.govt.nz/maorilanguageweek

Suitcase Show - Development Showing

Wed 13-Sat 16 Sep | BATS Theatre

A traveller unpacks a stack of suitcases - from within them whole worlds will emerge. tahifestivalnz.com/suitcase-show

Te Hui Ahurei Reo Māori o Te Whanganui-a-Tara

Mon 11-Sun 17 Sep

The Māori Language Festival of Wellington - Te Hui Ahurei Reo Māori o Te Whanganui-a-Tara, is returning this Hepetema/September, to celebrate and showcase te reo Māori through the arts. tereofest.nz

Scots College Wearable Design Showcase

Thu 21 Sep-Wed 11 Oct | Treehouse Botanic Garden ki Paekākā | Free

Scots College students exhibit their wearable design concepts and garments, exploring natural dying and sustainable textile practices. wellingtongardens.nz



2022 Te Hui Ahurei Reo Māori, Te Pikikōtuku.
Photo by Renati Photography.

Scarcity & Abundance

On now until Sun 3 Sep
Thistle Hall, Cuba Street

Group exhibition partnering with Kaibosh Food Rescue and The Free Store.

kaibosh.org.nz/thistle-hall-2023

.....

Tuatara Open Late

5pm-10pm, Thu 7 Sep, 5 Oct, 2 Nov
City Gallery Wellington

Every first Thursday of the month, enjoy our current exhibitions afterhours while exploring our ever-changing programme of late-night events. Tickets \$10.

citygallery.org.nz

World of WearableArt

Wed 20 Sep-Sun 8 Oct | TSB Arena

Enter a portal to another planet with the 2023 World of WearableArt (WOW) Show: BEYOND. For its 33rd iteration, WOW will take place across a three-week season, bringing the TSB Arena stage to life with incredible works of wearable art. worldofwearableart.com



Beneath, Agnes Olah, University of Wales Trinity Saint David, United Kingdom

Masons Screen

On now until Mon 25 Sep
Masons Lane steps

Bledisloe Bebo (2020), by Bronwyn Holloway-Smith, brings the Bledisloe House (Auckland) rooftop mural, an abstract mosaic frieze (Guy Ngan), to ground level in this video.

wellington.govt.nz/masons

.....

Te Wiki Kaumātua/Seniors' Week

Sun 1-8 Oct | Various venues

A series of community events and activities for our older people.

wellington.govt.nz/seniors-week

.....

2023 Korea Week

Fri 6-Sun 8 Oct | Embassy Theatre

A variety of cultural events, including K-Pop performances, K-Movies, K-Food, and more. linktr.ee/koreanembassy

.....

Kaibosh Food Rescue turns 15!

Sat 14 Oct | Kaibosh, 11 Hopper Street

Since 2008, Kaibosh has distributed over 10 million meals to the community, stopping tonnes of food being needlessly wasted. Join Kaibosh for a party and to celebrate World Food Day. kaibosh.org.nz

.....

NZIA City Talks

6pm-8pm, Mon 18 Sep, 16 Oct, 20 Nov
City Gallery Wellington | Free

Lectures exploring the space and places Kiwis live, work, and play. Initiated by the New Zealand Institute of Architects Wellington Branch. citygallery.org.nz

Jurassic World by Brickman®

On now until Mon 16 Oct | Tākina

Get ready for an adventure like no other as Ryan (Brickman) McNaught re-imagines Jurassic World in NZ's largest-ever LEGO® brick exhibition. wellingtonnz.com/takina

.....

Wellington Children's Art Exhibition

Fri 22 Sep–Sun 8 Oct | Wellington Museum

Celebrate our city's youngest artists at the seventh Children's Art Exhibition developed by Capital E and the Wellington Sakai Association. wellingtonmuseum.nz

.....

Astronomy on Tap

8pm–10pm, Tue 26 Sep & 31 Oct | Space Place

Sit back and relax in our digital full-dome planetarium as we explore the night sky. spaceplace.nz

.....

Ōtari Raranga Weavers

Ōtari-Wilton's Bush

Learn about traditional Māori weaving and healing practices using native plants. otariraranga.wordpress.com

.....

Family Day

11am–4pm, Sun 1 Oct

City Gallery Wellington

Enjoy fun, free, family-friendly activities at City Gallery Wellington's Family Day. Donation appreciated. citygallery.org.nz

.....

Ceramicus exhibition

9am–4pm, Wed 4–Sun 15 Oct

Begonia House, Botanic Garden
ki Paekākā | Free

Visit the Wellington Potters' Association's annual Ceramicus exhibition in the Begonia House Foyer. wellingtongardens.nz

.....

Sugar Rose Workshop

Thu 5 & Fri 6 Oct

Botanic Garden ki Paekākā

Learn how to make a sugar rose stem out of gum paste during this two-day rose workshop at the Discovery Pavilion. wellingtongardens.nz

.....

Pop-up Pottery Market

Sat 7 & Sun 8 Oct

Botanic Garden ki Paekākā | Free

Visit the Wellington Potters' Association's pop-up pottery market in the Dell, with 20 stallholders. Weather dependant. wellingtongardens.nz

.....

WXV 1 Tournament

Fri 20 & Sat 21 Oct | Sky Stadium

The world's top six international women's rugby teams will play in Wellington in an inaugural international women's rugby tournament this Labour weekend. wellingtonnz.com

.....

Wellington Heritage Week

Mon 23 Oct–Sun 5 Nov | Various venues

Experience Wellington's people, places and stories. wellingtonheritageweek.co.nz

Heritage Week with Wellington Gardens

Mon 23 Oct-Sun 5 Nov | Various venues

Guided tours, behind-the-scenes looks, and captivating stories await. Explore, discover, and immerse yourself in the history of our spaces.

wellingtongardens.nz

Shadow Windows Art Walk

6pm-7pm, Wed 1 Nov

Glover Park on Garrett St | Free

Join artist Andrew Beck for a walk and talk through his artwork 'Shadow Windows' exploring the social heritage landscape of Te Aro's historic Swan Lane and Garrett Street. wellingtonheritageweek.co.nz

Wellington Jazz Festival

Wed 25-Sun 29 Oct | Various locations

Te Whanganui-a-Tara will be abuzz again this October, as the city's beloved Jazz Festival returns with a line-up of exciting international names in jazz and celebrated homegrown musicians. jazzfestival.nz

Diwali Festival of Lights & Fireworks

2pm-8.30pm, Sun 29 Oct

TSB Arena and Shed 6

Sample the colours, tastes, and sounds of India and South-East Asia, with non-stop cultural entertainment, food, and Indian cultural activities. The evening ends with a fireworks display. wellington.govt.nz/diwali

Semi Permanent

Wed 8-Fri 10 Nov | St James Theatre

Semi Permanent is back, connecting world-class talent and global brands with Aotearoa's creative audiences.

semipermanent.com

Verb Readers & Writers Festival

Thu 9-Sun 12 Nov | Various venues

Join one of Aotearoa's best readers and writers festivals with conversations and performances with writers from all over the country. verbwellington.nz



Verb Readers & Writers Festival

Christmas Celebrations

Each Sat (Sun rain day) from 25 Nov-16 Dec
Various locations

Visit the Council website in October to find out where Christmas celebrations and activities will be popping up around the CBD - including arts and crafts, live performances, and kids' activities! wellington.govt.nz/events

Mahi huringa āhuarangi pae matua

Climate action capital

Botanic Garden glasshouses better off without gas

Wellington's Botanic Garden ki Paekākā is the first plant nursery in Aotearoa to ditch gas heaters and use heated pipes to keep their glasshouses warm.

Previously, the gas heaters in the glasshouses used to blow hot air around at floor level and were often temperamental and unreliable.

They used up to 33,000 kWh of gas per month in the winter - that's the same amount as 30 average Kiwi homes use in a year, in just one month! As well as being costly, the unpredictable temperatures caused health issues in the plants.

When it came time to repair the heaters, the gardens team began consulting with different organisations about how they could be more energy efficient and climate-positive. A solution soon came forward to use CO2 heat pumps.

As this type of system was a first to be used for a plant nursery, the team received funding by Energy Efficiency & Conservation Authority (EECA) to install a hot water heat pump, which uses two units to pump water heated to 90 degrees through pipes running underneath work benches and evenly distributing heat.



A year on from the installation, the results show how beneficial this work has been, says Wellington Gardens Manager David Sole.

“It’s amazing to see that we’ve halved our glasshouse operating costs and had a 64 percent reduction in energy use and a 100 percent reduction in gas consumption.

“We are also seeing an improvement in our plants, with our staff noticing that the leaves aren’t drying out as much now with consistent temperatures.”

Wellington City Council Climate Action Strategy Lead Mike Sammons says this project shows innovation in the move to being net-zero by 2050, as part of Te Atakura - First to Zero, our climate action plan.

“This project shows how we are moving in the right direction, especially when we have low carbon energy solutions at a place that is loved by Wellingtonians for its beautiful plants, trees and flowers.”

Tō tātou hāpori

Our community



The
Pōneke
Promise

Courtenay Place spruced up with community effort

The heart of our entertainment district got some TLC during the Courtenay Place clean up in June. With a concentrated effort, Wellington City Council, DCM, Wellington City Mission, Police, Metlink, local business and volunteers came together for a morning to make a visible improvement in the short term - scrubbing, sweeping, water blasting and picking up over 90kg of rubbish.

Murals have been installed on two empty shop fronts in Courtenay Place, including Reading Cinemas. The Reading Mural was created in collaboration with Everyone™, Baked Design and Wellington City Council.

The patterns flowing through the mural reflect mana whenua connections to the whenua (land), awa (water tributaries) and the moana (sea) in this area.

Art and clean streets are important parts of the Pōneke Promise as it helps create an environment that feels safe, vibrant and cared for, improving people's perception of safety.

Find out more about the Pōneke Promise at wellington.govt.nz/ponekepromise

Sign up to Pōneke Promise news at wellington.govt.nz/enewsletters

Te Tai Ohinga - Central City Youth Hub

Keep your eyes peeled for the launch of Te Tai Ohinga, a brand-new space for rangatahi, set to open very soon. The hub is one of the key outcomes of our community-driven safety initiative, the Pōneke Promise, and will be located on Willis Street next to Saint Peter's Church.

The name Te Tai Ohinga was gifted by Kura Moeahu, Chairman Te Rūnanganui o Te Āti Awa.

“Te Tai refers to the tides of the sea, and Ohinga is a word referencing the opportunity for youth in Pōneke to make a resurgence now there is a safe space coming for them to hang out,” says Kura.

Te Tai Ohinga will be run by local youth development organisation, The Y. ycentral.nz/wgtncityyouthhub



Community centre upgrades

Wellington has three fresh community centres. Newtown Cultural and Community Centre, Te Tuhunga Rau/Strathmore Park Community Centre, and Aro Valley Community Centre have all just received beautiful upgrades to better serve their local communities.

Whether you're looking for new friends, new hobbies, or new ways to make a difference, there's something for everyone at your

local community centre, with a variety of programmes to suit different interests, ages, and abilities.

Check out your closest community centre and what programmes and services they offer.

wellington.govt.nz/community-centres

Start your garden with Seeds to Feeds

Seeds to Feeds kicks off its spring/summer programme in September with events all around our beautiful city. Seed and seedling swaps will be popping up in local libraries, community gardens, community

centres and other interesting spots. These events are a great way to start your summer garden, learn more about growing kai, and connect with your neighbours. seedstofeeds.nz/events

Mahi toi Capital arts

Coming up at Toi Pōneke Gallery

Matt Tini, Maija Stephens, Renati Waaka, Elena Rei: He Rito

Sat 2–Fri 29 Sep

He Rito follows the hands of four rangatahi Māori artists who reconnect to and work with harakeke. As their practice enters into te whare pora, they enhance their connection to place, te taiao, and their ancestry - promoting this journey through community-based wānanga. Photography, sound, and textile design.

Yon Yi Sohn, Moonhee Han, Eun Jung Jang: Listening to Lines

Sat 7 Oct–Fri 3 Nov

Exhibition, talks, workshops

Three Wellington-based artists collaborate in this exhibition of drawing, painting, embroidery, and installation of 'lines' - the basic element of visual storytelling - which materialise the cultural hybridity of their Korean heritage and adapted lives in New Zealand.

Elisabeth Vullings

Gehaakte Gordijntjes - Crocheted Curtains

Sat 11 Nov–Fri 8 Dec

This exhibition examines how the 21 houses Elisabeth grew up in shaped her understanding of 'home' and her identity as a Dutch New Zealander. Architectural constructs based on fragments of memory, experience, and migration transform the gallery into an abstract house, inviting contemplation.

Coming up at City Gallery Wellington

Ayesha Green: Folk Nationalism

On now until Sun 15 Oct

A significant body of paintings, drawing, and sculptures by acclaimed artist, Ayesha Green (Ngāti Kahungunu, Kāi Tahu).

Folk Nationalism encapsulates Green's career-long interrogation of culturally loaded images from Aotearoa history.

Nova Paul: Ngā Pūrākau Nō Ngā Rākau

On now until Sun 8 Oct

A new film installation by artist Nova Paul (Ngāpuhi). Paul's films consider the poetics and politics of place to create an image of tino rangatiratanga - Māori sovereignty.

George Watson: Beauty Incarnate

On now until Sun 15 Oct

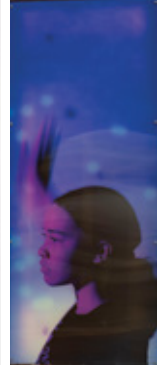
An installation of sound, text, and sculpture by George Watson (Ngāti Porou, Moriori, Ngāti Mutunga), encompassing his recurring interest in modernist Pākehā author Katherine Mansfield.

Archive: alter / image

Sat 23 Sep–Sun 21 Jan 2024

Thirty years after City Gallery opened in the former Wellington Public Library Building, this exhibition brings together paintings, photography, and film work, displaying them alongside archival documentation and ephemera.

Visit toiponeke.nz | 61/69 Abel Smith Street



From left:

Ayesha Green, *The Harvest 2020*, acrylic on canvas. Courtesy of the artist and MTG Hawke's Bay Tai Ahuriri.
 Elisabeth Vullings, *Gehaakte Gordijntjes - Crocheted Curtains*.
 Courtenay Place Light Boxes, *Kura Huna*.

Ngahuia Harrison: Coastal Cannibals

Sat 23 Sep - Sun 21 Jan 2024

In *Coastal Cannibals*, Ngahuia Harrison (Ngātiwai, Ngāti Pukenga, Ngāti Kahu Torongare) uses photography and film-making to explore the impact of colonisation and government legislation on the land, water and people of Whangārei Te Rerenga Parāoa - The Whangārei Harbour.

Eerie Pageantry

Sat 28 Oct - Sun 18 Feb 2024

Eerie Pageantry calls forth the folk-horror infused art of New Zealand modernist artist Don Driver and contemporary Australian artist Julia Robinson - a cornucopia of folk horror and art through made and modified materials, textures, colours, tools, bodies, and nightmares.

Light Boxes

**Courtenay Place Light Boxes
Kura Huna**

On now until Mon 9 Oct
 77-97 Courtenay Place

Kura Huna is a Matariki light box exhibition by the taura of Te Kura Kaupapa Māori o Ngā Mokopuna, mentored by Te Whanganui-a-Tara based artists Shannon Te Ao (Ngāti Tūwharetoa, Ngāti Wairangi, Pāpaka-a-Māui) and Hendrix Hennessy-Ropiha (Ngāti Kahungunu, Ngāti Raukawa).

Cobblestone Light Boxes

Te Whānau Mārama | Family of Light

On now until Oct | 139 Vivian Street

This exhibition created by Victoria University Faculty of Architecture & Design Innovation's Dr Leon Gurevitch features astrophotography from iconic landmarks in Te-Whanganui-a-Tara and Te Waipounamu.

Visit citygallery.org.nz | Te Ngākau Civic Square

Consent is

when it goes both ways.

when you can change your mind.

when you *want* to say yes.

when you feel safe to say no.

when there are no doubts in your mind.

when *everyone* knows what is happening.

when *everyone* is having a good time.

#MoreThanAYes

VUW/SA

*THURS
DAYS
INTELLECT
VUW



TE TIRA AHU PAU
100% MĀORI OWNED BUSINESS

The
Pōneke
Promise

Ngā huihuinga o te Kaunihera, ngā komiti me ngā poari ā-hapori Council, committee and community board meetings

Council and Committee meetings are livestreamed via our YouTube page, so please tune in at [youtube.com/WgtnCC](https://www.youtube.com/WgtnCC). You are also welcome to attend any meeting listed.

Meeting dates and locations sometimes need to change, so please check final details at [wellington.govt.nz/meetings](https://www.wellington.govt.nz/meetings) or phone **04 499 4444**.

Wed 6 Sep

9.30am - Kōrau Tōtōpū | Long-term Plan, Finance, and Performance Committee
1.30pm - Koata Hātepe Regulatory Processes Committee
4pm - Youth Council

Thu 7 Sep

9.30am - Te Kaunihera o Pōneke | Council

Mon 11 Sep

5pm - Environmental Reference Group

Wed 13 Sep

6pm - Pacific Advisory Group

Thu 14 Sep

9.30am - Kōrau Tūāpapa Environment and Infrastructure Committee
7pm - Mākara/Ōhāriu Community Board

Mon 18 Sep

9.30am - Wellington Region Waste Management and Minimisation Plan Joint Committee
7pm - Tawa Community Board

Wed 20 Sep

4pm - Youth Council
6pm - Takatāpui and Rainbow Advisory Council

Tue 26 Sep

5.30pm - Accessibility Advisory Group

Thu 28 Sep

9.30am - Kōrau Tōtōpū | Long-term Plan, Finance, and Performance Committee

Wed 4 Oct

9.30am - Grants Subcommittee
4pm - Youth Council

Thu 5 Oct

9.30am - Koata Hātepe Regulatory Processes Committee

Mon 9 Oct

5pm - Environmental Reference Group

Wed 11 Oct

9.30am - Unaunahi Māhirahira | Audit and Risk Committee
6pm - Pacific Advisory Group

Thu 12 Oct

9.30am - Kōrau Mātinitini | Social, Cultural, and Economic Committee

Mon 16 Oct

7pm - Tawa Community Board

Wed 18 Oct

9.30am - Koata Hātepe Regulatory Processes Committee
4pm - Youth Council
6pm - Takatāpui and Rainbow Advisory Council

Wed 25 Oct

9.30am - Te Kaunihera o Pōneke | Council

Thu 26 Oct

7pm - Mākara/Ōhāriu Community Board

Tue 31 Oct

5.30pm - Accessibility Advisory Group

Thu 2 Nov

9.30am - Kōrau Tūāpapa Environment and Infrastructure Committee

Wed 8 Nov

6pm - Pacific Advisory Group

Thu 9 Nov

9.30am - Kōrau Tōtōpū | Long-term Plan, Finance, and Performance Committee

Mon 13 Nov

5pm - Environmental Reference Group

Wed 15 Nov

4pm - Youth Council
6pm - Takatāpui and Rainbow Advisory Council

Thu 16 Nov

9.30am - Koata Hātepe Regulatory Processes Committee

Mon 20 Nov

7pm - Tawa Community Board

Thu 23 Nov

9.30am - Kōrau Mātinitini | Social, Cultural, and Economic Committee

Tue 28 Nov

5.30pm - Accessibility Advisory Group

Wed 29 Nov

9.30am - Audit and Risk Committee
4pm - Youth Council

Thu 30 Nov

9.30am - Kōrau Tūāpapa Environment and Infrastructure Committee

All meetings take place at Council headquarters, 113 The Terrace, or in the suburbs for Community Board meetings.

Te Koromatua me ngā Kaikaunihera

The Mayor and Councillors

Citywide



Tory Whanau Mayor

Mayor@wcc.govt.nz

Chair

Te Kaunihera o Pōneke | Council
Unaunahi Ngaio | Chief Executive
Performance Review Committee

Paekawakawa/Southern Ward



Laurie Foon Deputy Mayor

Laurie.Foon@wcc.govt.nz

Deputy Chair

Te Kaunihera o Pōneke | Council
Unaunahi Ngaio | Chief Executive
Performance Review Committee



Nureddin Abdurahman

Nureddin.Abdurahman@wcc.govt.nz

Deputy Chair

Kōrau Mātinitini | Social, Cultural,
and Economic Committee

Takapū/Northern Ward



Ben McNulty

Ben.McNulty@wcc.govt.nz

Deputy Chair

Koata Hātepe | Regulatory
Processes Committee



Tony Randle

Tony.Randle@wcc.govt.nz

Deputy Chair

Unaunahi Māhirahira
Audit and Risk Committee



John Apanowicz

John.Apanowicz@wcc.govt.nz

Deputy Chair

Kōrau Tōtōpū | Long-term Plan,
Finance, and Performance
Committee

Te Whanganui-a-Tara/ Māori Ward



Nikau Wi Neera

Nikau.WiNeera@wcc.govt.nz

Deputy Chair

Pitau Pūmanawa
Grants Subcommittee



Liz Kelly

liz.kelly@wcc.govt.nz



Holden Hohaia

holden.hohaia@wcc.govt.nz

Pukehinau/Lambton Ward



Iona Pannett

Iona.Pannett@wcc.govt.nz

Chair

Wellington Region Waste Management and Minimisation Plan Joint Committee



Nicola Young

Nicola.Young@wcc.govt.nz

Chair

Pitau Pūmanawa Grants Subcommittee



Tamatha Paul

Tamatha.Paul@wcc.govt.nz

Chair

Kōrau Tūāpapa | Environment and Infrastructure Committee

Wharangi/Onslow-Western Ward



Diane Calvert

Diane.Calvert@wcc.govt.nz



Ray Chung

Ray.Chung@wcc.govt.nz



Rebecca Matthews

Rebecca.Matthews@wcc.govt.nz

Chair

Kōrau Tōtōpū | Long-term Plan, Finance, and Performance Committee

Motukairangi/Eastern Ward



Sarah Free

Sarah.Free@wcc.govt.nz

Chair

Koata Hātepe | Regulatory Processes Committee



Tim Brown

Tim.Brown@wcc.govt.nz

Deputy Chair

Kōrau Tūāpapa | Environment and Infrastructure Committee



Teri O'Neill

Teri.ONeill@wcc.govt.nz

Chair

Kōrau Mātinitini | Social, Cultural, and Economic Committee

Not sure which ward you're in? Visit [wellington.govt.nz/wards](https://www.wellington.govt.nz/wards)



Ngā Kapa Haka o Te Matatini

16 Hepetema/September Michael Fowler Centre



**TE HUI AHUREI
REO MĀORI**
O Te Whanganui-a-Tara

The Māori Language Festival of Wellington

BOOK NOW
tereofest.nz

Enjoy more art experiences that celebrate te reo Māori by visiting the website for the full programme of events between 11-17 September.

PRESENTED BY



TE RŪNANGANUI O TE ĀTI AWA



TARANAKI WHĀNUI
KAITIAKI TAKE KŌWHIRI



TE PŪNANGA O
TOA RANGĀTIRA

Absolutely Positively
Wellington City Council
Me Heke Ki Pōneke

SUPPORTED BY



TE MATATINI
Kapa Haka Aotearoa