



CSD Plan - SO 464822

Survey Number SO 464822
Surveyor Reference 28161 WCC
Surveyor Karl Anthony Wilton
Survey Firm Cuttriss Consultants Ltd (Lower Hutt)
Surveyor Declaration I Karl Anthony Wilton, being a licensed cadastral surveyor, certify that:
(a) this dataset provided by me and its related survey are accurate, correct and in accordance with the Cadastral Survey Act 2002 and the Rules for Cadastral Survey 2010, and
(b) the survey was undertaken by me or under my personal direction.
Declared on 11 Jul 2013 09:33 AM

Survey Details

Dataset Description	Sections 1-4	Type	Survey
Purpose	Legalisation	Survey Class	Class A
Status	Approved as to Survey		
Land District	Wellington		
Coordinate System	Wellington 2000		

Survey Dates

Surveyed Date	16/05/2013	Certified Date	11/07/2013
Submitted Date	11/07/2013 09:33:38	Survey Approval Date	11/07/2013
Deposit Date			

Referenced Surveys

Survey Number	Land District	Bearing Correction
DP 10265	Wellington	-0°01'00"
DP 23293	Wellington	-0°01'00"
DP 86898	Wellington	-0°01'00"
DP 367005	Wellington	-0°01'00"
DP 392736	Wellington	-0°01'00"

Territorial Authorities

Wellington City

Comprised In

CT WN551/275

Created Parcels

Parcels	Parcel Intent	Area	CT Reference
Section 1 Survey Office Plan 464822	Legalisation	0.0068 Ha	
Section 2 Survey Office Plan 464822	Legalisation	0.0079 Ha	
Section 3 Survey Office Plan 464822	Legalisation	0.0020 Ha	



CSD Plan - SO 464822

Created Parcels

Parcels	Parcel Intent	Area	CT Reference
Section 4 Survey Office Plan 464822	Fee Simple Title Road Road	0.0905 Ha	
Total Area		<hr/> 0.1072 Ha	



Mark and Vector

Survey Number SO 464822
Coordinate System Wellington 2000

From	To	Code	Bearing	Adpt Surv	Distance	Adpt Surv
LP V DP 86898	LP VI DP 86898	ob0	16°37'00"	M	75.81	M
LP VI DP 86898	LP III DP 367005	ob8	200°52'30"	A DP 367005	47.40	A DP 367005
LP III DP 367005	SPS I DP 367005	ob9	189°34'30"	M	14.35	M
SPS I DP 367005	LP V DP 86898	ob10	189°34'30"	M	14.41	M
LP V DP 86898	IS I SO 464822	ob1	154°12'45"	M	48.50	M
IS I SO 464822	LP X DP 392736	ob34	265°29'45"	M	101.63	M
LP X DP 392736	IS II DP 86898	ob12	89°57'30"	A DP 392736	95.48	A DP 392736
IS II DP 86898	LP V DP 86898	ob11	343°31'00"	A DP 392736	53.79	A DP 392736
IS I SO 464822	SPS I DP 367005	ob35	342°05'40"	M	60.82	M
LP X DP 392736	SP 2 SO 464822	ob13	99°14'00"	M	25.05	M
SP 2 SO 464822	IS I SO 464822	ob41	81°05'30"	M	77.52	M
LP X DP 392736	LP V DP 392736	ob14	181°45'30"	M	82.25	M
LP V DP 392736	IT IV DP 392736	ob16	70°01'10"	A DP 392736	69.84	A DP 392736
IT IV DP 392736	LP IX DP 392736	ob17	84°32'30"	A DP 392736	53.63	A DP 392736
LP IX DP 392736	IS II DP 86898	ob18	338°29'40"	A DP 392736	57.31	A DP 392736
SP 2 SO 464822	IT XI DP 10265	ob42	293°20'30"	M	47.25	M
IT XI DP 10265	IT I DP 23293	ob39	156°19'00"	A DP 23293	26.01	A DP 23293
IT I DP 23293	PEG (1) DP 10265	ob40	357°54'00"	A DP 23293	15.25	A DP 23293
PEG (1) DP 10265	DISK 2A SO 464822	ob21	86°53'00"	A DP 10265	61.70	A DP 10265
DISK 2A SO 464822	PEG (2) DP 10265	ob24	65°51'00"	A DP 10265	14.01	A DP 10265
PEG (2) DP 10265	UNMK 1 SO 464822	ob23	101°11'10"	A DP 10265	15.90	C
UNMK 1 SO 464822	PEG (3) DP 10265	ob45	101°11'10"	A DP 10265	4.45	C
PEG (3) DP 10265	PEG (4) DP 10265	ob22	19°34'00"	A DP 10265	3.79	A DP 10265
PEG (4) DP 10265	UNMK 2 SO 464822	ob20	319°24'10"	A DP 10265	5.51	C
UNMK 2 SO 464822	PEG (5) DP 10265	ob47	319°24'10"	A DP 10265	20.54	C
PEG (5) DP 10265	PEG DP 86898	ob19	74°27'45"	A DP 10265	22.20	A DP 10265
PEG DP 86898	LP V DP 86898	ob44	315°01'00"	A DP 86898	15.72	A DP 86898
DISK 2A SO 464822	PEG (6) DP 10265	ob25	356°52'50"	A DP 10265	43.66	A DP 10265
PEG (6) DP 10265	PEG (7) DP 10265	ob27	99°31'20"	A DP 10265	22.23	A DP 10265
PEG (7) DP 10265	PEG (5) DP 10265	ob28	189°31'20"	A DP 10265	14.99	A DP 10265
DISK 2A SO 464822	PEG 1B SO 464822	ob26	86°53'00"	C	27.20	C
PEG 1B SO 464822	UNMK 1 SO 464822	ob29	46°18'00"	C	1.69	C
UNMK 1 SO 464822	PEG 1A SO 464822	ob46	46°18'00"	C	2.62	C
PEG 1A SO 464822	UNMK 2 SO 464822	ob30	1°48'00"	C	5.08	C
UNMK 2 SO 464822	DISK VC SO 464822	ob48	1°48'00"	C	0.71	C
DISK VC SO 464822	DISK VB SO 464822	ob31	329°09'00"	C	14.98	C
DISK VB SO 464822	DISK VA SO 464822	ob32	340°01'00"	C	7.45	C
DISK VA SO 464822	PEG (7) DP 10265	ob33	356°02'00"	C	9.83	C

Mark and Vector

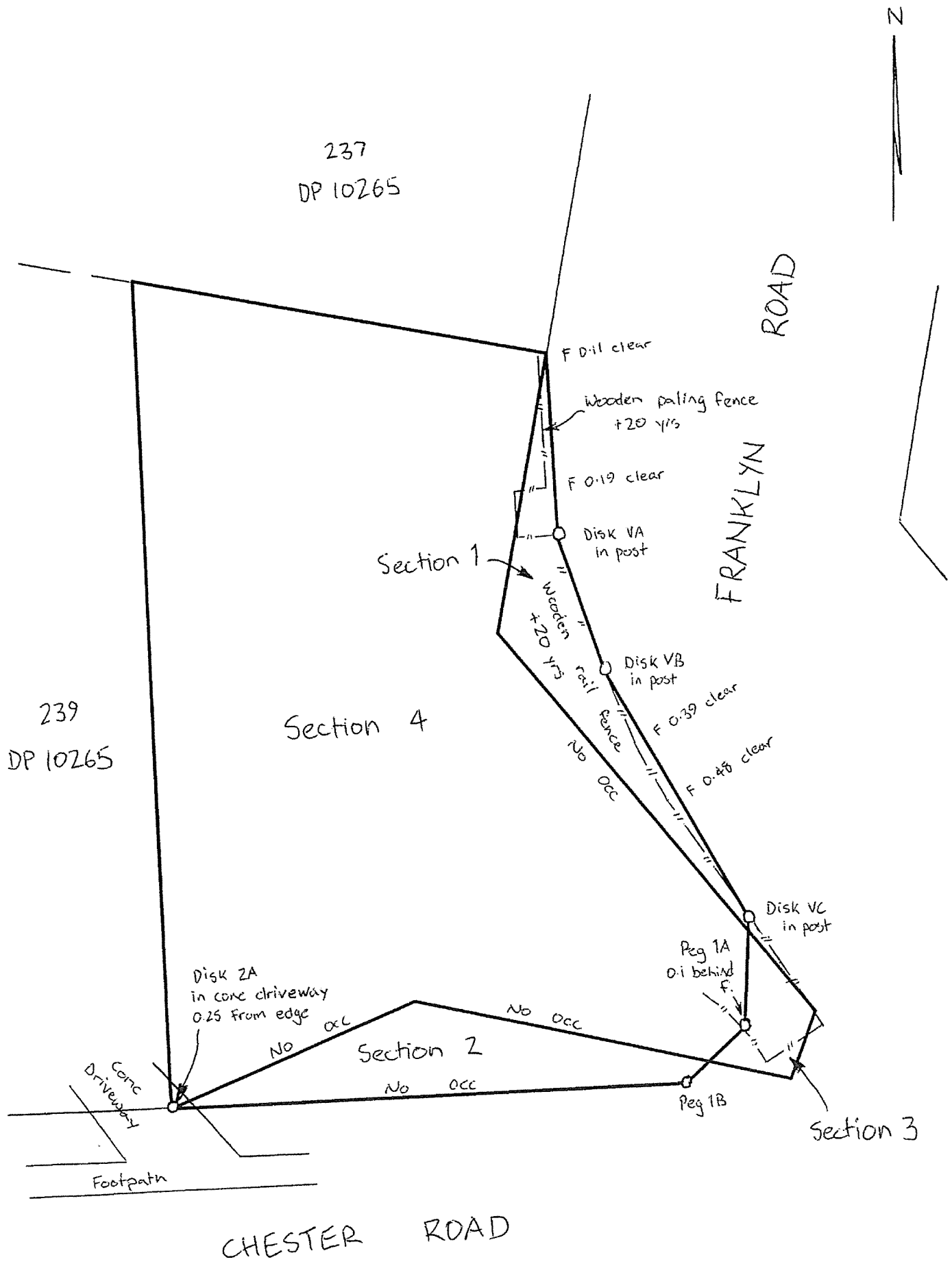
Survey Number SO 464822
 Coordinate System Wellington 2000

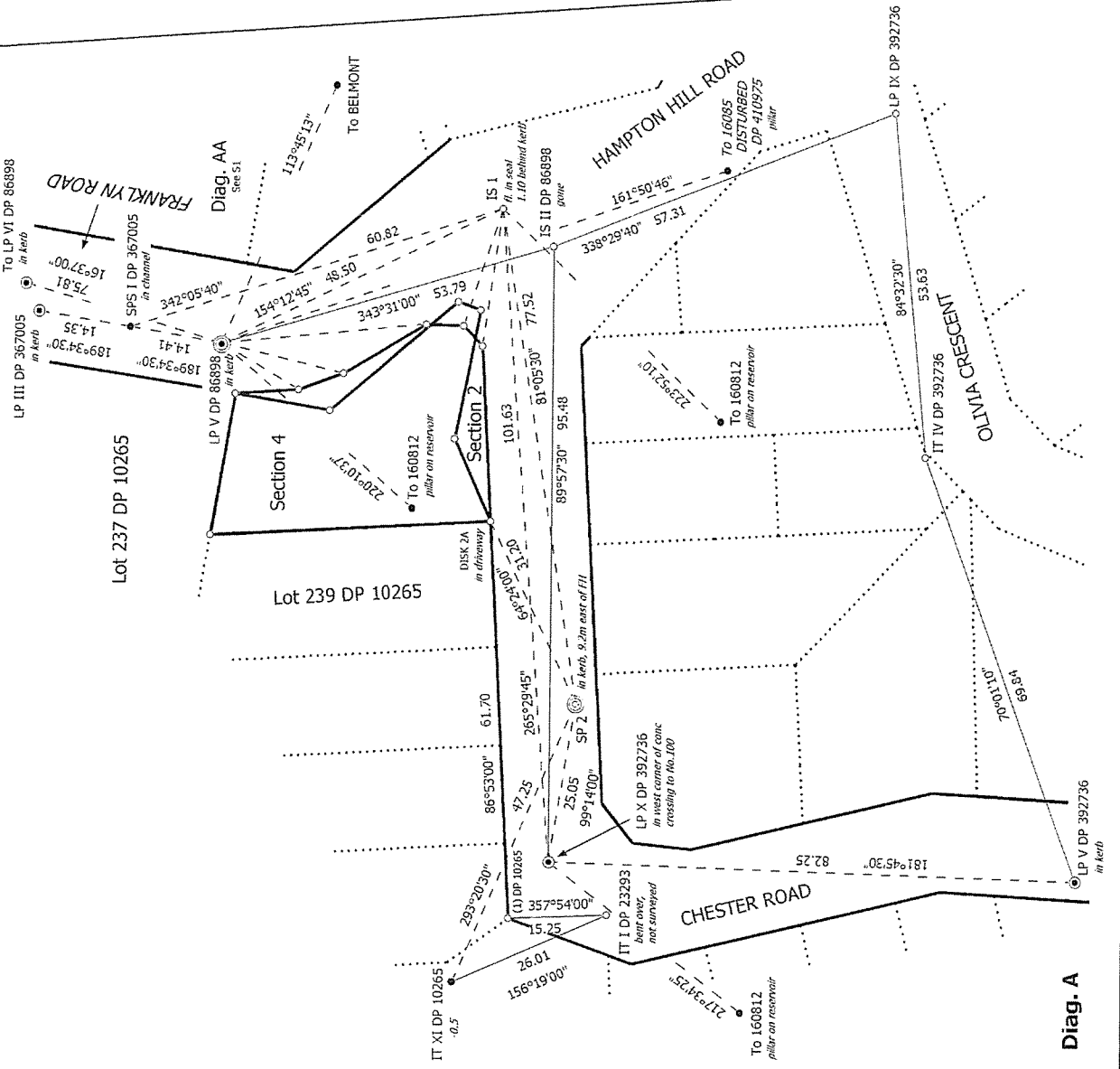
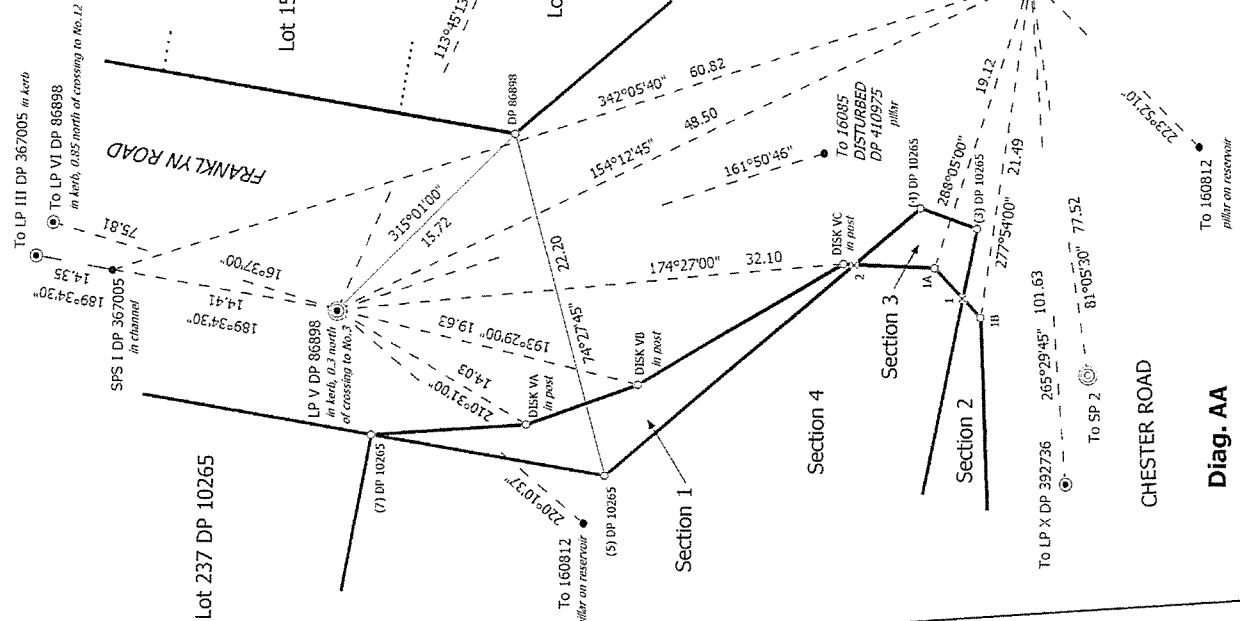
From	To	Code	Bearing	Adpt Surv	Distance	Adpt Surv
LP V DP 86898	160812	ob2	220°10'37"	M		
LP V DP 86898	16085 DISTURBED DP 410975	ob3	161°50'46"	M		
LP V DP 86898	BELMONT	ob4	113°45'13"	M		
LP X DP 392736	160812	ob15	217°34'25"	M		
IS 1 SO 464822	160812	ob36	223°52'10"	M		
IS 1 SO 464822	PEG 1A SO 464822	ob37	288°05'00"	M	19.12	M
IS 1 SO 464822	PEG 1B SO 464822	ob38	277°54'00"	M	21.49	M
SP 2 SO 464822	DISK 2A SO 464822	ob43	64°24'00"	M	31.20	M
LP V DP 86898	DISK VA SO 464822	ob5	210°31'00"	M	14.03	M
LP V DP 86898	DISK VB SO 464822	ob6	193°29'00"	M	19.63	M
LP V DP 86898	DISK VC SO 464822	ob7	174°27'00"	M	32.10	M

Mark Name	Description
IS 1 SO 464822	fl in seal, 1.10 behind kerb, 3m south of vehicle crossing to No.2
IT XI DP 10265	-0.5
LP III DP 367005	in kerb
LP V DP 392736	in kerb
LP V DP 86898	in kerb, 0.3m north of driveway to No.3
LP VI DP 86898	in kerb, 0.85m north of crossing to No.12
LP X DP 392736	Lead Plug at west corner conc vehicle crossing No.100
SP 2 SO 464822	in kerb, 9.2m east of fire hydrant
SPS I DP 367005	in channel

*** End of Report ***

Occupation Diagram





S 1/1

Diag. AA

Diag. A

CSD Plan
SO 464822
Approved on: 11/07/2013

Surveyor: Karl Anthony Wilton
Firm: Cultriss Consultants Ltd (Lower Hutt)
Survey Date: 16/05/2013

Sections 1-4

Land District: Wellington

Digitally Generated Plan
Generated on: 11/07/2013 1:57pm Page 6 of 7



T 1/1

CSD Plan
SO 464822
Approved on: 11/07/2013

Surveyor: Karl Anthony Wilton
Firm: Cuttriss Consultants Ltd (Lower Hutt)
Survey Date: 16/05/2013

Sections 1-4

Land District: Wellington

Digitally Generated Plan
Generated on: 11/07/2013 1:57pm Page 7 of 7

